

SMMSe/SHRMe VRF Rooftop Unit 40QQ-036ABA6-0A0

TOSHIBA
Carrier

Submittal Data

Job Name _____ Location _____

Tag _____



STANDARD FEATURES

- Vane Axial Fan (VAF) Technology
- Three Fan Speeds - High, Medium and Low
- Electronically Commutated Fan Motor (ECM)
- Built In Pulse Modulating Valve For Installation Ease
- Built-In Mounting Bracket for FS Box Installation (for Heat Recovery)
- Horizontal and Vertical Economizer Option
- 14" or 24" Roof Curb Option
- Electric Heat Option

| INDOOR UNIT MODEL | 40QQ-036ABA6-0A0 | |
|------------------------|------------------|----------|
| PERFORMANCE | | |
| Cooling Rated Capacity | Btu/h | 36,000 |
| Heating Rated Capacity | Btu/h | 38,000 |
| Rated Airflow Cooling | CFM | 1050 |
| Rated Airflow Heating | CFM | 1050 |
| Sound Data (H, M, L) | dBA | 76/73/66 |
| ESP (Factory Default) | wg | 0.15 |
| ESP (Max) | wg | 1.20 |
| ELECTRICAL | | |
| Power Supply | V/Ph/Hz | 460/3/60 |
| MCA | A | 2.0 |
| MOCP | A | 15.0 |
| Full Load Amps (FLA) | A | 1.5 |

| PHYSICAL DATA | | |
|--------------------------------|--------|--------|
| Pipe Connection Size - Liquid | inches | 3/8 |
| Pipe Connection Size - Suction | inches | 5/8 |
| Pipe Connection Size - Drain | inches | 3/4 |
| Refrigerant | R410A | |
| DIMENSIONS (inches) | H (in) | 33-3/8 |
| | W (in) | 74-3/8 |
| | D (in) | 46-5/8 |
| NET WEIGHT | lbs | 346 |
| SHIPPING WEIGHT | lbs | 399 |

ACCESSORIES (Optional and Field Installed)

Economizer

- ☐ Vertical (CRECOMZR076A00)
- ☐ Horizontal (CRECOMZR077A00)

Roof Curb

- ☐ 14" (CRRFCURB001A01)
- ☐ 24" (CRRFCURB002A01)

Controls

- ☐ Wired Remote Controller
(7-Day Programmable) - RBC-AMS54E-UL

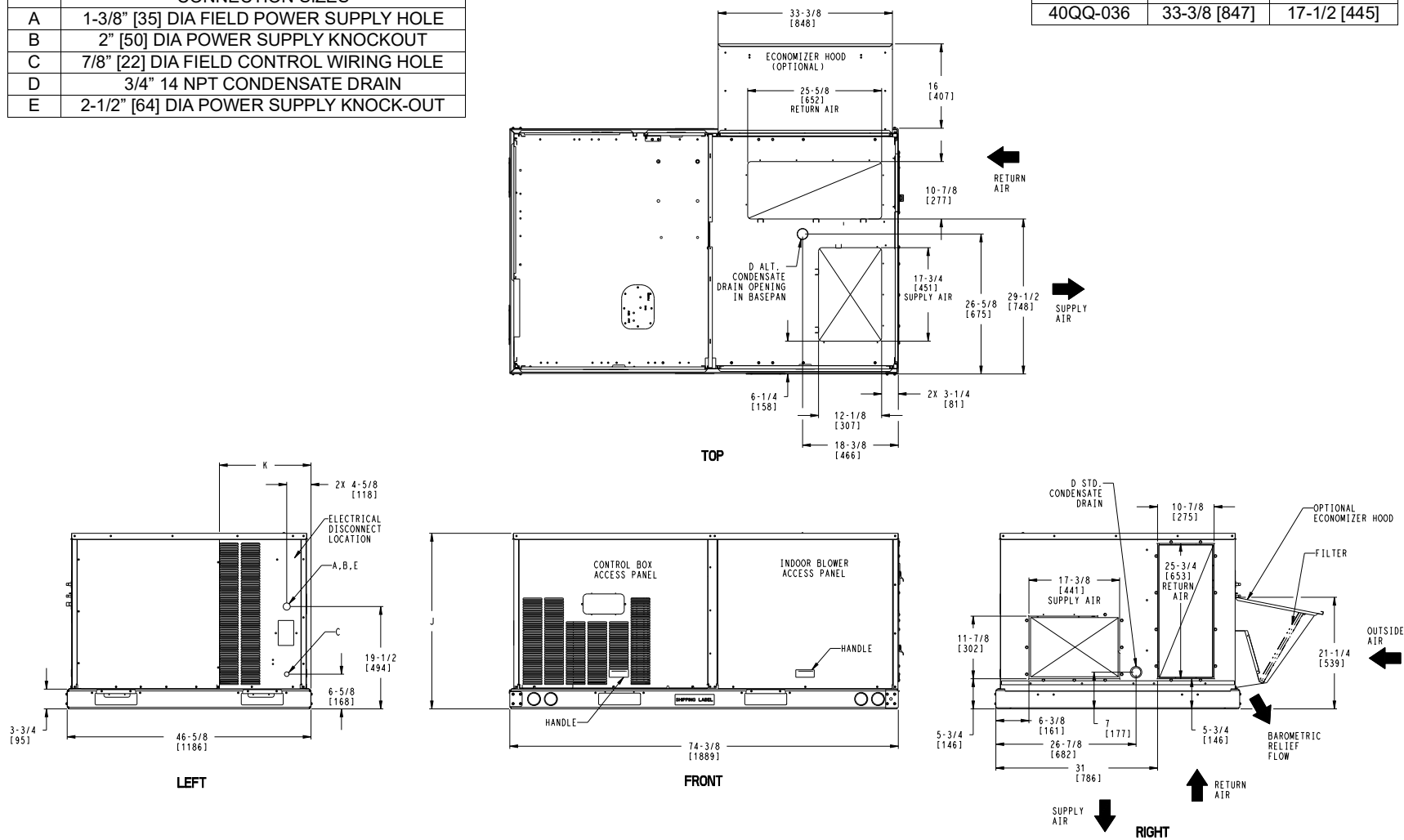
Electric Heater

- ☐ 6 kW + Single Point Power Kit
(CRHEATER333A00 + CRSINGLE037A00)
- ☐ 8.8 kW + Single Point Power Kit
(CRHEATER334A00 + CRSINGLE037A00)
- ☐ 11.5 kW + Single Point Power Kit
(CRHEATER335A00 + CRSINGLE037A00)



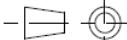
Dimensional Drawing Rooftop 40QQ-036ABA6-0A0

| CONNECTION SIZES | |
|------------------|-----------------------------------------|
| A | 1-3/8" [35] DIA FIELD POWER SUPPLY HOLE |
| B | 2" [50] DIA POWER SUPPLY KNOCKOUT |
| C | 7/8" [22] DIA FIELD CONTROL WIRING HOLE |
| D | 3/4" 14 NPT CONDENSATE DRAIN |
| E | 2-1/2" [64] DIA POWER SUPPLY KNOCK-OUT |

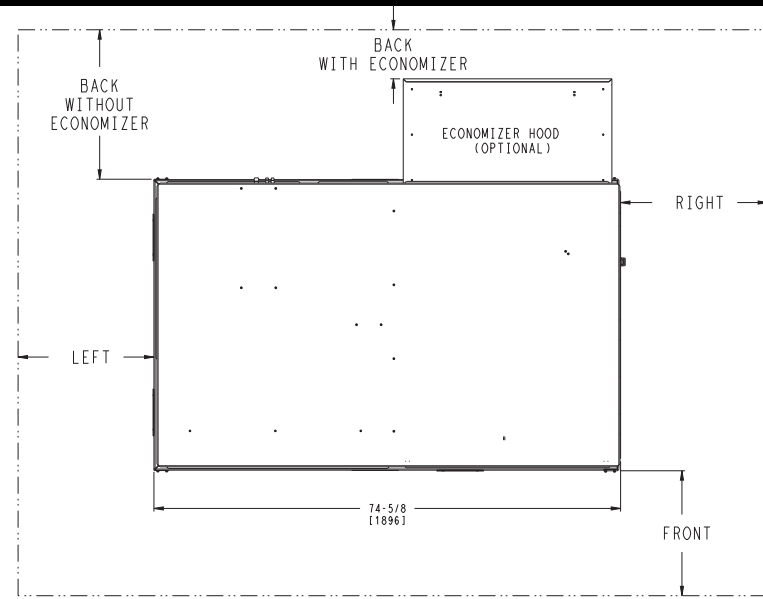
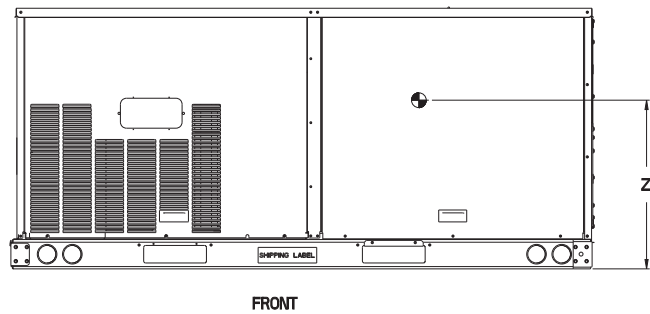
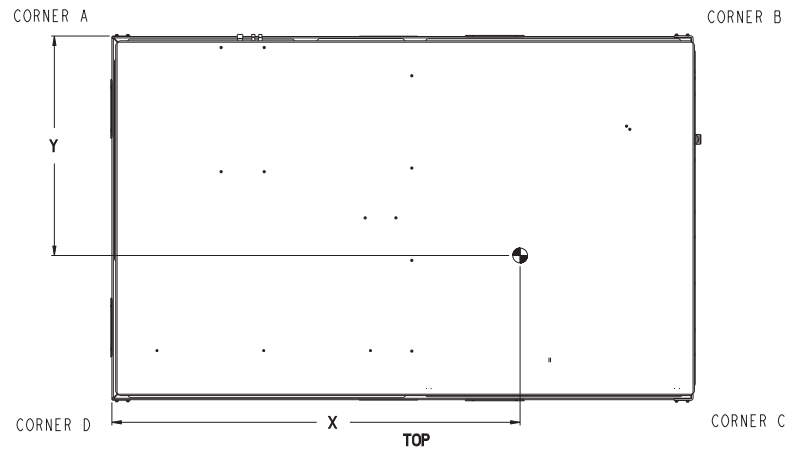
| Unit | J | K |
|----------|--------------|--------------|
| 40QQ-036 | 33-3/8 [847] | 17-1/2 [445] |



Notes

1. Dimensions are in inches. Dimensions in [] are in millimeters
2.  Center of gravity
3.  Direction of air flow
4.  All view drawn using 3rd angle



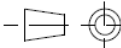
Dimensional Drawing Rooftop 40QQ-036ABA6-0A0



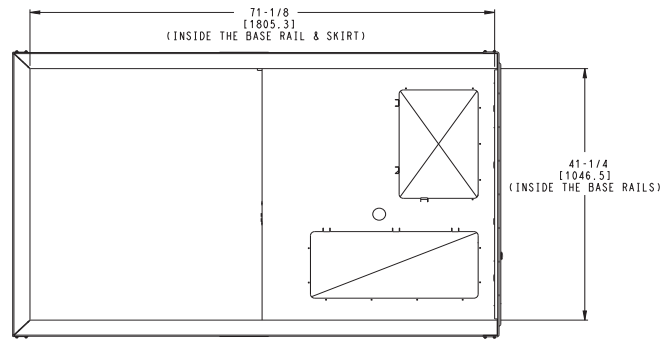
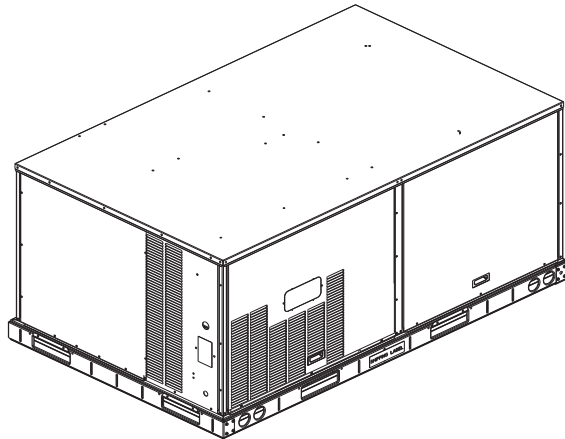
| CLEARANCE | | | |
|-------------|-------------------------------------|----------------------------------------|------------------------|
| SURFACE | SERVICE WITH: CONDUCTIVE BARRIER | SERVICE WITH: NONCONDUCTIVE BARRIER | OPERATING CLEARANCE |
| FRONT | 48 [1219mm] | 36 [914mm] | 18 [457mm] |
| LEFT | 48 [1219mm] | 42 [1067mm] | 18 [457mm] |
| BACK | 48 [1219mm] | 42 [1067mm] | 18 [457mm] |
| BACK W/HOOD | 36 [914mm] | 36 [914mm] | 18 [457mm] |
| RIGHT | 36 [914mm] | 36 [914mm] | 18 [457mm] |
| TOP | 72 [1829mm] | 72 [1829mm] | 72 [1829mm] |

| Unit | STD. UNIT WEIGHT (A) | | CORNER WEIGHT (A) | | CORNER WEIGHT (B) | | CORNER WEIGHT (C) | | CORNER WEIGHT (D) | | C.G. | | HEIGHT |
|----------|----------------------|-----|-------------------|------|-------------------|------|-------------------|------|-------------------|------|--------------|--------------|----------|
| | LBS. | KG. | LBS. | KG. | LBS. | KG. | LBS. | KG. | LBS. | KG. | X | Y | Z |
| 40QQ-036 | 346 | 157 | 125 | 56.6 | 100 | 45.4 | 54 | 24.5 | 67 | 30.4 | 39-1/8 [994] | 20-3/4 [527] | 19 [438] |

Notes

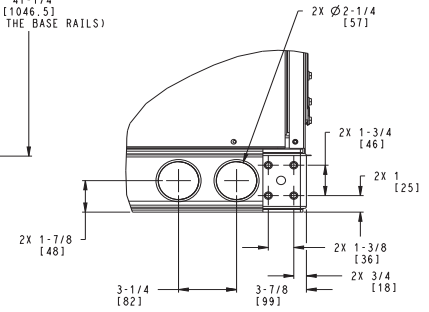
1. Dimensions are in inches. Dimensions in [] are in millimeters
2.  Center of gravity
3.  Direction of air flow
4.  All view drawn using 3rd angle

Dimensional Drawing Rooftop 40QQ-036ABA6-0A0

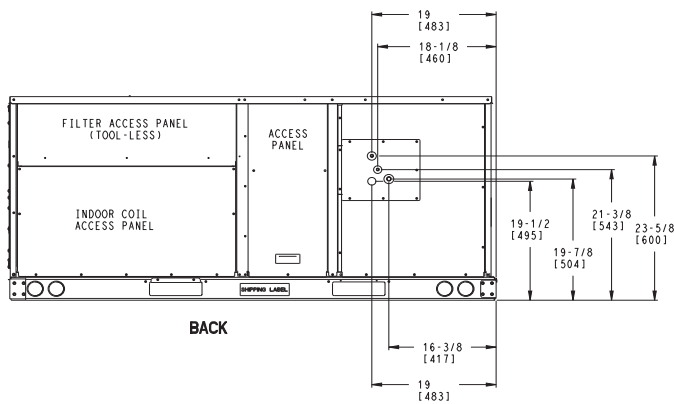


INSIDE BASERAIL DIMENSIONS

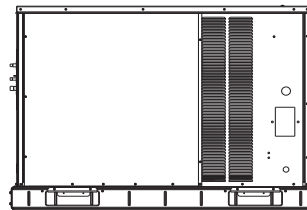
BOTTOM



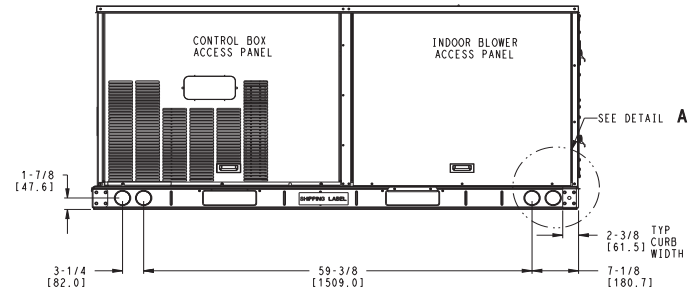
DETAIL A
TYP 4 PLCS



BACK



LEFT



FRONT

Note: Dimensions are in inches. Dimensions in [] are in millimeters.

