

SMMSu VRF u-Series Outdoor Unit MMY-UP3601HT9P-UL—Heat Pump



Submittal Data

Job Name _____ Location _____

Tag _____



A230331

SMMSu VRF Heat Pump Features

- Energy-efficient priority design
- Super-efficient heat exchanger
- Refrigerant cooling inverter system
- Intelligent VRF control
- Less refrigerant
- Space efficient design
- Configuration flexibility
- Wider Operating temperature range
- Comprehensive System construction solution
- Comprehensive Service solution

Header Unit Model		MMY-UP3601HT9P-UL
Outdoor Unit Model Name		MUP1681HT9P-UL + MUP0961HT9P-UL + MUP0961HT9P-UL
PERFORMANCE		
Nominal Cooling Capacity†	Btu/h	360,000
Nominal Heating Capacity†	Btu/h	405,000
Maximum number of indoor units		64
Total Connected Indoor Unit Capacity		540
COOLING EFFICIENCY†		
EER (Non-Ducted)	Btu/Wh	9.63
Power Consumption (Non-Ducted)	kW	34.70
EER (Ducted)	Btu/Wh	11.20
Power Consumption (Ducted)	kW	27.52
HEATING EFFICIENCY†		
COP (Non-Ducted)	Btu/Wh	3.44
Power Consumption (Non-Ducted)	kW	32.08
COP (Ducted)	Btu/Wh	3.50
Power Consumption (Ducted)	kW	29.30
FAN		
Fan Type		Propeller
Airflow	CFM	8670 + 6180 + 6180
Motor Output	kW	0.73 x 2 + 0.59 x 1 + 0.59 x 1
ELECTRICAL		
Power Supply	V/Ph/Hz	208-230/3/60
MCA	A	57.4 + 36.6 + 36.6
MOCP	A	80.0 + 45.0 + 45.0

COMPRESSORS				
Type (Number)		Hermetic Twin Rotary (2) + Hermetic Triple Rotary (1)		
Motor Output	kW	12.10 + 6.24 + 6.24		
PHYSICAL DATA				
Pipe Connection Size - Liquid (High Pressure)	in.	5/8 (Brazeing)	1/2 (Brazeing)	1/2 (Brazeing)
Pipe Connection Size - Gas (Low Pressure)	in.	1-1/8 (Brazeing)	7/8 (Brazeing)	7/8 (Brazeing)
Refrigerant		R-410A		
Factory Charge††	lb	19.8 + 13.2 + 13.2		
External Finish		Munsell 1Y8.5/0.5		
Unit Width	in.	51.4 + 39.6 + 39.6		
Unit Height	in.	66.5 + 66.5 + 66.5		
Unit Depth	in.	31.1 + 31.1 + 31.1		
Unit Net Weight	lb	778 + 521 + 521		

LEGEND

- EER** — Energy Efficiency Ratio
- COP** — Coefficient of Performance
- MCA** — Minimum Circuit Amps
- MOCP** — Maximum Overcurrent Protection

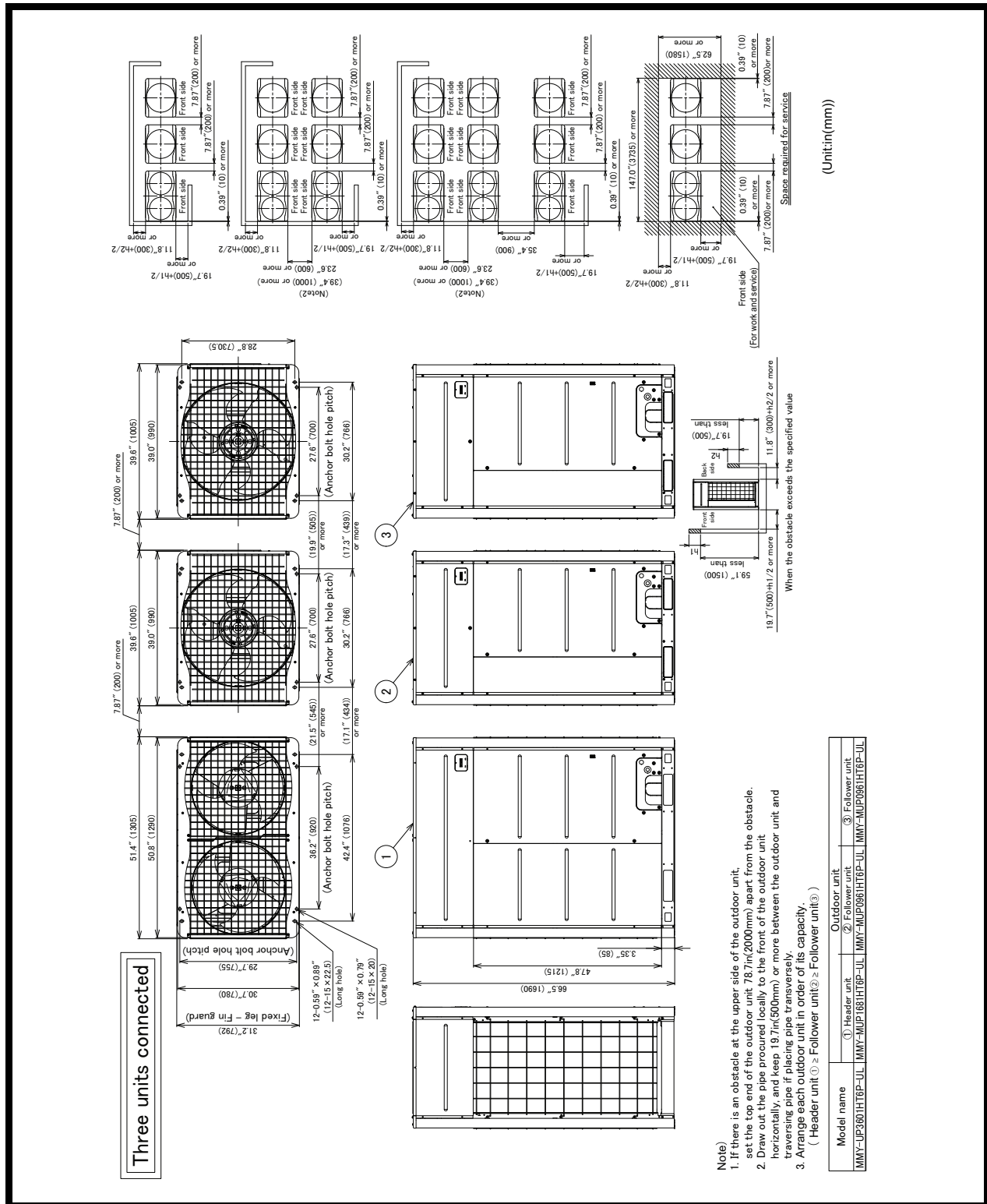
†Rated per AHRI (Air-Conditioning, Heating and Refrigeration Institute) 1230 Standard.

Cooling: Indoor 80°F (27°C) db/67°F (20°C) wb; Outdoor 95°F (35°C) db

Heating: Indoor 70°F (21°C) db; Outdoor 47°F (8°C) db/43°F (6°C) wb

††Additional charge required.

OUTDOOR UNIT HEAT PUMP MMY-UP3601HT9P-UL DIMENSIONAL DRAWING



Note

- If there is an obstacle at the upper side of the outdoor unit, set the top end of the outdoor unit 76.7in(2000mm) apart from the obstacle.
- Draw out the pipe procured locally to the front of the outdoor unit horizontally, and keep 19.7in(500mm) or more between the outdoor unit and traversing pipe if placing pipe transversely.
- Arrange each outdoor unit in order of its capacity.
(Header unit ①, Follower unit ②, Follower unit ③)

Model name	Header unit	Outdoor unit
MMY-UP3601HT9P-UL	① Header unit MMY-MUP1881HT9P-UL	② Follower unit MMY-MUP0961HT9P-UL
		③ Follower unit MMY-MUP0961HT9P-UL

