

Accessory Head Pressure Control Damper For Use with Horizontal Indoor Single-Package Cooling Units Sizes 024 to 060

Cancels: New

IHK 502A-24-1
2/15/01

Installation Instructions

Part No. LD28ZZ029

PACKAGE CONTENTS

ITEM	QUANTITY
Damper	1
10-ft length 1/4-in. copper tubing with flare nuts	1
Schrader valve	1
1 1/2-in. snap bushing	1

INSTALLATION

Horizontal Indoor Single-Package Cooling Units are shipped from the factory fully assembled. Units, however, may be split in the field if necessary. See unit installation instructions for details.

IMPORTANT: Refrigerant system contains high-pressure refrigerant. Wear safety glasses and gloves when attaching copper tubing to Schrader valve on liquid line.

- Before installing unit, drill 1 1/2-in. diameter hole in top cover of evaporator to allow routing of 1/4-in. copper tubing, taking care not to drill into any other part of unit. See Fig. 1.
- Install 1/4-in. copper tube with flare nuts. Be sure to connect copper tube to damper side first. See Fig. 2.
- Connect copper tubing to Schrader valve on refrigerant liquid line.
- Paint edge of drilled hole to protect against corrosion.
- Insert 1 1/2-in. snap bushing through drilled hole.
- Install unit following special unit installation instructions packaged with unit. Be certain to follow all cautions and procedures.

- To install damper to condenser supply airside of unit, connect field-supplied flexible duct between damper and duct system.
- Attach damper support to control damper. See Fig. 2 and 3.

NOTE: A field-supplied step-up transition piece is required in ductwork when this damper is used on size 048 and 060 units. No ductwork transition is required for size 024 and 036 units. See Fig. 4 for control damper dimensions.

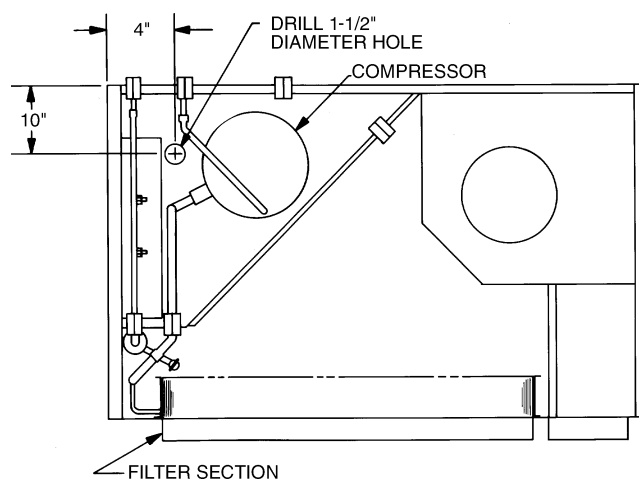


Fig. 1 — Location of Drilled Hole (Top View)

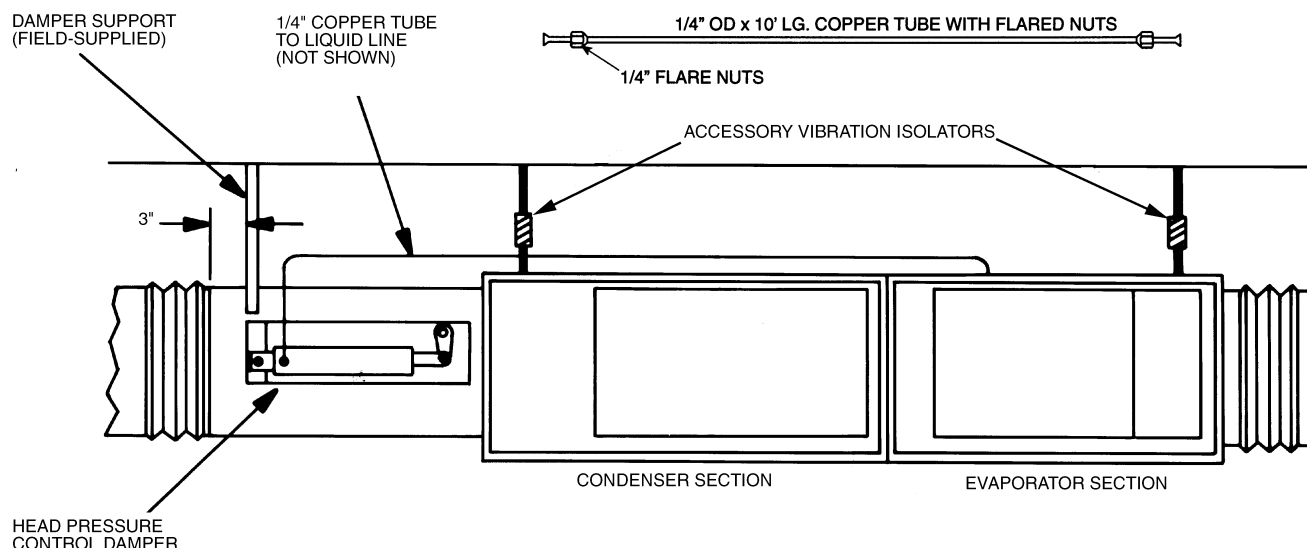


Fig. 2 — Head Pressure Control Damper Installation — Factory Configuration

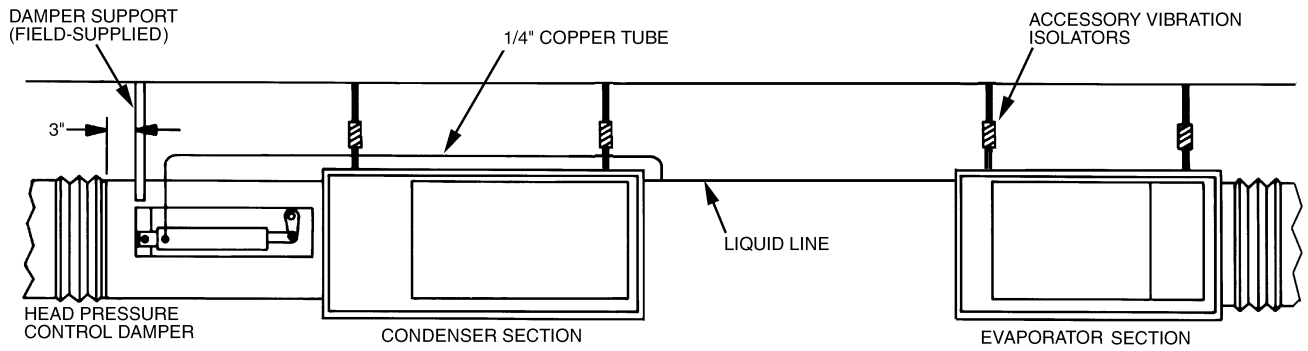


Fig. 3 — Head Pressure Control Damper Installation — Split Configuration

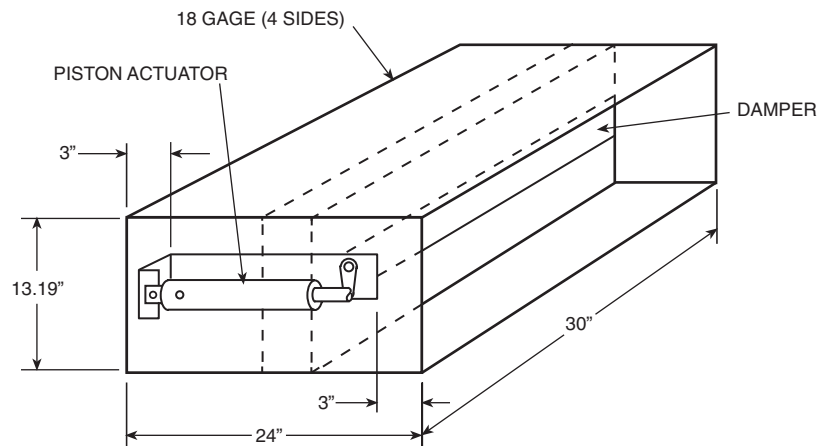


Fig. 4 — Head Pressure Control Damper Dimensions