



39L,T Accessory External Lubrication Line Kit

Installation Instructions

Part Number 39TA-900---101

SAFETY CONSIDERATIONS

Installing, starting up, and servicing air-conditioning equipment can be hazardous due to system pressures, electrical components, and equipment location.

Only trained and qualified installers and service mechanics should install, start up, and service this equipment. When working on the equipment, observe precautions in the literature and on tags, stickers, and labels attached to the equipment. Follow all safety codes. Wear protective equipment such as safety glasses and work gloves.

INTRODUCTION

The external lubrication line kit allows for periodic addition of lubricant to the equipment without entering the cabinet. The kit contains sufficient material to extend the lubrication fittings of 2 fan shaft bearings to the outside of the cabinet.

IMPORTANT: Even with the accessory external lubrication line in place, it is still necessary to periodically inspect the internal components of the equipment. Refer to unit installation instructions.

NOTE: Extending motor lubrication lines is not recommended.

Refer to Table 1 for kit contents.

Table 1 — External Lubrication Line Kit Contents

ITEM	QUANTITY
Mounting Plate	1
Plastic Tube	16 linear ft
Wire Ties	8
Grommets	4
Female Connector	2
Male Connector	2
Straight Grease Fittings, Male	2
Flat Washers, 3/8-in.	4
Self-Drilling Screws	2

INSTALLATION

⚠ WARNING

To avoid possibility of electrical shock and personal injury, all power to unit must be disconnected before working on unit.

Install accessory as follows:

1. Disconnect all power to unit.
2. Access internal components of unit by opening access door on unit cabinet.
3. Locate and remove short lubrication line from outboard bearing (Fig. 1). Replace with plastic tube (in accessory kit). This line should be routed to the drive end of the cabinet.
4. Use mounting plate to locate and drill lubrication line mounting holes in side panel (and double wall, when applicable). Refer to Fig. 1.

IMPORTANT: The mounting plate is mandatory on double wall units to meet electrical code requirements. On single wall units, the end fittings of the external lubrication line may be mounted directly to the cabinet.

Refer to Table 2 for recommended drilled hole sizes.

Table 2 — Recommended Mounting Hole Sizes

Mounting Location	Hole Diameter
Bulkhead (Without Mounting Plate)	3/8 in.
Through Side Panel (With Mounting Plate)	5/8 in.
Double Wall Inside Panel for Grommet	5/8 in.

5. Attach mounting plate using the 2-self-drilling screws provided in kit.
6. Carefully route plastic tube along fan supports, taking care not to kink the tubing and avoiding sharp edges which could cut the plastic tube. Leave a flexible loop in plastic tube where it passes from the fan sled to casing. Secure plastic tube with wire ties.
7. Use grommets (in kit) where tubing passes through sheet metal. Assemble terminal fittings as shown in Fig. 2.
8. Disconnect each tube, one at a time, at the bearing housing and fill tube with grease. Make sure tube is recommended after filling with grease.

IMPORTANT: Do not overtighten the compression fittings. If too tight, the tube may be severed, or the sleeve may become deformed and cause a leak.

9. Reconnect power to unit.

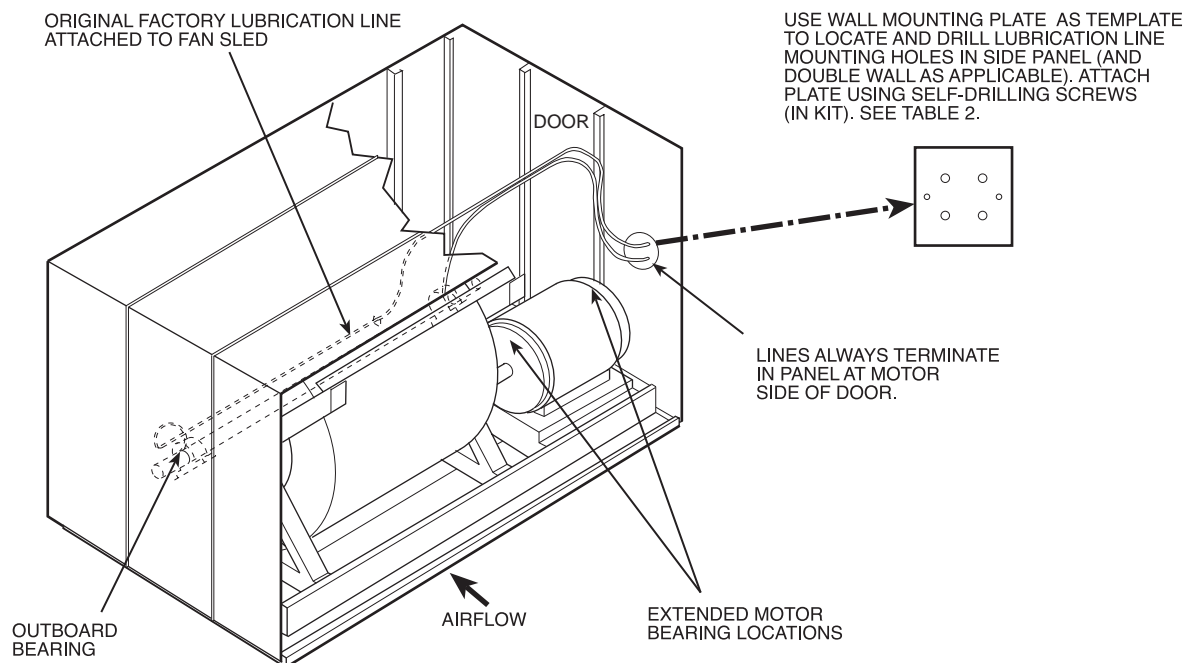


Fig. 1 — Installing Accessory Lubrication Line

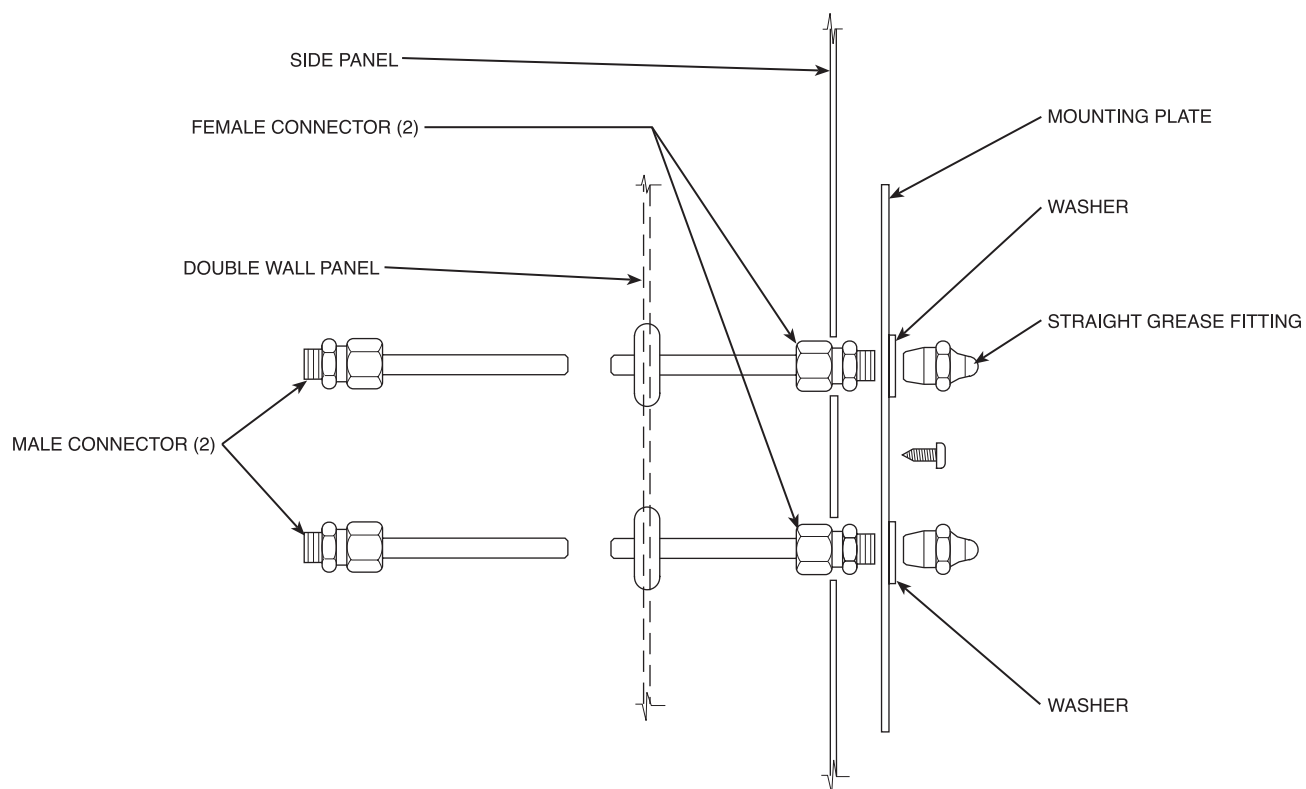


Fig. 2 — Typical Lubrication Line Assembly Sequence