



# Installation Instructions

Part No. 30XV70000501, 30XV70000601, 30RC70001801

## SAFETY CONSIDERATIONS

Installing, starting up, and servicing air-conditioning equipment can be hazardous due to system pressures, electrical components, and equipment locations.

Only trained, qualified installers and service technicians should install, start-up, and service this equipment.

When installing this accessory, observe precautions in the literature and on any labels attached to the equipment, and all other safety precautions that may apply.

- Follow all safety codes.
- Wear safety glasses and work gloves.
- Use care in handling and installing this accessory.

### ⚠ CAUTION

To avoid the possibility of electrical shock, open and tag all disconnects before installing this equipment. Be aware that there may be more than one disconnect.

### ⚠ CAUTION

Only trained, qualified installers and service technicians should install, start-up, and service this equipment. Untrained personnel can perform basic maintenance functions such as cleaning coils. All other operations should be performed by trained service personnel. When working on the equipment, observe precautions in the literature and on tags, stickers, and labels attached to the equipment.

## INTRODUCTION

The accessory condenser hail guard is designed to protect the 30XV and 30RC chillers from harsh weather conditions and debris. See Tables 1 and 2 for accessory package usage of 30XV and 30RC units, respectively. See Table 3 for accessory contents.

Check each item for shipping damage. If any damage is found, file a claim with the shipping agent immediately. If any item is missing or if any part does not assemble properly, notify your Carrier representative.

### ⚠ CAUTION

To avoid damage to the refrigerant coils and electrical components, use extreme care when drilling screw holes and screwing in fasteners.

## Field-Supplied Material

- Zinc-rich paint

Table 1 — 30XV Accessory Package Usage

30XV UNIT SIZE AND TIER <sup>a</sup>		NO. OF PACKAGE(S) REQUIRED FOR ACCESSORY PART NO.	
Size	Tier	30XV70000501	30XV70000601
140	Std	1	0
	Mid	1	0
	High	1	1
160	Std	1	0
	Med	1	1
	High	1	2
180	Std	1	0
	Med	1	1
	High	1	2
200	Std	1	1
	Med	1	2
	High	1	3
225	Std	1	1
	Med	1	2
	High	1	3
250	Std	1	2
	Med	1	3
	High	1	4
275	Std	1	2
	Med	1	3
	High	1	4
300	Std	1	3
	Med	1	4
	High	1	5
325	Std	1	4
	Med	1	5
	High	1	6
350	Std	1	4
	Med	1	5
	High	1	6
400	Std	1	5
	Med	1	6
	High	1	7
450	Std	1	6
	Med	1	7
	High	1	8
500	Std	1	7
	Med	1	8

NOTE(S):

- a. Standard, medium, or high tier is represented by an S, M, or H in the 10th position of the unit model number.

**Table 2 — 30RC Accessory Package Usage**

30RC UNIT SIZE	NO. OF PACKAGE(S) REQUIRED FOR ACCESSORY PART NO.	
	30RC70001801	30XV70000601
065	1	0
067	1	0
070	1	0
072	1	0
080-C <sup>a</sup>	1	0
080	1	1
082	1	0
090	1	1
092-C <sup>a</sup>	1	0
092	1	1
100	1	1
102-C <sup>a</sup>	1	0
102	1	1
110	1	1
112	1	1
120-C <sup>a</sup>	1	1
120	1	2
122-C <sup>a</sup>	1	1
122	1	2
130	1	2
132-C <sup>a</sup>	1	1
132	1	2
150	1	2
152-C <sup>a</sup>	1	1
152	1	2
162-C <sup>a</sup>	1	2
162	1	3
182-C <sup>a</sup>	1	3
182	1	4
202-C <sup>a</sup>	1	3
202	1	4
232-C <sup>a</sup>	1	4
232	1	5
252-C <sup>a</sup>	1	4
252	1	5

NOTE(S):

a. Compact units are represented by a "C" in the 10th position of the unit model number.

**Table 3 — Accessory Contents**

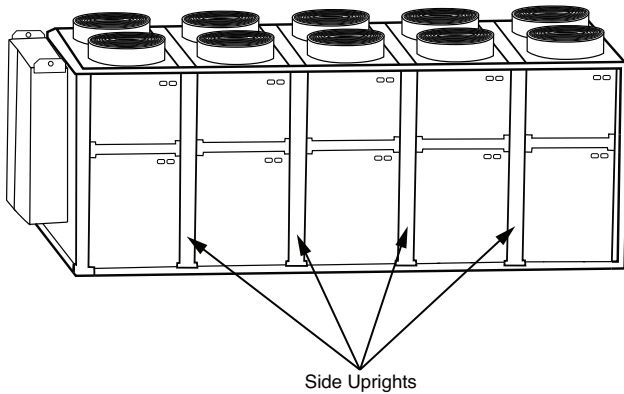
ACCESSORY PART NO.	DESCRIPTION	ITEM NO.	QTY
30XV70000501	Side Upright, 30XV50061901	1	6
	Side Channel Assembly, 30XV40042601	2	4
	Side Channel Assembly, 30XV40042501	3	4
	End Channel Assembly, 30XV40036701	4	1
	Control Box Angle Support, 30XV50124201	5	1
	Louvered Side End Panel, 30XV50062101	6	4
	Louvered Side End Panel, 30XV50062102	7	4
	Louvered Side Panel, 30XV50062001	8	4
	Louvered Side Panel, 30XV50062002	9	4
	Louvered End Panel, 2000639858	10	1
	Louvered End Panel, 2000639863	11	1
	End Channel Assembly, 2000529644	12	1
	Louvered End Panel, 30XV50037602	13	2
	End Wire Guard, 30XV50036802	14	1
	Louvered End Panel, 30XV50122701	15	1
	Louvered End Panel, 30XV50122801	16	1
	Screws, 00PPN500000304A	17	300
30RC70001801	Side Upright, 30XV50061901	1	2
	Side Channel Assembly, 30XV40042501	3	4
	End Channel Assembly, 30XV40036701	4	1
	Louvered Side End Panel, 30XV50062101	6	4
	Louvered Side End Panel, 30XV50062102	7	4
	Louvered End Panel, 2000639858	10	1
	Louvered End Panel, 2000639863	11	1
	End Channel Assembly, 2000529644	12	1
	Louvered End Panel, 30XV50037602	13	2
	End Wire Guard, 30XV50036802	14	1
	Louvered End Panel, 30XV50122701	15	1
	Screws, 00PPN500000304A	17	180
	Louvered End Panel, 2003120813	18	1
	Louvered End Panel, 2003120817	19	1
	Louvered End Panel, 2003148321	20	1
	Louvered End Panel, 2003120805	21	1
	Control Box Angle Support, 2003120709	22	1
	Screws, 00PPN500000301A	23	4
30XV70000601	Side Upright, 30XV50061901	1	2
	Side Channel Assembly, 30XV40042601	2	2
	Louvered Side Panel, 30XV50062001	8	2
	Louvered Side Panel, 30XV50062002	9	2
	Screws, 00PPN500000304A	17	80

## INSTALLATION

**IMPORTANT:** Hail guard accessory is designed for installation after unit is installed. The upright and lower panels will block the lifting points for the chiller.

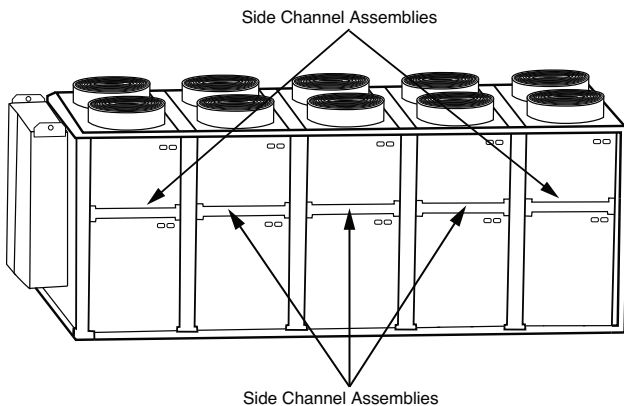
**NOTE:** Numbers in parentheses are item numbers unless indicated. Not all panels in kit will be used for every unit size.

1. Disconnect all power to unit.
2. Attach side uprights (1) between each V section on both sides of unit. Use 2 screws (17) at the top and 2 screws (17) at the bottom of each upright. See Fig. 1.



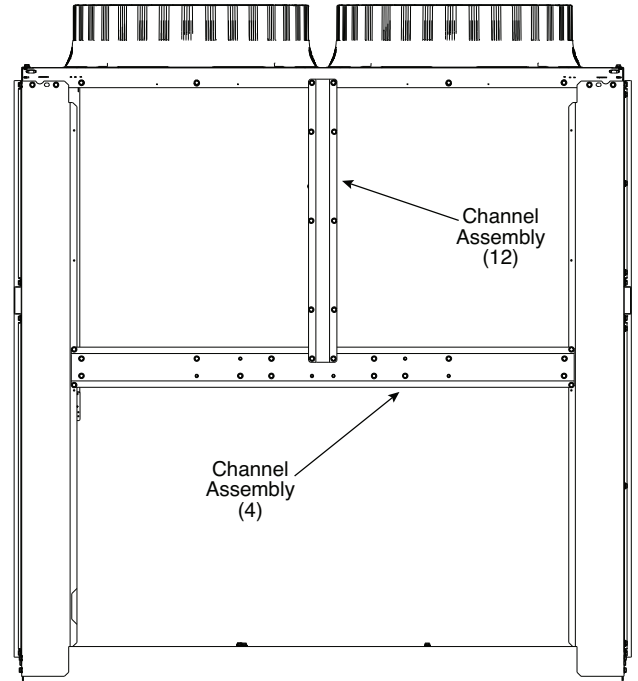
**Fig. 1 — Side Uprights**

3. Attach side channel assemblies (2 and 3) horizontally between uprights (1) on sides of chiller. Use channel assembly (3) on the end sections and channel assembly (2) in the other locations. Use 4 screws (17), two on each end of the side channel assemblies. See Fig. 2.



**Fig. 2 — Side Channel Assemblies**

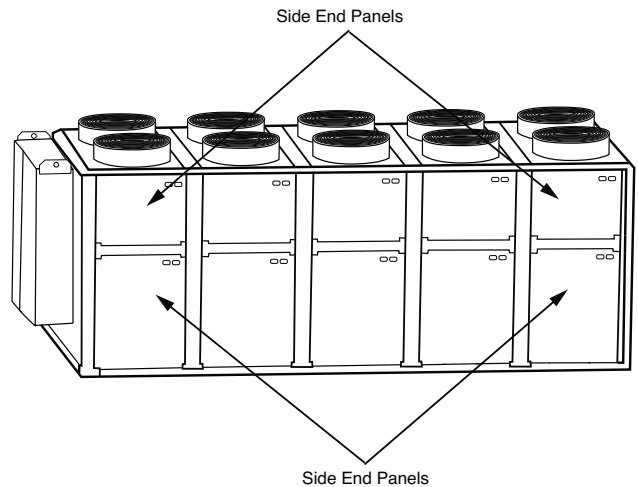
4. Attach the end channel assemblies (4 and 12) to the end of the unit, opposite the control box. End channel assembly (4) will be installed horizontally and end channel assembly (12) will be installed vertically. Use 4 screws (17), two on each channel assembly. See Fig. 3.



**Fig. 3 — End Channel Assembly**

5. Attach side end panels (6 and 7) to the four corners, nearest the end of the unit, using one screw (17) at each clearance hole. See Fig. 4.

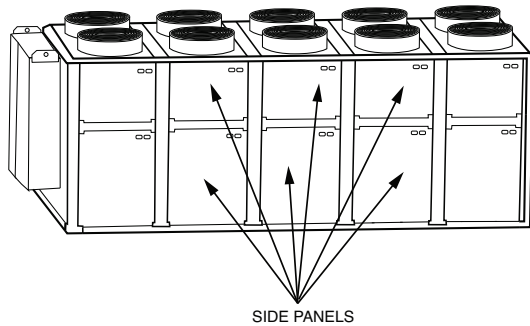
**NOTE:** Item 6 is the top panel and Item 7 is the bottom panel.



**Fig. 4 — Side End Panels**

6. Attach side panels (8 and 9) to each side of the unit to cover the area between the side end panels. Use one screw (17) on each panel. See Fig. 5.

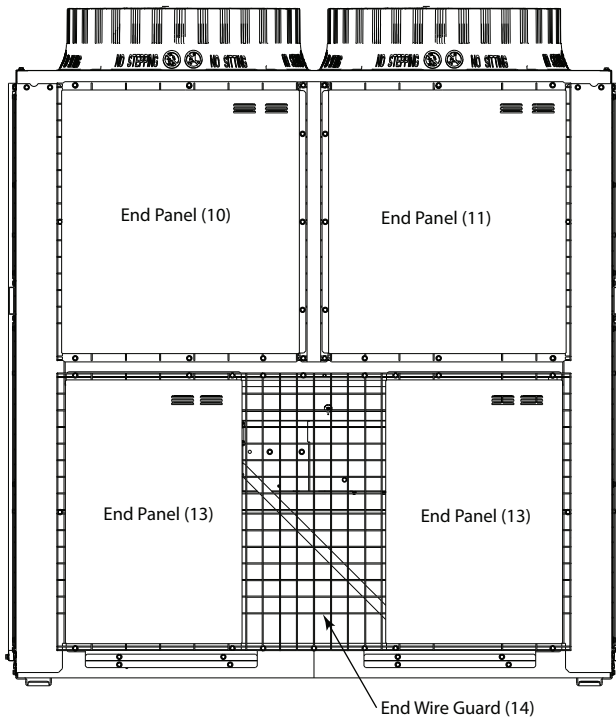
NOTE: Item 8 is the top panel and Item 9 is the lower panel.



**Fig. 5 — Side Panels**

7. Attach end panels (10, 11, and 13) and end wire guard (14) to the end of unit (opposite the control box). Attach panels with one screw (17) at each clearance hole in each panel. Place screws (17) between grille rods that are spaced closely together. See Fig. 6.

NOTE: Item 10 is the top left panel, Item 11 is the top right panel, and Item 13 is the lower panels.

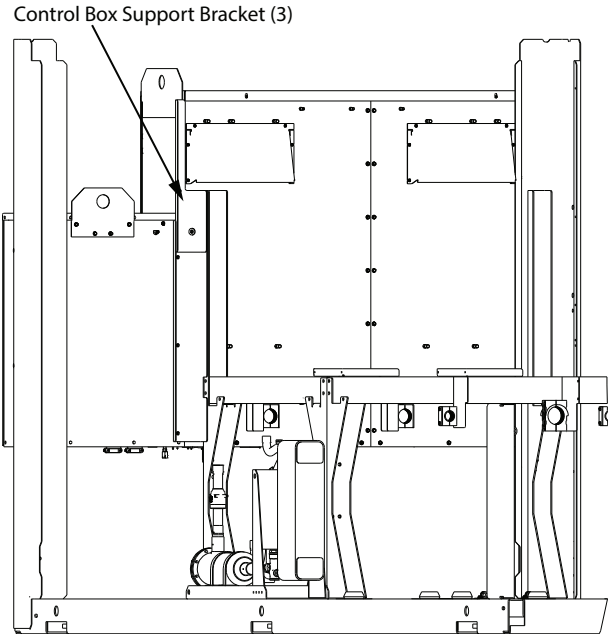


**Fig. 6 — Louvered End Panels and End Wire Guard**

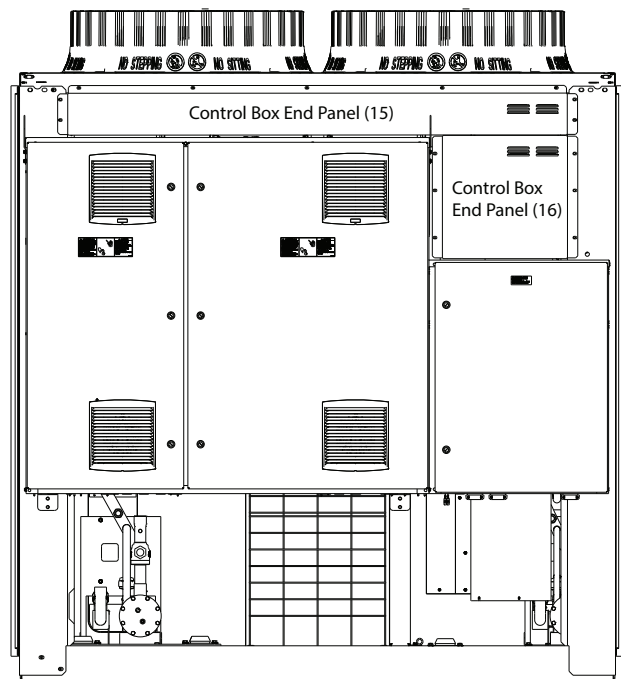
8. Piping may exit through the end grille, end panel, or side grille depending on the unit. Cut grille rods as required to provide opening for water lines. Coat ends of cut rods with zinc-rich paint to protect against rust.
9. Attach control box angle support, if required, and panel(s) to the control box end of unit.

For 30XV units:

- a. On unit sizes 140 to 325, attach angle support (5) to the control box support bracket using two screws (17). See Fig. 7. The angle support is not required for unit sizes 350 to 500.
- b. On unit sizes 140 to 325, attach end panels (15 and 16) using screws (17) at each clearance hole in each panel. Item 15 is the top panel and Item 16 is the right panel. See Fig. 8. Louvered panels are not required on the control box end for unit sizes 350 to 500.



**Fig. 7 — 30XV Control Box Bracket**

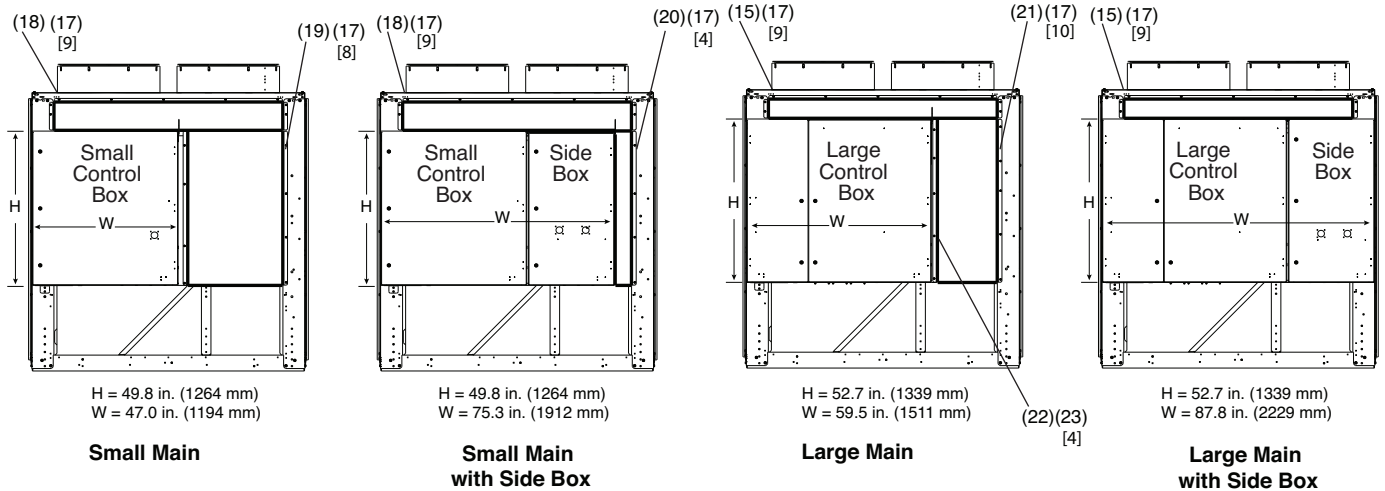


**Fig. 8 — 30XV Control Box Panels**

For 30RC units:

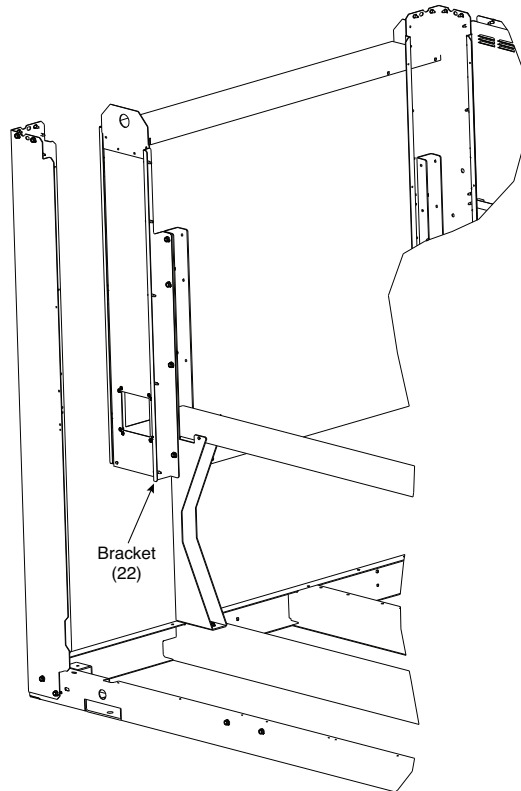
- Refer to Fig. 9 to determine which control box the 30RC unit is utilizing.
- For units with Large Main control box, attach the angle support (22) to the control box support bracket using four screws (23). See Fig. 10. The angle support is not required for units with any other control box size.
- For units with Small Main control box, attach control box end panels (18 and 19). For units with Small Main

with Side Box control box, attach control box end panels (18 and 20). For units with Large Main control box, attach control box end panels (15 and 21). For units with Large Main with Side Box control box, attach control box end panel (15). In all cases, attach control box end panels using screws (17) and place screws in each clearance hole for each panel. Reference Fig. 9 for panel location and number of screws (17) needed for each control box size.



NOTE: Numbers in [ ] represent the required quantity of Item 17 and 23 screws.

**Fig. 9 — 30RC Control Box Size and Panel Location**



**Fig. 10 — 30RC Large Main Control Box Bracket**





