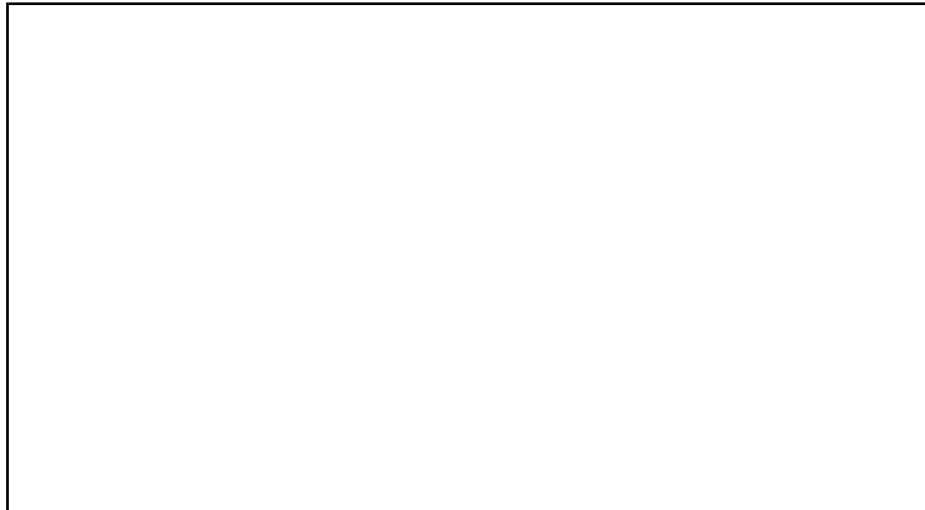




09DK-2SB

**09DK020,024,028,034,044
AIR-COOLED CONDENSERS**

- PERFORMANCE DATA**
- CERTIFIED DIMENSION PRINT**



Date:	Supersedes:	09DK020,024,028,034,044 AIR-COOLED CONDENSERS	09DK	Rev.: -1SB
JOB NAME:		LOCATION:		
BUYER:		BUYER P.O. #	CARRIER #	
UNIT NUMBER:		MODEL NUMBER:		
PERFORMANCE DATA CERTIFIED BY:			DATE:	



DESCRIPTION

These units are used as remote air-cooled condensers with vertical package units, liquid chilling packages or compressor units. The unit is constructed of pre-painted steel that meets 500-hour salt spray requirements. Condenser fan motors are 3 phase TEFC (Totally Enclosed Fan Cooled). Condenser coils have an integral subcooling circuit.

FEATURES

Standard one-year warranty.
UL and CSA listed (no UL on 575 v).
Pre-painted steel cabinet meets 500-hour salt spray requirement.
3-phase TEFC condenser fan motors have internal overload protection.

Coils constructed of aluminum plate fins on mechanically expanded copper tubes.
Base rail construction provides lifting holes and does not require field-installed mounting legs.

PERFORMANCE DATA

Refrigerant _____
Total Heat of Rejection _____
Saturated Condensing Temperature (SCT) _____

Ambient Air Temperature _____
Discharge Line Loss _____
Minimum Ambient Air Temperature _____

ELECTRICAL DATA

Unit Power Supply: _____ Volts, _____ Phase, _____ Hertz
Condenser Fan Motor Input _____ kW
Minimum Circuit Amps _____
Maximum Overcurrent Protection Amps _____

OPTIONS (Factory Installed)

☐ Copper/Copper Condenser Coil

ACCESSORIES (Field Installed)

☐ Motormaster® low ambient head pressure control to -20° F ambient
☐ Fan cycling control

CUT ALONG DOTTED LINE

CUT ALONG DOTTED LINE

→ CERTIFIED DIMENSION PRINT



UNITED
TECHNOLOGIES
CARRIER

P O BOX 4808
SYRACUSE N. Y.
13221

THIS DOCUMENT IS THE PROPERTY OF CARRIER CORPORATION
AND IS DELIVERED UPON THE EXPRESS CONDITION THAT THE
CONTENTS WILL NOT BE DISCLOSED OR USED WITHOUT CARRIER
CORPORATION'S WRITTEN CONSENT.

SUBMISSION OF THESE DRAWINGS OR DOCUMENTS
DOES NOT CONSTITUTE PART PERFORMANCE OR
ACCEPTANCE OF CONTRACT

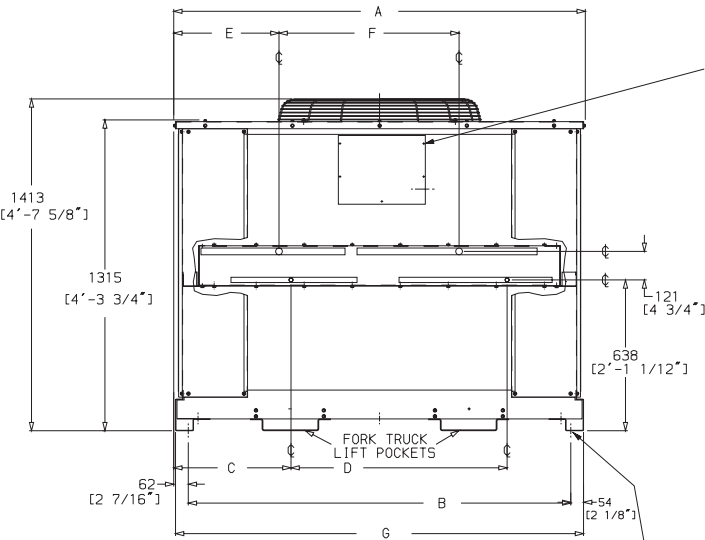
UNIT (50/60 Hz)	DIMENSIONS mm [ft.-in.]								
	A	B	C	D	E	F	G	H	J
09DK020, 024	1131 [3'-8 1/2"]	1007 [3'-3 1/16"]	240 [9 7/16"]	432 [1'-0"]	228 [0'-9"]	559 [1'-10"]	1115 [3'-7 9/16"]	628 [2'-0 11/16"]	1403 [4'-7 3/16"]
09DK020C, 024C									
09DK028	1742 [5'-8 5/8"]	1619 [5'-3 3/4"]	496 [1'-7 9/16"]	914 [3'-0"]	445 [1'-5 1/2"]	762 [2'-6"]	1726 [5'-8"]	933 [3'-0 11/16"]	1391 [4'-6 1/16"]
09DK028C									

NOTES:

- There must be 1220 mm [4'-0"] for service and for unrestricted airflow on all sides of unit.
- There must be minimum 2440 mm [8'-0"] clear air space above unit.
- The approximate operating weight of the unit is:

UNIT (50/60 Hz)	TOTAL		OPERATING WT. AT SUPPORT POINTS			
	Wt (Lbs)	Wt (Kg)	1 & 2		3 & 4	
09DK020, 024	797	361.5	186	84.4	212	96.2
09DK020C, 024C	921	417.8	215	97.5	245	111.1
09DK028	983	445.9	229	103.9	262	118.8
09DK028C	1137	515.7	268	121.6	300	136.1

4. Dimensions are in millimeters. Dimensions in [] are in feet-inches.



FIELD CONTROL CIRCUIT WIRING
22.2 [7/8"] DIA.

CONTROL BOX

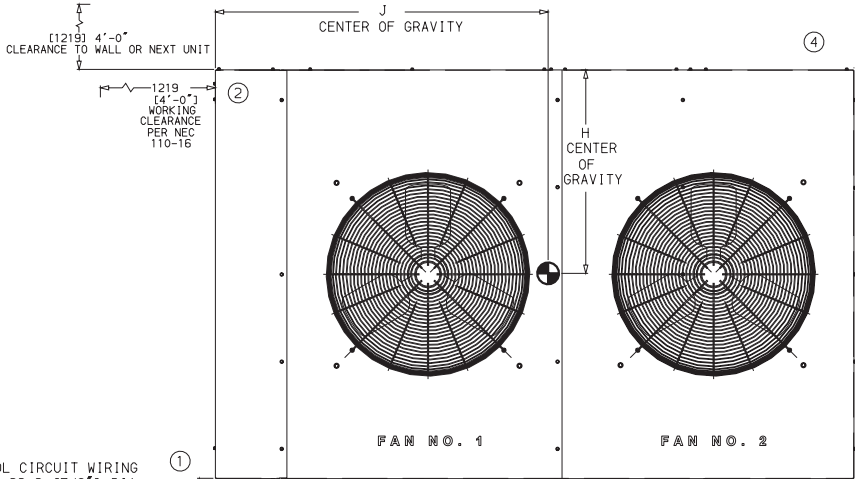
HOT GAS COIL CONNECTION
28.5
[1 1/8"] I.D.
TYP (2) PLACES

LIQUID COIL CONNECTION
15.9
[5/8"] I.D.
TYP (2) PLACES

63.5
[2 1/2"] DIA.
LIFTING

34.9
[1 3/8"] DIA.
FOR 25.4 [1"] CONDUIT
USING REDUCING WASHERS
FOR FIELD POWER ENTRY

19.1
[3/4"] DIA.
MOUNTING HOLES
(TYP 4 PLACES)



FIELD MAIN POWER SUPPLY
34.9 [1 3/8"] DIA.

AIRFLOW THRU
CONDENSER

112 [4 7/16"]

125 [4 15/16"]

86 [3 3/8"]

447 [1'-5 5/8"]

552 [1'-3 3/4"]

1141 [3'-8 15/16"]

2432 [7'-11 3/4"]

2714 [8'-10 7/8"]

100 [3 15/16"]

43 [1 11/16"]

22.2 [7/8"] DIA.
FIELD CONTROL
POWER ENTRY
(FAR SIDE ONLY.)

FORK TRUCK
LIFT POCKETS
BOTH SIDES

63.5
[2 1/2"] DIA.
LIFTING

DATE
02/24/94

SUPERSIDES
12/19/89

09DK020-028 AIR COOLED CONDENSER

09DK500121

REV
C

→ CERTIFIED DIMENSION PRINT



UNITED
TECHNOLOGIES
CARRIER

P.O. BOX 4808
SYRACUSE, N. Y.
13221

THIS DOCUMENT IS THE PROPERTY OF CARRIER CORPORATION
AND IS DELIVERED UPON THE EXPRESS CONDITION THAT THE
CONTENTS WILL NOT BE DISCLOSED OR USED WITHOUT CARRIER
CORPORATION'S WRITTEN CONSENT.

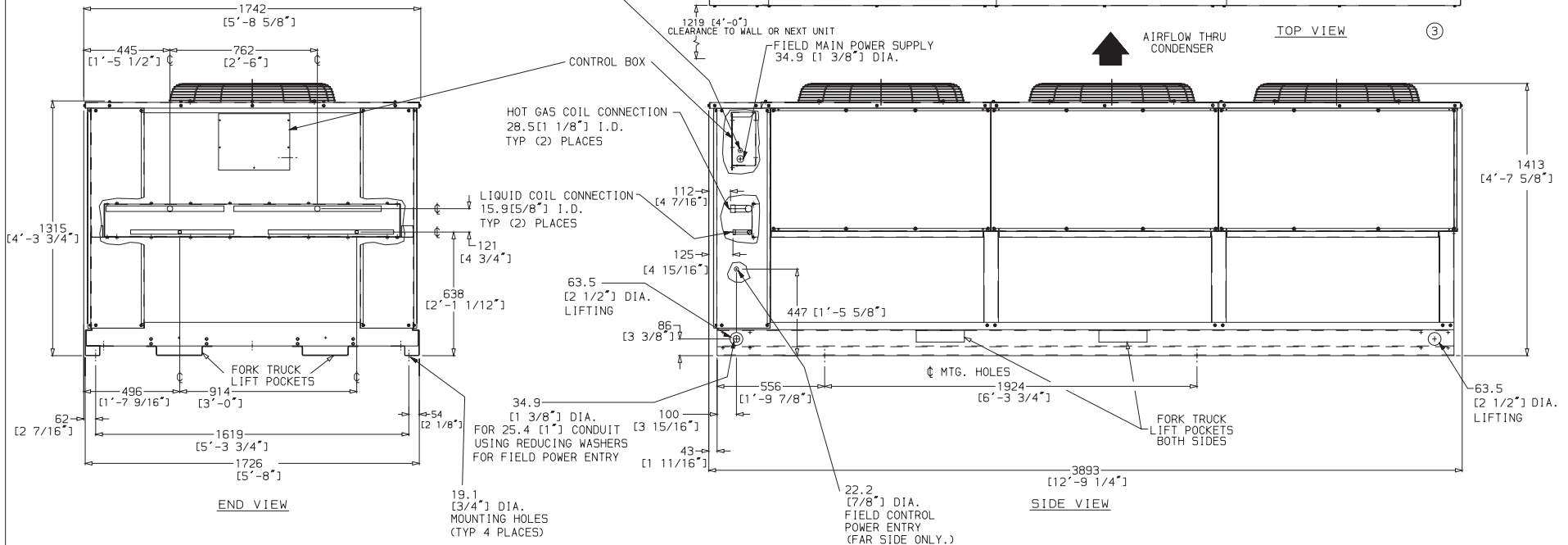
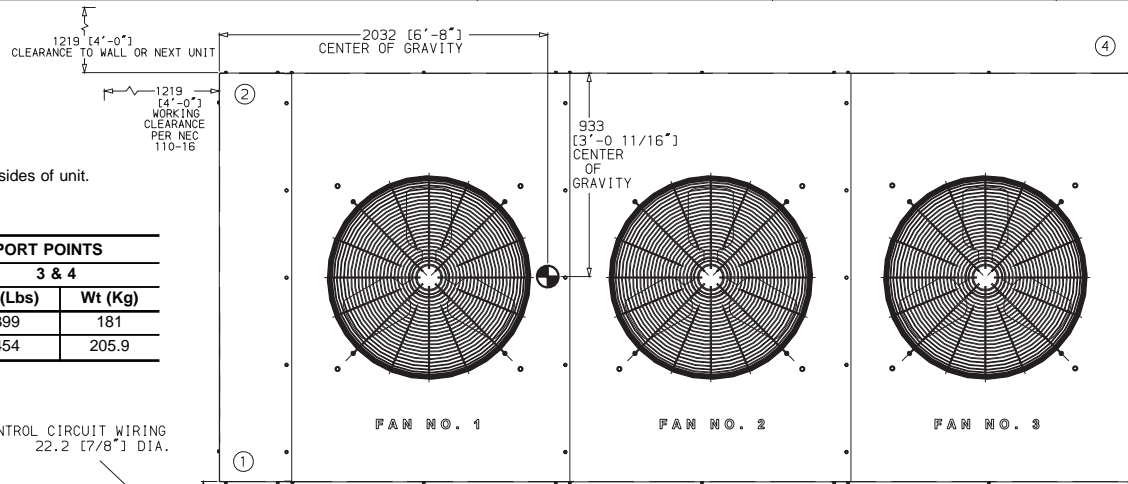
SUBMISSION OF THESE DRAWINGS OR DOCUMENTS
DOES NOT CONSTITUTE PART PERFORMANCE OR
ACCEPTANCE OF CONTRACT

NOTES:

1. There must be 1220 mm [4'-0"] for service and for unrestricted airflow on all sides of unit.
2. There must be minimum 2440 mm [8'-0"] clear air space above unit.
3. The approximate operating weight of the unit is:

UNIT (50/60 Hz)	TOTAL		OPERATING WT. AT SUPPORT POINTS			
	Wt (Lbs)	Wt (Kg)	1 & 2		3 & 4	
09DK034	1495	678.1	349	158.3	399	181
09DK034C	1700	1771.1	396	179.6	454	205.9

4. Dimensions are in millimeters. Dimensions in [] are in feet-inches.



DATE
02/24/94

SUPERSEDES
12/19/89

09DK034 AIR COOLED CONDENSER

09DK500122

REV
C

CUT ALONG DOTTED LINE

CUT ALONG DOTTED LINE

→ CERTIFIED DIMENSION PRINT



UNITED
TECHNOLOGIES
CARRIER

P.O. BOX 4808
SYRACUSE, N. Y.
13221

THIS DOCUMENT IS THE PROPERTY OF CARRIER CORPORATION
AND IS DELIVERED UPON THE EXPRESS CONDITION THAT THE
CONTENTS WILL NOT BE DISCLOSED OR USED WITHOUT CARRIER
CORPORATION'S WRITTEN CONSENT.

SUBMISSION OF THESE DRAWINGS OR DOCUMENTS
DOES NOT CONSTITUTE PART PERFORMANCE OR
ACCEPTANCE OF CONTRACT

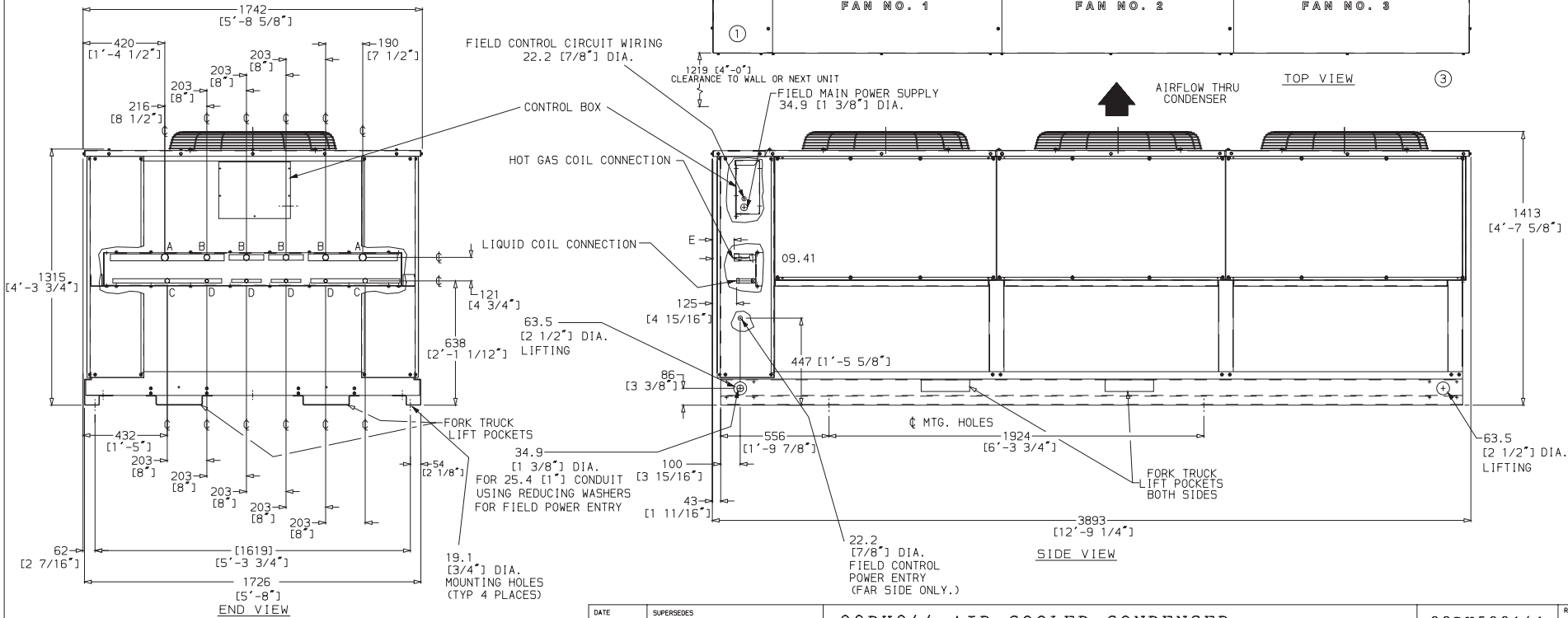
UNIT (50/60 Hz)	DIMENSIONS mm [in.]				
	A	B	C	D	E
09DK044	34.9 I.D. [1 3/8"]	28.5 I.D. [1 1/8"]	22.2 I.D. [7/8"]	15.9 I.D. [5/8"]	See Note 5
09DK044C					

NOTES:

1. There must be 1220 mm [4'-0"] for service and for unrestricted airflow on all sides of unit.
2. There must be minimum 2440 mm [8'-0"] clear air space above unit.
3. The approximate operating weight of the unit is:

UNIT (50/60 Hz)	TOTAL		OPERATING WT. AT SUPPORT POINTS			
	Wt (Lbs)	Wt (Kg)	1 & 2		3 & 4	
09DK044	1676	760.2	391	177.4	447	202.8
09DK044C	1984	900	462	209.6	529	240

4. Dimensions are in millimeters. Dimensions in [] are in feet-inches.
5. Dimension "E" for 34.9 mm I.D. is 118 mm [4 5/8"].
Dimension "E" for 28.5 mm I.D. is 112 mm [4 1/2"].



DATE
02/24/94

SUPERSEDES
05/15/90

09DK044 AIR COOLED CONDENSER

09DK500141

REV
A

