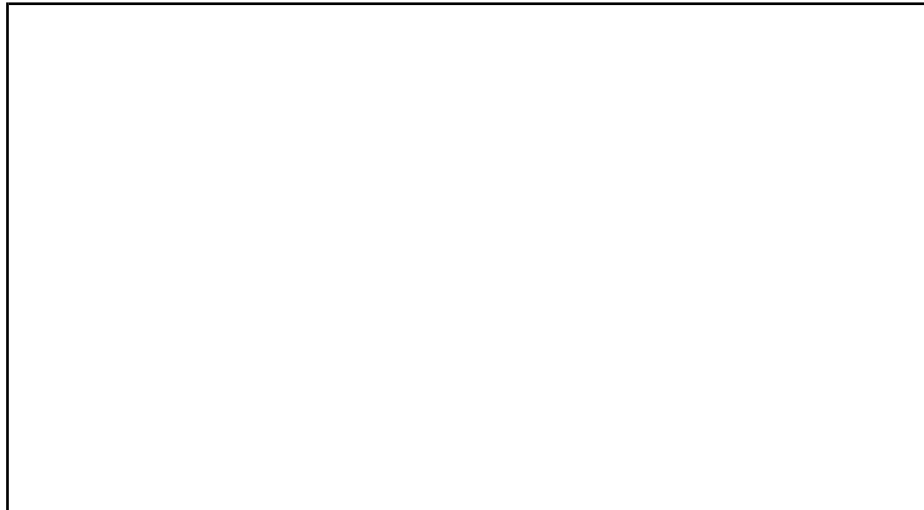




**09DK-4SB**

# **09DK054, 064, 074, 084, 094 AIR-COOLED CONDENSERS**

- PERFORMANCE DATA**
- CERTIFIED DIMENSION PRINT**



Date:	Supersedes:	<b>09DK054,064,074,084,094</b> <b>AIR-COOLED CONDENSERS</b>	09DK	Rev.: -4SB
JOB NAME:		LOCATION:		
BUYER:		BUYER P.O. #	CARRIER #	
UNIT NUMBER:		MODEL NUMBER:		
PERFORMANCE DATA CERTIFIED BY:			DATE:	

### DESCRIPTION



These units are used as remote air-cooled condensers with vertical package units, liquid chilling packages or compressor units. The unit is constructed of pre-painted steel that meets 500 hour salt spray requirements. Condenser fan motors are 3 phase and are protected against single-phasing conditions. Condenser coils have an integral subcooling circuit.

### FEATURES

Standard one-year warranty.  
UL and CSA listed.  
Pre-painted steel cabinet meets 500 hour salt spray requirement.  
3-phase condenser fan motors have internal overload protection.  
Hinged doors for control box access.  
All refrigerant connections are on one side of the unit.

Coils constructed of aluminum lanced sine-wave fins on mechanically expanded internally enhanced copper tubes.  
Base rail construction provides lifting holes and does not require field-installed mounting legs.  
Fan cycling head pressure control.  
Small unit footprint for minimal space requirements.

### PERFORMANCE DATA

Refrigerant _____	Ambient Air Temperature _____
Total Heat of Rejection _____	Discharge Line Loss _____
Saturated Condensing Temperature (SCT) _____	Minimum Ambient Air Temperature _____

### ELECTRICAL DATA

Unit Power Supply \_\_\_\_\_ Volts \_\_\_\_\_ Ph \_\_\_\_\_ Hz  
Condenser Fan Motor Input \_\_\_\_\_ kW  
Minimum Circuit Amps \_\_\_\_\_  
Maximum Overcurrent Protection Amps \_\_\_\_\_

### OPTIONS (Factory Installed)

☐ Copper/Copper Condenser Coil

### ACCESSORIES (Field Installed)

☐ Motormaster® III Low Ambient Head Pressure Controls to -20° F Ambient  
☐ Fan Sound Reduction Kit  
☐ Condenser Coil Coastal Filter  
☐ Security Grille Packages  
☐ Condenser Coil Hail Guard Package  
☐ Accessory Control Transformer  
☐ Accessory Fan Control Kit  
☐ Motormaster III Relay/Sensor Kit

CUT ALONG DOTTED LINE

CUT ALONG DOTTED LINE

## CERTIFIED DIMENSION PRINT



UNITED  
TECHNOLOGIES  
CARRIER

P O BOX 4808  
SYRACUSE N. Y.  
13221

THIS DOCUMENT AND THE INFORMATION CONTAINED THEREIN IS  
PROPRIETARY TO CARRIER CORPORATION AND SHALL NOT BE USED  
OR DISCLOSED TO OTHERS, IN WHOLE OR IN PART, WITHOUT THE  
WRITTEN AUTHORIZATION OF CARRIER CORPORATION.

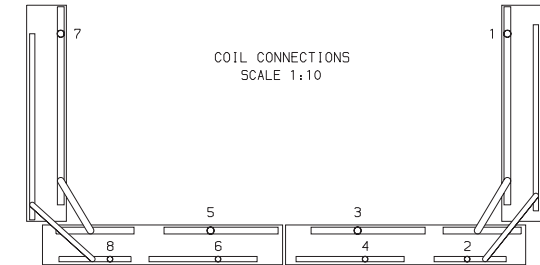
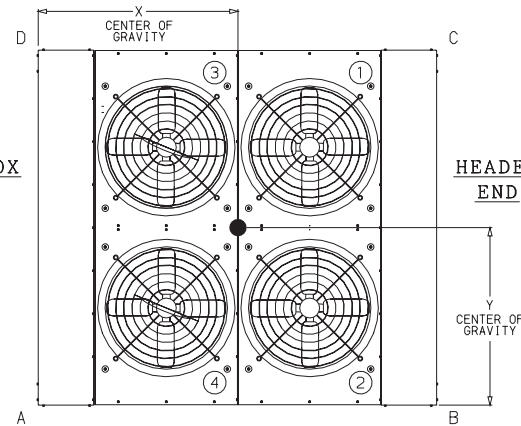
SUBMISSION OF THESE DRAWINGS OR DOCUMENTS  
DOES NOT CONSTITUTE PART PERFORMANCE OR  
ACCEPTANCE OF CONTRACT

## NOTES:

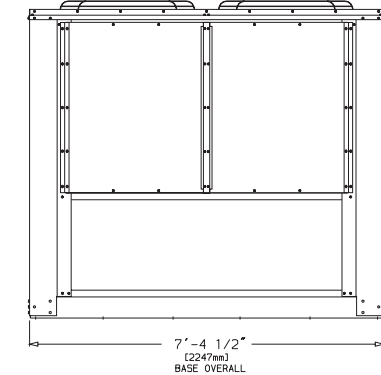
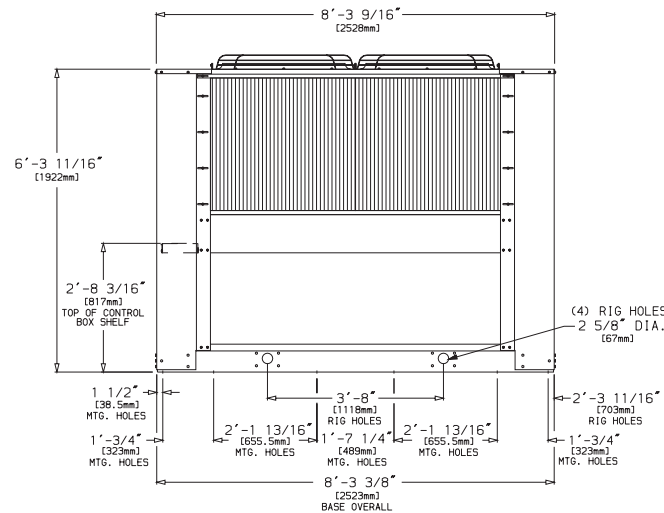
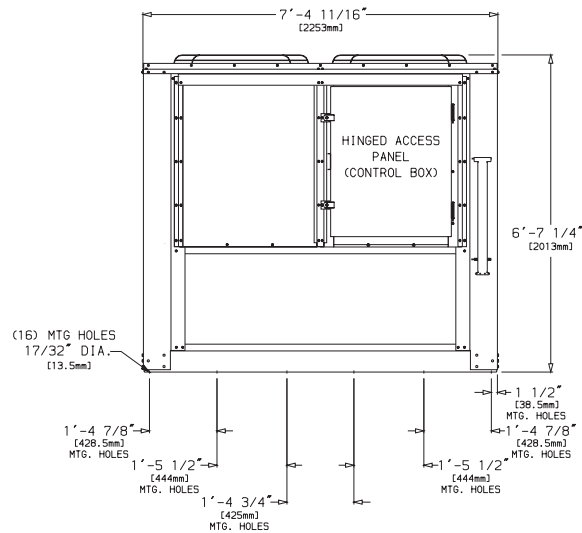
- The approximate operating weight of the unit is:  
09DK-054--- — 1695 Lbs [769 Kg]  
09DK-054---C — 1983 Lbs [900 Kg]  
09DK-064--- — 1845 Lbs [837 Kg]  
09DK-064---C — 2278 Lbs [1033 Kg]
- Unit must have clearances for airflow as follows:  
Top — Do not restrict in any way.  
Ends — 5 ft [1524 mm]  
Sides — 6 ft [1829 mm]
- All units are shipped with a capacity split tubing kit. This kit may be used by the field to obtain 100%, 50%/50% and 67%/33% capacity splits. To obtain a 33%/33%/33% capacity split, coils must be manifolded by the field. Coils are factory circuited for a 33%/33%/17%/17% capacity split.

CONTROL BOX  
END

UNIT	DIMENSION Y	DIMENSION X	OPERATING CORNER WEIGHTS			
			A	B	C	D
09DK-054---	3'-6 <sup>11</sup> / <sub>16</sub> " [1084 mm]	4'-1 <sup>1</sup> / <sub>8</sub> " [1222 mm]	452 Lbs [205 Kg]	425 Lbs [193 Kg]	396 Lbs [180 Kg]	422 Lbs [191 Kg]
09DK-054---C	3'-6 <sup>7</sup> / <sub>8</sub> " [1090 mm]	4'-5 <sup>5</sup> / <sub>16</sub> " [1227 mm]	524 Lbs [238 Kg]	497 Lbs [225 Kg]	468 Lbs [212 Kg]	494 Lbs [224 Kg]
09DK-064---	3'-6 <sup>3</sup> / <sub>4</sub> " [1087 mm]	4'-3 <sup>9</sup> / <sub>16</sub> " [1224 mm]	489 Lbs [222 Kg]	462 Lbs [210 Kg]	434 Lbs [197 Kg]	459 Lbs [208 Kg]
09DK-064---C	3'-7 <sup>1</sup> / <sub>8</sub> " [1095 mm]	4'-1 <sup>1</sup> / <sub>2</sub> " [1232 mm]	598 Lbs [271 Kg]	571 Lbs [259 Kg]	542 Lbs [246 Kg]	568 Lbs [258 Kg]



CAPACITY SPLIT	CONNECTIONS		
	Type	No. 5	Size
100%	Hot Gas	1, 3, 5, 7	1 <sup>1</sup> / <sub>8</sub> " I.D.
	Liquid	2, 4, 6, 8	7/8" I.D.
50%/50%	Hot Gas	1, 3	5, 7
	Liquid	2, 4	6, 8
67%/33%	Hot Gas	1, 3, 5	7
	Liquid	2, 4, 6	8
33%/33%/33%	Hot Gas	1	7, 3, 5
	Liquid	2	8, 4, 6
33%/33%/17%/17%	Hot Gas	1	7, 3, 5
	Liquid	2	8, 4, 6



DATE  
1/4/93

SUPSEDES

—

09DK054,064 AIR COOLED CONDERSERS

09DK500317

REV  
—

# CERTIFIED DIMENSION PRINT



UNITED  
TECHNOLOGIES  
CARRIER

P O BOX 4808  
SYRACUSE N. Y.  
13221

THIS DOCUMENT AND THE INFORMATION CONTAINED THEREIN IS  
PROPRIETARY TO CARRIER CORPORATION AND SHALL NOT BE USED  
OR DISCLOSED TO OTHERS, IN WHOLE OR IN PART, WITHOUT THE  
WRITTEN AUTHORIZATION OF CARRIER CORPORATION.

SUBMISSION OF THESE DRAWINGS OR DOCUMENTS  
DOES NOT CONSTITUTE PART PERFORMANCE OR  
ACCEPTANCE OF CONTRACT

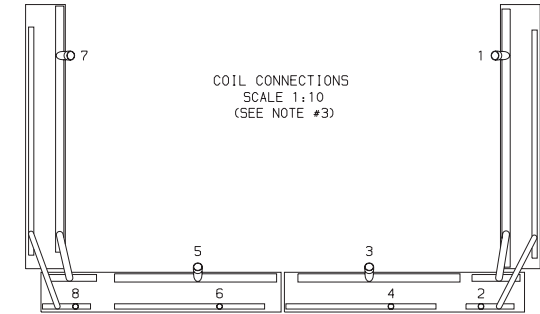
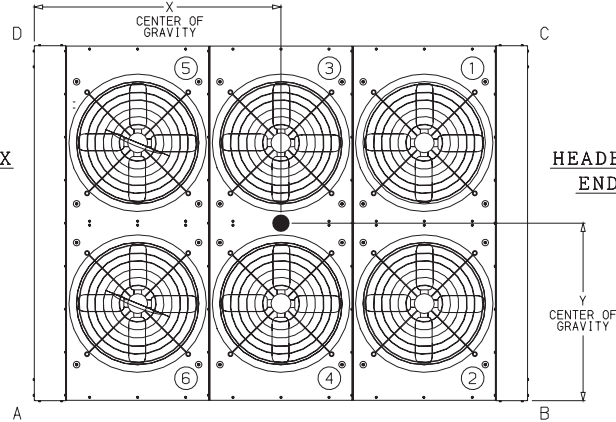
## NOTES:

- The approximate operating weight of the unit is:  
09DK-074--- — 2200 Lbs [998 Kg]  
09DK-074--C — 2617 Lbs [1187 Kg]  
09DK-084--- — 2421 Lbs [1098 Kg]  
09DK-084--C — 3099 Lbs [1406 Kg]
- Unit must have clearances for airflow as follows:  
Top — Do not restrict in any way.  
Ends — 5 ft [1524 mm]  
Sides — 6 ft [1829 mm]
- All units are shipped with a capacity split tubing kit. This kit may be used by the field to obtain 100%, 50%/50% and 67%/33% capacity splits. To obtain a 33%/33%/33% capacity split, coils must be manifolded by the field. Coils are factory circuited for a 33%/33%/17%/17% capacity split.

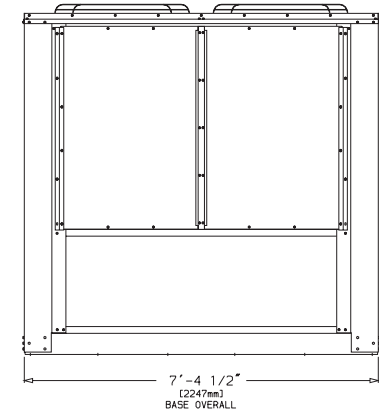
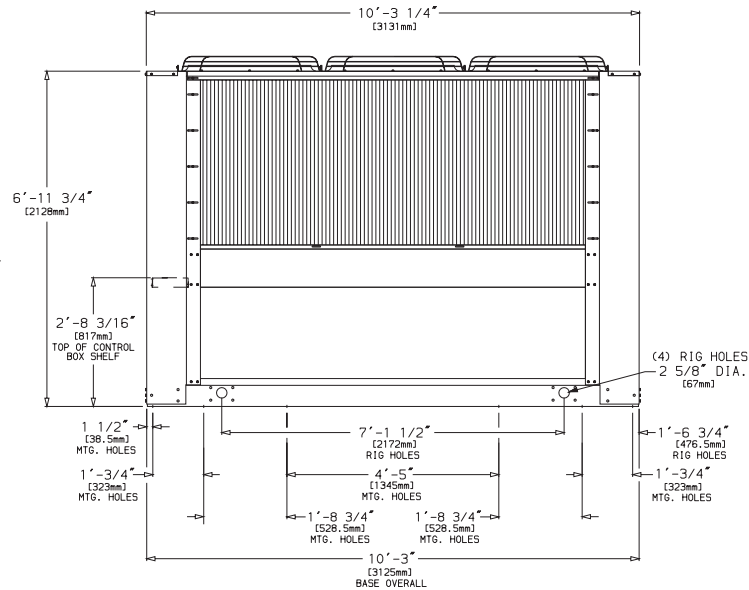
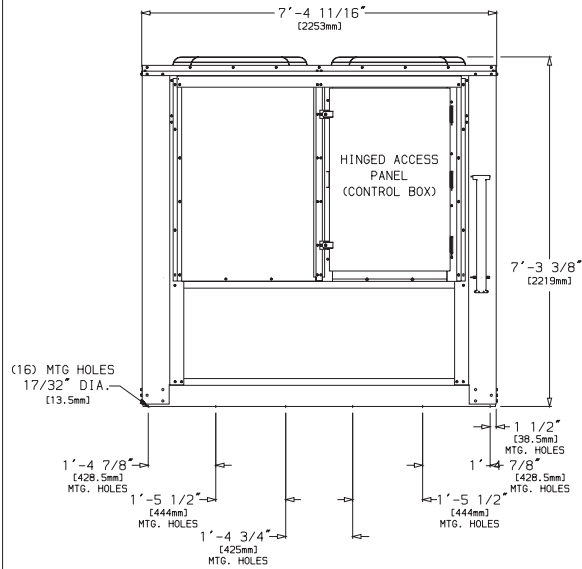
CONTROL BOX  
END

HEADER  
END

UNIT	DIMENSION Y	DIMENSION X	OPERATING CORNER WEIGHTS			
			A	B	C	D
09DK-074---	3'-6 1/2" [1080 mm]	4'-8 11/16" [1440 mm]	618 Lbs [280 Kg]	526 Lbs [239 Kg]	486 Lbs [220 Kg]	571 Lbs [259 Kg]
09DK-074--C	3'-6 13/16" [1087 mm]	4'-9 3/8" [1458 mm]	722 Lbs [328 Kg]	630 Lbs [286 Kg]	589 Lbs [267 Kg]	675 Lbs [306 Kg]
09DK-084---	3'-6 5/8" [1082 mm]	4'-9 1/8" [1450 mm]	673 Lbs [305 Kg]	581 Lbs [264 Kg]	541 Lbs [245 Kg]	626 Lbs [284 Kg]
09DK-084--C	3'-7" [1092 mm]	4'-10 1/8" [1476 mm]	843 Lbs [382 Kg]	751 Lbs [341 Kg]	709 Lbs [322 Kg]	796 Lbs [361 Kg]



CAPACITY SPLIT	CONNECTIONS		
	Type	No. 5	Size
100%	Hot Gas	1, 3, 5, 7	1 1/2" I.D.
	Liquid	2, 4, 6, 8	3/4" I.D.
50%/50%	Hot Gas	1, 3	5, 7
	Liquid	2, 4	6, 8
67%/33%	Hot Gas	1, 3, 5	7
	Liquid	2, 4, 6	8
33%/33%/33%	Hot Gas	1	7
	Liquid	2	8
33%/33%/17%/17%	Hot Gas	1	7
	Liquid	2	8



DATE  
1/4/93

SUPERSEDES

-

09DK074,084 AIR-COOLED CONDENSERS

09DK500318

REV

-

CUT ALONG DOTTED LINE

CUT ALONG DOTTED LINE

→ CERTIFIED DIMENSION PRINT



UNITED  
TECHNOLOGIES  
CARRIER

P O BOX 4808  
SYRACUSE N. Y.  
13221

THIS DOCUMENT AND THE INFORMATION CONTAINED THEREIN IS  
PROPRIETARY TO CARRIER CORPORATION AND SHALL NOT BE USED  
OR DISCLOSED TO OTHERS, IN WHOLE OR IN PART, WITHOUT THE  
WRITTEN AUTHORIZATION OF CARRIER CORPORATION.

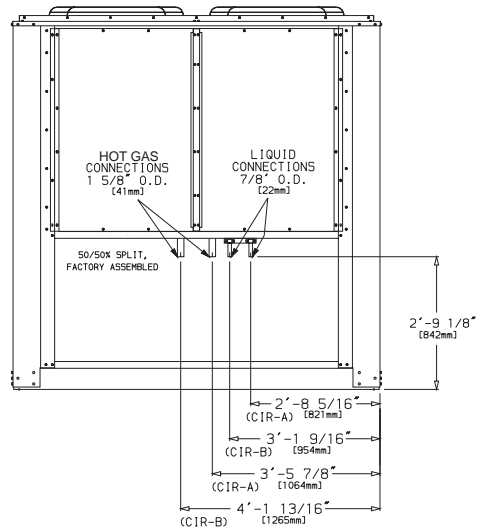
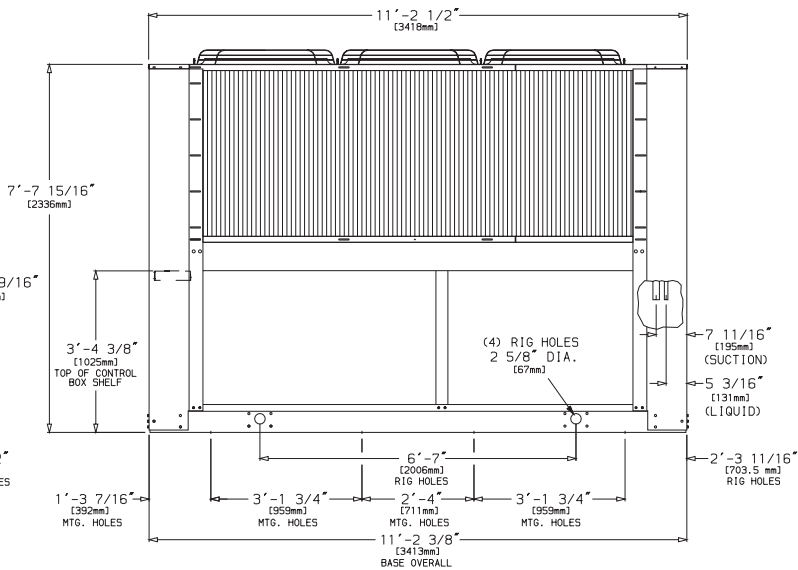
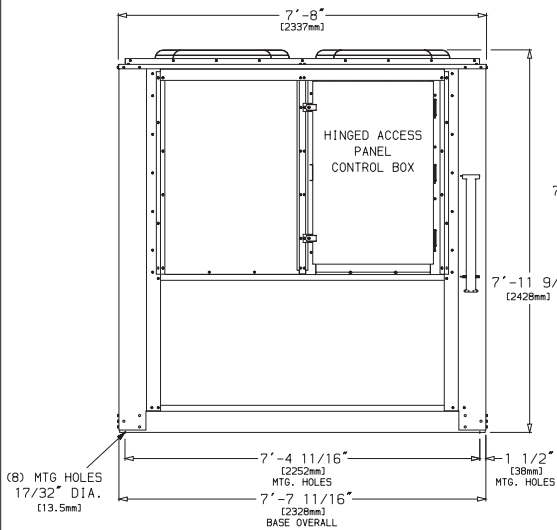
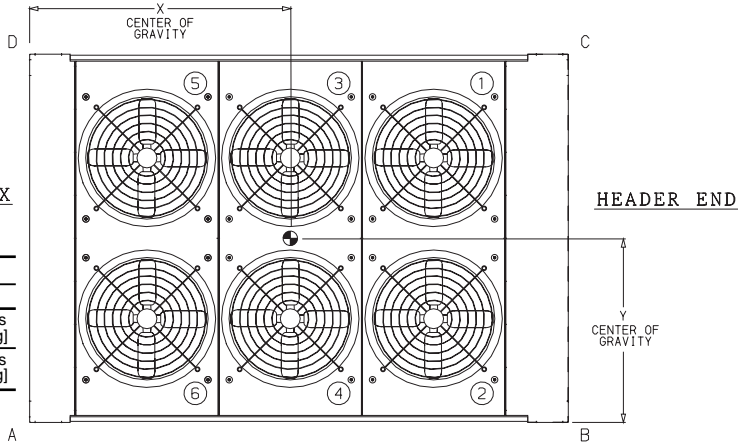
SUBMISSION OF THESE DRAWINGS OR DOCUMENTS  
DOES NOT CONSTITUTE PART PERFORMANCE OR  
ACCEPTANCE OF CONTRACT

NOTES:

- The approximate operating weight of the unit is:  
09DK-094--- — 2850 Lbs [1294 Kg]  
09DK-094--C — 3560 Lbs [1615 Kg]
- Unit must have clearances for airflow as follows:  
Top — Do not restrict in any way.  
Ends — 5 ft [1524 mm]  
Sides — 6 ft [1829 mm]
- Mounting holes may be used to mount unit to concrete pad. They are not recommended for mounting unit to spring isolators. If spring isolators are used, a perimeter support channel between the unit and the isolators is recommended.

CONTROL BOX  
END

UNIT	DIMENSION Y	DIMENSION X	OPERATING CORNER WEIGHTS			
			A	B	C	D
09DK-094---	5'-2 <sup>7</sup> / <sub>8</sub> " [1597 mm]	3'-9 <sup>3</sup> / <sub>8</sub> " [1148 mm]	769 Lbs [349 Kg]	676 Lbs [307 Kg]	658 Lbs [299 Kg]	747 Lbs [339 Kg]
09DK-094--C	5'-2 <sup>7</sup> / <sub>8</sub> " [1597 mm]	3'-9 <sup>3</sup> / <sub>8</sub> " [1148 mm]	960 Lbs [436 Kg]	845 Lbs [383 Kg]	821 Lbs [372 Kg]	934 Lbs [424 Kg]



DATE  
11/03/93

SUPERSEDES

—

09DK094 AIR-COOLED CONDENSER

09DK500340

REV  
—





