



Installation Instructions

Part No. CRCNTRKT010A00

GENERAL

⚠ WARNING

EQUIPMENT DAMAGE HAZARD

Failure to follow this warning could result in personal injury and damage to equipment.

To prevent injuries and rain damage, do not leave roof opening uncovered. If unit installation is not completed immediately after adapter curb is installed, provide an adequate temporary cover for the roof opening.

Follow all local, state, and other applicable codes when installing the accessory roof curb adapters. See Table 1 for Package Contents.

Features

- Curb centering brackets
- Used on non-Carrier roof curbs

SAFETY CONSIDERATIONS

Improper installation, adjustment, alteration, service, maintenance, or use can cause explosion, fire, electrical shock, or other conditions which may cause death, personal injury, or property damage. Consult a qualified installer, service agency, or your distributor or branch for information or assistance. The qualified installer or agency must use factory-authorized kits or accessories when modifying this product. Refer to the individual instructions packaged with the kits or accessories when installing.

Follow all safety codes. Wear safety glasses, protective clothing, and work gloves. Have a fire extinguisher available. Read these instructions thoroughly and follow all warnings or cautions included in literature and attached to the unit. Consult local building codes, the current editions of the National Fuel Gas Code (NFGC) NFPA 54/ANSI Z223.1, and the National Electrical Code (NEC) NFPA 70.

In Canada refer to the current editions of the National Standards of Canada CAN/CSA-B149.1 and .2 Natural Gas and Propane Installation Codes, and Canadian Electrical Code CSA C22.1.

Recognize safety information. This is the safety-alert symbol ⚠. When you see this symbol on the unit and in instructions or manuals, be alert to the potential for personal injury. Understand the signal words DANGER, WARNING, and CAUTION. These words are used with the safety-alert symbol. DANGER identifies the most serious hazards which will result in severe personal injury or death. WARNING signifies hazards which could result in personal injury or death. CAUTION is used to identify unsafe practices which may result in minor personal injury or product and property damage. NOTE is used to highlight suggestions which will result in enhanced installation, reliability, or operation.

Table 1 — Package Contents

ITEM NO.	DESCRIPTION	QTY
1	End Support Bracket (48VV009211)	2
2	Side Support Bracket (48VV009212)	4
3	Bag of Screws	1

CENTERING KIT INFORMATION

- To verify that the curb centering kit shown in Fig. 1-3 is the correct accessory for your job, be sure to check the unit's base measurement from the certified drawings and field verify the existing curb dimension.
NOTE: Dimensions are in inches.
- Before the new HVAC unit is set in place, inspect structural stability of existing curb and the building's roof load capability. Reinforce if required.
- Centering kits are designed to align 48/50V Compact Chassis unit to fit over select non-Carrier curbs on replacement projects. The centering kit accessory is not designed to fit over curb adapters, it should only be used over existing roof curbs.
- Do not use the centering kit brackets as wind and seismic restraining brackets. The brackets and hardware are designed only for centering the unit during rigging and not as a wind or seismic restraining device.
- Designs are based on standard factory dimensions, and may differ in the field.

INSTALLATION

1. Before installing curb centering kit:
 - a. Verify all centering kit parts have been received per Table 1.
 - b. Ensure that existing unit is not mounted on a curb adapter, as the centering kit is only designed to be used on a non-Carrier curb.
2. Secure the (2) end support brackets (48VV009211) on return air end of the existing non-Carrier curb using screws. For reference see Fig. 1-4.
3. Secure the (4) side support brackets (48VV009212), (2) brackets on each length side of the existing non-Carrier curb using screws. For reference see Fig. 1-3.
4. Make sure all centering kit brackets are secured in place before installing the unit. See Fig. 3.
5. Install the 48/50V compact chassis unit while making sure the Supply Air and Return Air duct connections are properly aligned.
NOTE: Secure the unit by inserting the remaining screws through the support bracket into the unit. This step is optional. See Fig. 4.

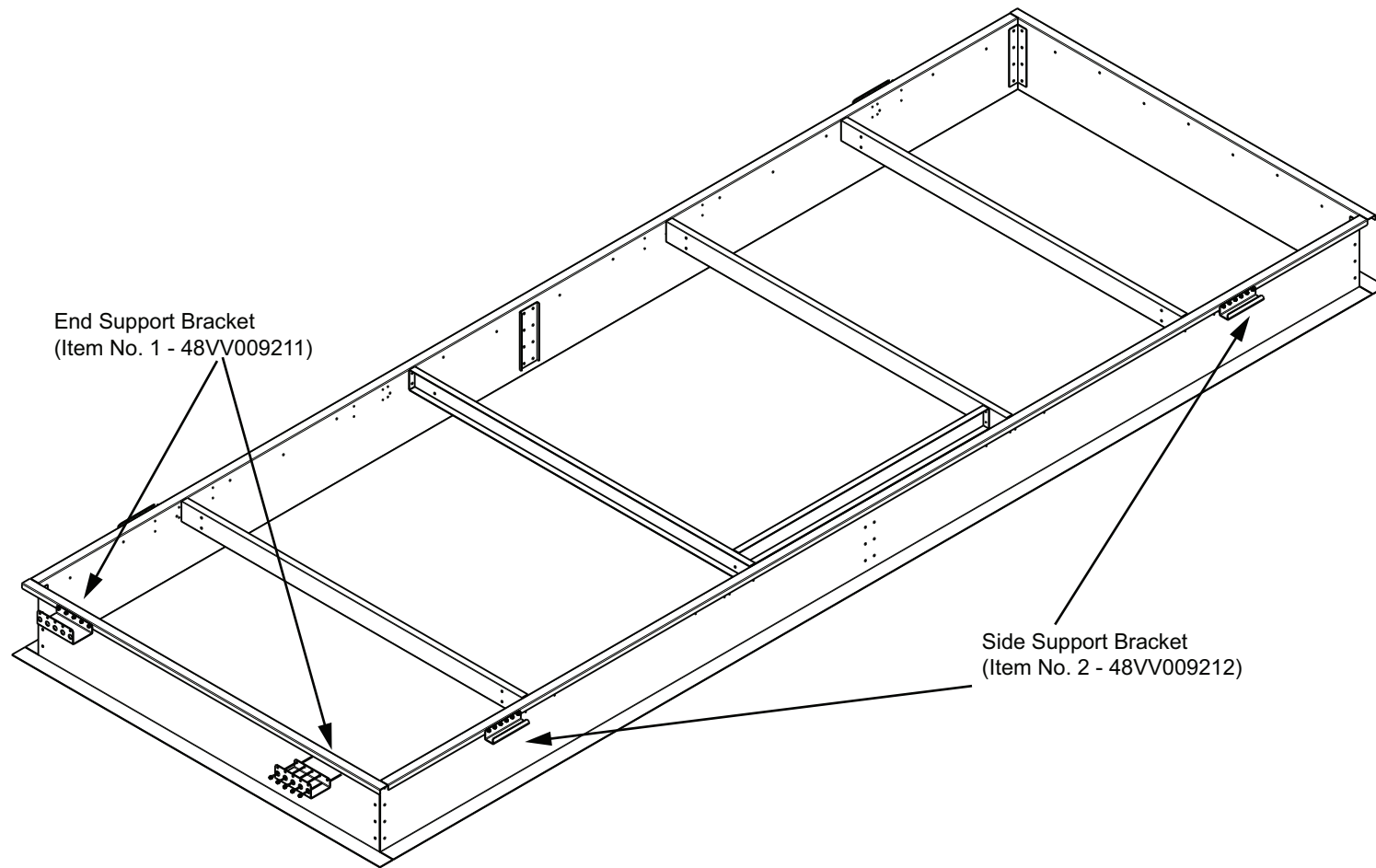


Fig. 1 — CRCNTRKT010A00 — Centering Kit Support Brackets

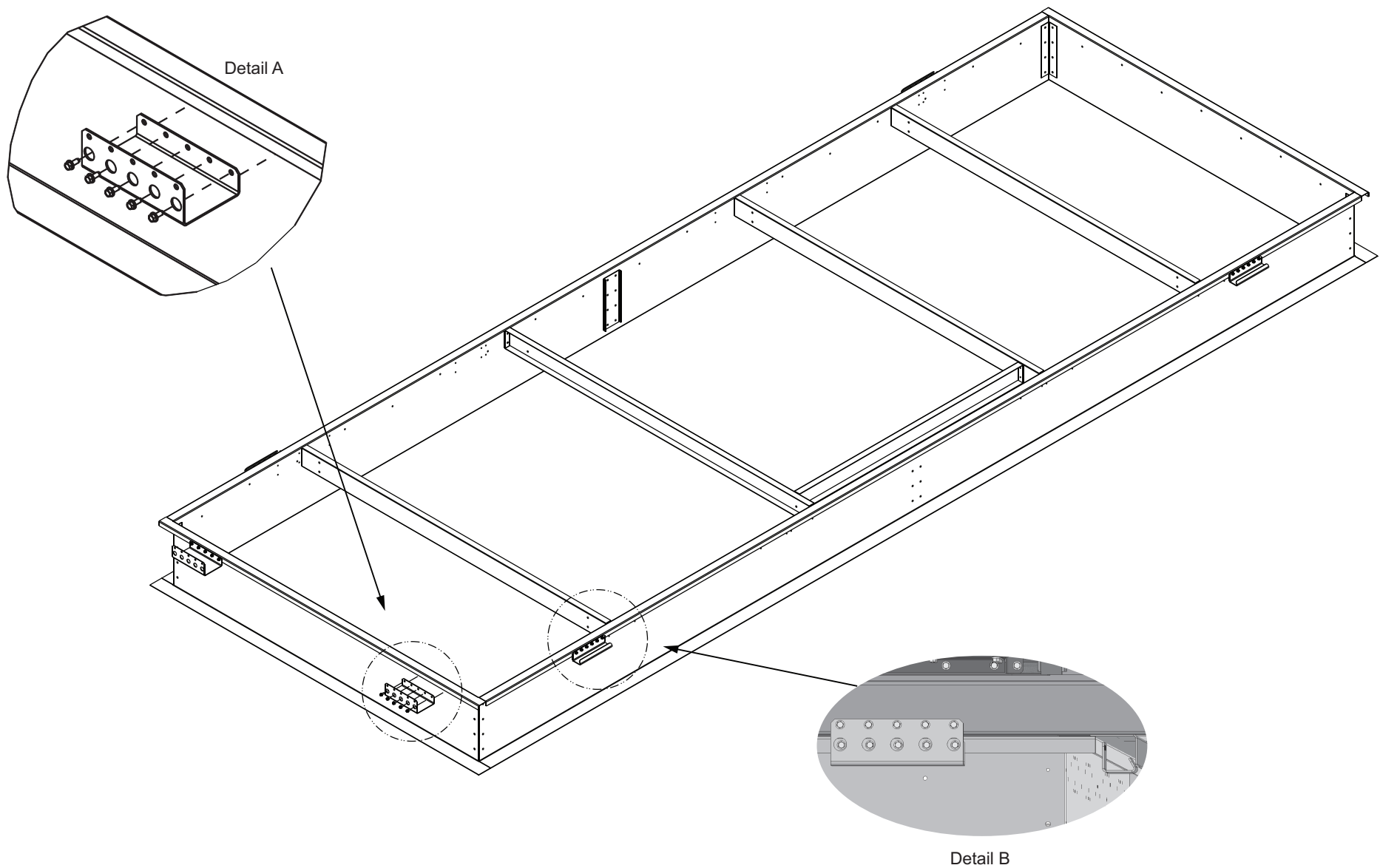


Fig. 2 — CRCNTRKT010A00 — End and Side Bracket Positioning

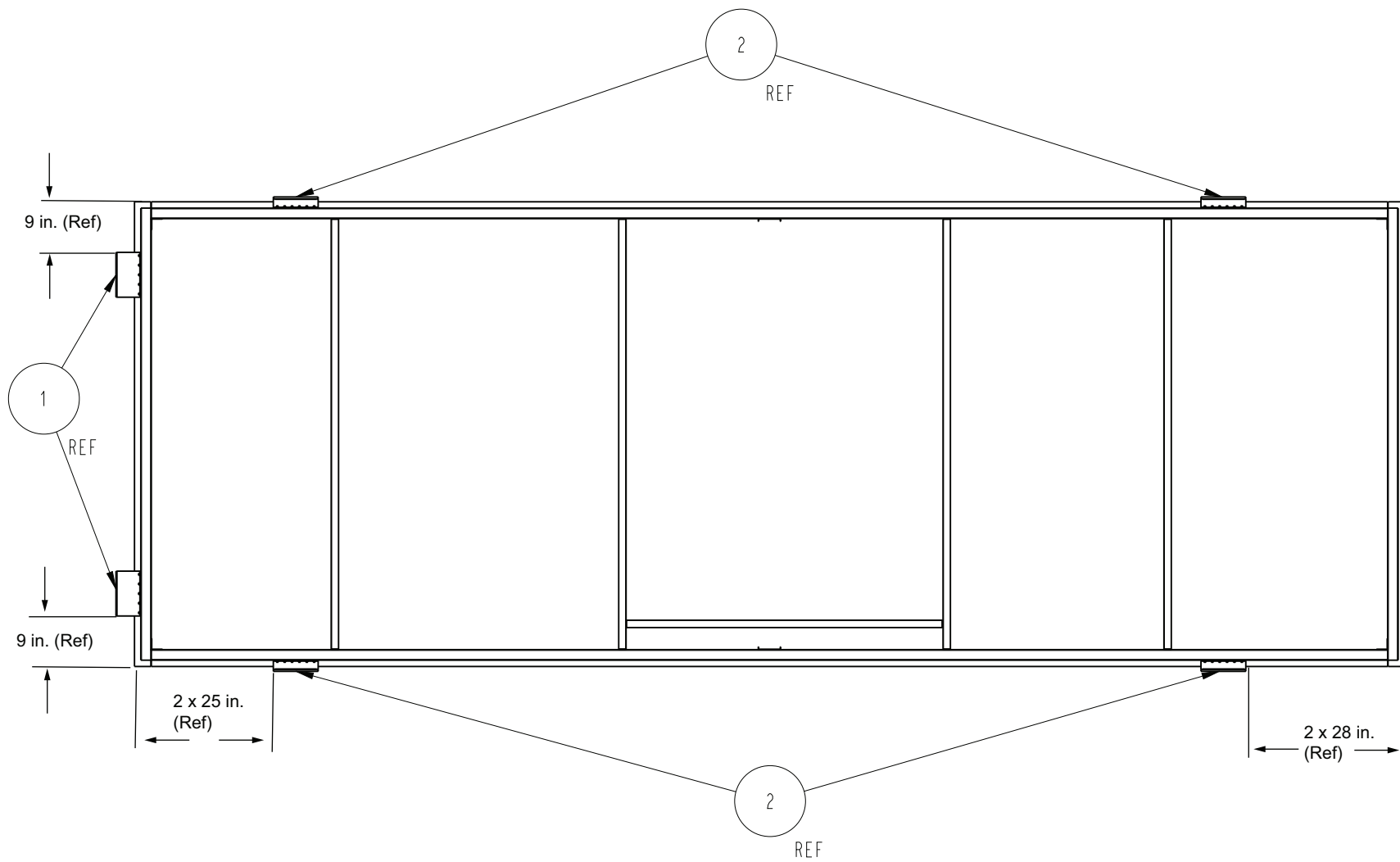


Fig. 3 — CRCNTRKT010A00 — Centering Kit for Compact Chassis

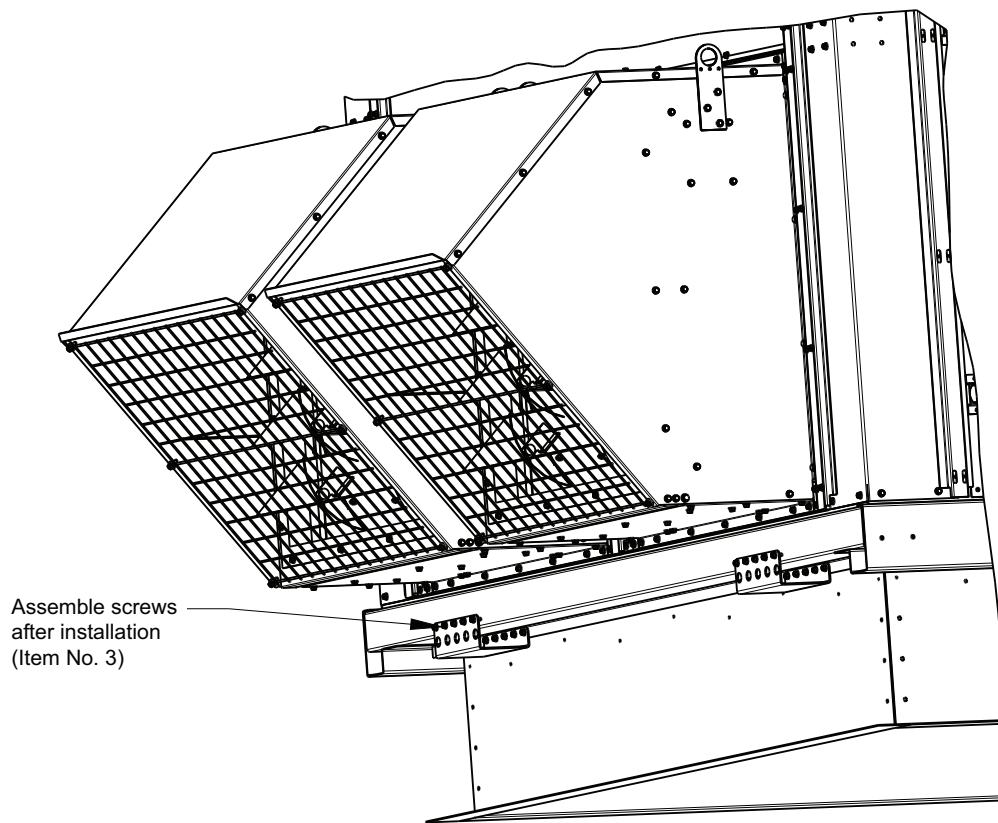


Fig. 4 — 48/50V Compact Chassis End Bracket

