

Owner's Manual



A12479

NOTE: Read the entire instruction manual before starting the installation.

The features and functions outlined in this Owner's Manual reflect Version 14 software. See the Downloads section of www.MyEvolutionConnex.Bryant.com for the latest software release and literature.

US Patents: Carrier U.S. Pat No. 7,243,004, Carrier U.S. Pat No. 7,775,452, pointSET™ U.S. Pat No. 7,415,102

TABLE OF CONTENTS

	PAGE
INTRODUCTION	1
HOME SCREEN	1
Information Displayed	1
Wi-Fi Connectivity	2
Information Buttons	4
MAIN SCREEN	5
System Mode	5
Set Day and Time	6
Adjust Temperature (Temporary Hold)	6
Adjusting Comfort Activities	6
Adjusting Heating	7
Adjusting Cooling	7
Adjust Temperature (Permanent Hold)	8
Adjusting Comfort Profiles	8
Adjusting Heating	8
Adjusting Cooling	9
FEATURES	11
Adjust Fan Speed	11
View Current Humidity Level	11
MENU SCREEN	12
COMFORT PROFILES	12
Home Humidity Control	14

TABLE OF CONTENTS (cont.)

	PAGE
Home Fresh Air Control	16
Away Humidity Control	17
Away Fresh Air Control	18
Vacation Humidity Control	19
Vacation Fresh Air Control	20
SCHEDULES	22
View or Edit Schedule	22
Guided Scheduling	23
Upload My Schedule	25
VACATION	26
REMINDERS	28
OPERATING STATUS	29
Accessories Status	30
Temperature Control Status	30
DISPLAY	31
Temperature Units	31
Backlight Levels	32
Sound Settings	33
Screen Saver Settings	33
Touch Screen Calibration	34

TABLE OF CONTENTS (cont.)

	PAGE
ENERGY TRACKING	34
TIME / DATE	36
Set Time and Date	36
Manually Adjust Time and Date	36
Setup Daylight Savings Time	37
Setup Time Zone	38
Enable Time Synchronization	38
SERVICE	39
Service Information	39
Service Reminder Update	40
Software Update	40
Updating Software Using USB	41
Updating Software Using Wi-Fi	41
Model / Serial Numbers	45
PHOTO UPLOAD	46
HEAT SOURCE (IF APPLICABLE)	47
ZONE NAMES (IF APPLICABLE)	48
Home Automation System Interface (If Applicable)	48
SCREEN LOCK	49
WIRELESS	50
Wi-Fi Diagnostics	58

TABLE OF CONTENTS (cont.)

	PAGE
WEATHER	59
UTILITY DEMAND EVENT RESPONSE SETUP	60
Utility Event	60
Price Response	61
Price Settings	61
Demand Response	62
Demand Settings	63
Response Limits	63
Restore UE Factory Default Settings	64

INTRODUCTION

CONGRATULATIONS! Your decision to choose the Evolution® Connex™ Control puts you in a select group of homeowners who understand the value of precise comfort control and appreciate the simplicity of an easy-to-use, intuitive, control.

Your new Evolution Connex Control offers high quality comfort technology. Please take a few moments to carefully read through this manual. Next set up a comfort profile and schedule that makes sense for your lifestyle; then relax and enjoy the new comfort of your home!

HOME SCREEN

Information Displayed

The information displayed on the home screen will appear when there has been no interaction with the Evolution Connex Control for at least two minutes. The basic information displayed on the Home Screen consists of the current date and time, the room temperature (zone temperature if applicable), the outdoor temperature (if applicable), and current weather condition (Wi-Fi® models only, when properly configured). Connectivity status to the home Wi-Fi network and the MyEvolution Server will also be displayed on the Home Screen for compatible Wi-Fi units (SYSTXBBECW01-A and SYSTXBBECC01-A). Note: You must have Wi-Fi enabled for the indicator to appear.

If you have uploaded a photo to the control (see Pg. 41), it will be displayed until you touch the display. You will then be taken to the Home Screen.

Wi-Fi Connectivity Status



A150238

With the SYSTXBBECW01-A and SYSTXBBECC01-A Evolution Connex Wi-Fi® models, connectivity status to the home Wi-Fi network and MyEvolution Server is displayed in the top right hand corner of the Home Screen.

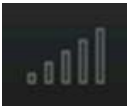
When the Evolution Connex control is connected to the home Wi-Fi network and the MyEvolution Server, the signal strength bars will be displayed in white as depicted in the image above. Connection strength to the home Wi-Fi network will be indicated by the number of solid white bars displayed.



Strong Connection



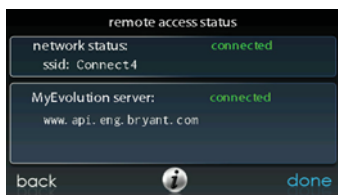
Limited Connection



No Connection

A13259

- Pressing on the Connectivity Status bars from the Home Screen will allow you to view the Remote Access Status screen.



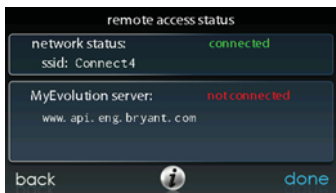
A13266

- NOTE:** If the Evolution Connex control is not connected to the house network, a red “X” will appear over the strength bars. If the Evolution Connex control is connected to the home Wi-Fi network but loses connection to the MyEvolution Server, a triangle will appear over the strength bars as depicted in the image below. Connection strength to the home Wi-Fi network will continue to be displayed by the number of solid bars. If this problem persists, please contact Bryant Customer Relations at 1-800-4284326 for assistance.



A160182

- Pressing on the Connectivity Status bars from the Home Screen will allow you to view the Remote Access Status screen.



A13267

Information Buttons

On the bottom of some screens will be an information icon. By pressing the information icon, a text box will display to show what interactions are available on that particular screen. To close the text box, touch the text box.



A14279

MAIN SCREEN

The main screen is where most interactions will take place. Touch anywhere on the Home screen to arrive at the main screen.

System Mode

- Once in the main screen,
- To access your system mode touch the MODE label located in the upper right of the control.
- The drop-down menu will allow you to choose between AUTO, HEAT, COOL, FAN ONLY and OFF, depending on the equipment installed in your system.
- If OFF is selected your system will not control temperatures, humidity, or fan.
- If AUTO is selected, the Evolution Connex Control automatically switches between heating and cooling to maintain your comfort during transitional seasons.

NOTE: AUTO mode is intended to switch between heating and cooling modes based on temperature demand. A gradual auto transition is the energy-conscious default that will satisfy the majority of customers. Some customers might have significant and simultaneous heating and cooling demands in different zones. To address this need, a special simultaneous heating and cooling demand auto mode could be enabled by the Installer. When the feature is enabled and AUTO mode is selected, the simultaneous heating and cooling demand auto mode will alternate between heating and cooling, depending on demand, every half hour. This may result in higher energy usage but provide the benefit of greater comfort. Your installing contractor is able to enable this feature, if desired. (This feature is only available with zoned systems).

- If **HEAT** is selected then the Evolution Connex Control operates only the heating system.
- If **COOL** is selected then the Evolution Connex Control operates only the cooling system.
- If **FAN ONLY** is selected, then the Evolution Connex Control operates the indoor fan but heating, cooling, humidification or dehumidification will not take place.

Set Day and Time

- To set the day and time for your home screen enter the main screen by touching anywhere on the control.
- Touch the **DAY** and **TIME** label located at the top middle of the screen or access by going through the menu screen (see Pg. 31).
- To set the **HOUR, MINUTE, MONTH, DAY, or YEAR** touch the feature you wish to change.
- Use the Up (▲) and Down (▼) buttons to make the appropriate changes.
- When you have completed all of the settings, touch **SAVE**.
- If you make a mistake you may touch **CANCEL** and begin again.

Adjust Temperature (Temporary Hold)

The Evolution Connex Control allows you to temporarily override your programmed schedule by adjusting the indoor temperature at any time to meet your needs.

Adjusting Comfort Profiles (See Comfort Profiles on Pg. 11)

- To adjust the comfort activity, enter the main screen by touching anywhere on the control.
- Touch the activity/top button under the Touch 'N' Go® feature on the left side of the screen; then select the desired activity of **HOME, AWAY, SLEEP, or WAKE**.

- Use the Up (▲) and Down (▼) buttons to change the time to temporarily hold the desired temperature in 15 minute increments.
- When the correct time interval is displayed, touch **DONE**.
- To return to the scheduled program, touch **HOLD UNTIL**, and then select **PER SCHEDULE**.

Adjusting Heating

- To adjust the heating temperature, enter the main screen by touching anywhere on the control.
- With the system in either **AUTO** or **HEAT** mode, use the Up (▲) and Down (▼) buttons to set the desired temperature.
- On the left hand side of the screen, the comfort profile will switch to manual, and the system will be placed in a temporary hold.
- Use the Up (▲) and Down (▼) buttons to change the time to temporarily hold the desired temperature in 15 minute increments.
- When the correct time interval is displayed, touch **DONE**.
- To return to the scheduled program, touch **HOLD UNTIL**, and then select **PER SCHEDULE**.

Adjusting Cooling

- To adjust the cooling temperature, enter the main screen by touching anywhere on the control.
- With the system in either **AUTO** or **COOL** mode, use the Up (▲) and Down (▼) buttons to set the desired temperature.
- On the left hand side of the screen, the comfort profile will switch to manual, and the system will be placed in a temporary hold.
- Use the Up (▲) and Down (▼) buttons to change the time to temporarily hold the desired temperature in 15 minute increments.
- When the correct time interval is displayed, touch **DONE**.

- To return to the scheduled program, touch **HOLD UNTIL**, and then select **PER SCHEDULE**.

Adjust Temperature (Permanent Hold)

The Evolution Connex Control allows you to permanently override your programmed schedule by adjusting the indoor temperature at any time to meet your needs.

Adjusting Comfort Profiles (See Comfort Profiles on Pg. 11)

- To adjust the comfort activity, enter the main screen by touching anywhere on the control.
- Touch the activity under the Touch 'N' Go™ feature on the left side of the screen; then select the desired activity of **HOME**, **AWAY**, **SLEEP**, or **WAKE**.
- Touch the **HOLD UNTIL** button, then touch **HOLD**.
- To return to the scheduled program touch **HOLD**, and then touch **PER SCHEDULE**.

Adjusting Heating

- To adjust the heating temperature, enter the main screen by touching anywhere on the control.
- With the system in either **AUTO** or **HEAT** mode, use the Up (▲) and Down (▼) buttons to set the desired temperature.
- On the left hand side of the screen, the comfort profile will switch to **MANUAL**.
- Touch the **HOLD UNTIL** button, then touch **HOLD**.
- To return to the scheduled program, touch **HOLD**, and then touch **PER SCHEDULE**.

Adjusting Cooling

- To adjust the cooling temperature, enter the main screen by touching anywhere on the control.
- With the system in either **AUTO** or **COOL** mode, use the Up (▲) and Down (▼) buttons to set the desired temperature.
- On the left hand side of the screen, the comfort profile will switch to **MANUAL**.
- Touch the **HOLD UNTIL** button, then touch **HOLD**.
- To return to the scheduled program, touch **HOLD**, and then touch **PER SCHEDULE**.

NOTE: For Multi-Zone Applications (Temporary and Permanent Hold options)

- For added convenience in a multi-zone application, the Touch 'N' Go™ feature will also allow you select the desired activity of **HOME** or **AWAY** for **ALL ZONES**.



A14287

- Once you have selected the desired activity for **ALL ZONES**, you will have the option to either permanently (**HOLD**) or temporarily (**HOLD UNTIL**) override your programmed schedule.



A14288

- Selecting the **HOLD** option will permanently override your programmed schedule until you **CANCEL ALL ZONES**.
- Selecting the **HOLD UNTIL** option will allow you to temporarily override your programmed schedule.
- Once selected, use the Up (▲) and Down (▼) buttons to change the time in 15 minute increments.
- When the correct time interval is displayed, touch **DONE**.

FEATURES

Adjust Fan Speed

The Features function of Evolution Connex Control allows you to adjust the fan speed during continuous fan operation.

- To adjust the fan speed, enter the main screen by touching anywhere on the control.
- Touch **FEATURES** on the top left of the screen.
- A drop down menu will appear. Touch **FAN** selection.
- Use the Up (▲) and Down (▼) buttons to set the fan to **AUTO**, **LOW**, **MEDIUM** or **HIGH**, then touch **SAVE**. In zoned systems, the activity settings will apply to the selected zone only.
- For zoned systems, the selected fan speed will apply to the zone currently displayed in the **HOME** and **MAIN**.

View Current Humidity Level

The Features function of Evolution Connex Control allows you to view the current humidity level within the conditioned space.

- Enter the main screen by touching anywhere on the control.
- Touch **FEATURES** on the top left of the screen.
- In the drop down menu you will see your measured humidity levels within the conditioned space.

MENU SCREEN

Your menu screen offers more features and control for your Evolution Connex Control. Touch the menu button at the bottom right of the main screen.

COMFORT PROFILES

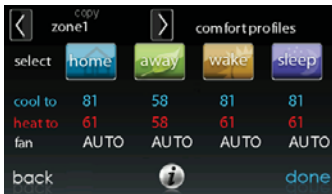
You will need to set the comfort profiles before you attempt to program your new Evolution Connex Control.

- The **COMFORT PROFILES** button includes settings for Temperature and Fan Profiles, Humidity and Fresh Air Profiles, as well as Window Protection Setup.



A14280

- Set your desired heating and cooling temperatures and your fan setting using the **TEMPERATURE AND FAN PROFILES** for each activity. In zoned systems, the activity settings will apply to the selected zone only.



A14241

- For example to change your **HOME** comfort profile, touch the **HOME** icon.
- Use the Up (▲) and Down (▼) buttons to change the fan settings, heating and cooling temperatures. When you are done, press the **DONE** button on the bottom right.
- Do the same thing to change the **WAKE** and **SLEEP** profiles.
- The **AWAY** profile provides an extra feature called **Advanced Smart Setback**. It allows the Evolution® System to dynamically determine the away temperature automatically to save the most amount of money, yet reach your comfort settings when you return home. Advanced Smart Setback may control the temperature somewhere in between the Away temperature limits. This is normal and is intended to prevent excessive energy use.
- Use the Up (▲) and Down (▼) buttons to change the fan settings and temperature settings. The temperature settings are the range in which you choose to keep your home conditioned while you are away. The **Advanced Smart Setback** function will maintain your temperature within this range.
- Set your desired humidity and fresh air (if applicable) using the **HUMIDITY AND FRESH AIR PROFILES** for each activity.



A14242

Home Comfort Profile Humidity Control

- Touch **WHEN AT HOME** to set your humidity settings while the home is occupied to enjoy superior comfort.



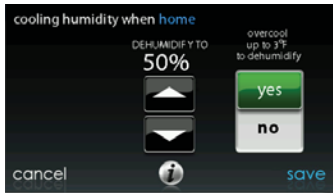
A14243

- If you have a humidifier installed for your system, touch **HEATING HUMIDITY** to set the desired humidity level within the home.
 - You will have the option to turn ON or OFF your humidifier from this screen.



A14244

- Once your Humidifier is turned ON, use the Up (▲) and Down (▼) buttons to set the desired humidity level between 5-45%.
- Press **SAVE** when finished, or **CANCEL** to discard any changes.
- Next, select your desired humidity level during cooling by touching **COOLING HUMIDITY**.



A14245

- Use the Up (▲) and Down (▼) buttons to set the desired dehumidification level between 46-58%.
- Touch **YES** or **NO** for the system to over-cool the conditioned space by up to 3° F to remove as much humidity out of the air as possible. The system will not over-cool past 70F.
- Press **SAVE** when finished, or **CANCEL** to discard any changes.

Home Comfort Profile Fresh Air Control

- If a ventilator is installed in your home, select the amount of fresh air to circulate during heating mode by touching **HEATING FRESH AIR**.

NOTE: This option may not be available with the ERVXXNVA ventilator due to its simplified control design.



A14246

- You will have the option of choosing among **AUTO**, **MANUAL**, or **OFF**.

NOTE: This option may not be available with the ERVXXNVA ventilator due to its simplified control design.

- The **AUTO** setting will allow the user to choose the maximum fresh air that the ventilator will provide. Selections are **Low**, **Medium** or **High**. In Auto, the ventilator will run continuously, unless the outdoor temperature approaches 0F or 100F. At those temperatures, it will turn off.
- The **MANUAL** setting allows you to select the percentage of fresh air to supply to your home. In the **MANUAL** mode, there are several selections available: Off, Low 25%, Low 50%, Low 75%, Low 100%, Medium, and High. The percent values are percent of an hour.

- Use the Up (▲) and Down (▼) buttons to set the desired ventilator speed level.
- Press **SAVE** when finished, or **CANCEL** to discard any changes.
- If applicable, next select the amount of fresh air to circulate during cooling mode by touching Cooling Fresh Air. Again, you will have the option of choosing among AUTO, MANUAL and OFF.
 - Use the Up (▲) and Down (▼) buttons to set the desired ventilator speed level.
 - Press **SAVE** when finished or **CANCEL** to discard any changes.

Away Comfort Profile Humidity Control

You may wish to have different humidity settings when you're away. Press the Menu area on the Main Screen to access the additional menu selections. Select **Comfort Profiles**, then select **Humidity and Fresh Air Profiles** option.



A14247

- Touch **AWAY** to set your humidity settings while you are away from home to save the most amount of energy.
- If you have a humidifier installed for your system, touch **HEATING HUMIDITY** to set the desired humidity level when you are away from home.

- Use the Up (▲) and Down (▼) buttons to set the minimum humidity level between 5%-45%.
- Press **SAVE** when finished, or **CANCEL** to discard any changes.
- To set the desired humidity level during cooling, touch **COOLING HUMIDITY**.
 - Use the Up (▲) and Down (▼) buttons to set the maximum dehumidification level at NONE or between 55-65%.
 - Touch **YES** or **NO** for the system to over-cool the conditioned space by up to 3° F to remove as much humidity out of the air as possible.
 - Press **SAVE** when finished, or **CANCEL** to discard any changes.

Away Comfort Profile Fresh Air Control

You may wish to have different Fresh Air profiles for when you're away. Press the Menu area on the Main Screen to access the additional menu selections. Select **COMFORT PROFILES**, then select the **HUMIDITY AND FRESH AIR PROFILES** option.

- Touch **AWAY** to set your fresh air settings while you are away from home.
- If a ventilator is installed in your home, select the amount of fresh air to circulate during heating mode by touching **HEATING FRESH AIR**.

NOTE: This option may not be available with the ERVXXNVA ventilator due to its simplified control design.

- You will have the option of choosing between **AUTO**, **MANUAL**, or **OFF**.
- The **AUTO** setting will allow the system to choose the fresh air setting in a range of Low, Medium or High, as selected by you.

- The **MANUAL** setting allows you to select the percentage of fresh air to supply to your home. In the **MANUAL** mode, there are several selections available: Off, Low 25%, Low 50%, Low 75%, Low 100%, Medium, and High. The percent values are percent of an hour.
- Use the Up (▲) and Down (▼) buttons to set the desired ventilator speed level.
- Press **SAVE** when finished, or **CANCEL** to discard any changes.
- If applicable, next select the amount of fresh air to circulate during cooling mode by touching Cooling Fresh Air. Again, you will have the option of choosing among **AUTO**, **MANUAL**, or **OFF**.
 - Use the Up (▲) and Down (▼) buttons to set the desired ventilator speed level.
 - Press **SAVE** when finished, or **CANCEL** to discard any changes.

Vacation Comfort Profile Humidity Control

You may wish to have different humidity settings when you're on Vacation. Press the Menu area on the Main Screen to access the additional menu selections. Select **Comfort Profiles**, then select **Humidity and Fresh Air Profiles** option.

- Touch **VACATION** to set your humidity settings while you are on vacation to save the most amount of energy.



A14248

- If you have a humidifier installed for your system, touch **HEATING HUMIDITY** to set the desired humidity level when you are away from home.
 - Use the Up (▲) and Down (▼) buttons to set the minimum humidity level between 5%-45%.
 - Press **SAVE** when finished, or **CANCEL** to discard any changes.
- To set the desired humidity level during cooling, touch **COOLING HUMIDITY**.
 - Use the Up (▲) and Down (▼) buttons to set the maximum dehumidification level at NONE or between 55-65%.
 - Touch **YES** or **NO** for the system to over-cool the conditioned space by up to 3° F to remove as much humidity out of the air as possible.
 - Press **SAVE** when finished, or **CANCEL** to discard any changes.

Vacation Comfort Profile Fresh Air Control

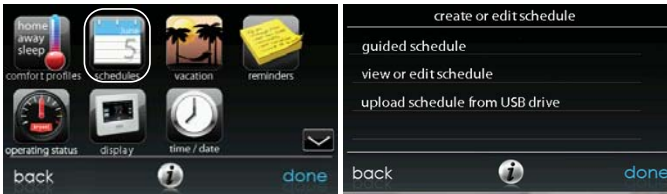
- If a ventilator is installed in your home, select the amount of fresh air to circulate during heating mode by touching **HEATING FRESH AIR**.
- You will have the option of choosing between **AUTO**, **MANUAL**, or **OFF**.

NOTE: This option may not be available with the ERVXXNVA ventilator due to its simplified control design.

- The **AUTO** setting will allow the user to choose the maximum fresh air that the ventilator will provide. Selections are **Low**, **Medium** or **High**.
- The **MANUAL** setting allows you to select the percentage of fresh air to supply to your home.
- Use the Up (▲) and Down (▼) buttons to set the desired ventilator speed level.
- Press **SAVE** when finished, or **CANCEL** to discard any changes.
- If applicable, select the amount of fresh air to circulate during cooling mode by touching **COOLING FRESH AIR**. Again, you will have the option of choosing among **AUTO**, **MANUAL** and **OFF**.
 - Use the Up (▲) and Down (▼) buttons to set the desired ventilator speed level.
 - Press **SAVE** when finished, or **CANCEL** to discard any changes.

SCHEDULES

Program your Evolution Connex Control by selecting the **SCHEDULES** icon. You may select to use the guided scheduling feature, view or edit your schedule or upload your schedule from a USB drive.



A14281

View or Edit Schedule

- To set a specific day use the Left (◀) and Right (▶) buttons beside the day names.
 - If you wish to copy this schedule to other days, touch **COPY** above the day.
 - Select the days you wish to have the same schedule, then touch **COPY**.
- To select the time the activity starts, touch the **TIME** icons. Use the Up (▲) and Down (▼) buttons to set the desired start time.
- If you want to delete a time period, touch the **TIME** icon, then touch **DELETE**.
- To change the desired activity touch the **ACTIVITY** icon then select the desired activity (**WAKE**, **HOME**, **AWAY** or **SLEEP** buttons). When finished touch **SAVE**.

- *For Zoned Systems*
 - To set a specific room, use the Left (◀) and Right (▶) buttons beside the zone name.
 - If you wish to copy this schedule to a different zone, touch **COPY** above the zone name.
 - Select the zones you wish to have the same schedule, then press **COPY**.

Guided Scheduling

The Guided Scheduling feature will prompt you with simple questions to help set a schedule that meets your desired comfort level and lifestyle.

If you are satisfied with your comfort settings, proceed to the next screen.

If you are not, go through the process outlined under **Comfort Profiles** (Pg. 11).

1. If you have a zoning system, the next question will prompt you to pick the zone you wish to schedule.
 - Select the desired zone to program, then touch **NEXT**.
 - **If you do not have a zoned system, the control will skip this question.**
2. The next question will prompt you to select the days you wish to schedule.
 - You may select individual days, all days or weekdays by touching their respective buttons.
 - After you have selected the desired days, touch **NEXT** to continue.
3. The next question will ask what time you wake up on the scheduled days.
 - Use the Up (▲) and Down (▼) buttons to set the time you wake up.
 - After you have selected the correct time, touch **NEXT** to continue.
4. The next question will ask if someone is home all day.
 - Simply touch **YES** or **NO** to answer this question.

- If you select **NO**, the next question will ask what time you leave the home.
 - Use the Up (▲) and Down (▼) buttons to set the time you leave.
 - After you have selected the correct time, touch **NEXT** to continue.
 - You will then be asked what time you will return to your home.
 - Use the Up (▲) and Down (▼) buttons to set the time you return home.
 - After you have selected the correct time, touch **NEXT** to continue.
5. If you select **YES** or have completed the previous steps, the next question will ask if you want different sleep settings.
- If you select **YES**, the next question will ask what time you go to sleep.
 - Use the Up (▲) and Down (▼) buttons to set the time you go to sleep.
 - After you have selected the correct time, touch **NEXT** to continue.
6. If you select **NO** or have completed the previous steps, you will be shown a screen that the scheduling process is complete for the selected days and zones (if applicable).
- If you have completed the schedule, touch **SAVE** continue.
 - If you touch **CANCEL**, it will prompt you back to step 5.
7. If you touched **SAVE** in step 6, you will be asked if you want to schedule more days.
- Simply touch **YES** or **NO** to answer this question.
 - If you select **YES**, you will return to step 2 and follow the process.
8. If you select **NO**, the screen control will show you the newly created schedule.
- If you have a zoning system, you will be asked if you want to schedule another zone.

- If you select **YES**, you will return to step 2 and follow the process.
- If you select **NO**, you will see the newly created schedule.

Upload My Schedule

The **Upload my Schedule** feature will allow you to update your schedules from a PC or MAC computer, load those schedules onto a USB memory device, and upload the schedules into the Evolution Connex Control.

- To download the MyEvolution application for your computer, sign into the MyEvolution website at www.MyEvolutionConnex.Bryant.com.
 - Click on the Downloads tab.
 - Click on the Adobe Air download link and install Adobe Air onto your computer.
 - Once Adobe Air is installed on your computer, download the MyEvolution Desktop application.
 - The MyEvolution Desktop application provides a virtual Evolution Connex Control for you to use on your computer. You can perform all of the programming steps on your computer that you can perform on the Evolution Connex Control.
- Once the schedules are complete, insert a USB memory device into your computer. Add a new folder to the USB device labeled User. Make sure that this folder is at the top of the folder chain in the USB device, this is also called the “root directory”.
 - Select the **SAVE SCHEDULE to USB Drive** option on the computer Desktop application Schedules menu. Read the directions and then select **Export**.
 - Save the schedule file in the User folder of the USB device.
 - Once that is complete, safely remove the USB device from the computer.

- Install the USB device into the USB port on the bottom of the of the Evolution Connex Control.
- On the Evolution Connex Control, select **SCHEDULES** from the Menu screen, then select the **Upload Schedule from USB Drive** option.
- If the folder and file have been placed correctly on the USB device, you will be asked if you wish to upload the schedule.
 - Select **YES**.
 - When successful, press **NEXT**.

VACATION

Touch the **VACATION** icon in order to set a prolonged vacation schedule.



A12489

- Touch **PLAN VACATION** to begin your vacation schedule.
- The system automatically selects to start vacation at the current time.
- Use the Up (▲) and Down (▼) buttons to set the time and date of when your vacation begins; then touch **NEXT**. The control won't allow you to select a vacation start date/time earlier than the current date/time.
- Use the Up (▲) and Down (▼) buttons to set the fan speed and the temperature range you wish to keep your house; then touch **NEXT**.

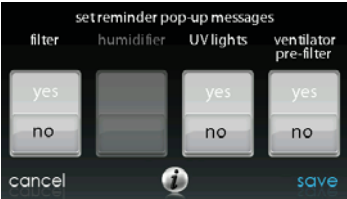
- Use the Up (▲) and Down (▼) buttons to set the time and date of when plan to return from your vacation; then touch **NEXT**. The system won't allow you to select a vacation end time that would result in a vacation duration of less than one day.
- Review your vacation schedule to make sure it is accurate. If it is correct, touch **SAVE** to complete your vacation schedule.



A12110

REMINDERS

With the Evolution Connex Control, there are accessory messages to remind you when it is time for maintenance. Select the **REMINDERS** icon from the menu screen.



A12496

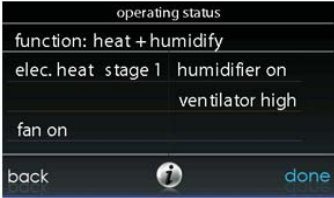
- You have the option of choosing a pop-up reminder for your air filter, humidifier, UV lights, or ventilator pre-filter.

NOTE: This option may not be available with the ERVXXNVA ventilator due to its simplified control design.

- To enable a reminder, touch **YES**.
- After you have selected your desired reminders, touch **SAVE**.

OPERATING STATUS

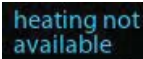
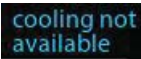
The OPERATING STATUS menu gives a quick look at the status of your Evolution® Heating and Cooling System.



A12504

When simultaneous heat/cool demand is enabled, this screen will display information message at this location.

This includes the following messages:



A160190

Within the operating status, you can view which function your system is performing, and at which stage the heating or cooling equipment is operating. A message stating, “System Check in Progress” means that the system is performing its normal 1 p.m. Filter check. This also happens any time the system mode is changed from Off to Auto, Heat, Cool, or Fan Only. When you are finished looking at the operating status, press the **DONE** button to return to the previous menu.

Accessories Status

Within the accessory status, you can view how much of each accessory has been consumed, and reset the counter for each accessory.

- To reset the counter for your installed accessory, touch the **RESET** button, then press **SAVE**.
- To return to the previous menu, press **CANCEL**.



A12108

Temperature Control Status

The Temperature Control Status allows you to take a quick look at the actual temperatures, and temperature set points for each zone in your system.

- When you are done looking at your zone status, press **DONE**.

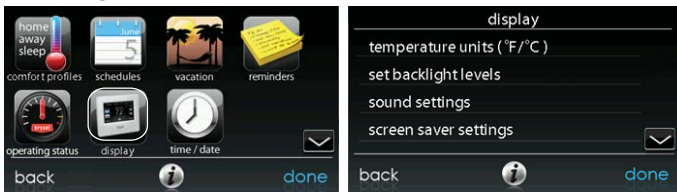
The system will indicate which mode is running by showing flashing arrows towards either the heating or cooling set point. For a zoned system, the system shows flashing arrows for each zone currently being conditioned. If the system is preparing for the next program period, an indicator will be displayed to show that the system is moving the temperature toward the next programmed set point. In zoned systems with the simultaneous heat cool demand auto mode active, the system will show a single arrow towards either the heating or cooling set point for each zone pending conditioning in the other mode.

temperature control status			
ZONE NAME	HEAT TO	ACTUAL	COOL TO
living room	74	86	> 77
ZONE 2	68	96	> 76
ZONE 3	67	85	> 70
ZONE 4	68	78	> 76
ZONE 5	80	<<< 76	83
ZONE 6	68	<<< 60	76
ZONE 7	86	<<< 72	89
ZONE 8	68	<<< 66	76
back			done

A160187

DISPLAY

The following display preferences can be adjusted for Evolution Connex Control, **Temperature Units** (°F or °C), **Backlight Levels**, **Sound Settings** and **Screen Saver Settings**.



A14284

Temperature Units

Select the desired temperature units, either °F for Fahrenheit, or °C for Celsius and touch SAVE. Temperatures will be displayed with half-degree resolution for Celsius, or full degree resolution for Fahrenheit.

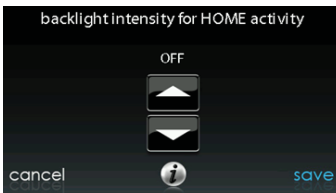
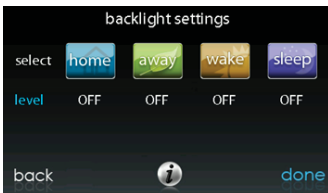


A14257

Backlight Levels

- Backlight levels are programmable for each Comfort Profile setting **HOME**, **AWAY**, **WAKE**, or **SLEEP**.
- Use the Up (▲) and Down (▼) buttons to set/change the brightness of back lighting.
 - Brightness levels include OFF or 1-10.

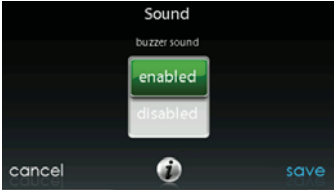
NOTE: After 30 seconds of inactivity on the touch screen, the backlight level **will** be set back to the current selected level which may be OFF.



A14258

Sound Settings

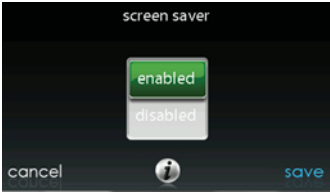
To allow a buzzer to sound on each touch of the screen, touch **ENABLE**; otherwise, touch **DISABLE**. The “tick”sound that occurs when you touch the screen cannot be disabled.



A14259

Screen Saver Settings

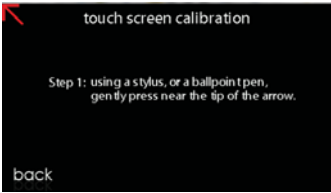
To allow a photo to act as a screen saver, touch **ENABLE**; otherwise, touch **DISABLE**.



A14260

Touch Screen Calibration

If you experience any problems with touch position accuracy, Touch Screen Calibration can be performed by following the on-screen prompts.



A14261

ENERGY TRACKING

The Evolution® Connex™ Control has the ability to monitor and estimate the energy consumption of certain models of your Evolution System. For systems where energy tracking is not available, the menu icon will be shown in gray color, and this section does not apply.



A150239

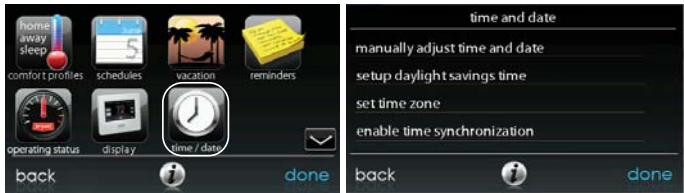
- Touch **VIEW ENERGY USAGE** to view the estimated energy consumption in daily, monthly or annual time intervals. You can view energy consumption in units (kWh for electric and selected unit for gas heat), or in dollars.
- If a gas furnace is installed, you can **SELECT FUEL TYPE** (natural gas or propane), and also **SELECT FUEL DISPLAY UNITS**.
- Touch **ENTER ENERGY PRICES** to enter the current electric and gas utility rates.
 - Use the Up (▲) and Down (▼) buttons to set the costs per kWh and cost per Therm or your selected unit.
 - Once the correct pricing is entered, press **SAVE**.



A12113

TIME / DATE

The **TIME/DATE** icon allows you to set the time and date for your Evolution Connex Control.



A14282

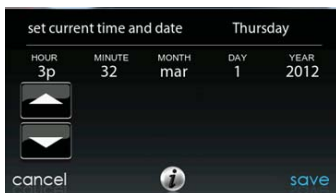
Set Time and Date

The time and date can either be set manually or can be synchronized with the web server (only for Wi-Fi enabled units). From the main screen, touch MENU, on the bottom of the control. The **TIME/DATE** icon will bring up the time and date menu.

Manually Adjust Time and Date

Select manually adjust time and date and follow these steps:

- To set the **HO**UR, **MIN**UTE, **MON**TH, **DA**Y, or **YE**AR, touch the feature you wish to change.

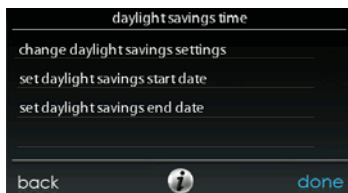


A14251

- Use the Up (▲) and Down (▼) buttons to make the appropriate changes.
- When you have completed all of the settings touch **SAVE**.

Setup Daylight Savings Time

You can program your Evolution Connex Control to automatically adjust for daylight saving time. From this screen, you can also choose to override the preprogrammed start and end dates for daylight saving.



A14252

Setup Time Zone

The time zone can be selected by selecting the setup time zone from the menu. Then select the time zone for the location. Time zones for both US and Canada are included.



A14217

Enable Time Synchronization

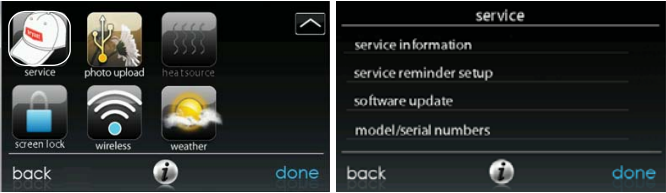
For systems with Wi-Fi® capability, after setting up the time zone, the time synchronization can then be done. Both must be done in order to enable time synchronization.



A14253

SERVICE

Selecting the **SERVICE** icon from the menu screen will allow you to view service contact information, set-up or modify service reminders and update the software for your wall control.



A14283

Service Information

Your dealer information is easily accessible and may already be pre-programmed in your Control by your dealer. Select the SERVICE INFORMATION option.

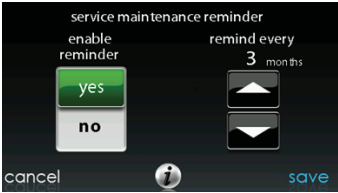
- Either your dealer’s contact information or the Bryant Service number, 1-800-428-4326, will appear.
- This information will also appear if your system requires service.



A13265

Service Reminder Update

This option will allow you to setup routine service reminders. Once the reminder option is enabled, you can select the frequency of these reminders (3 to 18 months).



A13251

Software Update

Bryant will periodically issue software updates for the Evolution Connex control. For the Wi-Fi models, SYSTXBBECC01-A and SYSTXBBECW01-A, updates will download automatically through your Wi-Fi connection, allowing you to install them at your convenience. For non-Wi-Fi a model, SYSTXBBECN01-A, software updates will be made available on the MyEvolution website for download to a USB.



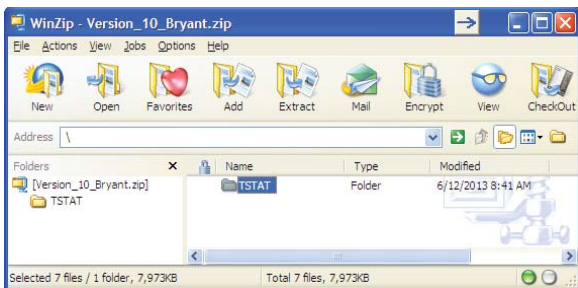
A13252

Updating Software Using USB

- When software updates are available, they will be posted to on the downloads page of the MyEvolution website,
<https://www.MyEvolutionConnex.Bryant.com/Evolution/Downloads>.

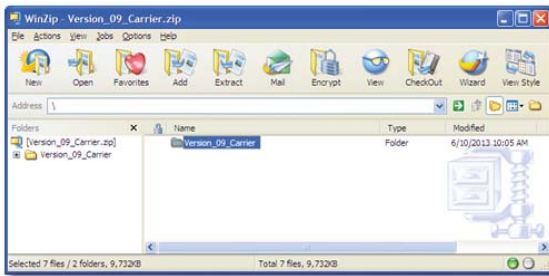
NOTE: You will obtain best results using a USB drive that is 2GB, 4GB or 8GB in size. Your flash drive must be formatted as FAT32.

- From the downloads page on the MyEvolution website, click on the link under the Download Latest Software
- Read the End User License Agreement (EULA).
- At the bottom of the EULA, choose “Yes” if you accept the agreement.
 - NOTE:** If you do not wish to accept the agreement, you will not be able to download the software update.
- Use the Download link provided in the EULA document to download the software update package.



A13273

- Highlight the TSTAT folder in the WinZip window by clicking on the folder icon ONCE to highlight the proper folder to be downloaded to the USB drive. Then click on **EXTRACT**.
- Choose the USB memory device root directory as the location to extract the folder from the zip file. When the download is complete, the TSTAT folder will appear on the root directory of the USB device. Verify that the files, including the “.hex” file, have been extracted into the TSTAT folder of the USB drive.



A13254

- Plug the USB into the bottom of the Evolution Connex wall control and click on the **UPDATE SOFTWARE USING USB**.
- Press Yes to continue with the software upgrade. The upload and installation will take several minutes.
- When the software upgrade is complete, a “successful” message will appear. Click **DONE**.

- The Evolution Connex control will perform a restart after the **DONE** button is pressed. Once the Evolution Connex control has successfully restarted, the USB device may be removed.
- This completes the software upgrade process.

Updating Software Using Wi-Fi®

(SYSTXBBECC01-A and SYSTXBBECW01-A models only)

When software updates are available, this reminder message will be displayed on the home screen of the Wi-Fi® models, only.



A13353

Touch anywhere inside the software update reminder message to install the latest software or customize your reminder messages for software updates.

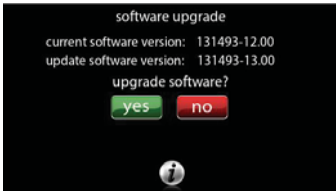


A150194

Selecting **YES** will initiate the software update process. Your Evolution Connex control will reboot in order to complete the software update process. All of your previously stored information and settings will be maintained.

NOTE: Select **DETAILS** to view the release notes associated with the software to be downloaded.

Selecting **NO** will allow to set-up a reminder for a later time or you can disable the reminder feature for this particular software update.



A150204

Model / Serial Numbers

This screen will allow you to access the model numbers and serial numbers for the installed equipment.



A14255

PHOTO UPLOAD

With the Evolution Connex Control, you can upload a personal photo to act as a screen saver. Select the **PHOTO UPDATE** icon from the menu screen.

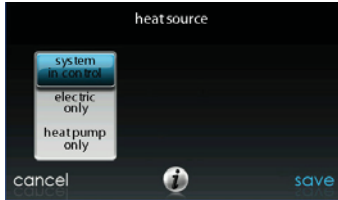


A12495

- Use the PC application to upload the photo on the control and save it to a standard USB drive.
Go to <https://www.MyEvolutionConnex.Bryant.com> and select the Evolution® Connex™ Control and click the downloads tab to download the MyEvolution computer Desktop application for either PC or MAC. Install the software on your computer, then go to the Menu and select Photo Export. Follow the instructions on-screen in the PC application.
- Touch the **upload photo** icon on the menu screen on the Evolution Connex Control.
- Place the USB drive into the USB port on the bottom of the Evolution Connex Control when prompted.
- The control will automatically upload the photo.
- Once complete, you will receive a confirmation that your photo is loaded.
- After you have selected your desired reminders, touch **SAVE**.

HEAT SOURCE (IF APPLICABLE)

With the Evolution Connex Control, you can select the desired heat source of your system, if your system is equipped as a Hybrid Heat® System. Select the **HEAT SOURCE** icon from the menu screen.



A13116

NOTE: Options available on this screen will correspond to the equipment attached.

- The default is for the system to control the heat source.
- To have only the furnace control, select **GAS ONLY**.
- To have only the heat pump, select **HEAT PUMP ONLY**.
- To have only electric, select **ELECTRIC ONLY**.
- When you have made the appropriate selection, touch **SAVE**.

ZONE NAMES (IF APPLICABLE)

With the Evolution Connex Control, you have the ability to customize zone names. Select the **ZONE NAMES** icon from the menu screen.



A12499

- Touch the zone in which you choose to change the name.
- Choose between selecting a **COMMON NAME** or **CREATE A CUSTOM NAME**.
 - If you choose select a common name, touch the name you want for that particular zone.
 - If you choose create a custom name, use the (⌫ or clear) button to erase the existing zone name. Then, use the on-screen keyboard to type in the name you want for that particular zone.

Home Automation System Interface (If Applicable)

The Evolution Connex Control can connect to a variety of home automation systems. Note that not all Home Automation systems may be compatible. Your dealer can access information for interfaces to home automation systems. See the Evolution Connex Control Installation Instructions for more details.

Your dealer can work with your home automation supplier to see if the systems are compatible, or to see if the home automation supplier can make them compatible.

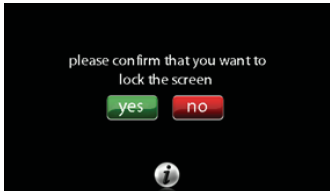
SCREEN LOCK

The screen may be locked by selecting the **SCREEN LOCK** icon from the menu screen.



A13263

- A message will pop up asking if you want to proceed with the screen lock. Selecting **Yes** will lock the screen and take you back to the home screen.



A13247

- To unlock the screen, press and hold **UNLOCK** in the bottom left hand corner for 10 seconds.



A150237

- The screen will change and the control will then be accessible. If the screen is to be locked again, return to the menu, select the screen lock and touch **YES**.

WIRELESS

With the appropriate models, the Evolution[®] Connex[™] Control can connect to the in home Wi-Fi[®] network to connect the Evolution System to the Internet. The model SYSTXBECW01-A wall control comes bundled with an Evolution Wireless Access Point. This establishes an independent Evolution System Wi-Fi network. The model SYSTXBEECC01-A is intended to connect to an existing home Wi-Fi network, or to be added to an existing Evolution System Wi-Fi network. If the in-home Wi-Fi is found to be incompatible with SYSTXBEECC01-A, an Evolution Wireless Access Point (SYSTXXXGWR01) or any other compatible wireless router can be installed to establish Wi-Fi connectivity.

Please call 1-800-428-4326 for support with Wi-Fi set-up and connection to the MyEvolution Server.

The ability to remotely access and adjust the settings of the Evolution[®] Connex[™] Control with the MyEvolution web and mobile applications is dependent on the compatibility of the user's computer/network or mobile device, the Evolution Connex Control, and/or the MyEvolution web server with, and the availability of,

the user's Internet service provider or mobile device carrier service. Bryant Heating & Cooling Systems makes no representations or warranties, express or implied, including, to the extent permitted by applicable law, any implied warranty of merchantability or fitness for a particular purpose or use, about the compatibility of the user's computer/network, or mobile device, with the Evolution Connex Control, and/or the MyEvolution web server, with, and the availability of, the user's Internet service provider or mobile device carrier service, or that the ability to remotely access and adjust the settings of the Evolution Connex Control will not be negatively affected by the network-related modifications, upgrades, or similar activity of the user's Internet service provider or mobile device carrier service.

SYSTXBBECC01-A Models

To establish Wi-Fi connectivity to the Evolution Connex Control using the in-home router or wireless access point the wireless access point SSID and password/passkey must be known for set-up.



A150211

- Select the **WIRELESS** from the menu screen
- Make sure the Wi-Fi connection is enabled, by touching **ENABLED**.
- Touch **SETUP A WI-FI CONNECTION** to begin the process.
- Next, touch **SCAN FOR AVAILABLE ACCESS POINTS**.



A13235

- On the next screen look for the SSID of the router/access point. After being selected, it will be outlined in faint blue and will be indicated by a check mark. Then select **NEXT**.



A150175

- The selected network will show. Choose an appropriate Wi-Fi security. Usually auto-detect will correctly identify the type of security used. If the network has no security it will show as on the left, but a secured network will prompt for the Wi-Fi security key.



A150191

- If a Wi-Fi security key is shown as on the right hand picture above then select the white bar and enter the security key, then select NEXT.
- Touch in the security key area, and the keyboard will appear.
 - Use the on screen keyboard to enter the Wi-Fi security key, then touch NEXT.
- The control will inform you if the connection is successful. If so, touch **DONE**.
 - If the connection is unsuccessful, verify that the proper information has been entered before you touch RETRY. The control will go through the process again.



A13238

- After the control has connected to the network, go to www.MyEvolutionConnex.Bryant.com to register the unit and begin remote access. This requires the MAC address and serial number of the Evolution® Connex™ Wall Control. To find the serial number and MAC address of the Evolution® Connex™ Wall Control, click on Menu, Down Arrow, Wireless and View MyEvolution Info. This screen will provide the information needed on the MyEvolution website during registration.
- When the connection to the MyEvolution web server has been established, the status screen will show Connected for both Wi-Fi and the server.



A13239

SYSTXBBECW01-A Models

To establish Wi-Fi connectivity to the Evolution Connex Control through the Evolution System Wireless Access Point (TP-LINK® Device), connect the WAN (BLUE port) connection of TP-LINK Wireless Access Point to the home's existing router LAN port using the provided Ethernet cable. The LAN ports on the back of the TP-LINK Wireless Access Point should not be used for other devices. The Evolution (TP-LINK) Wireless Access Point should only be used for connection of the Evolution Connex Control(s) and is not intended to be used wired or wirelessly with any other devices.



A150211

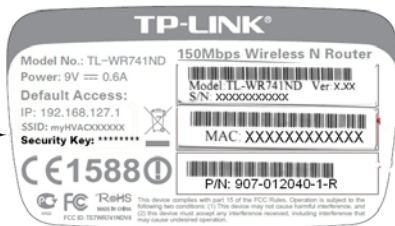
- Select the **WIRELESS** from the menu screen
- Make sure the Wi-Fi connection is enabled, by touching **ENABLED**.
- Touch **SETUP A WI-FI CONNECTION** to begin the process.
- Next, touch **SCAN FOR AVAILABLE ACCESS POINTS**.



A12115

- Select the **myHVACxxxxxx** connection from the list, then touch **NEXT** (myHVAC is followed by the last 6 digits of your Wireless Access Point's MAC address; see the label on the bottom of the TP-LINK Wireless Access Point).

SSID & Security Key →



A12357

- You may have to use the down arrow to scan to the next screen to find “myHVACxxxxxx”.



A150175

- Use the on screen keyboard to enter the Wi-Fi security key, then touch **NEXT**.
 - Touch in the security key area, and the keyboard will appear.
 - The security key can be found on the back of the TP-LINK Wireless Access Point.



A150192

- The control will inform you if the connection is successful. If so, touch **DONE**.
 - If the connection is unsuccessful, verify that the proper information has been entered before you touch **RETRY**. The control will go through the process again.



A12118

- After your control has connected to the network, go to www.MyEvolutionConnex.Bryant.com to register the unit and begin remote access. This requires the MAC address and serial number of the Evolution® Connex™ Wall Control, NOT the Wireless Access Point. To find the serial number and MAC address of the Evolution Connex Wall Control, click on Menu, Down Arrow, Wireless and MyEvolution® Reg-

istration Info. This screen will provide the information needed on the MyEvolution® website during registration.

- See the Control Registration instructions included in the package for more information.
- When the connection to the MyEvolution web server has been established, the status screen will show Connected for both Wi-Fi and the server.

TP-LINK is a trademark of TP-LINK Technologies Co., Ltd.

Wi-Fi® Diagnostics

Wi-Fi diagnostic information is available for troubleshooting purposes. It is located in the Advanced Settings menu. Information from this screen may be requested during a customer service call.



A13243

WEATHER

When the Evolution® Connex™ Control is connected to a Wi-Fi® network, use the **WEATHER** icon to retrieve the weather forecast based your postal code.



A160184

- To enter your postal code, touch **CHANGE CURRENT LOCATION**.
- Next, select your country (United States, Canada, or Mexico).
- To enter your postal code, touch in the blank area; then enter your postal code using the on screen keyboard. Note that you may select a postal code other than where the system is located, if another postal code has a more relevant weather forecast for your area.
- After you have entered your postal code, touch **SAVE**.

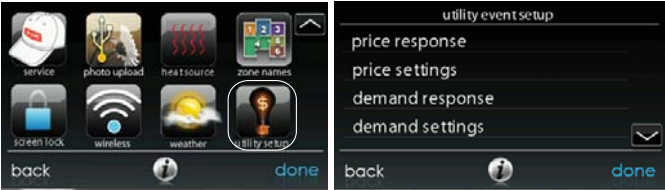


A160185

UTILITY DEMAND EVENT RESPONSE SETUP

This section is only applicable if your utility company is running a demand response or price response program in which you have agreed to participate. Contact your local electrical utility company for information about programs in your area.

NOTE: If you wish to participate with your electrical utility company, a service person or Utility representative must enable the utility event interface.



A14285

Utility Event

Your utility may send price response or demand response events to your Wi-Fi enabled Evolution Connex Control. When a price response or demand response event is received, your temperature set points will be automatically adjusted depending on the utility event setup settings that you have selected.

When a utility event is in progress...

- The temperature set points will be automatically adjusted depending on the utility event setup. The adjusted heating and cooling temperatures will be displayed in green on the main screen along with a “utility event” message.
- A utility event icon will appear on the home screen. Pressing the icon or manually adjusting the heating and cooling set points will display the

type of event, the adjustment to the heating and cooling set points, the time the event will end, an accept button, and an override button.

- Pressing the accept button will accept the adjustments made to the heating and cooling set points.
- Pressing the override button will change the heating and cooling set points back to their original values prior to the event.

Price Response

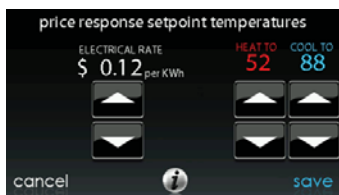
Price response determines how the heating and cooling set points will be adjusted during a pricing event with two choices - offsets or absolute temperature. When offsets are selected, the heating and cooling set points are adjusted by the number of degrees selected. When absolute temperature is selected, the heating and cooling set points are adjusted to heating and cooling temperatures.



A14263

Price Settings

When the electric rate from the utility company meets or exceeds the “ELECTRICAL RATE”, the heating and cooling set points will be adjusted according to the absolute temperature or offset shown here. If the set point at the time of the event is more favorable (uses less energy) than what you have programmed, the Evolution Connex Control Thermostat will use the more favorable set point for the duration of the event. Unless otherwise indicated, all settings temperatures will be shown in Fahrenheit degrees.



A14264

Demand Response

Demand response determines how the heating and cooling set points will be adjusted during a demand response event with two choices - offsets or absolute temperature. When offsets are selected, the heating and cooling set points are adjusted by the number of degrees selected. When absolute temperature is selected, the heating and cooling set points are adjusted to heating and cooling temperatures.



A14265

Demand Settings

When a demand response is received from the utility company, the heating and cooling set points will be adjusted according to the absolute temperature or offset shown here. If the set point at the time of the event is more favorable (uses less energy) than what you have programmed, the Evolution Connex Control Thermostat will use the more favorable set point for the duration of the event.



A14266

Response Limits

Response limits are minimum heating and maximum cooling temperatures allowed during a utility event. These limits are not exceeded and are intended to protect the occupant premises from extreme temperatures that might otherwise be imposed by a utility event. Unless otherwise indicated, all settings temperatures will be shown in Fahrenheit degrees.



A14267

Restore UE Factory Default Settings

Restore UE (Utility Event) factory default settings will restore all utility event set points and price settings to their original factory default values.



A14268

NOTES



TP-LINK is a registered trademark of TP-LINK TECHNOLOGIES CO., LTD

Wi-Fi® is a registered trademark of Wi-Fi Alliance Corporation.

Version 14 Software Release

©2016 Bryant Heating & Cooling Systems 7310 W. Morris St. Indianapolis, IN 46231

Edition Date: 10/16

Catalog No: OMSYSTXBEC-07 / 997-011290-27-R

Manufacturer reserves the right to change, at any time, specifications and designs without notice and without obligations.

Replaces: OMSYSTXBEC-06