

High Wall Heat Pump System

Indoor Model: 40MKQB28B--3

Outdoor Model: 25HHA430A003/224ANS030000

Submittal Data

Job Data: _____ Location: _____

Buyer: _____ Buyer P.O. #: _____ Carrier #: _____

Unit Number: _____ Model Number: _____

Performance Data Certified By: _____ Date: _____

STANDARD FEATURES



- Small footprint
- Fixed Speed Compressor
- WeatherArmor Ultra™ cabinet
- Low ambient operation to -20°F (with low ambient accessory)
- 200 Ft. line lengths
- Modes: Cool, Heat, Dry, Fan, Auto
- Sleep mode
- Dehumidification mode
- Timer
- Louver Control (Fixed or Swing)
- Follow me
- 46F Heating Mode (Heating Setback)
- Quiet operation

CONTROL FEATURES

- Wireless remote control (standard)

For specific information on indoor or outdoor unit see Product Data

(Unless otherwise indicated, data applies to both indoor and outdoor models)

System	Size		28
	Outdoor Model		25HHA430A003 224ANS030000
	Indoor Model		40MKQB28B--3
Performance	Cooling Rated Capacity	Btu/h	27,600
	SEER		14.0
	EER		12.2
	Heating Rated Capacity	Btu/h	27,800
	HSPF		8.2
	COP	W/W	3.72
Controls	Wireless Remote Controller (°F/°C)		Standard
	Wired Remote Controller (°F/°C)		N/A
Operating Range	Cooling Outdoor DB Min - Max	°F	55~125 (-20°F w / Low-Ambient Kit)
	Cooling Indoor DB Min -Max	°F	64~90
	Heating Outdoor DB Min -Max	°F	17~75
	Heating Indoor DB Min -Max	°F	32~81
Piping	Total Piping Length	Ft.	200'
	Drop (OD above ID)	Ft.	200'
	Lift (OD below ID)	Ft.	65'
	Outdoor Pipe Connection Size - Liquid	In.	3/8"
	Outdoor Pipe Connection Size - Suction	In.	3/4"
	Indoor Pipe Connection Size - Liquid	In.	3/8"
	Indoor Pipe Connection Size - Suction	In.	3/4"

Electrical	Voltage, Phase, Cycle	V/Ph/Hz	208/230-1-60
	Power Supply	Indoor and outdoor units have dedicated power supply	
	MCA (Outdoor)	A.	17.2
	MOCP - Fuse Rating (Outdoor)	A.	30
	MCA (Indoor)	A.	1
	MOCP - Fuse Rating (Indoor)	A.	15
Outdoor	Unit Width	In.	44.5
	Unit Height	In.	37.1
	Unit Depth	In.	17.1
	Net Weight	Lbs.	196.0
	Airflow	CFM	2615
Indoor	Unit Width	In.	57.1
	Unit Height	In.	13.4
	Unit Depth	In.	10.4
	Net Weight	Lbs.	55.1
	Number of Fan Speeds		4
	Airflow (lowest to highest)	CFM	525/685/834/847
	Sound Pressure (lowest to highest)	dB(A)	46/48/52/53
	Air throw Data	Ft.	25

Accessories

- ☐ Controls Kit (Required, sold separately)
- ☐ Condensate Pump
- ☐ Crankcase Heater

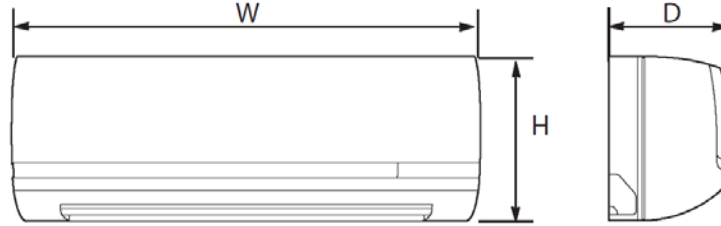
- ☐ Low Ambient Kit
- ☐ Isolation Relay Kit
- ☐ Hard Start Kit
- ☐ Wind Baffle

- ☐ Wall Mounting Kit
- ☐ Liquid Line Solenoid Kit

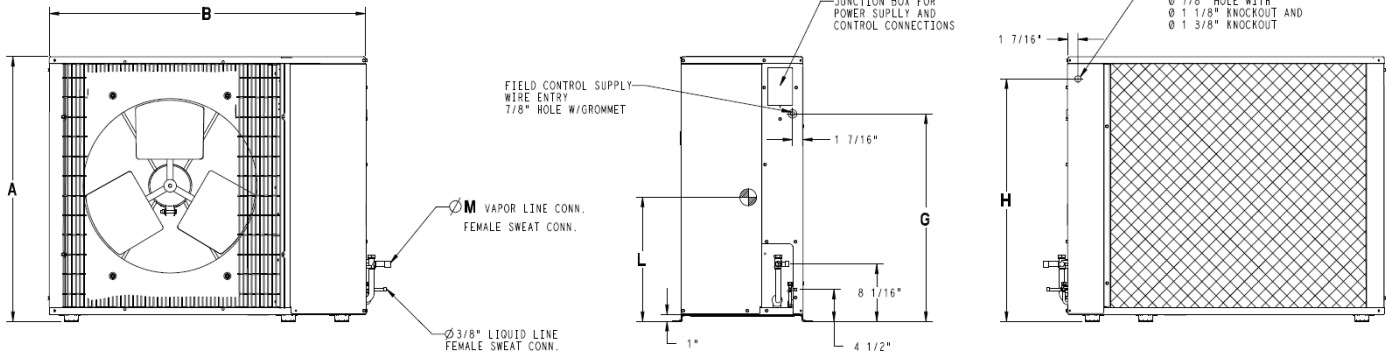
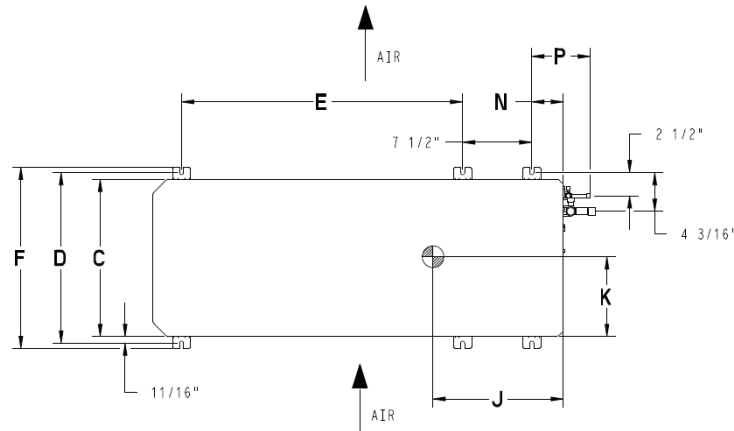
Construction View

Indoor Unit 40MKQB28B--3

Outdoor Unit 25HHA430A003/224ANS030000



Unit Size	Height (H) in. (mm)	Width (W) in. (mm)	Depth (D) in. (mm)	Operating Weight lb (kg)
28	13.4 (343)	57.1 (1450)	10.4 (265)	55.1 (25.0)



Unit Size	A	B	C	D	E	F	G	H	J	K	L	M	N	P	Operating Weight lb (kg)
30	37.13 (943.1)	44.50 (1130)	17.06 (433)	18.87 (479)	30.50 (774)	19.63 (498)	29.13 (485)	34.06 (865)	13.68 (347)	8.13 (206)	15.94 (404)	.94 (13)	3.37 (85)	6.37 (161)	184 (83)

