

Underceiling Heat Pump System

Indoor Model: 40MKQB36F--3

Outdoor Model: 25HHA436A003/224ANS036000

Submittal Data

Job Data: _____ Location: _____

Buyer: _____ Buyer P.O. #: _____ Carrier #: _____

Unit Number: _____ Model Number: _____

Performance Data Certified By: _____ Date: _____

STANDARD FEATURES

- **Convertible: Floor Console – Underceiling**
- Cost Competitive
- Small footprint
- Fixed Speed Compressor
- WeatherArmor Ultra™ cabinet
- **Low ambient operation to -20°F (with low ambient accessory)**
- 200 Ft. line lengths
- Modes: Cool, Heat, Dry, Fan, Auto
- Sleep mode
- Dehumidification mode
- Timer
- Louver Control (Fixed or Swing)
- Follow me
- 46F Heating Mode (Heating Setback)
- Quiet operation

CONTROL FEATURES

- Wireless remote control (standard)
- Wired remote control (optional)

For specific information on indoor or outdoor unit see Product Data

(Unless otherwise indicated, data applies to both indoor and outdoor models)

System	Size	36	
	Outdoor Model	25HHA436A003 224ANS036000	
	Indoor Model	40MKQB36F--3	
Performance	Cooling Rated Capacity	Btu/h	34,200
	SEER		14.0
	EER		11
	Heating Rated Capacity	Btu/h	34,200
	HSPF		8.2
	COP	W/W	4.1
Controls	Wireless Remote Controller (°F/°C)	Standard	
	Wired Remote Controller (°F/°C)	Optional	
Operating Range	Cooling Outdoor DB Min - Max	°F	55~125 (-20°F w / Low-Ambient Kit)
	Cooling Indoor DB Min -Max	°F	64~90
	Heating Outdoor DB Min -Max	°F	17~75
	Heating Indoor DB Min -Max	°F	32~81
Piping	Total Piping Length	Ft.	200'
	Drop (OD above ID)	Ft.	200'
	Lift (OD below ID)	Ft.	65'
	Outdoor Pipe Connection Size - Liquid	In.	3/8"
	Outdoor Pipe Connection Size - Suction	In.	7/8"
	Indoor Pipe Connection Size - Liquid	In.	3/8"
	Indoor Pipe Connection Size - Suction	In.	3/4"

Electrical	Outdoor Voltage, Phase, Cycle	V/Ph/Hz	208/230-1-60
	Indoor Voltage, Phase, Cycle	V/Ph/Hz	208/230-1-60
	Power Supply	Indoor and outdoor units have dedicated power supply	
	MCA (Outdoor)	A.	19
	MOCP - Fuse Rating (Outdoor)	A.	30
	MCA (Indoor)	A.	3
Outdoor	MOCP - Fuse Rating (Indoor)	A.	15
	Unit Width	In.	44.5
	Unit Height	In.	37.1
	Unit Depth	In.	17.1
	Net Weight	Lbs.	197
Indoor	Airflow	CFM	2,615
	Unit Width	In.	65.0
	Unit Height	In.	9.3
	Unit Depth	In.	26.6
	Net Weight	Lbs.	98.8
	Number of Fan Speeds		3
	Airflow (lowest to highest)	CFM	1310/1400/1470
	Sound Pressure (lowest to highest)	dB(A)	55/57/59
	Air throw Data	Ft.	29

Accessories

- ☐ Wired Remote Control
☐ Condensate Pump
☐ Crankcase Heater

- ☐ Low Ambient Kit
☐ Isolation Relay Kit
☐ Hard Start Kit

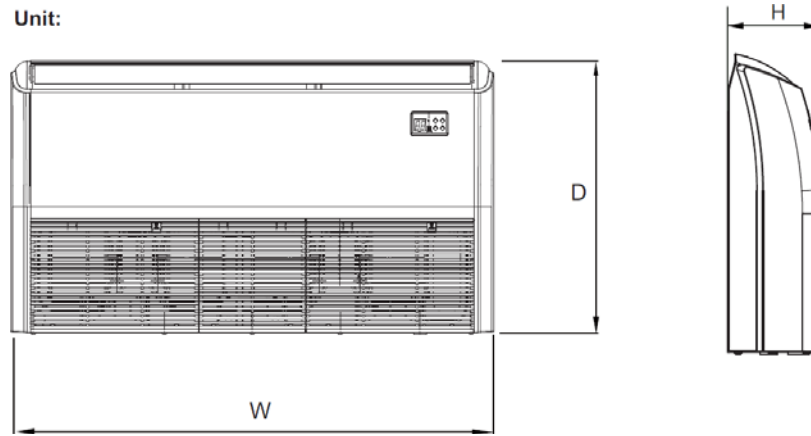
- ☐ Wind Baffle
☐ Wall Mounting Kit
☐ Liquid Line Solenoid Kit

Construction View

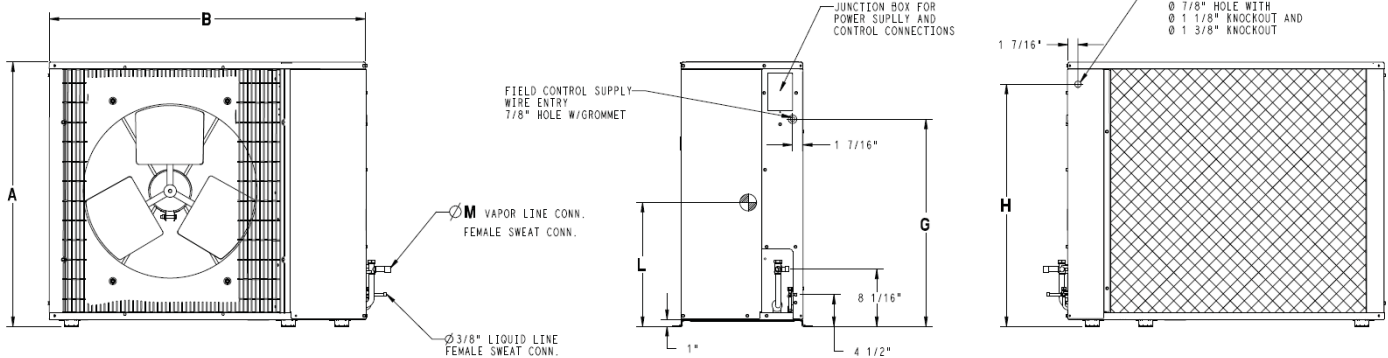
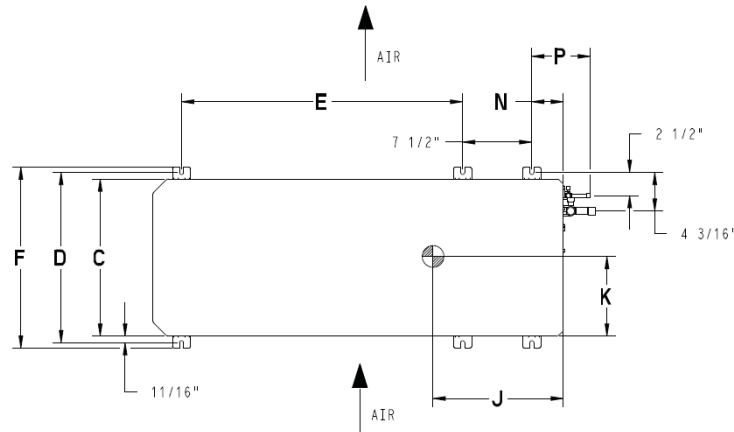
Indoor Unit 40MKQB36F--3

Outdoor Unit 25HHA436A003/224ANS036000

Unit:



Unit Size	Height (H) in. (mm)	Width (W) in. (mm)	Depth (D) in. (mm)	Operating Weight lb (kg)
36	9.3 (235)	65.0 (1650)	26.6 (675)	98.8 (44.8)



Unit Size	A	B	C	D	E	F	G	H	J	K	L	M	N	P	Operating Weight lb (kg)
36	37.1 (943)	44.5 (1130)	17.1 (433)	18.4 (468)	30.5 (775)	19.6 (498)	29.1 (740)	34.1 (865)	13.7 (348)	8.1 (206)	15.9 (403)	0.9 (22)	3.4 (86)	5.5 (140)	197 (89)

