

# Underceiling Cooling Only Ductless System

Indoor Model: 40MKCB54F--3

Outdoor Model: 24AHA460A003/124ANS060000

## Submittal Data

Job Data: \_\_\_\_\_ Location: \_\_\_\_\_

Buyer: \_\_\_\_\_ Buyer P.O. #: \_\_\_\_\_ Carrier #: \_\_\_\_\_

Unit Number: \_\_\_\_\_ Model Number: \_\_\_\_\_

Performance Data Certified By: \_\_\_\_\_ Date: \_\_\_\_\_

### STANDARD FEATURES

- **Convertible: Floor Console – Underceiling**
- Cost Competitive
- Small footprint
- Fixed Speed Compressor
- WeatherArmor Ultra™ cabinet
- **Low ambient operation to -20°F (with low ambient accessory)**
- 200 Ft. line lengths
- Modes: Cool, Dry, Fan, Auto
- Sleep mode
- Dehumidification mode
- Timer
- Louver Control (Fixed or Swing)
- Follow me
- Quiet operation

### CONTROL FEATURES

- Wireless remote control (standard)
- Wired remote control (optional)

For specific information on indoor or outdoor unit see Product Data  
(Unless otherwise indicated, data applies to both indoor and outdoor models)

System	Size	54	
	Outdoor Model	24AHA460A003 124ANS060000	
	Indoor Model	40MKCB54F--3	
Performance	Cooling Rated Capacity	Btu/h	53,000
	SEER		14.0
	EER		11.7
Controls	Wireless Remote Controller (°F/°C)	Standard	
	Wired Remote Controller (°F/°C)	Optional	
Operating Range	Cooling Outdoor DB Min - Max	°F	55~125 (-20°F w / Low-Ambient Kit)
	Cooling Indoor DB Min -Max	°F	64~90
Piping	Total Piping Length	Ft.	200
	Drop (OD above ID)	Ft.	200
	Lift (OD below ID)	Ft.	65
	Outdoor Pipe Connection Size - Liquid	In.	3/8"
	Outdoor Pipe Connection Size - Suction	In.	1 1/8"
	Indoor Pipe Connection Size - Liquid	In.	3/8"
	Indoor Pipe Connection Size - Suction	In.	3/4"

Electrical	Outdoor Voltage, Phase, Cycle	V/Ph/Hz	208/230-1-60
	Indoor Voltage, Phase, Cycle	V/Ph/Hz	208/230-1-60
	Power Supply	Indoor and outdoor units have dedicated power supply	
	MCA (Outdoor)	A.	31.1
	MOCP - Fuse Rating (Outdoor)	A.	50
	MCA (Indoor)	A.	3
Outdoor	MOCP - Fuse Rating (Indoor)	A.	15
	Unit Width	In.	44.5
	Unit Height	In.	43.1
	Unit Depth	In.	17.1
	Net Weight	Lbs.	245
	Airflow	CFM	2,785
Indoor	Unit Width	In.	65.0
	Unit Height	In.	9.3
	Unit Depth	In.	26.6
	Net Weight	Lbs.	98.8
	Number of Fan Speeds		3
	Airflow (lowest to highest)	CFM	1310/1400/1470
	Sound Pressure (lowest to highest)	dB(A)	55/57/59
	Air throw Data	Ft.	29

## Accessories

- ☐ Wired Remote Control  
☐ Condensate Pump  
☐ Crankcase Heater

- ☐ Low Ambient Kit  
☐ Winter Start Kit  
☐ Hard Start Kit  
☐ Wind Baffle

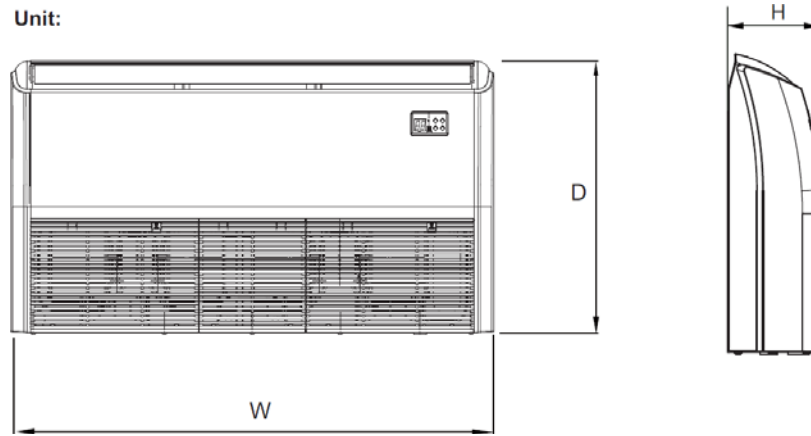
- ☐ Stacking Kit  
☐ Wall Mounting Kit  
☐ Liquid Line Solenoid Kit  
☐ Low Pressure Switch Kit

# Construction View

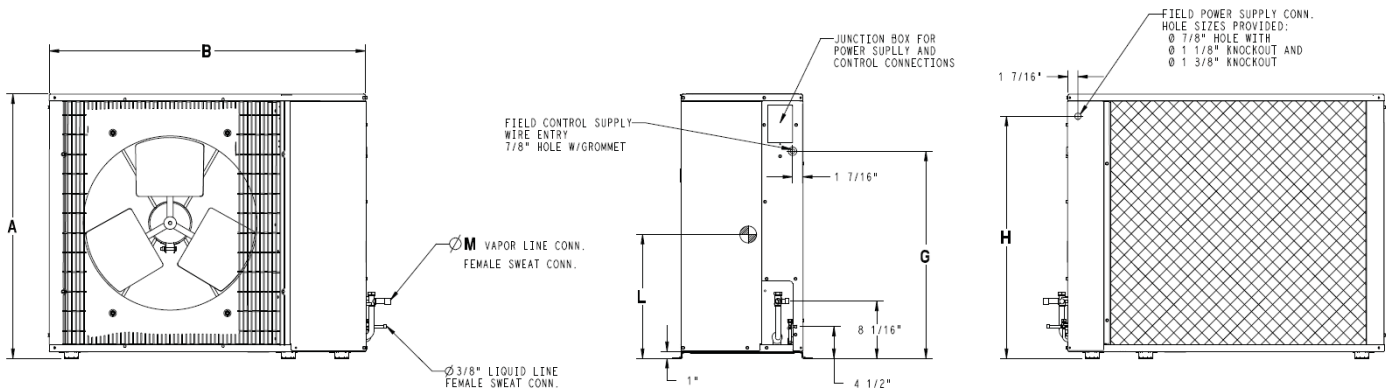
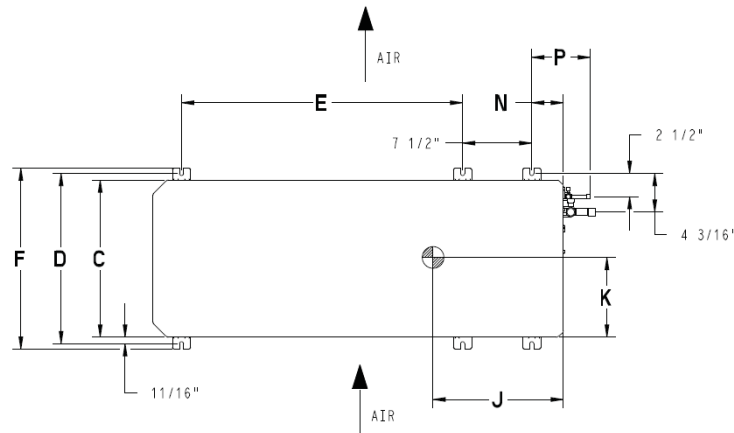
Indoor Unit 40MKCB54F--3

Outdoor Unit 24AHA460A003/124ANS060000

Unit:



Unit Size	Height (H) in. (mm)	Width (W) in. (mm)	Depth (D) in. (mm)	Operating Weight lb (kg)
54	9.3 (235)	65.0 (1650)	26.6 (675)	98.8 (44.8)



Unit Size	A	B	C	D	E	F	G	H	J	K	L	M	N	P	Operating Weight lb (kg)
60	43.1 (1095)	44.5 (1130)	17.1 (433)	18.4 (468)	30.5 (775)	19.6 (498)	35.1 (892)	40.1 (1018)	14.5 (368)	8.5 (216)	18.9 (479)	0.9 (22)	3.4 (86)	6.4 (162)	245 (111)

