

# High Wall Cooling Only System

Indoor Model: 40MKCB32B--3

Outdoor Model: 24AHA436A006/124AES036000

## Submittal Data

Job Data: \_\_\_\_\_ Location: \_\_\_\_\_

Buyer: \_\_\_\_\_ Buyer P.O. #: \_\_\_\_\_ Carrier #: \_\_\_\_\_

Unit Number: \_\_\_\_\_ Model Number: \_\_\_\_\_

Performance Data Certified By: \_\_\_\_\_ Date: \_\_\_\_\_

### STANDARD FEATURES



- Small footprint
- Fixed Speed Compressor
- WeatherArmor Ultra™ cabinet
- Low ambient operation to -20°F (with low ambient accessory)
- 200 Ft. line lengths
- Modes: Cool, Dry, Fan, Auto
- Sleep mode
- Dehumidification mode
- Timer
- Louver Control (Fixed or Swing)
- Follow me
- Quiet operation

### CONTROL FEATURES

- Wireless remote control (standard)

For specific information on indoor or outdoor unit see Product Data  
(Unless otherwise indicated, data applies to both indoor and outdoor models)

System	Size	32	
	Outdoor Model	24AHA436A006 124AES036000	
	Indoor Model	40MKCB32B--3	
Performance	Cooling Rated Capacity	Btu/h	32,000
	SEER		14.0
	EER		12.2
Controls	Wireless Remote Controller (°F/°C)	Standard	
	Wired Remote Controller (°F/°C)	N/A	
Operating Range	Cooling Outdoor DB Min - Max	°F	55~125 (-20°F w / Low-Ambient Kit)
	Cooling Indoor DB Min -Max	°F	64~90
Piping	Total Piping Length	Ft.	200'
	Drop (OD above ID)	Ft.	200'
	Lift (OD below ID)	Ft.	65'
	Outdoor Pipe Connection Size - Liquid	In.	3/8"
	Outdoor Pipe Connection Size - Suction	In.	7/8"
	Indoor Pipe Connection Size - Liquid	In.	3/8"
	Indoor Pipe Connection Size - Suction	In.	7/8"

Electrical	Outdoor Voltage, Phase, Cycle	V/Ph/Hz	460-3-60
	Indoor Voltage, Phase, Cycle	V/Ph/Hz	208/230-1-60
	Power Supply	Indoor and outdoor units have dedicated power supply	
	MCA (Outdoor)	A.	7.6
	MOCP - Fuse Rating (Outdoor)	A.	15
	MCA (Indoor)	A.	1
Outdoor	MOCP - Fuse Rating (Indoor)	A.	15
	Unit Width	In.	44.5
	Unit Height	In.	37.1
	Unit Depth	In.	17.1
	Net Weight	Lbs.	184.0
	Airflow	CFM	2615
Indoor	Unit Width	In.	57.1
	Unit Height	In.	13.4
	Unit Depth	In.	10.4
	Net Weight	Lbs.	55.1
	Number of Fan Speeds		4
	Airflow (lowest to highest)	CFM	525/685/834/847
	Sound Pressure (lowest to highest)	dB(A)	46/48/52/53
	Air throw Data	Ft.	25

## Accessories

- ☐ Controls Kit (Required, sold separately)
- ☐ Condensate Pump
- ☐ Crankcase Heater

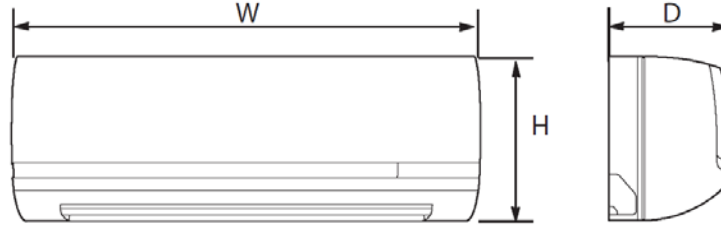
- ☐ Low Ambient Kit
- ☐ Winter Start Kit
- ☐ Hard Start Kit
- ☐ Wind Baffle

- ☐ Stacking Kit
- ☐ Wall Mounting Kit
- ☐ Liquid Line Solenoid Kit

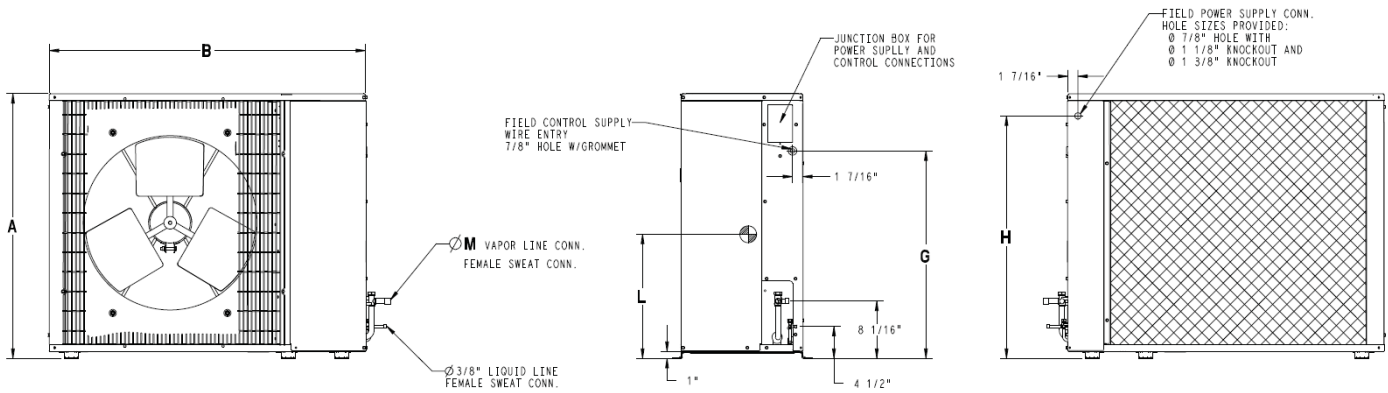
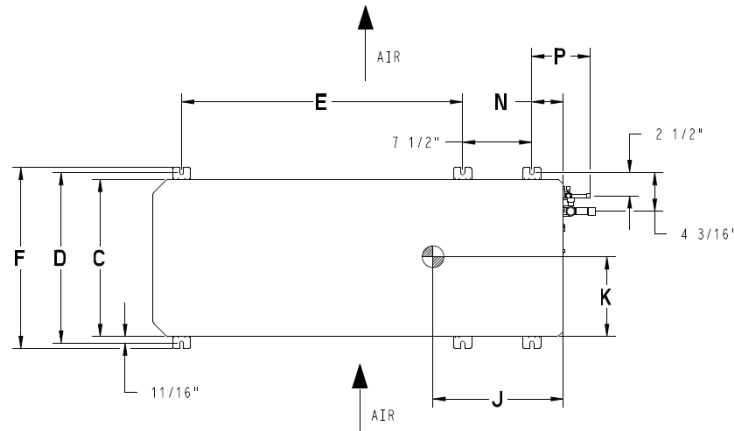
# Construction View

## Indoor Unit 40MKCB32B--3

### Outdoor Unit 24AHA436A006/124AES036000



Unit Size	Height (H) in. (mm)	Width (W) in. (mm)	Depth (D) in. (mm)	Operating Weight lb (kg)
32	13.4 (343)	57.1 (1450)	10.4 (265)	55.1 (25.0)



Unit Size	A	B	C	D	E	F	G	H	J	K	L	M	N	P	Operating Weight lb (kg)
36	37.13 (943.1)	44.50 (1130)	17.06 (433)	18.87 (479)	30.50 (774)	19.63 (498)	29.13 (485)	34.06 (865)	13.68 (347)	8.13 (206)	15.94 (404)	.94 (13)	3.37 (85)	6.37 (161)	184 (83.4)

