

**CRLVHLGD042A00  
THRU  
CRLVHLGD044A00**

**ACCESSORY LOUVERED HAIL GUARD  
GAS HEAT/ELECTRIC COOLING,  
AND ELECTRIC COOLING UNITS  
12.5 to 23 TONS**

## Installation Instructions

**IMPORTANT:** Read these instructions completely before attempting to install the accessory louvered hail guard.

### PACKAGE CONTENTS- CRLVHLGD042A00

QTY	DESCRIPTION
2	Side Panel, Coil
2	End Panel, Coil
16	Plastic Grommet
16	Screws 10AB x 3/4 LG / 10AB x 3/8 LG

### CRLVHLGD043A00

QTY	DESCRIPTION
2	Side Panel, Coil
2	End Panel, Coil
24	Plastic Grommet
24	Screws 10AB x 3/4 LG / 10AB x 3/8 LG

### CRLVHLGD044A00

QTY	DESCRIPTION
4	Side Panel, Coil
2	End Panel, Coil
36	Plastic Grommet
36	Screws 10AB x 3/4 LG / 10AB x 3/8 LG

### PACKAGE USAGE


The package usage tables are located at the end of the document.

### SAFETY CONSIDERATIONS

Installation and servicing of air-conditioning equipment can be hazardous due to system pressure and electrical components. Only trained and qualified service personnel should install, repair, or service air-conditioning equipment.

Untrained personnel can perform basic maintenance functions of cleaning coils and filters and replacing filters. All other operations should be performed by trained service personnel. When working on air-conditioning equipment, observe precautions in the literature, tags and labels attached to the unit, and other safety precautions that may apply.

Follow all safety codes. Wear safety glasses and work gloves.

Recognize safety information. This is the safety-alert symbol . When you see this symbol on the unit and in instructions or manuals, be alert to the potential for personal injury.

Understand the signal words DANGER, WARNING, and CAUTION. These words are used with the safety-alert symbol. DANGER identifies the most serious hazards which **will** result in severe personal injury or death. WARNING signifies a hazard which **could** result in personal injury or death. CAUTION is used to identify unsafe practices which **may** result in minor personal injury or product and property damage. NOTE is used to highlight suggestions which **will** result in enhanced installation, reliability, or operation.

### WARNING

#### ELECTRICAL OPERATION HAZARD

Failure to follow this warning could result in personal injury or death.

Before performing service and maintenance operations on unit, turn off main power switch to unit. If gas unit, shut off gas supply before shutting off main power.

**TAG DISCONNECT SWITCH WITH A SUITABLE LOCKOUT TAG AND WARNING LABEL.**

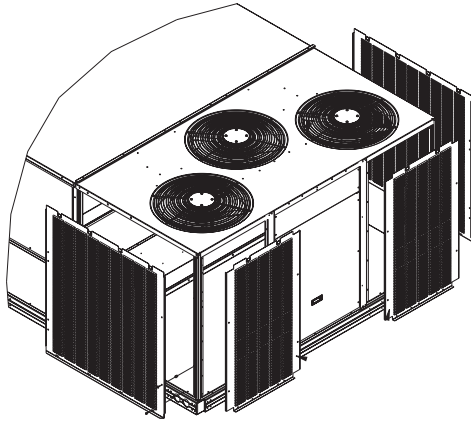
### GENERAL

Louvered hail guard packages are designed to protect the rooftop unit condenser coil from hail and general contact damage. Excessive damage to rooftop unit outdoor coils can result in diminished performance due to reduced air flow over the heat transfer surfaces.

### INSTALLATION

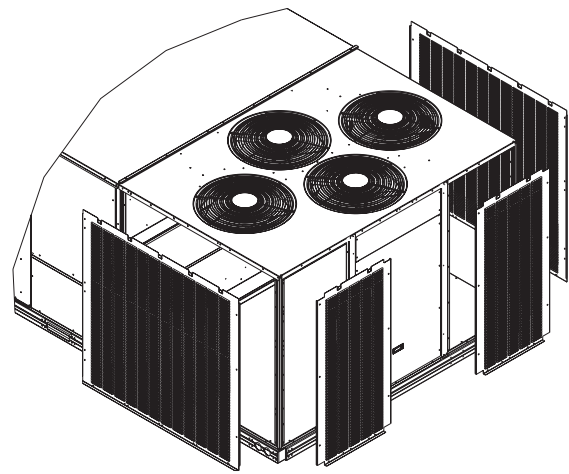
1. Verify the correct hail guard part number is provided for the desired rooftop unit size. See Package Usage table at end of instruction.
2. Remove shipping covers from unit.
3. Remove wire grills from unit and save screws. (See Fig. 1.)
4. Insert (4) plastic grommets in the square holes of each corner post as shown in Fig. 2.

5. Using screws provided with kit, install end panels. Engage top notch in each panel to top cover flange as shown in Fig. 3. Drive screws through panel and into basepan and plastic grommets in post. Use screws to attach panels to center posts as shown in Fig. 4.

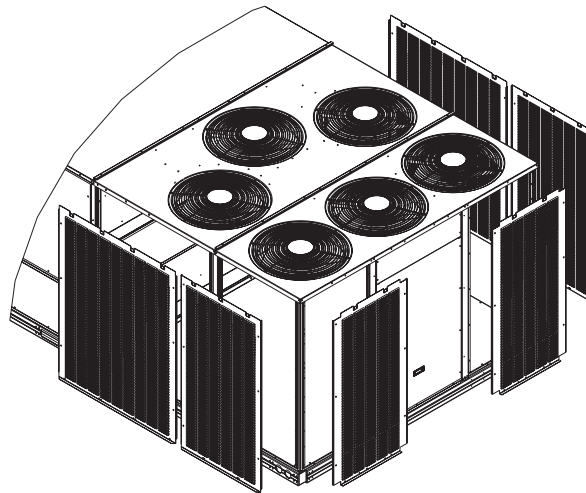


CRLVHLGD042A00

6. Install side panels engaging notch in top of panel as shown in Fig. 3. Install screws through panel into basepan and grommets previously installed.
7. Restore power to unit.



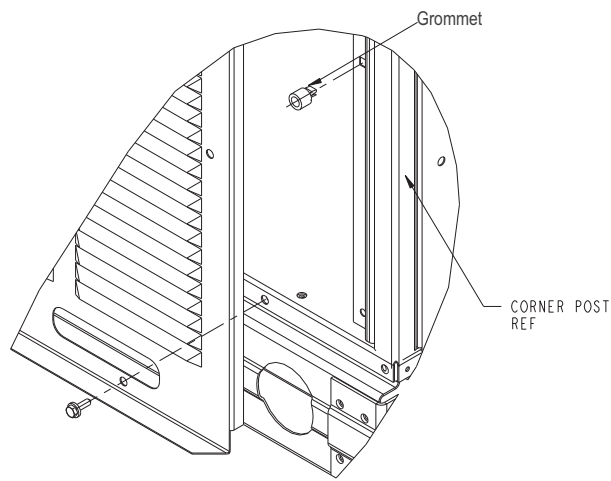
CRLVHLGD043A00



CRLVHLGD044A00

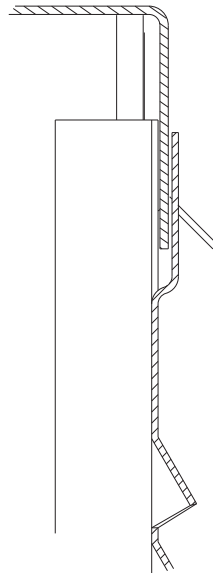
**Fig. 1 - Hail Guard Installation**

C13413



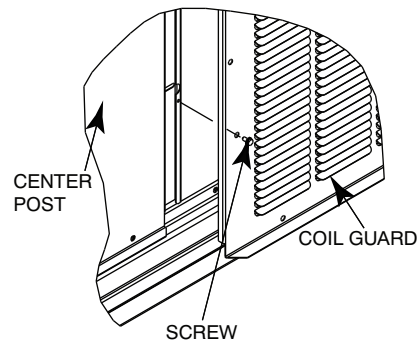
**Fig. 2 - Grommets in Corner Post**

C09479



**Fig. 3 - Side Panels Installed in Top of Panel**

C09481



**Fig. 4 - Coil Guards to Center Post**

C13414

## PACKAGE USAGE-CARRIER

Hailguard	Model	Unit Size	Coil Type
CRLVHLGD042A00	48LC, 50LC	14	Round tube plate fin
CRLVHLGD043A00	48LC, 50LC	17, 20	Round tube plate fin
CRLVHLGD044A00	48LC, 50LC	24,26	Round tube plate fin

