

Cassette Cooling Only System

Indoor Model: 40MKCB18C--3

Outdoor Model: 24AHA418A003/124ANS018000

Submittal Data

Job Data: _____ Location: _____

Buyer: _____ Buyer P.O. #: _____ Carrier #: _____

Unit Number: _____ Model Number: _____

Performance Data Certified By: _____ Date: _____

STANDARD FEATURES

- Cost Competitive
- Small footprint
- Fixed Speed Compressor
- WeatherArmor Ultra™ cabinet
- **Low ambient operation to -20°F (with low ambient accessory)**
- 200 Ft. line lengths
- Built in Condensate pump
- Fresh Air Connection
- Modes: Cool, Dry, Fan, Auto
- Sleep mode
- Dehumidification mode
- Timer
- Louver Control (Fixed or Swing)
- Follow me
- Quiet operation

CONTROL FEATURES

- Wireless remote control (standard)
- Wired remote control (optional)

For specific information on indoor or outdoor unit see Product Data
(Unless otherwise indicated, data applies to both indoor and outdoor models)

System	Size	18	
	Outdoor Model	24AHA418A003 124ANS018000	
	Indoor Model	40MKCB18C--3	
Performance	Cooling Rated Capacity	Btu/h	17,100
	SEER		14.0
	EER		12.2
Controls	Wireless Remote Controller (°F/°C)	Standard	
	Wired Remote Controller (°F/°C)	Optional	
Operating Range	Cooling Outdoor DB Min - Max	°F	55~125 (-20°F w / Low-Ambient Kit)
	Cooling Indoor DB Min -Max	°F	64~90
Piping	Total Piping Length	Ft.	200
	Drop (OD above ID)	Ft.	200
	Lift (OD below ID)	Ft.	65
	Outdoor Pipe Connection Size - Liquid	In.	3/8"
	Outdoor Pipe Connection Size - Suction	In.	5/8"
	Indoor Pipe Connection Size - Liquid	In.	3/8"
	Indoor Pipe Connection Size - Suction	In.	5/8"

Electrical	Outdoor Voltage, Phase, Cycle	V/Ph/Hz	208/230-1-60
	Indoor Voltage, Phase, Cycle	V/Ph/Hz	208/230-1-60
	Power Supply	Indoor and outdoor units have dedicated power supply	
	MCA (Outdoor)	A.	11.8
	MOCP - Fuse Rating (Outdoor)	A.	20
	MCA (Indoor)	A.	1
Outdoor	MOCP - Fuse Rating (Indoor)	A.	15
	Unit Width	In.	36.9
	Unit Height	In.	31.1
	Unit Depth	In.	14.6
	Net Weight	Lbs.	146
	Airflow	CFM	1,285
Indoor	Unit Width	In.	33.1
	Unit Height	In.	33.1
	Unit Depth	In.	11.3
	Net Weight	Lbs.	54.0
	Number of Fan Speeds		3
	Airflow (lowest to highest)	CFM	370/450/630
	Sound Pressure (lowest to highest)	dB(A)	39/43/47
	Air throw Data	Ft.	15

Accessories

- ☐ Grille/Ceiling panel (Required, sold separately)
- ☐ Wired Remote Control
- ☐ Crankcase Heater

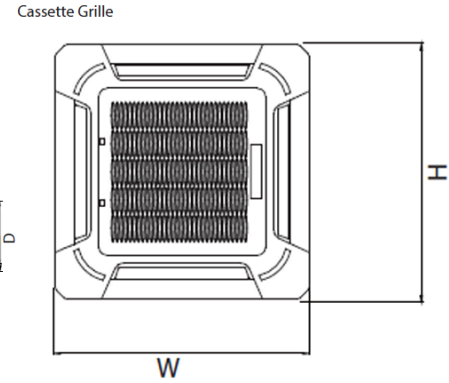
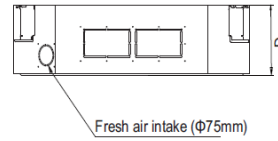
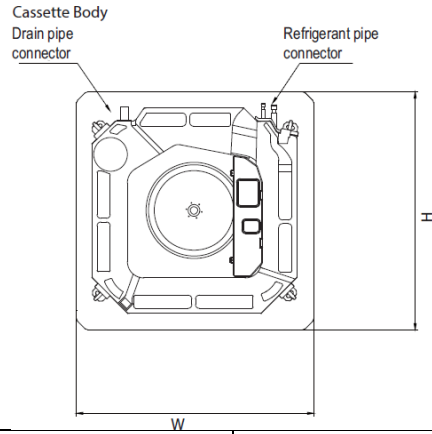
- ☐ Low Ambient Kit
- ☐ Winter Start Kit
- ☐ Hard Start Kit
- ☐ Wind Baffle

- ☐ Stacking Kit
- ☐ Wall Mounting Kit
- ☐ Liquid Line Solenoid Kit

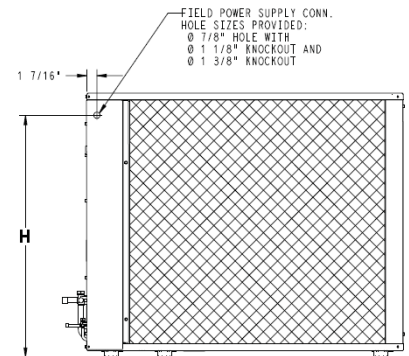
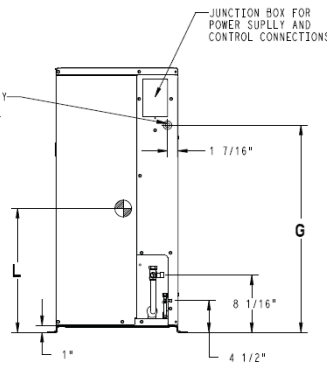
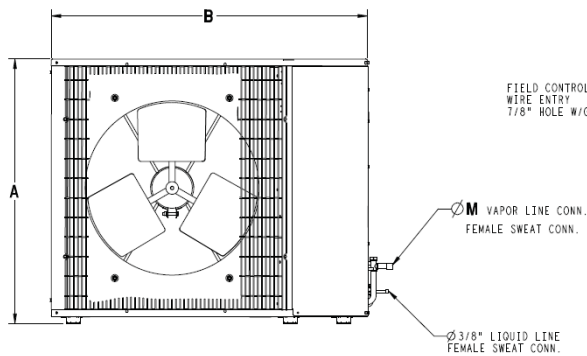
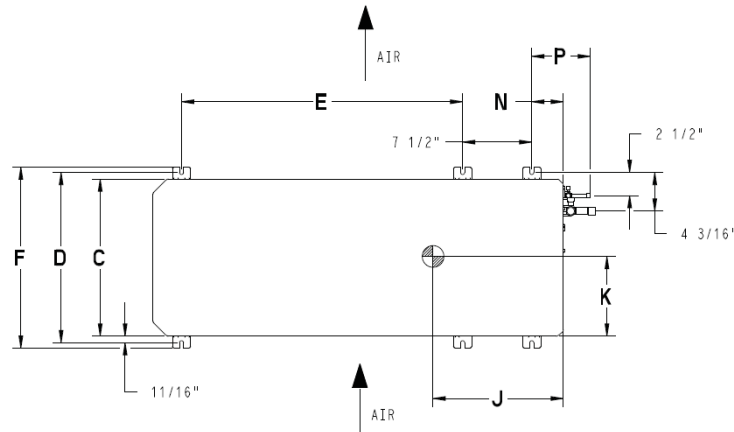
Construction View

Indoor Unit 40MKCB18C--3

Outdoor Unit 24AHA418A003/124ANS018000



Unit Size	Height (H) in. (mm)	Width (W) in. (mm)	Depth (D) in. (mm)	Operating Weight lb (kg)
18	33.1 (840)	33.1 (840)	8.1 (205)	54.0 (24.5)
Cassette Grille	37.4 (950)	37.4 (950)	2.2 (55)	11.0 (5)



Unit Size	A	B	C	D	E	F	G	H	J	K	L	M	N	P	Operating Weight lb (kg)
18	31.1 (791)	36.9 (938)	14.6 (370)	16 (406)	23.4 (595)	17.2 (437)	23.1 (587)	28.1 (713)	13 (330)	6.6 (168)	11.3 (286)	0.6 (16)	2.9 (73)	5.8 (148)	146 (66)

