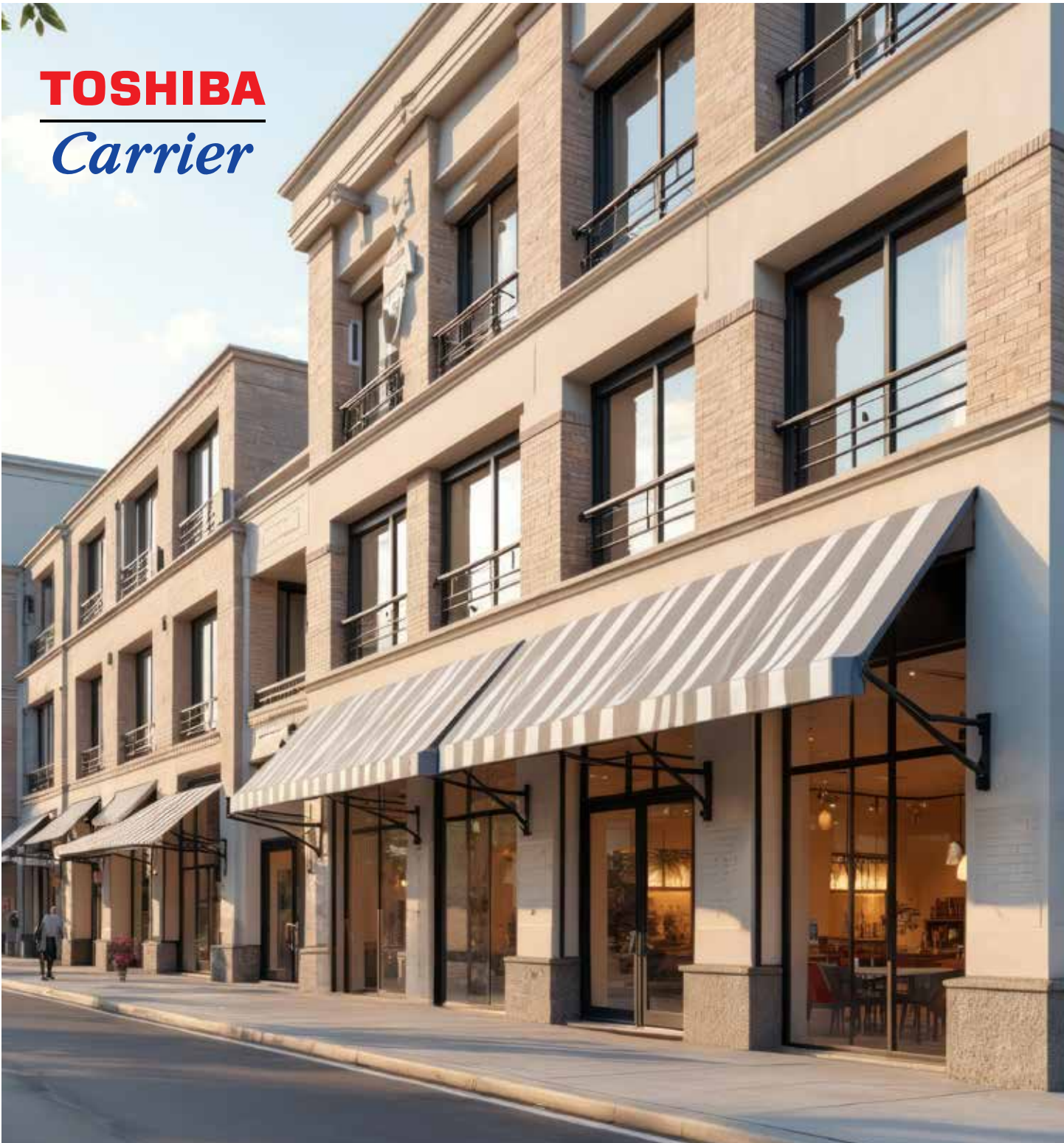


TOSHIBA
Carrier



Opti-V Systems
3 - 12 Ton



Toshiba Carrier Opti-V Systems

Opti-V systems are single-phase variable refrigerant flow heat pumps that provide heating or cooling to individual zones using an inverter-driven compressor for precise capacity control. They offer a scalable solution for multi-zone applications where limited electrical infrastructure, space constraints, and varied comfort requirements are key design considerations.

Opti-V systems give home and building owners the ultimate solution in flexible comfort control using individual thermostats or centralized control panels. For enhanced indoor comfort, each system features DC fan motors and an aerodynamic fan design to ensure quiet, efficient, and reliable performance, even under part-load conditions.

Here are some highlights:

- > Designed for use with limited electrical infrastructure
- > Fewer ductwork requirements for easier installation
- > Optimized load matching for improved part-load efficiency
- > Long-line length capability for greater design flexibility
- > Building Management System (BMS) compatible for streamlined system management



Core Components of an Opti-V System:

1. Outdoor Units

Available in 3-, 4-, 5-, 6-, and 12-ton capacities, Opti-V outdoor units are powered by single-phase electricity, and they include inverter-driven rotary compressors and advanced fan designs for quiet, efficient operation. They can deliver up to 29.7 SEER2 cooling and up to 12.2 HSPF2 heating and have an operating range down to -13°F and up to 122°F.

2. Indoor Units

Up to 25 indoor units can be connected to a single system, with a variety of styles to meet various design and installation needs. Toshiba Carrier Opti-V indoor units are available for both ductless and ducted applications.

3. Refrigerant Piping

Branch (Y) piping connects multiple indoor units to a single outdoor unit. This single line-set configuration allows for significantly longer refrigerant line lengths of over 3,000 feet and greater vertical separation - ideal for multi-zone or multi-level buildings.

4. SV Boxes

Serve as a refrigerant isolation point, helping to limit the amount of refrigerant released in the event of a leak and thereby improving overall system safety and compliance. By isolating refrigerant flow to specific zones, the SV box reduces system exposure and simplifies troubleshooting and service. Each SV box can be connected to up to three indoor units, allowing for flexible system design while maintaining precise refrigerant control and protection at the zone level.

5. Wiring

Two-wire configuration between heat pump and indoor units allows for Toshiba Carrier TU2C-Link bidirectional communication making the system fully communicating.

Opti-V System Controls

Opti-V systems offer a versatile range of control options designed to meet the needs of a wide variety of applications. Individual zones can be easily managed using handheld remotes or sleek wall-mounted controllers, giving occupants simple, intuitive control over their comfort. For multi-zone spaces or common areas, group controls allow multiple indoor units to operate together, streamlining setup and day-to-day operation. This flexible control architecture makes it easy to tailor solutions for each project while helping contractors and distributors deliver a system that balances comfort, efficiency, and ease of use.



Hand-held remote

Compatibility:
Factory supplied with all Opti-V Indoor Units

Connection: Wireless

Basic Functions:

- Fan Speed
- Mode Selection
- Louver Control
- Timer



Single Zone Wall Control

Compatibility: Optional controller compatible with Toshiba Carrier Opti-V VRF, and RAV systems

Connections: 2-wire HA/HB

Basic Functions:

- Fan speed
- Clock setting
- Schedule timer
- Dual set-point
- Service Check Mode



Compact Central Controller

Compatibility: Optional controller compatible with all Toshiba Carrier Opti-V, VRF, and RAV Systems

Connections: 2-wire HA/HB Connection

Basic Functions:

- Connects to up to 64 Indoor Units
- Group Control up to 16 Indoor Units
- Unit Addressing Capability
- Fan Speed
- Scheduling
- Dual Set Point
- Service Check Mode

Popular Opti-V Applications

Opti-V heat pump systems represent Toshiba Carrier's commitment to delivering exceptional and innovative solutions for modern comfort needs. From large residential to light commercial and even a mix of both, Opti-V systems can be scaled to deliver the premium comfort and energy-saving performance people expect from the architect of the indoor comfort industry – Toshiba Carrier.



Large Residential Homes



Mid-Rise Apartments & Condos



Mixed Use Buildings



Small Office Buildings



Restaurants

Toshiba Carrier Service Tools and Warranty

- **UART Service Tool:** For professional-grade maintenance and diagnostics solution designed by Toshiba Carrier to simplify service and maximize system performance. Built for authorized technicians, this tool provides a direct interface to compatible HVAC units, delivering real-time visibility into operating conditions and system status. With intuitive access to live and historical data, it streamlines commissioning, troubleshooting, and preventive maintenance—helping reduce downtime and ensure optimal comfort.
- **Opti-V Warranty:** Toshiba Carrier’s proven reputation for engineering excellence, quality, and reliability. Every Opti-V heat pump and heat recovery system is backed by a 10-year parts limited warranty – highlighting a strong commitment to long-term performance and peace of mind.

Toshiba Carrier Opti-V System Selection

VPro Software

Once you’ve selected Toshiba Carrier Opti-V for your project, VPro software makes it simple to design, layout, and prepare the system for quoting. It features built-in error alerts and performance checks that help verify your system design at every step. Developed for ease of use during the early planning stages, VPro helps identify and resolve potential issues before they become costly delays.

VPro puts all your project information in one centralized platform, allowing you to:

- Gain full project visibility from initial design through installation
- Collaborate seamlessly with internal teams and external partners
- Improve inventory planning to support on-time project completion
- Easily transfer project data to tools like QuotePro
- Securely store and access project details in the Cloud



carrier.com 1-800-CARRIER

©2026 Carrier. All Rights Reserved.

Manufacturer reserves the right to discontinue, or change at any time, specifications or designs without notice or without incurring obligations. Third-party trademarks and logos are the property of their respective owners.

01-VRF-019-TC-01
05/2026