



EVOLUTION™ CONNEX™ SYSTEM CONTROL REGISTRATION INSTRUCTIONS

from the Evolution Connex System Control

Step 1

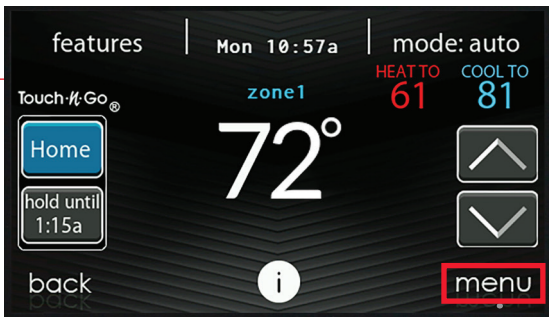
Once the installation is complete and connection to the home network and the Bryant server has been established, touch the Evolution Connex System Control anywhere on the **Home** screen.

Note:
You can check the status of the connections to the home network and Bryant server by touching the "view remote access status" option above the "remote access setup information" shown in Step 5.



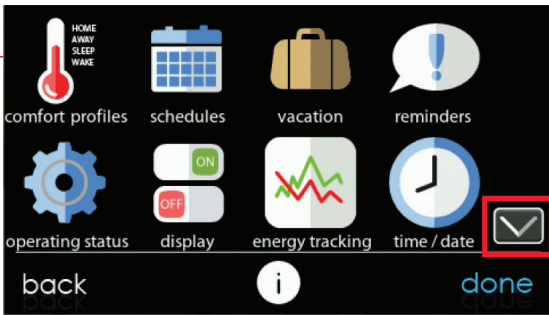
Step 2

Select **Menu**.



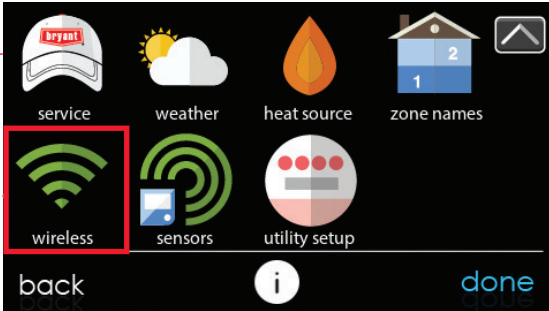
Step 3

Press the down arrow in the lower right hand corner of the first menu screen in order to get to the second menu screen.



Step 4

From the second menu screen, select the **Wireless** icon.



Step 5

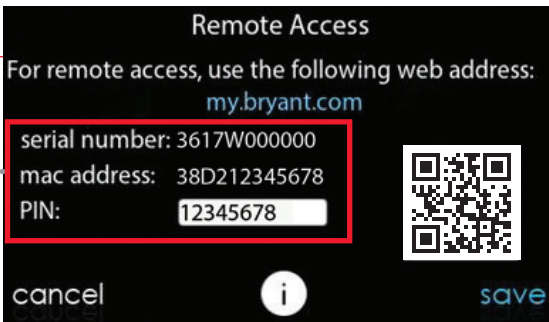
From the **Wi-Fi® Setup** screen, select the **remote access setup information** option.



Step 6

Write down the serial number, MAC address and PIN information included on this screen as you will need this information when you log into the my.bryant.com website.

Note:
If you do not wish to write this information down, you can also take a photo of this screen using your smart phone to use as a visual reference when you are entering the website.



EVOLUTION CONNEX SYSTEM CONTROL REGISTRATION INSTRUCTIONS

from the Bryant SmartHome app

Step 1

From your mobile device, download the Bryant SmartHome app from either the App Store or Google Play.

Note:
Registration requires the serial number, MAC address and PIN information from your control (see Side 1, Step 6 for reference).



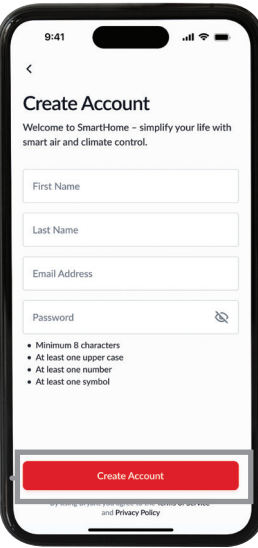
Step 2

Tap **Create Account**. This will begin the registration process.



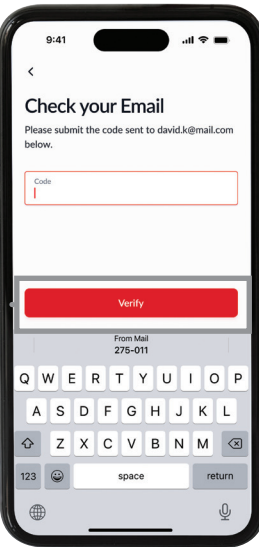
Step 3

On the Create Account page, enter your account information. Please ensure you meet all password requirements then tap **Create Account**.



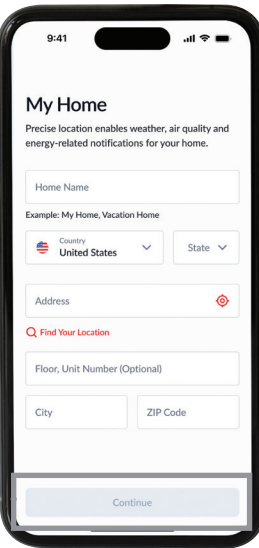
Step 4

To complete your registration, enter the verification code sent to the email address provided and tap **Verify**.



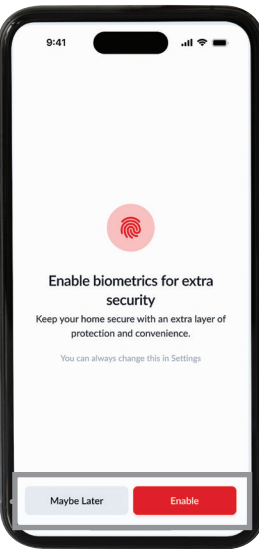
Step 5

Next, you will enter your home location details on the My Home screen then tap **Continue**. You can enter your address manually or tap "Find Your Location" for automatic detection.



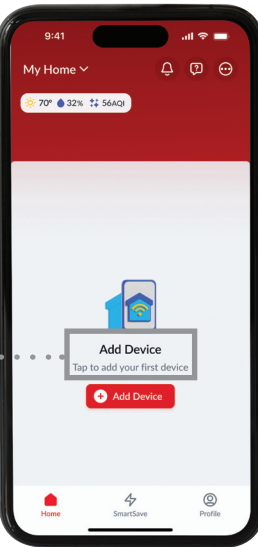
Step 6

For enhanced security and faster access, we recommend enabling fingerprint or facial recognition (biometrics). Select **Enable** or **Maybe Later**.



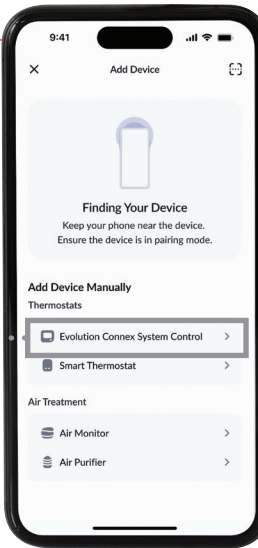
Step 7

Next, you will be directed to the Bryant SmartHome app main screen where you will add your device to the app.



Step 8

Lastly, follow the guided steps provided to add your Evolution Connex System Control and complete the registration and setup process.



Note: You may also register your Evolution Connex System Control via our consumer web portal at my.bryant.com.

