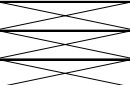
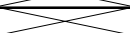


# Clare Integra Specification Sheet

**TABLE # 3**  
**Technical specifications**

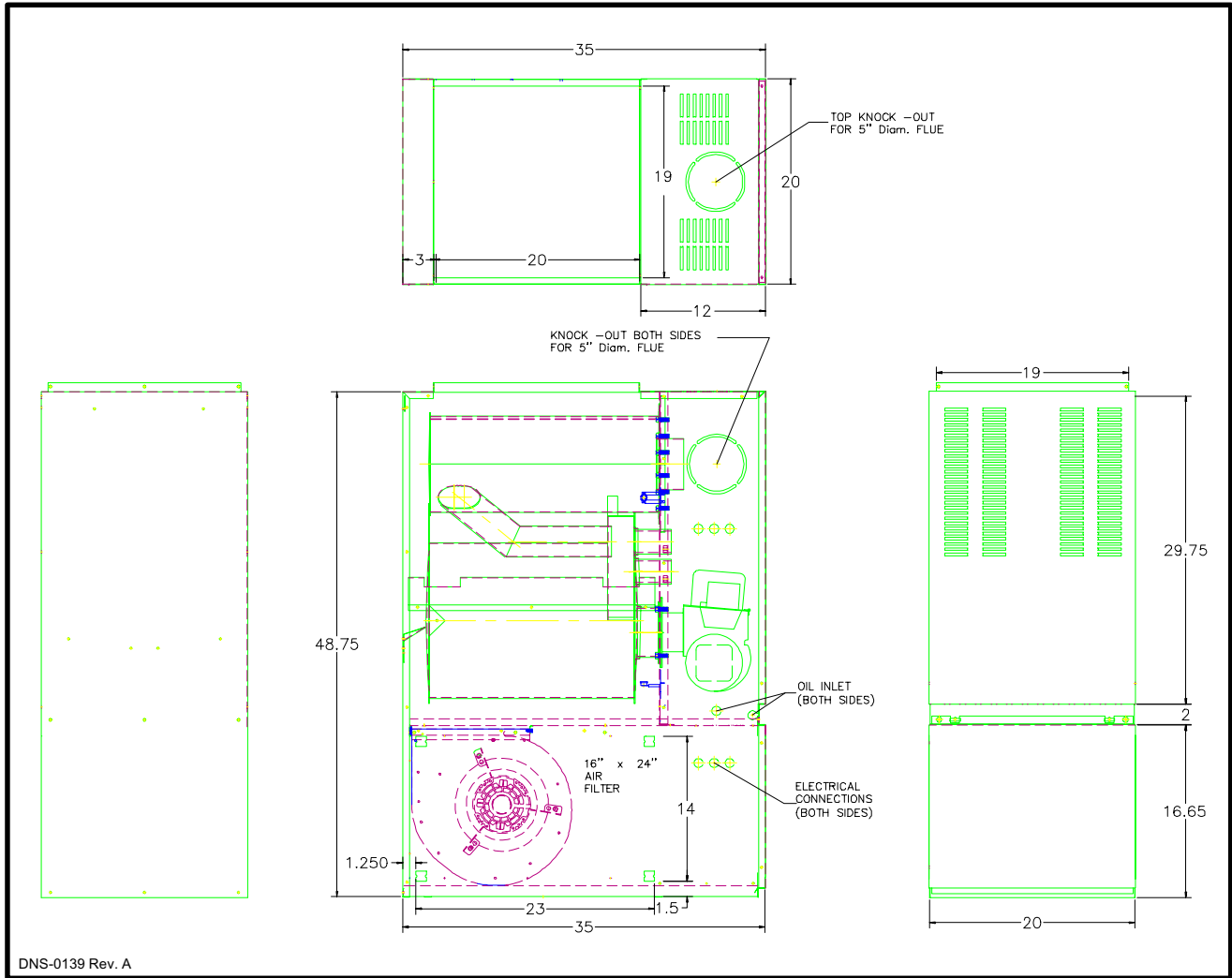
Model : AMP, LBM, OMP & BMF	75 (57)	90 (74)	105 (85)	120 (96)	140 (113)	155 (125)
<b>RATING AND PERFORMANCE</b>						
Firing rate (USGPH)	0.5	0.65	0.75	0.85	1	1.1
Input (BTUh)	70 000	91 000	105 000	119 000	140 000	154 000
Heating capacity (BTUh)	57 000	74 000	85 000	99 000	115 000	127 000
AFUE %	80	80	80	80	80	80
Heating temperature rise (Degr. F)	55 - 85 Degr. F			55 - 85 Degr. F		
<b>BECKETT BURNER; MODEL AFG (3450 rpm)</b>	<b>AFG-F3</b>			<b>AFG-F3</b>		<b>AFG-F6</b>
Low firing rate baffle	YES			YES		YES
Static disc, model	3 3/8" # 31646			2 3/4" # 3383		2 3/4" # 3383
Nozzle - 100 PSIG pump pressure (Delavan)	0.50 - 70W	0.65 - 70W	0.75 - 70B	0.85 - 70B	1.00 - 70W	1.10 - 70W
Combustion air adjustment (shutter band)	0 / 5	0 / 7	0 / 8	1 / 8	4 / 4	2 / 8
<b>RIELLO BURNER; MODEL 40</b>	<b>F3</b>			<b>F5</b>		
Nozzle (Delavan)	0.40 - 70A	0.50 - 70W	0.65 - 70W	0.75 - 70B	0.85 - 70W	1.00 - 70W
Pump pressure (PSIG)	160	170	135	130	140	125
Combustion air adjustment (turbulator band)	3 / 0	3.5 / 0	4 / 0	3 / 0	3.5 / 0	4 / 0
<b>BURNER; MODEL M2000-SCS</b>	<b>*M2000-SCS-H3</b>			<b>M2000-SCS-H3</b>		<b>M2000-SCS-H6</b>
Low firing rate baffle	NO			NO		NO
Static disc, model	3 3/8" # 31646			2 3/4" # 3383		2 3/4" # 3383
Nozzle - 100 PSIG pump pressure (Delavan)		0.60 - 70B	0.65 - 70B	0.75 - 70B	0.85 - 70W	1.00 - 70W
		120	135	130	140	125
Combustion air adjustment (shutter band)		0 / 6	1 / 3	1 / 5	2 / 4	1 / 6
<b>ELECTRICAL SYSTEM</b>						
Volts - Hertz - Phase	115-60-1			115-60-1		
Operating voltage range	104 - 132			104 - 132		
Rated voltage Amp	12.2			15.7		
Minimum ampacity for wiring sizing	13.7			18.1		
Max. wire length (ft.)	26			26		
Max. fuse size (Amps)	15			20		
Control transformer	40 Va			40 Va		
External control power available	Heating	40 Va			40 Va	
	Cooling	30 Va			30 Va	
<b>BLOWER DATA</b>						
Blower speed at 0.5" W.C. static pressure	MED-LOW	MED-HIGH	HIGH	MED-LOW	MED-HIGH	HIGH
Motor (HP) / number of speeds	1/3 HP / 4 speeds			3/4 HP / 4 speeds		
Blower wheel size (in.)	10 X 10			12 X 10		
Filter quantity and size	16 X 24			18 X 30		

\* 0.5 USGPH firing rate is not allowed for SCS application.

**TABLE # 4**  
**Air delivery - CFM with air filter**

SPEED	AMP1			
	EXTERNAL STATIC PRESSURE WITH AIR FILTER			
	0,2	0,3	0,4	0,5
HIGH	1425	1350	1305	1250
MED-HIGH	1130	1045	1000	950
MED-LOW	840	810	770	740
SPEED	AMP2			
	EXTERNAL STATIC PRESSURE WITH AIR FILTER			
	0,2	0,3	0,4	0,5
HIGH	2080	2041	1965	1864
MED-HIGH	1892	1859	1770	1675
MED-LOW	1556	1475	1394	1318

**FIGURE # 4.1**  
**Model: AMP1-IE2, LBM090, OMP057-185I & BMF-090**

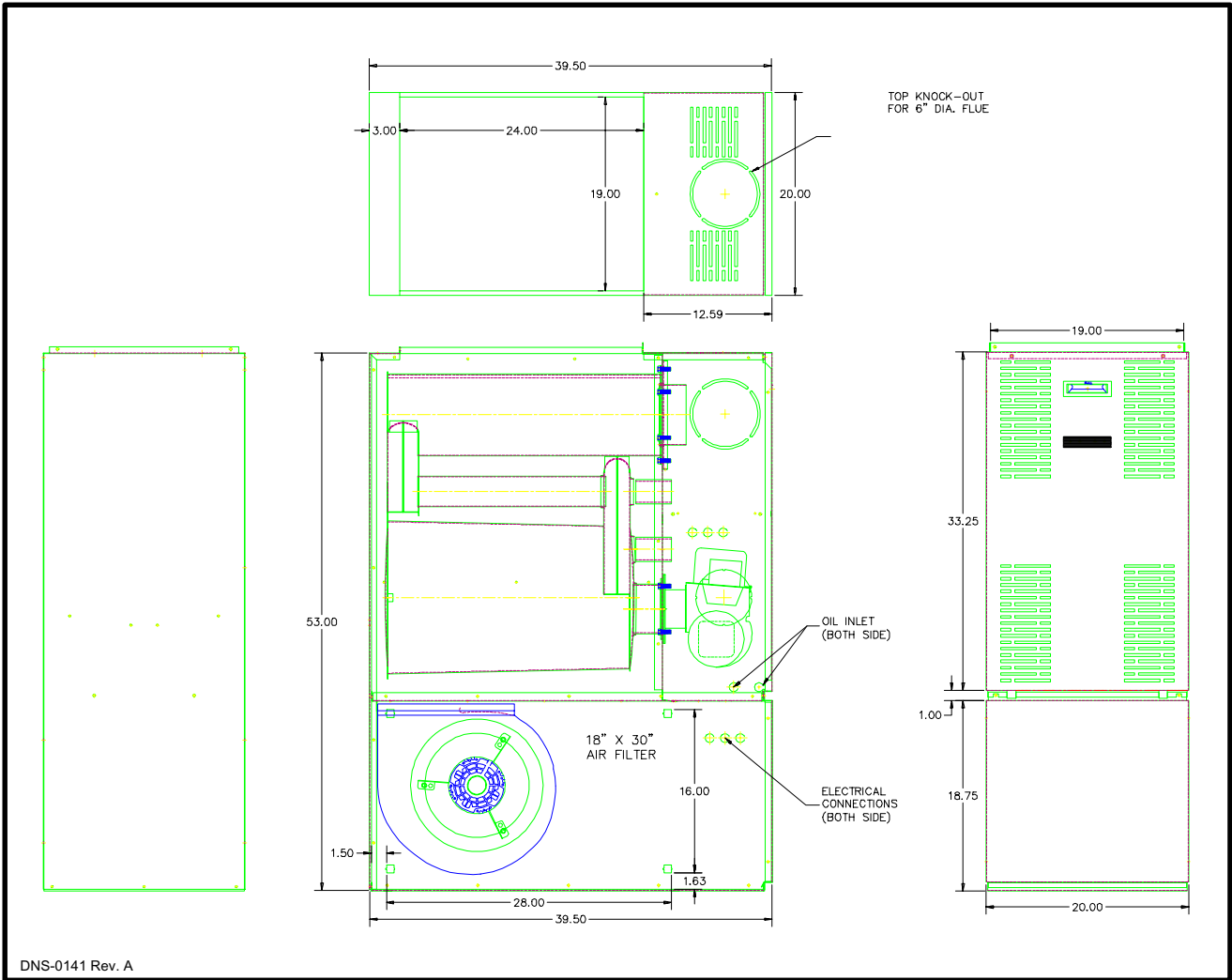


DNS-0139 Rev. A

**TABLE # 5.1**  
**Minimun clearances - combustible materials (In.)**

LOCATION	APPLICATION	UPFLOW	DOWNFLOW	HORIZONTAL
SIDES	FURNACE	0	2	2
	SUPPLY PLENUM WITHIN 6 FT OF FURNACE	1	2	1
BACK	FURNACE	0	1	0
	FURNACE OR PLENUM	2	2	2
TOP	FURNACE OR PLENUM	2	2	2
	HORIZONTAL WARM AIR DUCT WITHIN 6 FT OF FURNACE	2	2	3
BOTTOM	FURNACE (** COMBUSTIBLE FLOOR WITH THE SUBBASE)	0	** 0	** 0
FLUE PIPE	HORIZONTALLY OR BELOW FLUE PIPE	4	4	4
	VERTICALLY ABOVE FLUE PIPE	9	9	9
FRONT	FURNACE	8	8	24

**FIGURE # 4.2**  
**Model: AMP2-IE2, LBM120, OMP096-125I & BMF-125**



**TABLE # 5.2**  
**Minimum clearances - combustibles materials (In.)**

LOCATION	APPLICATION	UPFLOW	DOWNFLOW	HORIZONTAL
SIDES	FURNACE	1	2	2
	SUPPLY PLENUM WITHIN 6 FT OF FURNACE	1	2	1
BACK	FURNACE	0	1	0
TOP	FURNACE OR PLENUM	2	2	2
	HORIZONTAL WARM AIR DUCT WITHIN 6 FT OF FURNACE	2	2	3
BOTTOM	FURNACE (** COMBUSTIBLE FLOOR WITH THE SUBBASE)	0	** 0	** 0
FLUE PIPE	HORIZONTALLY OR BELOW FLUE PIPE	4	4	4
	VERTICALLY ABOVE FLUE PIPE	9	9	9
FRONT	FURNACE	8	8	24