

### FEATURES

#### CONSTRUCTED FOR DURABILITY

- All panels made from galvanized steel pre-coated inside and out - using a polyester top coat, on a urethane primer, over an oxide pre-treatment
- All coils made from copper tube and aluminum fins
- Painted base with embossed support rails
- Embossed water dam in base - prevents water migration to indoor section from condenser area
- Protective coil guard - standard

#### HIGH STATIC CAPABILITY

- Designed for mobile home and permanent residence applications

#### EASY MAINTENANCE

- Slide out blower assembly for easy maintenance
- External gauge ports
- All electrical controls behind one access panel
- One panel allows access to clean evaporator and service all refrigeration components

#### QUALITY PERFORMANCE & RELIABILITY

- Pre-painted condenser coil - provides greater corrosion resistance
- Plastic drain pan - minimizes residual condensate for improved humidity control and air quality

#### DESIGNED FOR EASY INSTALLATION

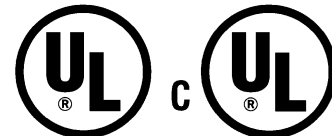
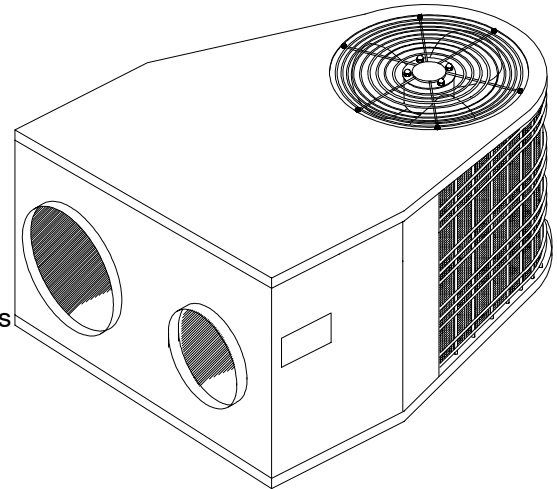
- Round duct flanges with retainer bead for easy flex duct connection
- Low 26-1/2" height (max. 17" duct height) allows installation in tight spaces
- Multi-speed blower motor - adjustable to varying application requirements

#### DEPENDABLE WARRANTY

- 5 years on all parts / 10 year compressor

#### ACCESSORIES

- Slip in electric heaters available with or without breakers
- Flexible duct & duct adder kits to adapt to most applications
- Unit disconnect switch - may eliminate need for field mounted disconnect (\*consult local codes)



Listed By Underwriters' Laboratories



Rated in accordance with ARI Standard 210. Certification applies only when used with proper components as listed with ARI.



## UNIT SPECIFICATIONS

MODEL		PAPC24GA	PAPC30GA	PAPC36GA	PAPC42GA	PAPC48GA	
<b>Electrical</b> <b>Data:</b>	208/230 Volt Data (Phase-Hz)	1-60	1-60	1-60	1-60	1-60	
	Time Delay Fuse	20	25	30	35	45	
	Max. Fuse / HACR Breaker	35	40	50	50	50	
	Ampacity	15.4	19.1	22.9	21.5	26.5	
<b>Condenser</b> <b>Data:</b>	Coil Total Face Area (Sq. Ft.)	10.3	10.3	10.3	10.3	10.3	
	Fins Per In. - Rows	16-1 $\frac{1}{2}$	18-2	18-2	18-2	18-2	
	Tube Dia. (In.)	$\frac{3}{8}$	$\frac{3}{8}$	$\frac{3}{8}$	$\frac{3}{8}$	$\frac{3}{8}$	
	Fan H.P. / Type	$\frac{1}{3}$ / PSC	$\frac{1}{3}$ / PSC	$\frac{1}{3}$ / PSC	$\frac{1}{3}$ / PSC	$\frac{1}{3}$ / PSC	
	Motor:	Full Load Amps.	1.4	1.4	1.4	1.4	1.7
		Lock Rotor Amps.	4.04	4.04	4.04	4.04	5.0
	Fan:	Size (Dia.) (In.)	20.375	20.375	20.375	20.375	20.375
		RPM (Max.)	1120	1120	1120	1120	1140
<b>Evaporator</b> <b>Data</b>	Coil Total Face Area (Sq. Ft.)	4	4	4	4	4	
	Fins Per In. - Rows	14-3	14-3	14-4	14-4	14-4	
	Tube Dia. (In.)	$\frac{3}{8}$	$\frac{3}{8}$	$\frac{3}{8}$	$\frac{3}{8}$	$\frac{3}{8}$	
	Blower H.P. / Type / Speeds	$\frac{1}{4}$ / PSC / 3	$\frac{1}{3}$ / PSC / 3	$\frac{1}{2}$ / PSC / 4	$\frac{1}{2}$ / PSC / 4	1 / PSC / 3	
	Motor:	Full Load Amps	1.4	2.2	4.9	4.9	6.3
		Locked Rotor Amps	3.1	5.6	7.4	7.4	13.2
	Blower	Type / Size	DD10 / 6	DD10 / 6	DD10 / 8	DD10 / 8	DD10 / 8
		CFM (Rated)	800	1000	1200	1400	1650
RPM (Max.)		1075	1075	1075	1075	1075	
<b>Compressor</b> <b>Data:</b>	Full Load Amps.	10.3	13.5	16.0	16.5	18.3	
	Locked Rotor Amps.	56	72.5	88	95	109	
<b>Factory Refrigerant Charge (Type R-22)</b>		92 oz.	96 oz.	84 oz.	104 oz.	114 oz.	
<b>Weights</b>	Approximate Shipping	268	284	302	310	318	

## UNIT PERFORMANCE DATA

Model No.	Capacity <sup>1</sup> BTUH	Sensible / Total Ratio	S.E.E.R.	E.E.R.	Power Input Watts	Evaporator Rated Air Flow CFM
PAPC24GA	24,000	.78	12.0	10.4	2310	800
PAPC30GA	30,000	.76	12.0	10.3	2913	950
PAPC36GA	34,600	.76	12.0	10.1	3426	1200
PAPC42GA	39,000	.76	12.0	10.2	3824	1400
PAPC48GA	45,000	.74	12.0	10.0	4500	1450

<sup>1</sup> Rated Capacity @ ARI standard conditions, 95° Amb, 80° DB/67° WB, 230 Volts. For applications at 208 volts deduct 1000 BTU.

## BLOWER PERFORMANCE DATA

MODEL NUMBER		PAPC24GA			PAPC30GA			PAPC36/42GA			PAPC48GA			
		Med Lo	Med Hi	Hi	Med Lo	Med Hi	Hi	Lo	Med Lo	Med Hi	Hi	Med Lo	Med Hi	Hi
<b>AIR DELIVERY IN CFM</b> <b>VARYING EXT.</b> <b>STATIC</b> <b>PRESSURE (IN. W.C.)</b>	.25	848	868	1085	976	1069	1130	1208	1373	1471	1589	1707	1827	1904
	.35	809	828	1041	946	1023	1086	1190	1337	1427	1540	1651	1759	1822
	.45	764	784	984	946	982	1033	1176	1292	1379	1467	1577	1670	1736
	.55	718	732	919	910	927	973	1137	1260	1329	1411	1497	1572	1635
	.65	680	668	846	863	863	901	1085	1186	1256	1319	1417	1478	1530
	.75	576	585	760	805	781	817	1019	1109	1181	1235	1322	1377	1411

Air delivery against shown external static pressures taken with 230V. to unit, dry coil and equipped with approved heater. For wet coil sadd .05" W.C to Ext. Static Press. measurement.  
NOTE: For 208 Volt applications, reduce airflow by 15%.





**EXPANDED PERFORMANCE DATA - PAPC48GA**

IDB*		CFM		Outdoor Ambient Temperature - Degrees F. Dry Bulb																																																																								
				65				75				85				95				105				115																																																				
				Entering Indoor Temperature - Degrees F. Dry Bulb																																																																								
70	1595	MBh	59	63	67	71	59	63	67	71	59	63	67	71	59	63	67	71	59	63	67	71	59	63	67	71	59	63	67	71																																														
		70	1595	MBh	43.3	47	50.9	-	41.9	45.4	49.2	-	40.7	43.7	47.4	-	38.7	41.9	45.4	-	37	40.1	43.5	-	35.2	38.2	41.6	-	S/T	0.77	0.59	0.43	-	0.79	0.6	0.43	-	0.79	0.6	0.43	-	0.81	0.61	0.43	-	0.83	0.62	0.43	-	0.84	0.63	0.43	-	kW	3.52	3.58	3.64	-	3.83	3.88	3.95	-	4.24	4.24	4.3	-	4.58	4.64	4.71	-	5.02	5.11	5.17	-	5.53	5.64
70	1450	MBh	43.1	46.7	50.6	-	41.7	45.2	49	-	40.2	43.5	47.1	-	38.6	41.6	45.3	-	36.9	40	43.4	-	35.2	38.2	41.5	-	S/T	0.76	0.59	0.43	-	0.77	0.59	0.43	-	0.78	0.59	0.43	-	0.79	0.6	0.43	-	0.8	0.61	0.44	-	0.82	0.61	0.44	-	kW	3.36	3.41	3.47	-	3.66	3.72	3.78	-	4.02	4.07	4.13	-	4.42	4.46	4.54	-	4.88	4.94	5	-	5.39	5.47	5.53	-
		70	1305	MBh	42.7	46.2	49.9	-	41.3	44.8	48.4	-	39.9	43.1	46.7	-	38.3	41.4	44.9	-	36.7	39.7	43.1	-	35.4	38	41.2	-	S/T	0.74	0.58	0.44	-	0.75	0.58	0.44	-	0.76	0.59	0.44	-	0.77	0.59	0.44	-	0.78	0.6	0.44	-	0.79	0.6	0.44	-	kW	3.22	3.27	3.32	-	3.52	3.57	3.63	-	3.88	3.93	3.98	-	4.28	4.33	4.39	-	4.73	4.79	4.85	-	5.13	5.32
75	1595			MBh	43.6	46.8	50.8	54.9	42.3	45.3	49.1	53.1	40.8	43.5	47.2	51.1	39.6	41.8	45.3	49	37.7	40	43.3	47	36.2	38.2	41.2	44.9	S/T	0.93	0.75	0.58	0.42	0.95	0.76	0.58	0.43	0.96	0.77	0.59	0.43	0.98	0.79	0.6	0.43	1	0.8	0.6	0.43	1	0.82	0.61	0.43	kW	3.43	3.58	3.64	3.7	3.73	3.89	3.95	4.01	4.07	4.24	4.3	4.37	4.53	4.65	4.71	4.78	4.88	5.1	5.18	5.25	5.37	5.62
		75	1450	MBh	43.2	46.6	50.4	54.5	41.9	45.1	48.8	52.8	40.7	43.4	47	50.9	38.9	41.7	45.1	48.9	37.4	39.9	43.2	46.9	35.7	38.1	41.3	44.8	S/T	0.91	0.73	0.57	0.43	0.92	0.74	0.57	0.43	0.94	0.75	0.58	0.43	0.95	0.76	0.59	0.43	0.97	0.78	0.59	0.43	0.98	0.79	0.6	0.43	kW	3.31	3.42	3.47	3.53	3.6	3.72	3.78	3.84	4.02	4.07	4.13	4.2	4.34	4.48	4.54	4.61	4.78	4.94	5	5.08	5.28	5.47
75	1305			MBh	42.8	46.1	49.8	53.9	41.4	44.7	48.3	52.2	40	43	46.6	50.4	38.4	41.4	44.8	48.5	36.9	39.6	43	46.6	35.3	37.9	41.1	44.6	S/T	0.88	0.71	0.56	0.43	0.89	0.72	0.56	0.43	0.91	0.73	0.57	0.43	0.92	0.74	0.58	0.43	0.94	0.75	0.58	0.43	0.96	0.77	0.59	0.43	kW	3.18	3.27	3.32	3.38	3.49	3.58	3.63	3.69	3.84	3.93	3.99	4.04	4.23	4.33	4.39	4.46	4.68	4.79	4.86	4.92	5.19	5.32
		80	1595	MBh	45.5	47	50.6	54.7	44.3	45.5	48.9	52.9	43.3	43.9	47	50.9	41.6	42.2	45.1	48.9	40.4	40.5	43.2	46.8	38.7	38.8	41.3	44.7	S/T	1	0.9	0.72	0.56	1	0.91	0.73	0.57	1	0.93	0.75	0.57	1	0.95	0.76	0.58	1	0.96	0.78	0.59	1	0.98	0.79	0.6	kW	3.3	3.51	3.65	3.71	3.61	3.81	3.95	4.02	4.04	4.15	4.31	4.37	4.38	4.54	4.72	4.78	4.79	4.98	5.18	5.25	5.38	5.49
80	1450			MBh	44.4	46.6	50.3	54.4	43.3	45.1	48.7	52.6	42.1	43.5	46.8	50.7	40.8	41.9	45	48.7	39.3	40.2	43.1	46.7	37.9	38.5	41.2	44.7	S/T	1	0.87	0.7	0.55	1	0.89	0.71	0.56	1	0.9	0.72	0.56	1	0.92	0.74	0.57	1	0.94	0.75	0.58	1	0.95	0.77	0.59	kW	3.17	3.38	3.48	3.53	3.48	3.68	3.78	3.84	3.85	4.02	4.14	4.2	4.26	4.42	4.54	4.61	4.72	4.86	5.01	5.08	5.25	5.38
		80	1305	MBh	43.3	46	49.7	53.8	42.1	44.6	48.2	52.1	41	43	46.5	50.2	39.7	41.4	44.7	48.4	38.6	39.7	42.8	46.4	37	38	41	44.4	S/T	1	0.85	0.69	0.54	1	0.86	0.69	0.55	1	0.87	0.7	0.55	1	0.89	0.71	0.56	1	0.9	0.73	0.57	1	0.92	0.74	0.57	kW	3.11	3.25	3.32	3.38	3.41	3.55	3.63	3.69	3.74	3.92	3.99	4.04	4.14	4.3	4.39	4.46	4.55	4.75	4.86	4.93	5.13	5.27
85	1595			MBh	48.1	48.1	50.6	54.5	46.9	46.9	49	52.7	45.6	45.6	47.2	50.7	44.1	44.2	45.4	48.7	42.6	42.7	43.5	46.6	41.1	41.1	41.7	44.5	S/T	1	1	0.87	0.7	1	1	0.88	0.71	1	1	0.9	0.72	1	1	0.92	0.73	1	1	0.93	0.75	1	1	0.95	0.77	kW	3.34	3.38	3.6	3.71	3.65	3.65	3.89	4.02	4.01	4.01	4.23	4.38	4.42	4.43	4.63	4.79	4.89	4.89	5.08	5.25	5.43	5.43
		85	1450	MBh	47	47.1	50.2	54.2	45.8	45.9	48.6	52.5	52.5	44.6	46.9	50.6	43.2	43.2	45.1	48.6	41.8	41.8	43.2	46.5	40.3	40.3	41.4	44.5	S/T	1	1	0.84	0.68	1	1	0.85	0.69	0.69	1	0.87	0.7	1	1	0.88	0.71	1	1	0.9	0.72	1	1	0.92	0.74	kW	3.21	3.29	3.45	3.54	3.52	3.58	3.75	3.85	3.84	3.91	4.1	4.2	4.29	4.3	4.5	4.61	4.76	4.77	4.95	5.08	5.3	5.3
85	1305			MBh	45.6	46.4	49.6	53.6	44.6	45.1	48.1	51.9	43.3	43.6	46.4	50.1	42.3	42.1	44.7	48.2	40.7	40.7	42.8	46.3	39.3	39.3	41	44.3	S/T	1	0.96	0.81	0.66	1	0.97	0.82	0.67	1	0.99	0.83	0.68	1	1	0.85	0.69	1	1	0.87	0.7	1	1	0.89	0.71	kW	3.1	3.2	3.32	3.38	3.41	3.49	3.62	3.69	3.77	3.83	3.97	4.05	4.24	4.22	4.37	4.46	4.64	4.66	4.83	4.93	5.18	5.19

\* Entering Indoor Temperature - Degrees F. Dry Bulb  Standard Rating

## ELECTRICAL DATA TABLE: STRIP HEATERS

HEATER MODEL	Used With	Supply Voltage	KW Rating	Nominal Heating BTUH	Supply Circuit No.	Heater Amps	Minimum Circuit Ampacity	Maximum Overcurrent Protective Device (Amps)
AMMK05AHA	PAPC24-48	240-1-60	4.8	16,382	L3 - L4	20.0	25.0	30
AMMK05AHB		208-1-60	3.6	12,287	L3 - L4	17.3	21.6	25
AMMK07AHA	PAPC24-48	240-1-60	7.5	25,598	L3-L4	31.2	39.0	45
AMMK07AHB		208-1-60	5.6	19,113	L3-L4	26.9	33.6	40
AMMK10AHA	PAPC24-48	240-1-60	9.6	32,765	L3 - L4	40.0	50.0	60
AMMK10AHB		208-1-60	7.2	24,574	L5 - L6	34.6	43.3	50
AMMK15AHB	PAPC30-48	240-1-60	14.4	49,147	L3 - L4 L5 - L6	40.0 20.0	50.0 25.0	60 30
		208-1-60	10.8	36,860	L3 - L4 L5 - L6	34.6 17.3	43.3 21.6	50 25
AMMK20AHB	PAPC30-48	240-1-60	19.2	65,530	L3 - L4 L5 - L6	40.0 40.0	50.0 50.0	60 60
		208-1-60	14.4	49,147	L3 - L4 L5 - L6	34.6 34.6	43.3 43.3	50 50

## PERFORMANCE DATA: ELECTRIC HEAT ACCESSORY

Heater Model	Use With	Supply Voltage	KW Rating	Total Heating BTUH	*Temperature Rise °F @ CFM								
					600	800	1000	1200	1400	1600	1800	2000	2200
AMMK05AHA	PAPC24 - 48	240-1-60	4.8	16,832	25.3	19.0	15.2	12.6	10.8	9.5	8.4	7.6	---
AMMK05AHB		208-1-60	3.6	12,287	19.0	14.2	11.4	9.5	8.1	7.1	6.3	5.7	---
AMMK07AHA	PAPC24 - 48	240-1-60	7.5	25,598	39.5	29.6	23.7	19.8	16.9	14.8	13.2	11.9	10.8
AMMK07AHB		208-1-60	5.6	19,113	29.5	22.1	17.7	14.7	12.6	11.1	9.8	8.8	8.0
AMMK10AHA	PAPC24 - 48	240-1-60	9.6	32,765	50.6	37.9	30.3	25.3	21.7	19.0	16.9	15.2	13.8
AMMK10AHB		208-1-60	7.2	24,574	37.9	28.4	22.8	19.0	16.3	14.2	12.6	11.4	10.3
AMMK15AHB *	PAPC30 - 48	240-1-60	14.4	49,147	---	56.9	45.5	37.9	32.5	28.4	25.3	22.8	20.7
		208-1-60	10.8	36,860	56.9	42.7	34.1	28.4	24.4	21.3	19.0	17.1	15.5
AMMK20AHB **	PAPC30 - 48	240-1-60	19.2	65,530	---	---	---	50.6	43.3	37.9	33.7	30.3	27.6
		208-1-60	14.4	49,147	---	56.9	45.5	37.9	32.5	28.4	25.3	22.8	20.7

\* 15 KW HEATER NOT TO BE OPERATED ON LOW BLOWER SPEED TAP FOR PAPC30.

\*\* 20 KW HEATER NOT TO BE OPERATED ON LOW OR MED. LOW BLOWER SPEED TAP FOR PAPC36 & 42.

## SERIES ACCESSORIES

Model Number	Accessory Description
<b>NACA001DK</b>	<b>BASIC 7 FOOT DUCT KIT:</b> Includes (1) 12" x 7" & (1) 14" x 5" flex duct with 4" collars on both ends; (2) 12" Duct Clamps-Gear Drive; (2) 14" Duct Clamps-Gear Drive; (1) 12" x 20" Insulated Steel Return Air Plenum; (1) 12" x 20" Walk-On Return Air Grille; (1) 12" Dovetail Duct Adapter; (1) Air Filter 18-1/2" x 20" x 1".
<b>NACA002DK</b>	<b>DOUBLE SUPPLY DUCT KIT:</b> Includes (1) 10" x 14" Long Flex Duct with 4" Collars on both Ends; (1) Insulated Steel Wye -12" x 10" x 10"; (4) 10" Duct Clamps; (2) 10" Dovetail Duct Adapters; (1) Installation Instructions.
<b>NACA003DK</b>	<b>BASIC 10 FOOT DUCT KIT:</b> Includes (1) 12" x 10' Flex Duct with 4" Collars on Both Ends; (1) 14" x 10' Flex Duct With 4" Collars on Both Ends; (2) 12" Duct Clamps - Gear Drive; (2) 14" Duct Clamps - Gear Drive; (1) 12" Dovetail Duct Adapter; (1) 12" x 20" Insulated Steel Return Air Plenum; (1) 12" x 20" Walk-On Return Air Grille; (1) Air Filter 18-1/2" x 20" x 1".
<b>NAXA001DK</b>	<b>DOUBLE RETURN DUCT KIT:</b> Includes (1) 14" x 14" Flex Duct with 4" Collars on both Ends; (4) 14" Duct Clamps; (1) 12" x 20" Insulated Steel Return Air Plenum; (1) 12" x 20" Walk-On Return Air Grille; (1) 18" x 18" x 1 Permanent Air Filter; (1) 14" x 14" x 14" Insulated Steel Wye

<b>AMMK05AHB</b>	4.8 KW STRIP HEATER <b>WITH BREAKER.</b> (* ORDER UNIT BREAKER SEPERATELY)
<b>AMMK07AHB</b>	7.5 KW STRIP HEATER <b>WITH BREAKER.</b> (* ORDER UNIT BREAKER SEPERATELY)
<b>AMMK10AHB</b>	9.6 KW STRIP HEATER <b>WITH BREAKER.</b> (* ORDER UNIT BREAKER SEPERATELY)
<b>AMMK15AHB</b>	14.4 KW STRIP HEATER <b>WITH BREAKER.</b> (* ORDER UNIT BREAKER SEPERATELY)
<b>AMMK20AHB</b>	19.2 KW STRIP HEATER <b>WITH BREAKER.</b> (* ORDER UNIT BREAKER SEPERATELY)
<b>AMMK05AHA</b>	4.8 KW STRIP HEATER <b>PIGTAIL CONNECTION ONLY, NO BREAKER.</b>
<b>AMMK07AHA</b>	7.5 KW STRIP HEATER <b>PIGTAIL CONNECTION ONLY, NO BREAKER.</b>
<b>AMMK10AHA</b>	9.6 KW STRIP HEATER <b>PIGTAIL CONNECTION ONLY, NO BREAKER.</b>

SPECIFICATIONS SUBJECT TO CHANGE WITHOUT NOTICE

**SERIES ACCESSORIES**

**UNIT CIRCUIT BREAKERS - (REQUIRED WITH BREAKER STYLE HEATER FOR UNIT DISCONNECT FEATURE ORDER FROM SERVICE PARTS**

Breaker Amps	Part Number	Application
20	1082007	N/A
25	1082008	2 TON
30	1082009	2 1/2 TON
35	1082010	3 TON
40	1082011	3 TON
45	1082012	3 1/2 TON
50	1082013	3 1/2 - 4 TON
60	1082014	4 TON
60 Switch	1082042	Fits All - Disconnect Switch Only (No Over Current Protection)
<b>AMM001DSA</b>	<b>DISCONNECT SWITCH KIT (includes 60A switch &amp; rain shield) BREAKER FOR UNIT ONLY. FOR "NO HEAT" or PIGTAIL STYLE HEATER APPLICATION ONLY.</b>	

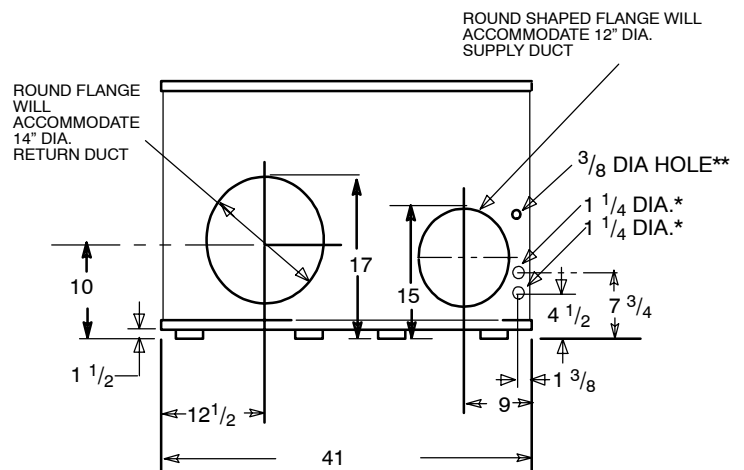
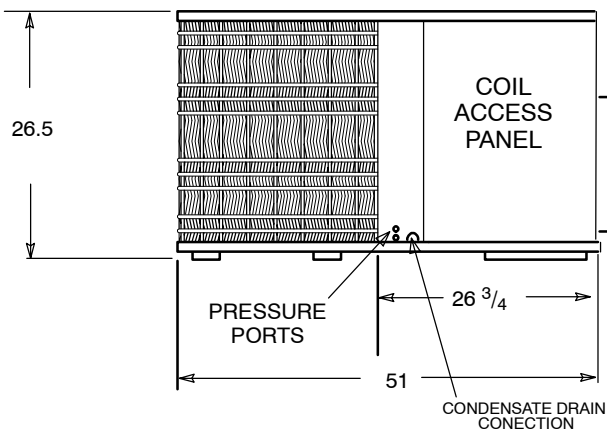
**COOLING MODEL NUMBER IDENTIFICATION GUIDE:**

<b>MODEL NUMBER</b>	P	A	P	C	24	G	A	<b>SALES CODE</b>
<b>PRODUCT FAMILY</b>	P - PACKAGE							<b>ELECTRICAL CHARACTERISTICS</b>
<b>PRODUCT TYPE</b>	A - A/C Y - HEAT PUMP							<b>CODE PHASE CYCLE VOLTS</b>
<b>FEATURE CODE</b>								G 1 60 208/230-240
								<b>NOMINAL MBTUH</b>
								24 = 24,000 BTUH
								<b>SERIES</b>
								A - Standard C - 12 Ultra High SEER

**UNIT DIMENSIONS**

**NOTE: DUCT COLLARS ATTACHED TO SUPPLY AND RETURN MUST BE REVERSED AT INSTALLATION.**

ALL DIMENSIONS IN INCHES



\* ELECTRICAL ACCESS FOR LINE VOLTAGE POWER SUPPLY-ONE FOR UNIT, ONE FOR HEATER  
 \*\* FOR LOW VOLTAGE WIRING