



High Efficiency Single-Package Gas/Electric Units

Models PGH 3 to 10 Tons

Job Name: _____ Purchaser: _____
 Location: _____ Order No: _____
 Engineer: _____
 Submitted To: _____ For: Reference Approval
 Submitted By: _____ Date: _____

UNIT DESIGNATION

Schedule No: _____

Model No: _____



DESCRIPTION

Units are low profile, one-piece gas heating, electric cooling units that are pre-wired, tested and charged at the factory. The units are easily field convertible for supply and return openings and are intended for installation on an accessory curb (ordered separately), or for slab mounting (for horizontal duct connections). Units are designed to accept a field-installed economizer, enthalpy control, manual or motorized outside air damper and/or roof curb. Units are tested and certified by ARI and certified by UL and UL, Canada.

FEATURES

- SEERs up to 13.0 and EER up to 11.6
- Sound levels as low as 76 dB
- Up to 82% AFUE
- 3 to 6 ton have single-stage cooling and 7.5 to 10 tons have two-stage cooling capacity control
- Independent circuit with internal line break and overload protection, self-lubricating with internal discharge muffler.
- Scroll compressors standard with anti-cycle protection
- Adjustable belt drive evaporator fan standard, with permanently lubricated motors
- Filter door with easy access and maintenance requiring no tools to replace standard 2 inch filters
- Slide-out blower motor assembly
- Electrical power thru-the-bottom or thru-the-curb connections
- Isolated and insulated compressor compartment
- Cleanable foil-faced insulation throughout the entire unit airstream
- Dedicated horizontal supply/return available for PGH units
- Refrigeration circuit contains a filter drier to trap dirt and particles
- Totally enclosed, thermally protected, shaft down condenser motors
- Cleanable evaporator and condenser coils
- Outdoor ambient cooling operation from 25 F to 125 F ambient
- Copper tube aluminum fin coils
- Induced draft combustion system used for reliability and safety
- Wiring is colored and labeled throughout the unit
- Pre-painted, insulated cabinet with primed inner panels, certified 500-hour salt spray test and non-corrosive screws
- Refrigerant access valves that allow system readings without creating air bypass
- 24 volt control system with resettable circuit breaker
- Non-corrosive condensate pan with self-draining design with both bottom and side drain connections
- Compressor protection includes high pressure and freeze protection switches
- Direct spark ignition
- Reliable IGC (integrated gas unit controller) provides system evaluation and trouble shooting via onboard LED indicator
- Single point electrical and gas connection
- Aluminized tubular heat exchangers (3 - 5 ton single and three phase models available with Low NOx unit with 409 stainless heat exchangers)
- Five year warranty on all compressors
- Ten-year warranty on heat exchangers
- One year full product warranty

PERFORMANCE DATA

COOLING PERFORMANCE

Total Capacity _____ BTUH
Sensible Capacity _____ BTUH

Ambient Design _____ Deg F DB/WB
Evaporator Entering Air _____ Deg F DB/WB
Power Input Requirement (Less Blower Motor) _____ kW
SEER _____
EER _____

HEATING PERFORMANCE

Stage 1 _____ BTUH
Stage 2 _____ BTUH
Heating Output Capacity _____ BTUH
Curb Weight _____ LBS
Total Unit Weight _____ LBS

SUPPLY AIR PERFORMANCE - BLOWER

Airflow _____ CFM
External Static Pressure _____ IWG
Blower Speed
HI MED HI MED LO LO
IFM _____ HP
OFM _____ HP

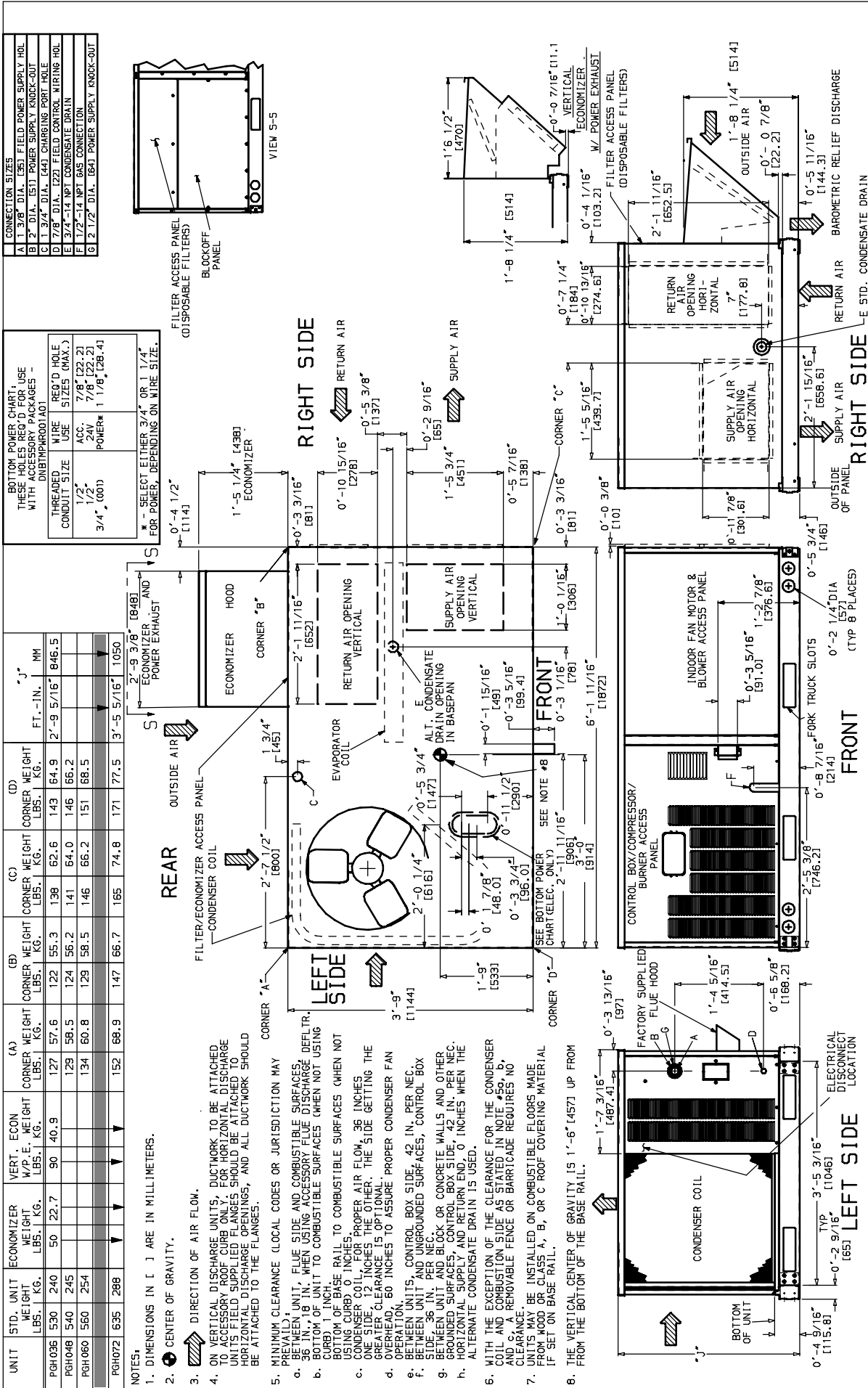
ELECTRICAL DATA

Power Supply _____ (Volts/Phase/Hertz)
Total Unit Ampacity _____ Amps
Maximum Overcurrent Protection Device _____
Fuses _____ Amps
Circuit Breaker _____

OPTIONS AND ACCESSORIES

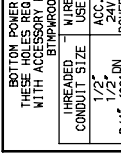
FACTORY INSTALLED OPTIONS		
		NOTES
25% Manual Outside Air Damper		
Copper/Copper Coils - Outdoor		
Economizer, Vertical Return		
Field Powered GFCI Convenience Outlet		
High-Static Indoor Fan Motor and Drive		
Non-Fused Disconnect		
Smoke Detector, Supply Air		

FIELD INSTALLED ACCESSORIES		
		NOTES
CO2 Sensor (Return Air)		
Compressor Cycle Delay		
Economizers - Vertical or Horizontal		
Filter Access Panels		
High Altitude Natural Gas Kit		
Low Ambient Control Kit		
Manual Outdoor-Air Damper (25% Open)		
Natural to LP Conversion Kits		
Outdoor Hail Guard		
Outdoor Coil Guard		
Phase Motor Control		
Power Exhaust - Vertical or Horizontal		
Roof Curb (14 inch Height)		
Roof Curb (24 inch Height)		
Outdoor Air Dry Bulb Temp Sensor		
Return Air Dry Bulb Temp Sensor		
Return Air Enthalpy Sensor		
Smoke Detector Return		
Smoke Detector Supply		
Smoke Detector Supply & Return		
Thermostat and Subbase		
Thru-the-base Power Kit		
Winter Start Kit		



Base Unit Dimensions - PGH090-120

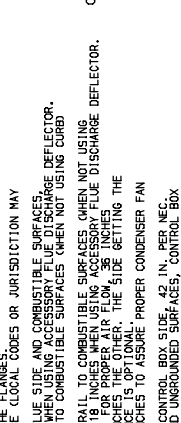
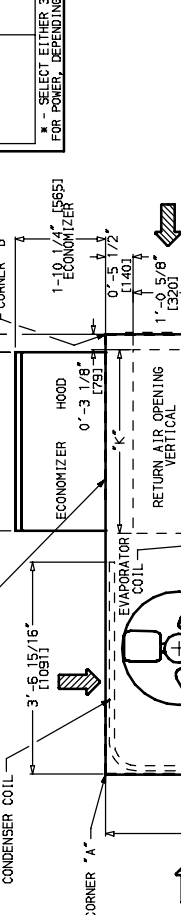
UNIT	SID. UNIT WEIGHT LBS., KG.	ECONOMIZER WEIGHT LBS., KG.	VERT. ECON. W/P.E. WEIGHT LBS., KG.	CORNER WEIGHT (A)		CORNER WEIGHT (B)		CORNER WEIGHT (C)		CORNER WEIGHT (D)		H	J	K	L							
				LBS.	KG.	LBS.	KG.	LBS.	KG.	LBS.	KG.					FT.-IN.	MM	FT.-IN.	MM			
PGH090	870	395	75	34.1	145	65.9	189	86	161	73	239	109	280	127	3'-5 5/16"	1050	2'-9 11/16"	856	2'-2 7/16"	672	2'-10 7/16"	875
PGH102	1015	460	223	225	101	188	87	285	129	333	151	4'-1 5/16"	1253	3'-0 3/8"	924	2'-10 7/16"	875	875	875	875		
PGH120	1035	469	225	225	102	192	87	285	129	333	151	4'-1 5/16"	1253	3'-0 3/8"	924	2'-10 7/16"	875	875	875	875		



BOTTOM POWER CHART
 THESE HOLES REQ'D FOR USE WITH ACCESSORY PACKAGES -

THREAD	WIRE CONDUIT SIZE	REG'D HOLE USE SIZES (MAX.)
1/2"	3/4" (001 IN)	7/8" (22.2)
3/4"	1" (002 IN)	1 1/8" (28.6)
1"	1 1/4" (003 IN)	1 5/8" (38.1)

* - SELECT EITHER 3/4" OR 1 1/4" FOR POWER, DEPENDING ON WIRE SIZE.



- NOTES:
 1. DIMENSIONS IN [] ARE IN MILLIMETERS.
 2. CENTER OF GRAVITY.
 3. DIRECTION OF AIR FLOW.
 4. ON VERTICAL DISCHARGE UNITS, DUCTWORK TO BE ATTACHED TO ACCESSORY ROOF CURB ONLY. FOR HORIZONTAL DISCHARGE UNITS FIELD SUPPLIED FLANGES SHOULD BE ATTACHED TO BE ATTACHED TO THE FLANGES.
 5. MINIMUM CLEARANCE (LOCAL CODES OR JURISDICTION MAY VARY):
 a. BETWEEN UNIT, FLUE SIDE AND COMBUSTIBLE SURFACES, 18 INCHES, 18" WHEN USING ACCESSORY FLUE DISCHARGE DEFLECTOR.
 b. BOTTOM OF UNIT TO COMBUSTIBLE SURFACES WHEN NOT USING CURB, 0 INCHES 18 INCHES WHEN USING ACCESSORY FLUE DISCHARGE DEFLECTOR.
 c. CONDENSER COIL TO TOP OF UNIT, 4 INCHES TO TOP OF CONDENSER COIL TO TOP OF UNIT, 4 INCHES TO TOP OF CONDENSER COIL TO TOP OF UNIT, 4 INCHES TO TOP OF CONDENSER COIL TO TOP OF UNIT.
 d. OVERHEAD, 60 INCHES TO ASSURE PROPER CONDENSER FAN OPERATION.
 e. BETWEEN UNITS, CONTROL BOX SIDE, 42 IN. PER NEC.
 f. BETWEEN UNIT AND UNSURROUNDED SURFACES, CONTROL BOX SIDE, 18 IN. PER NEC.
 g. BETWEEN UNIT AND BLOCK OR CONCRETE WALLS AND OTHER UNSURROUNDED SURFACES, CONTROL BOX SIDE, 42 IN. PER NEC.
 h. HORIZONTAL SUPPLY AND RETURN END, 0 INCHES WHEN THE ALTERNATE CONDENSATE DRAIN IS USED.
 i. THE CONDENSATE DRAIN IS USED.
 j. THE CONDENSATE DRAIN IS USED.
 k. THE CONDENSATE DRAIN IS USED.
 l. A REMOVABLE FENCE OR BARRICADE REQUIRES NO CLEARANCE.
 m. UNITS MAY BE INSTALLED ON COMBUSTIBLE FLOOR WAREHOUSE IF SET ON BASE RAIL "A", "B", OR "C GROUP COVERING MATERIAL.
 n. THE VERTICAL CENTER OF GRAVITY IS 1'-7" (483) FOR 090/081 AND 102/103, 594 (FOR 20/21 AND 150/151) UP FROM THE BOTTOM OF THE BASE RAIL.

CONNECTION SIZES FIELD POWER SUPPLY HOLE

A 3/4" DIA. 1/2" FIELD POWER SUPPLY HOLE
 B 3/4" DIA. 1/2" FIELD POWER SUPPLY HOLE
 C 1/2" DIA. 1/2" FIELD POWER SUPPLY HOLE
 D 1/2" DIA. 1/2" FIELD POWER SUPPLY HOLE
 E 3/4" DIA. 1/2" FIELD POWER SUPPLY HOLE
 F 1/2" DIA. 1/2" FIELD POWER SUPPLY HOLE
 G 1/2" DIA. 1/2" FIELD POWER SUPPLY HOLE

CONNECTION SIZES FIELD POWER SUPPLY HOLE

A 3/4" DIA. 1/2" FIELD POWER SUPPLY HOLE
 B 3/4" DIA. 1/2" FIELD POWER SUPPLY HOLE
 C 1/2" DIA. 1/2" FIELD POWER SUPPLY HOLE
 D 1/2" DIA. 1/2" FIELD POWER SUPPLY HOLE
 E 3/4" DIA. 1/2" FIELD POWER SUPPLY HOLE
 F 1/2" DIA. 1/2" FIELD POWER SUPPLY HOLE
 G 1/2" DIA. 1/2" FIELD POWER SUPPLY HOLE

CONNECTION SIZES FIELD POWER SUPPLY HOLE

A 3/4" DIA. 1/2" FIELD POWER SUPPLY HOLE
 B 3/4" DIA. 1/2" FIELD POWER SUPPLY HOLE
 C 1/2" DIA. 1/2" FIELD POWER SUPPLY HOLE
 D 1/2" DIA. 1/2" FIELD POWER SUPPLY HOLE
 E 3/4" DIA. 1/2" FIELD POWER SUPPLY HOLE
 F 1/2" DIA. 1/2" FIELD POWER SUPPLY HOLE
 G 1/2" DIA. 1/2" FIELD POWER SUPPLY HOLE

CONNECTION SIZES FIELD POWER SUPPLY HOLE

A 3/4" DIA. 1/2" FIELD POWER SUPPLY HOLE
 B 3/4" DIA. 1/2" FIELD POWER SUPPLY HOLE
 C 1/2" DIA. 1/2" FIELD POWER SUPPLY HOLE
 D 1/2" DIA. 1/2" FIELD POWER SUPPLY HOLE
 E 3/4" DIA. 1/2" FIELD POWER SUPPLY HOLE
 F 1/2" DIA. 1/2" FIELD POWER SUPPLY HOLE
 G 1/2" DIA. 1/2" FIELD POWER SUPPLY HOLE