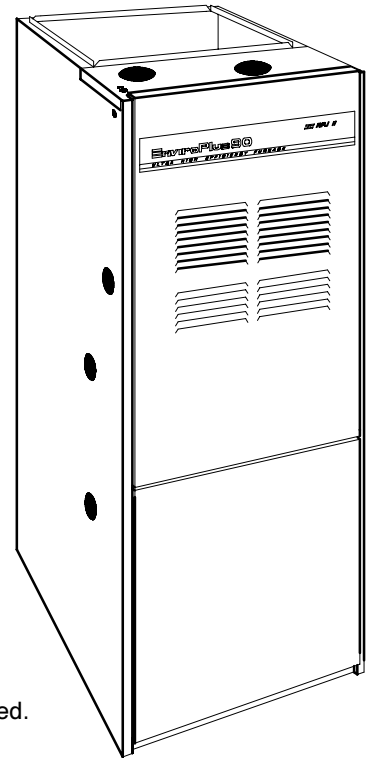




Standard Equipment

- 92% AFUE efficiency range.
- Hot surface pilot ignition device.
- Induced combustion blower.
- Adjustable electronic fan control with optional low speed continuous fan feature provides maximum comfort.
- Stainless steel rigid pressed-joint serpentine design primary heat exchanger.
- Stainless steel secondary heat exchanger.
- Limited lifetime warranty on heat exchangers.
- Dual Certified for 100% outside air for combustion using two pipe or single vent pipe using inside air for combustion:
 - **Direct Vent** - using 100% outside combustion air (two pipes). Prevents exposure of furnace to corrosive indoor chemicals.
 - **Atmospheric Vent** - (Single pipe) using uncontaminated indoor combustion air to reduce installation costs.
- Can be vented with standard Schedule 40 PVC, CPVC, Cellular core PVC, ABS or SDR-26 pipe.
- Vent pipe can be run horizontally or vertically.
- In-shot monoport, low NOx burners.
- Multispeed, prelubricated PSC motors. Dynamically balanced.
- Resilient mounted motors to reduce vibration and noise.
- Entire blower assembly mounted on rails for easy service.
- 40VA transformer.
- Color coded wiring harness.
- Terminal board allows easy selection of motor speeds.
- Electronic air cleaner and humidifier connections provided.
- Factory pre-wired.
- Architectural stone prepainted cabinet.
- Fully insulated cabinet.
- Flame sensor constantly monitors flame. Provides 100% gas shut off if flame is not sensed.
- Thermally activated flame rollout switch.
- Redundant gas valve for quiet, smooth, and safe ignition.
- High temperature limit control prevents overheating.
- Flue blockage pressure switch shuts down furnace if flue is restricted.
- Blower door interlock switch prevents furnace operation if door is removed.
- May be installed as upflow as shipped or horizontal/left with application of a pressure switch kit. (See accessory page)
- Compact 48" design.
- Built-in condensate drain trap (upflow application) saves on installation time and expense.
- Gas line entrance from left or right.
- Twinning kit available to operate two furnaces in tandem.
- Natural to LP Gas conversion kits available.
- Electrical entrance from left or right.
- 0" clearances on sides and back.
- Filter and filter rack standard.
- Concentric vent termination kit available.



Warranty (Limited)

Standard warranty extended to the original purchaser (homeowner), is a limited lifetime parts only warranty on the primary and secondary heat exchanger and 20 years to any subsequent owners. All other furnace parts are covered by a five year limited parts only warranty. Limited warranties applicable to the equipment are set forth in the manufacturer's published warranty statement, which is available from our office (address on this literature) and from local distributors for our product in your area.



Design Certified
by A.G.A.



MODEL		GNK050N12A	GNK075N14A	GNK100N16A	GNK125N20A
Electrical Specifications	Voltage/Hertz/Phase	115/60/1			
	Min./Max. Voltage	97/132	97/132	97/132	97/132
	F.L.A.	5.3	7.5	9.2	12.0
	Max. Overcurrent Protection	15	15	15	15
Heating Performance Data ¹	Input Btuh	50,000	75,000	100,000	125,000
	Output Btuh	45,500	67,500	90,000	113,125
	AFUE % (I.C.S.)	92.0	92.0	92.0	92.0
Optional ² Heating Data	Alternate Input Btuh	40,000	60,000	80,000	100,000
	Alternate Output Btuh	36,400	54,000	72,000	90,500
Motor and Blower Information	Motor Type/No. of Speeds	PSC Direct Drive / 4			
	Motor HP/RPM	¹ / ₃ - 1050	¹ / ₂ - 1050	¹ / ₂ - 1050	³ / ₄ - 950
	Motor FLA/RLA ³	5.3/12.4	7.5/13.7	9.2/22.0	12.0/18.3
	Blower Type/No.	Centrifugal / 1			
	Blower Wheel Size (D x W)	10 x 8	10 x 8	10 x 10	11.8 x 10.6
Air Delivery ⁴	High Speed 0.5" ESP (CFM)	1291	1371	1638	2049
	Low Speed 0.5" ESP (CFM)	660	781	878	1364
	Temp. Rise Range (Deg. F.)	40 - 70	40 - 70	40 - 70	45 - 75
Primary Heat Exchanger	Type	RPJII Serpentine Design			
	Material of Construction	409 Stainless Steel			
	No. of Cells	2	3	4	5
Secondary Heat Exchanger (Coil)	Material of Construction	Stainless Steel Tube / Aluminum Fin			
	No. of Rows	2	2	2	2
	Fins per Inch	6	6	6	6
Piping Information	Gas Connection (inch)	¹ / ₂	¹ / ₂	¹ / ₂	¹ / ₂
	Condensate Connection (inch)	¹ / ₂	¹ / ₂	¹ / ₂	¹ / ₂
Ignition System	Type	Electronic Ignition			
	Ignition Sequence	Continuous Retry			
Burner Information	Material of Construction	Aluminized Steel			
	Burner Type	Inshot			
	No. of Burners	2	3	4	5
General Information	Air Filter Type	Permanent			
	Air Filter Size/Qty. ⁵	16 x 25 x 1 (1)	16 x 25 x 1 (1)	16 x 25 x 1 (1)	16 x 25 x 1 (2)
	Shipping Weight (lbs.)	165	180	201	242

¹ Capacity and efficiency ratings in accordance with D.O.E. test procedure.

⁴ Refer to blower chart for complete blower information.

² When used with alternate input accessories.

⁵ Filter supplied with unit is rated at 600 fpm. See installation instructions.

³ Full load amps depend on installation conditions and heating or cooling operation.

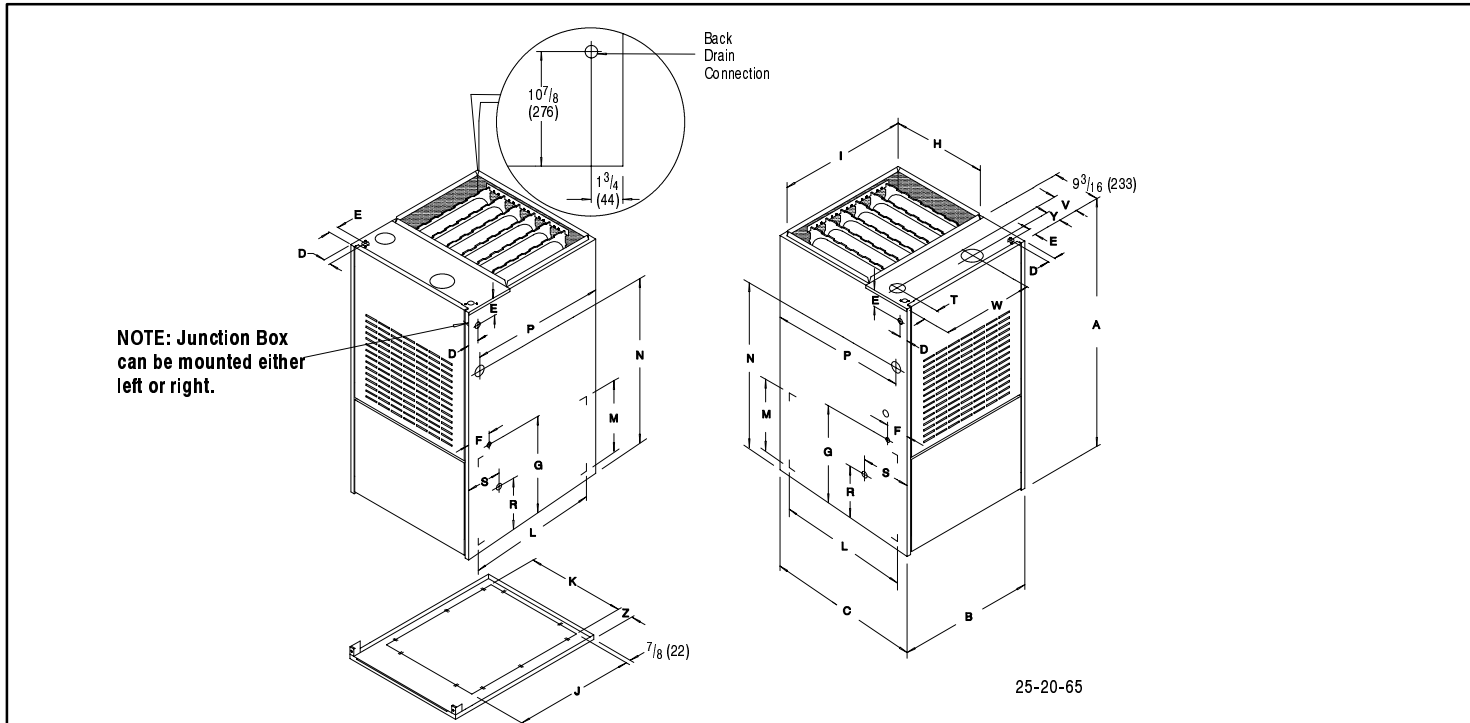
AIRFLOW DATA

Model Numbers		.10 ESP IN.	.20 ESP IN.	.30 ESP IN.	.40 ESP IN.	.50 ESP IN.	.60 ESP IN.	.70 ESP IN.
GNK050N12A	Low	718	719	714	692	660	615	563
	Medium Low	840	838	837	819	791	752	683
	Medium High	1109	1094	1086	1063	1027	986	934
	High	1473	1431	1396	1349	1291	1222	1141
GNK075N14A	Low	778	786	790	788	781	765	743
	Medium Low	984	1003	1003	1001	982	962	923
	Medium High	1263	1249	1244	1215	1186	1146	1094
GNK100N16A	Low	954	950	946	915	878	830	778
	Medium Low	1312	1292	1265	1231	1175	1118	1020
	Medium High	1698	1645	1596	1530	1455	1362	1241
GNK125N20A	High	1925	1853	1780	1708	1638	1546	1435
	Low	1463	1429	1417	1389	1364	1339	1299
	Medium Low	1650	1635	1614	1579	1556	1513	1470
	Medium High	1879	1859	1838	1806	1773	1725	1668
GNK125N20A	High	2214	2154	2152	2106	2049	1981	1903

MODEL NUMBER IDENTIFICATION GUIDE

MODEL NUMBER	G	N	K	075	N	14	A
PRODUCT GROUP							MARKETING REVISION
G = Gas Furnace							NOMINAL AIR FLOW (CFM/Tons)
FUEL							12 = 1200/3 Tons 20 = 2000/5 Tons
U = Upflow C = Downflow/Horizontal							14 = 1400/3.5 Tons
D = Downflow							16 = 1600/4 Tons
N = Upflow/Horizontal							N = 115V-1Ph Nat Gas
SERIES							NOMINAL INPUT MBTUH

DIMENSIONS



Unit Capacity	Cabinet			Electrical Connections						Supply Air		Return Air			
				Top		Left/Right Side		Low Volt				Bottom		Side	
	A	B	C	D	E	D	E	F	G	H	I	J	K	L	M
50 & 75,000	48	19 1/8	28 1/2	1 1/2	1 1/2	1 5/8	2 1/2	4 1/2	17 5/16	18 1/2	17 5/8	23 1/8	14 3/4	22 1/2	14 1/2
100,000	48	22 3/4	28 1/2	1 1/2	1 1/2	1 5/8	2 1/2	4 1/2	17 5/16	18 1/2	21 1/4	23 1/8	18 3/4	22 1/2	14 1/2
125,000	48	26 3/8	28 1/2	1 1/2	1 1/2	1 5/8	2 1/2	4 1/2	17 5/16	18 1/2	24-7/8	23 1/8	23 1/2	22 1/2	14 1/2

Unit Capacity	Gas Connections				Drain Connections				Supply Air		Return Air		
	Right Side		Left Side		R	Right Side	Left Side	Bottom					
	N	P	N	P		S	S	T	V	W	Y	Z	
50 & 75,000	32 1/2	23 7/8	32 1/2	26 1/16	10 7/8	2 3/4	6 1/2	2 11/16	4 13/16	12 7/8	2 11/16	2 1/8	
100,000	32 1/2	23 7/8	32 1/2	26 1/16	10 7/8	2 3/4	6 1/2	2 11/16	4 13/16	14 11/16	2 11/16	1 7/8	
125,000	32 1/2	23 7/8	32 1/2	26 1/16	10 7/8	2 3/4	6 1/2	2 11/16	4 13/16	18	2 11/16	1 7/16	

CONVERSION FROM INCHES TO METRIC (mm)	48" = (1219)	26 3/8" = (670)	2 1/2" = (64)	17 5/16" = (440)	24 1/8" = (632)	18" = (457)	2 11/16" = (68)
	32 1/2" = (825)	28 1/2" = (724)	10 7/8" = (276)	6 1/2" = (165)	2 11/16" = (68)	14 3/4" = (375)	1 7/8" = (48)
	19 1/8" = (486)	1 1/2" = (38)	4 1/2" = (114)	17 5/8" = (448)	4 13/16" = (122)	18 3/4" = (476)	2 1/8" = (54)
	22 3/4" = (578)	26 1/16" = (662)	2 3/4" = (70)	23 1/8" = (587)	14 11/16" = (373)	23 1/2" = (597)	14 1/2" = (368)
	23 7/8" = (606)	1 5/8" = (41)	18 1/2" = (470)	21 1/4" = (540)	12 7/8" = (327)	22 1/2" = (572)	1 7/16" = (37)

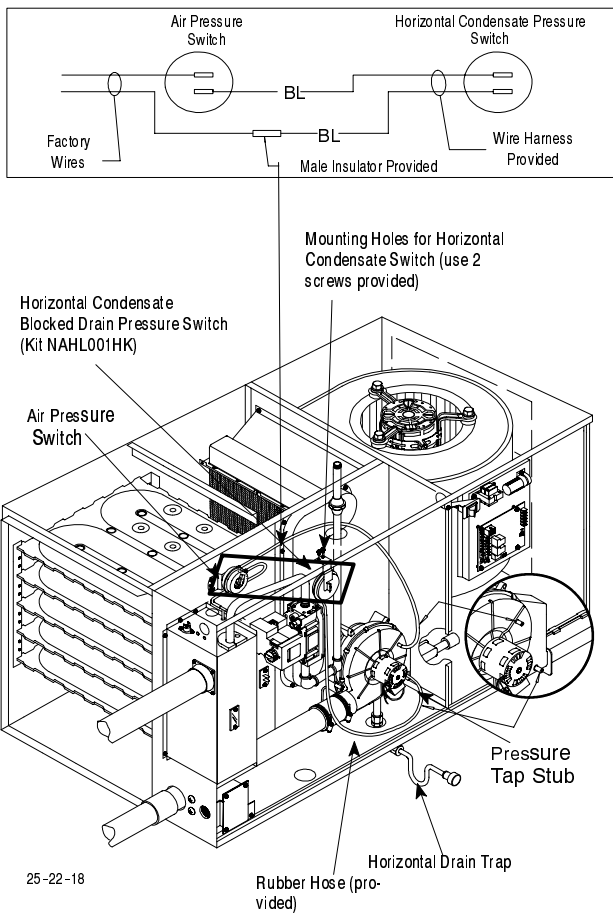
ALL DIMENSIONS IN INCHES (MM)

Accessories

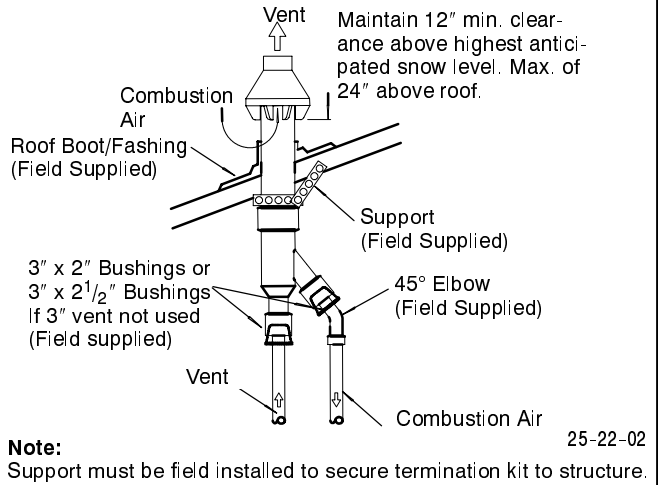
Description	Fast Parts No.	Model Number	Used With
Natural to LP Conversion Kit	* 1009509	NAHF002LP	ALL MODELS
LP to Natural Conversion Kit	* 1009510	NAHF002NG	ALL MODELS
Twinning Kit	--	NAHA003WK	ALL MODELS
Duct Standoff with Filter 20" x 25"	--	NAHA001TK	ALL MODELS
Alt. Input Kit Nat. Gas	* 1009910	NAHK001LF	ALL MODELS
Alt. Input Kit LP Gas	* 1009911	NAHK002LF	ALL MODELS
LP Low Pressure Switch Detects low line pressure. Opens at 6.5" W.C. (included in L.P. Kits)	* 1009522	NAHA001PS	ALL LP FURNACES
Horizontal Pressure Switch	* 1010672	NAHL001HK	ALL HORIZONTAL APPLICATIONS
Concentric Vent Kit	* 1011129	NAHA001CV	ALL MODELS
Bottom Return Filter Kit 20" x 25"	--	NAHA002FF	GNK100N16A
Standoff Filter Kit 20" x 25"	--	NAHA001TK	ALL MODELS

* Must be ordered from Fast Parts

NAHL001HK Typical Horizontal Condensate Pressure Switch Kit Installation



NAHA001CV Concentric Vent Kit Roof Installation



NAHA001CV Concentric Vent Kit Sidewall Attachment

