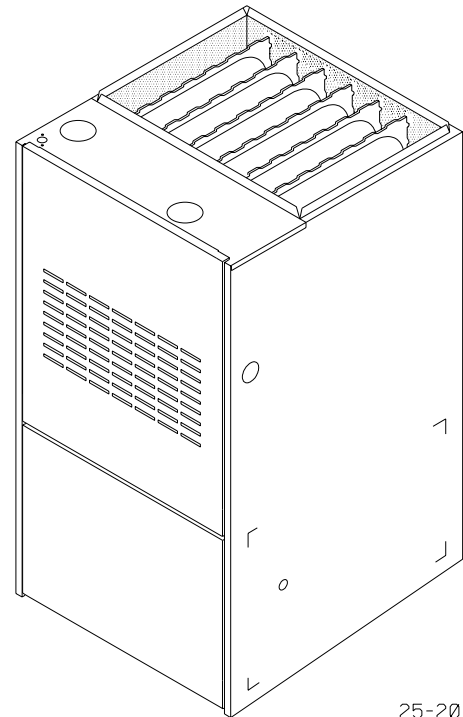


Standard Equipment

- 90% AFUE efficiency range.
- Hot surface pilot ignition device.
- Induced combustion blower.
- Adjustable electronic fan control with optional low speed continuous fan feature provides maximum comfort.
- Rigid pressed-joint serpentine design, aluminized primary heat exchanger.
- Stainless steel secondary heat exchanger.
- 20 year limited warranty on heat exchangers.
- Direct vent furnaces use 100% uncontaminated outside combustion air for maximum durability.
- Can be vented with standard Schedule 40 PVC, CPVC, Cellular core PVC, ABS or SDR-26 pipe.
- Vent pipe can be run horizontally or vertically
- In-shot monoport, low NOx burners.
- Multispeed, prelubricated PSC motors. Dynamically balanced.
- Resilient mounted motors to reduce vibration and noise.
- Entire blower assembly mounted on rails for easy service.
- 40VA transformer.
- Color coded wiring harness.
- Terminal board allows easy selection of motor speeds.
- Electronic air cleaner and humidifier connections provided.
- Factory pre-wired.
- Architectural stone prepainted cabinet.
- Insulated heat exchanger compartment.
- Flame sensor constantly monitors flame. Provides 100% gas shut off if flame is not sensed.
- Thermally activated flame rollout switch.
- Redundant gas valve for quiet, smooth, and safe ignition.
- High temperature limit control prevents overheating.
- Flue blockage pressure switch shuts down furnace if flue is restricted.
- Blower door interlock switch prevents furnace operation if door is removed.
- Compact 48" design.
- Built-in condensate drain trap saves on installation time and expense.
- Gas line entrance from left or right.
- Twinning kit available to operate two furnaces in tandem.
- LP to Natural Gas and Natural to LP Gas conversion kits available.
- Electrical entrance from left or right.
- 0" clearances on sides and back.
- Concentric vent termination kit available.



25-20-66

Warranty (Limited)

Standard warranty extended to the original purchaser (homeowner), is a limited 20 year warranty on the primary and secondary heat exchanger and a limited 5 year warranty on all other parts. Limited warranties applicable to the equipment are set forth in the manufacturer's published warranty statement, which is available from our office (address on this literature) and from local distributors for our product in your area.



Design Certified
by A.G.A.



FURNACE SPECIFICATIONS

Model Number	GNM050N12A	GNM075N14A	GNM100N16A	GNM125N20A
INPUT (btuh)	50,000	75,000	100,000	125,000
HTG. CAP. (btuh)	45,500	67,500	90,000	113,125
AFUE % (ICS)	91.0	91.0	91.0	91.0
ALTERNATE INPUT BTUH	40,000	60,000	80,000	100,000
ALTERNATE OUTPUT BTUH	36,400	54,000	72,000	90,500
CSE %	84.9	85.1	85.5	85.2
NOx (Ng/J)	<40	<40	<40	<40
TEMP. RISE RANGE (°F)	40-70	40-70	40-70	45-75
VENT SIZE (PLASTIC) *	2" OD	2" - 3" OD	2" - 3" OD	3" OD
VOLTS/PH/Hz	115/60/1	115/60/1	115/60/1	115/60/1
MIN./MAX. VOLTAGE	97/132	97/132	97/132	97/132
F.L.A.	5.3	7.5	9.2	12.0
TRANSFORMER (V.A.)	40	40	40	40
GAS PIPE SIZE (IN.)	1/2	1/2	1/2	1/2
COOLING CAP. (TONS)	3.0	3.5	4.0	5
FILTER SIZE (IN.)	16X25X1 (1)	16X25X1 (1)	16X25X1 (1)	16X25X1 (2)
FILTER SIZE (mm)	406X635X25(1)	406X635X25(1)	406X635X25(1)	406X635X25(2)
SHIPPING WT. (LBS.)	165	180	201	242

* Vent size may vary depending on length, number of elbows, standard vent or direct vent. See Installation Instructions.

BLOWER PERFORMANCE

Model Number	GNM050N12A	GNM075N14A	GNM100N16A	GNM125N20A
BLOWER TYPE AND SIZE	DD10-8	DD10-8	DD10-10	DD12-11
MOTOR H.P. (TYPE)	1/3 PSC	1/2 PSC	1/2 PSC	3/4 PSC
MOTOR SPEEDS	4	4	4	4

AIRFLOW DATA

.10 ESP IN.	LOW	718	778	954	1463
	MEDIUM LOW	840	984	1312	1650
	MEDIUM HIGH	1109	1263	1698	1879
	HIGH	1473	1576	1925	2214
.20 ESP IN.	LOW	719	786	950	1429
	MEDIUM LOW	838	1003	1292	1635
	MEDIUM HIGH	1094	1249	1645	1859
.30 ESP IN.	LOW	1431	1532	1853	2154
	MEDIUM LOW	714	790	946	1417
	MEDIUM HIGH	837	1003	1265	1614
.40 ESP IN.	LOW	1086	1244	1596	1838
	MEDIUM LOW	1396	1489	1780	2152
	MEDIUM HIGH	692	788	915	1389
.50 ESP IN.	LOW	819	1001	1231	1579
	MEDIUM LOW	1063	1215	1530	1806
	MEDIUM HIGH	1349	1432	1708	2106
.60 ESP IN.	LOW	660	781	878	1364
	MEDIUM LOW	791	982	1175	1556
	MEDIUM HIGH	1027	1186	1455	1773
.70 ESP IN.	LOW	1291	1371	1638	2049
	MEDIUM LOW	615	765	830	1339
	MEDIUM HIGH	752	962	1118	1513
.80 ESP IN.	LOW	986	1146	1362	1725
	MEDIUM LOW	1222	1308	1546	1981
	MEDIUM HIGH	563	743	778	1299
.90 ESP IN.	LOW	683	923	1020	1470
	MEDIUM LOW	934	1094	1241	1668
	MEDIUM HIGH	1141	1229	1435	1903

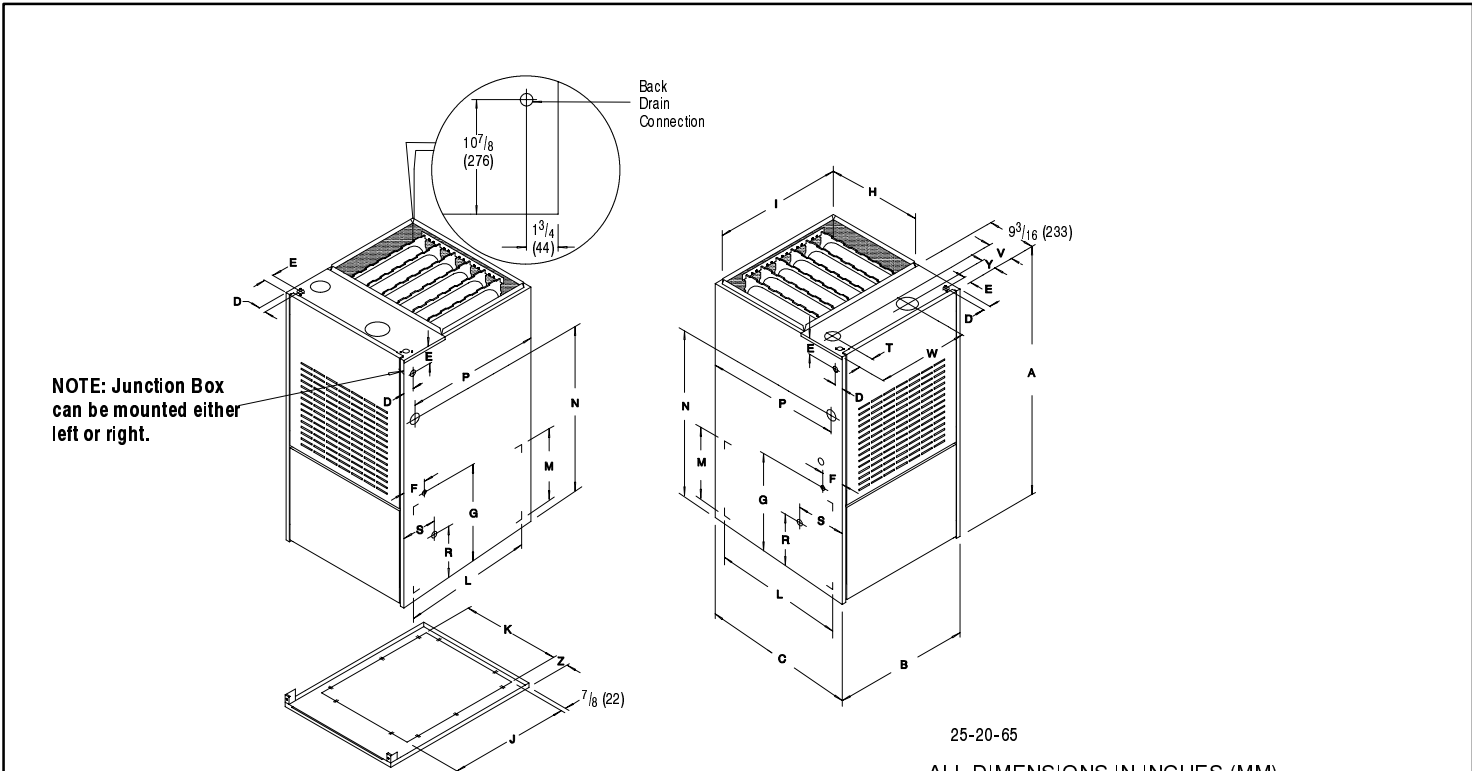
NOTE: Air flow data is without filters. Allow 600 fpm velocity air flow for each filter. See Installation Instruction

- Application of GNM100N16A & GNM125N20A above 1650 CFM requires two side returns or bottom return or use accessory stand-off filter kit for single side return.

MODEL NUMBER IDENTIFICATION GUIDE

MODEL NUMBER	G	N	M	075	N	14	A
PRODUCT GROUP G = Gas Furnace							MARKETING REVISION
FUEL U = Upflow C = Downflow/Horizontal D = Downflow N = Upflow/Horizontal							NOMINAL AIR FLOW (CFM/Tons) 12 = 1200/3 Tons 20 = 2000/5 Tons 14 = 1400/3.5 Tons 16 = 1600/4 Tons N = 115V-1Ph Nat Gas
SERIES							NOMINAL INPUT MBTUH

DIMENSIONS



ALL DIMENSIONS IN INCHES (MM)

Unit Capacity	Cabinet			Electrical Connections						Supply Air		Return Air			
				Top		Left/Right Side		Low Volt				Bottom		Side	
	A	B	C	D	E	D	E	F	G	H	I	J	K	L	M
50 & 75,000	48	19 1/8	28 1/2	1 1/2	1 1/2	1 5/8	2 1/2	4 1/2	17 5/16	18 1/2	17 5/8	23 1/8	14 3/4	22 1/2	14 1/2
100,000	48	22 3/4	28 1/2	1 1/2	1 1/2	1 5/8	2 1/2	4 1/2	17 5/16	18 1/2	21 1/4	23 1/8	18 3/4	22 1/2	14 1/2
125,000	48	26 3/8	28 1/2	1 1/2	1 1/2	1 5/8	2 1/2	4 1/2	17 5/16	18 1/2	24 -7/8	23 1/8	23 1/2	22 1/2	14 1/2

Unit Capacity	Gas Connections				Drain Connections			Supply Air		Return Air		
	Right Side		Left Side		R	Right Side	Left Side			Bottom		
	N	P	N	P		S	S	T	V	W	Y	Z
50 & 75,000	32 1/2	23 7/8	32 1/2	26 1/16	10 7/8	2 3/4	6 1/2	2 11/16	4 13/16	12 7/8	2 11/16	2 1/8
100,000	32 1/2	23 7/8	32 1/2	26 1/16	10 7/8	2 3/4	6 1/2	2 11/16	4 13/16	14 11/16	2 11/16	1 7/8
125,000	32 1/2	23 7/8	32 1/2	26 1/16	10 7/8	2 3/4	6 1/2	2 11/16	4 13/16	18	2 11/16	1 1/16

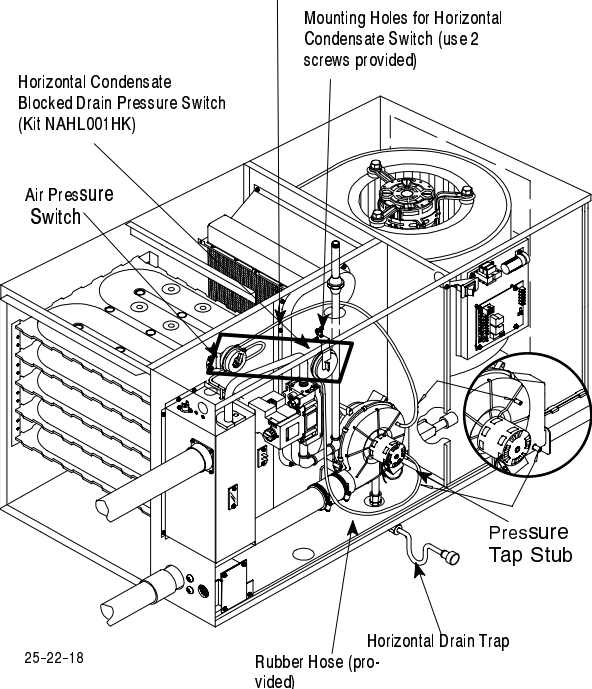
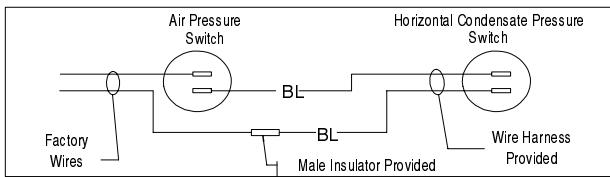
CONVERSION FROM INCHES TO METRIC (mm)	48" = (1219)	26 3/8" = (670)	2 1/2" = (64)	17 5/16" = (440)	24 1/8" = (632)	18" = (457)	2 11/16" = (68)
	32 1/2" = (825)	28 1/2" = (724)	10 7/8" = (276)	6 1/2" = (165)	14 3/4" = (375)	17 5/8" = (48)	2 11/16" = (68)
	19 1/8" = (486)	1 1/2" = (38)	4 1/2" = (114)	17 5/8" = (448)	18 3/4" = (476)	18 3/4" = (476)	4 13/16" = (122)
	22 3/4" = (578)	26 1/16" = (662)	2 3/4" = (70)	23 1/8" = (587)	23 1/2" = (597)	23 1/2" = (597)	14 11/16" = (373)
	23 7/8" = (606)	1 5/8" = (41)	18 1/2" = (470)	21 1/4" = (540)	22 1/2" = (572)	22 1/2" = (572)	12 7/8" = (327)

Accessories

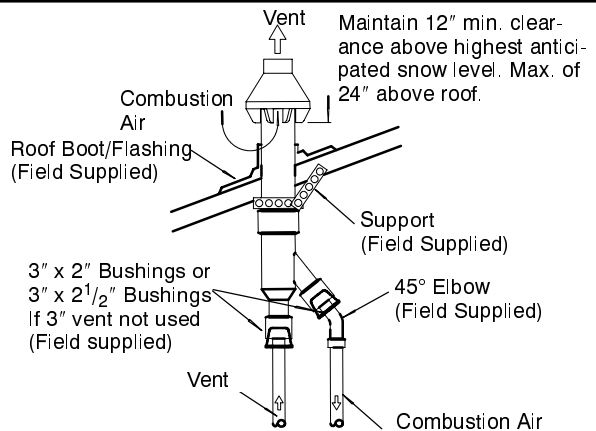
Description	Fast Parts No.	Model Number	Used With
Natural to LP Conversion Kit	* 1009509	NAHF002LP	ALL MODELS
LP to Natural Conversion Kit	* 1009510	NAHF002NG	ALL MODELS
Twinning Kit	--	NAHA003WK	ALL MODELS
Alt. Input Kit Nat. Gas	* 1009910	NAHK001LF	ALL MODELS
Alt. Input Kit LP Gas	* 1009911	NAHK002LF	ALL MODELS
LP Low Pressure Switch Detects low line pressure. Opens at 6.5" W.C. (included in L.P. Kits)	* 1009522	NAHA001PS	ALL LP FURNACES
Horizontal Pressure Switch	* 1010672	NAHL001HK	ALL HORIZONTAL APPLICATIONS
Concentric Vent Kit	* 1011129	NAHA001CV	ALL MODELS
Standoff Filter Kit 20" x 25"	--	NAHA001TK	ALL MODELS
External Filter Frame 16" x 25"	--	NAHA001FF	GNM
Bottom Return Filter Kit 20" x 25"	--	NAHA002FF	GNM100N16A
Bottom Return Duct Filter and Filter Frame 25" x 25"	--	NAHA004FF	GNM125N20A

* Must be ordered from Fast Parts

NAHL001HK Typical Horizontal Condensate Pressure Switch Kit Installation

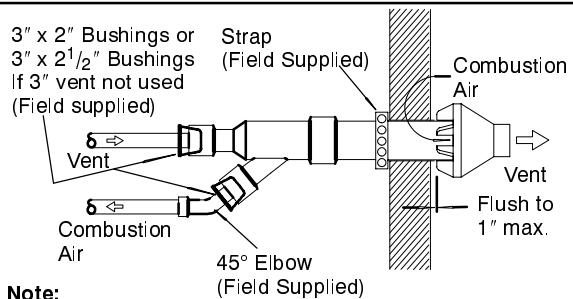


NAHA001CV Concentric Vent Kit Roof Installation



Note: Support must be field installed to secure termination kit to structure. 25-22-02

NAHA001CV Concentric Vent Kit Sidewall Attachment



Note: Securing strap must be field installed to prevent movement of termination kit in side wall. 25-22-02