

PHA "D" SERIES



Rated in accordance with ARI Standard 240. Certification applies only when used with proper components as listed with ARI.



Listed By Underwriters' Laboratories

CONVERTIBLE SINGLE PACKAGE HEAT PUMP

FEATURE

SINGLE PACKAGE, 2 THRU 5 TON COOLING

- Single package heat pump, self contained with optional electric heat accessory for year round comfort. Systems installed on rooftop or ground level. The unit is shipped in the horizontal position and can easily be converted to downflow.

CONSTRUCTION

- 20 gauge galvanized-painted cabinet. One piece weather resistant top. Access panels for easy service. Side by side supply and return. Heavy gauge base with rails.

CABINET

- Triple-coated steel, consisting of a Polyester top coat, a urethane primer coat preceded by an oxide pretreatment.

INDOOR BLOWER

- Standard direct systems.
- "No Difference" Design-Unit will operate at the same rated External Static Pressure in the down shot or horizontal duct position.
- Specially designed track enhances evaporator motor and blower serviceability.

IMPROVED INSULATION

- Dual density insulation improves temperature separation.

COPPER TUBE/ALUMINUM FIN COILS

- Enhanced aluminium fins mechanically bonded to copper tubes for improved heat transfer.

ELECTRICAL CONTROLS

- Located behind one exterior panel for easier maintenance.

EXTERNALLY-MOUNTED GAUGE PORTS

- Allows for more accurate reading of operating conditions while servicing. Internal ports are also provided for quicker charging and recovery.

INTEGRAL BASE RAILS

- Fork-lift access on three sides. Holes provided for lifting lugs makes rooftop installation easier.

ELECTRIC HEAT ACCESSORY

- 5 thru 30 KW

THERMOSTATIC EXPANSION VALVES

- Thermostatic expansion valves for heating and cooling refrigerant metering.

LOSS OF CHARGE PRESSURE SWITCH

- Low pressure switch on the high side to prevent system damage due to a loss of charge.

COIL GUARD

- Coil guard is standard on all models.

• RESIDENTIAL AND COMMERCIAL SYSTEMS • SPLIT SYSTEMS • PACKAGED AIR CONDITIONERS • COMBINATION GAS / ELECTRIC UNITS • HEAT PUMPS • AIR HANDLERS • MANUFACTURED HOME AIR CONDITIONERS • GAS, OIL AND ELECTRIC FURNACES

International Comfort Products
650 Heil-Quaker Avenue
Lewisburg, Tn. 37091

518 11 1001 01

04/2002

UNIT SPECIFICATIONS

| MODEL NUMBER | Electrical Data | | | | Condenser Data | | | | | | | | |
|--------------|-----------------------------|----------------------|-----------------------|----------|---------------------------|---------------------|-----------------|------------|----------------|-------------------|---------------------|------------|------------|
| | 208 / 230 Voltage Ph. - Hz. | Time Delay Fuse Size | HACR Brkr / Max. Fuse | Ampacity | Coil | | | Fan Motor | | | Fan | | |
| | | | | | Total Face Area (Sq. Ft.) | Fins Per In. / Rows | Tube Dia. (In.) | Horsepower | Full Load Amps | Locked Rotor Amps | Size Diameter (In.) | RPM (Max.) | CFM (Max.) |
| PHAD24N1K * | 1-60 | 25 amps. | 30 amps. | 20.2 | 11.47 | 16 / 2 | 3/8 | 1/3 | 1.4 | 3.57 | 20.375 | 1155 | 2250 |
| PHAD30N1K * | 1-60 | 30 amps. | 35 amps. | 23.0 | 11.47 | 16 / 2 | 3/8 | 1/3 | 1.4 | 3.57 | 20.375 | 1155 | 2250 |
| PHAD36N1K * | 1-60 | 35 amps. | 45 amps. | 27.4 | 11.47 | 16 / 2 | 3/8 | 1/3 | 1.4 | 3.57 | 20.375 | 1135 | 2800 |
| PHAD42N1K * | 1-60 | 40 amps. | 50 amps. | 31.4 | 17.20 | 16 / 2 | 3/8 | 1/3 | 1.7 | 5.00 | 22.0 | 1140 | 3340 |
| PHAD47N1K * | 1-60 | 45 amps. | 60 amps. | 36.3 | 17.20 | 16 / 2 | 3/8 | 1/3 | 1.7 | 5.00 | 22.0 | 1140 | 3340 |
| PHAD60N1K * | 1-60 | 60 amps | 60 amps | 43.7 | 17.20 | 16 / 2 | 3/8 | 3/4 | 2.6 | 9.52 | 22.0 | 1150 | 4100 |

| MODEL NUMBER | Evaporator Coil | | | | | | | | | | Compressor | Factory Refrigerant Charge R-22 Oz. | Shlp Weight (Lbs.) | |
|--------------|---------------------------|---------------------|---------------------|-----------------------------|----------------|-------------------|-------------|---------------|-----------|-----------------|------------|-------------------------------------|--------------------|-------------------|
| | Coil | | | Blower H.P. / Type / Speeds | Motor | | Blower | | | Rated Load Amps | | | | Locked Rotor Amps |
| | Total Face Area (Sq. Ft.) | Fins Per In. / Rows | Tube Diameter (In.) | | Full Load Amps | Locked Rotor Amps | Type & Size | RPM (Maximum) | CFM Rated | | | | | |
| PHAD24N1K * | 3.56 | 14 / 3 | 3/8 | 1/3 / PSC / 4 | 2.6 | 4.00 | DD10-8A | 1100 | 800 | 12.9 | 62.5 | 120 | 394 | |
| PHAD30N1K * | 3.56 | 14 / 4 | 3/8 | 1/3 / PSC / 4 | 2.6 | 4.00 | DD10-8A | 1100 | 1000 | 15.2 | 76 | 130 | 401 | |
| PHAD36N1K * | 3.56 | 14 / 4 | 3/8 | 1/2 / PSC / 4 | 3.6 | 7.80 | DD11-9A | 1125 | 1200 | 17.9 | 90.5 | 135 | 410 | |
| PHAD42N1K * | 8.20 | 14 / 3 | 3/8 | 1/2 / PSC / 4 | 4.0 | 7.09 | DD10-8A | 1100 | 1300 | 20.5 | 107.0 | 240 | 564 | |
| PHAD47N1K * | 8.20 | 14 / 4 | 3/8 | 1 / PSC / 4 | 5.0 | 8.75 | DD11-11A | 1095 | 1600 | 23.7 | 129.0 | 265 | 624 | |
| PHAD60N1K * | 8.20 | 14 / 4 | 3/8 | 1 / PSC / 4 | 5.0 | 8.75 | DD11-11A | 1095 | 2000 | 28.8 | 169.0 | 260 | 624 | |

* Product produced after January 1995 will be Architectural Stone color and will be identified by an "A" at the end of the Sales number on the carton.

PERFORMANCE DATA: COOLING

| MODEL NUMBER | Rated Capacity ¹ BTUH Heating | Rated Capacity ² BTUH Cooling | S / T Ratio | HSPF | S.E.E.R. | E.E.R. ⁴ | Power Input Watts | Evaporator Rated Airflow (SCFM) | Ext. Static Pressure Drop ³ Wet |
|--------------|--|--|-------------|------|----------|---------------------|-------------------|---------------------------------|--|
| PHAD24N1K * | 24,800 | 23,800 | .75 | 6.85 | 12.5 | 10.90 | 2183 | 800 | .25 |
| PHAD30N1K * | 29,600 | 29,800 | .75 | 7.20 | 12.4 | 10.55 | 2825 | 1000 | .25 |
| PHAD36N1K * | 37,000 | 35,200 | .76 | 7.10 | 12.0 | 10.00 | 3520 | 1200 | .30 |
| PHAD42N1K * | 41,000 | 40,000 | .76 | 7.05 | 12.0 | 9.95 | 4020 | 1300 | .30 |
| PHAD47N1K * | 43,500 | 47,500 | .78 | 6.90 | 12.0 | 10.15 | 4679 | 1600 | .30 |
| PHAD60N1K * | 53,000 | 57,000 | .78 | 6.80 | 12.05 | 9.75 | 5846 | 2000 | .30 |

* Product produced after January 1995 will be Architectural Stone color and will be identified by an "A" at the end of the Sales number on the carton.

¹ Rated Capacity @ 47° F. ² Rated Capacity @ 230 Volts. For applications at 208 volts deduct 1000 BTU. Contact distributor for availability dates.

³ Includes a .08 drop for a filter. ⁴ For reference only.

PERFORMANCE DATA: ELECTRIC HEAT ACCESSORY

| Heater Model | Use With | Supply Voltage | KW Rating | Total Heating BTUH | *Temperature Rise °F @ CFM | | | | | | | | |
|--------------|-------------|----------------|-----------|--------------------|----------------------------|------|------|------|------|------|------|------|------|
| | | | | | 600 | 800 | 1000 | 1200 | 1400 | 1600 | 1800 | 2000 | 2200 |
| AEB005BKA | PHAD24 - 60 | 240-1-60 | 5 | 17,065 | 26.3 | 19.8 | 15.8 | 13.2 | 11.3 | --- | --- | --- | --- |
| AEB010CKA | PHAD24 - 60 | 240-1-60 | 10 | 34,130 | 52.7 | 39.5 | 31.6 | 26.3 | 22.6 | 19.8 | 17.8 | 15.8 | 14.4 |
| AEB015BKA | PHAD24 & 30 | 240-1-60 | 15 | 51,195 | --- | 59.3 | 47.4 | 39.5 | 33.9 | --- | --- | --- | --- |
| AEB015CKA | PHAD36 - 60 | 240-1-60 | 15 | 51,195 | --- | --- | --- | 39.5 | 33.9 | 29.6 | 26.3 | 23.7 | 21.5 |
| AEB020CKA | PHAD36 - 60 | 240-1-60 | 20 | 68,260 | --- | --- | --- | 52.6 | 45.1 | 39.5 | 35.1 | 31.6 | 28.7 |
| AEB025CKA | PHAD47 & 60 | 240-1-60 | 25 | 85,325 | --- | --- | --- | --- | --- | 49.4 | 43.9 | 39.5 | 35.9 |
| AEB030CKA | PHAD47 & 60 | 240-1-60 | 30 | 102,390 | --- | --- | --- | --- | --- | 59.3 | 52.7 | 47.4 | 43.1 |

* TEMPERATURE RISE MUST NOT EXCEED 60° F.

ELECTRICAL DATA: ELECTRIC HEAT ACCESSORY

| Heater Model | Supply Voltage | KW Rating | Total Heating BTUH | Supply Circuit No. | Heater Amps | Minimum Circuit Ampacity | Maximum Overcurrent Protective Device (Amps) |
|--------------|----------------|-----------|-----------------------|-------------------------------|----------------------|-----------------------------|--|
| AEB005BKA | 240-1-60 | 5.0 | 17,065 | L3 - L4 | 20.8 | 26.0 | 30 |
| | 208-1-60 | 3.8 | 12,969 | L3 - L4 | 18.2 | 22.8 | 25 |
| AEB010CKA | 240-1-60 | 10.0 | 34,130 | L3 - L4 | 41.7 | 52.5 | 60 |
| | 208-1-60 | 7.5 | 25,598 | L3 - L4 | 36.1 | 45.1 | 50 |
| AEB015BKA | 240-1-60 | 15.0 | 51,195 | L3 - L4 L5 - L6 | 41.7 20.8 | 52.5 26.0 | 60 30 |
| | 208-1-60 | 11.3 | 38,567 | L3 - L4 L5 - L6 | 36.1 18.2 | 45.1 22.8 | 50 25 |
| AEB015CKA | 240-1-60 | 15.0 | 51,195 | L3 - L4 L5 - L6 | 41.7 20.8 | 52.5 26.0 | 60 30 |
| | 208-1-60 | 11.3 | 38,567 | L3 - L4 L5 - L6 | 36.1 18.2 | 45.1 22.8 | 50 25 |
| AEB020CKA | 240-1-60 | 20.0 | 68,260 | L3 - L4 L5 - L6 | 41.7 41.7 | 52.5 52.5 | 60 60 |
| | 208-1-60 | 15.0 | 51,195 | L3 - L4 L5 - L6 | 36.1 36.1 | 45.1 45.1 | 50 50 |
| AEB025CKA | 240-1-60 | 25.0 | 85,325 | L3 - L4 L5 - L6 L7 - L8 | 41.7 41.7 20.8 | 52.5 52.5 26.0 | 60 60 30 |
| | 208-1-60 | 18.8 | 64,164 | L3 - L4 L5 - L6 L7 - L8 | 36.1 36.1 18.2 | 45.1 45.1 22.8 | 50 50 25 |
| AEB030CKA | 240-1-60 | 30.0 | 102,390 | L3 - L4 L5 - L6 L7 - L8 | 41.7 41.7 41.7 | 52.5 52.5 52.5 | 60 60 60 |
| | 208-1-60 | 22.5 | 76,793 | L3 - L4 L5 - L6 L7 - L8 | 36.1 36.1 36.1 | 45.1 45.1 54.1 | 50 50 50 |

BLOWER PERFORMANCE DATA

| Model Number | Motor Speed | Air Delivery in CFM External Static Pressure (In. W.C.) | | | | | |
|-----------------|----------------|--|------|------|------|------|------|
| | | .20 | .30 | .40 | .50 | .60 | .70 |
| PHAD24N1K | HI | 1282 | 1243 | 1196 | 1142 | 1080 | 1010 |
| | MD HI | 1062 | 1041 | 1012 | 971 | 916 | 844 |
| | MD LO | 1007 | 987 | 957 | 917 | 864 | 796 |
| | LO | 816 | 801 | 780 | 749 | 707 | 653 |
| PHAD30N1K | HI | 1282 | 1243 | 1196 | 1142 | 1080 | 1010 |
| | MD HI | 1062 | 1041 | 1012 | 971 | 916 | 844 |
| | MD LO | 1007 | 987 | 957 | 917 | 864 | 796 |
| | LO | ** | ** | ** | ** | ** | ** |
| PHAD36N1K | HI | 1547 | 1489 | 1428 | 1363 | 1291 | 1211 |
| | MD HI | 1468 | 1416 | 1358 | 1295 | 1226 | 1148 |
| | MD LO | 1413 | 1364 | 1311 | 1252 | 1185 | 1109 |
| | LO | 1299 | 1255 | 1204 | 1147 | 1084 | 1015 |
| PHAD42N1K | HI | 1572 | 1524 | 1469 | 1406 | 1332 | 1245 |
| | MD HI | 1473 | 1433 | 1387 | 1333 | 1266 | 1186 |
| | MD LO | 1374 | 1342 | 1300 | 1248 | 1185 | 1112 |
| | LO | 1301 | 1273 | 1234 | 1184 | 1124 | 1054 |
| PHAD47N1K | HI | 2222 | 2165 | 2103 | 2037 | 1967 | 1891 |
| | MD HI | 2066 | 2019 | 1968 | 1912 | 1850 | 1784 |
| | MD LO | 1611 | 1591 | 1566 | 1535 | 1496 | 1449 |
| | LO | 1298 | 1281 | 1259 | 1233 | 1203 | 1171 |
| PHAD60N1K | HI | 2222 | 2165 | 2103 | 2037 | 1967 | 1891 |
| | MD HI | 2066 | 2019 | 1968 | 1912 | 1850 | 1784 |
| | MD LO | 1611 | 1591 | 1566 | 1535 | 1496 | 1449 |
| | LO | 1298 | 1281 | 1259 | 1233 | 1203 | 1171 |

Air delivery against shown external static pressures taken with 230V to unit, dry coil and largest available electric heater. For wet coil subtract approximately 25 CFM. Add .08 static for internal filters.

****NOTE: Do not operate PHAD30N1K on low speed setting.**

EXPANDED PERFORMANCE DATA (COOLING) - 2 TON

| Airflow | | | Outdoor Ambient Temperature - Degrees F. Dry Bulb | | | | | | | | | | | | | | | | | | | | | | | |
|---------|-----|-----|---|------|------|------|------|------|------|------|------|------|------|------|------|------|------|------|------|------|------|------|------|------|------|------|
| | | | 65 | | | | 75 | | | | 85 | | | | 95 | | | | 105 | | | | 115 | | | |
| | | | Entering Indoor Temperature - Degrees F. Wet Bulb | | | | | | | | | | | | | | | | | | | | | | | |
| IDB* | CFM | | 59 | 63 | 67 | 71 | 59 | 63 | 67 | 71 | 59 | 63 | 67 | 71 | 59 | 63 | 67 | 71 | 59 | 63 | 67 | 71 | 59 | 63 | 67 | 71 |
| 70 | 896 | MBh | 23.3 | 24.2 | 26.5 | - | 22.8 | 23.6 | 25.9 | - | 22.2 | 23.0 | 25.3 | - | 21.7 | 22.5 | 24.6 | - | 20.6 | 21.4 | 23.4 | - | 19.1 | 19.8 | 21.7 | - |
| | | S/T | 0.75 | 0.63 | 0.44 | - | 0.78 | 0.65 | 0.45 | - | 0.80 | 0.67 | 0.46 | - | 0.83 | 0.69 | 0.48 | - | 0.86 | 0.72 | 0.50 | - | 0.86 | 0.72 | 0.50 | - |
| | | KW | 1.74 | 1.77 | 1.82 | - | 1.86 | 1.89 | 1.95 | - | 1.96 | 2.00 | 2.06 | - | 2.06 | 2.10 | 2.16 | - | 2.14 | 2.18 | 2.25 | - | 2.21 | 2.25 | 2.32 | - |
| | 800 | MBh | 22.6 | 23.5 | 25.7 | - | 22.1 | 22.9 | 25.1 | - | 21.6 | 22.4 | 24.5 | - | 21.1 | 21.8 | 23.9 | - | 20.0 | 20.7 | 22.7 | - | 18.5 | 19.2 | 21.0 | - |
| | | S/T | 0.72 | 0.60 | 0.42 | - | 0.74 | 0.62 | 0.43 | - | 0.76 | 0.64 | 0.44 | - | 0.79 | 0.66 | 0.46 | - | 0.82 | 0.68 | 0.47 | - | 0.82 | 0.69 | 0.48 | - |
| | | KW | 1.73 | 1.76 | 1.81 | - | 1.85 | 1.88 | 1.94 | - | 1.95 | 1.99 | 2.05 | - | 2.04 | 2.08 | 2.15 | - | 2.12 | 2.16 | 2.23 | - | 2.19 | 2.23 | 2.30 | - |
| | 704 | MBh | 21.5 | 22.3 | 24.4 | - | 21.0 | 21.8 | 23.9 | - | 20.5 | 21.3 | 23.3 | - | 20.0 | 20.7 | 22.7 | - | 19.0 | 19.7 | 21.6 | - | 17.6 | 18.3 | 20.0 | - |
| | | S/T | 0.69 | 0.57 | 0.40 | - | 0.71 | 0.60 | 0.41 | - | 0.73 | 0.61 | 0.42 | - | 0.75 | 0.63 | 0.44 | - | 0.78 | 0.65 | 0.45 | - | 0.79 | 0.66 | 0.46 | - |
| | | KW | 1.70 | 1.73 | 1.78 | - | 1.82 | 1.85 | 1.91 | - | 1.92 | 1.96 | 2.02 | - | 2.01 | 2.05 | 2.11 | - | 2.09 | 2.13 | 2.20 | - | 2.16 | 2.20 | 2.27 | - |
| 75 | 896 | MBh | 23.7 | 24.4 | 26.4 | 28.4 | 23.2 | 23.9 | 25.8 | 27.7 | 22.6 | 23.3 | 25.2 | 27.0 | 22.1 | 22.7 | 24.6 | 26.4 | 21.0 | 21.6 | 23.4 | 25.1 | 19.4 | 20.0 | 21.6 | 23.2 |
| | | S/T | 0.86 | 0.77 | 0.58 | 0.37 | 0.89 | 0.79 | 0.60 | 0.39 | 0.91 | 0.81 | 0.62 | 0.40 | 0.94 | 0.84 | 0.64 | 0.41 | 0.97 | 0.87 | 0.66 | 0.42 | 0.98 | 0.88 | 0.67 | 0.43 |
| | | KW | 1.75 | 1.78 | 1.84 | 1.89 | 1.87 | 1.91 | 1.96 | 2.02 | 1.98 | 2.02 | 2.08 | 2.14 | 2.07 | 2.12 | 2.18 | 2.25 | 2.15 | 2.20 | 2.27 | 2.34 | 2.22 | 2.27 | 2.34 | 2.41 |
| | 800 | MBh | 23.0 | 23.7 | 25.7 | 27.5 | 22.5 | 23.2 | 25.1 | 26.9 | 22.0 | 22.6 | 24.5 | 26.3 | 21.4 | 22.1 | 23.9 | 25.6 | 20.3 | 21.0 | 22.7 | 24.3 | 18.8 | 19.4 | 21.0 | 22.5 |
| | | S/T | 0.82 | 0.73 | 0.55 | 0.36 | 0.85 | 0.76 | 0.57 | 0.37 | 0.87 | 0.78 | 0.59 | 0.38 | 0.90 | 0.80 | 0.61 | 0.39 | 0.93 | 0.83 | 0.63 | 0.40 | 0.94 | 0.84 | 0.63 | 0.41 |
| | | KW | 1.74 | 1.77 | 1.82 | 1.88 | 1.86 | 1.90 | 1.95 | 2.01 | 1.96 | 2.00 | 2.06 | 2.13 | 2.06 | 2.10 | 2.16 | 2.23 | 2.14 | 2.18 | 2.25 | 2.32 | 2.21 | 2.25 | 2.32 | 2.39 |
| | 704 | MBh | 21.9 | 22.5 | 24.4 | 26.2 | 21.4 | 22.0 | 23.8 | 25.6 | 20.9 | 21.5 | 23.2 | 24.9 | 20.3 | 21.0 | 22.7 | 24.3 | 19.3 | 19.9 | 21.5 | 23.1 | 17.9 | 18.4 | 20.0 | 21.4 |
| | | S/T | 0.78 | 0.70 | 0.53 | 0.34 | 0.81 | 0.73 | 0.55 | 0.35 | 0.83 | 0.74 | 0.56 | 0.36 | 0.86 | 0.77 | 0.58 | 0.37 | 0.89 | 0.80 | 0.60 | 0.39 | 0.90 | 0.80 | 0.61 | 0.39 |
| | | KW | 1.71 | 1.75 | 1.80 | 1.85 | 1.83 | 1.87 | 1.92 | 1.98 | 1.94 | 1.97 | 2.03 | 2.09 | 2.03 | 2.07 | 2.13 | 2.20 | 2.11 | 2.15 | 2.21 | 2.28 | 2.17 | 2.22 | 2.28 | 2.36 |
| 80 | 896 | MBh | 24.1 | 24.7 | 26.4 | 28.2 | 23.6 | 24.1 | 25.7 | 27.5 | 23.0 | 23.5 | 25.1 | 26.9 | 22.5 | 22.9 | 24.5 | 26.2 | 21.3 | 21.8 | 23.3 | 24.9 | 19.8 | 20.2 | 21.6 | 23.1 |
| | | S/T | 0.94 | 0.88 | 0.72 | 0.54 | 1.00 | 0.91 | 0.74 | 0.56 | 1.00 | 0.94 | 0.76 | 0.57 | 1.00 | 0.97 | 0.79 | 0.59 | 1.00 | 1.00 | 0.82 | 0.61 | 1.00 | 1.00 | 0.82 | 0.62 |
| | | KW | 1.76 | 1.80 | 1.85 | 1.90 | 1.89 | 1.92 | 1.98 | 2.04 | 1.99 | 2.03 | 2.09 | 2.16 | 2.09 | 2.13 | 2.20 | 2.26 | 2.17 | 2.22 | 2.28 | 2.35 | 2.24 | 2.29 | 2.36 | 2.43 |
| | 800 | MBh | 23.4 | 23.9 | 25.6 | 27.4 | 22.9 | 23.4 | 25.0 | 26.7 | 22.3 | 22.8 | 24.4 | 26.1 | 21.8 | 22.3 | 23.8 | 25.4 | 20.7 | 21.2 | 22.6 | 24.2 | 19.2 | 19.6 | 20.9 | 22.4 |
| | | S/T | 0.90 | 0.84 | 0.68 | 0.51 | 0.93 | 0.87 | 0.71 | 0.53 | 0.95 | 0.89 | 0.73 | 0.54 | 0.98 | 0.92 | 0.75 | 0.56 | 1.00 | 0.96 | 0.78 | 0.58 | 1.00 | 0.96 | 0.78 | 0.59 |
| | | KW | 1.75 | 1.78 | 1.84 | 1.89 | 1.87 | 1.91 | 1.96 | 2.02 | 1.98 | 2.02 | 2.08 | 2.14 | 2.07 | 2.12 | 2.18 | 2.25 | 2.15 | 2.20 | 2.27 | 2.34 | 2.22 | 2.27 | 2.34 | 2.41 |
| | 704 | MBh | 22.3 | 22.8 | 24.3 | 26.0 | 21.7 | 22.2 | 23.7 | 25.4 | 21.2 | 21.7 | 23.2 | 24.8 | 20.7 | 21.2 | 22.6 | 24.2 | 19.7 | 20.1 | 21.5 | 23.0 | 18.2 | 18.6 | 19.9 | 21.3 |
| | | S/T | 0.86 | 0.80 | 0.65 | 0.49 | 0.89 | 0.83 | 0.68 | 0.51 | 0.91 | 0.86 | 0.70 | 0.52 | 0.94 | 0.88 | 0.72 | 0.54 | 0.98 | 0.92 | 0.75 | 0.56 | 0.99 | 0.92 | 0.75 | 0.56 |
| | | KW | 1.73 | 1.76 | 1.81 | 1.86 | 1.85 | 1.88 | 1.94 | 1.99 | 1.95 | 1.99 | 2.05 | 2.11 | 2.04 | 2.08 | 2.15 | 2.21 | 2.12 | 2.16 | 2.23 | 2.30 | 2.19 | 2.23 | 2.30 | 2.37 |
| 85 | 896 | MBh | 24.6 | 25.0 | 26.2 | 28.0 | 24.0 | 24.5 | 25.6 | 27.3 | 23.4 | 23.9 | 25.0 | 26.7 | 22.8 | 23.3 | 24.4 | 26.0 | 21.7 | 22.1 | 23.2 | 24.7 | 20.1 | 20.5 | 21.5 | 22.9 |
| | | S/T | 0.98 | 0.95 | 0.86 | 0.70 | 1.00 | 0.98 | 0.89 | 0.72 | 1.00 | 1.00 | 0.91 | 0.74 | 1.00 | 1.00 | 0.94 | 0.76 | 1.00 | 1.00 | 0.98 | 0.79 | 1.00 | 1.00 | 0.98 | 0.80 |
| | | KW | 1.78 | 1.81 | 1.86 | 1.92 | 1.90 | 1.94 | 1.99 | 2.05 | 2.01 | 2.05 | 2.11 | 2.18 | 2.11 | 2.15 | 2.21 | 2.28 | 2.19 | 2.23 | 2.30 | 2.37 | 2.26 | 2.31 | 2.38 | 2.45 |
| | 800 | MBh | 23.8 | 24.3 | 25.5 | 27.2 | 23.3 | 23.7 | 24.9 | 26.5 | 22.7 | 23.2 | 24.3 | 25.9 | 22.2 | 22.6 | 23.7 | 25.3 | 21.1 | 21.5 | 22.5 | 24.0 | 19.5 | 19.9 | 20.8 | 22.2 |
| | | S/T | 0.94 | 0.91 | 0.82 | 0.66 | 0.97 | 0.94 | 0.85 | 0.69 | 1.00 | 0.96 | 0.87 | 0.71 | 1.00 | 0.99 | 0.90 | 0.73 | 1.00 | 1.00 | 0.93 | 0.76 | 1.00 | 1.00 | 0.94 | 0.76 |
| | | KW | 1.76 | 1.80 | 1.85 | 1.90 | 1.89 | 1.92 | 1.98 | 2.04 | 1.99 | 2.03 | 2.09 | 2.16 | 2.09 | 2.13 | 2.20 | 2.26 | 2.17 | 2.22 | 2.28 | 2.35 | 2.24 | 2.29 | 2.36 | 2.43 |
| | 704 | MBh | 22.7 | 23.1 | 24.2 | 25.8 | 22.1 | 22.6 | 23.6 | 25.2 | 21.6 | 22.0 | 23.1 | 24.6 | 21.1 | 21.5 | 22.5 | 24.0 | 20.0 | 20.4 | 21.4 | 22.8 | 18.5 | 18.9 | 19.8 | 21.1 |
| | | S/T | 0.90 | 0.87 | 0.78 | 0.64 | 0.93 | 0.90 | 0.81 | 0.66 | 0.96 | 0.92 | 0.83 | 0.68 | 0.99 | 0.95 | 0.86 | 0.70 | 1.00 | 0.99 | 0.89 | 0.72 | 1.00 | 1.00 | 0.90 | 0.73 |
| | | KW | 1.74 | 1.77 | 1.82 | 1.87 | 1.86 | 1.89 | 1.95 | 2.01 | 1.96 | 2.00 | 2.06 | 2.13 | 2.06 | 2.10 | 2.16 | 2.23 | 2.14 | 2.18 | 2.25 | 2.32 | 2.21 | 2.25 | 2.32 | 2.39 |

* Entering Indoor Temperature - Degrees F. Dry Bulb 23.8 Standard Rating

EXPANDED PERFORMANCE DATA (HEATING) - 2 TON

| | Outdoor Ambient Temperature - Degrees F. Dry Bulb | | | | | | | | | | | | | | | | | |
|-----|---|------|------|------|------|------|------|------|------|------|------|------|------|------|------|------|------|------|
| | 65 | 60 | 55 | 50 | 47 | 45 | 40 | 35 | 30 | 25 | 20 | 17 | 15 | 10 | 5 | 0 | -5 | -10 |
| MBh | 31.2 | 29.5 | 27.8 | 26.0 | 24.8 | 24.0 | 22.3 | 20.6 | 16.9 | 15.6 | 14.4 | 13.6 | 13.1 | 11.8 | 10.4 | 9.1 | 7.8 | 6.4 |
| T/R | 36.1 | 34.2 | 32.2 | 30.1 | 28.7 | 27.8 | 25.8 | 23.8 | 19.6 | 18.1 | 16.7 | 15.7 | 15.2 | 13.6 | 12.1 | 10.5 | 9.0 | 7.4 |
| KW | 2.36 | 2.31 | 2.27 | 2.23 | 2.20 | 2.18 | 2.14 | 2.09 | 2.11 | 2.06 | 2.02 | 1.99 | 1.97 | 1.93 | 1.88 | 1.84 | 1.79 | 1.75 |
| COP | 3.87 | 3.73 | 3.58 | 3.41 | 3.30 | 3.22 | 3.05 | 2.88 | 2.35 | 2.22 | 2.09 | 2.00 | 1.94 | 1.79 | 1.62 | 1.45 | 1.27 | 1.06 |
| EER | 13.2 | 12.8 | 12.2 | 11.7 | 11.3 | 11.0 | 10.4 | 9.8 | 8.0 | 7.6 | 7.1 | 6.8 | 6.6 | 6.1 | 5.5 | 4.9 | 4.3 | 3.6 |

EXPANDED PERFORMANCE DATA (COOLING) - 2-1/2 TON

| Airflow IDB* CFM | | | Outdoor Ambient Temperature - Degrees F. Dry Bulb | | | | | | | | | | | | | | | | | | | | | | | | |
|---------------------|------|------|---|------|------|------|------|------|------|------|------|------|------|------|------|------|------|------|------|------|------|------|------|------|------|------|------|
| | | | 65 | | | | 75 | | | | 85 | | | | 95 | | | | 105 | | | | 115 | | | | |
| | | | Entering Indoor Temperature - Degrees F. Wet Bulb | | | | | | | | | | | | | | | | | | | | | | | | |
| | | | 59 | 63 | 67 | 71 | 59 | 63 | 67 | 71 | 59 | 63 | 67 | 71 | 59 | 63 | 67 | 71 | 59 | 63 | 67 | 71 | 59 | 63 | 67 | 71 | 59 |
| 70 | 1120 | MBh | 29.2 | 30.3 | 33.2 | - | 28.5 | 29.6 | 32.4 | - | 27.8 | 28.9 | 31.6 | - | 27.2 | 28.2 | 30.8 | - | 25.8 | 26.7 | 29.3 | - | 23.9 | 24.8 | 27.1 | - | |
| | | S/T | 0.75 | 0.63 | 0.44 | - | 0.78 | 0.65 | 0.45 | - | 0.80 | 0.67 | 0.46 | - | 0.83 | 0.69 | 0.48 | - | 0.86 | 0.72 | 0.50 | - | 0.86 | 0.72 | 0.50 | - | |
| | | KW | 2.23 | 2.27 | 2.34 | - | 2.39 | 2.44 | 2.51 | - | 2.53 | 2.58 | 2.66 | - | 2.66 | 2.71 | 2.80 | - | 2.76 | 2.82 | 2.91 | - | 2.85 | 2.92 | 3.01 | - | |
| | 1000 | MBh | 28.4 | 29.4 | 32.2 | - | 27.7 | 28.7 | 31.4 | - | 27.0 | 28.0 | 30.7 | - | 26.4 | 27.3 | 29.9 | - | 25.1 | 26.0 | 28.5 | - | 23.2 | 24.1 | 26.4 | - | |
| | | S/T | 0.72 | 0.60 | 0.42 | - | 0.74 | 0.62 | 0.43 | - | 0.76 | 0.64 | 0.44 | - | 0.79 | 0.66 | 0.46 | - | 0.82 | 0.68 | 0.47 | - | 0.82 | 0.69 | 0.48 | - | |
| | | KW | 2.21 | 2.26 | 2.32 | - | 2.37 | 2.42 | 2.49 | - | 2.51 | 2.56 | 2.64 | - | 2.64 | 2.69 | 2.78 | - | 2.74 | 2.80 | 2.89 | - | 2.83 | 2.89 | 2.98 | - | |
| | 880 | MBh | 26.9 | 27.9 | 30.6 | - | 26.3 | 27.3 | 29.9 | - | 25.7 | 26.6 | 29.2 | - | 25.1 | 26.0 | 28.5 | - | 23.8 | 24.7 | 27.0 | - | 22.0 | 22.9 | 25.0 | - | |
| | | S/T | 0.69 | 0.57 | 0.40 | - | 0.71 | 0.60 | 0.41 | - | 0.73 | 0.61 | 0.42 | - | 0.75 | 0.63 | 0.44 | - | 0.78 | 0.65 | 0.45 | - | 0.79 | 0.66 | 0.46 | - | |
| | | KW | 2.18 | 2.22 | 2.29 | - | 2.34 | 2.38 | 2.45 | - | 2.47 | 2.52 | 2.60 | - | 2.59 | 2.65 | 2.73 | - | 2.70 | 2.75 | 2.84 | - | 2.79 | 2.85 | 2.94 | - | |
| | 75 | 1120 | MBh | 29.7 | 30.6 | 33.1 | 35.5 | 29.0 | 29.9 | 32.3 | 34.7 | 28.3 | 29.2 | 31.6 | 33.9 | 27.6 | 28.4 | 30.8 | 33.0 | 26.2 | 27.0 | 29.2 | 31.4 | 24.3 | 25.0 | 27.1 | 29.1 |
| | | | S/T | 0.86 | 0.77 | 0.58 | 0.37 | 0.89 | 0.79 | 0.60 | 0.39 | 0.91 | 0.81 | 0.62 | 0.40 | 0.94 | 0.84 | 0.64 | 0.41 | 0.97 | 0.87 | 0.66 | 0.42 | 0.98 | 0.88 | 0.67 | 0.43 |
| | | | KW | 2.25 | 2.29 | 2.36 | 2.43 | 2.41 | 2.46 | 2.53 | 2.61 | 2.55 | 2.60 | 2.68 | 2.77 | 2.68 | 2.73 | 2.82 | 2.91 | 2.79 | 2.84 | 2.93 | 3.03 | 2.88 | 2.94 | 3.03 | 3.13 |
| 1000 | | MBh | 28.8 | 29.7 | 32.1 | 34.5 | 28.2 | 29.0 | 31.4 | 33.7 | 27.5 | 28.3 | 30.6 | 32.9 | 26.8 | 27.6 | 29.9 | 32.1 | 25.5 | 26.2 | 28.4 | 30.5 | 23.6 | 24.3 | 26.3 | 28.2 | |
| | | S/T | 0.82 | 0.73 | 0.55 | 0.36 | 0.85 | 0.76 | 0.57 | 0.37 | 0.87 | 0.78 | 0.59 | 0.38 | 0.90 | 0.80 | 0.61 | 0.39 | 0.93 | 0.83 | 0.63 | 0.40 | 0.94 | 0.84 | 0.63 | 0.41 | |
| | | KW | 2.23 | 2.27 | 2.34 | 2.41 | 2.39 | 2.44 | 2.51 | 2.59 | 2.53 | 2.58 | 2.66 | 2.75 | 2.66 | 2.71 | 2.80 | 2.89 | 2.76 | 2.82 | 2.91 | 3.00 | 2.86 | 2.92 | 3.01 | 3.11 | |
| 880 | | MBh | 27.4 | 28.2 | 30.5 | 32.8 | 26.8 | 27.5 | 29.8 | 32.0 | 26.1 | 26.9 | 29.1 | 31.2 | 25.5 | 26.2 | 28.4 | 30.5 | 24.2 | 24.9 | 27.0 | 29.0 | 22.4 | 23.1 | 25.0 | 26.8 | |
| | | S/T | 0.78 | 0.70 | 0.53 | 0.34 | 0.81 | 0.73 | 0.55 | 0.35 | 0.83 | 0.74 | 0.56 | 0.36 | 0.86 | 0.77 | 0.58 | 0.37 | 0.89 | 0.80 | 0.60 | 0.39 | 0.90 | 0.80 | 0.61 | 0.39 | |
| | | KW | 2.20 | 2.24 | 2.31 | 2.37 | 2.35 | 2.40 | 2.47 | 2.55 | 2.49 | 2.54 | 2.62 | 2.70 | 2.62 | 2.67 | 2.75 | 2.84 | 2.72 | 2.78 | 2.86 | 2.96 | 2.81 | 2.87 | 2.96 | 3.06 | |
| 80 | | 1120 | MBh | 30.2 | 30.9 | 33.0 | 35.3 | 29.5 | 30.2 | 32.2 | 34.5 | 28.8 | 29.4 | 31.5 | 33.6 | 28.1 | 28.7 | 30.7 | 32.8 | 26.7 | 27.3 | 29.2 | 31.2 | 24.7 | 25.3 | 27.0 | 28.9 |
| | | | S/T | 0.94 | 0.88 | 0.72 | 0.54 | 1.00 | 0.91 | 0.74 | 0.56 | 1.00 | 0.94 | 0.76 | 0.57 | 1.00 | 0.97 | 0.79 | 0.59 | 1.00 | 1.00 | 0.82 | 0.61 | 1.00 | 1.00 | 0.82 | 0.62 |
| | | | KW | 2.26 | 2.31 | 2.38 | 2.45 | 2.43 | 2.48 | 2.55 | 2.63 | 2.57 | 2.62 | 2.71 | 2.79 | 2.70 | 2.76 | 2.84 | 2.93 | 2.81 | 2.87 | 2.96 | 3.05 | 2.90 | 2.96 | 3.06 | 3.16 |
| | 1000 | MBh | 29.3 | 30.0 | 32.0 | 34.2 | 28.7 | 29.3 | 31.3 | 33.4 | 28.0 | 28.6 | 30.5 | 32.7 | 27.3 | 27.9 | 29.8 | 31.9 | 25.9 | 26.5 | 28.3 | 30.3 | 24.0 | 24.5 | 26.2 | 28.0 | |
| | | S/T | 0.90 | 0.84 | 0.68 | 0.51 | 0.93 | 0.87 | 0.71 | 0.53 | 0.95 | 0.89 | 0.73 | 0.54 | 0.98 | 0.92 | 0.75 | 0.56 | 1.00 | 0.96 | 0.78 | 0.58 | 1.00 | 0.96 | 0.78 | 0.59 | |
| | | KW | 2.25 | 2.29 | 2.36 | 2.43 | 2.41 | 2.46 | 2.53 | 2.61 | 2.55 | 2.60 | 2.69 | 2.77 | 2.68 | 2.73 | 2.82 | 2.91 | 2.79 | 2.84 | 2.93 | 3.03 | 2.88 | 2.94 | 3.03 | 3.13 | |
| | 880 | MBh | 27.9 | 28.5 | 30.4 | 32.5 | 27.2 | 27.8 | 29.7 | 31.8 | 26.6 | 27.2 | 29.0 | 31.0 | 25.9 | 26.5 | 28.3 | 30.3 | 24.6 | 25.2 | 26.9 | 28.8 | 22.8 | 23.3 | 24.9 | 26.6 | |
| | | S/T | 0.86 | 0.80 | 0.65 | 0.49 | 0.89 | 0.83 | 0.68 | 0.51 | 0.91 | 0.86 | 0.70 | 0.52 | 0.94 | 0.88 | 0.72 | 0.54 | 0.98 | 0.92 | 0.75 | 0.56 | 0.99 | 0.92 | 0.75 | 0.56 | |
| | | KW | 2.21 | 2.26 | 2.32 | 2.39 | 2.37 | 2.42 | 2.49 | 2.57 | 2.51 | 2.56 | 2.64 | 2.73 | 2.64 | 2.69 | 2.78 | 2.86 | 2.74 | 2.80 | 2.89 | 2.98 | 2.83 | 2.89 | 2.98 | 3.08 | |
| | 85 | 1120 | MBh | 30.8 | 31.3 | 32.8 | 35.0 | 30.0 | 30.6 | 32.1 | 34.2 | 29.3 | 29.9 | 31.3 | 33.4 | 28.6 | 29.2 | 30.5 | 32.6 | 27.2 | 27.7 | 29.0 | 31.0 | 25.2 | 25.7 | 26.9 | 28.7 |
| | | | S/T | 0.98 | 0.95 | 0.86 | 0.70 | 1.00 | 0.98 | 0.89 | 0.72 | 1.00 | 1.00 | 0.91 | 0.74 | 1.00 | 1.00 | 0.94 | 0.76 | 1.00 | 1.00 | 0.98 | 0.79 | 1.00 | 1.00 | 0.98 | 0.80 |
| | | | KW | 2.28 | 2.33 | 2.39 | 2.47 | 2.45 | 2.50 | 2.57 | 2.65 | 2.59 | 2.65 | 2.73 | 2.81 | 2.72 | 2.78 | 2.87 | 2.96 | 2.83 | 2.89 | 2.98 | 3.08 | 2.92 | 2.99 | 3.08 | 3.18 |
| 1000 | | MBh | 29.9 | 30.4 | 31.9 | 34.0 | 29.2 | 29.7 | 31.1 | 33.2 | 28.5 | 29.0 | 30.4 | 32.4 | 27.8 | 28.3 | 29.7 | 31.6 | 26.4 | 26.9 | 28.2 | 30.1 | 24.4 | 24.9 | 26.1 | 27.8 | |
| | | S/T | 0.94 | 0.91 | 0.82 | 0.66 | 0.97 | 0.94 | 0.85 | 0.69 | 1.00 | 0.96 | 0.87 | 0.71 | 1.00 | 0.99 | 0.90 | 0.73 | 1.00 | 1.00 | 0.93 | 0.76 | 1.00 | 1.00 | 0.94 | 0.76 | |
| | | KW | 2.26 | 2.31 | 2.38 | 2.45 | 2.43 | 2.48 | 2.55 | 2.63 | 2.57 | 2.62 | 2.71 | 2.79 | 2.70 | 2.76 | 2.84 | 2.93 | 2.81 | 2.87 | 2.96 | 3.05 | 2.90 | 2.96 | 3.06 | 3.16 | |
| 880 | | MBh | 28.4 | 28.9 | 30.3 | 32.3 | 27.7 | 28.2 | 29.6 | 31.6 | 27.0 | 27.6 | 28.9 | 30.8 | 26.4 | 26.9 | 28.2 | 30.1 | 25.1 | 25.6 | 26.8 | 28.5 | 23.2 | 23.7 | 24.8 | 26.4 | |
| | | S/T | 0.90 | 0.87 | 0.78 | 0.64 | 0.93 | 0.90 | 0.81 | 0.66 | 0.96 | 0.92 | 0.83 | 0.68 | 0.99 | 0.95 | 0.86 | 0.70 | 1.00 | 0.99 | 0.89 | 0.72 | 1.00 | 1.00 | 0.90 | 0.73 | |
| | | KW | 2.23 | 2.27 | 2.34 | 2.41 | 2.39 | 2.44 | 2.51 | 2.59 | 2.53 | 2.58 | 2.66 | 2.75 | 2.66 | 2.71 | 2.80 | 2.89 | 2.76 | 2.82 | 2.91 | 3.00 | 2.85 | 2.92 | 3.01 | 3.11 | |

* Entering Indoor Temperature - Degrees F. Dry Bulb Standard Rating

EXPANDED PERFORMANCE DATA (HEATING) - 2-1/2 TON

| | Outdoor Ambient Temperature - Degrees F. Dry Bulb | | | | | | | | | | | | | | | | | |
|-----|---|------|------|------|------|------|------|------|------|------|------|------|------|------|------|------|------|------|
| | 65 | 60 | 55 | 50 | 47 | 45 | 40 | 35 | 30 | 25 | 20 | 17 | 15 | 10 | 5 | 0 | -5 | -10 |
| MBh | 37.2 | 35.2 | 33.2 | 31.0 | 29.6 | 28.7 | 26.6 | 24.6 | 19.7 | 18.2 | 16.7 | 15.8 | 15.2 | 13.7 | 12.1 | 10.6 | 9.0 | 7.4 |
| T/R | 34.5 | 32.6 | 30.7 | 28.7 | 27.4 | 26.6 | 24.7 | 22.7 | 18.2 | 16.8 | 15.5 | 14.6 | 14.1 | 12.6 | 11.2 | 9.8 | 8.3 | 6.8 |
| KW | 2.73 | 2.68 | 2.63 | 2.58 | 2.55 | 2.53 | 2.48 | 2.43 | 2.46 | 2.40 | 2.35 | 2.32 | 2.30 | 2.24 | 2.19 | 2.14 | 2.09 | 2.03 |
| COP | 3.98 | 3.84 | 3.69 | 3.52 | 3.40 | 3.32 | 3.15 | 2.96 | 2.34 | 2.21 | 2.08 | 1.99 | 1.94 | 1.78 | 1.62 | 1.44 | 1.26 | 1.06 |
| EER | 13.6 | 13.1 | 12.6 | 12.0 | 11.6 | 11.3 | 10.7 | 10.1 | 8.0 | 7.6 | 7.1 | 6.8 | 6.6 | 6.1 | 5.5 | 4.9 | 4.3 | 3.6 |

EXPANDED PERFORMANCE DATA (COOLING) - 3 TON

| Airflow IDB* CFM | | | Outdoor Ambient Temperature - Degrees F. Dry Bulb | | | | | | | | | | | | | | | | | | | | | | | | | | | |
|---------------------|------|-----|---|------|------|------|------|------|------|------|------|------|------|------|------|------|------|------|------|------|------|------|------|------|------|------|----|----|----|----|
| | | | 65 | | | | 75 | | | | 85 | | | | 95 | | | | 105 | | | | 115 | | | | | | | |
| | | | Entering Indoor Temperature - Degrees F. Wet Bulb | | | | | | | | | | | | | | | | | | | | | | | | | | | |
| | | | 59 | 63 | 67 | 71 | 59 | 63 | 67 | 71 | 59 | 63 | 67 | 71 | 59 | 63 | 67 | 71 | 59 | 63 | 67 | 71 | 59 | 63 | 67 | 71 | 59 | 63 | 67 | 71 |
| 70 | 1344 | MBh | 34.5 | 35.8 | 39.2 | - | 33.7 | 34.9 | 38.3 | - | 32.9 | 34.1 | 37.3 | - | 32.1 | 33.3 | 36.4 | - | 30.5 | 31.6 | 34.6 | - | 28.2 | 29.3 | 32.1 | - | | | | |
| | | S/T | 0.76 | 0.64 | 0.44 | - | 0.79 | 0.66 | 0.46 | - | 0.81 | 0.68 | 0.47 | - | 0.84 | 0.70 | 0.48 | - | 0.87 | 0.73 | 0.50 | - | 0.88 | 0.73 | 0.51 | - | | | | |
| | | KW | 2.82 | 2.87 | 2.95 | - | 3.01 | 3.07 | 3.16 | - | 3.18 | 3.24 | 3.33 | - | 3.33 | 3.39 | 3.49 | - | 3.45 | 3.52 | 3.63 | - | 3.56 | 3.63 | 3.74 | - | | | | |
| | 1200 | MBh | 33.5 | 34.7 | 38.0 | - | 32.7 | 33.9 | 37.1 | - | 31.9 | 33.1 | 36.3 | - | 31.2 | 32.3 | 35.4 | - | 29.6 | 30.7 | 33.6 | - | 27.4 | 28.4 | 31.1 | - | | | | |
| | | S/T | 0.73 | 0.61 | 0.42 | - | 0.75 | 0.63 | 0.44 | - | 0.77 | 0.65 | 0.45 | - | 0.80 | 0.67 | 0.46 | - | 0.83 | 0.69 | 0.48 | - | 0.84 | 0.70 | 0.48 | - | | | | |
| | | KW | 2.80 | 2.85 | 2.93 | - | 2.99 | 3.05 | 3.13 | - | 3.16 | 3.22 | 3.31 | - | 3.30 | 3.37 | 3.47 | - | 3.43 | 3.50 | 3.60 | - | 3.53 | 3.61 | 3.71 | - | | | | |
| | 1056 | MBh | 31.8 | 33.0 | 36.1 | - | 31.1 | 32.2 | 35.3 | - | 30.3 | 31.4 | 34.4 | - | 29.6 | 30.7 | 33.6 | - | 28.1 | 29.1 | 31.9 | - | 26.0 | 27.0 | 29.6 | - | | | | |
| | | S/T | 0.70 | 0.58 | 0.40 | - | 0.72 | 0.60 | 0.42 | - | 0.74 | 0.62 | 0.43 | - | 0.77 | 0.64 | 0.44 | - | 0.79 | 0.66 | 0.46 | - | 0.80 | 0.67 | 0.46 | - | | | | |
| | | KW | 2.76 | 2.81 | 2.89 | - | 2.95 | 3.00 | 3.09 | - | 3.11 | 3.17 | 3.26 | - | 3.25 | 3.32 | 3.41 | - | 3.38 | 3.44 | 3.54 | - | 3.48 | 3.55 | 3.66 | - | | | | |
| 75 | 1344 | MBh | 35.1 | 36.1 | 39.1 | 42.0 | 34.3 | 35.3 | 38.2 | 41.0 | 33.4 | 34.4 | 37.3 | 40.0 | 32.6 | 33.6 | 36.4 | 39.0 | 31.0 | 31.9 | 34.5 | 37.1 | 28.7 | 29.6 | 32.0 | 34.3 | | | | |
| | | S/T | 0.87 | 0.78 | 0.59 | 0.38 | 0.90 | 0.80 | 0.61 | 0.39 | 0.92 | 0.82 | 0.62 | 0.40 | 0.95 | 0.85 | 0.64 | 0.41 | 0.99 | 0.88 | 0.67 | 0.43 | 1.00 | 0.89 | 0.67 | 0.43 | | | | |
| | | KW | 2.84 | 2.89 | 2.97 | 3.06 | 3.03 | 3.09 | 3.18 | 3.27 | 3.20 | 3.27 | 3.36 | 3.46 | 3.35 | 3.42 | 3.52 | 3.63 | 3.48 | 3.55 | 3.66 | 3.77 | 3.59 | 3.66 | 3.77 | 3.89 | | | | |
| | 1200 | MBh | 34.1 | 35.1 | 38.0 | 40.7 | 33.3 | 34.2 | 37.1 | 39.8 | 32.5 | 33.4 | 36.2 | 38.8 | 31.7 | 32.6 | 35.3 | 37.9 | 30.1 | 31.0 | 33.5 | 36.0 | 27.9 | 28.7 | 31.1 | 33.3 | | | | |
| | | S/T | 0.83 | 0.74 | 0.56 | 0.36 | 0.86 | 0.77 | 0.58 | 0.37 | 0.88 | 0.79 | 0.60 | 0.38 | 0.91 | 0.81 | 0.61 | 0.40 | 0.94 | 0.84 | 0.64 | 0.41 | 0.95 | 0.85 | 0.64 | 0.41 | | | | |
| | | KW | 2.82 | 2.87 | 2.95 | 3.04 | 3.01 | 3.07 | 3.16 | 3.25 | 3.18 | 3.24 | 3.34 | 3.43 | 3.33 | 3.39 | 3.49 | 3.60 | 3.45 | 3.52 | 3.63 | 3.74 | 3.56 | 3.63 | 3.74 | 3.86 | | | | |
| | 1056 | MBh | 32.4 | 33.3 | 36.1 | 38.7 | 31.6 | 32.5 | 35.2 | 37.8 | 30.8 | 31.8 | 34.4 | 36.9 | 30.1 | 31.0 | 33.5 | 36.0 | 28.6 | 29.4 | 31.9 | 34.2 | 26.5 | 27.3 | 29.5 | 31.7 | | | | |
| | | S/T | 0.79 | 0.71 | 0.54 | 0.35 | 0.82 | 0.73 | 0.56 | 0.36 | 0.84 | 0.75 | 0.57 | 0.37 | 0.87 | 0.78 | 0.59 | 0.38 | 0.90 | 0.81 | 0.61 | 0.39 | 0.91 | 0.81 | 0.62 | 0.40 | | | | |
| | | KW | 2.78 | 2.83 | 2.91 | 2.99 | 2.97 | 3.02 | 3.11 | 3.20 | 3.13 | 3.19 | 3.29 | 3.38 | 3.28 | 3.34 | 3.44 | 3.54 | 3.40 | 3.47 | 3.57 | 3.68 | 3.51 | 3.58 | 3.69 | 3.80 | | | | |
| 80 | 1344 | MBh | 35.7 | 36.5 | 39.0 | 41.7 | 34.9 | 35.6 | 38.1 | 40.7 | 34.0 | 34.8 | 37.2 | 39.7 | 33.2 | 33.9 | 36.3 | 38.8 | 31.5 | 32.2 | 34.4 | 36.8 | 29.2 | 29.9 | 31.9 | 34.1 | | | | |
| | | S/T | 0.95 | 0.89 | 0.73 | 0.54 | 1.00 | 0.93 | 0.75 | 0.56 | 1.00 | 0.95 | 0.77 | 0.58 | 1.00 | 1.00 | 0.80 | 0.60 | 1.00 | 1.00 | 0.83 | 0.62 | 1.00 | 1.00 | 0.83 | 0.62 | | | | |
| | | KW | 2.86 | 2.91 | 3.00 | 3.08 | 3.06 | 3.11 | 3.20 | 3.30 | 3.23 | 3.29 | 3.39 | 3.49 | 3.38 | 3.44 | 3.55 | 3.65 | 3.51 | 3.58 | 3.68 | 3.80 | 3.62 | 3.69 | 3.80 | 3.92 | | | | |
| | 1200 | MBh | 34.7 | 35.4 | 37.8 | 40.5 | 33.9 | 34.6 | 37.0 | 39.5 | 33.0 | 33.8 | 36.1 | 38.6 | 32.2 | 32.9 | 35.2 | 37.6 | 30.6 | 31.3 | 33.4 | 35.7 | 28.4 | 29.0 | 31.0 | 33.1 | | | | |
| | | S/T | 0.91 | 0.85 | 0.69 | 0.52 | 0.94 | 0.88 | 0.72 | 0.54 | 0.96 | 0.90 | 0.74 | 0.55 | 1.00 | 0.93 | 0.76 | 0.57 | 1.00 | 0.97 | 0.79 | 0.59 | 1.00 | 0.98 | 0.80 | 0.59 | | | | |
| | | KW | 2.84 | 2.89 | 2.97 | 3.06 | 3.03 | 3.09 | 3.18 | 3.27 | 3.20 | 3.27 | 3.36 | 3.46 | 3.35 | 3.42 | 3.52 | 3.63 | 3.48 | 3.55 | 3.66 | 3.77 | 3.59 | 3.66 | 3.77 | 3.89 | | | | |
| | 1056 | MBh | 32.9 | 33.6 | 35.9 | 38.4 | 32.2 | 32.9 | 35.1 | 37.5 | 31.4 | 32.1 | 34.3 | 36.6 | 30.6 | 31.3 | 33.4 | 35.7 | 29.1 | 29.7 | 31.8 | 34.0 | 27.0 | 27.5 | 29.4 | 31.5 | | | | |
| | | S/T | 0.87 | 0.82 | 0.66 | 0.50 | 0.90 | 0.85 | 0.69 | 0.51 | 0.92 | 0.87 | 0.71 | 0.53 | 0.95 | 0.89 | 0.73 | 0.54 | 0.99 | 0.93 | 0.76 | 0.56 | 1.00 | 0.94 | 0.76 | 0.57 | | | | |
| | | KW | 2.80 | 2.85 | 2.93 | 3.02 | 2.99 | 3.05 | 3.13 | 3.22 | 3.16 | 3.22 | 3.31 | 3.41 | 3.30 | 3.37 | 3.47 | 3.57 | 3.43 | 3.50 | 3.60 | 3.71 | 3.53 | 3.61 | 3.71 | 3.83 | | | | |
| 85 | 1344 | MBh | 36.3 | 37.0 | 38.8 | 41.4 | 35.5 | 36.2 | 37.9 | 40.4 | 34.6 | 35.3 | 37.0 | 39.4 | 33.8 | 34.4 | 36.1 | 38.5 | 32.1 | 32.7 | 34.3 | 36.6 | 29.7 | 30.3 | 31.7 | 33.9 | | | | |
| | | S/T | 1.00 | 0.96 | 0.87 | 0.70 | 1.00 | 1.00 | 0.90 | 0.73 | 1.00 | 1.00 | 0.92 | 0.75 | 1.00 | 1.00 | 0.95 | 0.77 | 1.00 | 1.00 | 0.99 | 0.80 | 1.00 | 1.00 | 1.00 | 0.81 | | | | |
| | | KW | 2.88 | 2.94 | 3.02 | 3.10 | 3.08 | 3.14 | 3.23 | 3.32 | 3.25 | 3.31 | 3.41 | 3.51 | 3.40 | 3.47 | 3.57 | 3.68 | 3.53 | 3.60 | 3.71 | 3.83 | 3.64 | 3.72 | 3.83 | 3.95 | | | | |
| | 1200 | MBh | 35.3 | 35.9 | 37.7 | 40.2 | 34.4 | 35.1 | 36.8 | 39.2 | 33.6 | 34.3 | 35.9 | 38.3 | 32.8 | 33.4 | 35.0 | 37.4 | 31.2 | 31.8 | 33.3 | 35.5 | 28.9 | 29.4 | 30.8 | 32.9 | | | | |
| | | S/T | 0.95 | 0.92 | 0.83 | 0.67 | 0.99 | 0.95 | 0.86 | 0.70 | 1.00 | 0.98 | 0.88 | 0.71 | 1.00 | 1.00 | 0.91 | 0.74 | 1.00 | 1.00 | 0.94 | 0.77 | 1.00 | 1.00 | 0.95 | 0.77 | | | | |
| | | KW | 2.86 | 2.91 | 3.00 | 3.08 | 3.06 | 3.11 | 3.20 | 3.30 | 3.23 | 3.29 | 3.39 | 3.49 | 3.38 | 3.44 | 3.55 | 3.65 | 3.51 | 3.58 | 3.68 | 3.80 | 3.62 | 3.69 | 3.80 | 3.92 | | | | |
| | 1056 | MBh | 33.5 | 34.2 | 35.8 | 38.2 | 32.7 | 33.4 | 34.9 | 37.3 | 31.9 | 32.6 | 34.1 | 36.4 | 31.2 | 31.8 | 33.3 | 35.5 | 29.6 | 30.2 | 31.6 | 33.7 | 27.4 | 28.0 | 29.3 | 31.2 | | | | |
| | | S/T | 0.91 | 0.88 | 0.79 | 0.64 | 0.94 | 0.91 | 0.82 | 0.67 | 0.97 | 0.93 | 0.84 | 0.68 | 1.00 | 0.96 | 0.87 | 0.71 | 1.00 | 1.00 | 0.90 | 0.73 | 1.00 | 1.00 | 0.91 | 0.74 | | | | |
| | | KW | 2.82 | 2.87 | 2.95 | 3.04 | 3.01 | 3.07 | 3.16 | 3.25 | 3.18 | 3.24 | 3.33 | 3.43 | 3.33 | 3.39 | 3.49 | 3.60 | 3.45 | 3.52 | 3.63 | 3.74 | 3.56 | 3.63 | 3.74 | 3.86 | | | | |

* Entering Indoor Temperature - Degrees F. Dry Bulb Standard Rating

EXPANDED PERFORMANCE DATA (HEATING) - 3 TON

| | Outdoor Ambient Temperature - Degrees F. Dry Bulb | | | | | | | | | | | | | | | | | |
|-----|---|------|------|------|------|------|------|------|------|------|------|------|------|------|------|------|------|------|
| | 65 | 60 | 55 | 50 | 47 | 45 | 40 | 35 | 30 | 25 | 20 | 17 | 15 | 10 | 5 | 0 | -5 | -10 |
| MBh | 46.5 | 44.0 | 41.5 | 38.7 | 37.0 | 35.9 | 33.3 | 30.7 | 24.9 | 23.0 | 21.2 | 20.0 | 19.3 | 17.3 | 15.3 | 13.4 | 11.4 | 9.3 |
| T/R | 35.9 | 34.0 | 32.0 | 29.9 | 28.5 | 27.7 | 25.7 | 23.7 | 19.2 | 17.7 | 16.3 | 15.4 | 14.9 | 13.3 | 11.8 | 10.3 | 8.8 | 7.2 |
| KW | 3.41 | 3.35 | 3.29 | 3.22 | 3.19 | 3.16 | 3.11 | 3.05 | 3.09 | 3.03 | 2.97 | 2.93 | 2.91 | 2.84 | 2.78 | 2.72 | 2.65 | 2.59 |
| COP | 4.00 | 3.85 | 3.69 | 3.52 | 3.39 | 3.32 | 3.14 | 2.95 | 2.36 | 2.22 | 2.09 | 2.00 | 1.94 | 1.78 | 1.61 | 1.44 | 1.26 | 1.06 |
| EER | 13.7 | 13.2 | 12.6 | 12.0 | 11.6 | 11.3 | 10.7 | 10.1 | 8.1 | 7.6 | 7.1 | 6.8 | 6.6 | 6.1 | 5.5 | 4.9 | 4.3 | 3.6 |

EXPANDED PERFORMANCE DATA (COOLING) - 3-1/2 TON

| Airflow IDB* CFM | | | Outdoor Ambient Temperature - Degrees F. Dry Bulb | | | | | | | | | | | | | | | | | | | | | | | | | | | |
|---------------------|------|-----|---|------|------|------|------|------|------|------|------|------|------|------|------|------|------|------|------|------|------|------|------|------|------|------|----|----|----|----|
| | | | 65 | | | | 75 | | | | 85 | | | | 95 | | | | 105 | | | | 115 | | | | | | | |
| | | | Entering Indoor Temperature - Degrees F. Wet Bulb | | | | | | | | | | | | | | | | | | | | | | | | | | | |
| | | | 59 | 63 | 67 | 71 | 59 | 63 | 67 | 71 | 59 | 63 | 67 | 71 | 59 | 63 | 67 | 71 | 59 | 63 | 67 | 71 | 59 | 63 | 67 | 71 | 59 | 63 | 67 | 71 |
| 70 | 1456 | MBh | 39.2 | 40.6 | 44.5 | - | 38.3 | 39.7 | 43.5 | - | 37.4 | 38.7 | 42.4 | - | 36.5 | 37.8 | 41.4 | - | 34.6 | 35.9 | 39.3 | - | 32.1 | 33.3 | 36.4 | - | | | | |
| | | S/T | 0.76 | 0.64 | 0.44 | - | 0.79 | 0.66 | 0.46 | - | 0.81 | 0.68 | 0.47 | - | 0.84 | 0.70 | 0.48 | - | 0.87 | 0.73 | 0.50 | - | 0.88 | 0.73 | 0.51 | - | | | | |
| | | KW | 3.19 | 3.25 | 3.35 | - | 3.42 | 3.49 | 3.59 | - | 3.62 | 3.69 | 3.80 | - | 3.79 | 3.87 | 3.99 | - | 3.94 | 4.02 | 4.15 | - | 4.07 | 4.15 | 4.28 | - | | | | |
| | 1300 | MBh | 38.1 | 39.4 | 43.2 | - | 37.2 | 38.5 | 42.2 | - | 36.3 | 37.6 | 41.2 | - | 35.4 | 36.7 | 40.2 | - | 33.6 | 34.9 | 38.2 | - | 31.2 | 32.3 | 35.4 | - | | | | |
| | | S/T | 0.73 | 0.61 | 0.42 | - | 0.75 | 0.63 | 0.44 | - | 0.77 | 0.65 | 0.45 | - | 0.80 | 0.67 | 0.46 | - | 0.83 | 0.69 | 0.48 | - | 0.84 | 0.70 | 0.48 | - | | | | |
| | | KW | 3.17 | 3.23 | 3.32 | - | 3.39 | 3.46 | 3.56 | - | 3.59 | 3.66 | 3.77 | - | 3.76 | 3.84 | 3.96 | - | 3.91 | 3.99 | 4.11 | - | 4.04 | 4.12 | 4.25 | - | | | | |
| | 1144 | MBh | 36.2 | 37.5 | 41.1 | - | 35.3 | 36.6 | 40.1 | - | 34.5 | 35.7 | 39.1 | - | 33.6 | 34.9 | 38.2 | - | 31.9 | 33.1 | 36.3 | - | 29.6 | 30.7 | 33.6 | - | | | | |
| | | S/T | 0.70 | 0.58 | 0.40 | - | 0.72 | 0.60 | 0.42 | - | 0.74 | 0.62 | 0.43 | - | 0.77 | 0.64 | 0.44 | - | 0.79 | 0.66 | 0.46 | - | 0.80 | 0.67 | 0.46 | - | | | | |
| | | KW | 3.12 | 3.18 | 3.28 | - | 3.34 | 3.41 | 3.51 | - | 3.53 | 3.61 | 3.71 | - | 3.70 | 3.78 | 3.90 | - | 3.85 | 3.93 | 4.05 | - | 3.97 | 4.06 | 4.18 | - | | | | |
| 75 | 1456 | MBh | 39.9 | 41.0 | 44.4 | 47.7 | 38.9 | 40.1 | 43.4 | 46.6 | 38.0 | 39.1 | 42.4 | 45.5 | 37.1 | 38.2 | 41.3 | 44.4 | 35.2 | 36.3 | 39.3 | 42.1 | 32.6 | 33.6 | 36.4 | 39.0 | | | | |
| | | S/T | 0.87 | 0.78 | 0.59 | 0.38 | 0.90 | 0.80 | 0.61 | 0.39 | 0.92 | 0.82 | 0.62 | 0.40 | 0.95 | 0.85 | 0.64 | 0.41 | 0.99 | 0.88 | 0.67 | 0.43 | 1.00 | 0.89 | 0.67 | 0.43 | | | | |
| | | KW | 3.22 | 3.28 | 3.37 | 3.47 | 3.44 | 3.51 | 3.62 | 3.73 | 3.64 | 3.72 | 3.83 | 3.95 | 3.82 | 3.90 | 4.02 | 4.15 | 3.97 | 4.05 | 4.18 | 4.31 | 4.10 | 4.19 | 4.32 | 4.46 | | | | |
| | 1300 | MBh | 38.7 | 39.8 | 43.1 | 46.3 | 37.8 | 38.9 | 42.1 | 45.2 | 36.9 | 38.0 | 41.1 | 44.1 | 36.0 | 37.1 | 40.1 | 43.1 | 34.2 | 35.2 | 38.1 | 40.9 | 31.7 | 32.6 | 35.3 | 37.9 | | | | |
| | | S/T | 0.83 | 0.74 | 0.56 | 0.36 | 0.86 | 0.77 | 0.58 | 0.37 | 0.88 | 0.79 | 0.60 | 0.38 | 0.91 | 0.81 | 0.61 | 0.40 | 0.94 | 0.84 | 0.64 | 0.41 | 0.95 | 0.85 | 0.64 | 0.41 | | | | |
| | | KW | 3.19 | 3.26 | 3.35 | 3.45 | 3.42 | 3.49 | 3.59 | 3.70 | 3.62 | 3.69 | 3.80 | 3.92 | 3.79 | 3.87 | 3.99 | 4.11 | 3.94 | 4.02 | 4.15 | 4.28 | 4.07 | 4.16 | 4.28 | 4.42 | | | | |
| | 1144 | MBh | 36.8 | 37.9 | 41.0 | 44.0 | 35.9 | 37.0 | 40.0 | 43.0 | 35.1 | 36.1 | 39.1 | 41.9 | 34.2 | 35.2 | 38.1 | 40.9 | 32.5 | 33.5 | 36.2 | 38.9 | 30.1 | 31.0 | 33.5 | 36.0 | | | | |
| | | S/T | 0.79 | 0.71 | 0.54 | 0.35 | 0.82 | 0.73 | 0.56 | 0.36 | 0.84 | 0.75 | 0.57 | 0.37 | 0.87 | 0.78 | 0.59 | 0.38 | 0.90 | 0.81 | 0.61 | 0.39 | 0.91 | 0.81 | 0.62 | 0.40 | | | | |
| | | KW | 3.15 | 3.21 | 3.30 | 3.40 | 3.37 | 3.43 | 3.54 | 3.64 | 3.56 | 3.63 | 3.74 | 3.86 | 3.73 | 3.81 | 3.93 | 4.05 | 3.88 | 3.96 | 4.08 | 4.21 | 4.01 | 4.09 | 4.22 | 4.35 | | | | |
| 80 | 1456 | MBh | 40.6 | 41.5 | 44.3 | 47.3 | 39.6 | 40.5 | 43.3 | 46.2 | 38.7 | 39.5 | 42.2 | 45.1 | 37.7 | 38.6 | 41.2 | 44.0 | 35.9 | 36.6 | 39.1 | 41.8 | 33.2 | 33.9 | 36.3 | 38.8 | | | | |
| | | S/T | 0.95 | 0.89 | 0.73 | 0.54 | 1.00 | 0.93 | 0.75 | 0.56 | 1.00 | 0.95 | 0.77 | 0.58 | 1.00 | 1.00 | 0.80 | 0.60 | 1.00 | 1.00 | 0.83 | 0.62 | 1.00 | 1.00 | 0.83 | 0.62 | | | | |
| | | KW | 3.24 | 3.30 | 3.40 | 3.50 | 3.47 | 3.54 | 3.64 | 3.76 | 3.67 | 3.75 | 3.86 | 3.98 | 3.85 | 3.93 | 4.05 | 4.18 | 4.00 | 4.09 | 4.21 | 4.35 | 4.13 | 4.22 | 4.35 | 4.49 | | | | |
| | 1300 | MBh | 39.4 | 40.2 | 43.0 | 46.0 | 38.5 | 39.3 | 42.0 | 44.9 | 37.6 | 38.4 | 41.0 | 43.8 | 36.6 | 37.4 | 40.0 | 42.8 | 34.8 | 35.6 | 38.0 | 40.6 | 32.2 | 32.9 | 35.2 | 37.6 | | | | |
| | | S/T | 0.91 | 0.85 | 0.69 | 0.52 | 0.94 | 0.88 | 0.72 | 0.54 | 0.96 | 0.90 | 0.74 | 0.55 | 1.00 | 0.93 | 0.76 | 0.57 | 1.00 | 0.97 | 0.79 | 0.59 | 1.00 | 0.98 | 0.80 | 0.59 | | | | |
| | | KW | 3.22 | 3.28 | 3.37 | 3.47 | 3.44 | 3.51 | 3.62 | 3.73 | 3.64 | 3.72 | 3.83 | 3.95 | 3.82 | 3.90 | 4.02 | 4.15 | 3.97 | 4.05 | 4.18 | 4.31 | 4.10 | 4.19 | 4.32 | 4.46 | | | | |
| | 1144 | MBh | 37.4 | 38.2 | 40.9 | 43.7 | 36.5 | 37.3 | 39.9 | 42.7 | 35.7 | 36.5 | 39.0 | 41.6 | 34.8 | 35.6 | 38.0 | 40.6 | 33.1 | 33.8 | 36.1 | 38.6 | 30.6 | 31.3 | 33.4 | 35.7 | | | | |
| | | S/T | 0.87 | 0.82 | 0.66 | 0.50 | 0.90 | 0.85 | 0.69 | 0.51 | 0.92 | 0.87 | 0.71 | 0.53 | 0.95 | 0.89 | 0.73 | 0.54 | 0.99 | 0.93 | 0.76 | 0.56 | 1.00 | 0.94 | 0.76 | 0.57 | | | | |
| | | KW | 3.17 | 3.23 | 3.32 | 3.42 | 3.39 | 3.46 | 3.56 | 3.67 | 3.59 | 3.66 | 3.77 | 3.89 | 3.76 | 3.84 | 3.96 | 4.08 | 3.91 | 3.99 | 4.11 | 4.24 | 4.04 | 4.12 | 4.25 | 4.39 | | | | |
| 85 | 1456 | MBh | 41.3 | 42.1 | 44.1 | 47.0 | 40.3 | 41.1 | 43.0 | 45.9 | 39.4 | 40.1 | 42.0 | 44.8 | 38.4 | 39.1 | 41.0 | 43.7 | 36.5 | 37.2 | 38.9 | 41.5 | 33.8 | 34.4 | 36.1 | 38.5 | | | | |
| | | S/T | 1.00 | 0.96 | 0.87 | 0.70 | 1.00 | 1.00 | 0.90 | 0.73 | 1.00 | 1.00 | 0.92 | 0.75 | 1.00 | 1.00 | 0.95 | 0.77 | 1.00 | 1.00 | 0.99 | 0.80 | 1.00 | 1.00 | 1.00 | 0.81 | | | | |
| | | KW | 3.26 | 3.33 | 3.42 | 3.53 | 3.50 | 3.57 | 3.67 | 3.78 | 3.70 | 3.78 | 3.89 | 4.01 | 3.88 | 3.96 | 4.08 | 4.21 | 4.03 | 4.12 | 4.25 | 4.38 | 4.17 | 4.25 | 4.39 | 4.53 | | | | |
| | 1300 | MBh | 40.1 | 40.9 | 42.8 | 45.6 | 39.1 | 39.9 | 41.8 | 44.6 | 38.2 | 39.0 | 40.8 | 43.5 | 37.3 | 38.0 | 39.8 | 42.5 | 35.4 | 36.1 | 37.8 | 40.3 | 32.8 | 33.4 | 35.0 | 37.4 | | | | |
| | | S/T | 0.95 | 0.92 | 0.83 | 0.67 | 0.99 | 0.95 | 0.86 | 0.70 | 1.00 | 0.98 | 0.88 | 0.71 | 1.00 | 1.00 | 0.91 | 0.74 | 1.00 | 1.00 | 0.94 | 0.77 | 1.00 | 1.00 | 0.95 | 0.77 | | | | |
| | | KW | 3.24 | 3.30 | 3.40 | 3.50 | 3.47 | 3.54 | 3.64 | 3.76 | 3.67 | 3.75 | 3.86 | 3.98 | 3.85 | 3.93 | 4.05 | 4.18 | 4.00 | 4.09 | 4.21 | 4.35 | 4.13 | 4.22 | 4.35 | 4.49 | | | | |
| | 1144 | MBh | 38.1 | 38.8 | 40.6 | 43.4 | 37.2 | 37.9 | 39.7 | 42.4 | 36.3 | 37.0 | 38.8 | 41.3 | 35.4 | 36.1 | 37.8 | 40.3 | 33.6 | 34.3 | 35.9 | 38.3 | 31.2 | 31.8 | 33.3 | 35.5 | | | | |
| | | S/T | 0.91 | 0.88 | 0.79 | 0.64 | 0.94 | 0.91 | 0.82 | 0.67 | 0.97 | 0.93 | 0.84 | 0.68 | 1.00 | 0.96 | 0.87 | 0.71 | 1.00 | 1.00 | 0.90 | 0.73 | 1.00 | 1.00 | 0.91 | 0.74 | | | | |
| | | KW | 3.19 | 3.25 | 3.35 | 3.45 | 3.42 | 3.49 | 3.59 | 3.70 | 3.62 | 3.69 | 3.80 | 3.92 | 3.79 | 3.87 | 3.99 | 4.11 | 3.94 | 4.02 | 4.15 | 4.28 | 4.07 | 4.15 | 4.28 | 4.42 | | | | |

* Entering Indoor Temperature - Degrees F. Dry Bulb Standard Rating

EXPANDED PERFORMANCE DATA (HEATING) - 3-1/2 TON

| | Outdoor Ambient Temperature - Degrees F. Dry Bulb | | | | | | | | | | | | | | | | | |
|-----|---|------|------|------|------|------|------|------|------|------|------|------|------|------|------|------|------|------|
| | 65 | 60 | 55 | 50 | 47 | 45 | 40 | 35 | 30 | 25 | 20 | 17 | 15 | 10 | 5 | 0 | -5 | -10 |
| MBh | 51.5 | 48.8 | 46.0 | 42.9 | 41.0 | 39.7 | 36.9 | 34.0 | 29.2 | 26.9 | 24.8 | 23.4 | 22.5 | 20.2 | 17.9 | 15.6 | 13.3 | 10.9 |
| T/R | 36.7 | 34.8 | 32.7 | 30.6 | 29.2 | 28.3 | 26.3 | 24.2 | 20.8 | 19.2 | 17.7 | 16.7 | 16.1 | 14.4 | 12.8 | 11.1 | 9.5 | 7.8 |
| KW | 4.02 | 3.95 | 3.87 | 3.80 | 3.76 | 3.72 | 3.65 | 3.58 | 3.70 | 3.62 | 3.54 | 3.50 | 3.46 | 3.38 | 3.30 | 3.22 | 3.14 | 3.06 |
| COP | 3.75 | 3.62 | 3.47 | 3.31 | 3.20 | 3.12 | 2.96 | 2.78 | 2.30 | 2.17 | 2.05 | 1.96 | 1.90 | 1.75 | 1.59 | 1.42 | 1.24 | 1.04 |
| EER | 12.8 | 12.4 | 11.9 | 11.3 | 10.9 | 10.7 | 10.1 | 9.5 | 7.9 | 7.4 | 7.0 | 6.7 | 6.5 | 6.0 | 5.4 | 4.8 | 4.2 | 3.6 |

EXPANDED PERFORMANCE DATA (COOLING) - 4 TON

| Airflow | | | Outdoor Ambient Temperature - Degrees F. Dry Bulb | | | | | | | | | | | | | | | | | | | | | | | |
|----------|------|-----|---|------|------|------|------|------|------|------|------|------|------|------|------|------|------|------|------|------|------|------|------|------|------|------|
| | | | 65 | | | | 75 | | | | 85 | | | | 95 | | | | 105 | | | | 115 | | | |
| | | | Entering Indoor Temperature - Degrees F. Wet Bulb | | | | | | | | | | | | | | | | | | | | | | | |
| IDB* CFM | | | 59 | 63 | 67 | 71 | 59 | 63 | 67 | 71 | 59 | 63 | 67 | 71 | 59 | 63 | 67 | 71 | 59 | 63 | 67 | 71 | 59 | 63 | 67 | 71 |
| 70 | 1792 | MBh | 46.5 | 48.2 | 52.9 | - | 45.5 | 47.1 | 51.6 | - | 44.4 | 46.0 | 50.4 | - | 43.3 | 44.9 | 49.2 | - | 41.1 | 42.6 | 46.7 | - | 38.1 | 39.5 | 43.3 | - |
| | | S/T | 0.78 | 0.65 | 0.45 | - | 0.81 | 0.68 | 0.47 | - | 0.83 | 0.70 | 0.48 | - | 0.86 | 0.72 | 0.50 | - | 0.89 | 0.74 | 0.52 | - | 0.90 | 0.75 | 0.52 | - |
| | | KW | 3.68 | 3.76 | 3.87 | - | 3.95 | 4.04 | 4.16 | - | 4.19 | 4.28 | 4.42 | - | 4.40 | 4.50 | 4.64 | - | 4.58 | 4.68 | 4.83 | - | 4.74 | 4.84 | 5.00 | - |
| | 1600 | MBh | 45.2 | 46.8 | 51.3 | - | 44.1 | 45.7 | 50.1 | - | 43.1 | 44.7 | 48.9 | - | 42.0 | 43.6 | 47.7 | - | 39.9 | 41.4 | 45.4 | - | 37.0 | 38.3 | 42.0 | - |
| | | S/T | 0.75 | 0.62 | 0.43 | - | 0.77 | 0.65 | 0.45 | - | 0.79 | 0.66 | 0.46 | - | 0.82 | 0.68 | 0.47 | - | 0.85 | 0.71 | 0.49 | - | 0.86 | 0.72 | 0.50 | - |
| | | KW | 3.66 | 3.73 | 3.84 | - | 3.92 | 4.01 | 4.13 | - | 4.16 | 4.25 | 4.38 | - | 4.37 | 4.46 | 4.60 | - | 4.55 | 4.65 | 4.79 | - | 4.70 | 4.80 | 4.96 | - |
| | 1408 | MBh | 42.9 | 44.5 | 48.8 | - | 41.9 | 43.5 | 47.6 | - | 40.9 | 42.4 | 46.5 | - | 39.9 | 41.4 | 45.4 | - | 37.9 | 39.3 | 43.1 | - | 35.1 | 36.4 | 39.9 | - |
| | | S/T | 0.72 | 0.60 | 0.41 | - | 0.74 | 0.62 | 0.43 | - | 0.76 | 0.64 | 0.44 | - | 0.79 | 0.66 | 0.45 | - | 0.81 | 0.68 | 0.47 | - | 0.82 | 0.69 | 0.48 | - |
| | | KW | 3.60 | 3.67 | 3.78 | - | 3.86 | 3.94 | 4.06 | - | 4.10 | 4.18 | 4.31 | - | 4.30 | 4.39 | 4.53 | - | 4.47 | 4.57 | 4.72 | - | 4.62 | 4.72 | 4.88 | - |
| 75 | 1792 | MBh | 47.3 | 48.7 | 52.8 | 56.6 | 46.2 | 47.6 | 51.5 | 55.3 | 45.1 | 46.5 | 50.3 | 54.0 | 44.0 | 45.3 | 49.1 | 52.7 | 41.8 | 43.1 | 46.6 | 50.0 | 38.7 | 39.9 | 43.2 | 46.3 |
| | | S/T | 0.89 | 0.80 | 0.60 | 0.39 | 0.92 | 0.83 | 0.62 | 0.40 | 0.95 | 0.85 | 0.64 | 0.41 | 0.98 | 0.87 | 0.66 | 0.43 | 1.00 | 0.91 | 0.69 | 0.44 | 1.00 | 0.91 | 0.69 | 0.45 |
| | | KW | 3.71 | 3.79 | 3.90 | 4.02 | 3.99 | 4.07 | 4.19 | 4.33 | 4.23 | 4.32 | 4.45 | 4.59 | 4.44 | 4.54 | 4.68 | 4.83 | 4.62 | 4.72 | 4.87 | 5.03 | 4.78 | 4.88 | 5.04 | 5.21 |
| | 1600 | MBh | 46.0 | 47.3 | 51.2 | 55.0 | 44.9 | 46.2 | 50.0 | 53.7 | 43.8 | 45.1 | 48.8 | 52.4 | 42.8 | 44.0 | 47.6 | 51.1 | 40.6 | 41.8 | 45.3 | 48.6 | 37.6 | 38.7 | 41.9 | 45.0 |
| | | S/T | 0.85 | 0.76 | 0.57 | 0.37 | 0.88 | 0.79 | 0.60 | 0.38 | 0.90 | 0.81 | 0.61 | 0.39 | 0.93 | 0.83 | 0.63 | 0.41 | 0.97 | 0.86 | 0.65 | 0.42 | 0.98 | 0.87 | 0.66 | 0.42 |
| | | KW | 3.68 | 3.76 | 3.87 | 3.99 | 3.96 | 4.04 | 4.16 | 4.29 | 4.19 | 4.28 | 4.42 | 4.56 | 4.41 | 4.50 | 4.64 | 4.79 | 4.58 | 4.68 | 4.83 | 4.99 | 4.74 | 4.84 | 5.00 | 5.16 |
| | 1408 | MBh | 43.7 | 45.0 | 48.7 | 52.2 | 42.6 | 43.9 | 47.5 | 51.0 | 41.6 | 42.9 | 46.4 | 49.8 | 40.6 | 41.8 | 45.3 | 48.6 | 38.6 | 39.7 | 43.0 | 46.1 | 35.7 | 36.8 | 39.8 | 42.7 |
| | | S/T | 0.81 | 0.73 | 0.55 | 0.35 | 0.84 | 0.75 | 0.57 | 0.37 | 0.86 | 0.77 | 0.59 | 0.38 | 0.89 | 0.80 | 0.60 | 0.39 | 0.93 | 0.83 | 0.63 | 0.40 | 0.93 | 0.84 | 0.63 | 0.41 |
| | | KW | 3.63 | 3.70 | 3.81 | 3.93 | 3.89 | 3.97 | 4.10 | 4.22 | 4.13 | 4.21 | 4.35 | 4.48 | 4.34 | 4.43 | 4.57 | 4.71 | 4.51 | 4.61 | 4.75 | 4.91 | 4.66 | 4.76 | 4.92 | 5.08 |
| 80 | 1792 | MBh | 48.2 | 49.2 | 52.6 | 56.2 | 47.1 | 48.1 | 51.4 | 54.9 | 45.9 | 46.9 | 50.1 | 53.6 | 44.8 | 45.8 | 48.9 | 52.3 | 42.6 | 43.5 | 46.5 | 49.7 | 39.4 | 40.3 | 43.1 | 46.0 |
| | | S/T | 1.00 | 0.92 | 0.75 | 0.56 | 1.00 | 0.95 | 0.77 | 0.58 | 1.00 | 1.00 | 0.79 | 0.59 | 1.00 | 1.00 | 0.82 | 0.61 | 1.00 | 1.00 | 0.85 | 0.63 | 1.00 | 1.00 | 0.86 | 0.64 |
| | | KW | 3.74 | 3.82 | 3.93 | 4.05 | 4.02 | 4.10 | 4.23 | 4.36 | 4.26 | 4.35 | 4.49 | 4.63 | 4.48 | 4.57 | 4.72 | 4.87 | 4.66 | 4.76 | 4.91 | 5.07 | 4.82 | 4.92 | 5.08 | 5.25 |
| | 1600 | MBh | 46.8 | 47.8 | 51.1 | 54.6 | 45.7 | 46.7 | 49.9 | 53.3 | 44.6 | 45.6 | 48.7 | 52.0 | 43.5 | 44.5 | 47.5 | 50.8 | 41.3 | 42.2 | 45.1 | 48.2 | 38.3 | 39.1 | 41.8 | 44.7 |
| | | S/T | 0.93 | 0.87 | 0.71 | 0.53 | 0.97 | 0.91 | 0.74 | 0.55 | 0.99 | 0.93 | 0.76 | 0.56 | 1.00 | 0.96 | 0.78 | 0.58 | 1.00 | 0.99 | 0.81 | 0.61 | 1.00 | 1.00 | 0.82 | 0.61 |
| | | KW | 3.71 | 3.79 | 3.90 | 4.02 | 3.99 | 4.07 | 4.19 | 4.33 | 4.23 | 4.32 | 4.45 | 4.59 | 4.44 | 4.54 | 4.68 | 4.83 | 4.62 | 4.72 | 4.87 | 5.03 | 4.78 | 4.88 | 5.04 | 5.21 |
| | 1408 | MBh | 44.4 | 45.4 | 48.5 | 51.9 | 43.4 | 44.3 | 47.4 | 50.7 | 42.4 | 43.3 | 46.3 | 49.4 | 41.3 | 42.2 | 45.1 | 48.2 | 39.3 | 40.1 | 42.9 | 45.8 | 36.4 | 37.2 | 39.7 | 42.4 |
| | | S/T | 0.89 | 0.84 | 0.68 | 0.51 | 0.92 | 0.87 | 0.71 | 0.53 | 0.95 | 0.89 | 0.72 | 0.54 | 0.98 | 0.92 | 0.75 | 0.56 | 1.02 | 0.95 | 0.78 | 0.58 | 1.02 | 0.96 | 0.78 | 0.58 |
| | | KW | 3.66 | 3.73 | 3.84 | 3.96 | 3.92 | 4.01 | 4.13 | 4.26 | 4.16 | 4.25 | 4.38 | 4.52 | 4.37 | 4.46 | 4.60 | 4.75 | 4.55 | 4.65 | 4.79 | 4.95 | 4.70 | 4.80 | 4.96 | 5.12 |
| 85 | 1792 | MBh | 49.0 | 50.0 | 52.3 | 55.8 | 47.9 | 48.8 | 51.1 | 54.5 | 46.7 | 47.6 | 49.9 | 53.2 | 45.6 | 46.5 | 48.7 | 51.9 | 43.3 | 44.2 | 46.2 | 49.3 | 40.1 | 40.9 | 42.8 | 45.7 |
| | | S/T | 1.00 | 0.99 | 0.89 | 0.72 | 1.00 | 1.00 | 0.92 | 0.75 | 1.00 | 1.00 | 0.95 | 0.77 | 1.00 | 1.00 | 0.98 | 0.79 | 1.00 | 1.00 | 1.00 | 0.82 | 1.00 | 1.00 | 1.00 | 0.83 |
| | | KW | 3.77 | 3.85 | 3.96 | 4.09 | 4.05 | 4.13 | 4.26 | 4.40 | 4.30 | 4.39 | 4.52 | 4.67 | 4.51 | 4.61 | 4.76 | 4.91 | 4.70 | 4.80 | 4.95 | 5.12 | 4.86 | 4.96 | 5.12 | 5.29 |
| | 1600 | MBh | 47.6 | 48.5 | 50.8 | 54.2 | 46.5 | 47.4 | 49.6 | 52.9 | 45.4 | 46.3 | 48.4 | 51.7 | 44.3 | 45.1 | 47.3 | 50.4 | 42.1 | 42.9 | 44.9 | 47.9 | 39.0 | 39.7 | 41.6 | 44.4 |
| | | S/T | 0.98 | 0.94 | 0.85 | 0.69 | 1.00 | 0.98 | 0.88 | 0.72 | 1.00 | 1.00 | 0.90 | 0.73 | 1.00 | 1.00 | 0.93 | 0.76 | 1.00 | 1.00 | 0.97 | 0.79 | 1.00 | 1.00 | 0.98 | 0.79 |
| | | KW | 3.74 | 3.82 | 3.93 | 4.05 | 4.02 | 4.10 | 4.23 | 4.36 | 4.26 | 4.35 | 4.49 | 4.63 | 4.48 | 4.57 | 4.72 | 4.87 | 4.66 | 4.76 | 4.91 | 5.07 | 4.82 | 4.92 | 5.08 | 5.25 |
| | 1408 | MBh | 45.2 | 46.1 | 48.3 | 51.5 | 44.2 | 45.0 | 47.1 | 50.3 | 43.1 | 43.9 | 46.0 | 49.1 | 42.1 | 42.9 | 44.9 | 47.9 | 40.0 | 40.7 | 42.7 | 45.5 | 37.0 | 37.7 | 39.5 | 42.2 |
| | | S/T | 0.94 | 0.90 | 0.81 | 0.66 | 0.97 | 0.94 | 0.84 | 0.68 | 0.99 | 0.96 | 0.87 | 0.70 | 1.00 | 0.99 | 0.89 | 0.72 | 1.00 | 1.00 | 0.93 | 0.75 | 1.00 | 1.00 | 0.94 | 0.76 |
| | | KW | 3.68 | 3.76 | 3.87 | 3.99 | 3.95 | 4.04 | 4.16 | 4.29 | 4.19 | 4.28 | 4.42 | 4.56 | 4.40 | 4.50 | 4.64 | 4.79 | 4.58 | 4.68 | 4.83 | 4.99 | 4.74 | 4.84 | 5.00 | 5.16 |

* Entering Indoor Temperature - Degrees F. Dry Bulb Standard Rating

EXPANDED PERFORMANCE DATA (HEATING) - 4 TON

| | Outdoor Ambient Temperature - Degrees F. Dry Bulb | | | | | | | | | | | | | | | | | |
|-----|---|------|------|------|------|------|------|------|------|------|------|------|------|------|------|------|------|------|
| | 65 | 60 | 55 | 50 | 47 | 45 | 40 | 35 | 30 | 25 | 20 | 17 | 15 | 10 | 5 | 0 | -5 | -10 |
| MBh | 54.7 | 51.8 | 48.8 | 45.5 | 43.5 | 42.2 | 39.2 | 36.1 | 30.4 | 28.1 | 25.8 | 24.4 | 23.5 | 21.1 | 18.7 | 16.3 | 13.9 | 11.4 |
| T/R | 31.6 | 30.0 | 28.2 | 26.4 | 25.2 | 24.4 | 22.7 | 20.9 | 17.6 | 16.2 | 15.0 | 14.1 | 13.6 | 12.2 | 10.8 | 9.4 | 8.0 | 6.6 |
| KW | 4.38 | 4.30 | 4.22 | 4.13 | 4.09 | 4.05 | 3.97 | 3.89 | 3.94 | 3.86 | 3.77 | 3.72 | 3.69 | 3.60 | 3.51 | 3.43 | 3.34 | 3.26 |
| COP | 3.65 | 3.52 | 3.38 | 3.23 | 3.12 | 3.05 | 2.89 | 2.72 | 2.26 | 2.13 | 2.01 | 1.92 | 1.87 | 1.71 | 1.56 | 1.39 | 1.22 | 1.02 |
| EER | 12.5 | 12.0 | 11.6 | 11.0 | 10.6 | 10.4 | 9.9 | 9.3 | 7.7 | 7.3 | 6.9 | 6.6 | 6.4 | 5.9 | 5.3 | 4.8 | 4.2 | 3.5 |

EXPANDED PERFORMANCE DATA (COOLING) - 5 TON

| Airflow IDB* CFM | | | Outdoor Ambient Temperature - Degrees F. Dry Bulb | | | | | | | | | | | | | | | | | | | | | | | | |
|---------------------|------|-----|---|------|------|------|------|------|------|------|------|------|------|------|------|------|------|------|------|------|------|------|------|------|------|------|----|
| | | | 65 | | | | 75 | | | | 85 | | | | 95 | | | | 105 | | | | 115 | | | | |
| | | | Entering Indoor Temperature - Degrees F. Wet Bulb | | | | | | | | | | | | | | | | | | | | | | | | |
| | | | 59 | 63 | 67 | 71 | 59 | 63 | 67 | 71 | 59 | 63 | 67 | 71 | 59 | 63 | 67 | 71 | 59 | 63 | 67 | 71 | 59 | 63 | 67 | 71 | 59 |
| 70 | 2240 | MBh | 55.9 | 57.9 | 63.4 | - | 54.6 | 56.5 | 62.0 | - | 53.3 | 55.2 | 60.5 | - | 52.0 | 53.9 | 59.0 | - | 49.4 | 51.2 | 56.1 | - | 45.7 | 47.4 | 51.9 | - | |
| | | S/T | 0.78 | 0.65 | 0.45 | - | 0.81 | 0.68 | 0.47 | - | 0.83 | 0.70 | 0.48 | - | 0.86 | 0.72 | 0.50 | - | 0.89 | 0.74 | 0.52 | - | 0.90 | 0.75 | 0.52 | - | |
| | | KW | 4.68 | 4.77 | 4.92 | - | 5.02 | 5.13 | 5.28 | - | 5.32 | 5.44 | 5.60 | - | 5.59 | 5.71 | 5.89 | - | 5.82 | 5.94 | 6.13 | - | 6.01 | 6.14 | 6.34 | - | |
| | 2000 | MBh | 54.2 | 56.2 | 61.6 | - | 53.0 | 54.9 | 60.1 | - | 51.7 | 53.6 | 58.7 | - | 50.4 | 52.3 | 57.3 | - | 47.9 | 49.7 | 54.4 | - | 44.4 | 46.0 | 50.4 | - | |
| | | S/T | 0.75 | 0.62 | 0.43 | - | 0.77 | 0.65 | 0.45 | - | 0.79 | 0.66 | 0.46 | - | 0.82 | 0.68 | 0.47 | - | 0.85 | 0.71 | 0.49 | - | 0.86 | 0.72 | 0.50 | - | |
| | | KW | 4.65 | 4.74 | 4.88 | - | 4.98 | 5.09 | 5.24 | - | 5.28 | 5.39 | 5.56 | - | 5.55 | 5.66 | 5.84 | - | 5.77 | 5.89 | 6.08 | - | 5.96 | 6.09 | 6.29 | - | |
| | 1760 | MBh | 51.5 | 53.4 | 58.5 | - | 50.3 | 52.2 | 57.1 | - | 49.1 | 50.9 | 55.8 | - | 47.9 | 49.7 | 54.4 | - | 45.5 | 47.2 | 51.7 | - | 42.2 | 43.7 | 47.9 | - | |
| | | S/T | 0.72 | 0.60 | 0.41 | - | 0.74 | 0.62 | 0.43 | - | 0.76 | 0.64 | 0.44 | - | 0.79 | 0.66 | 0.45 | - | 0.81 | 0.68 | 0.47 | - | 0.82 | 0.69 | 0.48 | - | |
| | | KW | 4.58 | 4.67 | 4.81 | - | 4.91 | 5.01 | 5.16 | - | 5.20 | 5.31 | 5.47 | - | 5.46 | 5.57 | 5.75 | - | 5.68 | 5.80 | 5.98 | - | 5.87 | 5.99 | 6.18 | - | |
| 75 | 2240 | MBh | 56.8 | 58.5 | 63.3 | 67.9 | 55.5 | 57.1 | 61.8 | 66.4 | 54.2 | 55.8 | 60.4 | 64.8 | 52.8 | 54.4 | 58.9 | 63.2 | 50.2 | 51.7 | 55.9 | 60.0 | 46.5 | 47.9 | 51.8 | 55.6 | |
| | | S/T | 0.89 | 0.80 | 0.60 | 0.39 | 0.92 | 0.83 | 0.62 | 0.40 | 0.95 | 0.85 | 0.64 | 0.41 | 0.98 | 0.87 | 0.66 | 0.43 | 1.00 | 0.91 | 0.69 | 0.44 | 1.00 | 0.91 | 0.69 | 0.45 | |
| | | KW | 4.72 | 4.81 | 4.96 | 5.11 | 5.06 | 5.17 | 5.32 | 5.49 | 5.37 | 5.48 | 5.65 | 5.83 | 5.64 | 5.76 | 5.94 | 6.13 | 5.86 | 5.99 | 6.18 | 6.38 | 6.06 | 6.19 | 6.39 | 6.60 | |
| | 2000 | MBh | 55.1 | 56.8 | 61.5 | 66.0 | 53.9 | 55.5 | 60.0 | 64.4 | 52.6 | 54.1 | 58.6 | 62.9 | 51.3 | 52.8 | 57.2 | 61.4 | 48.7 | 50.2 | 54.3 | 58.3 | 45.1 | 46.5 | 50.3 | 54.0 | |
| | | S/T | 0.85 | 0.76 | 0.57 | 0.37 | 0.88 | 0.79 | 0.60 | 0.38 | 0.90 | 0.81 | 0.61 | 0.39 | 0.93 | 0.83 | 0.63 | 0.41 | 0.97 | 0.86 | 0.65 | 0.42 | 0.98 | 0.87 | 0.66 | 0.42 | |
| | | KW | 4.68 | 4.78 | 4.92 | 5.07 | 5.02 | 5.13 | 5.28 | 5.45 | 5.33 | 5.44 | 5.61 | 5.78 | 5.59 | 5.71 | 5.89 | 6.08 | 5.82 | 5.94 | 6.13 | 6.33 | 6.01 | 6.14 | 6.34 | 6.55 | |
| | 1760 | MBh | 52.4 | 53.9 | 58.4 | 62.7 | 51.2 | 52.7 | 57.0 | 61.2 | 50.0 | 51.4 | 55.7 | 59.7 | 48.7 | 50.2 | 54.3 | 58.3 | 46.3 | 47.7 | 51.6 | 55.4 | 42.9 | 44.2 | 47.8 | 51.3 | |
| | | S/T | 0.81 | 0.73 | 0.55 | 0.35 | 0.84 | 0.75 | 0.57 | 0.37 | 0.86 | 0.77 | 0.59 | 0.38 | 0.89 | 0.80 | 0.60 | 0.39 | 0.93 | 0.83 | 0.63 | 0.40 | 0.93 | 0.84 | 0.63 | 0.41 | |
| | | KW | 4.61 | 4.70 | 4.84 | 4.99 | 4.95 | 5.05 | 5.20 | 5.36 | 5.24 | 5.35 | 5.52 | 5.69 | 5.50 | 5.62 | 5.79 | 5.98 | 5.72 | 5.85 | 6.03 | 6.23 | 5.92 | 6.04 | 6.24 | 6.44 | |
| 80 | 2240 | MBh | 57.8 | 59.1 | 63.1 | 67.5 | 56.5 | 57.7 | 61.6 | 65.9 | 55.1 | 56.3 | 60.2 | 64.3 | 53.8 | 55.0 | 58.7 | 62.8 | 51.1 | 52.2 | 55.8 | 59.6 | 47.3 | 48.4 | 51.7 | 55.2 | |
| | | S/T | 1.00 | 0.92 | 0.75 | 0.56 | 1.00 | 0.95 | 0.77 | 0.58 | 1.00 | 1.00 | 0.79 | 0.59 | 1.00 | 1.00 | 0.82 | 0.61 | 1.00 | 1.00 | 0.85 | 0.63 | 1.00 | 1.00 | 0.86 | 0.64 | |
| | | KW | 4.75 | 4.85 | 4.99 | 5.15 | 5.10 | 5.21 | 5.37 | 5.54 | 5.41 | 5.52 | 5.70 | 5.88 | 5.68 | 5.80 | 5.99 | 6.18 | 5.91 | 6.04 | 6.23 | 6.43 | 6.11 | 6.24 | 6.44 | 6.66 | |
| | 2000 | MBh | 56.1 | 57.4 | 61.3 | 65.5 | 54.8 | 56.0 | 59.9 | 64.0 | 53.5 | 54.7 | 58.4 | 62.5 | 52.2 | 53.4 | 57.0 | 60.9 | 49.6 | 50.7 | 54.2 | 57.9 | 45.9 | 46.9 | 50.2 | 53.6 | |
| | | S/T | 0.93 | 0.87 | 0.71 | 0.53 | 0.97 | 0.91 | 0.74 | 0.55 | 0.99 | 0.93 | 0.76 | 0.56 | 1.00 | 0.96 | 0.78 | 0.58 | 1.00 | 0.99 | 0.81 | 0.61 | 1.00 | 1.00 | 0.82 | 0.61 | |
| | | KW | 4.72 | 4.81 | 4.96 | 5.11 | 5.06 | 5.17 | 5.33 | 5.49 | 5.37 | 5.48 | 5.65 | 5.83 | 5.64 | 5.76 | 5.94 | 6.13 | 5.86 | 5.99 | 6.18 | 6.38 | 6.06 | 6.19 | 6.39 | 6.60 | |
| | 1760 | MBh | 53.3 | 54.5 | 58.2 | 62.2 | 52.1 | 53.2 | 56.9 | 60.8 | 50.8 | 52.0 | 55.5 | 59.3 | 49.6 | 50.7 | 54.2 | 57.9 | 47.1 | 48.2 | 51.4 | 55.0 | 43.6 | 44.6 | 47.7 | 50.9 | |
| | | S/T | 0.89 | 0.84 | 0.68 | 0.51 | 0.92 | 0.87 | 0.71 | 0.53 | 0.95 | 0.89 | 0.72 | 0.54 | 0.98 | 0.92 | 0.75 | 0.56 | 1.02 | 0.95 | 0.78 | 0.58 | 1.02 | 0.96 | 0.78 | 0.58 | |
| | | KW | 4.65 | 4.74 | 4.88 | 5.03 | 4.98 | 5.09 | 5.24 | 5.41 | 5.28 | 5.39 | 5.56 | 5.74 | 5.55 | 5.66 | 5.84 | 6.03 | 5.77 | 5.89 | 6.08 | 6.28 | 5.96 | 6.09 | 6.29 | 6.49 | |
| 85 | 2240 | MBh | 58.8 | 60.0 | 62.8 | 67.0 | 57.5 | 58.6 | 61.3 | 65.4 | 56.1 | 57.2 | 59.9 | 63.9 | 54.7 | 55.8 | 58.4 | 62.3 | 52.0 | 53.0 | 55.5 | 59.2 | 48.2 | 49.1 | 51.4 | 54.8 | |
| | | S/T | 1.00 | 0.99 | 0.89 | 0.72 | 1.00 | 1.00 | 0.92 | 0.75 | 1.00 | 1.00 | 0.95 | 0.77 | 1.00 | 1.00 | 0.98 | 0.79 | 1.00 | 1.00 | 1.00 | 0.82 | 1.00 | 1.00 | 1.00 | 0.83 | |
| | | KW | 4.79 | 4.89 | 5.03 | 5.19 | 5.14 | 5.25 | 5.41 | 5.58 | 5.45 | 5.57 | 5.74 | 5.92 | 5.73 | 5.85 | 6.03 | 6.23 | 5.96 | 6.09 | 6.28 | 6.49 | 6.16 | 6.29 | 6.50 | 6.71 | |
| | 2000 | MBh | 57.1 | 58.2 | 61.0 | 65.0 | 55.8 | 56.9 | 59.6 | 63.5 | 54.5 | 55.5 | 58.1 | 62.0 | 53.1 | 54.2 | 56.7 | 60.5 | 50.5 | 51.4 | 53.9 | 57.5 | 46.7 | 47.7 | 49.9 | 53.2 | |
| | | S/T | 0.98 | 0.94 | 0.85 | 0.69 | 1.00 | 0.98 | 0.88 | 0.72 | 1.00 | 1.00 | 0.90 | 0.73 | 1.00 | 1.00 | 0.93 | 0.76 | 1.00 | 1.00 | 0.97 | 0.79 | 1.00 | 1.00 | 0.98 | 0.79 | |
| | | KW | 4.75 | 4.85 | 4.99 | 5.15 | 5.10 | 5.21 | 5.37 | 5.54 | 5.41 | 5.52 | 5.70 | 5.88 | 5.68 | 5.80 | 5.99 | 6.18 | 5.91 | 6.04 | 6.23 | 6.43 | 6.11 | 6.24 | 6.44 | 6.66 | |
| | 1760 | MBh | 54.3 | 55.3 | 57.9 | 61.8 | 53.0 | 54.0 | 56.6 | 60.4 | 51.7 | 52.7 | 55.2 | 58.9 | 50.5 | 51.4 | 53.9 | 57.5 | 47.9 | 48.9 | 51.2 | 54.6 | 44.4 | 45.3 | 47.4 | 50.6 | |
| | | S/T | 0.94 | 0.90 | 0.81 | 0.66 | 0.97 | 0.94 | 0.84 | 0.68 | 0.99 | 0.96 | 0.87 | 0.70 | 1.00 | 0.99 | 0.89 | 0.72 | 1.00 | 1.00 | 0.93 | 0.75 | 1.00 | 1.00 | 0.94 | 0.76 | |
| | | KW | 4.68 | 4.77 | 4.92 | 5.07 | 5.02 | 5.13 | 5.28 | 5.45 | 5.32 | 5.44 | 5.60 | 5.78 | 5.59 | 5.71 | 5.89 | 6.08 | 5.82 | 5.94 | 6.13 | 6.33 | 6.01 | 6.14 | 6.34 | 6.55 | |

* Entering Indoor Temperature - Degrees F. Dry Bulb 57.0 Standard Rating

EXPANDED PERFORMANCE DATA (HEATING) - 5 TON

| | Outdoor Ambient Temperature - Degrees F. Dry Bulb | | | | | | | | | | | | | | | | | |
|-----|---|------|------|------|------|------|------|------|------|------|------|------|------|------|------|------|------|------|
| | 65 | 60 | 55 | 50 | 47 | 45 | 40 | 35 | 30 | 25 | 20 | 17 | 15 | 10 | 5 | 0 | -5 | -10 |
| MBh | 70.4 | 66.6 | 62.8 | 58.6 | 56.0 | 54.3 | 50.4 | 46.5 | 39.4 | 36.3 | 33.5 | 31.6 | 30.4 | 27.3 | 24.2 | 21.1 | 18.0 | 14.8 |
| T/R | 32.6 | 30.9 | 29.1 | 27.1 | 25.9 | 25.1 | 23.3 | 21.5 | 18.2 | 16.8 | 15.5 | 14.6 | 14.1 | 12.6 | 11.2 | 9.8 | 8.3 | 6.8 |
| KW | 5.43 | 5.33 | 5.23 | 5.12 | 5.07 | 5.02 | 4.92 | 4.82 | 4.85 | 4.74 | 4.64 | 4.58 | 4.54 | 4.43 | 4.33 | 4.23 | 4.12 | 4.02 |
| COP | 3.79 | 3.66 | 3.52 | 3.35 | 3.24 | 3.16 | 3.00 | 2.82 | 2.38 | 2.24 | 2.11 | 2.02 | 1.96 | 1.80 | 1.64 | 1.46 | 1.28 | 1.07 |
| EER | 13.0 | 12.5 | 12.0 | 11.4 | 11.1 | 10.8 | 10.2 | 9.6 | 8.1 | 7.7 | 7.2 | 6.9 | 6.7 | 6.2 | 5.6 | 5.0 | 4.4 | 3.7 |

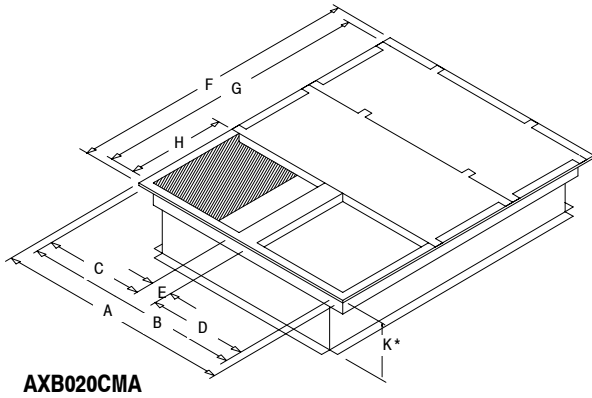
ACCESSORIES: ROOF CURBS AND ECONOMIZERS

These curbs are designed specifically for use with our single package air conditioners. They are constructed of heavy gauge steel and designed for water tight installation.

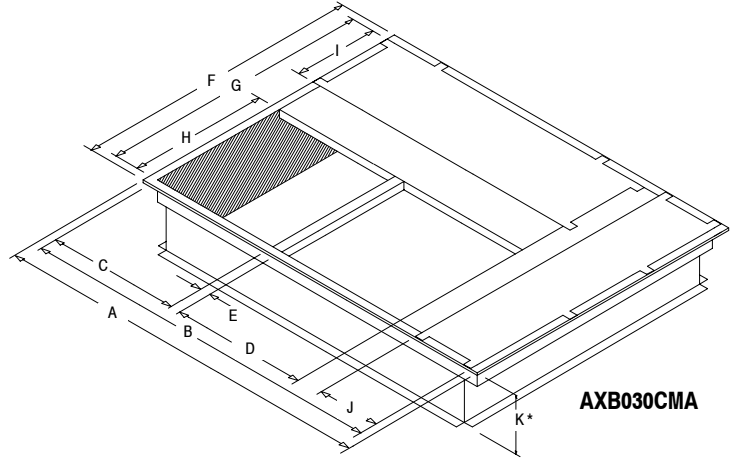
ROOF CURB DIMENSIONS (INCHES)

| Model No. | Used With | A | B | C | D | E | F | G | H | I | J | K** |
|-----------|----------------|--------|--------|----|----|-------|--------|--------|----|----|----|-----|
| AXB020C_A | 2 to 3 Ton | 42-3/4 | 39-3/4 | 18 | 18 | 3-3/4 | 42-3/4 | 39-3/4 | 18 | - | - | 14 |
| AXB030C_A | 3-1/2 to 5 Ton | 67-3/4 | 64-3/4 | 23 | 23 | 2-1/2 | 42-3/4 | 39-3/4 | 23 | 12 | 12 | 14 |

** ROOF CURBS ARE ALSO AVAILABLE IN 8" AND 24" HEIGHTS (K DIMENSIONS)



AXB020CMA

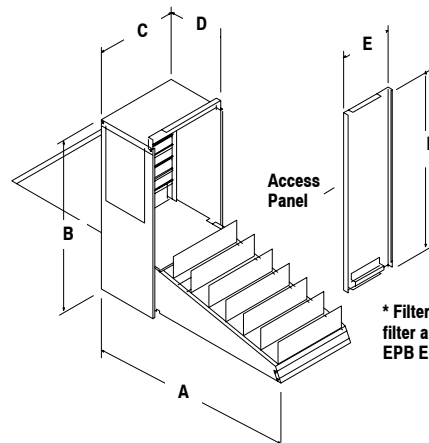


AXB030CMA

| Description | Mainline Model Number | Used on |
|-------------|-----------------------|----------------|
| 8" | AXB020CLA | 2 to 3 Ton |
| | AXB030CLA | 3-1/2 to 5 Ton |
| 14" | AXB020CMA | 2 to 3 Ton |
| | AXB030CMA | 3-1/2 to 5 Ton |
| 24" | AXB020CHA | 2 to 3 Ton |
| | AXB030CHA | 3-1/2 to 5 Ton |

SLIDE IN ECONOMIZERS-DOWN DISCHARGE

- Provides outdoor air ventilation, automatic free cooling when favorable outside conditions exist, and pressure relief for proper air balance.
- Interconnecting wiring furnished
- 24 volt system
- Center mounted, dual action, dampers with gasketing ensure proper seal.
- Barometric pressure relief damper is standard.



* Filter access panel, filter rack and filter are included with AXB020EMB & EPB Economizers.

| Description | Model Number | Used on |
|---------------------------------|--------------|------------|
| Fully Modulating ⁽¹⁾ | AXB020EMB | 2 to 3 Ton |
| Three Position ⁽¹⁾ | AXB020EPB | 2 to 3 Ton |

⁽¹⁾ Filter Rack assembly and one 18" x 25" filter included.

* Indicates color change: A=Gray; B=Architectural Stone

| Unit Model Number | Economizer Model No. | A | B | C | D | E | F |
|-------------------|----------------------|----|--------|--------|--------|-------|--------|
| 2 to 3 Ton | AXB20E_B | 29 | 27-1/2 | 12-3/4 | 10-7/8 | 7-1/2 | 29 |
| 3-1/2 to 5 Ton | AXB30E_B | 35 | 31 | 14-3/4 | 10-7/8 | 9-3/8 | 32-1/2 |

| Description | Model Number | Used on |
|---------------------------------|--------------|----------------|
| Fully Modulating ⁽²⁾ | AXB030EMB | 3-1/2 to 5 Ton |
| Three Position ⁽²⁾ | AXB030EPB | 3-1/2 to 5 Ton |

⁽²⁾ Requires (2) 2" x 20" x 30" filters (field supplied).

ACCESSORIES (CONT...)

ECONOMIZERS-HORIZONTAL DISCHARGE

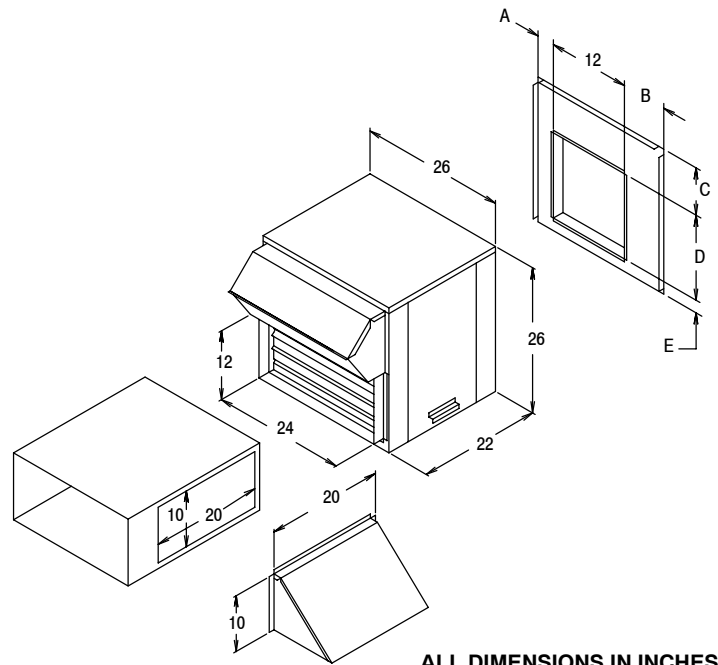
- Provides outdoor air ventilation, automatic free cooling when favorable outside conditions exist, and pressure relief for proper air balance.
- Interconnecting wiring and 18" x 25" air filter furnished.
- 24 volt system
- Center mounted, dual action, dampers with gasketing ensure proper seal.
- Barometric pressure relief damper is standard.

| Description | Model Number | Used on |
|---------------------------------|--------------|------------|
| Fully Modulating ⁽¹⁾ | AXB020HEB | 2 to 3 Ton |
| Three Position ⁽¹⁾ | AXB020HPB | 2 to 3 Ton |

⁽¹⁾ Air filters included.

| Description | Model Number | Used on |
|---------------------------------|--------------|----------------|
| Fully Modulating ⁽¹⁾ | AXB030HEB | 3-1/2 to 5 Ton |
| Three Position ⁽¹⁾ | AXB030HPB | 3-1/2 to 5 Ton |

⁽¹⁾ Air filters included.



ALL DIMENSIONS IN INCHES

| Unit Size | Economizer Model No. | A | B | C | D | E |
|----------------|----------------------|-------|-------|-------|--------|---|
| 2 to 3 Ton | AXB020H_B | 5 | 8-3/4 | 8-1/2 | 14-1/4 | 3 |
| 3-1/2 to 5 Ton | AXB030H_B | 9-3/4 | 4 | 6 | 18-3/4 | 1 |

OUTDOOR AIR DAMPERS

| Description | Model Number | Used on |
|-----------------|--------------|----------------|
| Manual - 25% | AXB020FAB | 2 to 3 Ton |
| | AXB030FAB | 3-1/2 to 5 Ton |
| Motorized - 25% | AXB020FMB | 2 to 3 Ton |
| | AXB030FMB | 3-1/2 to 5 Ton |

COIL PROTECTION

| Description | Model Number | Used on |
|-------------|--------------|----------------|
| Hail Guard | AXB020HGB | 2 to 3 Ton |
| | AXB030HGB | 3-1/2 to 5 Ton |

FILTER RACK - DOWNFLOW

| Description | Model Number | Used on |
|---------------------------|--------------|------------|
| * Filter Rack, Return Air | AXB020FKA | 2 to 3 Ton |

FILTER RACK - HORIZONTAL

| Description | Model Number | Used on |
|---------------------------|--------------|------------|
| * Filter Rack, Return Air | AXB020FHB | 2 to 3 Ton |

*Must use with outdoor air dampers. Includes 18" x 25" filter.

CONCENTRIC DUCT KITS

| Description | Mainline Model Number | Used on |
|-----------------------|-----------------------|----------------|
| Transition | AXB020CTA | 2 to 3 Ton |
| | AXB030CTA | 3-1/2 to 5 Ton |
| Grille, Flush Mount * | AXB020CFA | 2 to 3 Ton |
| Grille, Step Down * | AXB020CSA | 2 to 3 Ton |
| Grille, Flush Mount * | AXB030CFA | 3-1/2 to 5 Ton |
| Grille, Step Down * | AXB030CSA | 3-1/2 to 5 Ton |

* Includes grille and diffuser / transition box.

LOW AMBIENT CONTROLS

| Description | Service Parts Number | Used on |
|-------------|----------------------|----------------|
| To 0° F | 1148232* | 2 to 3 Ton |
| To 0° F | 1148233* | 3-1/2 to 5 Ton |

*Available through Service Parts only.

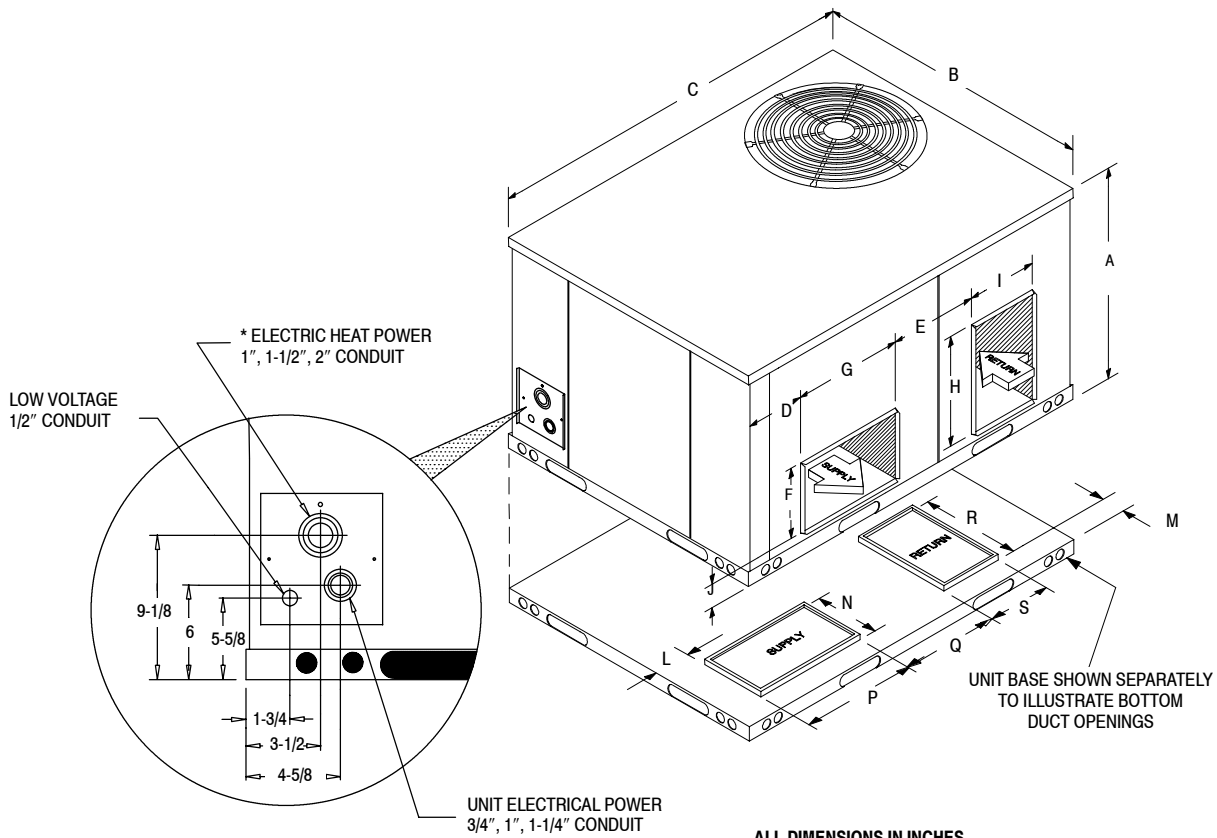
OUTDOOR THERMOSTAT

| Description | Model Number | Used on |
|---------------------------------|--------------|---|
| Outdoor Thermostat (Two-Stage) | AMA001OTB | Electric Heat Accessory 15 KW and Above |
| Outdoor Thermostat (Four-Stage) | AMA002OTB | Electric Heat Accessory 25 KW and 30 KW |

MODEL NUMBER IDENTIFICATION GUIDE

| | | | | | | | | | |
|--|----------|----------|----------|----------|----------------|----------|----------|----------|--|
| MODEL NUMBER | P | H | A | D | 24 | N | 1 | K | A* |
| PRODUCT FAMILY P = Single Package | | | | | | | | | Product produced after January 1995 will be Architectural Stone color and will be identified by an "A" at the end of the Sales number on the carton. |
| UNIT TYPE H = Heat Pump | | | | | | | | | VOLTAGE K = 208 / 230-1-60 |
| DESIGN SERIES | | | | | | | | | BLOWER OPTIONS 1 = Standard Direct Drive |
| RESIDENTIAL UNIT INDICATOR D = Ultra-High Efficiency | | | | | | | | | HEAT INPUT N = No Heat Installed Optional electric heat available |
| | | | | | | | | | COOLING CAPACITY (NOMINAL BTUH) |
| | | | | | 24 = 2 Ton | | | | 42 = 3-1/2 Ton |
| | | | | | 30 = 2-1/2 Ton | | | | 47 = 4 Ton |
| | | | | | 36 = 3 Ton | | | | 60 = 5 Ton |

UNIT DIMENSIONS



* NOTE: The base rail width is 2-1/8 inches. The bottom dimensions inside the base rails are shown in Bottom L x W column.

| Model No. | A | B | C | D | E | F | G | H | I | J | K | L | M | N** | P** | Q | R | S | Bottom L x W* Inside Base Rail |
|----------------|--------|--------|--------|-------|--------|----|--------|--------|----|---|---|-------|-------|--------|--------|--------|--------|--------|-----------------------------------|
| 2 to 3 Ton | 32-1/2 | 47-3/8 | 47-3/8 | 3-1/8 | 11-1/8 | 12 | 14-1/4 | 14-1/4 | 12 | 4 | * | 4-1/4 | 4-3/8 | 14-1/2 | 12-1/4 | 12-1/8 | 14-1/4 | 12-1/4 | 43-1/8 x 43-1/8 |
| 3-1/2 to 5 Ton | 36 | 47-3/8 | 73 | 4-5/8 | 15 | 12 | 18-3/4 | 18-3/4 | 12 | 4 | * | 4-1/4 | 5-1/4 | 12-1/4 | 19 | 15 | 19 | 12-1/4 | 68-3/4 x 43-1/8 |

** The supply opening in the drawing is shown for the orientation in the 3-1/2 to 5 Ton units. The opening for the 2 to 3 Ton units is rotated 90°, so the N and P dimensions are correct.