

Parts List, Charging Chart, Wiring Diagrams

PGE090 - 150 SERIES

PACKAGE GAS ELECTRIC UNITS



TABLE OF CONTENTS

PARTS LIST-----	2-13
PARTS DRAWING-----	14-21
CHARGING CHARTS--	22-24
WIRING DIAGRAMS---	25-27

PGE090 PARTS LIST

KEY NO.	DESCRIPTION	FAST PARTS NO.						
			PGE090HDA00AAA	PGE090HEA00AAA	PGE090HFA00AAA	PGE090LDA00AAA	PGE090LEA00AAA	PGE090LFA00AAA
1	COMP CR42K6-TF5-960	1171142	2	2	2	*	*	*
1	COMP CR42K6-TFD-960	1171141	*	*	*	2	2	2
3	COIL ASY COND (7.5) AL	1176296	1	1	1	1	1	1
4	COIL ASY EVAP (7.5) AL	1171546	1	1	1	1	1	1
5	MTR BLW 3/230/460 2.4 1750	1175478	1	1	1	1	1	1
6	MTR CND 1/230 1/4 1100	1171335	2	2	2	*	*	*
6	MTR CND 1/460 1/4 900	1171551	*	*	*	2	2	2
7	FAN C 22" 3B 1/2" 24 INT	1171220	2	2	2	2	2	2
8	CAP RN DUAL OV 370V 10+10	1175708	1	1	1	1	1	1
9	CAP RN OV 370V 4 MFD	1175500	1	1	1	1	1	1
10	CONTACTOR 2P 20A 24V	1171160	3	3	3	3	3	3
12	MODULE IGN UT 1068-11	1171166	1	1	1	*	*	*
12	MODULE IGN UT 1068-12	1171165	*	*	*	1	1	1
13	TRANS 208/230/460>24 75VA	1171496	1	1	1	1	1	1
14	WHEEL BLW 15X15 CW	1171050	1	1	1	1	1	1
15	WHEEL SI5.75x.938x5/16 CCW	1171049	1	1	1	1	1	1
16	FAN C 3.25" 12B 5/16" (INDUCER)	1171222	1	1	1	1	1	1
17	BOARD TERMINAL LO VOLT 8P	1171488	1	1	1	1	1	1
18	SWITCH LMT 195-80	1171325	1	1	1	1	1	1
19	REGULATOR EXHAUST	1175855	1	*	*	1	*	*
19	REGULATOR EXHAUST	1171432	*	1	*	*	1	*
19	REGULATOR EXHAUST	1176302	*	*	1	*	*	1
20	SWITCH TMP	1171324	1	1	1	1	1	1
21	SENSOR FLAME	1171449	1	1	1	1	1	1
22	IGNITOR	1171306	1	1	1	1	1	1
23	MANAFOLD ASY (HIGH HEAT)	1171328	*	*	1	*	*	1
23	MANAFOLD ASY (LOW HEAT)	1176297	1	*	*	1	*	*
23	MANAFOLD ASY (MED HEAT)	1176303	*	1	*	*	1	*
24	BURNER ASY	1171095	2	2	2	2	2	2
25	BURNER ASY	1171087	1	2	3	1	2	3
26	RING INSERT	1171439	3	4	5	3	4	5
27	VALVE N HSI 1STG WR 36G22210P1	1176201	1	*	*	1	*	*
27	VALVE N HSI 2STG WR 36H54470	1175187	*	1	*	*	1	*
27	VALVE N HSI 2STG WR 36H54471	1176305	*	*	1	*	*	1
28	ORIFICE MAIN 30	1171461	*	*	5	*	*	5
28	ORIFICE MAIN 31	1171462	3	4	*	3	4	*
29	INDUCER MOTOR ASY 230V	1171314	1	1	1	*	*	*
29	INDUCER MOTOR ASY 460V	1171315	*	*	*	1	1	1
30	SENSOR (HALL EFFECT)	1171450	1	1	1	1	1	1
31	MTR VNT 1/230 1/16HP	1171348	1	1	1	*	*	*
31	MTR VNT 1/460 1/16HP	1171347	*	*	*	1	1	1
33	HEAT EX (HIGH HEAT)	1171287	*	*	1	*	*	1
33	HEAT EX (LOW HEAT)	1176298	1	*	*	1	*	*
33	HEAT EX (MED HEAT)	1176301	*	1	*	*	1	*
36	KIT BRNR WIRING	1171894	1	1	1	1	1	1
37	PLUG WIRING ASY (PL6)	1173199	1	1	1	1	1	1
38	DRIER FILTER	1171555	2	2	2	2	2	2
39	FREEZE STAT O30 C45	1171252	1	1	1	1	1	1
41	RELAY 24V DPST 9100-211Q28	1171809	1	1	1	1	1	1

PGE090 PARTS LIST (continued)

KEY NO.	DESCRIPTION	FAST PARTS NO.	PGE090HDA00AAA	PGE090HEA00AAA	PGE090HFA00AAA	PGE090LDA00AAA	PGE090LEA00AAA	PGE090LFA00AAA
42	BEARING	1175709	2	2	2	2	2	2
43	KEY	1171322	1	1	1	1	1	1
44	PULLEY (BLW)	1175315	1	1	1	*	*	*
44	PULLEY (BLW)	1175315	*	*	*	1	1	1
45	PULLEY (MTR)	1175832	1	1	1	*	*	*
45	PULLEY (MTR)	1175832	*	*	*	1	1	1
46	BELT	1176299	1	1	1	*	*	*
46	BELT	1176299	*	*	*	1	1	1
47	SHAFT	1175730	1	1	1	1	1	1
48	SWITCH PRESSURE (LOW)	1175308	2	2	2	2	2	2
49	CIRCUIT BREAKER	1171114	1	1	1	1	1	1
50	SWITCH PRESSURE (HIGH)	1171805	2	2	2	2	2	2
A	FILTER 16X25X2	1175312	4	4	4	4	4	4
AA	PANEL FILTER DOOR (UPPER)	1171386	1	1	1	1	1	1
AB	PANEL ASY (INDOOR END)	1171375	1	1	1	1	1	1
AC	PANEL ASY (INDOOR FAN ACCESS)	1171004	1	1	1	1	1	1
AD	PANEL OUTDOOR (POWER)	1171003	1	1	1	1	1	1
AE	PLATE (FAN MTR SIDE)	1171395	1	1	1	1	1	1
AF	PLATE (FAN SIDE)	1171396	1	1	1	1	1	1
AG	PLATE WIRING	1171373	1	1	1	1	1	1
AH	POST CENTER (FILTER SIDE)	1171406	1	1	1	1	1	1
AJ	POST CENTER (FAN ACCESS)	1171409	1	1	1	1	1	1
AK	POST CORNER (COIL)	1171177	1	1	1	1	1	1
AL	POST CORNER (CONTL BOX SIDE)	1171173	1	1	1	1	1	1
AM	POST CORNER (INDOOR END)	1171175	2	2	2	2	2	2
AN	RACEWAY (OFM)	1171428	1	1	1	1	1	1
AP	RAIL BASE (FILTER ACCESS)	1171033	1	1	1	1	1	1
AQ	RAIL BASE (FAN ACCESS)	1171031	1	1	1	1	1	1
AR	RAIL BASE (ICP)	1175313	1	1	1	1	1	1
AS	RETAINER (FLAME)	1176300	1	*	*	1	*	*
AS	RETAINER (FLAME)	1176304	*	1	*	*	1	*
AS	RETAINER (FLAME)	1171246	*	*	1	*	*	1
AV	PLATE ASY IFM MTR	1175664	1	1	1	1	1	1
AW	SCROLL (FAN)	1175260	1	1	1	1	1	1
AX	SUPPORT ASY (INDUCED DRAFT)	1171473	1	1	1	1	1	1
AY	SUPPORT (BURNER)	1171094	1	1	1	1	1	1
AZ	SUPPORT (HEAT)	1171469	1	1	1	1	1	1
B	BOOT CAPACITOR	1171842	1	1	1	1	1	1
BA	BOLT COMP MTG	1171056	8	8	8	8	8	8
BB	DRAIN LINE SEAL (ROUND)	1171447	1	1	1	1	1	1
BC	BRACKET MTR SUPPORT	1175711	1	1	1	1	1	1
BD	BRACKET ASY BRG	1175712	2	2	2	2	2	2
BE	BLOWER ASY	1172637	1	1	1	1	1	1
C	BRACKET BASE (CORNER)	1171071	2	2	2	2	2	2
D	BRACKET COIL (HEADER END)	1171070	1	1	1	1	1	1
E	CHANNEL (DUCT)	1171112	1	1	1	1	1	1
F	CLAMP CAPACITOR OVL	1171552	2	2	2	2	2	2
G	COVER ASY (TOP)	1171365	1	1	1	1	1	1
H	COVER (CONTROL BOX)	1171169	1	1	1	1	1	1

PGE090 PARTS LIST (continued)

KEY NO.	DESCRIPTION	FAST PARTS NO.	PGE090HDA00AAA	PGE090HEA00AAA	PGE090HFA00AAA	PGE090LDA00AAA	PGE090LEA00AAA	PGE090LFA00AAA
J	COVER ASY (RETURN AIR)	1171182	1	1	1	1	1	1
K	COVER ASY (SUPPLY AIR)	1171181	1	1	1	1	1	1
L	GASKET (REGULATOR)	1171265	1	1	1	1	1	1
M	GRILLE (OUTLET)	1171267	1	1	1	1	1	1
N	GROMMET COMP 1.25"DIA	1171269	8	8	8	8	8	8
P	GUARD (BASERAIL)	1171206	1	1	1	1	1	1
Q	GUARD (LIMIT SWITCH)	1171271	1	1	1	1	1	1
S	KIT (HOOD EXHAUST)	1173617	1	1	1	1	1	1
T	HOUSING (FAN)	1171301	1	1	1	1	1	1
V	INSULATION	1171317	1	1	1	1	1	1
W	PAN CONDENSATE	1171359	1	1	1	1	1	1
X	PANEL ACCESS (BURNER CNTRLS)	1171139	1	1	1	1	1	1
Z	PANEL FILTER (LOWER)	1171382	1	1	1	1	1	1
PARTS NOT SHOWN								
)	(HARNESS ASY (COMMON)	1171525	1	1	1	1	1	1
)	(HARNESS ASY (COMP)	1175150	1	1	1	1	1	1
)	(HARNESS ASY (IFM)	1175707	1	1	1	1	1	1
)	(HARNESS ASY (IGN CONTROL)	1175166	1	1	1	1	1	1
)	(PLUG ASY (ECON)	1171405	1	1	1	1	1	1
)	(PLUG ASY (YAC)	1171523	1	1	1	1	1	1

PGE102 PARTS LIST

KEY NO.	DESCRIPTION	FAST PARTS NO.	PGE102HDA00AAA	PGE102HEA00AAA	PGE102HFA00AAA	PGE102LDA00AAA	PGE102LEA00AAA	PGE102LFA00AAA
1	COMP SRH552HE	1175404	*	*	*	1	1	1
1	COMP SRY552HE	1175410	1	1	1	*	*	*
2	COMP SRH482HC	1175714	*	*	*	1	1	1
2	COMP SRY482HC	1175792	1	1	1	*	*	*
3	COIL ASY COND (9) AL	1175398	1	1	1	1	1	1
4	COIL ASY EVAP (9) AL	1175393	1	1	1	1	1	1
5	MTR BLW 3/230/460 2.4 1750	1175478	1	1	1	1	1	1
6	MTR CND 1/230 1/4 1100	1171335	2	2	2	*	*	*
6	MTR CND 1/460 1/4 1100	1171334	*	*	*	2	2	2
7	FAN C 22" 3B 1/2" 24 INT	1171220	2	2	2	2	2	2
8	CAP RN DUAL OV 370V 10+10	1175708	1	1	1	1	1	1
9	CAP RN OV 370V 4 MFD	1175500	1	1	1	1	1	1
10	CONTACTOR 2P 20A 24V	1171160	3	3	3	3	3	3
12	MODULE IGN UT 1068-11	1171166	1	1	1	*	*	*
12	MODULE IGN UT 1068-12	1171165	*	*	*	1	1	1
13	TRANS 208/230/460>24 75VA	1171496	1	1	1	1	1	1
14	WHEEL BLW 15X15 CW	1171050	1	1	1	1	1	1
15	WHEEL SI5.75x.938x5/16 CCW	1171049	1	1	1	1	1	1
16	FAN C 3.25" 12B 5/16" (INDUCER)	1171222	1	1	1	1	1	1
17	BOARD TERMINAL LO VOLT 8P	1171488	1	1	1	1	1	1
18	SWITCH LMT 195-80	1171325	1	1	1	1	1	1
19	REGULATOR EXHAUST	1175855	1	*	*	1	*	*
19	REGULATOR EXHAUST	1171432	*	1	*	*	1	*
19	REGULATOR EXHAUST	1176302	*	*	1	*	*	1
20	SWITCH TMP	1171324	1	1	1	1	1	1
21	SENSOR FLAME	1171449	1	1	1	1	1	1
22	IGNITOR	1171306	1	1	1	1	1	1
23	MANAFOLD ASY (HIGH HEAT)	1171328	*	*	1	*	*	1
23	MANAFOLD ASY (LOW HEAT)	1176297	1	*	*	1	*	*
23	MANAFOLD ASY (MED HEAT)	1176303	*	1	*	*	1	*
24	BURNER ASY	1171095	2	2	2	2	2	2
25	BURNER ASY	1171087	1	2	3	1	2	3
26	RING INSERT	1171439	3	4	5	3	4	5
27	VALVE N HSI 1STG WR 36G22210P1	1176201	1	*	*	1	*	*
27	VALVE N HSI 2STG WR 36H54470	1175187	*	*	1	*	*	1
27	VALVE N HSI 2STG WR 36H54471	1176305	*	1	*	*	1	*
28	ORIFICE MAIN 31	1171462	3	4	5	3	4	5
29	INDUCER MOTOR ASY 230V	1171314	1	1	1	*	*	*
29	INDUCER MOTOR ASY 460V	1171315	*	*	*	1	1	1
30	SENSOR (HALL EFFECT)	1171450	1	1	1	1	1	1
31	MTR VNT 1/230 1/16HP	1171348	1	1	1	*	*	*
31	MTR VNT 1/460 1/16HP	1171347	*	*	*	1	1	1
33	HEAT EX (HIGH HEAT)	1171287	*	*	1	*	*	1
33	HEAT EX (LOW HEAT)	1176298	1	*	*	1	*	*
33	HEAT EX (MED HEAT)	1176301	*	1	*	*	1	*
36	KIT BRNR WIRING	1171894	1	1	1	1	1	1
37	PLUG WIRING ASY (PL6)	1173199	1	1	1	1	1	1
38	DRIER FILTER	1171555	2	2	2	2	2	2
39	FREEZE STAT O30 C45	1171252	1	1	1	1	1	1

PGE102 PARTS LIST (continued)

KEY NO.	DESCRIPTION	FAST PARTS NO.	PGE102HDA00AAA	PGE102HEA00AAA	PGE102HFA00AAA	PGE102LDA00AAA	PGE102LEA00AAA	PGE102LFA00AAA
41	RELAY 24V DPST 9100-211Q28	1171809	1	1	1	1	1	1
42	BEARING	1175709	2	2	2	2	2	2
43	KEY	1171322	1	1	1	1	1	1
44	PULLEY (BLW)	1175315	1	1	1	1	1	1
45	PULLEY (MTR)	1175832	1	1	1	1	1	1
46	BELT	1176299	1	1	1	1	1	1
47	SHAFT	1175730	1	1	1	1	1	1
48	SWITCH PRESSURE (LOW)	1175308	2	2	2	2	2	2
49	CIRCUIT BREAKER	1171114	1	1	1	1	1	1
50	SWITCH PRESSURE (HIGH)	1171805	2	2	2	2	2	2
A	FILTER 16X25X2	1175312	4	4	4	4	4	4
AA	PANEL FILTER DOOR (UPPER)	1171386	1	1	1	1	1	1
AB	PANEL ASY (INDOOR END)	1171375	1	1	1	1	1	1
AC	PANEL ASY (INDOOR FAN ACCESS)	1171004	1	1	1	1	1	1
AD	PANEL OUTDOOR (POWER)	1171003	1	1	1	1	1	1
AE	PLATE (FAN MTR SIDE)	1171395	1	1	1	1	1	1
AF	PLATE (FAN SIDE)	1171396	1	1	1	1	1	1
AG	PLATE WIRING	1171373	1	1	1	1	1	1
AH	POST CENTER (FILTER SIDE)	1171406	1	1	1	1	1	1
AJ	POST CENTER (FAN ACCESS)	1171409	1	1	1	1	1	1
AK	POST CORNER (COIL)	1171177	1	1	1	1	1	1
AL	POST CORNER (CONTRL BOX SIDE)	1171173	1	1	1	1	1	1
AM	POST CORNER (INDOOR END)	1171175	2	2	2	2	2	2
AN	RACEWAY (OFM)	1171428	1	1	1	1	1	1
AP	RAIL BASE (FILTER ACCESS)	1171033	1	1	1	1	1	1
AQ	RAIL BASE (FAN ACCESS)	1171031	1	1	1	1	1	1
AR	RAIL BASE (ICP)	1175313	1	1	1	1	1	1
AS	RETAINER (FLAME)	1176300	1	*	*	1	*	*
AS	RETAINER (FLAME)	1176304	*	1	*	*	1	*
AS	RETAINER (FLAME)	1171246	*	*	1	*	*	1
AV	PLATE ASY IFM MTR	1175664	1	1	1	1	1	1
AW	SCROLL (FAN)	1175260	1	1	1	1	1	1
AX	SUPPORT ASY (INDUCED DRAFT)	1171473	1	1	1	1	1	1
AY	SUPPORT (BURNER)	1171094	1	1	1	1	1	1
AZ	SUPPORT (HEAT)	1171469	1	1	1	1	1	1
B	BOOT CAPACITOR	1171842	1	1	1	1	1	1
BA	BOLT COMP MTG	1171056	8	8	8	8	8	8
BB	DRAIN LINE SEAL (ROUND)	1171447	1	1	1	1	1	1
BC	BRACKET MTR SUPPORT	1175711	1	1	1	1	1	1
BD	BRACKET ASY BRG	1175712	2	2	2	2	2	2
BE	BLOWER ASY	1172637	1	1	1	1	1	1
C	BRACKET BASE (CORNER)	1171071	2	2	2	2	2	2
D	BRACKET COIL (HEADER END)	1171070	1	1	1	1	1	1
E	CHANNEL (DUCT)	1171112	1	1	1	1	1	1
F	CLAMP CAPACITOR OVL	1171552	2	2	2	2	2	2
G	COVER ASY (TOP)	1171365	1	1	1	1	1	1
H	COVER (CONTROL BOX)	1171169	1	1	1	1	1	1
J	COVER ASY (RETURN AIR)	1171182	1	1	1	1	1	1
K	COVER ASY (SUPPLY AIR)	1171181	1	1	1	1	1	1

PGE102 PARTS LIST (continued)

KEY NO.	DESCRIPTION	FAST PARTS NO.	PGE102HDA00AAA	PGE102HEA00AAA	PGE102HFA00AAA	PGE102LDA00AAA	PGE102LEA00AAA	PGE102LFA00AAA
L	GASKET (REGULATOR)	1171265	1	1	1	1	1	1
M	GRILLE (OUTLET)	1171267	1	1	1	1	1	1
N	GROMMET COMP 1.25"DIA	1171269	8	8	8	8	8	8
P	GUARD (BASERAIL)	1171206	1	1	1	1	1	1
Q	GUARD (LIMIT SWITCH)	1171271	1	1	1	1	1	1
S	KIT (HOOD EXHAUST)	1173617	1	1	1	1	1	1
T	HOUSING (FAN)	1171301	1	1	1	1	1	1
V	INSULATION	1171317	1	1	1	1	1	1
W	PAN CONDENSATE	1171359	1	1	1	1	1	1
X	PANEL ACCESS (BURNER CNTRLS)	1171139	1	1	1	1	1	1
Z	PANEL FILTER (LOWER)	1171382	1	1	1	1	1	1
PARTS NOT SHOWN								
)	HARNESS ASY (COMMON)	1171525	1	1	1	1	1	1
)	HARNESS ASY (COMP)	1175391	1	1	1	1	1	1
)	HARNESS ASY (IFM)	1175707	1	1	1	1	1	1
)	HARNESS ASY (IGN CONTROL)	1175166	1	1	1	1	1	1
)	PLUG ASY (ECON)	1171405	1	1	1	1	1	1
)	PLUG ASY (YAC)	1171523	1	1	1	1	1	1

PGE120 PARTS LIST

KEY NO.	DESCRIPTION	FAST PARTS NO.	PGE120HDA00AAA	PGE120HEA00AAA	PGE120HFA00AAA	PGE120LDA00AAA	PGE120LEA00AAA	PGE120LFA00AAA
1	COMP SRY552HE	1175410	2	2	2	*	*	*
1	COMP SRY552HE	1175404	*	*	*	2	2	2
3	COIL ASY COND (10) AL	1171541	1	1	1	1	1	1
4	COIL ASY EVAP (10) AL	1171564	1	1	1	1	1	1
5	MTR BLW 3/230/460 2.4 1750	1175478	1	1	1	1	1	1
6	MTR CND 1/230 1/4 1100	1171335	2	2	2	*	*	*
6	MTR CND 1/460 1/4 900	1171551	*	*	*	2	2	2
7	FAN C 22" 3B 1/2" 24 INT	1171220	2	2	2	2	2	2
8	CAP RN DUAL OV 370V 10+10	1175708	1	1	1	1	1	1
9	CAP RN OV 370V 4 MFD	1175500	1	1	1	1	1	1
10	CONTACTOR 2P 20A 24V	1171160	3	3	3	3	3	3
12	MODULE IGN UT 1068-11	1171166	1	1	1	*	*	*
12	MODULE IGN UT 1068-12	1171165	*	*	*	1	1	1
13	TRANS 208/230/460>24 75VA	1171496	1	1	1	1	1	1
14	WHEEL BLW 15X15 CW	1171050	1	1	1	1	1	1
15	WHEEL SI5.75x.938x5/16 CCW	1171049	1	1	1	1	1	1
16	FAN C 3.25" 12B 5/16" (INDUCER)	1171222	1	1	1	1	1	1
17	BOARD TERMINAL LO VOLT 8P	1171488	1	1	1	1	1	1
18	SWITCH LMT 195-80	1171325	1	1	1	1	1	1
19	REGULATOR EXHAUST	1176302	1	*	*	1	*	*
19	REGULATOR EXHAUST	1171432	*	1	1	*	1	1
20	SWITCH TMP	1171324	1	1	1	1	1	1
21	SENSOR FLAME	1171449	1	1	1	1	1	1
22	IGNITOR	1171306	1	1	1	1	1	1
23	MANAFOLD ASY	1176303	1	*	*	1	*	*
23	MANAFOLD ASY	1171328	*	1	1	*	1	1
24	BURNER ASY	1171095	2	2	2	2	2	2
25	BURNER ASY	1171087	2	3	3	2	3	3
26	RING INSERT	1171439	4	5	5	4	5	5
27	VALVE N HSI 2STG WR 36H54470	1175187	*	1	1	*	1	1
27	VALVE N HSI 2STG WR 36H54471	1176305	1	*	*	1	*	*
28	ORIFICE MAIN 30	1171461	*	*	5	*	*	5
28	ORIFICE MAIN 31	1171462	4	5	*	4	5	*
29	INDUCER MOTOR ASY 230V	1171314	1	1	1	*	*	*
29	INDUCER MOTOR ASY 460V	1171315	*	*	*	1	1	1
30	SENSOR (HALL EFFECT)	1171450	1	1	1	1	1	1
31	MTR VNT 1/230 1/16HP	1171348	1	1	1	*	*	*
31	MTR VNT 1/460 1/16HP	1171347	*	*	*	1	1	1
33	HEAT EX (HIGH HEAT)	1171288	*	*	1	*	*	1
33	HEAT EX (LOW HEAT)	1176301	1	*	*	1	*	*
33	HEAT EX (MED HEAT)	1171287	*	1	*	*	1	*
36	KIT BRNR WIRING	1171894	1	1	1	1	1	1
37	PLUG WIRING ASY (PL6)	1173199	1	1	1	1	1	1
38	DRIER FILTER	1171555	2	2	2	2	2	2
39	FREEZE STAT O30 C45	1171252	1	1	1	1	1	1
41	RELAY 24V DPST 9100-211Q28	1171809	1	1	1	1	1	1
42	BEARING	1175709	2	2	2	2	2	2
43	KEY	1171322	1	1	1	1	1	1
44	PULLEY (BLW)	1175315	1	1	1	1	1	1

PGE120 PARTS LIST (continued)

KEY NO.	DESCRIPTION	FAST PARTS NO.	PGE120HDA00AAA	PGE120HEA00AAA	PGE120HFA00AAA	PGE120LDA00AAA	PGE120LEA00AAA	PGE120LFA00AAA
45	PULLEY (MTR)	1175832	1	1	1	1	1	1
46	BELT	1065684	1	1	1	1	1	1
47	SHAFT	1175730	1	1	1	1	1	1
48	SWITCH PRESSURE (LOW)	1175308	2	2	2	2	2	2
49	CIRCUIT BREAKER	1171114	1	1	1	1	1	1
50	SWITCH PRESSURE (HIGH)	1171805	2	2	2	2	2	2
A	FILTER 20X20X2	1176306	4	4	4	4	4	4
AA	PANEL FILTER DOOR (UPPER)	1171385	1	1	1	1	1	1
AB	PANEL ASY (INDOOR END)	1171308	1	1	1	1	1	1
AC	PANEL ASY (INDOOR FAN ACCESS)	1171364	1	1	1	1	1	1
AD	PANEL OUTDOOR (POWER)	1171368	1	1	1	1	1	1
AE	PLATE (FAN MTR SIDE)	1171227	1	1	1	1	1	1
AF	PLATE (FAN SIDE)	1171218	1	1	1	1	1	1
AG	PLATE WIRING	1171373	1	1	1	1	1	1
AH	POST CENTER (FILTER SIDE)	1171109	1	1	1	1	1	1
AJ	POST CENTER (FAN ACCESS)	1171410	1	1	1	1	1	1
AK	POST CORNER (COIL)	1171174	1	1	1	1	1	1
AL	POST CORNER (CONTL BOX SIDE)	1171172	1	1	1	1	1	1
AM	POST CORNER (INDOOR END)	1171309	2	2	2	2	2	2
AN	RACEWAY (OFM)	1171428	1	1	1	1	1	1
AP	RAIL BASE (FILTER ACCESS)	1171033	1	1	1	1	1	1
AQ	RAIL BASE (FAN ACCESS)	1171031	1	1	1	1	1	1
AR	RAIL BASE	1171032	1	1	1	1	1	1
AS	RETAINER (FLAME)	1176304	1	*	*	1	*	*
AS	RETAINER (FLAME)	1171247	*	1	1	*	1	1
AV	PLATE MTR MTG	1175891	1	1	1	1	1	1
AW	SCROLL (FAN)	1171223	1	1	1	1	1	1
AX	SUPPORT ASY (INDUCED DRAFT)	1171473	1	1	1	1	1	1
AY	SUPPORT (BURNER)	1171094	1	1	1	1	1	1
AZ	SUPPORT (HEAT)	1171469	1	1	1	1	1	1
B	BOOT CAPACITOR	1171842	1	1	1	1	1	1
BA	BOLT COMP MTG	1171056	8	8	8	8	8	8
BB	DRAIN LINE SEAL (ROUND)	1171447	1	1	1	1	1	1
BC	BRACKET MTR ADJ	1175913	1	1	1	1	1	1
BD	BRACKET ASY BRG	1175712	2	2	2	2	2	2
BE	BLOWER ASY	1175411	1	1	1	1	1	1
BF	BRACKET	1175713	1	1	1	1	1	1
BG	BRACKET MTR MTG	1175911	2	2	2	2	2	2
BH	BRACKET MTR	1175912	2	2	2	2	2	2
BJ	BOLT MTR ADJ 5/16-18 X 12"	1175914	2	2	2	2	2	2
C	BRACKET BASE (CORNER)	1171071	2	2	2	2	2	2
D	BRACKET COIL (HEADER END)	1171070	1	1	1	1	1	1
E	CHANNEL (DUCT)	1171112	1	1	1	1	1	1
F	CLAMP CAPACITOR OVL	1171552	2	2	2	2	2	2
G	COVER ASY (TOP)	1171365	1	1	1	1	1	1
H	COVER (CONTROL BOX)	1171169	1	1	1	1	1	1
J	COVER ASY (RETURN AIR)	1171182	1	1	1	1	1	1
K	COVER ASY (SUPPLY AIR)	1171180	1	1	1	1	1	1
L	GASKET (REGULATOR)	1171265	1	1	1	1	1	1

PGE120 PARTS LIST (continued)

KEY NO.	DESCRIPTION	FAST PARTS NO.	PGE120HDA00AAA	PGE120HEA00AAA	PGE120HFA00AAA	PGE120LDA00AAA	PGE120LEA00AAA	PGE120LFA00AAA
M	GRILLE (OUTLET)	1171267	1	1	1	1	1	1
N	GROMMET COMP 1.25"DIA	1171269	8	8	8	8	8	8
P	GUARD (BASERAIL)	1171206	1	1	1	1	1	1
Q	GUARD (LIMIT SWITCH)	1171271	1	1	1	1	1	1
S	KIT (HOOD EXHAUST)	1173617	1	1	1	1	1	1
T	HOUSING (FAN)	1171301	1	1	1	1	1	1
V	INSULATION	1171317	1	1	1	1	1	1
W	PAN CONDENSATE	1171359	1	1	1	1	1	1
X	PANEL ACCESS (BURNER CNTRLS)	1171383	1	1	1	1	1	1
Z	PANEL FILTER (LOWER)	1171382	1	1	1	1	1	1
PARTS NOT SHOWN								
)	HARNESS ASY (COMMON)	1171525	1	1	1	1	1	1
)	HARNESS ASY (COMP)	1171520	1	1	1	1	1	1
)	HARNESS ASY (IFM)	1175707	1	1	1	1	1	1
)	HARNESS ASY (IGN CONTROL)	1175166	1	1	1	1	1	1
)	PLUG ASY (ECON)	1171405	1	1	1	1	1	1
)	PLUG ASY (YAC)	1171523	1	1	1	1	1	1

PGE150 PARTS LIST						
KEY NO.	DESCRIPTION	FAST PARTS NO.	PGE150HDA00AAA	PGE150HFA00AAA	PGE150LDA00AAA	PGE150LFA00AAA
1	COMP ZR68KC-TF5-250	1171559	2	2	*	*
1	COMP ZR68KC-TFD-250	1171560	*	*	2	2
3	COIL ASY COND (12.5) AL	1171129	1	1	1	1
4	COIL ASY EVAP (12.5) AL	1171123	1	1	1	1
5	MTR BLW 3/230/460 2.4 1750	1175893	1	1	1	1
6	MTR CND 1/230 1/4 1100	1171335	2	2	*	*
6	MTR CND 1/230 1/4 1100	1171334	*	*	2	2
7	FAN C 22" 3B 1/2" 24 INT	1171220	2	2	2	2
8	CAP RN DUAL OV 370V 10+10	1175708	1	1	1	1
9	CAP RN OV 370V 4 MFD	1175500	1	1	1	1
10	CONTACTOR 2P 30A 24V	1171554	2	2	*	*
10	CONTACTOR 2P 30A 24V	1171160	*	*	3	3
11	CONTACTOR 2P 20A 24V	1171160	1	1	*	*
12	MODULE IGN UT 1068-11	1171166	1	1	*	*
12	MODULE IGN UT 1068-12	1171165	*	*	1	1
13	TRANS 208/230/460>24 75VA	1171496	1	1	1	1
14	WHEEL BLW 15X15 CW	1171050	1	1	1	1
15	WHEEL SI5.75x.938x5/16 CCW	1171049	1	1	1	1
16	FAN C 3.25" 12B 5/16" (INDUCER)	1171222	1	1	1	1
17	BOARD TERMINAL LO VOLT 8P	1171488	1	1	1	1
18	SWITCH LMT 195-80	1171325	1	1	1	1
19	REGULATOR EXHAUST	1171432	1	1	1	1
20	SWITCH TMP	1171324	1	1	1	1
21	SENSOR FLAME	1171449	1	1	1	1
22	IGNITOR	1171306	1	1	1	1
23	MANAFOLD ASY	1171328	1	1	1	1
24	BURNER ASY	1171095	2	2	2	2
25	BURNER ASY	1171087	3	3	3	3
26	RING INSERT	1171439	5	5	5	5
27	VALVE N HSI 2STG WR 36H54470	1175187	1	1	1	1
28	ORIFICE MAIN 30	1171461	*	5	*	5
28	ORIFICE MAIN 31	1171462	5	*	5	*
29	INDUCER MOTOR ASY 230V	1171314	1	1	*	*
29	INDUCER MOTOR ASY 460V	1171315	*	*	1	1
30	SENSOR (HALL EFFECT)	1171450	1	1	1	1
31	MTR VNT 1/230 1/16HP	1171348	1	1	*	*
31	MTR VNT 1/460 1/16HP	1171347	*	*	1	1
33	HEAT EX (HIGH HEAT)	1171288	*	1	*	1
33	HEAT EX (MED HEAT)	1171287	1	*	1	*
36	KIT BRNR WIRING	1171894	1	1	1	1
37	PLUG WIRING ASY (PL6)	1173199	1	1	1	1
38	DRIER FILTER	1171555	2	2	2	2
39	FREEZE STAT O30 C45	1171252	1	1	1	1
41	RELAY 24V DPST 9100-211Q28	1171809	1	1	1	1
42	BEARING	1175709	2	2	2	2
43	KEY	1171322	1	1	1	1
44	PULLEY (BLW)	1175896	1	1	1	1
45	PULLEY (MTR)	1171562	1	1	1	1
46	BELT	1171515	1	1	1	1

PGE150 PARTS LIST (continued)

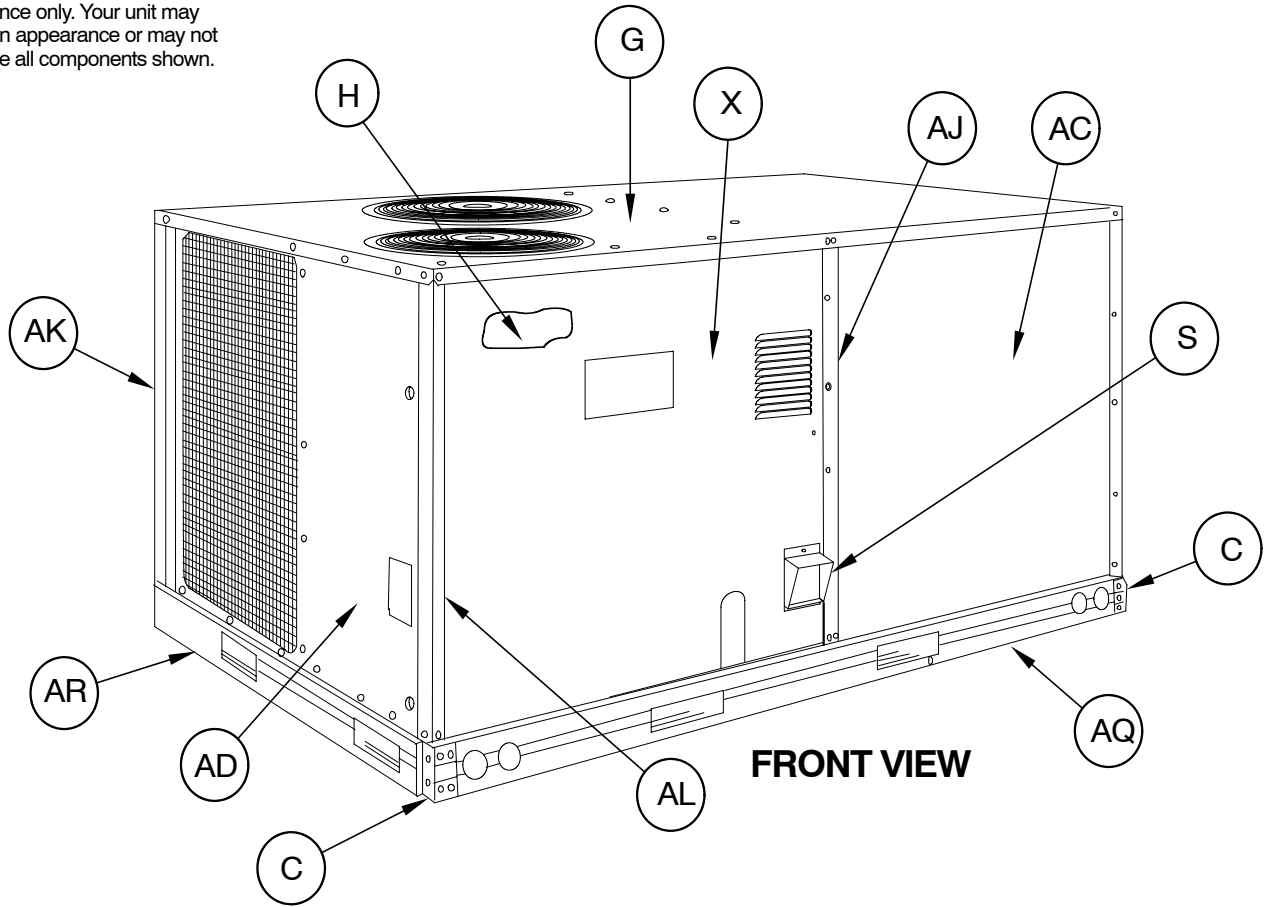
KEY NO.	DESCRIPTION	FAST PARTS NO.				
			PGE150HDA00AAA	PGE150HFA00AAA	PGE150LDA00AAA	PGE150LFA00AAA
47	SHAFT	1175730	1	1	1	1
48	SWITCH PRESSURE (LOW)	1175308	2	2	2	2
49	CIRCUIT BREAKER	1171114	1	1	1	1
50	SWITCH PRESSURE (HIGH)	1171805	2	2	2	2
A	FILTER 20X20X2	1176306	4	4	4	4
AA	PANEL FILTER DOOR (UPPER)	1171385	1	1	1	1
AB	PANEL ASY (INDOOR END)	1171308	1	1	1	1
AC	PANEL ASY (INDOOR FAN ACCESS)	1171364	1	1	1	1
AD	PANEL OUTDOOR (POWER)	1171368	1	1	1	1
AE	PLATE (FAN MTR SIDE)	1171227	1	1	1	1
AF	PLATE (FAN SIDE)	1171218	1	1	1	1
AG	PLATE WIRING	1171373	1	1	1	1
AH	POST CENTER (FILTER SIDE)	1171109	1	1	1	1
AJ	POST CENTER (FAN ACCESS)	1171410	1	1	1	1
AK	POST CORNER (COIL)	1171174	1	1	1	1
AL	POST CORNER (CONTL BOX SIDE)	1171172	1	1	1	1
AM	POST CORNER (INDOOR END)	1171309	2	2	2	2
AN	RACEWAY (OFM)	1171428	1	1	1	1
AP	RAIL BASE (FILTER ACCESS)	1171033	1	1	1	1
AQ	RAIL BASE (FAN ACCESS)	1171031	1	1	1	1
AR	RAIL BASE	1171032	1	1	1	1
AS	RETAINER (FLAME)	1171247	1	1	1	1
AV	PLATE MTR MTG	1175891	1	1	1	1
AW	SCROLL (FAN)	1171223	1	1	1	1
AX	SUPPORT ASY (INDUCED DRAFT)	1171473	1	1	1	1
AY	SUPPORT (BURNER)	1171094	1	1	1	1
AZ	SUPPORT (HEAT)	1171469	1	1	1	1
B	BOOT CAPACITOR	1171842	1	1	1	1
BA	BOLT COMP MTG	1171056	8	8	8	8
BB	DRAIN LINE SEAL (ROUND)	1171447	1	1	1	1
BC	BRACKET MTR ADJ	1175913	1	1	1	1
BD	BRACKET ASY BRG	1175712	2	2	2	2
BE	BLOWER ASY	1175411	1	1	1	1
BF	BRACKET	1175713	1	1	1	1
BG	BRACKET MTR MTG	1175911	2	2	2	2
BH	BRACKET MTR	1175912	2	2	2	2
BJ	BOLT MTR ADJ 5/16-18 X 12"	1175914	2	2	2	2
C	BRACKET BASE (CORNER)	1171071	2	2	2	2
D	BRACKET COIL (HEADER END)	1171070	1	1	1	1
E	CHANNEL (DUCT)	1171112	1	1	1	1
F	CLAMP CAPACITOR OVL	1171552	2	2	2	2
G	COVER ASY (TOP)	1171365	1	1	1	1
H	COVER (CONTROL BOX)	1171169	1	1	1	1
J	COVER ASY (RETURN AIR)	1171182	1	1	1	1
K	COVER ASY (SUPPLY AIR)	1171180	1	1	1	1
L	GASKET (REGULATOR)	1171265	1	1	1	1
M	GRILLE (OUTLET)	1171267	1	1	1	1
N	GROMMET COMP 1.62"DIA	1171270	8	8	8	8
P	GUARD (BASERAIL)	1171206	1	1	1	1

PGE150 PARTS LIST (continued)

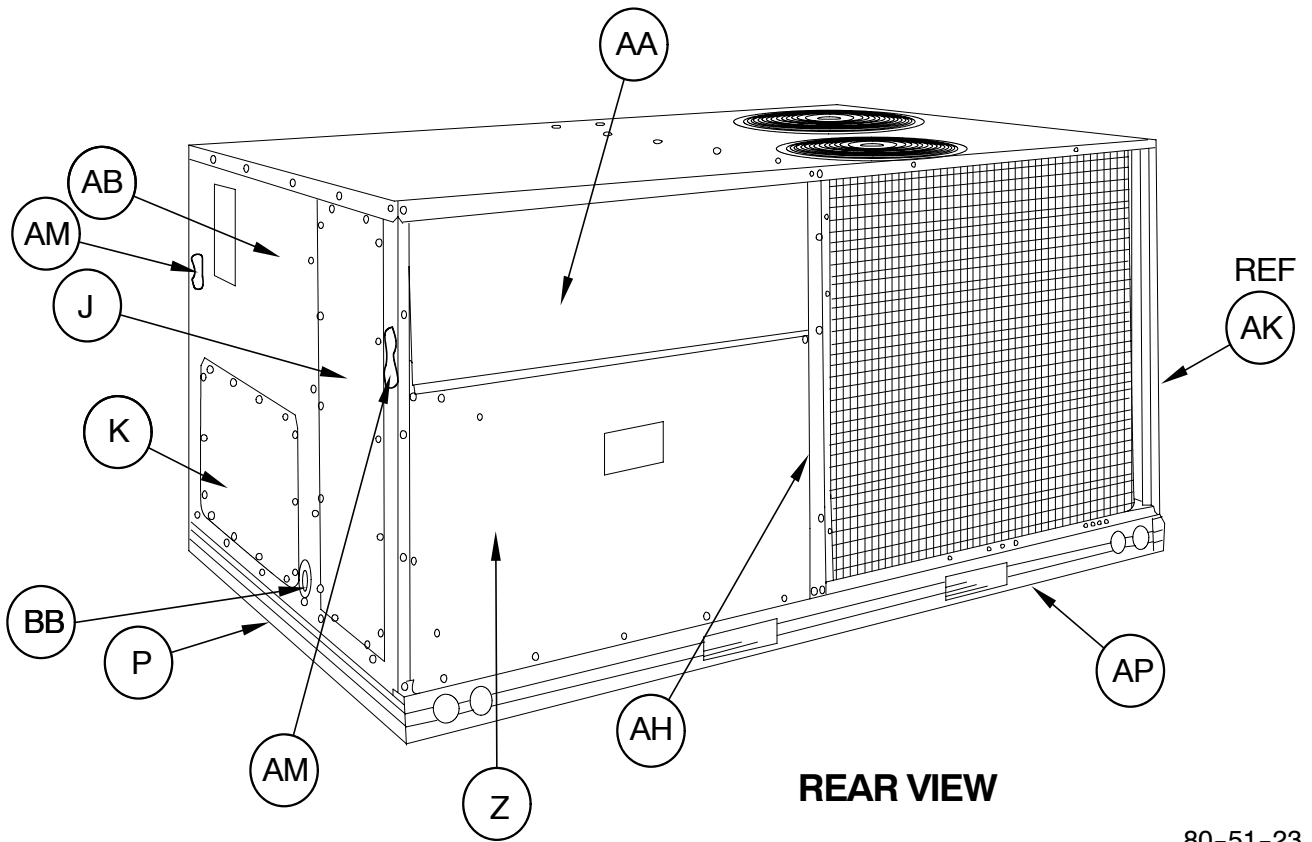
KEY NO.	DESCRIPTION	FAST PARTS NO.	PGE150HDA00AAA	PGE150HFA00AAA	PGE150LDA00AAA	PGE150LFA00AAA
Q	GUARD (LIMIT SWITCH)	1171271	1	1	1	1
S	KIT (HOOD EXHAUST)	1173617	1	1	1	1
T	HOUSING (FAN)	1171301	1	1	1	1
V	INSULATION	1171317	1	1	1	1
W	PAN CONDENSATE	1171359	1	1	1	1
X	PANEL ACCESS (BURNER CNTRLS)	1171383	1	1	1	1
Z	PANEL FILTER (LOWER)	1171382	1	1	1	1
PARTS NOT SHOWN						
)	HARNESS ASY (COMMON)	1171525	1	1	1	1
)	HARNESS ASY (COMP)	1171520	1	1	1	1
)	HARNESS ASY (IFM)	1175707	1	1	1	1
)	HARNESS ASY (IGN CONTROL)	1175166	1	1	1	1
)	PLUG ASY (ECON)	1171405	1	1	1	1
)	PLUG ASY (YAC)	1171523	1	1	1	1

PGE 7.5 - 12.5 Ton

NOTE: This illustration is for reference only. Your unit may differ in appearance or may not include all components shown.



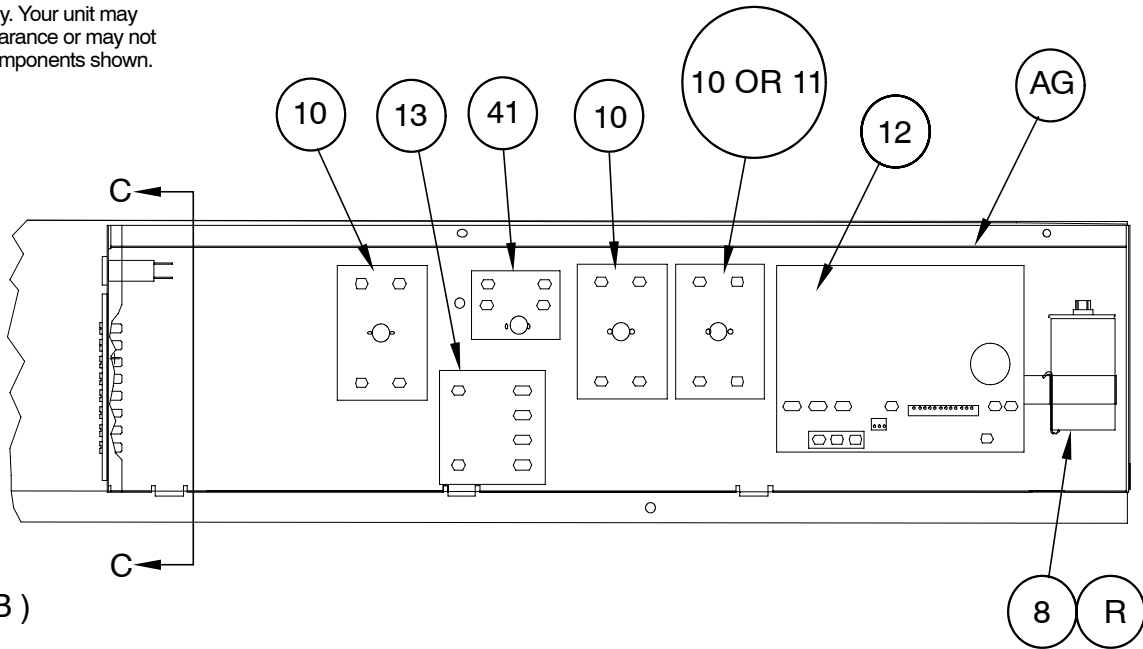
FRONT VIEW



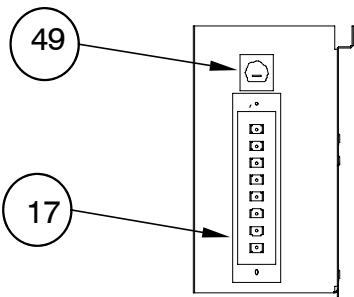
REAR VIEW

PGE 7.5 - 12.5 Ton

NOTE: This illustration is for reference only. Your unit may differ in appearance or may not include all components shown.

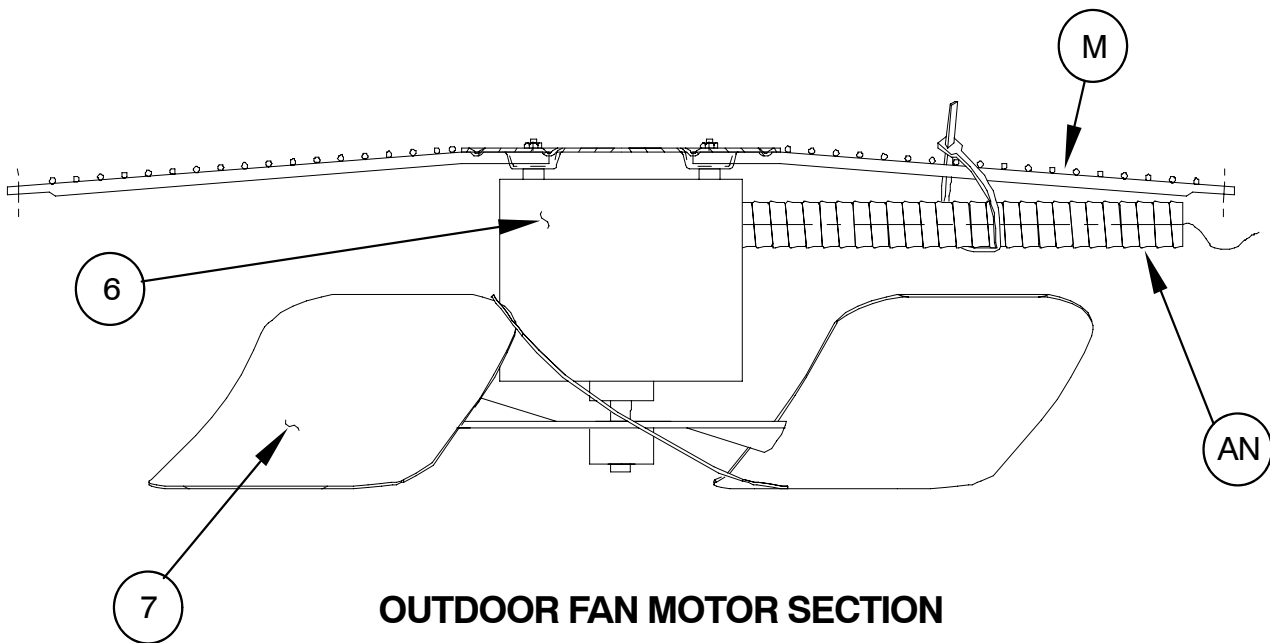


(CB)



VIEW C-C

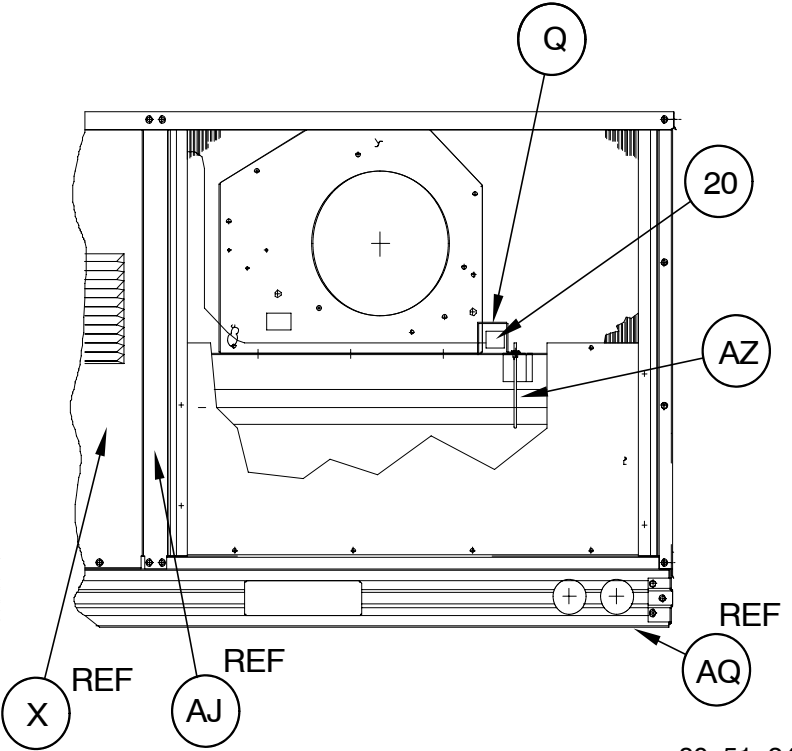
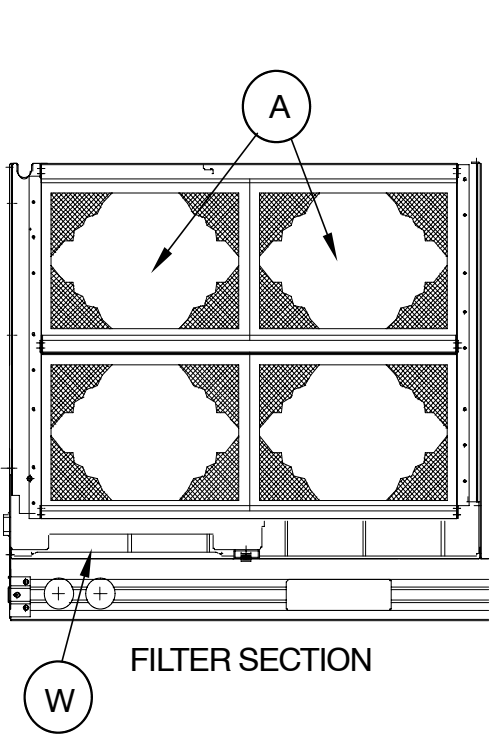
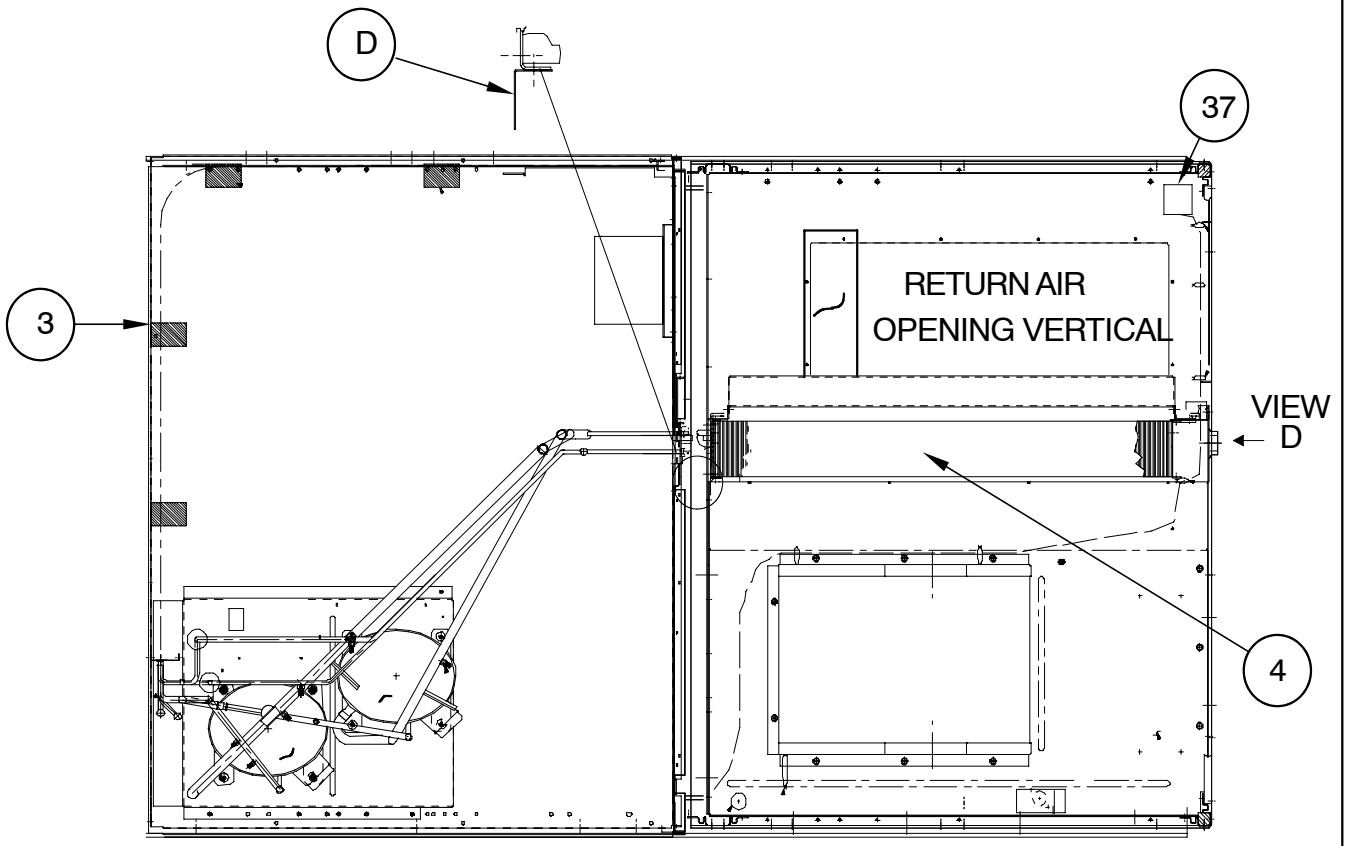
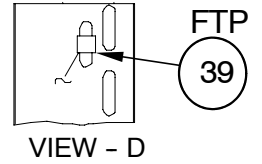
CONTROL BOX ASY.



OUTDOOR FAN MOTOR SECTION

PGE 7.5 - 12.5 Ton

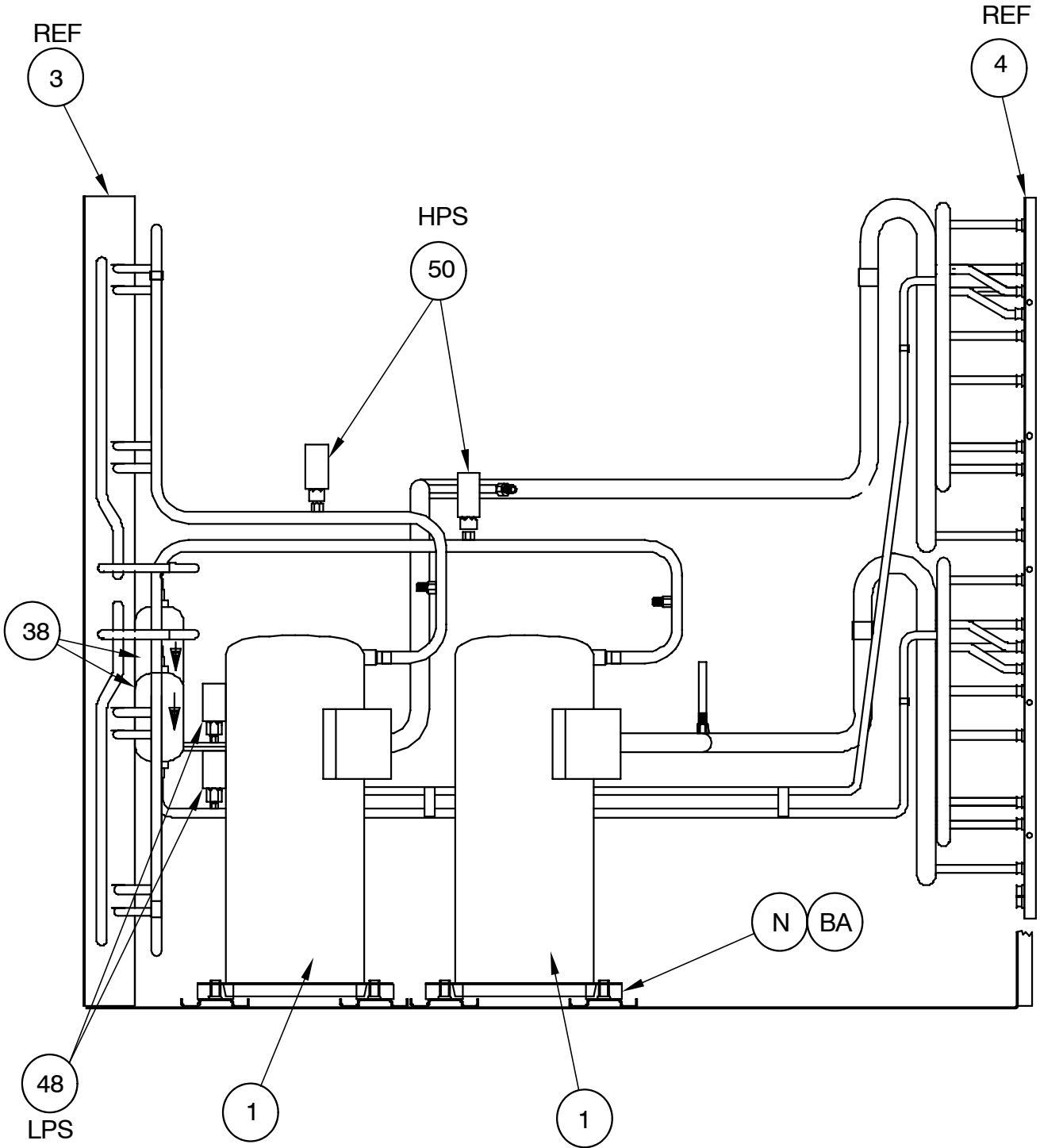
NOTE: This illustration is for reference only. Your unit may differ in appearance or may not include all components shown.



80-51-24

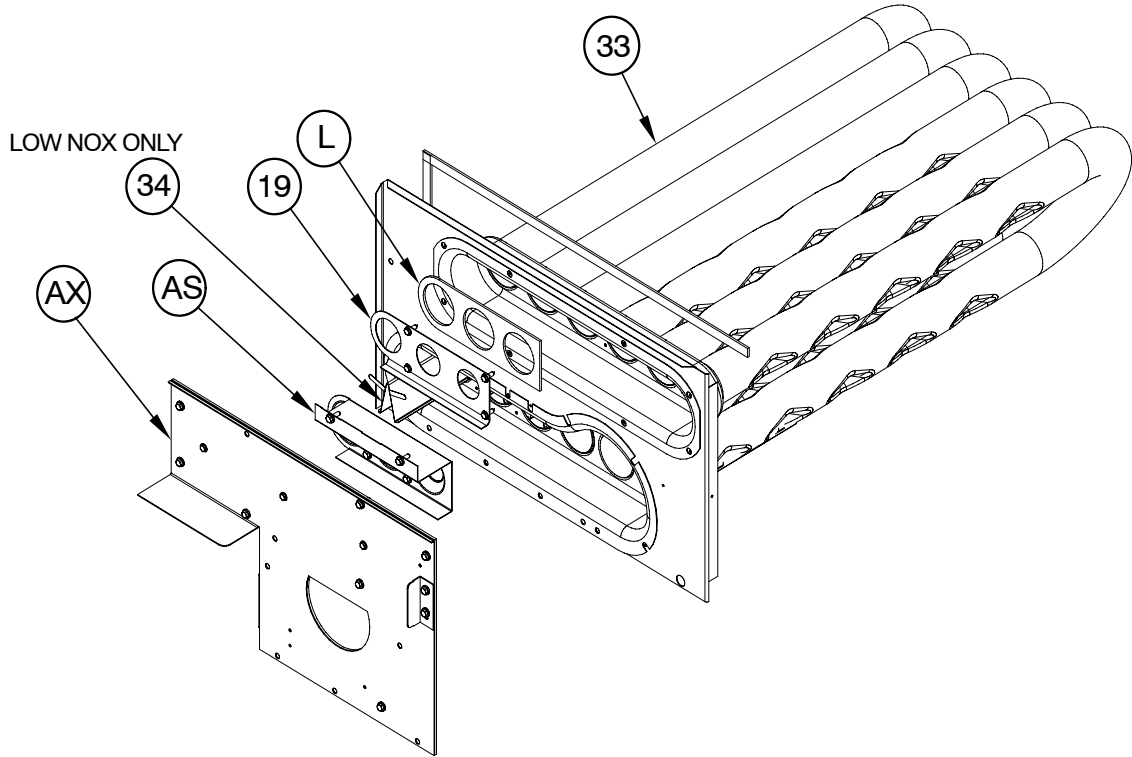
PGE 7.5 - 12.5 Ton

NOTE: This illustration is for reference only. Your unit may differ in appearance or may not include all components shown.

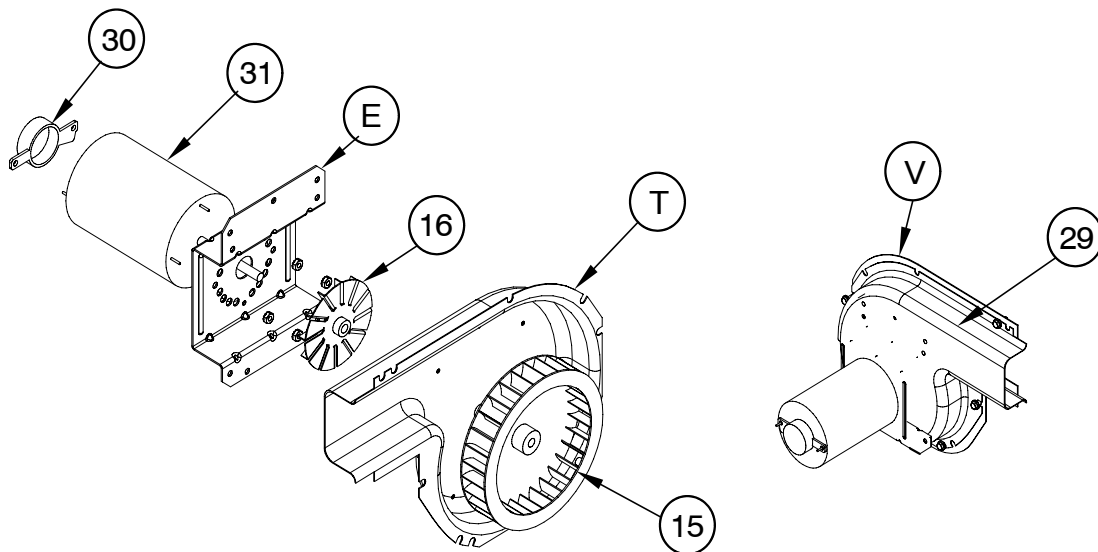


PGE 7.5 - 12.5 Ton

NOTE: This illustration is for reference only. Your unit may differ in appearance or may not include all components shown.



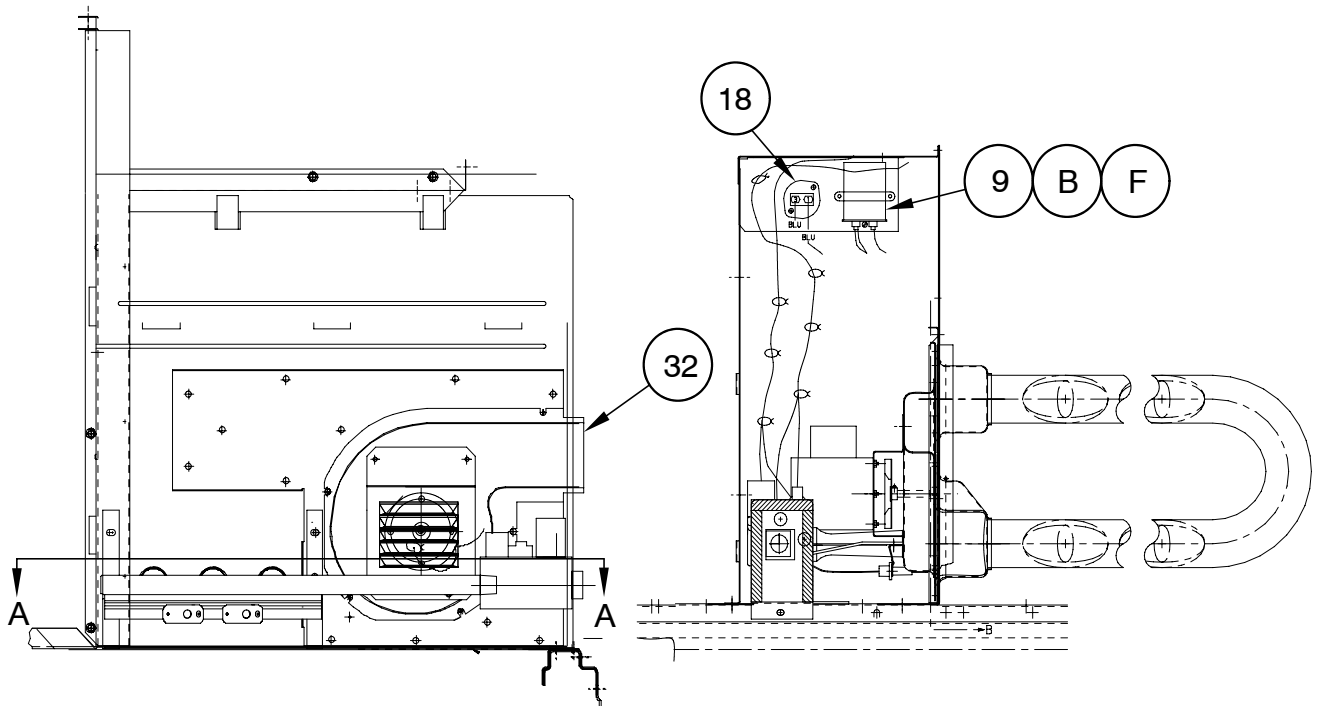
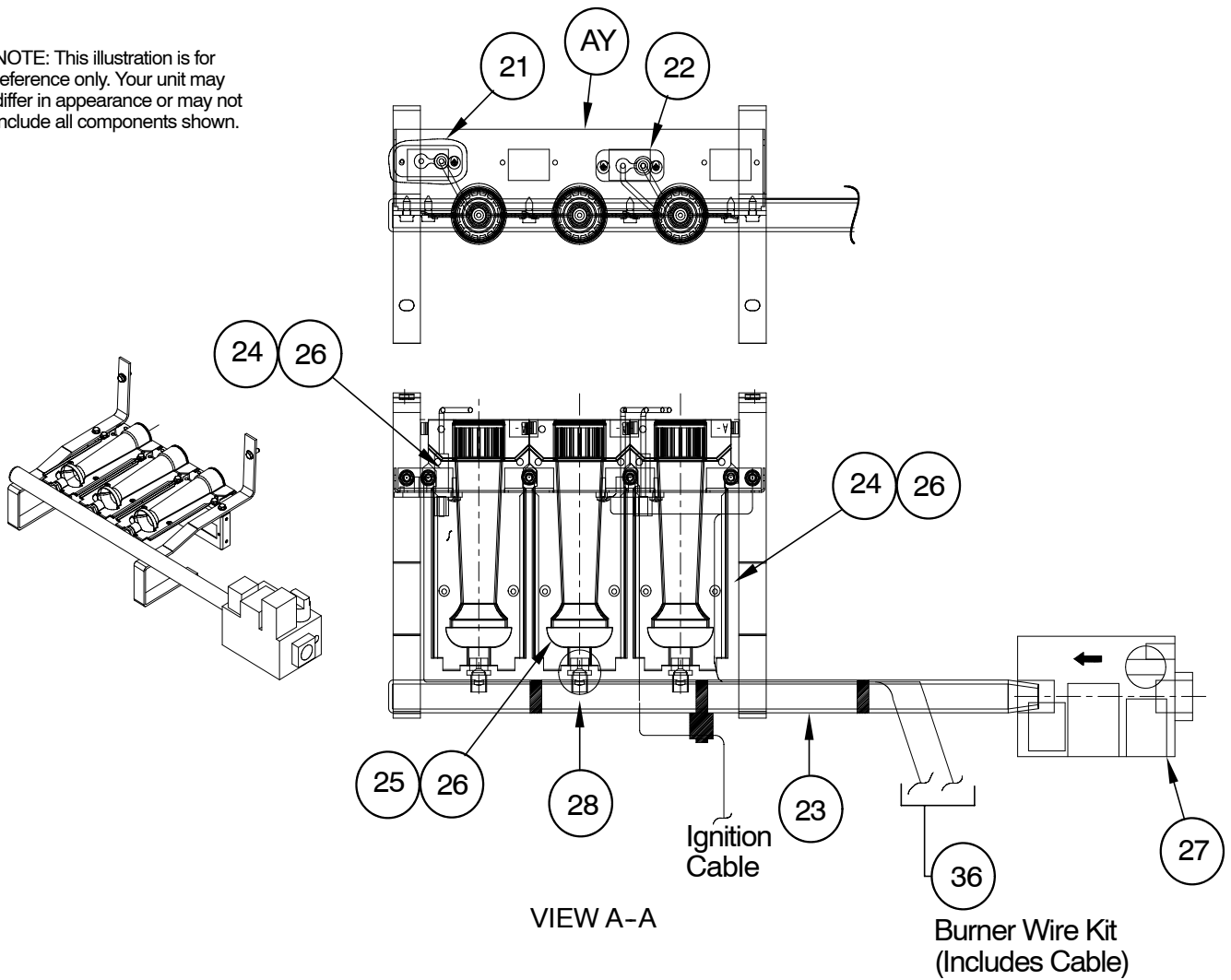
HEAT EXCHANGER



INDUCED DRAFT MOTOR

PGE 7.5 - 12.5 Ton

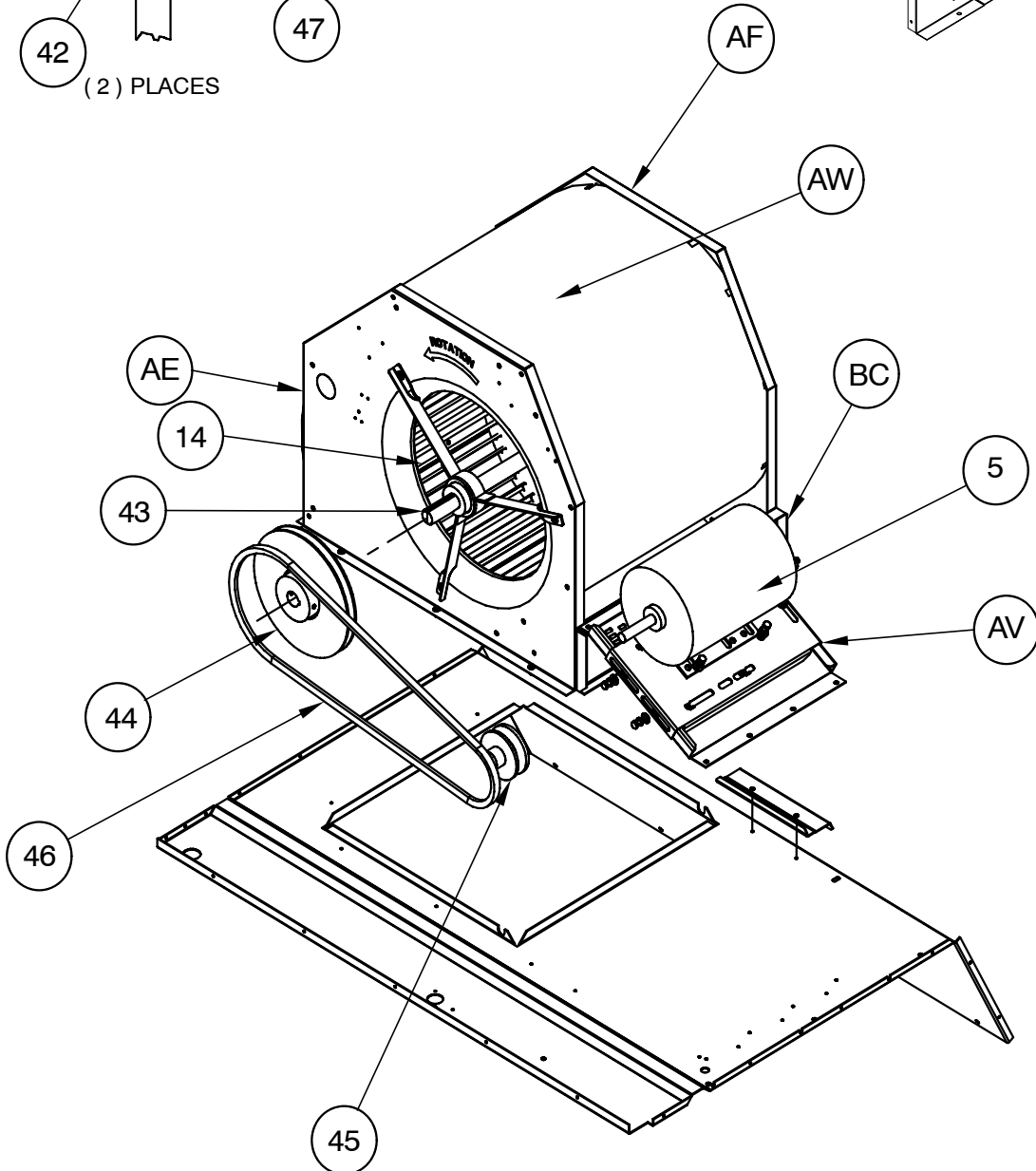
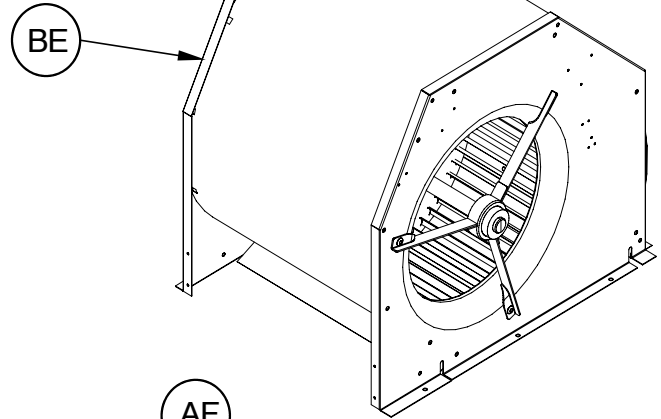
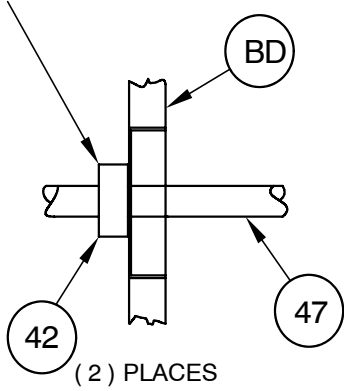
NOTE: This illustration is for reference only. Your unit may differ in appearance or may not include all components shown.



PGE 7.5 & 8.5 Ton

NOTE: This illustration is for reference only. Your unit may differ in appearance or may not include all components shown.

LOCKING COLLAR

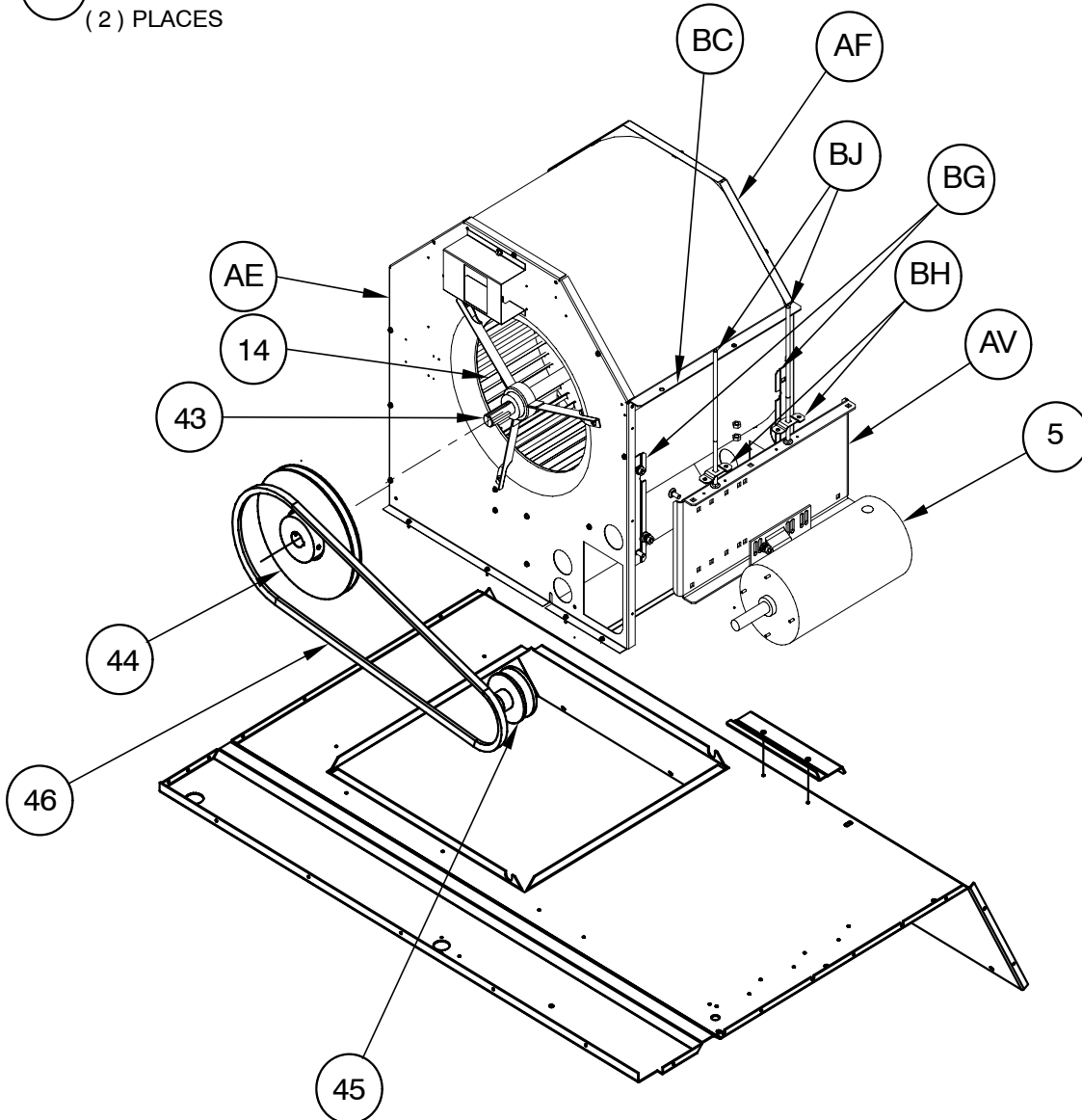
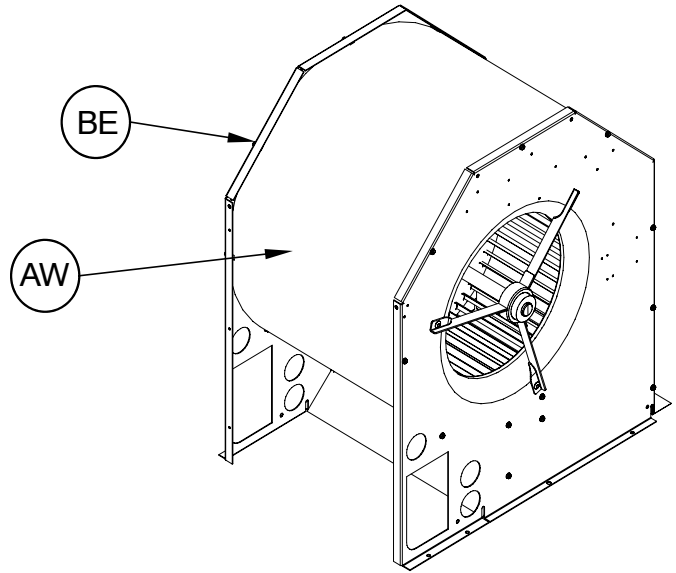
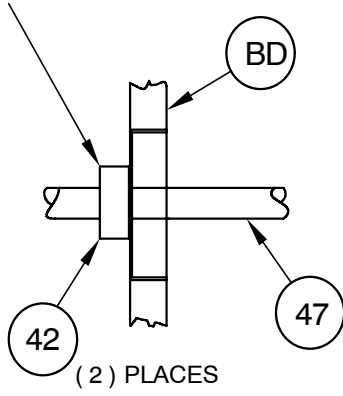


INDOOR FAN SECTION

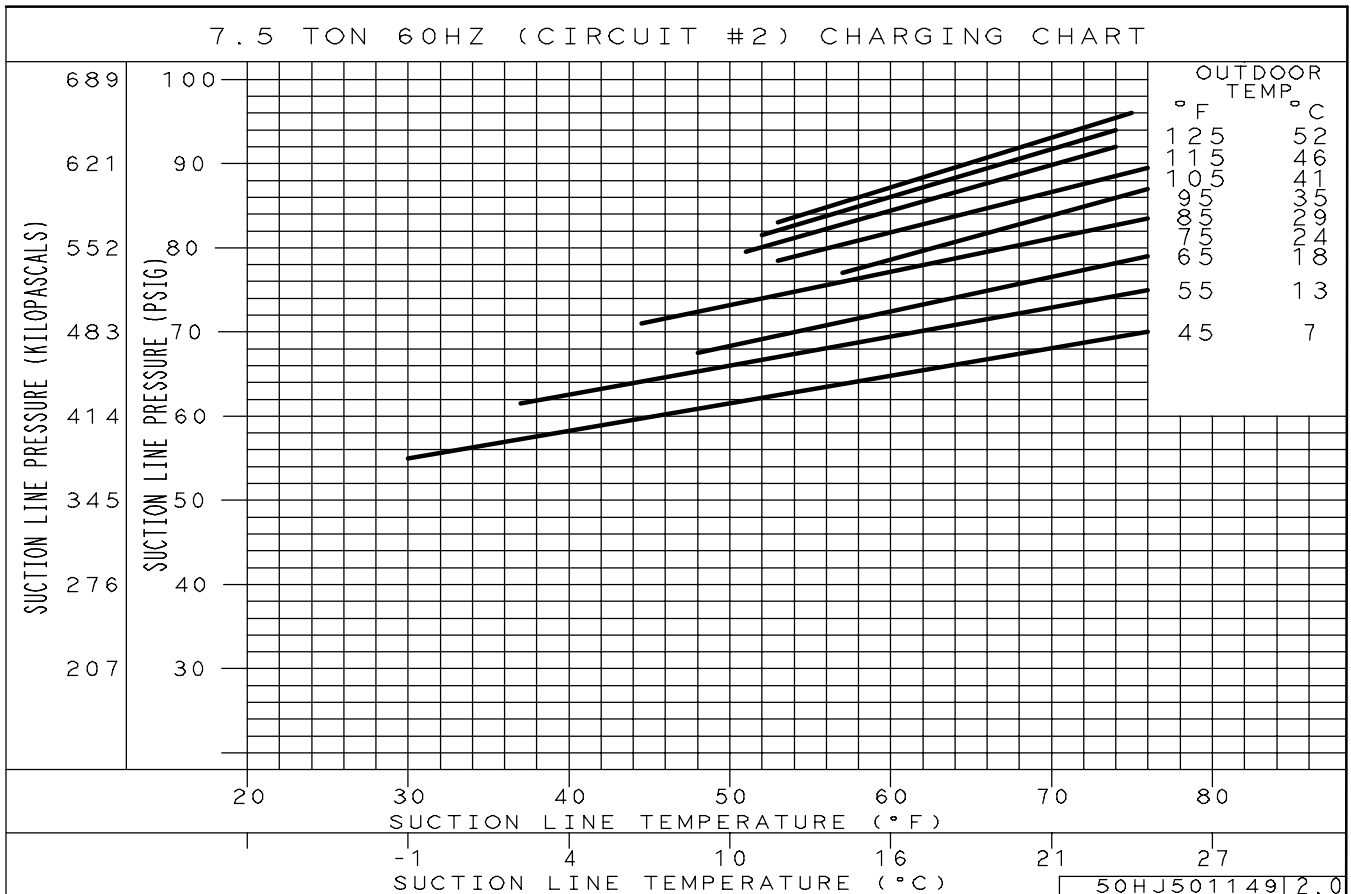
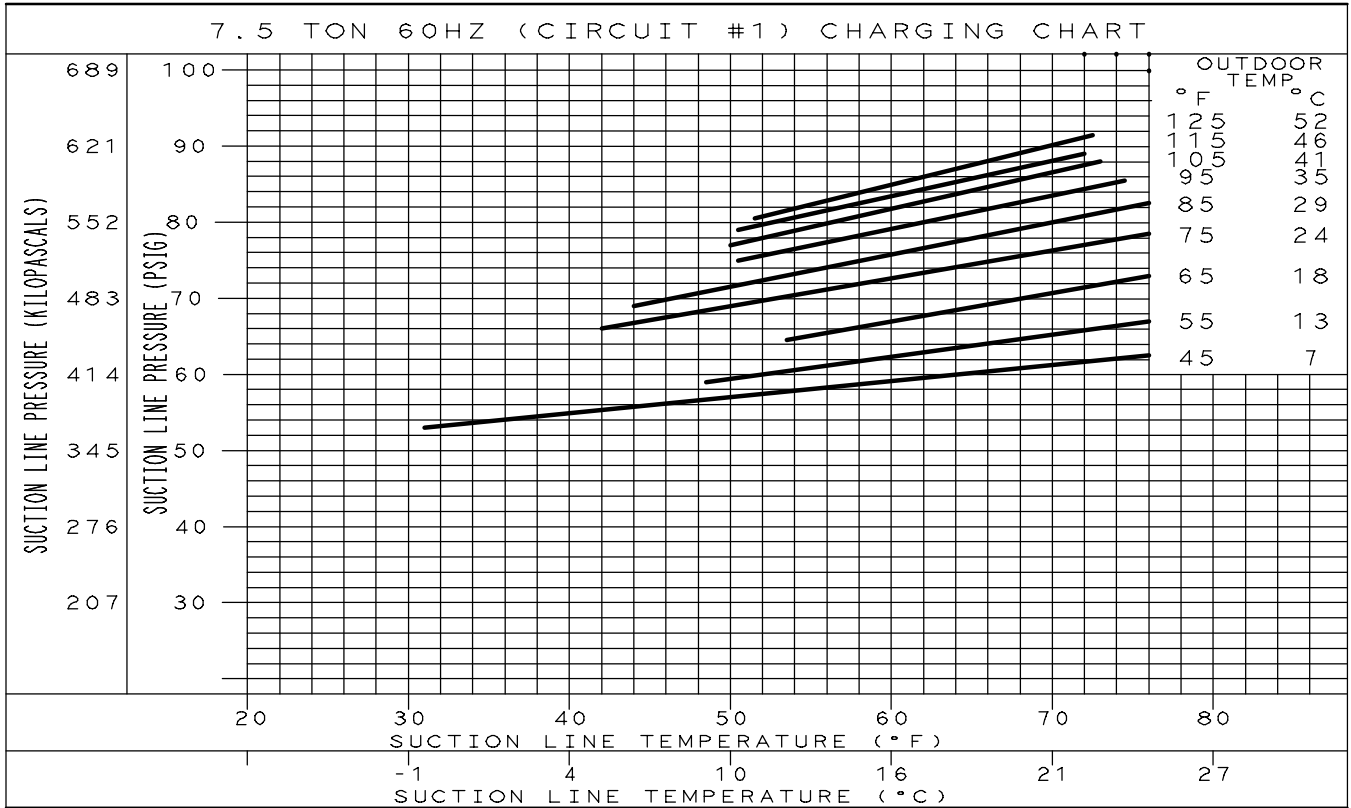
PGE 10 & 12.5 Ton

NOTE: This illustration is for reference only. Your unit may differ in appearance or may not include all components shown.

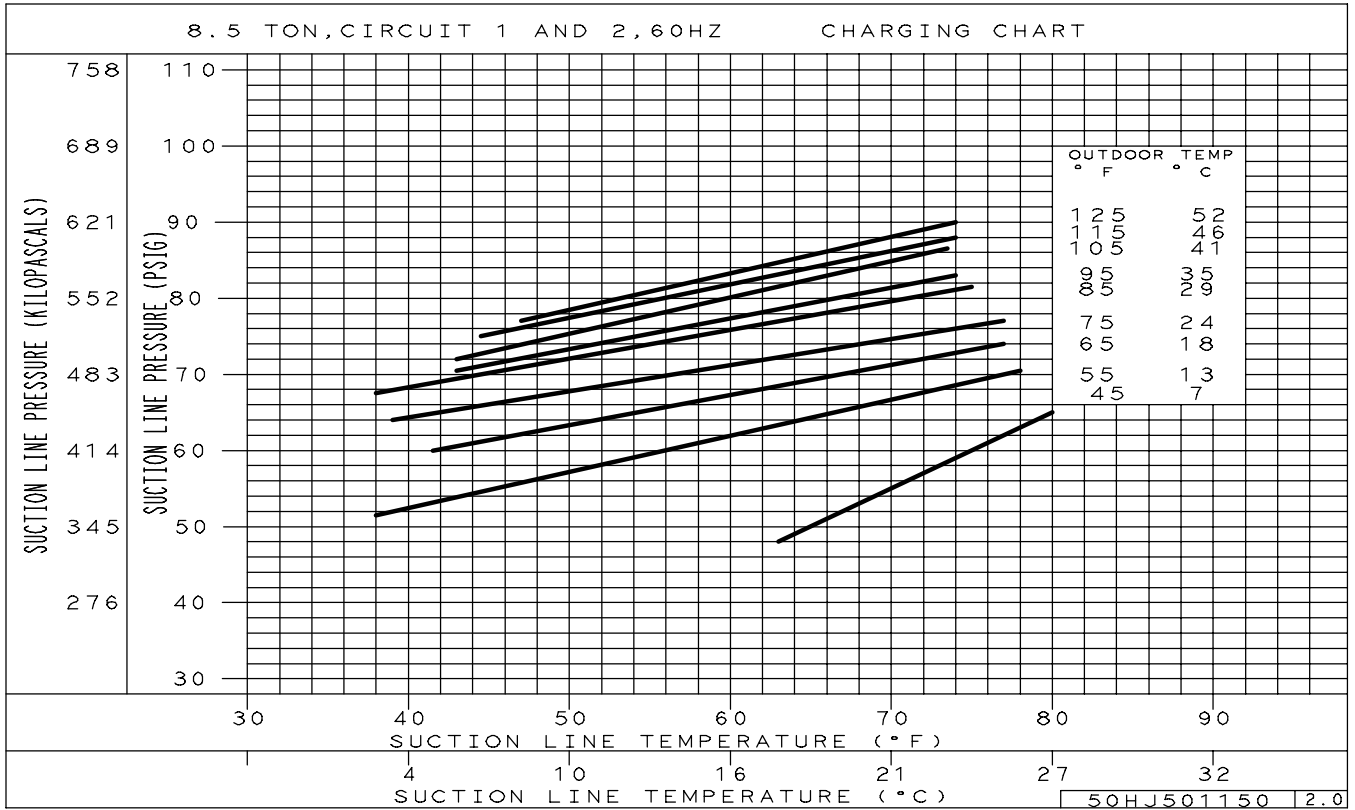
LOCKING COLLAR

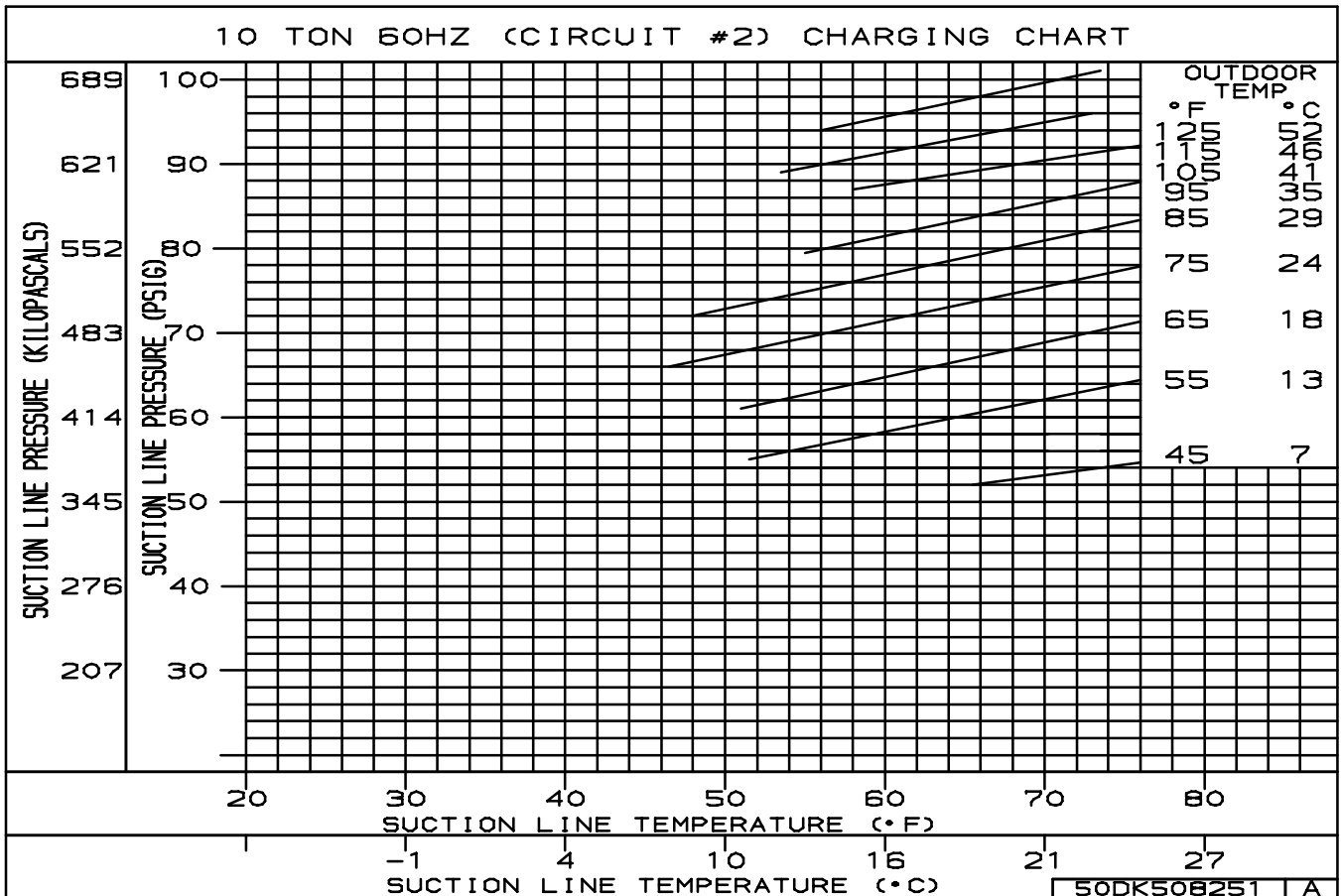
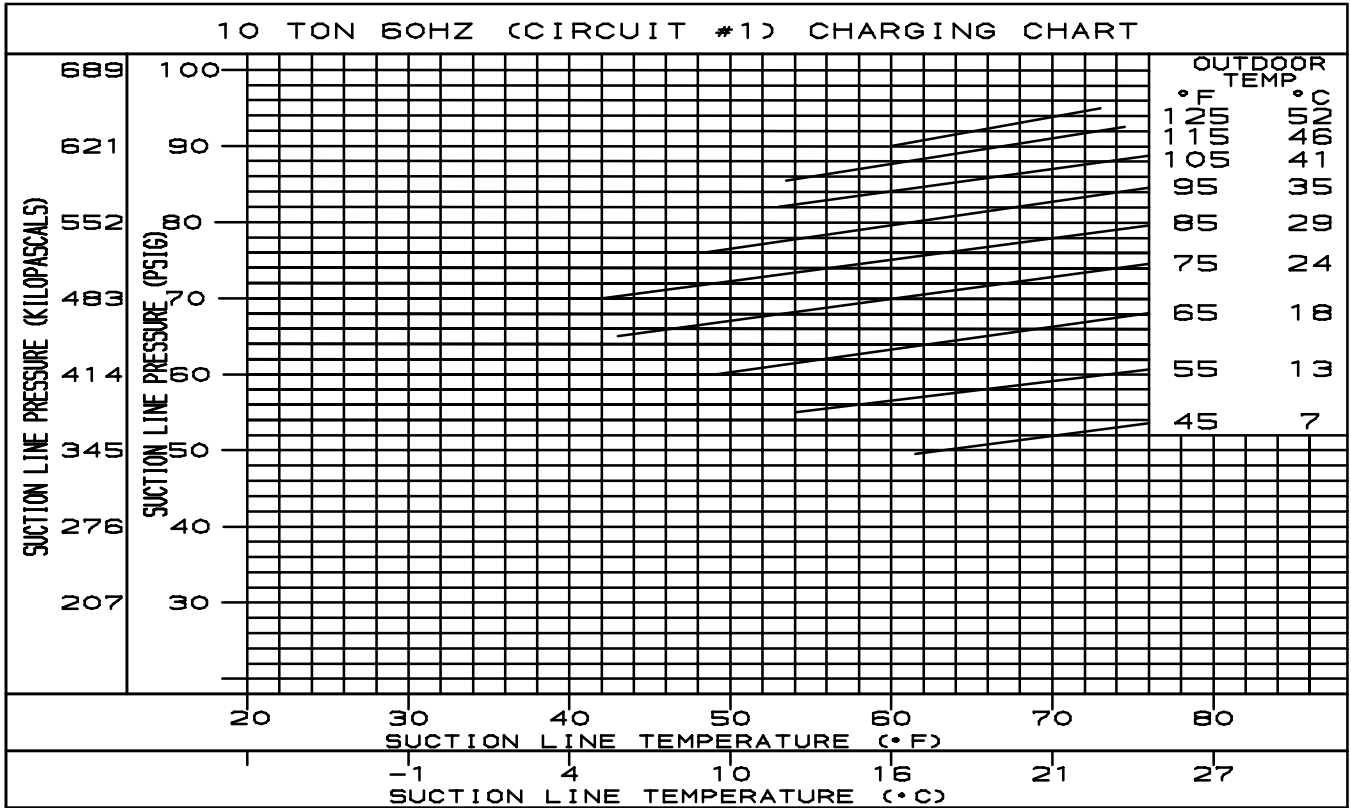


INDOOR FAN SECTION



50HJ501149 2.0

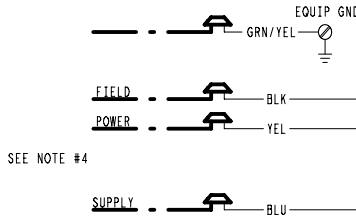




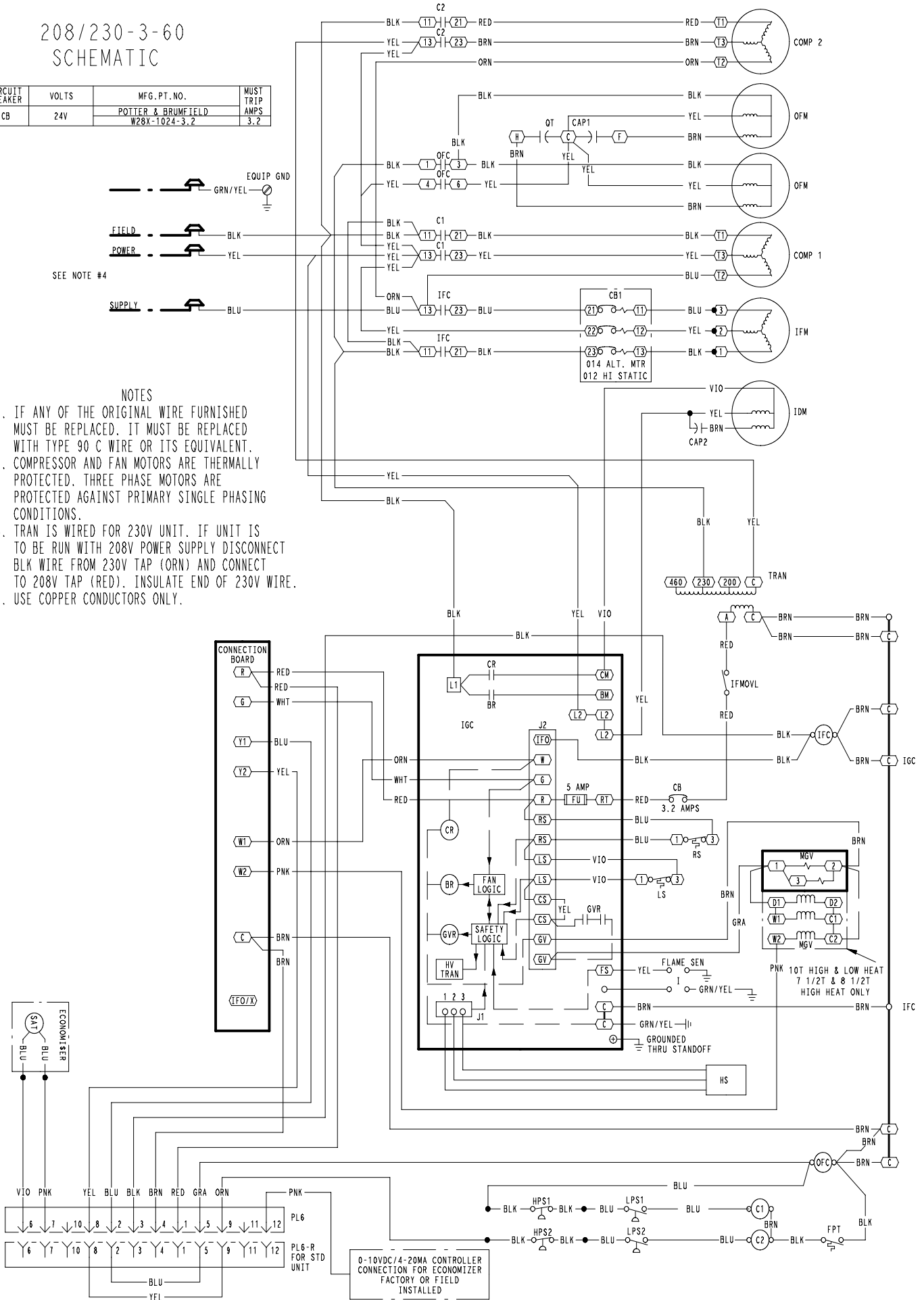
50DK508251 | A

208/230-3-60 SCHEMATIC

CIRCUIT BREAKER	VOLTS	MFG. PT. NO.	MUST TRIP AMPS
CB	24V	POTTER & BRUMFIELD W28X-1024-3.2	3.2

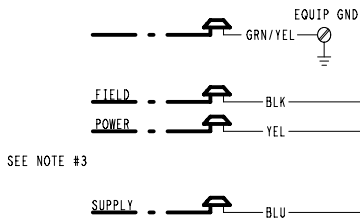


- NOTES
- IF ANY OF THE ORIGINAL WIRE FURNISHED MUST BE REPLACED. IT MUST BE REPLACED WITH TYPE 90 C WIRE OR ITS EQUIVALENT.
 - COMPRESSOR AND FAN MOTORS ARE THERMALLY PROTECTED. THREE PHASE MOTORS ARE PROTECTED AGAINST PRIMARY SINGLE PHASING CONDITIONS.
 - TRAN IS WIRED FOR 230V UNIT. IF UNIT IS TO BE RUN WITH 208V POWER SUPPLY DISCONNECT BLK WIRE FROM 230V TAP (ORN) AND CONNECT TO 208V TAP (RED). INSULATE END OF 230V WIRE.
 - USE COPPER CONDUCTORS ONLY.

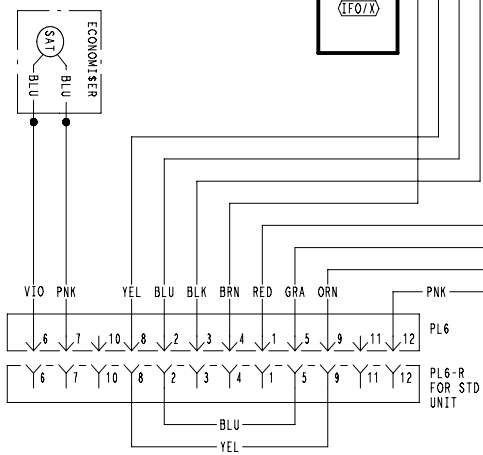
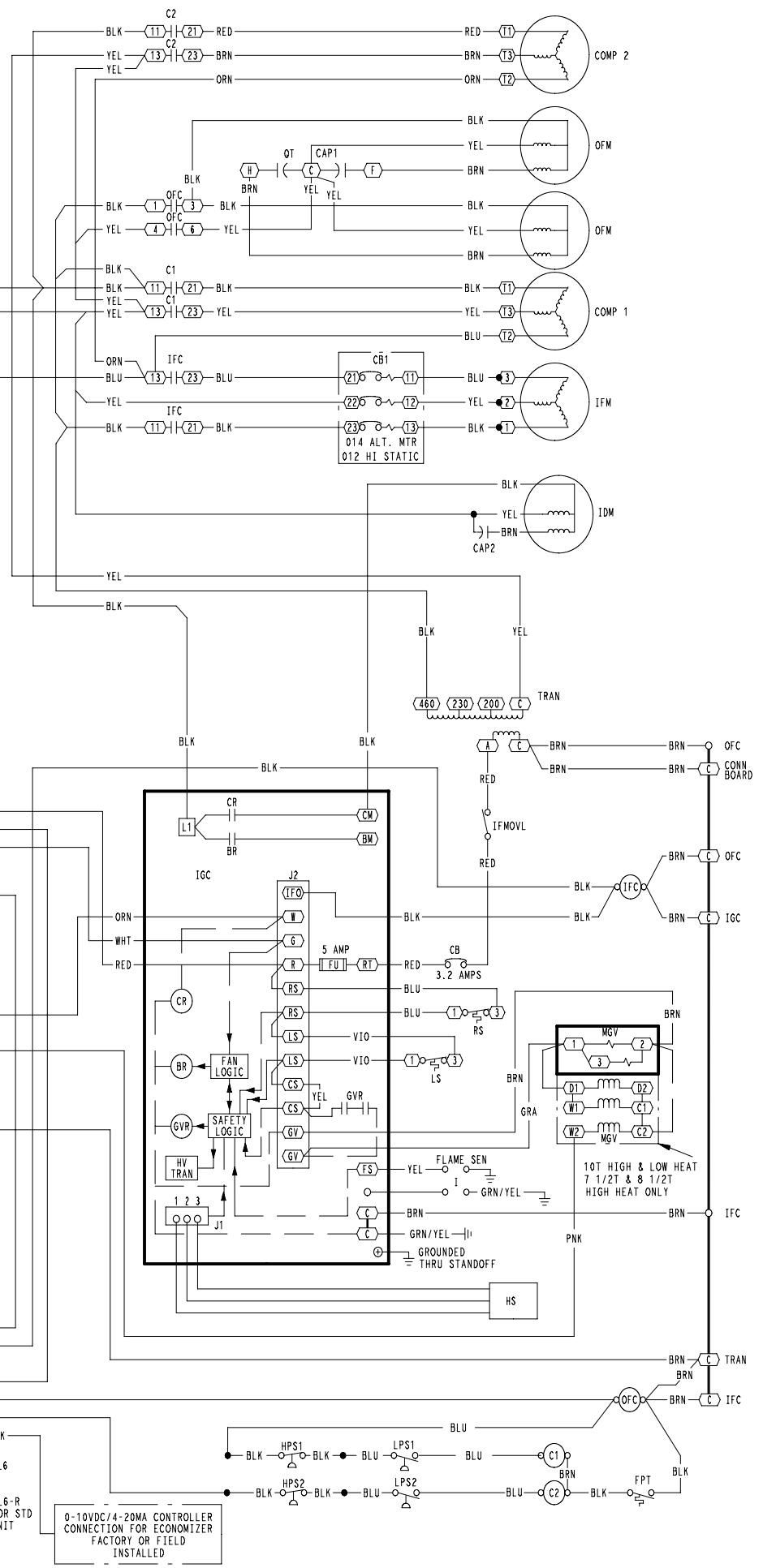


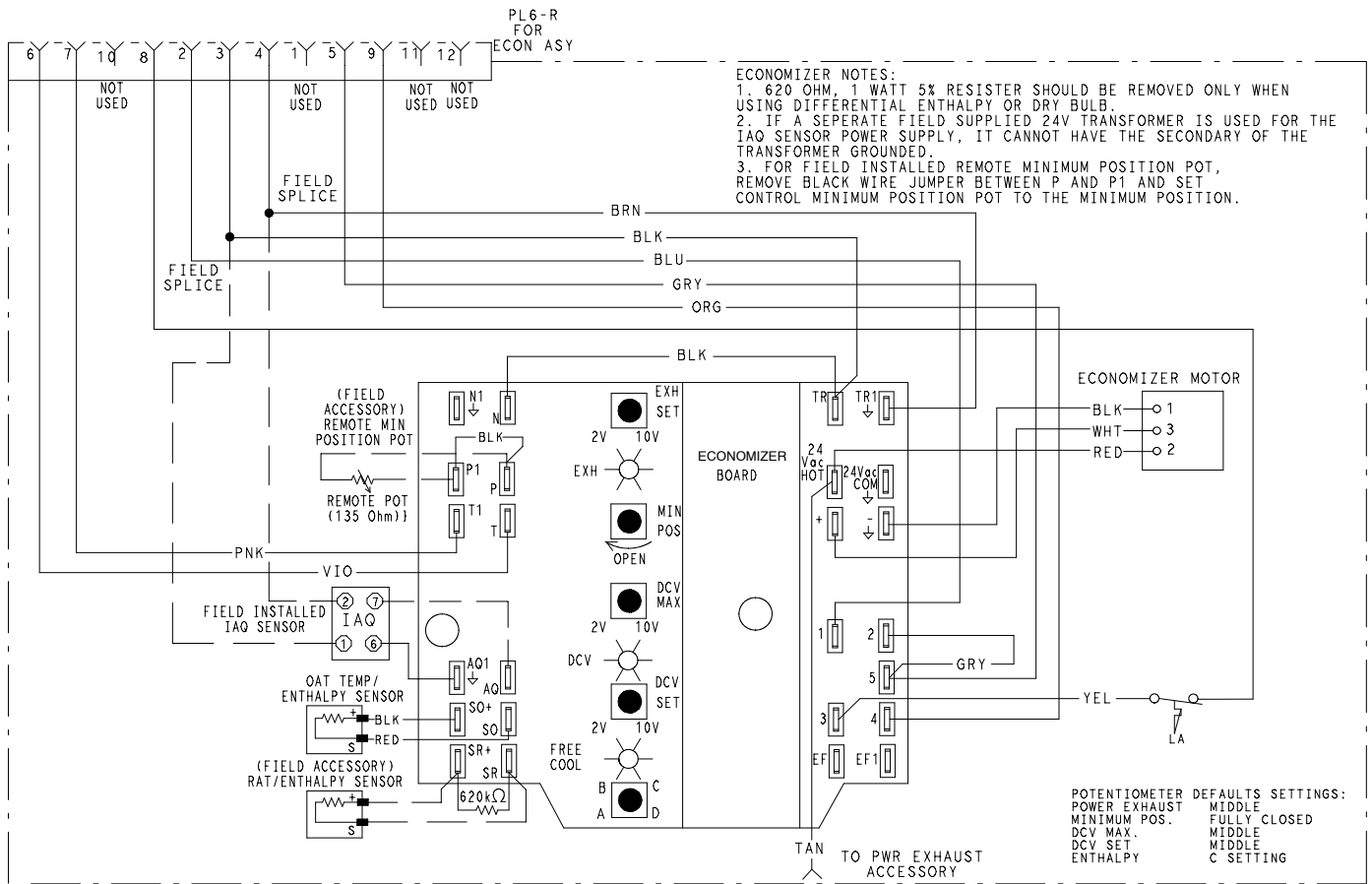
460-3-60 SCHEMATIC

CIRCUIT BREAKER	VOLTS	MFG. PT. NO.	MUST TRIP AMPS
CB	24V	POTTER & BRUMFIELD W28X-1024-3.2	3.2
CB1 014	460-3-60	HEINEMANN AIRPAX CF3-Z228-41 219-3-2600-486	8.5

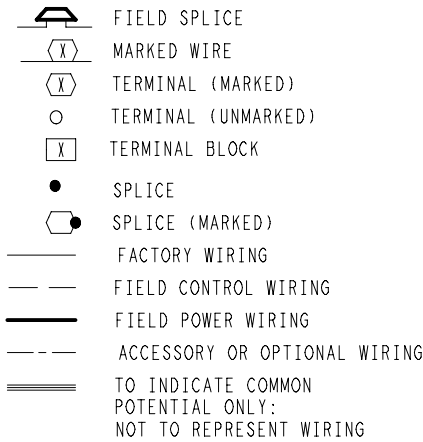


- NOTES
- IF ANY OF THE ORIGINAL WIRE FURNISHED MUST BE REPLACED. IT MUST BE REPLACED WITH TYPE 90 C WIRE OR ITS EQUIVALENT.
 - COMPRESSOR AND FAN MOTORS ARE THERMALLY PROTECTED. THREE PHASE MOTORS ARE PROTECTED AGAINST PRIMARY SINGLE PHASING CONDITIONS.
 - USE COPPER CONDUCTORS ONLY.

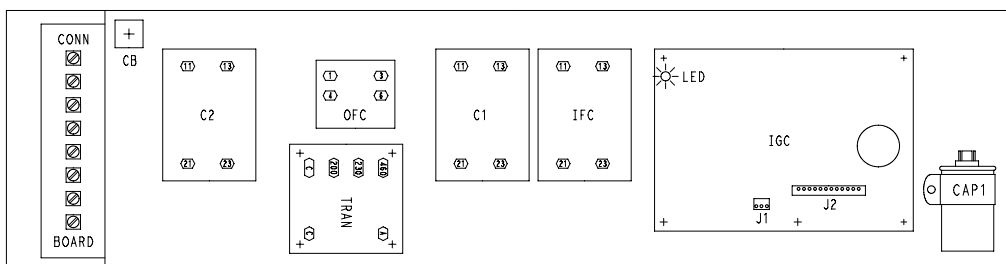




LEGEND



- C CONTACTOR, COMPRESSOR
- CB CIRCUIT BREAKER
- CH CRANKCASE HEATER
- CLO COMPRESSOR LOCKOUT
- COMP COMPRESSOR MOTOR
- EQUIP EQUIPMENT
- FPT FREEZE UP PROTECTION THERMOSTAT
- GND GROUND
- HPS HIGH PRESSURE SWITCH
- HS HALL EFFECT SEN.
- I IGNITOR
- IAO INDOOR AIR QUALITY SEN.
- IARH INDOOR AIR RELATIVE HUMIDITY SEN.
- IDM INDUCED DRAFT MOTOR
- IFC INDOOR FAN CONTACTOR
- IFM INDOOR FAN MOTOR
- IFMOVL INDOOR FAN MOTOR OVERLOAD SWITCH
- IGC INTEGRATED GAS UNIT CONTROLLER
- LA LOW AMBIENT LOCKOUT
- LPS LOW PRESSURE SWITCH
- LS LIMIT SWITCH
- MGV MAIN GAS VALVE
- MTR MOTOR
- OARH OUTDOOR AIR RELATIVE HUMIDITY SEN.
- OAT OUTDOOR AIR TEMP. SEN.
- OFC OUTDOOR FAN CONTACTOR
- OFM OUTDOOR FAN MOTOR
- P PLUG
- PL PLUG ASSEMBLY
- POT POTENTIOMETER
- QT QUADRUPLE TERMINAL
- RAT RETURN AIR TEMP. SEN.
- RS ROLLOUT SWITCH
- SAT SUPPLY AIR TEMP. SEN.
- SEN SENSOR
- TRAN TRANSFORMER



50DK508790 | 6.0

COMPONENT ARRANGEMENT