

95% AFUE Single Stage Furnace Multiposition

FLEXIBILITY

- Dual certified venting (1 or 2 pipes) Direct Vent furnace
- 40"(1016mm) high with wider cabinets, for ease of installation
- Factory shipped for natural gas, with Propane Gas conversion kits available
- Upflow/horizontal/downflow installation
- Vent pipe can be run horizontally or vertically
- Internal condensate drain system

SERVICE

- Self diagnostics
- Entire blower assembly mounted on rails

COMFORT

- Adjustable timed blower off delay
- Thermal lined, one piece steel cabinet for noise reduction
- 24 and 115 VAC humidifier terminal
- Electronic air cleaner terminal
- Insulated blower compartment

EFFICIENCY

- 95% AFUE, upflow & downflow
- Up to 95% AFUE, horizontal
- Single stage gas valve operation
- Multispeed, prelubricated PSC blower motors
- Induced draft blower
- In-shot burners
- California NOx approved

QUALITY

- RPJ III Stainless steel heat exchanger
- Stainless steel secondary heat exchanger
- High temperature limit control prevents overheating
- Dependable hot surface ignition with Silicon Nitride igniter
- Flame roll-out sensors standard

WARRANTY *

- 1 year No Hassle Replacement™ limited warranty
- Lifetime heat exchanger limited warranty with timely registration
- 5 year parts limited warranty
 - With timely registration, an additional 5 year parts limited warranty
- * Applies to original purchaser/homeowner, some limitations may apply. See warranty certificate for complete details.



Illustrations and photographs are only representative. Some product models may vary.

WARNING

This furnace is not designed for use in mobile homes, trailers, or recreational vehicles. Such use could result in property damage and/or death.



As an Energy Star® Partner, International Comfort Products has determined that this product meets the ENERGY STAR® guidelines for energy efficiency. Ask your contractor for details or visit www.energystar.gov



Use of the AHRI Certified TM Mark indicates a manufacturer's participation in the program. For verification of certification for individual products, go to www.ahridirectory.org.

UPFLOW/HORIZONTAL/DOWNFLOW (NATURAL GAS)									
Model Number	Input (MBTUH)	Cooling Capacity @ .5 in wc (125 Pa)	AFUE			Dimensions H x W x D		Shipping Wt.	
			Upflow	Horizontal	Downflow	Inches	Millimeters	Lbs	Kg
H9MPX060F12A	60	1.5 – 3.0 TON	95.0	95.0	95.0	40 x 19 ¹ / ₈ x 29	1016 x 486 x 737	153	69
H9MPX080J12A	80	2.0 – 3.0 TON	95.0	94.4	95.0	40 x 22 ³ / ₄ x 29	1016 x 578 x 737	172	78
H9MPX080J16A	80	2.0 – 4.0 TON	95.0	95.0	95.0	40 x 22 ³ / ₄ x 29	1016 x 578 x 737	180	82
H9MPX100L20A	100	3.5 – 5.0 TON	95.0	95.0	95.0	40 x 24 ¹ / ₂ x 29	1016 x 622 x 737	193	88

FURNACE SPECIFICATIONS

Model Number	NATURAL GAS	*9MPX060F12	*9MPX080J12	*9MPX080J16	*9MPX100L20
INPUT - (BTUH)	Upflow	60,000	80,000	80,000	100,000
	Downflow/Horizontal	60,000	80,000	80,000	97,500
HTG. CAP. - (BTUH)	Upflow	58,000	77,000	77,000	96,000
	Downflow/Horizontal	58,000	77,000	77,000	94,000
UPFLOW AFUE % (ICS)		95.0	95.0	95.0	95.0
HORIZONTAL AFUE % (ICS)		95.0	94.4	95.0	95.0
DOWNFLOW AFUE % (ICS)		95.0	95.0	95.0	95.0
NOx (Ng/J)		<40			
TEMP. RISE DEGREES - (°F/°C)		30-60/17-33	35-65/19-46	30-60/17-33	30-60/17-33
VOLTS/HZ/PH		115/1/60			
MIN./MAX. VOLTAGE		104/127			
RATING PLATE AMPS.		10	10.5	13.6	14.8
TRANSFORMER - (V.A.)		40			
GAS PIPE SIZE - in(mm)		1/2 (12.7)			
VENT SIZE - in(mm) *		1.5, 2 or 3 (38.1, 50.8 or 76.2) OD	2 or 3 (50.8 or 76.2) OD		
COOLING CAP.		3.0	3.0	4.0	5.0
FILTER SIZE required - in(mm)		16 x 25 x 1 (406 x 635 x 25) (1)			16 x 25 x 1 (2) (406 x 635 x 25) (2)
DIMENSIONS HEIGHT - in(mm)		40 (1016)			
WIDTH X DEPTH - in(mm)		19 ¹ / ₈ x 29 (486 x 737)	22 ³ / ₄ x 29 (578 x 737)	22 ³ / ₄ x 29 (578 x 737)	24 ¹ / ₂ x 29 (622 x 737)
WEIGHT - Lbs. (Kg)		153 (69)	172 (78)	180 (82)	193 (88)

* Vent size may vary depending on length, number of elbows, standard vent or direct vent. See Installation Instructions.

* Denotes Brand (C, T, H)

BLOWER PERFORMANCE

Model Number	NATURAL GAS	*9MPX060F12 (1)(2)	*9MPX080J12 (1)(2)	*9MPX080J16 (1)(2)	*9MPX100L20 (1)(2)
BLOWER SIZE - D x W in(mm)		11 x10 (279 x 254)	11 x10 (279 x 254)	11 x10 (279 x 254)	11 x10 (279 x 254)
MOTOR H.P. (TYPE)		PSC / ¹ / ₂	PSC / ¹ / ₃	PSC / ¹ / ₂	PSC / ³ / ₄
MOTOR SPEEDS		4	4	4	4

AIRFLOW DATA - CFM (L/s)

*9MPX060F12 (1)(2) * Denotes Brand

External Static Pressure (in wc/Pa)	Speed Tap		HI		MED H		MED L		LO	
	in wc	Pa	CFM	L/s	CFM	L/s	CFM	L/s	CFM	L/s
	0.1	25	1478	697	1204	568	901	425	703	332
0.2	50	1418	669	1154	545	864	408	649	306	
0.3	75	1350	637	1103	521	818	386	588	277	
0.4	100	1280	604	1053	497	765	361	538	254	
0.5	125	1201	567	993	469	720	340	488	230	
0.6	149	1116	527	924	436	672	317	459	217	
0.7	174	1023	483	846	399	620	293	408	193	
0.8	199	931	439	764	361	558	263	365	172	
0.9	224	825	389	683	322	489	231	317	150	
1	249	730	345	590	278	428	202	233	110	

*9MPX080J16 (1)(2) * Denote Brand

External Static Pressure (in wc/Pa)	Speed Tap		HI		MED H		MED L		LO	
	in wc	Pa	CFM	L/s	CFM	L/s	CFM	L/s	CFM	L/s
	0.1	25	2032	959	1690	798	1246	588	922	435
0.2	50	1952	921	1650	779	1250	590	898	424	
0.3	75	1874	884	1601	756	1226	579	872	412	
0.4	100	1785	842	1533	723	1187	560	838	395	
0.5	125	1688	797	1462	690	1151	543	806	380	
0.6	149	1593	752	1381	652	1090	514	769	363	
0.7	174	1482	699	1287	607	1014	479	711	336	
0.8	199	1360	642	1182	558	918	433	643	303	
0.9	224	1231	581	1053	497	790	373	570	269	
1	249	1052	496	850	401	678	320	488	230	

*9MPX080J12 (1)(2) * Denotes Brand

External Static Pressure (in wc/Pa)	Speed Tap		HI		MED H		MED L		LO	
	in wc	Pa	CFM	L/s	CFM	L/s	CFM	L/s	CFM	L/s
	0.1	25	1456	687	1326	626	1123	530	976	461
0.2	50	1440	680	1312	619	1112	525	941	444	
0.3	75	1420	670	1280	604	1085	512	909	429	
0.4	100	1379	651	1241	586	1043	492	870	411	
0.5	125	1325	625	1209	571	1002	473	818	386	
0.6	149	1261	595	1155	545	952	449	784	370	
0.7	174	1208	570	1082	511	893	421	714	337	
0.8	199	1115	526	1001	472	792	374	640	302	
0.9	224	1007	475	868	410	702	331	567	268	
1	249	830	392	746	352	608	287	491	232	

*9MPX100L20 (1)(2) * Denotes Brand

External Static Pressure (in wc/Pa)	Speed Tap		HI		MED H		MED L		LO	
	in wc	Pa	CFM	L/s	CFM	L/s	CFM	L/s	CFM	L/s
	0.1	25	2240	1057	2137	1008	1993	941	1820	859
0.2	50	2163	1021	2062	973	1934	913	1768	834	
0.3	75	2083	983	1992	940	1872	883	1722	813	
0.4	100	2002	945	1916	904	1801	850	1656	782	
0.5	125	1912	902	1833	865	1723	813	1590	750	
0.6	149	1821	859	1745	824	1636	772	1513	714	
0.7	174	1727	815	1654	781	1547	730	1426	673	
0.8	199	1618	764	1551	732	1437	678	1325	625	
0.9	224	1502	709	1430	675	1315	621	1199	566	
1	249	1356	640	1275	602	1159	547	1047	494	

NOTE: (1) Data Based on Bottom Only or One Side return.

(2) Gray area is above maximum temperature rise range.

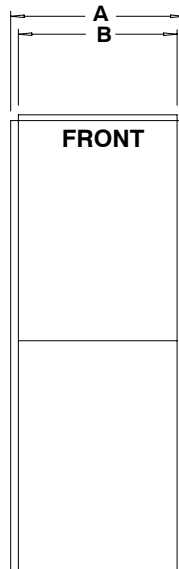
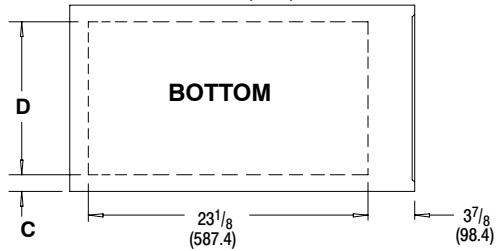
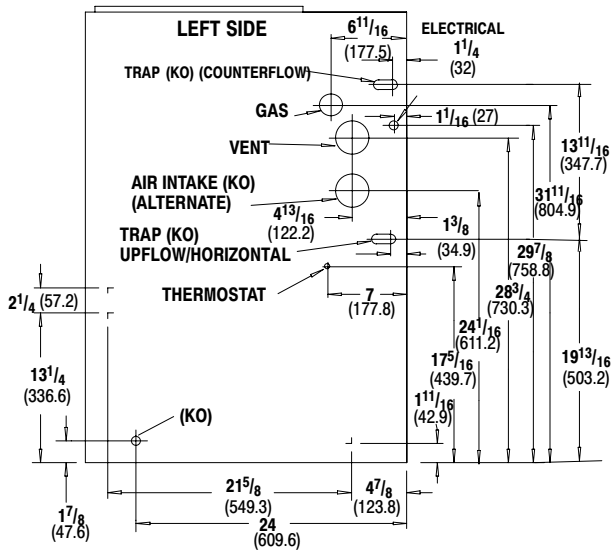
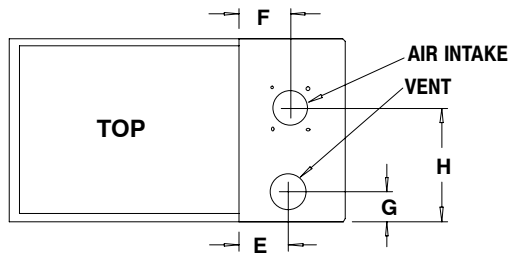
CFM - Cubic Feet Per Minute airflow. Filter required for each return-air inlet.

Airflow performance includes 1" (25.4mm) washable [600 FPM (3.0 m/s) max] filter media.

MAX CFM (L/s) for Factory Washable Filters		
Filter Size (in/mm)	CFM	L/s
14" X 25" / 356 x 635	1400	661
16" X 25" / 406 x 635	1600	755
20" X 25" / 508 x 635	2000	944
24" X 25" / 610 x 635	2500	1180
Max CFM (m/s) based on 600 FPM (3.0 m/s)		

NOTE: Disposable filters are typically rated at 300 FPM (1.5 m/s). These filters only allow half the airflow when compared to 600 FPM (3.0 m/s) filters.

DIMENSIONS - in(mm)



MINIMUM CLEARANCES TO COMBUSTIBLE MATERIALS FOR ALL UNITS	
REAR	0
FRONT (combustion air openings in furnace and in structure)	3" (76.2)
Required For Service	*24" (609.6)
ALL SIDES OF SUPPLY PLENUM	1" (25.4)
SIDES	0
VENT	0
TOP OF FURNACE	1" (25.4)

*30" (762mm) clearance recommended for furnace removal.

Horizontal position: Line contact is permissible only between lines formed by intersections of top and two sides of furnace jacket, and building joists, studs or framing.

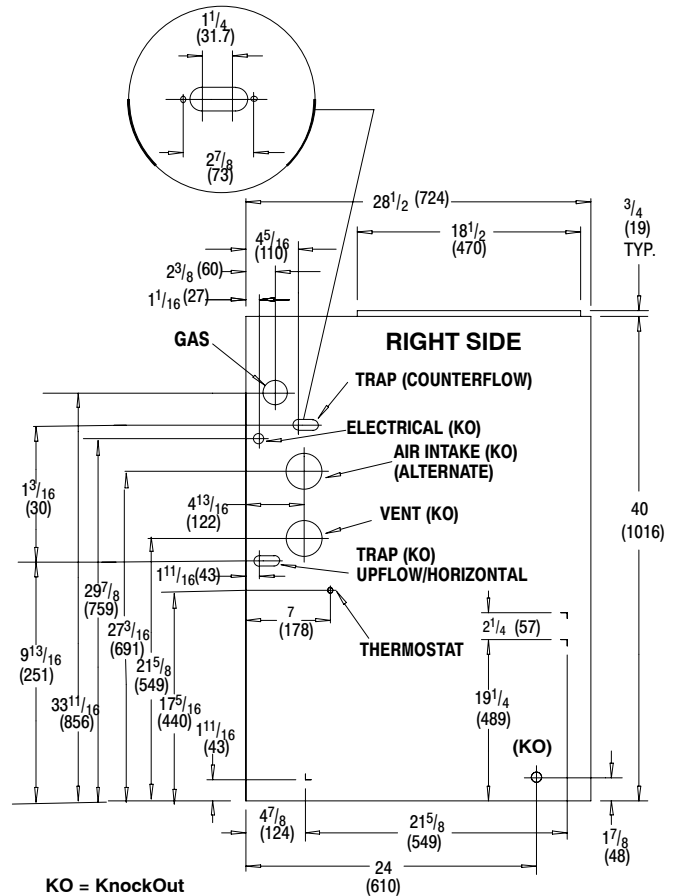
NOTE: Evaporator "A" coil drain pan dimensions may vary from furnace duct opening size. Always consult evaporator specifications for duct size requirements.

Furnace is designed for bottom return or side return.

Return air through back of furnace is NOT allowed.

Unit Capacity	Cabinet		Bottom		Top			
	A	B	C	D	E	F	G	H
*9MPX060F12	19 1/8 (486)	17 7/8 (448)	2 1/8 (54)	14 3/4 (375)	4 3/8 (111)	4 1/2 (114)	2 1/2 (64)	9 1/2 (241)
*9MPX080J12	22 3/4 (578)	21 1/4 (540)	1 15/16 (49)	18 3/4 (476)	4 3/8 (111)	4 1/2 (114)	2 5/8 (67)	11 3/8 (289)
*9MPX080J16	22 3/4 (578)	21 1/4 (540)	1 15/16 (49)	18 3/4 (476)	4 3/8 (111)	4 1/2 (114)	2 5/8 (67)	11 3/8 (289)
*9MPX100L20	24 1/2 (622)	23 (584)	7/16 (11)	23 (584)	4 3/8 (111)	4 1/2 (114)	2 1/4 (57)	12 1/4 (311)

* Denotes Brand (C, T, H)



KO = KnockOut

Drawing is representative, but some models may vary.

MODEL NUMBER IDENTIFICATION GUIDE										
Brand Identifier * = Brand Specific	*	9	MP	X	060	F	1 2	A	#	Engineering Rev. Denotes minor change
Model Efficiency 8 = Non-Condensing, 80+% Gas Furnace 9 = Condensing, 90+% Gas Furnace										Marketing Digit Denotes major change
Installation Configuration MP = Multiposition – Upflow/Horizontal/Downflow										Cooling Airflow 12 = 1200 CFM 16 = 1600 CFM 20 = 2000 CFM
Major Design Feature 1 = One (Single) Pipe 2 = Two Pipe D = 1 or 2 Pipe L = Low NOx X = Extra Efficiency										Cabinet Width B = 15.5" Wide F = 19.1" Wide J = 22.8" Wide L = 24.5" Wide
										Input (Nominal MBTUH)

ACCESSORIES		
Model Number	Description	Used With Models
NAHA00701LP 1178473**	Gas Conversion Kits – Natural gas to Propane conversion Kit. Allows field conversion to Propane gas.	All *9MPX Models
NAHA00701NG 1178474**	Gas Conversion Kits – Propane to natural gas conversion kit. Allows field conversion to natural gas.	All *9MPX Models
NAHA001FF	Filter Kits – External filter frame. 16" x 25" (406mm x 635mm)	Side Return (All Furnaces) Bottom Return (All "F" 19 ¹ / ₈ " Furnaces under 1600 CFM)
NAHA001FP	External filter frame. 16" x 25" (406mm x 635mm) Bulk Pack Kit – Qty 10	
NAHA002FF	Filter Kits – Bottom return filter frame kit 20" x 25" (508mm x 635mm)	All "J" 22 ³ / ₄ " Furnaces
NAHA002FP	Bottom return filter frame kit 20" x 25" (508mm x 635mm) Bulk Pack Kit – Qty 10	
NAHH002SB	Combustible Floor Subbase – Furnace ONLY: All 19 ¹ / ₄ " wide furnace	*9MPX060
NAHH003SB	Combustible Floor Subbase – Furnace ONLY: All 22 ³ / ₄ " wide furnace	*9MPX080
NAHH010SB	Combustible Floor Subbase – Furnace ONLY: All 24 ¹ / ₂ " wide furnace	*9MPX100
NAHH005SB	Subbase – Furnace w/ 19 ¹ / ₄ " cased coil	*9MPX060 Counterflow furnace w/ 19 ¹ / ₄ " cased coil
NAHH006SB	Subbase – Furnace w/ 22 ³ / ₄ " cased coil	*9MPX080 Counterflow furnace w/ 22 ³ / ₄ " cased coil
NAHH009SB	Subbase – Furnace w/ 24 ¹ / ₂ " cased coil	*9MPX100
NAHA001TK	Duct Standoff Filter Kit. To adapt 20" x 25" (508mm x 635mm) filter for single side return.	Side Return (All single return applications with 1600 CFM or greater) Bottom Return (All "F" 19 ¹ / ₈ " Furnaces under 1600 CFM)
NAHA001CA	Coil Adapter for Downflow Furnaces	All Downflow Models
NAHA001NK 612833**	Condensate neutralizer kit – for condensing gas furnaces	All *9MPX Furnaces If Required
NAHA001CV 1011129**	3" (76.2mm) Concentric vent kit – allows single wall penetration for 2 pipe direct vent applications (90+).	*9MPX060 *9MPX080 *9MPX100
NAHA002CV	2" (50.8mm) Concentric vent kit – allows single wall penetration for 2 pipe direct vent applications (90+).	*9MPX060 *9MPX080 *9MPX100
NAHA002WL	To replace Warning Labels, Operating Instructions & Wiring Labels on Blower Door when needed	*9MPX
1177767**	High Altitude Pressure Switch Kit (2 Pressure Switches)	*9MPX060
1177768**	High Altitude Pressure Switch Kit (2 Pressure Switches)	*9MPX080J12 & *9MPX080J16
1177769**	High Altitude Pressure Switch Kit (2 Pressure Switches)	*9MPX100

* Denotes Brand (C, T, H)
** Must be ordered from Service Parts

International Comfort Products, LLC
Lewisburg, TN 37091 U.S.A.
www.GoArcoaire.com