



# C8MPL Product Specifications

## Deluxe 80 Single Stage Furnace

### FLEXIBILITY

- 40" high for ease of installation
- Factory shipped for natural gas, with Propane Gas conversion kits available
- Four position - upflow/downflow/horizontal installation
- Category I venting
- Three position inducer capability
- Common venting with water heater

### SERVICE

- Self diagnostics
- Entire blower assembly mounted on rails

### COMFORT

- Adjustable timed blower OFF delay
- 24 and 115 VAC humidifier terminal
- Electronic air cleaner terminal

### EFFICIENCY

- 80% AFUE efficiency range
- Single stage gas valve operation
- Single stage integrated control
- Multispeed, prelubricated PSC motors
- Induced draft blower
- In-shot burners
- California NOx approved

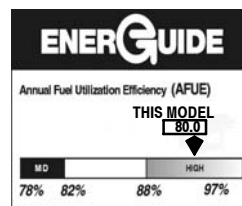
### QUALITY

- RPJ III Aluminized steel heat exchanger
- High temperature limit control prevents overheating
- Direct ignition with Silicon Nitride ignitor
- Flame roll-out sensors standard
- Louvered doors
- One piece prepainted steel cabinet
- Masonry chimney adapter available
- 1 year No Hassle Replacement limited warranty
- 5 year limited parts warranty



Illustrations and photographs are only representative.  
Some product models may vary.

**▲ WARNING**  
This furnace is not designed for use in mobile homes, trailers, or recreational vehicles. Such use could result in property damage and/or death.



UPFLOW/DOWNFLOW/HORIZONTAL (NATURAL GAS)					
Model Number	Heat Exchangers *	Dimensions H x W x D (In.)	Input (MBTUH)	Efficiency AFUE +	Cooling Capacity @ .5 in wc
C8MPL050B12B	20 year	40 x 15 <sup>1</sup> / <sub>2</sub> x 29	50,000	80%	1.5 - 3.0 TON
C8MPL075B12B	20 year	40 x 15 <sup>1</sup> / <sub>2</sub> x 29	75,000	80%	1.5 - 3.0 TON
C8MPL075F16B	20 year	40 x 19 <sup>1</sup> / <sub>8</sub> x 29	75,000	80%	2.5 - 4.0 TON
C8MPL100F20B	20 year	40 x 19 <sup>1</sup> / <sub>8</sub> x 29	100,000	80%	3.5 - 5.0 TON
C8MPL100J20B	20 year	40 x 22 <sup>3</sup> / <sub>4</sub> x 29	100,000	80%	3.5 - 5.0 TON
C8MPL125J20B	20 year	40 x 22 <sup>3</sup> / <sub>4</sub> x 29	125,000	80%	3.5 - 5.0 TON

\* LIMITED 20 YEAR WARRANTY

## FURNACE SPECIFICATIONS MULTI-POSITION

Model Number	NATURAL GAS	*8MPL					
		050B12	075B12	075F16	100F20	100J20	125J20
INPUT (btuh)		50,000	75,000	75,000	100,000	100,000	125,000
HTG. CAP. (btuh)		40,000	60,000	60,000	81,000	81,000	101,000
AFUE % (ICS)		80%	80%	80%	80%	80%	80%
TEMP. RISE DEGREES (°F/°C)		35-65/19-36	30-60/17-33	30-60/17-33	35-65/19-36	35-65/19-36	35-65/19-36
VOLTS/PH/HZ		115/1/60	115/1/60	115/1/60	115/1/60	115/1/60	115/1/60
MIN./MAX. VOLTAGE		104/127	104/127	104/127	104/127	104/127	104/127
RATING PLATE AMPS.		9.7	9.0	9.7	12.0	12.0	12.0
TRANSFORMER (V.A.)		40	40	40	40	40	40
GAS PIPE SIZE (IN.)		1/2	1/2	1/2	1/2	1/2	1/2
FLUE COLLAR SIZE		4"	4"	4"	4"	4"	4"
COOLING CAP.		3	3	4	5	5	5
SHIPPING WEIGHT (LBS.)		128	134	140	156	166	172
DIMENSIONS (in.) HEIGHT		40	40	40	40	40	40
WIDTH X DEPTH		15 1/2 x 29	15 1/2 x 29	19 1/8 x 29	19 1/8 x 29	22 3/4 x 29	22 3/4 x 29

(ICS) = Isolated Combustion System

## ACCESSORIES

Model Number	Description	Used With Models
<b>TWINNING KIT</b>		
NAHA004WK	Twining kit. Allows operation of two identical-size model furnaces.	ALL *8MPL FURNACES
<b>GAS CONVERSION KITS</b>		
NAHA001LP (1172958+)	Natural gas to Propane conversion Kit. Allows field conversion to Propane gas.	ALL *8MPL FURNACES
NAHA001NG (1172960+)	Propane to natural gas conversion kit. Allows field conversion to natural gas. (Single Stage)	ALL *8MPL FURNACES
<b>FILTER KITS</b>		
NAHA001FF NAHA001FP	External filter frame. 16" x 25"	Side Return (All Furnaces) Bottom Return (All "F" 19 1/8" Furnaces under 1600 CFM)
NAHA002FF NAHA002FP	Bottom return filter frame kit 20" x 25".	(All "J" 22 3/4" Furnaces)
NAHA003FF NAHA003FP	Bottom or side return filter frame kit 14" x 25".	(All "B" 15 1/2" Furnaces)
NAHA001TK	Duct Standoff Filter Kit. To adapt 20" x 25" filter for single side return.	Side Return (All single return applications with 1600 CFM or greater) Bottom Return (All "F" 19 1/8" Furnaces under 1600 CFM)
<b>COMBUSTIBLE FLOOR SUBBASES</b>		
NAHH001SB	Subbase Furnace ONLY: All 15 1/2" wide furnace models	
NAHH002SB	Subbase Furnace ONLY: All 19 1/4" wide furnace models	
NAHH003SB	Subbase Furnace ONLY: All 22 3/4" wide furnace models	
NAHH004SB	Subbase Furnace w/15 1/2" cased coil	Counterflow furnace *8MPL050-075
NAHH005SB	Subbase Furnace w/19 1/4" cased coil	Counterflow furnace *8MPL075-100F
NAHH006SB	Subbase Furnace w/22 3/4" cased coil	Counterflow furnace *8MPL100-125J
<b>MASONRY CHIMNEY ADAPTER</b>		
NAHA001DH	Chimney adapter (6")	*8MPL050, 075, 100
NAHA002DH	Chimney adapter (7")	*8MPL125
<b>VENT GUARD</b>		
NAHA002VC	Downflow vent guard	All Furnaces in the Downflow application
<b>COIL ADAPTER</b>		
NAHA001CA	Coil Adapter for Downflow Furnaces	All Furnaces in the Downflow Application
<b>WARNING LABEL REPLACEMENT KIT</b>		
NAHA002WL	To replace Warning Labels, Operating Instructions & Wiring Labels on Blower Door when needed	*8MPL

+ Fast part number

\* Denotes Brand (C, H, T)

## BLOWER PERFORMANCE MULTI-POSITION

Model Number	*8MPL					
	050B12(1)(6)	075B12(1)(6)	075F16(1)(3)(6)	100F20(2)(4)(6)	100J20(2)(6)	125J20(2)(5)(6)
BLOWER INCHES (DIA. x WIDTH)	11x8	11x8	11 x 10	11 x 10	11 x 10	11x10
MOTOR H.P. (TYPE)	1/2/PSC	1/2/PSC	1/2/PSC	1/2/PSC	1/2/PSC	1/2/PSC
MOTOR SPEEDS	4	4	4	4	4	4

### Circulation Air Blower Data #

.10 ESP IN. W.C.	LOW	472	695	598	831	773	860
	MEDIUM LOW	704	963	841	1125	1045	1149
	MEDIUM HIGH	1167	1220	1427	1582	1453	1666
	HIGH	1387	1559	1861	2216	2147	2147
.20 ESP IN. W.C.	LOW	419	670	499	823	766	848
	MEDIUM LOW	671	946	795	1124	1029	1154
	MEDIUM HIGH	1135	1202	1406	1585	1461	1622
	HIGH	1338	1511	1816	2198	2142	2137
.30 ESP IN. W.C.	LOW	365	644	400	814	755	836
	MEDIUM LOW	638	928	748	1123	1037	1158
	MEDIUM HIGH	1102	1183	1384	1585	1469	1577
	HIGH	1288	1463	1770	2179	2128	2126
.40 ESP IN. W.C.	LOW	328	616	345	798	737	821
	MEDIUM LOW	605	901	708	1120	1037	1149
	MEDIUM HIGH	1069	1151	1364	1583	1469	1569
	HIGH	1241	1412	1724	2127	2113	2137
.50 ESP IN. W.C.	LOW	290	588	289	781	712	805
	MEDIUM LOW	572	873	667	1117	1020	1140
	MEDIUM HIGH	1035	1118	1343	1577	1459	1561
	HIGH	1194	1361	1677	2074	2078	2148
.60 ESP IN. W.C.	LOW	250	564	263	749	683	782
	MEDIUM LOW	547	822	625	1085	1013	1111
	MEDIUM HIGH	987	1068	1299	1559	1446	1539
	HIGH	1132	1300	1612	1992	2029	2035
.70 ESP IN. W.C.	LOW	209	540	236	717	647	758
	MEDIUM LOW	522	771	582	1053	979	1081
	MEDIUM HIGH	939	1017	1254	1541	1424	1516
	HIGH	1070	1239	1547	1909	1963	1922
.80 ESP IN. W.C.	LOW	---	502	---	663	603	710
	MEDIUM LOW	483	723	530	1009	942	1045
	MEDIUM HIGH	880	959	1192	1457	1400	1472
	HIGH	1004	1161	1454	1827	1892	1845
.90 ESP IN. W.C.	LOW	---	463	---	609	554	661
	MEDIUM LOW	443	675	477	964	894	1009
	MEDIUM HIGH	820	900	1129	1373	1347	1428
	HIGH	937	1083	1360	1745	1795	1767
1.00 ESP IN. W.C.	LOW	---	413	---	561	497	614
	MEDIUM LOW	370	615	436	888	828	925
	MEDIUM HIGH	753	835	1016	1307	1262	1357
	HIGH	858	998	1262	1641	1705	1663

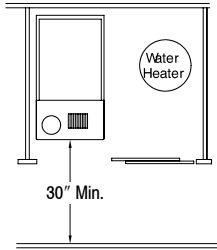
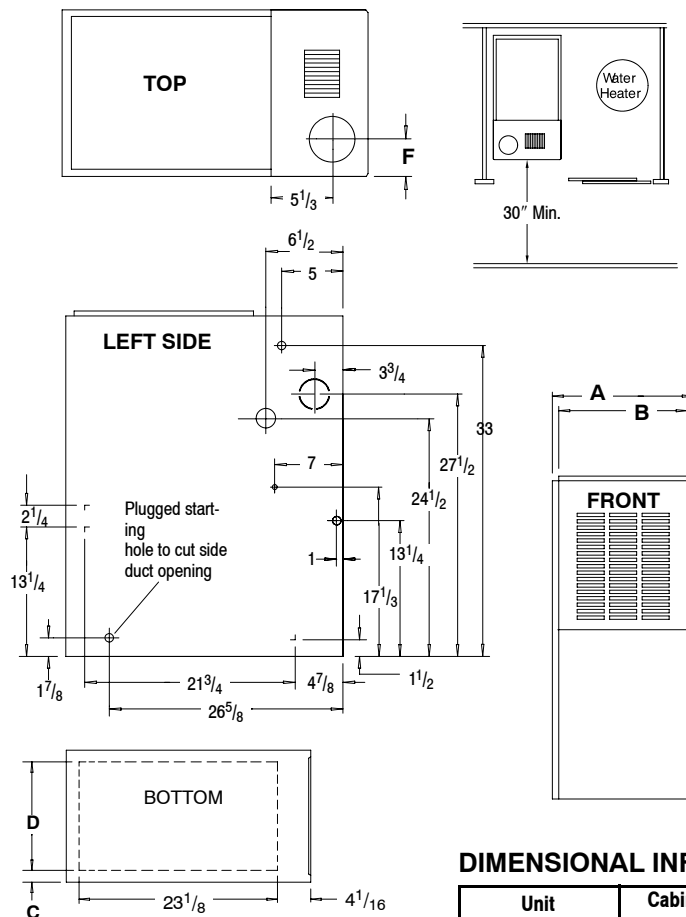
- NOTE: (1) Data based on Bottom Only or One Side return.  
 (2) Data based on Both Sides or Bottom plus One Side  
 (3) 075F16 Reduce airflow by 5% if Bottom Only return.  
 (4) 100F20 Reduce airflow by 10% if Bottom Only return.  
 (5) 125J20 Reduce airflow by 5% if Bottom Only return.  
 (6) Gray area is above maximum temperature rise range.

MAX CFM's	
Filter Size	CFM
14" X 25"	1400
16" X 25"	1600
20" X 25"	2000
24" X 25"	2500
Max CFM based on 600 FPM	

CFM - Cubic Feet per Minute airflow.

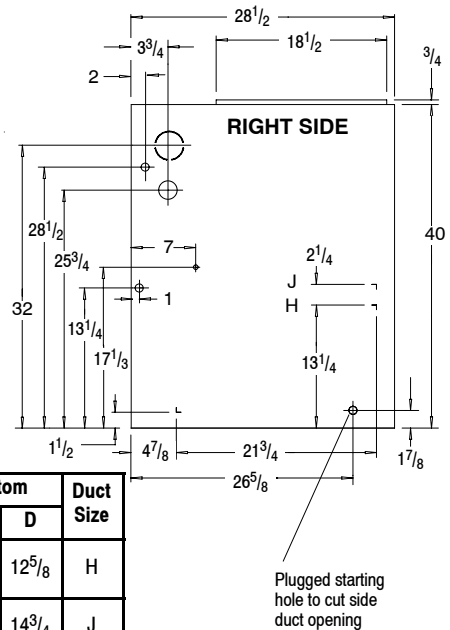
Filter required for each return-air inlet. Airflow performance includes 1" washable (600 FPM max) filter media.

# UNIT DIMENSIONS



MINIMUM CLEARANCES TO COMBUSTIBLE MATERIALS FOR ALL UNITS	
REAR	0
FRONT	3"
Recommended For Service	30"
ALL SIDES OF SUPPLY PLENUM	1"
SIDES	0
VENT	
Single Wall Vent	6"
Type B-1 Double Wall Vent	1"
TOP OF FURNACE	1"

Horizontal position: Line contact is permissible only between lines formed by intersections of top and two sides of furnace jacket, and building joists, studs or framing.



## DIMENSIONAL INFORMATION

Unit Capacity	Cabinet		Top	Bottom		Duct Size
	A	B	F	C	D	
*8MPL050B12 *8MPL075B12	15 1/2	14	6	1 3/8	12 5/8	H
*8MPL075F16 *8MPL100F20	19 1/8	17 5/8	7 3/4	2 1/8	14 3/4	J
*8MPL100J22 *8MPL125J20	22 3/4	21 1/4	9 1/2	1 15/16	18 3/4	J

**NOTE:** Evaporator "A" coil drain pan dimensions may vary from furnace duct opening size. Always consult evaporator specifications for duct size requirements.

Unit is designed for bottom return or side return. Return air through back of unit is NOT allowed.

**ALL DIMENSIONS IN INCHES**  
1 in = 25.4 mm

Drawing is representative some models may vary in appearance.

## MODEL NUMBER IDENTIFICATION GUIDE

<b>*</b>	<b>8</b>	<b>M P</b>	<b>L</b>	<b>0 7 5</b>	<b>B</b>	<b>1 2</b>	<b>B</b>	<b>#</b>
<b>Brand</b>								<b>Engineering Rev.</b> Denotes minor change
<b>Brand Efficiency</b> 8 = Non-Condensing, 80+% Gas Furnace 9 = Condensing, 90+% Gas Furnace								<b>Marketing Digit</b> Denotes major change
<b>Installation Configuration</b> UP = Upflow                      DN = Downflow UH = Upflow/Horizontal        HZ = Horizontal DH = Downflow/Horizontal MP = Multiposition, Upflow/Downflow/Horizontal								<b>Cooling Airflow</b> 08 = 800 CFM      16 = 1600 CFM 12 = 1200 CFM     20 = 2000 CFM 14 = 1400 CFM     22 = 2200 CFM
<b>Major Design Feature</b> 1 = One (Single) Pipe            N = Single Stage 2 = Two Pipe                        P = PVC Vent D = 1 or 2 Pipe                    T = Two Stage L = Low NOx                        V = Variable Speed								<b>Cabinet Width</b> B = 15.5" Wide      J = 22.8" Wide F = 19.1" Wide      L = 24.5" Wide
								<b>Input (Nominal MBTUH)</b>

\* Denotes Brand

International Comfort Products, LLC  
Lewisburg, TN 37091 U.S.A.  
www.GoDayandNight.com

Specifications subject to change without notice