

## THREE PHASE 50 Hz Operation



### CONVERTIBLE SINGLE PACKAGE AIR CONDITIONER

#### 400v- 3- 50 Hz For Export Use

- Combination heating and electric cooling, self-contained for year-round comfort. Systems install on rooftop or at ground level. Units are shipped complete in one carton; with only the electric heat requiring mounting at time of installation.

#### CONSTRUCTION

- Triple-coated steel, consisting of a Polyester top coat, a urethane primer coat preceded by an oxide pretreatment. One piece weather resistant top. Access panels for easy service. Side by side supply and return. Heavy 16 gauge base with rails.
- Coil Guard to protect condenser coil.

#### ACCESS PANELS

- Located to provide easy serviceability. The controls are behind the same exterior panel.

#### CONVERTIBLE DISCHARGE

- Units have side-by-side supply and return air openings for either horizontal or downflow applications. Simply relocate duct cover panels.

#### COMPRESSOR

- The high efficiency compressor has external rubber mounts to help minimize system noise and features an automatic reset current / temperature sensing overload protection system. 3 and 4 ton use reciprocating compressors, 5 ton uses a scroll.

#### COILS

- Both the condenser and evaporator coils have aluminum fins and copper tubes to promote efficient heat transfer. The refrigerant circuit is sealed, tested, and fully charged at the factory.

#### EXTERNALLY-MOUNTED GAUGE PORTS

- Provides easier servicing and allows for more accurate reading of operating conditions.

#### EVAPORATOR BLOWER

- All model sizes are equipped with multiple speed direct drive blower motors to provide proper air flow for both heating and cooling requirements.

#### AIR FILTERS

- Air filters are supplied with these units.

#### Electric Heat

- 10 to 20 kw

#### Transformer

- 65VA
- Resettable circuit breaker.

#### Economizer

- Factory wired to accept economizer.

## UNIT SPECIFICATIONS

MODEL * NUMBER	Electrical Data			Condenser Data								BELS
				Coil			Fan Motor		Fan			
	Voltage Phase - Hz	HACR Breaker / Max. Fuse	Ampacity	Total Face Area (Sq. Ft.)	Fins Per In. / Rows	Tube Diameter (In.)	HP	Full Load Amps	Size Diameter (In.)	Number Blades / Pitch°	CFM (Max.)	
PAF036L000	400-3-50	15 amps.	10	11.38	20 / 1	3/8	1/3	.74	20.3	3 / 27	2800	7.8
PAF048L000	400-3-50	15 amps.	10.4	10.5	20 / 2	3/8	1/3	.74	20.3	3 / 27	3000	7.8
PAF060L000	400-3-50	20 amps.	13.7	14.9	20 / 2	3/8	1/3	.74	20.3	4 / 25	3300	8.0

MODEL NUMBER	Evaporator Coil								Compressor			Factory Refrigerant Charge R-22 (Oz.)	Ship Weight ( Lbs. )
	Coil			Blower H.P. / Type / Speeds	Motor	Blower			Type	Rated Load Amps	Locked Rotor Amps		
	Total Face Area (Sq. Ft.)	Fins Per In. / Rows	Tube Diam. (In.)		Full Load Amps	Type & Size	RPM (Max)	CFM Rated					
PAF036L000	3.67	14 / 3	3/8	1/2 / PSC / 3	2.0	DD10-8A	1100	1250	Recip	5.8	42	87	320
PAF048L000	5.33	14 / 3	3/8	1 / PSC / 3	2.1	DD11-11A	1100	1600	Recip	6.1	42	102	375
PAF060L000	5.33	14 / 4	3/8	1 / PSC / 3	2.1	DD11-11A	1100	2000	Scroll	8.7	59.6	136	380

Air Filters - 3 ton use 12 x 25 x 1 (2 ea), 4 & 5 ton use 14 x 25 x 1 (2 ea).

## PERFORMANCE DATA: COOLING

MODEL NUMBER	Rated Capacity <sup>1</sup> BTUH	S / T Ratio	Power Input Watts	Evaporator Rated Airflow (SCFM)	Ext. Static <sup>2</sup> Pressure Drop Wet
PAF036	32,000	.75	4471	1340	0.2
PAF048	38,000	.79	5000	1655	0.2
PAF060	48,000	.75	6629	1993	0.2

<sup>1</sup> Rated Capacity predicted in accordance with ARI standard conditions, 95° Amb, 80° DB/67° WB, 400 Volts.

<sup>2</sup> Includes a .08 drop for a filter

<sup>3</sup> For reference only

## BLOWER PERFORMANCE DATA IN HORIZONTAL CONFIGURATION

UNIT SIZE	Motor Speed	Air Delivery in CFM at ESP (in. W.C.)			
		0.20	0.30	0.40	0.50
3 Ton	HI	1340	1278	1216	1152
	MED	1153	1105	1059	1011
	LO	903	877	853	N/A
4 Ton	HI	2172	2137	2033	1962
	MED	1655	1648	1617	1566
	LO	1328	1330	1317	1297
5 Ton	HI	2034	1968	1867	1807
	MD HI	1993	1927	1849	1771
	MD LO	1877	1823	1756	1674
	LO	2178	1757	1705	1622

Blower Performance is for Horizontal Configuration without Accessories.

Air delivery against shown external static pressures taken with 400V to unit and dry coil. For wet coil subtract approximately 25 CFM. Add .08 static for internal filters.

\*\* Applied to the ACTUAL capacity rating

## ELECTRICAL DATA: ELECTRIC HEAT ACCESSORY

HEATER MODEL	Used With	Supply Voltage	Nominal Heating BTUH	Supply Circuit No.	Heater Amps	Minimum Circuit Ampacity	Maximum Overcurrent Protective Device (Amps)
AAH10FBLAA	3 - 5 Ton	480-3-50	32,765	L4-L5-L6	11.5	14.4	15
AAH15FBLAA	3 - 5 Ton	480-3-50	49,147	L4-L5-L6	17.3	21.7	25
AAH20FBLAA	3 - 5 Ton	480-3-50	65,530	L4-L5-L6	23.1	28.9	30



## ACCESSORIES

### ROOF CURBS, TRANSITION AND DUCT KITS

Used on (Unit Size)	8" Curb	14" Curb	24" Curb	Square to Round Transition Kit	Round Duct Size (Inches)	Concentric Grill Flush Mount	Concentric Grill Step Down
3 Ton	ACL01FB0A *	ACM01FB0A *	ACH01FB0A *	ACT01FB0A	16	AXB020CFA	AXB020CSA
	AXB020CLA **	AXB020CMA **	AXB020CHA **	AXB020CTA	16	AXB020CFA	AXB020CSA
4 - 5 Ton	ACL01FB0A *	ACM01FB0A *	ACH01FB0A *	ACT11FB0A	18	AXB030CFA	AXB030CSA
	AXB020CLA **	AXB020CMA **	AXB020CHA **	ACT22FB0A	18	AXB030CFA	AXB030CSA

### ROOF CURB DIMENSIONS (AC SERIES)

Model No.	A	B	C	D	E	F	G	H	K (ACL)	K (ACM)	K (ACH)
AC(L,M,H)01FB0A	42-1/2	39-1/2	16	21-1/2	2	45-3/4	42-3/4	20	8	14	24

### ROOF CURB DIMENSIONS (AX SERIES)

Model No.	A	B	C	D	E	F	G	H	K (CLA)	K (CMA)	K (CHA)
AXB020C(L,M,H)A**	42-3/4	39-3/4	18	18	3-3/4	42-3/4	39-3/4	18	8	14	24

\* Full Perimeter Curbs

\*\* AXB curbs are not full perimeter curbs. 3 ton units will have a 3 inch overhang on the control access panel end of the unit. There will be some supply air blockage but, this does not affect the performance of the unit.

### ECONOMIZERS

Description	Mainline Model Number	Used on
Fully Modulating Horizontal	AHE01FB0A	3 Ton
Fully Modulating Horizontal	AHE02FB0A	4 to 5 Ton
Fully Modulating Downflow	AEM01FB0A	3 Ton
Fully Modulating Downflow	AEM03FB0A	4 Ton
3 Position Horizontal	AHP01FB0A	3 Ton
3 Position Horizontal	AHP02FB0A	4 to 5 Ton
3 Position Downflow	AEP01FB0A	3 Ton
3 Position Downflow	AEP03FB0A	4 Ton

### FRESH AIR DAMPERS

Description	Mainline Model Number	Used on
35% Manual Fresh Air Damper	AFA01FB0A	3 Ton
35% Manual Fresh Air Damper	AFA02FB0A	4 to 5 Ton
35% Motorized Fresh Air Damper	AFM01FB0A	3 Ton
35% Motorized Fresh Air Damper	AFM02FB0A	4 to 5 Ton

### RETURN AIR FILTER KIT

Description	Mainline Model Number	Used on
Return Air Filter Kit *	AKF12FB0A	ALL

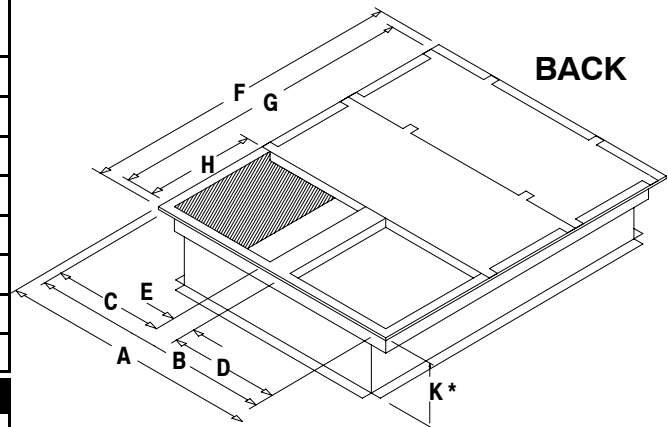
Filters not included in kit, small chassis uses 12 x 25 x 1 (2 ea), large chassis uses 14 x 25 x 1 (2 ea)

### HAIL GUARD

Description	Mainline Model Number	Used on
Hail Guard	AGH01FB0A	3 Ton
	AGH02FB0A	4 to 5 Ton

### ACCESSORIES: LOW AMBIENT CONTROL

Model Number	Kit Number	Used on
ALA12CU0A	1085493	ALL



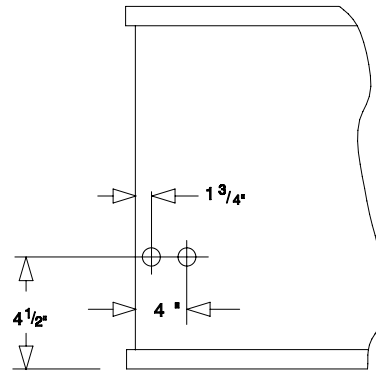
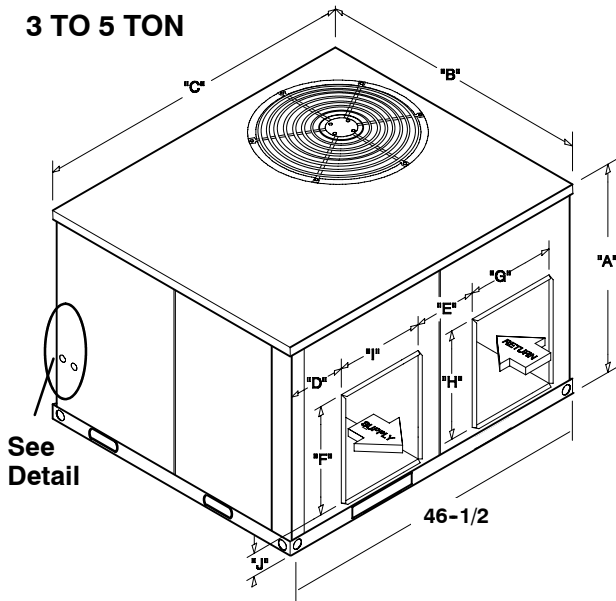
**Curb Dimensions**

Roof Curbs available in 8", 14" and 24" Heights (K Dimensions)

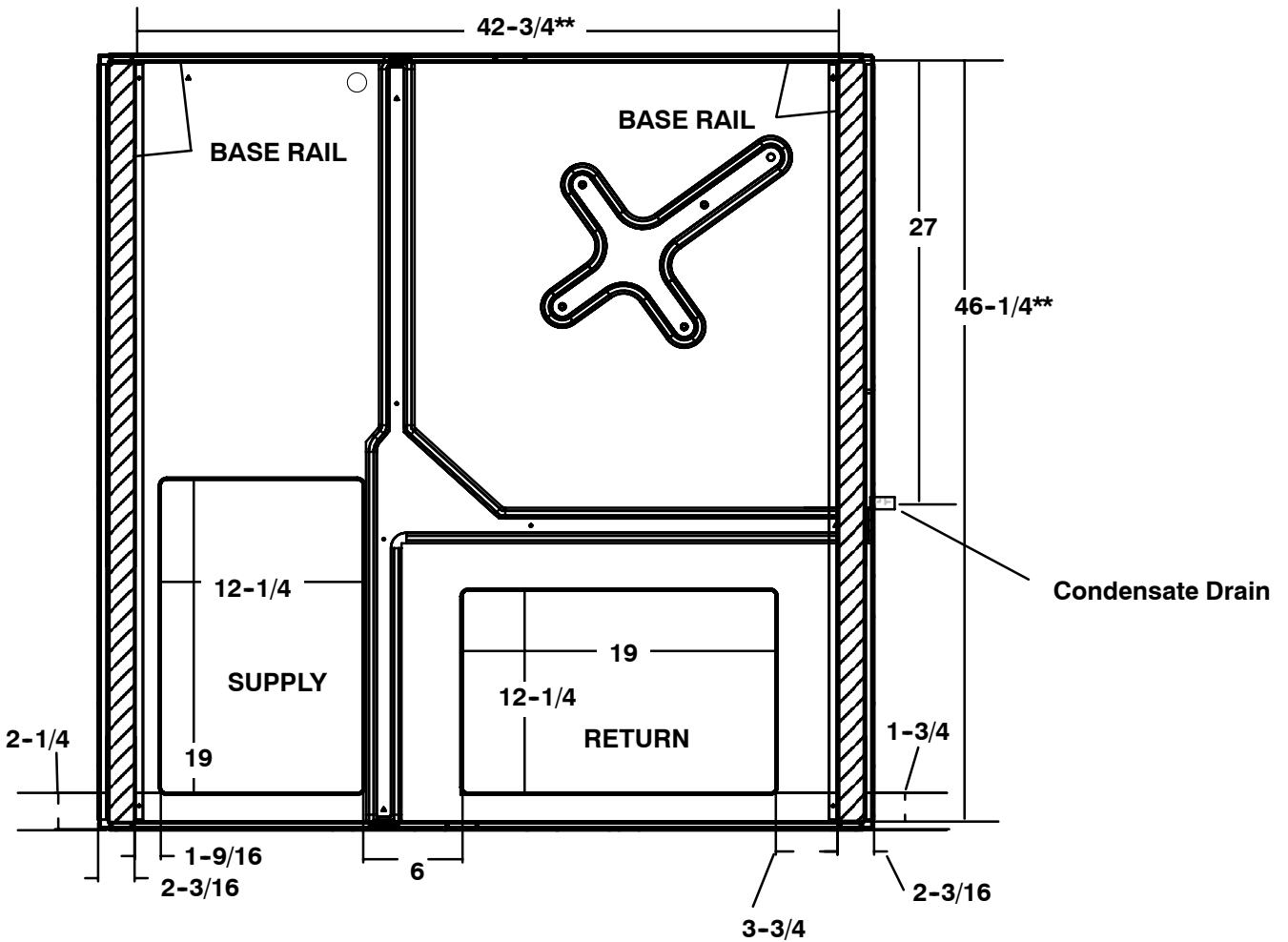
**UNIT DIMENSIONS**

**3 TO 5 TON**

**All Dimensions In Inches**



**BASE PAN - CHASSIS**



UNIT SIZE	A	B	C	D	E	F	G	H	I	J
3 Ton	29-1/2	47-1/2	47-1/2	3	9-1/2	12	14	12	14	4-1/2
4 TO 5 Ton	37-1/2	47-1/2	47-1/2	4	6-1/2	19	19	12	12	4-1/2

**\*\* Measured from inside to inside on base rails.**

## MODEL NUMBER IDENTIFICATION GUIDE

MODEL NUMBER	P	A	F	036	L	000	
P = Single Package						ELECTRICAL CHARACTERISTICS	
Air Conditioner						L = 460V - 3 ph - 60 Hz / 400V-3 ph-50 Hz	
F = STANDARD SERIES						COOLING CAPACITY (NOMINAL BTUH)	
						36 = 3 ton	
						48 = 4 Ton    60 = 5 Ton	

## GUIDE SPECIFICATION

### CABINET

The cabinet is made of triple-coated steel, consisting of a Polyester top coat, a urethane primer coat preceded by an oxide pretreatment. One piece weather resistant top. The base rails are 16 gauge steel with fork lift slots and holes provided for lifting shackles. The unit is designed with convertible airflow for either horizontal or downflow applications with conversion accomplished by re-locating two panels. Indoor blower compartment interior cabinet surfaces are insulated with a minimum 1/2" thick, flexible glass insulation, coated on the air side.

### COOLING SECTION

The unit is factory charged and operationally ready upon delivery. The unit refrigerant circuit has a high efficiency fully reciprocating compressor (5 ton has scroll compressor) with internal overload protection, and copper tube / aluminum fin evaporator and condenser coils. The unit is designed for cooling operation to 40° F and will be capable of being wired for field installed economizer type accessories.

### COILS

The evaporator and condenser coils are fabricated with aluminum fins mechanically bonded to copper tubing. Both coils are pressure tested prior to assembly into the unit and electronically leak tested after assembly into the unit.

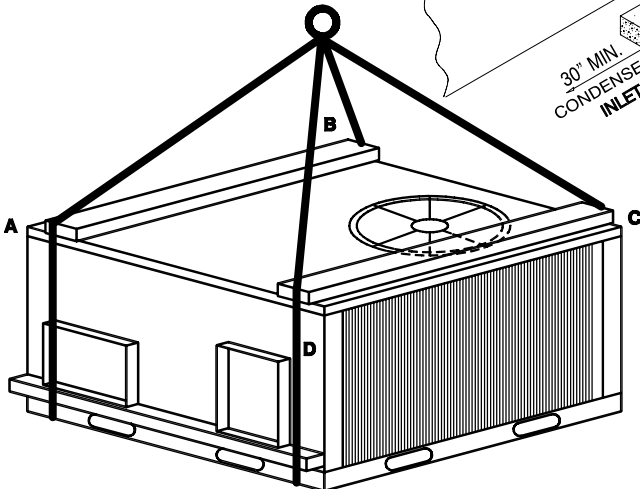
### CONDENSER FAN

The unit has a single direct-drive propeller-fan / motor assembly. The assembly is mounted directly to a vertical-discharge grille that is easily removed for service. Motors are 916 RPM with sleeve or ball bearings and internal overload protection.

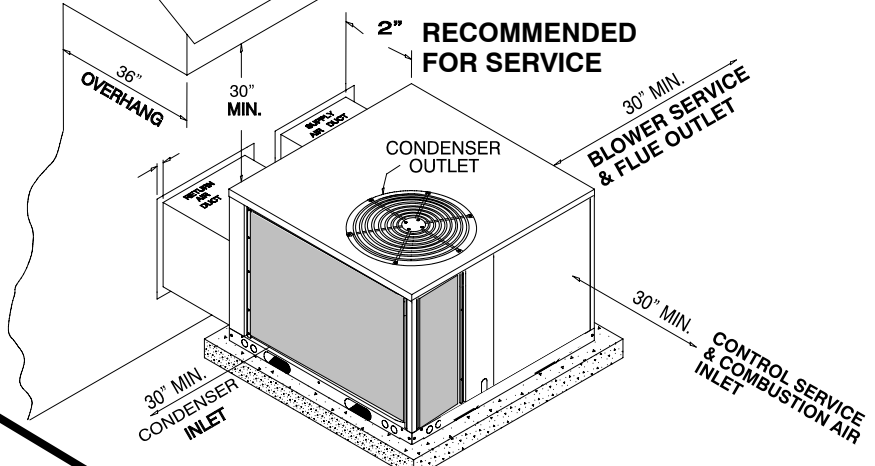
### EVAPORATOR BLOWER

All units have a direct-drive evaporator blower motor as a standard. The direct-drive evaporator blower motor has sleeve bearings and internal overload protection.

### RIGGING DETAILS



### INSTALLATION CLEARANCES



### CORNER WEIGHTS (LBS)

UNIT SIZE	A	B	C	D	OPERATING WEIGHT TOTAL
3 TON	72	90	126	72	360
4 TON	98	123	171	98	490
5 TON	100	125	175	100	500