

## PACKAGE AIR CONDITIONERS

<p><b>2 - 5 TONS</b></p> <p><b>PAR5</b> - ENERGY STAR® - Up to 16.0 SEER, Up to 12.5 IEEER - 2 stage scroll compressor - High-efficiency ECM blower motor - Accessory filter racks support 2" filters - Hail guard tight-wire grille - 208/230 volts single and 3 phase</p>	<p><b>2.5 - 5 TONS</b></p> <p><b>PAD4</b> - Up to 14.0 SEER, 11.5 IEEER - Convertible airflow design - Scroll compressor - High-efficiency ECM blower motor - Accessory filter racks support 2" filters - 208/230 volts single and 3 phase, 460 volts</p>	<p><b>3 - 5 TONS</b></p> <p><b>RAV</b> - 14.0 SEER - Up to 11.8 IEEER - Patented X-Vane Fan™ Technology - Std, med and high static fan motor options - Factory installed economizer option - Convertible airflow design - Scroll compressor - Single-stage cooling - 208/230 volts single and 3 phase, 460 and 575 volts</p>	<p><b>6 TONS</b></p> <p><b>RAV072</b> - 11.2 IEEER, 15.2 IEEER - Patented X-Vane Fan™ Technology - Std, med and high static fan motor options - Factory installed economizer option - Convertible airflow design - Scroll compressor - 2 stage cooling - 208/230 volts single and 3 phase, 460 and 575 volts</p>	<p><b>3 - 5 TONS</b></p> <p><b>RAW</b> - 16.0 SEER, 12.2 IEEER - Patented X-Vane Fan™ Technology - Std, med and high static fan motor options - Factory installed economizer option - Convertible airflow design - Scroll compressor - 2 stage cooling - 208/230 volts single and 3 phase, 460 or 575 volts</p>	<p><b>6 TONS</b></p> <p><b>RAH072</b> - ENERGY STAR - 13.2 IEEER, 12.2 IEEER - Single-stage cooling - Std, med and high static fan motor options - Factory installed economizer option - Convertible airflow design - Scroll compressor - 208/230, 460 or 575 volts</p>
<p><b>6 - 12.5 TONS</b></p> <p><b>RAH073, RAH090, RAH102, RAH120, RAH150</b> - ENERGY STAR - 11.7 - 12.4 IEEER, Up to 16.2 IEEER with VFD - 2 stage cooling - Std, med and high static fan motor options - Factory installed economizer option - Convertible airflow design - Dual scroll compressors - 208/230 volts 3 phase only, 460 or 575 volts</p>	<p><b>7.5 - 15 TONS</b></p> <p><b>RAS090, RAS102, RAS120, RAS150, RAS180</b> - Up to 11.3 IEEER, Up to 12.6 IEEER - Std, med and high static fan motor options - Factory installed economizer option - Convertible airflow design - Dual scroll compressors - 208/230 volts 3 phase only, 460 or 575 volts</p>	<p><b>7.5 - 10 TONS</b></p> <p><b>RAS089, RAS100, RAS119</b> - 11.2 IEEER, 12.9 IEEER - 2 stage/single circuit cooling capacity - Std, med and high static fan motor options - Factory installed economizer option - Convertible airflow design - 208/230 volts 3 phase only, 460 or 575 volts</p>			
<p><b>15, 17.5, 20, 25 TONS</b></p> <p><b>RAH181, RAH210, RAH240, RAH300</b> - ENERGY STAR - 11.4 - 12.2 IEEER, Up to 13.8 IEEER - Dedicated vertical airflow - Std, med and high static fan motor options - Factory installed economizer option - Scroll compressors - 2 stage cooling with independent circuits and controls - 208/230 volts 3 phase only, 460 or 575 volts</p>	<p><b>15, 17.5, 20, 25 TONS</b></p> <p><b>RAH183, RAH213, RAH243, RAH303</b> - ENERGY STAR - 10.9 - 11.8 IEEER, Up to 13.5 IEEER - Dedicated horizontal airflow - Std, med and high static fan motor options - Factory installed economizer option - Scroll compressors - 2 stage cooling with independent circuits and controls - 208/230 volts 3 phase only, 460 or 575 volts</p>	<p><b>17.5, 20, 25 TONS</b></p> <p><b>RAS210, RAS240, RAS300, RAS336</b> - 10.0 - 11.0 IEEER, Up to 12.9 IEEER - Dedicated vertical airflow - Std, med and high static fan motor options - Factory installed economizer option - Scroll compressors - 2 stage cooling with independent circuits and controls - 208/230 volts 3 phase only, 460 or 575 volts</p>	<p><b>15, 17.5, 20, 25 TONS</b></p> <p><b>RAS213, RAS243, RAS303, RAS333</b> - 10.0 - 11.0 IEEER - Dedicated horizontal airflow - Std, med and high static fan motor options - Factory installed economizer option - Scroll compressors - 2 stage cooling with independent circuits and controls - 208/230 volts 3 phase only, 460 or 575 volts</p>		

## PACKAGE DUAL FUEL

**2 - 5 TONS**

**PDS4, PDD4**  
- Up to 14.0 SEER  
- 11.5 - 12.0 IEEER and 8.0 HSPF  
- Dual Fuel - gas heat and electric heat pump  
- Scroll compressor  
- Convertible airflow design  
- Stainless steel tubular heat exchanger (PDS4)  
- Aluminized steel tubular heat exchanger (PDD4)  
- Direct spark ignition  
- High-efficiency ECM blower motor  
- Accessory filter racks support 2" filters  
- 208/230 volts single and 3 phase

## COMMERCIAL AIR HANDLERS

<p><b>6 - 30 TONS</b></p> <p><b>FAS072, FAS091, FAS120, FAS150, FAS180, FAS240, FAS300, FAS336</b> - AC fan coil - TXV standard - 4 row coil - Std, med and high static fan motor options - Painted or unpainted cabinet - Multi-position - 5 - 70 kW electric heat - 208/230/460 or 575 volts</p>	<p><b>6 - 20 TONS</b></p> <p><b>FHS072, FHS091, FHS120, FHS180, FHS240</b> - HP fan coil - TXV standard - 4 row coil - Std, med and high static fan motor options - Painted or unpainted cabinet - Multi-position - 5 - 70 kW electric heat - 208/230/460 or 575 volts</p>
------------------------------------------------------------------------------------------------------------------------------------------------------------------------------------------------------------------------------------------------------------------------------------------------------------------------------------	------------------------------------------------------------------------------------------------------------------------------------------------------------------------------------------------------------------------------------------------------------------------------------------------------------

## CASED COILS

**7.5 & 10 TONS**

**CAHZ (Horizontal) CAVT (Vertical)**  
- R-410A  
- R-22  
- Direct-expansion evaporator coils  
- TXV  
- 3/8" coil tubing  
- Shipped with nitrogen holding charge

## PACKAGE GAS/ELECTRICS

<p><b>2 - 5 TONS</b></p> <p><b>PGR5</b> - ENERGY STAR - Up to 16.0 SEER, Up to 12.5 IEEER - 2 stage scroll compressor - 2 stage gas heat - Stainless steel tubular heat exchanger - High-efficiency ECM blower motor - Accessory filter racks support 2" filters - Hail guard tight-wire grille - 208/230 volts single and 3 phase</p>	<p><b>2.5 - 5 TONS</b></p> <p><b>PGS4, PGD4</b> - Up to 14.0 SEER, 11.5 IEEER - Scroll compressor - Convertible airflow design - Stainless steel tubular heat exchanger (PGS4) - Aluminized steel tubular heat exchanger (PGD4) - Direct spark ignition - High-efficiency ECM blower motor - Accessory filter racks support 2" filters - 208/230 volts single- and 3 phase, 460 volts</p>	<p><b>3 - 5 TONS</b></p> <p><b>RGV</b> - 14.0 SEER - Up to 11.6 IEEER - Std, med and high static fan motor options - Factory installed economizer option - Convertible airflow design - Scroll compressor - 208/230 volts single and 3 phase, 460 and 575 volts</p>	<p><b>6 TONS</b></p> <p><b>RGV072</b> - 11.0 IEEER, 15.0 IEEER - Patented X-Vane Fan™ Technology - Std, med and high static fan motor options - Factory installed economizer option - Convertible airflow design - Scroll compressor - 208/230 volts single and 3 phase, 460 and 575 volts</p>	<p><b>3 - 5 TONS</b></p> <p><b>RGW</b> - 16.0 SEER, up to 12.5 IEEER - Patented X-Vane Fan™ Technology - 2 stage gas heat - Std, med and high static fan motor options - Factory installed economizer option - Convertible airflow design - Scroll compressor - 208/230 volts single and 3 phase, 460 and 575 volts</p>	<p><b>6 TONS</b></p> <p><b>RGH072</b> - ENERGY STAR - 13.0 IEEER, 12.0 IEEER - Single-stage cooling - Std, med and high static fan motor options - Three heat options (low, medium, high) - Factory installed economizer option - Convertible airflow design - Tubular heat exchanger - 2 stage gas heat - 208/230, 460 or 575 volts</p>
<p><b>6 - 12.5 TONS</b></p> <p><b>RGH073, RGH090, RGH102, RGH120, RGH150</b> - ENERGY STAR - 11.5 - 12.2 IEEER, Up to 16.0 IEEER - 2 stage cooling - Std, med and high static fan motor options - Three heat options (low, medium, high) - Factory installed economizer option - Convertible airflow design - Tubular heat exchanger - 2 stage gas heat - Dual scroll compressors - 208/230 volts 3 phase only, 460 or 575 volts</p>	<p><b>7.5 - 15 TONS</b></p> <p><b>RGS090, RGS102, RGS120, RGS150, RGS180</b> - 10.8-11.1 IEEER, Up to 12.8 IEEER - Std, med and high static fan motor options - Three heat options (low, medium, high) - Factory installed economizer option - Convertible airflow design - Tubular heat exchanger - 2 stage gas heat - Dual scroll compressors - 208/230 volts 3 phase only, 460 or 575 volts</p>	<p><b>7.5 - 10 TONS</b></p> <p><b>RGS089, RGS100, RGS119</b> - 11.0 IEEER, 12.7 IEEER - 2 stage/single circuit cooling capacity - Std, med and high static fan motor options - Three heat options (low, medium, high) - Factory installed economizer option - Convertible airflow design - Tubular heat exchanger - 2 stage gas heat - 208/230 volts 3 phase only, 460 or 575 volts</p>			
<p><b>15, 17.5, 20, 25 TONS</b></p> <p><b>RGH181, RGH210, RGH240, RGH300</b> - ENERGY STAR - 11.2 - 12.0 IEEER, Up to 13.8 IEEER - 81% AFUE - Dedicated vertical airflow - Tubular heat exchanger - Std, med and high static fan motor options - Three heat options (low, medium, high) - Factory installed economizer option - Scroll compressors - 2 stage cooling with independent circuits and controls - 208/230 volts 3 phase only, 460 or 575 volts</p>	<p><b>15, 17.5, 20, 25 TONS</b></p> <p><b>RGH183, RGH213, RGH243, RGH303</b> - ENERGY STAR - 10.5 - 11.5 IEEER, Up to 13.2 IEEER - 81% AFUE - Dedicated horizontal airflow - Tubular heat exchanger - Std, med and high static fan motor options - Three heat options (low, medium, high) - Factory installed economizer option - Scroll compressors - 2 stage cooling with independent circuits and controls - 208/230 volts 3 phase only, 460 or 575 volts</p>	<p><b>15, 17.5, 20, 25 TONS</b></p> <p><b>RGS210, RGS240, RGS300, RGS336</b> - 9.8 - 10.8 IEEER, Up to 12.7 IEEER - 80 - 81% AFUE - Dedicated vertical airflow - Tubular heat exchanger - Std, med and high static fan motor options - Three heat options (low, medium, high) - Factory installed economizer option - Scroll compressors - 2 stage cooling with independent circuits and controls - 208/230 volts 3 phase only, 460 or 575 volts</p>	<p><b>15, 17.5, 20, 25 TONS</b></p> <p><b>RGS213, RGS243, RGS303, RGS333</b> - 9.8 - 10.8 IEEER - 80 - 81% AFUE - Dedicated horizontal airflow - Tubular heat exchanger - Std, med and high static fan motor options - Three heat options (low, medium, high) - Factory installed economizer option - Scroll compressors - 2 stage cooling with independent circuits and controls - 208/230 volts 3 phase only, 460 or 575 volts</p>		

## SPLIT HEAT PUMPS

<p><b>3 - 5 TONS</b></p> <p><b>NH4H4</b> - Horizontal discharge with narrow footprint - 14.0-15.0 SEER depending on indoor combination*** - Scroll compressor - 208/230 volts single* and 3 phase, 460 volts</p>	<p><b>NXH6</b> - Minimum 15.4 SEER, 8.2 HSPF - Hail guard tight-wire grille - Scroll compressor - 208/230 volts 3 phase</p>	<p><b>N4H4</b> - 14.0 SEER - Scroll compressor - 208/230 volts single* and 3 phase, 460 volts</p>	<p><b>6 - 20 TONS</b></p> <p><b>CHS072, CHS091, CHS121, CHS180, CHS240</b> - Up to 11.0 IEEER - Scroll compressor - Single refrigerant circuit on CHS072, CHS091, CHS121 - Comfort Alert® diagnostics - Dual refrigerant circuit on CHS180, CHS240 models - Low-ambient control option (-20°F) - 208/230 volts 3 phase only, 460 or 575 volts</p>
----------------------------------------------------------------------------------------------------------------------------------------------------------------------------------------------------------------------------------	---------------------------------------------------------------------------------------------------------------------------------------------	---------------------------------------------------------------------------------------------------------------	-------------------------------------------------------------------------------------------------------------------------------------------------------------------------------------------------------------------------------------------------------------------------------------------------------------------------------------------------------------------------------

## PACKAGE HEAT PUMPS

<p><b>2 - 5 TONS</b></p> <p><b>PHR5</b> - ENERGY STAR - Up to 15.5 SEER, 12.5 IEEER - 2 stage scroll compressor - High-efficiency ECM blower motor - Accessory filter racks support 2" filters - Hail guard tight-wire grille - 208/230 volts single and 3 phase</p>	<p><b>2.5 - 5 TONS</b></p> <p><b>PHD4</b> - Up to 14.0 SEER - 12.0 IEEER and 8.0 HSPF - Scroll compressor - Convertible airflow design - High-efficiency ECM blower motor - Accessory filter racks support 2" filters - 208/230 volts single and 3 phase, 460 volts</p>	<p><b>3 - 5 TONS</b></p> <p><b>RHV</b> - 14.3 SEER, 11.8 IEEER - Patented X-Vane Fan™ Technology - Scroll compressor - Single-stage cooling - Std, med and high static fan motor options - Factory installed economizer option - Convertible airflow design - 208/230, 460 or 575 volts</p>	<p><b>6 TONS</b></p> <p><b>RHV072</b> - 15.0 IEEER, 11.2 IEEER - Patented X-Vane Fan™ Technology - 2 stage cooling - 2 stage scroll compressor - Std, med and high static fan motor options - Factory installed economizer option - Convertible airflow design - 208/230, 460 or 575 volts, single and 3 phase</p>	<p><b>3 - 5 TONS</b></p> <p><b>RHW</b> - 16.2 SEER, up to 12.5 IEEER &amp; 8.3 HSPF - Patented X-Vane Fan™ Technology - 2 stage cooling - 2 stage scroll compressor - Std, med and high static fan motor options - Factory installed economizer option - Convertible airflow design - 208/230, 460 or 575 volts, single and 3 phase</p>	<p><b>6 TONS</b></p> <p><b>RHH072</b> - 12.8 IEEER, 12.0 IEEER - Single-stage cooling - Std, med and high static fan motor options - Factory installed economizer option - Convertible airflow design - Scroll compressor - 208/230, 460 or 575 volts</p>
<p><b>6 - 10 TONS</b></p> <p><b>RHH073, RHH090, RHH102, RHH120</b> - ENERGY STAR - Up to 12.3 IEEER, 12.9 - 15.6 IEEER - 2 stage cooling - Std, med and high static fan motor options - Factory installed economizer option - Convertible airflow design - Dual scroll compressors - 208/230 volts 3 phase only, 460 or 575 volts</p>	<p><b>7.5 - 8.5 TONS</b></p> <p><b>RHS090, RHS102</b> - 11.2 IEEER, 12.5 IEEER - Std, med and high static fan motor options - Factory installed economizer option - Convertible airflow design - Dual scroll compressors - 208/230 volts 3 phase only, 460 or 575 volts</p>	<p><b>10 - 12.5 TONS</b></p> <p><b>RHS120, RHS150</b> - 10.6 - 11.0 IEEER, 12.0 - 12.5 IEEER - Std, med and high static fan motor options - Factory installed economizer option - Convertible airflow design - Dual scroll compressors - 208/230 volts 3 phase only, 460 or 575 volts</p>	<p><b>15 &amp; 20 TONS</b></p> <p><b>RHS181, RHS240</b> - 10.6 - 11.0 IEEER, 12.0 IEEER - Dedicated vertical airflow - Std, med and high static fan motor options - Factory installed economizer option - Scroll compressors - 2 stage cooling with independent circuits and controls - 208/230 volts 3 phase only, 460 or 575 volts</p>	<p><b>15 &amp; 20 TONS</b></p> <p><b>RHS183, RHS243</b> - 10.6 - 10.8 IEEER - Dedicated horizontal airflow - Std, med and high static fan motor options - Factory installed economizer option - Scroll compressors - 2 stage cooling with independent circuits and controls - 208/230 volts 3 phase only, 460 or 575 volts</p>	

## SPLIT CONDENSING UNITS

<p><b>3 - 5 TONS</b></p> <p><b>NH4A4</b> - Horizontal discharge with narrow footprint - 14.0-15.0 SEER depending on indoor combination*** - Scroll compressor - 208/230 volts single* and 3 phase, 460 volts</p>	<p><b>2.5 - 5 TONS</b></p> <p><b>N4A3</b> - 13.0 SEER - Scroll compressor - 208/230 volts single* and 3 phase, 460 or 575 volts</p>		
<p><b>6 TONS</b></p> <p><b>CAS072</b> - 11.5 IEEER - Scroll compressor - Comfort Alert® diagnostics - Low-ambient control option (-20°F) - 208/230 volts 3 phase only, 460 or 575 volts</p>	<p><b>7.5 - 12.5 TONS</b></p> <p><b>CAS091, CAS121, CAS151</b> - Up to 11.2 IEEER - Scroll compressor - Single refrigerant circuit - Comfort Alert® diagnostics - Low-ambient control option (-20°F) - 208/230 volts 3 phase only, 460 or 575 volts</p>	<p><b>10 - 12.5 TONS</b></p> <p><b>CAS120, CAS150</b> - 11.2 IEEER - Dual scroll compressors - Comfort Alert® diagnostics - Low-ambient control option (-20°F) - 208/230 volts 3 phase only, 460 or 575 volts</p>	<p><b>15 &amp; 20 TONS</b></p> <p><b>CAS180, CAS181, CAS240, CAS241</b> - 11.0 IEEER - Scroll compressor - Single or dual refrigerant circuit - Comfort Alert® diagnostics - Low-ambient control option (-20°F) - 208/230 volts 3 phase only, 460 or 575 volts</p>

PAR5, PAD4, PGR5, PGD4, PGS4, PHR5, PHD4 - Cabinet air leakage of 2.0% or less at 0.5 in. W.C. when tested in accordance with ASHRAE standard 193  
Factory installed option available for low cabinet air leakage and tin-coated copper evaporator main tubes.

RAS, RGS, RHS with VFDs comply with the U.S. Department of Energy (DOE) efficiency standard of 2018  
RGH 10, 17.5, 20, 25 ton units and RAH 10 ton units for installation in the United States contain use of 2-speed indoor fan control system.  
RAS, RGS, RHS, RAH, RGH, RHH units for installation outside the United States may or may not contain use of the 2-speed indoor fan control system as they are not required to comply with the U.S. Department of Energy (DOE) efficiency standard of 2018.

\* Single-phase split-system units are subject to the DOE Regional Efficiency Standards. \*\* Comfort Alert® is a registered trademark of Emerson Climate Technologies, Inc.  
\*\*\* For information regarding furnace or fan coil options that can increase the energy efficiency of selected Tempstar air conditioners (SEER and IEEER) and heat pumps (SEER, EER and HSPF), refer to www.GoTempstar.com/Product Information/Higher SEER and HSPF

Factory installed options (FIOPs) are available on select models of Tempstar® package rooftops. A full line of commercial accessories is available. See your Tempstar sales representative for availability!  
Tempstar® commercial products are covered by the following parts-only limited warranties: • Stainless Steel Heat Exchanger - 15 Yrs. (RGH & RGS models only) • Aluminized Steel Heat Exchanger - 10 Yrs. • Compressor - 5 Yrs. (unless otherwise indicated) • Parts - 1 Yr.  
Optional extended warranty available on all R series models and commercial splits 6 tons and above (available in the U.S. only).

A SIMPLER WAY TO CREATE CUSTOMIZED SUBMITTALS:

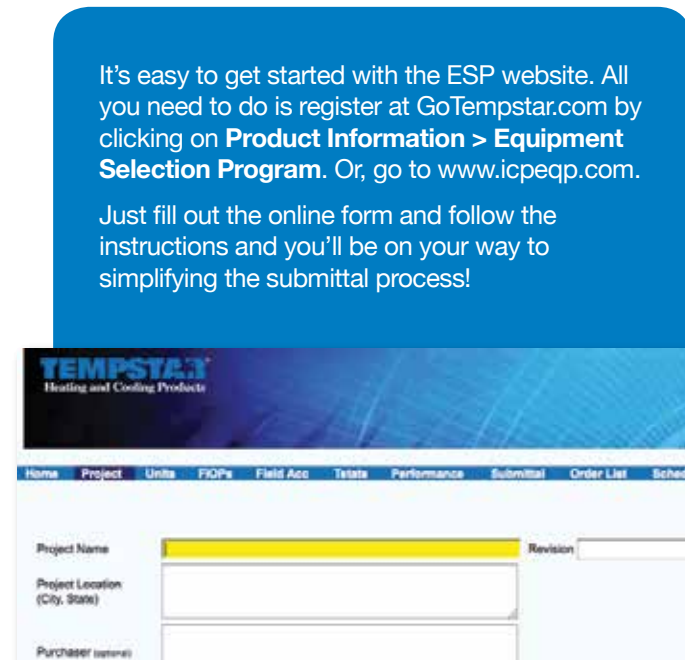
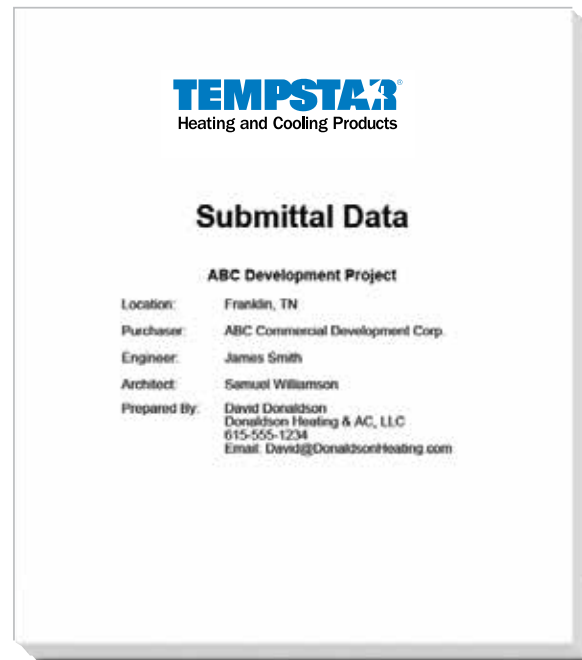


# Online Equipment Selection Program!



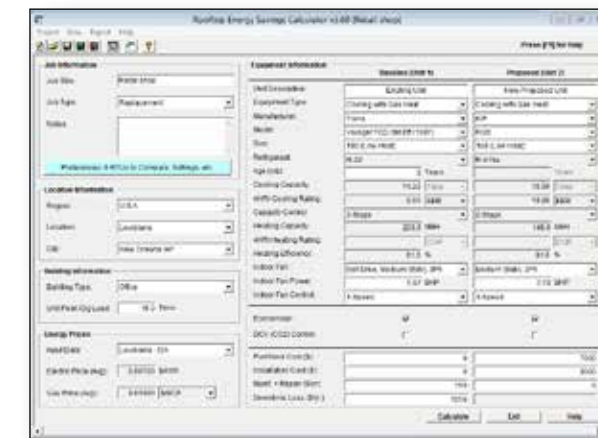
Use the **Equipment Selection Program** website to create submittals for engineers, code officials, builders or property owners or to quickly configure a unit for quoting purposes. It guides you through the process of selecting the right equipment for every application, based on the criteria you enter, matching the best products, factory installed options and correct accessories for every job.

Plus you can create a **complete professional presentation** in PDF or Word format with a customized appearance (left). Then you can print, email or save order lists to be used or revised at a later date, which allows you to provide engineers as many copies as they need without any hassle. You can also generate equipment schedules in Microsoft® Excel® format.



# Rooftop Energy Savings Calculator

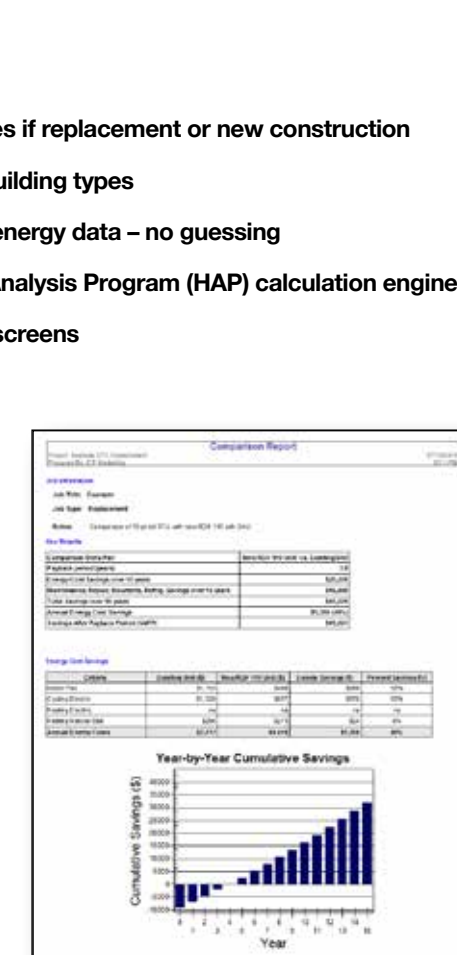
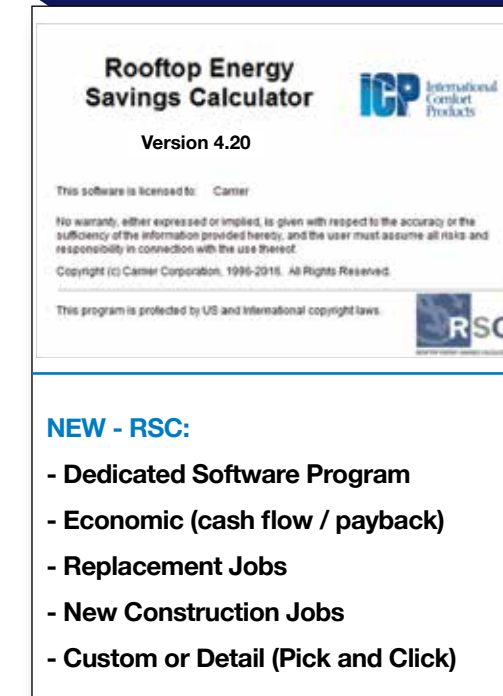
- Compare energy costs and payback performance of rooftop equipment. **Quick, intuitive and easy to use. Preloaded with the most commonly called out competitor models.**
- For replacement applications
  - Evaluate the energy cost savings and payback of replacing old, inefficient equipment
- For new construction applications
  - Helps evaluate the energy cost and payback performance of standard vs. high-efficiency equipment or competitor equipment
- Available on HVACPartners under “Products and Solutions”
- It's **FREE!** - Available on the GoSite with your Dealer Login



- Simple inputs
- Auto-populates if replacement or new construction
- Simulates 8 building types
- Pulls current energy data – no guessing
- Uses Hourly Analysis Program (HAP) calculation engine
- Intuitive help screens

### Calculates Professional Reports:

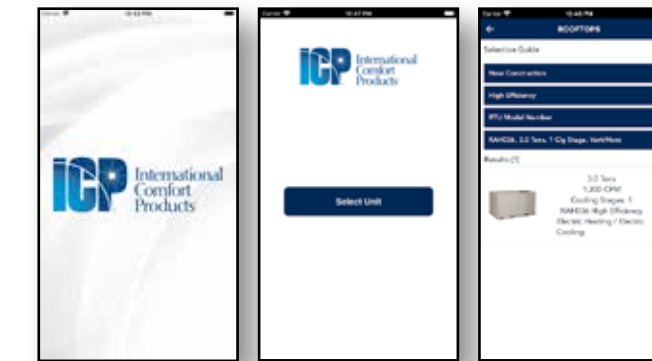
- Payback Period
- Maintenance, Repair Costs
- Total Energy Savings
- Graphic Displays
- Detailed Energy Savings:
  - Fan
  - Cooling
  - Heating
- Savings After Payback Period



# Get the ICP® RTU Mobile App on Your Smartphone

The ICP® Rooftops app allows users to perform on the spot selection of HVAC rooftop units for both replacement and new construction, and estimate energy savings between ICP® Standard and High-Efficiency units. Users can input an existing unit model number for Tempstar or competitive equipment, or desired unit specifications, and obtain the optimal Tempstar model for their requirements.

- Provides size, weight, base electrical data
- Select units by model, size, or CFM



Available on:  
Apple® iOS 13.0 and above  
Android™ 4.4 and above  
Smartphones and Tablets



Search the APP store on your mobile device, Click and Download:

Google Play Store – <https://play.google.com/store/apps/details?id=com.carrier.icprooftops>

iPhone – <https://apps.apple.com/us/app/icp-rooftops-for-iphone/id1096805695/?platform=iphone>

Android and Google Play are trademarks of Google Inc., registered in the U.S. and other countries. Apple, iOS and the Apple logo are trademarks of Apple Inc., registered in the U.S. and other countries. App Store is a service mark of Apple Inc. Microsoft is a registered trademark of Microsoft Corporation in the United States and/or other countries.

