

Deluxe 80 Single Stage Furnace

FLEXIBILITY

- 40" (1016mm) high for ease of installation
- Factory shipped for natural gas, with Propane Gas conversion kits available
- Four position – upflow/downflow/horizontal installation
- Category I venting
- Three position inducer capability
- Common venting

SERVICE

- Self diagnostics
- Entire blower assembly mounted on rails

COMFORT

- Adjustable time OFF blower delay
- 24 and 115 VAC humidifier terminal
- Electronic air cleaner terminal

EFFICIENCY

- 80% AFUE efficiency range
- Single stage gas valve operation
- Single stage integrated control
- Multispeed, prelubricated PSC motors
- Induced draft blower
- In-shot burners
- Insulated blower cabinet
- California NOx approved

QUALITY

- RPJ III Aluminized steel heat exchanger
- High temperature limit control prevents overheating
- Direct ignition with Silicon Nitride ignitor
- Flame roll-out sensors standard
- Louvered doors
- One piece prepainted steel cabinet
- Masonry chimney adapter available

WARRANTY *

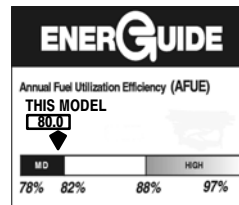
- 1 year No Hassle Replacement™ limited warranty
 - 20 year heat exchanger limited warranty
 - 5 year parts limited warranty
 - With timely registration, an additional 5 year parts limited warranty
- * Applies to original purchaser/homeowner, some limitations may apply. See warranty certificate for complete details.



Illustrations and photographs are only representative.
Some product models may vary.

▲ WARNING

This furnace is not designed for use in mobile homes, trailers, or recreational vehicles. Such use could result in property damage and/or death.



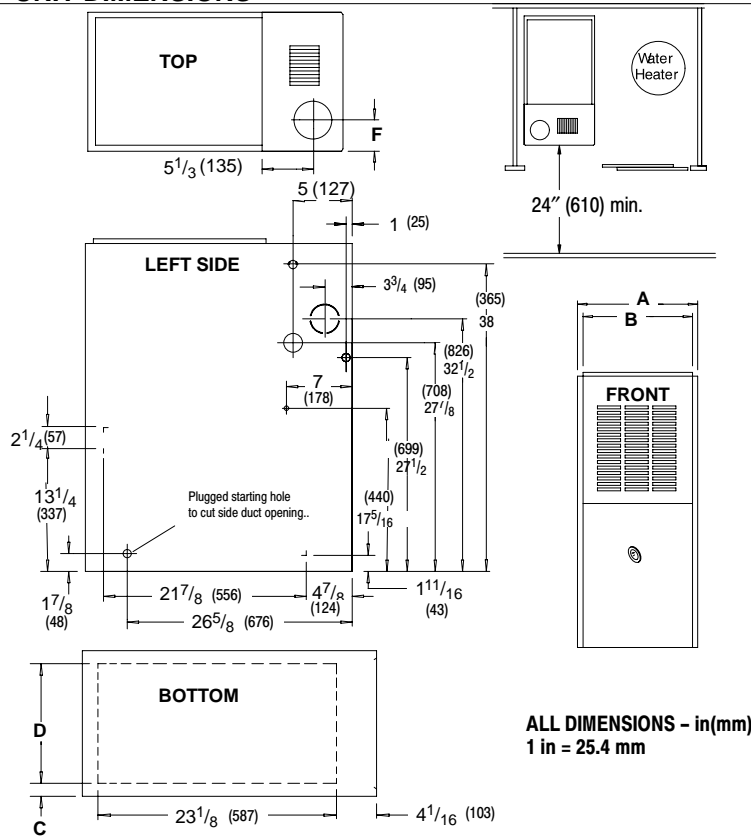
UPFLOW/DOWNFLOW/HORIZONTAL (NATURAL GAS)							
Model Number	Input (MBTUH)	Efficiency AFUE +	Cooling Capacity @ .5 in wc (125 Pa)	Dimensions H x W x D		Shipping Wt.	
				Inches	Millimeters	Lbs	Kg
H8MPL050B12B	50,000	80%	1.5 – 3.0 TON	40 x 15 ¹ / ₂ x 29	1016 x 394 x 737	128	58
H8MPL075B12B	75,000	80%	1.5 – 3.0 TON	40 x 15 ¹ / ₂ x 29	1016 x 394 x 737	134	61
H8MPL075F16B	75,000	80%	2.5 – 4.0 TON	40 x 19 ¹ / ₈ x 29	1016 x 486 x 737	140	64
H8MPL100F20B	100,000	80%	3.5 – 5.0 TON	40 x 19 ¹ / ₈ x 29	1016 x 486 x 737	156	71
H8MPL100J20B	100,000	80%	3.5 – 5.0 TON	40 x 22 ³ / ₄ x 29	1016 x 578 x 737	166	75
H8MPL125J20B	125,000	80%	3.5 – 5.0 TON	40 x 22 ³ / ₄ x 29	1016 x 578 x 737	172	78

FURNACE SPECIFICATIONS MULTI-POSITION

Model Number	NATURAL GAS	H8MPL					
		050B12	075B12	075F16	100F20	100J20	125J20
INPUT (btuh)		50,000	75,000	75,000	100,000	100,000	125,000
HTG. CAP. (btuh)		40,000	60,000	60,000	81,000	81,000	101,000
AFUE % (ICS)		80%	80%	80%	80%	80%	80%
TEMP. RISE DEGREES (°F/°C)		35-65/19-36	30-60/17-33	30-60/17-33	35-65/19-36	35-65/19-36	35-65/19-36
VOLTS/PH/HZ		115/1/60					
MIN./MAX. VOLTAGE		104/127					
RATING PLATE AMPS.		9.7	9.0	9.7	12.0	12.0	12.0
TRANSFORMER (V.A.)		40					
GAS PIPE SIZE - in(mm)		1/2 (12.7)					
FLUE COLLAR SIZE - in(mm)		4 (101.6)					
COOLING CAP.		3	3	4	5	5	5
DIMENSIONS H x W x D - in(mm)		40 x 15 1/2 x 29 (1016 x 394 x 737)			40 x 19 1/8 x 29 (1016 x 486 x 737)		40 x 22 3/4 x 29 (1016 x 578 x 737)
SHIPPING WEIGHT - Lbs(Kg)		128 (58)	134 (61)	140 (64)	156 (71)	166 (75)	172 (78)

(ICS) = Isolated Combustion System

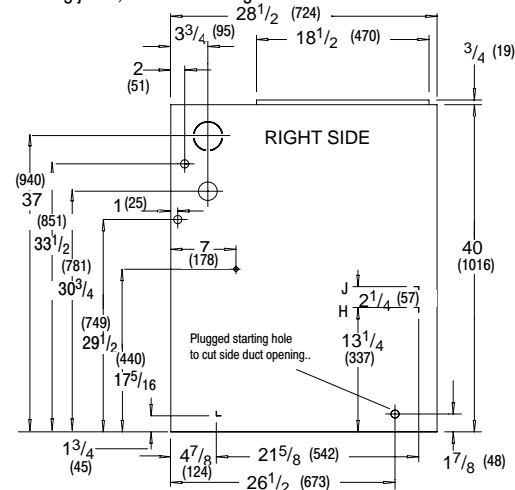
UNIT DIMENSIONS



MINIMUM CLEARANCES TO COMBUSTIBLE MATERIALS FOR ALL UNITS	
REAR	0
FRONT (combustion air openings in furnace and in structure)	3" (76 mm)
Required For Service	*24" (610 mm)
ALL SIDES OF SUPPLY PLENUM	1" (25 mm)
SIDES	0
VENT	
Single Wall Vent	6" (152 mm)
Type B-1 Double Wall Vent	1" (25 mm)
TOP OF FURNACE	1" (25 mm)

*30" (762 mm) clearance recommended for furnace removal.

Horizontal position: Line contact is permissible only between lines formed by intersections of top and two sides of furnace jacket, and building joists, studs or framing.



NOTE: Evaporator "A" coil drain pan dimensions may vary from furnace duct opening size. Always consult evaporator specifications for duct size requirements.

Furnace is designed for bottom return or side return. Return air through back of furnace is NOT allowed.

Drawing is representative, but some models may vary

Furnace Capacity	Cabinet		Top	Bottom		Return Air Opening
	A	B	F	C	D	
H8MPL050B12 H8MPL075B12	15 1/2 (394)	14 (356)	6 (152)	1 3/8 (35)	12 5/8 (321)	H
H8MPL075F16 H8MPL100F20	19 1/8 (486)	17 1/2 (445)	7 3/4 (197)	2 1/8 (54)	14 3/4 (375)	J
H8MPL100J22 H8MPL125J20	22 3/4 (578)	21 1/4 (540)	9 1/2 (241)	1 5/16 (49)	18 3/4 (476)	J

BLOWER PERFORMANCE MULTI-POSITION

Model Number	H8MPL					
	050B12(1)(6)	075B12(1)(6)	075F16(1)(3)(6)	100F20(2)(4)(6)	100J20(2)(6)	125J20(2)(5)(6)
BLOWER D x W - in(mm)	11 x 8 (279 x 203)	11 x 8 (279 x 203)	11 x 10 (279 x 254)	11 x 10 (279 x 254)	11 x 10 (279 x 254)	11 x 10 (279 x 254)
MOTOR H.P. (TYPE)	1/2/PSC	1/2/PSC	1/2/PSC	1/2/PSC	1/2/PSC	1/2/PSC
MOTOR SPEEDS	4	4	4	4	4	4

CIRCULATION AIR BLOWER DATA

H8MPL050B12 (1)(6)

External Static Pressure (in wc/Pa)		Air Delivery in CFM (L/s) Furnace Rated @0.5 in wc (125 Pa) ESP									
		TAP		LOW		MED L		MED H		HIGH	
		in wc	Pa	CFM	L/s	CFM	L/s	CFM	L/s	CFM	L/s
0.1	25	472	223	704	332	1167	551	1387	655		
0.2	50	419	198	671	317	1135	536	1338	631		
0.3	75	365	172	638	301	1102	520	1288	608		
0.4	100	328	155	605	286	1069	504	1241	586		
0.5	125	290	137	572	270	1035	488	1194	563		
0.6	149	250	118	547	258	987	466	1132	534		
0.7	174	209	99	522	246	939	443	1070	505		
0.8	199	---	---	483	228	880	415	1004	474		
0.9	224	---	---	443	209	820	387	937	442		
1.0	249	---	---	370	175	753	355	858	405		

H8MPL100F20 (2)(4)(6)

External Static Pressure (in wc/Pa)		Air Delivery in CFM (L/s) Furnace Rated @0.5 in wc (125 Pa) ESP									
		TAP		LOW		MED L		MED H		HIGH	
		in wc	Pa	CFM	L/s	CFM	L/s	CFM	L/s	CFM	L/s
0.1	25	831	392	1125	531	1582	747	2216	1046		
0.2	50	823	388	1124	530	1585	748	2198	1037		
0.3	75	814	384	1123	530	1588	749	2179	1028		
0.4	100	798	377	1120	529	1583	747	2127	1004		
0.5	125	781	369	1117	527	1577	744	2074	979		
0.6	149	749	353	1085	512	1559	736	1992	940		
0.7	174	717	338	1053	497	1541	727	1909	901		
0.8	199	663	313	1009	476	1457	688	1827	862		
0.9	224	609	287	964	455	1373	648	1745	824		
1	249	561	265	888	419	1307	617	1641	774		

H8MPL075B12 (1)(6)

External Static Pressure (in wc/Pa)		Air Delivery in CFM (L/s) Furnace Rated @0.5 in wc (125 Pa) ESP									
		TAP		LOW		MED L		MED H		HIGH	
		in wc	Pa	CFM	L/s	CFM	L/s	CFM	L/s	CFM	L/s
0.1	25	695	328	963	454	1220	576	1559	736		
0.2	50	670	316	946	446	1202	567	1511	713		
0.3	75	644	304	928	438	1183	558	1463	690		
0.4	100	616	291	901	425	1151	543	1412	666		
0.5	125	588	277	873	412	1118	528	1361	642		
0.6	149	564	266	822	388	1068	504	1300	613		
0.7	174	540	255	771	364	1017	480	1239	585		
0.8	199	502	237	723	341	959	453	1161	548		
0.9	224	463	218	675	319	900	425	1083	511		
1	249	413	195	615	290	835	394	998	471		

H8MPL100J20 (2)(6)

External Static Pressure (in wc/Pa)		Air Delivery in CFM (L/s) Furnace Rated @0.5 in wc (125 Pa) ESP									
		TAP		LOW		MED L		MED H		HIGH	
		in wc	Pa	CFM	L/s	CFM	L/s	CFM	L/s	CFM	L/s
0.1	25	773	365	1045	493	1453	686	2147	1013		
0.2	50	766	361	1029	486	1461	689	2142	1011		
0.3	75	755	356	1037	489	1469	693	2128	1004		
0.4	100	737	348	1037	489	1469	693	2113	997		
0.5	125	712	336	1020	481	1459	689	2078	981		
0.6	149	683	322	1013	478	1446	682	2029	958		
0.7	174	647	305	979	462	1424	672	1963	926		
0.8	199	603	285	942	445	1400	661	1892	893		
0.9	224	554	261	894	422	1347	636	1795	847		
1	249	497	235	828	391	1262	596	1705	805		

H8MPL075F16 (1)(3)(6)

External Static Pressure (in wc/Pa)		Air Delivery in CFM (L/s) Furnace Rated @0.5 in wc (125 Pa) ESP									
		TAP		LOW		MED L		MED H		HIGH	
		in wc	Pa	CFM	L/s	CFM	L/s	CFM	L/s	CFM	L/s
0.1	25	598	282	841	397	1427	673	1861	878		
0.2	50	499	235	795	375	1406	664	1816	857		
0.3	75	400	189	748	353	1384	653	1770	835		
0.4	100	345	163	708	334	1364	644	1724	814		
0.5	125	289	136	667	315	1343	634	1677	791		
0.6	149	263	124	625	295	1299	613	1612	761		
0.7	174	236	111	582	275	1254	592	1547	730		
0.8	199	---	---	530	250	1192	563	1454	686		
0.9	224	---	---	477	225	1129	533	1360	642		
1	249	---	---	436	206	1016	479	1262	596		

H8MPL125J20 (2)(5)(6)

External Static Pressure (in wc/Pa)		Air Delivery in CFM (L/s) Furnace Rated @0.5 in wc (125 Pa) ESP									
		TAP		LOW		MED L		MED H		HIGH	
		in wc	Pa	CFM	L/s	CFM	L/s	CFM	L/s	CFM	L/s
0.1	25	860	406	1149	542	1666	786	2147	1013		
0.2	50	848	400	1154	545	1622	765	2137	1008		
0.3	75	836	395	1158	546	1577	744	2126	1003		
0.4	100	821	387	1149	542	1569	740	2137	1008		
0.5	125	805	380	1140	538	1561	737	2148	1014		
0.6	149	782	369	1111	524	1539	726	2035	960		
0.7	174	758	358	1081	510	1516	715	1922	907		
0.8	199	710	335	1045	493	1472	695	1845	871		
0.9	224	661	312	1009	476	1428	674	1767	834		
1	249	614	290	925	437	1357	640	1663	785		

MAX CFM (L/s) for Factory Washable Filters			
Filter Size in(mm)		CFM	L/s
14 x 25	356 x 635	1400	661
16 x 25	406 x 635	1600	755
20 x 25	508 x 635	2000	944
24 x 25	610 x 635	2500	1180

NOTE: (1) Data based on Bottom Only or One Side return.
 (2) Data based on Both Sides or Bottom plus One Side
 (3) 075F16 Reduce airflow by 5% if Bottom Only return.
 (4) 100F20 Reduce airflow by 10% if Bottom Only return.
 (5) 125J20 Reduce airflow by 5% if Bottom Only return.
 (6) Gray area is above maximum temperature rise range.

NOTE: (1) Gray area is above maximum temperature rise range.
 # CFM – Cubic feet per minute airflow.
 L/s – Liters per second
 Filter required for each return–air inlet. Airflow performance includes 1” (25.4mm) washable – 600 FPM (3.0 M/s) max filter media.

MODEL NUMBER IDENTIFICATION GUIDE

Brand	H	8	MP	L	075	B	12	B	#	Engineering Rev. Denotes minor change
Efficiency 8 = Non-Condensing, 80+% Gas Furnace 9 = Condensing, 90+% Gas Furnace										Marketing Digit Denotes major change
Installation Configuration UP = Upflow DN = Downflow UH = Upflow/Horizontal HZ = Horizontal DH = Downflow/Horizontal MP = Multiposition, Upflow/Downflow/Horizontal										Cooling Airflow 08 = 800 CFM 16 = 1600 CFM 12 = 1200 CFM 20 = 2000 CFM 14 = 1400 CFM 22 = 2200 CFM
Major Design Feature 1 = One (Single) Pipe N = Single Stage 2 = Two Pipe P = PVC Vent D = 1 or 2 Pipe T = Two Stage L = Low NOx V = Variable Speed										Cabinet Width B = 15.5" Wide J = 22.8" Wide F = 19.1" Wide L = 24.5" Wide
										Input (Nominal MBTUH)

ACCESSORIES

Model Number	Description	Used With Models
TWINNING KIT		
NAHA004WK	Twinning kit. Allows operation of two identical-size model furnaces.	ALL H8MPL FURNACES
GAS CONVERSION KITS		
NAHA001LP 1172958**	Natural gas to Propane conversion Kit. Allows field conversion to Propane gas.	ALL H8MPL FURNACES
NAHA001NG 1172960**	Propane to natural gas conversion kit. Allows field conversion to natural gas. (Single Stage)	ALL H8MPL FURNACES
FILTER KITS		
NAHA001FF	Filter Kits – External filter frame. 16" x 25" (406mm x 635mm)	Side Return (All Furnaces) Bottom Return (All "F" 19 ¹ / ₈ " Furnaces under 1600 CFM)
NAHA001FP	External filter frame. 16" x 25" (406mm x 635mm) Bulk Pack Kit – Qty 10	
NAHA002FF	Filter Kits – Bottom return filter frame kit 20" x 25" (508mm x 635mm)	All "J" 22 ³ / ₄ " Furnaces
NAHA002FP	Bottom return filter frame kit 20" x 25" (508mm x 635mm) Bulk Pack Kit – Qty 10	
NAHA003FF	Bottom or side return filter frame kit 14" x 25" (356mm x 635mm)	All "B" 15 ¹ / ₂ " Furnaces
NAHA003FP	Bottom return filter frame kit 14" x 25" (356mm x 635mm) Bulk Pack Kit – Qty 10	
NAHA001TK	Duct Standoff Filter Kit. To adapt 20" x 25" (508mm x 635mm) filter for single side return.	Side Return (All single return applications with 1600 CFM or greater) Bottom Return (All "F" 19 ¹ / ₈ " Furnaces under 1600 CFM)
COMBUSTIBLE FLOOR SUBBASE		
NAHH001SB	Subbase Furnace ONLY: All 15 ¹ / ₂ " wide furnace models	H8MPL050–075B
NAHH002SB	Subbase Furnace ONLY: All 19 ¹ / ₄ " wide furnace models	H8MPL075–100
NAHH003SB	Subbase Furnace ONLY: All 22 ³ / ₄ " wide furnace models	H8MPL100–125
NAHH004SB	Subbase Furnace w/15 ¹ / ₂ " cased coil	Counterflow furnace H8MPL050–075
NAHH005SB	Subbase Furnace w/19 ¹ / ₄ " cased coil	Counterflow furnace H8MPL075–100F
NAHH006SB	Subbase Furnace w/22 ³ / ₄ " cased coil	Counterflow furnace H8MPL100–125J
MASONRY CHIMNEY ADAPTER		
NAHA001DH	Chimney adapter 6"(152mm)	H8MPL050, 075, 100
NAHA002DH	Chimney adapter 7"(178mm)	H8MPL125
VENT GUARD		
NAHA002VC	Downflow vent guard	All Furnaces in the Downflow application
COIL ADAPTER		
NAHA001CA	Coil Adapter for Downflow Furnaces	All Furnaces in the Downflow Application
WARNING LABEL REPLACEMENT KIT		
NAHA002WL	To replace Warning Labels, Operating Instructions & Wiring Labels on Blower Door when needed	H8MPL

** Fast part number

International Comfort Products, LLC
Lewisburg, TN 37091 U.S.A.
www.GoHeil.com