

# TECHNICAL SUPPORT MANUAL

## Split System Heat Pump

### (C,H,T)4H4

#### Safety Labeling and Signal Words

##### DANGER, WARNING, CAUTION, and NOTE

The signal words **DANGER**, **WARNING**, **CAUTION**, and **NOTE** are used to identify levels of hazard seriousness. The signal word **DANGER** is only used on product labels to signify an immediate hazard. The signal words **WARNING**, **CAUTION**, and **NOTE** will be used on product labels and throughout this manual and other manuals that may apply to the product.

**DANGER** – Immediate hazards which **will** result in severe personal injury or death.

**WARNING** – Hazards or unsafe practices which **could** result in severe personal injury or death.

**CAUTION** – Hazards or unsafe practices which **may** result in minor personal injury or product or property damage.

**NOTE** – Used to highlight suggestions which **will** result in enhanced installation, reliability, or operation.

##### Signal Words in Manuals

The signal word **WARNING** is used throughout this manual in the following manner:



The signal word **CAUTION** is used throughout this manual in the following manner:



##### Signal Words on Product Labeling

Signal words are used in combination with colors and/or pictures on product labels.

#### TABLE OF CONTENTS

|                                   |         |
|-----------------------------------|---------|
| Wiring Diagrams .....             | 2 – 3   |
| Charging Chart .....              | 4       |
| Tech Labels (Expanded Data) ..... | 5 – 12  |
| Cooling Multiplying Factors ..... | 13 – 16 |
| Heating Multiplying Factors ..... | 17 – 21 |
| Exploded Drawings .....           | 22 – 24 |
| C4H4 Parts List .....             | 25 – 27 |
| H4H4 Parts List .....             | 28 – 30 |
| T4H4 Parts List .....             | 31 – 33 |
| Model Number Identification ..... | 34      |



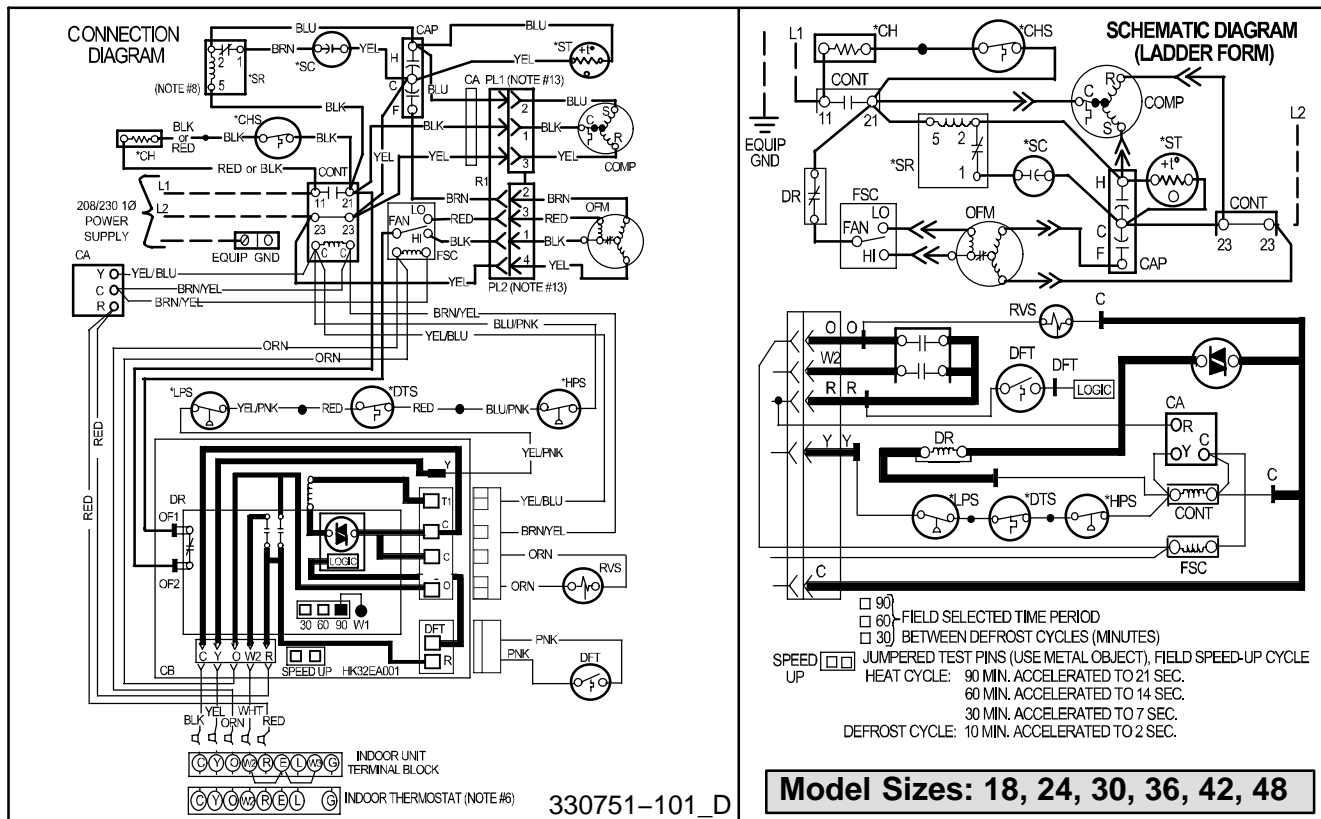
##### PERSONAL INJURY, AND/OR PROPERTY DAMAGE HAZARD

Failure to carefully read and follow this warning could result in equipment malfunction, property damage, personal injury and/or death.

Installation or repairs made by unqualified persons could result in equipment malfunction, property damage, personal injury and/or death.

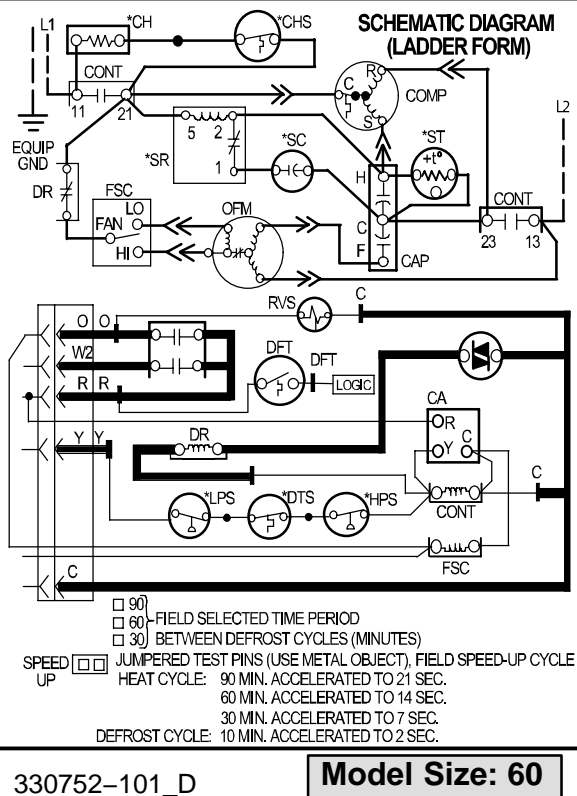
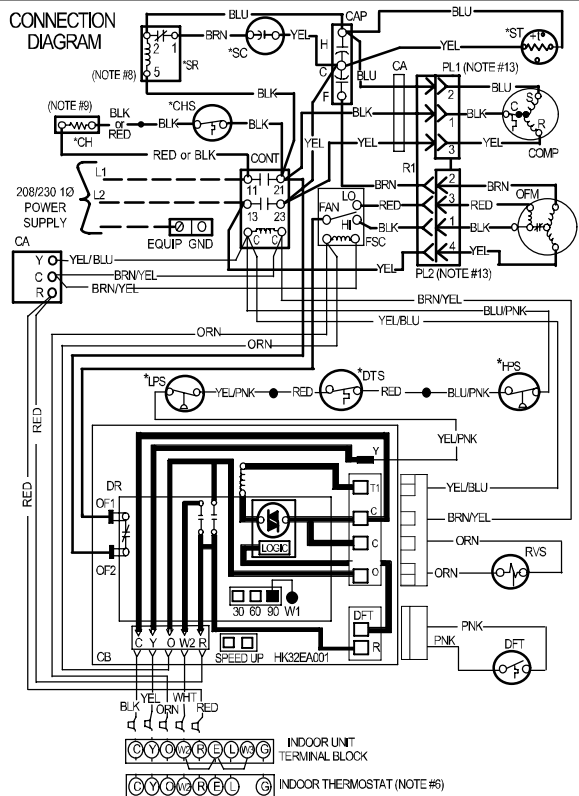
The information contained in this manual is intended for use by a qualified service technician familiar with safety procedures and equipped with the proper tools and test instruments.

Installation must conform with local building codes and with the National Electrical Code NFPA70 current edition or Canadian Electrical Code Part 1 CSA C.22.1.



**NOTES:**

1. Symbols are electrical representation only.
2. Compressor and fan motor furnished with inherent thermal protection.
3. To be wired in accordance with National Electric N.E.C. and local codes.
4. N.E.C. class 2, 24 V circuit, min. 40 VA required, 60 VA on units installed with LLS.
5. Use copper conductors only. Use conductors suitable for at least 75°C (167°F).
6. Must use thermostat and sub-base as stated in pre-sale literature.
7. If indoor section has a transformer with a grounded secondary, connect the grounded side to the BRN/YEL lead.
8. When start relay and start capacitor are installed, start thermistor is not used.
9. If any of the original wire, as supplied, must be replaced, use the same or equivalent wire.
10. Check all electrical connections inside control box for tightness.
11. Do not attempt to operate unit until service valves have been opened.
12. Do not rapid cycle compressor. Compressor must be off 3 minutes to allow pressures to equalize between high and low side before starting.
13. Not for interrupting current.



- LEGEND-**
- FACTORY POWER WIRING
  - FACTORY CONTROL WIRING
  - - - FIELD CONTROL WIRING
  - - - FIELD POWER WIRING
  - CONDUCTOR ON CIRCUIT BOARD
  - COMPONENT CONNECTION
  - FIELD SPlice
  - JUNCTION
  - ⊃ PLUG RECEPTACLE
- CA COMFORT ALERT
  - CAP CAPACITOR (DUAL RUN)
  - CB CIRCUIT BOARD
  - \*CH CRANKCASE HEATER
  - \*CHS CRANKCASE HEATER SWITCH
  - COMP COMPRESSOR
  - CONT CONTACTOR
  - DFT DEFROST THERMOSTAT
  - DR DEFROST RELAY AND CIRCUITRY
  - \*DTS DISCHARGE TEMP SWITCH
  - FSC FAN SPEED CONTROL
  - \*HPS HIGH PRESSURE SWITCH
  - \*LLS LIQ LINE SOLENOID VALVE
  - \*LPS LOW PRESSURE SWITCH
  - OFM OUTDOOR FAN MOTOR
  - PL1 COMPRESSOR PLUG
  - PL2 OUTDOOR FAN PLUG
  - R1 RECEPTACLE
  - RVS REVERSING VALVE SOLENOID
  - \*SC START CAPICATOR
  - \*SR START RELAY
  - \*ST START THERMISTOR

330752-101\_D

**Model Size: 60**

\* MAY BE FACTORY INSTALLED

- NOTES:**
1. Symbols are electrical representation only.
  2. Compressor and fan motor furnished with inherent thermal protection.
  3. To be wired in accordance with National Electric N.E.C. and local codes.
  4. N.E.C. class 2, 24 V circuit, min. 40 VA required, 60 VA on units installed with LLS.
  5. Use copper conductors only. Use conductors suitable for at least 75°C (167°F).
  6. Must use thermostat and sub-base as stated in pre-sale literature.
  7. If indoor section has a transformer with a grounded secondary, connect the grounded side to the BRN/YEL lead.
  8. When start relay and start capacitor are installed, start thermistor is not used.
  9. If any of the original wire, as supplied, must be replaced, use the same or equivalent wire.
  10. Check all electrical connections inside control box for tightness.
  11. Do not attempt to operate unit until service valves have been opened.
  12. Do not rapid cycle compressor. Compressor must be off 3 minutes to allow pressures to equalize between high and low side before starting.
  13. Not for interrupting current.

| <b>R-410A CHARGING CHART</b>                    |  |      |     |      |     |      |     |      |     |      |     |      |
|---|--|------|-----|------|-----|------|-----|------|-----|------|-----|------|
| Measured Liquid Pressure (psig)                 | Rating Plate (required) Subcooling Temperature °F (°C) |      |     |      |     |      |     |      |     |      |     |      |
|   | °F   | (°C) | °F  | (°C) | °F  | (°C) | °F  | (°C) | F   | (°C) | F   | (°C) |
|   | 6  | 3    | 8   | 4    | 10  | 6    | 12  | 7    | 14  | 8    | 16  | 9    |
| R-410A Required Liquid Line Temperature °F (°C) |  |      |     |      |     |      |     |      |     |      |     |      |
| <b>251</b>                                      | 78   | 26   | 76  | 24   | 74  | 23   | 72  | 22   | 70  | 21   | 68  | 20   |
| <b>259</b>                                      | 80   | 27   | 78  | 26   | 76  | 24   | 74  | 23   | 72  | 22   | 70  | 21   |
| <b>266</b>                                      | 82   | 28   | 80  | 27   | 78  | 26   | 76  | 24   | 74  | 23   | 72  | 22   |
| <b>274</b>                                      | 84   | 29   | 82  | 28   | 80  | 27   | 78  | 26   | 76  | 24   | 74  | 23   |
| <b>283</b>                                      | 86   | 30   | 84  | 29   | 82  | 28   | 80  | 27   | 78  | 26   | 76  | 24   |
| <b>291</b>                                      | 88   | 31   | 86  | 30   | 84  | 29   | 82  | 28   | 80  | 27   | 78  | 26   |
| <b>299</b>                                      | 90   | 32   | 88  | 31   | 86  | 30   | 84  | 29   | 82  | 28   | 80  | 27   |
| <b>308</b>                                      | 92   | 33   | 90  | 32   | 88  | 31   | 86  | 30   | 84  | 29   | 82  | 28   |
| <b>317</b>                                      | 94   | 34   | 92  | 33   | 90  | 32   | 88  | 31   | 86  | 30   | 84  | 29   |
| <b>326</b>                                      | 96   | 36   | 94  | 34   | 92  | 33   | 90  | 32   | 88  | 31   | 86  | 30   |
| <b>335</b>                                      | 98   | 37   | 96  | 36   | 94  | 34   | 92  | 33   | 90  | 32   | 88  | 31   |
| <b>345</b>                                      | 100  | 38   | 98  | 37   | 96  | 36   | 94  | 34   | 92  | 33   | 90  | 32   |
| <b>364</b>                                      | 104  | 40   | 102 | 39   | 100 | 38   | 98  | 37   | 96  | 36   | 94  | 34   |
| <b>374</b>                                      | 106  | 41   | 104 | 40   | 102 | 39   | 100 | 38   | 98  | 37   | 96  | 36   |
| <b>384</b>                                      | 108  | 42   | 106 | 41   | 104 | 40   | 102 | 39   | 100 | 38   | 98  | 37   |
| <b>395</b>                                      | 110  | 43   | 108 | 42   | 106 | 41   | 104 | 40   | 102 | 39   | 100 | 38   |
| <b>406</b>                                      | 112  | 44   | 110 | 43   | 108 | 42   | 106 | 41   | 104 | 40   | 102 | 39   |
| <b>416</b>                                      | 114  | 46   | 112 | 44   | 110 | 43   | 108 | 42   | 106 | 41   | 104 | 40   |
| <b>427</b>                                      | 116  | 47   | 114 | 46   | 112 | 44   | 110 | 43   | 108 | 42   | 106 | 41   |
| <b>439</b>                                      | 118  | 48   | 116 | 47   | 114 | 46   | 112 | 44   | 110 | 43   | 108 | 42   |
| <b>450</b>                                      | 120  | 49   | 118 | 48   | 116 | 47   | 114 | 46   | 112 | 44   | 110 | 43   |
| <b>462</b>                                      | 122  | 50   | 120 | 49   | 118 | 48   | 116 | 47   | 114 | 46   | 112 | 44   |
| <b>474</b>                                      | 124  | 51   | 122 | 50   | 120 | 49   | 118 | 48   | 116 | 47   | 114 | 46   |

## MULTIPLYING FACTORS

### (Refer to pages 6–12)

- † Total capacities are net (I.D. blower heat subtracted) system capacities based on 25' line set.  
If additional tubing length and/or indoor unit is located above outdoor unit, a slight variation in capacity may occur.
- †† At TVA rating indoor condition (75 °F db, 63 °F wb), all other indoor air temperatures are at 80 °F db  
If additional tubing length and/or indoor unit is located above outdoor unit, a slight variation in capacity may occur.
- \* System amps are total of indoor and outdoor amps.
- ‡ Chart data is for 80° F indoor dry bulb. For indoor db temperatures other than 80° F, measure Indoor db and Indoor CFM, and plug these into the formula below. Measure outdoor db and indoor wet bulb, apply these to the chart above, find MBh and S/T, and plug these into the formula below.  
(Note: if indoor db is the only thing changing, total capacity, MBh, stays the same.)

$$\text{Sensible Capacity at Indoor db LOWER than } 80^{\circ}\text{F} = (\text{MBh} \times \text{S/T}) - \left( \frac{(80 - \text{Indoor db}) \times 835 \times \text{Indoor CFM}}{1000} \right)$$

$$\text{Sensible Capacity at Indoor db HIGHER than } 80^{\circ}\text{F} = (\text{MBh} \times \text{S/T}) + \left( \frac{(\text{Indoor db} - 80) \times 835 \times \text{Indoor CFM}}{1000} \right)$$

| COOLING |       | 18 Size Outdoor With FEM4X18**** Indoor Cooling   |       |       |       |       |       |       |       |       |       |       |       |       |       |       |       |       |       |       |       |       |       |       |       |       |
|---------|-------|---|-------|-------|-------|-------|-------|-------|-------|-------|-------|-------|-------|-------|-------|-------|-------|-------|-------|-------|-------|-------|-------|-------|-------|-------|
|         |       | Outdoor Ambient Temperature – Degrees F, Dry Bulb |       |       |       |       |       |       |       |       |       |       |       |       |       |       |       |       |       |       |       |       |       |       |       |       |
|         |       | 75  |       |       |       |       | 85    |       |       |       |       | 95    |       |       |       |       | 105   |       |       |       |       | 115   |       |       |       |       |
|         |       | Entering Indoor Temperature – Degrees F, Wet Bulb |       |       |       |       |       |       |       |       |       |       |       |       |       |       |       |       |       |       |       |       |       |       |       |       |
| CFM     |       | 72  | 67    | 63    | 62††  | 57    | 72    | 67    | 63††  | 62    | 57    | 72    | 67    | 63††  | 62    | 57    | 72    | 67    | 63††  | 62    | 57    | 72    | 67    | 63††  | 62    | 57    |
| 525     | MBh†  | 21.03   | 19.06 | 17.66 | 17.31 | 16.70 | 20.03 | 18.13 | 16.79 | 16.45 | 16.02 | 18.98 | 17.16 | 15.86 | 15.56 | 15.30 | 17.86 | 16.12 | 14.92 | 14.64 | 14.54 | 16.67 | 15.02 | 13.85 | 13.72 | 13.72 |
|         | S/T‡  | 0.51  | 0.68  | 0.71  | 0.89  | 1.00  | 0.51  | 0.70  | 0.72  | 0.91  | 1.00  | 0.52  | 0.71  | 0.74  | 0.94  | 1.00  | 0.53  | 0.73  | 0.76  | 0.96  | 1.00  | 0.54  | 0.76  | 0.79  | 1.00  | 1.00  |
|         | AMPS* | 0.05  | 0.05  | 0.05  | 0.05  | 0.05  | 0.06  | 0.06  | 0.06  | 0.06  | 0.06  | 0.07  | 0.07  | 0.07  | 0.07  | 0.07  | 0.07  | 0.07  | 0.07  | 0.07  | 0.07  | 0.07  | 0.08  | 0.08  | 0.08  | 0.08  |
|         | HI PR | 263   | 261   | 260   | 259   | 259   | 305   | 302   | 301   | 300   | 300   | 350   | 348   | 346   | 346   | 345   | 400   | 398   | 396   | 396   | 396   | 456   | 454   | 452   | 452   | 452   |
|         | LO PR | 155   | 142   | 132   | 130   | 126   | 157   | 144   | 134   | 132   | 129   | 159   | 146   | 137   | 135   | 133   | 162   | 149   | 139   | 137   | 137   | 165   | 152   | 142   | 141   | 141   |
| 600     | MBh†  | 21.49   | 19.49 | 18.06 | 17.73 | 17.41 | 20.45 | 18.52 | 17.15 | 16.86 | 16.69 | 19.36 | 17.50 | 16.19 | 15.95 | 15.94 | 18.20 | 16.43 | 15.17 | 15.13 | 15.13 | 16.97 | 15.28 | 14.09 | 14.26 | 14.26 |
|         | S/T‡  | 0.52  | 0.71  | 0.74  | 0.93  | 1.00  | 0.53  | 0.73  | 0.75  | 0.95  | 1.00  | 0.54  | 0.74  | 0.77  | 1.00  | 0.55  | 0.77  | 0.80  | 1.00  | 1.00  | 0.56  | 0.79  | 0.82  | 1.00  | 1.00  |       |
|         | AMPS* | 0.05  | 0.05  | 0.05  | 0.05  | 0.05  | 0.06  | 0.06  | 0.06  | 0.06  | 0.06  | 0.07  | 0.07  | 0.07  | 0.07  | 0.07  | 0.07  | 0.07  | 0.07  | 0.07  | 0.07  | 0.08  | 0.08  | 0.08  | 0.08  | 0.08  |
|         | HI PR | 264   | 262   | 260   | 260   | 260   | 305   | 303   | 301   | 301   | 301   | 351   | 348   | 347   | 346   | 346   | 401   | 399   | 397   | 397   | 397   | 456   | 454   | 452   | 453   | 453   |
|         | LO PR | 158   | 145   | 135   | 134   | 131   | 160   | 147   | 137   | 136   | 135   | 163   | 149   | 140   | 138   | 138   | 165   | 152   | 142   | 142   | 142   | 168   | 154   | 144   | 146   | 146   |
| 625     | MBh†  | 21.62   | 19.60 | 18.17 | 17.86 | 17.63 | 20.57 | 18.62 | 17.25 | 16.99 | 16.90 | 19.46 | 17.60 | 16.28 | 16.12 | 16.12 | 18.29 | 16.51 | 15.25 | 15.30 | 15.30 | 17.05 | 15.35 | 14.16 | 14.42 | 14.42 |
|         | S/T‡  | 0.52  | 0.72  | 0.75  | 0.94  | 1.00  | 0.53  | 0.74  | 0.77  | 0.96  | 1.00  | 0.54  | 0.76  | 0.78  | 1.00  | 0.55  | 0.78  | 0.81  | 1.00  | 1.00  | 0.57  | 0.81  | 0.84  | 1.00  | 1.00  |       |
|         | AMPS* | 0.05  | 0.05  | 0.05  | 0.05  | 0.05  | 0.06  | 0.06  | 0.06  | 0.06  | 0.06  | 0.07  | 0.07  | 0.07  | 0.07  | 0.07  | 0.07  | 0.08  | 0.08  | 0.08  | 0.08  | 0.08  | 0.08  | 0.08  | 0.08  | 0.08  |
|         | HI PR | 264   | 262   | 260   | 260   | 260   | 305   | 303   | 301   | 301   | 301   | 351   | 349   | 347   | 347   | 347   | 401   | 399   | 397   | 397   | 397   | 457   | 454   | 452   | 453   | 453   |
|         | LO PR | 159   | 146   | 136   | 135   | 133   | 161   | 148   | 138   | 137   | 136   | 163   | 150   | 140   | 140   | 140   | 166   | 153   | 143   | 143   | 143   | 168   | 155   | 145   | 148   | 148   |

| HEATING |       | 18 Size Outdoor With FEM4X18**** Indoor Heating   |       |       |       |       |       |       |       |       |       |       |       |       |       |       |       |       |       |       |       |       |       |       |       |  |    |  |  |  |  |    |  |  |  |  |    |  |  |  |  |
|---------|-------|---|-------|-------|-------|-------|-------|-------|-------|-------|-------|-------|-------|-------|-------|-------|-------|-------|-------|-------|-------|-------|-------|-------|-------|--|----|--|--|--|--|----|--|--|--|--|----|--|--|--|--|
|         |       | Outdoor Ambient Temperature – Degrees F, Dry Bulb |       |       |       |       |       |       |       |       |       |       |       |       |       |       |       |       |       |       |       |       |       |       |       |  |    |  |  |  |  |    |  |  |  |  |    |  |  |  |  |
|         |       | -3  |       |       |       |       | 7     |       |       |       |       | 17    |       |       |       |       | 27    |       |       |       |       | 37    |       |       |       |  | 47 |  |  |  |  | 57 |  |  |  |  | 67 |  |  |  |  |
|         |       | Entering Indoor Temperature – Degrees F, Dry Bulb |       |       |       |       |       |       |       |       |       |       |       |       |       |       |       |       |       |       |       |       |       |       |       |  |    |  |  |  |  |    |  |  |  |  |    |  |  |  |  |
| CFM     |       | 65  | 70    | 75    | 65    | 70    | 75    | 65    | 70    | 75    | 65    | 70    | 75    | 65    | 70    | 75    | 65    | 70    | 75    | 65    | 70    | 75    | 65    | 70    | 75    |  |    |  |  |  |  |    |  |  |  |  |    |  |  |  |  |
| 525     | MBh†  | 6.35  | 6.02  | 5.68  | 8.24  | 7.94  | 7.62  | 10.29 | 10.00 | 9.69  | 12.59 | 12.25 | 11.93 | 15.18 | 14.85 | 14.45 | 18.06 | 17.67 | 17.29 | 21.27 | 20.82 | 20.38 | 24.82 | 24.33 | 23.84 |  |    |  |  |  |  |    |  |  |  |  |    |  |  |  |  |
|         | T/R   | 12.80   | 12.20 | 11.60 | 16.70 | 16.20 | 15.70 | 21.10 | 20.60 | 20.20 | 26.00 | 25.50 | 25.00 | 31.70 | 31.20 | 30.60 | 38.10 | 37.60 | 37.00 | 45.50 | 44.80 | 44.20 | 53.80 | 53.10 | 52.50 |  |    |  |  |  |  |    |  |  |  |  |    |  |  |  |  |
|         | AMPS* | 4.86  | 5.07  | 5.27  | 5.10  | 5.33  | 5.57  | 5.34  | 5.60  | 5.87  | 5.63  | 5.90  | 6.18  | 5.99  | 6.28  | 6.57  | 6.42  | 6.73  | 7.05  | 6.96  | 7.28  | 7.62  | 7.63  | 7.97  | 8.32  |  |    |  |  |  |  |    |  |  |  |  |    |  |  |  |  |
|         | HI PR | 232   | 248   | 264   | 247   | 264   | 281   | 265   | 282   | 301   | 287   | 305   | 323   | 314   | 333   | 352   | 348   | 367   | 388   | 388   | 409   | 430   | 436   | 458   | 480   |  |    |  |  |  |  |    |  |  |  |  |    |  |  |  |  |
|         | LO PR | 41  | 41    | 41    | 53    | 53    | 53    | 66    | 66    | 67    | 82    | 82    | 82    | 99    | 99    | 100   | 118   | 119   | 119   | 140   | 140   | 141   | 163   | 164   | 164   |  |    |  |  |  |  |    |  |  |  |  |    |  |  |  |  |
| 600     | MBh†  | 6.47  | 6.15  | 5.80  | 8.38  | 8.08  | 7.77  | 10.46 | 10.17 | 9.86  | 12.81 | 12.47 | 12.13 | 15.46 | 15.11 | 14.73 | 18.40 | 18.00 | 17.61 | 21.69 | 21.24 | 20.79 | 25.25 | 24.84 | 24.35 |  |    |  |  |  |  |    |  |  |  |  |    |  |  |  |  |
|         | T/R   | 11.40   | 10.90 | 10.40 | 14.80 | 14.40 | 14.00 | 18.60 | 18.30 | 17.90 | 23.00 | 22.60 | 22.20 | 28.00 | 27.60 | 27.10 | 33.70 | 33.20 | 32.80 | 40.20 | 39.70 | 39.10 | 47.40 | 47.00 | 46.40 |  |    |  |  |  |  |    |  |  |  |  |    |  |  |  |  |
|         | AMPS* | 4.86  | 5.07  | 5.28  | 5.07  | 5.31  | 5.54  | 5.28  | 5.54  | 5.81  | 5.54  | 5.81  | 6.09  | 5.86  | 6.15  | 6.44  | 6.25  | 6.55  | 6.87  | 6.75  | 7.06  | 7.39  | 7.29  | 7.66  | 8.03  |  |    |  |  |  |  |    |  |  |  |  |    |  |  |  |  |
|         | HI PR | 228   | 243   | 260   | 241   | 258   | 275   | 257   | 275   | 293   | 277   | 295   | 313   | 303   | 321   | 340   | 333   | 352   | 372   | 371   | 391   | 411   | 411   | 434   | 458   |  |    |  |  |  |  |    |  |  |  |  |    |  |  |  |  |
|         | LO PR | 41  | 41    | 41    | 53    | 53    | 53    | 66    | 66    | 67    | 82    | 82    | 82    | 99    | 99    | 100   | 118   | 118   | 119   | 139   | 140   | 140   | 162   | 163   | 164   |  |    |  |  |  |  |    |  |  |  |  |    |  |  |  |  |
| 675     | MBh†  | 6.57  | 6.25  | 5.91  | 8.50  | 8.20  | 7.88  | 10.59 | 10.30 | 10.00 | 12.98 | 12.65 | 12.31 | 15.68 | 15.33 | 14.97 | 18.66 | 18.26 | 17.86 | 21.99 | 21.55 | 21.11 | 25.40 | 25.08 | 24.69 |  |    |  |  |  |  |    |  |  |  |  |    |  |  |  |  |
|         | T/R   | 10.20   | 9.80  | 9.40  | 13.30 | 13.00 | 12.60 | 16.70 | 16.40 | 16.10 | 20.60 | 20.30 | 19.90 | 25.10 | 24.80 | 24.40 | 30.20 | 29.80 | 29.40 | 36.00 | 35.50 | 35.10 | 42.00 | 41.80 | 41.50 |  |    |  |  |  |  |    |  |  |  |  |    |  |  |  |  |
|         | AMPS* | 4.87  | 5.08  | 5.29  | 5.06  | 5.30  | 5.54  | 5.25  | 5.51  | 5.78  | 5.48  | 5.75  | 6.03  | 5.77  | 6.06  | 6.36  | 6.14  | 6.43  | 6.74  | 6.61  | 6.92  | 7.23  | 7.05  | 7.41  | 7.78  |  |    |  |  |  |  |    |  |  |  |  |    |  |  |  |  |
|         | HI PR | 224   | 240   | 257   | 237   | 254   | 271   | 251   | 269   | 287   | 270   | 288   | 306   | 294   | 312   | 331   | 323   | 341   | 361   | 358   | 378   | 398   | 393   | 415   | 438   |  |    |  |  |  |  |    |  |  |  |  |    |  |  |  |  |
|         | LO PR | 41  | 41    | 41    | 52    | 53    | 53    | 66    | 66    | 67    | 81    | 82    | 82    | 99    | 99    | 99    | 118   | 118   | 119   | 139   | 139   | 140   | 160   | 162   | 163   |  |    |  |  |  |  |    |  |  |  |  |    |  |  |  |  |

| COOLING |       | 24 Size Outdoor With FS(M,U)4X30**** Indoor Cooling |       |       |       |       |       |       |       |       |       |       |       |       |       |       |       |       |       |       |       |       |       |       |       |       |
|---------|-------|---|-------|-------|-------|-------|-------|-------|-------|-------|-------|-------|-------|-------|-------|-------|-------|-------|-------|-------|-------|-------|-------|-------|-------|-------|
|         |       | Outdoor Ambient Temperature – Degrees F, Dry Bulb   |       |       |       |       |       |       |       |       |       |       |       |       |       |       |       |       |       |       |       |       |       |       |       |       |
|         |       | 75  |       |       |       |       | 85    |       |       |       |       | 95    |       |       |       |       | 105   |       |       |       |       | 115   |       |       |       |       |
|         |       | Entering Indoor Temperature – Degrees F, Wet Bulb   |       |       |       |       |       |       |       |       |       |       |       |       |       |       |       |       |       |       |       |       |       |       |       |       |
| CFM     |       | 72  | 67    | 63††  | 62    | 57    | 72    | 67    | 63††  | 62    | 57    | 72    | 67    | 63††  | 62    | 57    | 72    | 67    | 63††  | 62    | 57    | 72    | 67    | 63††  | 62    | 57    |
| 700     | MBh†  | 27.78   | 25.42 | 23.69 | 23.23 | 22.41 | 26.42 | 24.18 | 22.53 | 22.10 | 21.50 | 24.98 | 22.86 | 21.30 | 20.91 | 20.54 | 23.49 | 21.47 | 20.00 | 19.67 | 19.51 | 21.89 | 20.00 | 18.62 | 18.40 | 18.40 |
|         | S/T‡  | 0.51  | 0.69  | 0.72  | 0.90  | 1.00  | 0.52  | 0.70  | 0.73  | 0.92  | 1.00  | 0.52  | 0.72  | 0.75  | 0.95  | 1.00  | 0.53  | 0.74  | 0.77  | 0.97  | 1.00  | 0.54  | 0.76  | 0.79  | 1.00  | 1.00  |
|         | AMPS* | 6.89  | 6.88  | 6.88  | 6.88  | 6.88  | 7.71  | 7.71  | 7.71  | 7.71  | 7.70  | 8.62  | 8.62  | 8.62  | 8.62  | 8.62  | 9.63  | 9.62  | 9.62  | 9.62  | 9.62  | 10.73 | 10.72 | 10.71 | 10.71 | 10.71 |
|         | HI PR | 256   | 254   | 252   | 252   | 251   | 296   | 294   | 292   | 292   | 291   | 341   | 338   | 336   | 336   | 335   | 389   | 386   | 384   | 384   | 383   | 442   | 439   | 437   | 437   | 436   |
|         | LO PR | 154   | 141   | 131   | 129   | 125   | 157   | 144   | 134   | 131   | 128   | 159   | 146   | 136   | 134   | 132   | 162   | 148   | 138   | 136   | 135   | 165   | 151   | 141   | 140   | 140   |
| 800     | MBh†  | 28.25   | 25.87 | 24.13 | 23.71 | 23.27 | 26.84 | 24.57 | 22.92 | 22.55 | 22.31 | 25.35 | 23.20 | 21.64 | 21.34 | 21.28 | 23.78 | 21.76 | 20.29 | 20.18 | 20.19 | 22.13 | 20.24 | 18.86 | 19.00 | 19.00 |
|         | S/T‡  | 0.52  | 0.72  | 0.75  | 0.95  | 1.00  | 0.53  | 0.74  | 0.76  | 0.97  | 1.00  | 0.54  | 0.76  | 0.78  | 0.99  | 1.00  | 0.55  | 0.78  | 0.80  | 1.00  | 1.00  | 0.57  | 0.81  | 0.83  | 1.00  | 1.00  |
|         | AMPS* | 7.04  | 7.04  | 7.03  | 7.03  | 7.03  | 7.86  | 7.86  | 7.86  | 7.86  | 7.86  | 8.77  | 8.77  | 8.77  | 8.77  | 8.77  | 9.78  | 9.77  | 9.77  | 9.77  | 9.77  | 10.88 | 10.87 | 10.87 | 10.86 | 10.87 |
|         | HI PR | 257   | 254   | 253   | 253   | 252   | 297   | 295   | 293   | 292   | 292   | 341   | 339   | 337   | 336   | 336   | 390   | 387   | 385   | 385   | 385   | 442   | 440   | 437   | 438   | 438   |
|         | LO PR | 158   | 145   | 135   | 133   | 130   | 160   | 147   | 137   | 135   | 134   | 162   | 149   | 139   | 137   | 137   | 165   | 151   | 141   | 141   | 141   | 167   | 154   | 143   | 145   | 145   |
| 900     | MBh†  | 28.60   | 26.20 | 24.46 | 24.12 | 23.99 | 27.14 | 24.86 | 23.20 | 22.98 | 22.97 | 25.60 | 23.45 | 21.88 | 21.88 | 21.89 | 23.99 | 21.96 | 20.49 | 20.73 | 20.73 | 22.30 | 20.40 | 19.03 | 19.48 | 19.49 |
|         | S/T‡  | 0.54  | 0.75  | 0.78  | 0.98  | 1.00  | 0.55  | 0.77  | 0.79  | 1.00  | 1.00  | 0.56  | 0.79  | 0.82  | 1.00  | 1.00  | 0.57  | 0.82  | 0.84  | 1.00  | 1.00  | 0.59  | 0.85  | 0.87  | 1.00  | 1.00  |
|         | AMPS* | 7.19  | 7.19  | 7.19  | 7.19  | 7.19  | 8.01  | 8.01  | 8.01  | 8.01  | 8.01  | 8.92  | 8.92  | 8.92  | 8.92  | 8.92  | 9.93  | 9.93  | 9.92  | 9.92  | 9.92  | 11.03 | 11.03 | 11.02 | 11.02 | 11.02 |
|         | HI PR | 257   | 255   | 253   | 253   | 253   | 297   | 295   | 293   | 293   | 293   | 342   | 339   | 337   | 337   | 337   | 390   | 387   | 385   | 386   | 386   | 443   | 440   | 438   | 439   | 439   |
|         | LO PR | 161   | 147   | 137   | 136   | 135   | 163   | 149   | 139   | 138   | 138   | 165   | 151   | 141   | 142   | 142   | 167   | 154   | 143   | 145   | 145   | 170   | 156   | 145   | 149   | 149   |

| HEATING |       | 24 Size Outdoor With FS(M,U)4X30**** Indoor Heating |       |       |       |       |       |       |       |       |       |       |       |       |       |       |       |       |       |       |       |       |       |       |       |  |    |  |  |  |  |    |  |  |  |  |    |  |  |  |  |
|---------|-------|---|-------|-------|-------|-------|-------|-------|-------|-------|-------|-------|-------|-------|-------|-------|-------|-------|-------|-------|-------|-------|-------|-------|-------|--|----|--|--|--|--|----|--|--|--|--|----|--|--|--|--|
|         |       | Outdoor Ambient Temperature – Degrees F, Dry Bulb   |       |       |       |       |       |       |       |       |       |       |       |       |       |       |       |       |       |       |       |       |       |       |       |  |    |  |  |  |  |    |  |  |  |  |    |  |  |  |  |
|         |       | -3  |       |       |       |       | 7     |       |       |       |       | 17    |       |       |       |       | 27    |       |       |       |       | 37    |       |       |       |  | 47 |  |  |  |  | 57 |  |  |  |  | 67 |  |  |  |  |
|         |       | Entering Indoor Temperature – Degrees F, Dry Bulb   |       |       |       |       |       |       |       |       |       |       |       |       |       |       |       |       |       |       |       |       |       |       |       |  |    |  |  |  |  |    |  |  |  |  |    |  |  |  |  |
| CFM     |       | 65  | 70    | 75    | 65    | 70    | 75    | 65    | 70    | 75    | 65    | 70    | 75    | 65    | 70    | 75    | 65    | 70    | 75    | 65    | 70    | 75    | 65    | 70    | 75    |  |    |  |  |  |  |    |  |  |  |  |    |  |  |  |  |
| 700     | MBh†  | 9.03  | 8.66  | 8.25  | 11.51 | 11.17 | 10.81 | 14.16 | 13.84 | 13.50 | 17.15 | 16.78 | 16.39 | 20.52 | 20.11 | 19.71 | 24.13 | 23.77 | 23.36 | 27.24 | 27.06 | 26.79 | 30.45 | 30.49 | 30.15 |  |    |  |  |  |  |    |  |  |  |  |    |  |  |  |  |
|         | T/R   | 14.00   | 13.50 | 13.00 | 17.90 | 17.60 | 17.10 | 22.30 | 21.90 | 21.60 | 27.20 | 26.80 | 26.40 | 32.90 | 32.50 | 32.10 | 39.10 | 38.80 | 38.50 | 44.60 | 44.70 | 44.60 | 50.30 | 50.90 | 50.70 |  |    |  |  |  |  |    |  |  |  |  |    |  |  |  |  |
|         | AMPS* | 6.26  | 6.51  | 6.76  | 6.61  | 6.90  | 7.20  | 6.96  | 7.29  | 7.63  | 7.39  | 7.74  | 8.09  | 7.91  | 8.28  | 8.67  | 8.43  | 8.85  | 9.28  | 8.95  | 9.41  | 9.87  | 9.52  | 10.05 | 10.53 |  |    |  |  |  |  |    |  |  |  |  |    |  |  |  |  |
|         | HI PR | 231   | 247   | 263   | 247   | 263   | 281   | 264   | 282   | 300   | 287   | 305   | 324   | 316   | 334   | 354   | 344   | 365   | 387   | 373   | 397   | 420   | 405   | 432   | 456   |  |    |  |  |  |  |    |  |  |  |  |    |  |  |  |  |
|         | LO PR | 39  | 39    | 39    | 50    | 50    | 51    | 63    | 64    | 64    | 78    | 78    | 79    | 95    | 95    | 95    | 112   | 113   | 114   | 127   | 129   | 131   | 142   | 146   | 147   |  |    |  |  |  |  |    |  |  |  |  |    |  |  |  |  |
| 800     | MBh†  | 9.22  | 8.85  | 8.45  | 11.72 | 11.39 | 11.02 | 14.40 | 14.08 | 13.74 | 17.45 | 17.07 | 16.69 | 20.87 | 20.47 | 20.06 | 24.24 | 24.00 | 23.69 | 27.28 | 27.03 | 26.85 | 28.82 | 29.28 | 29.62 |  |    |  |  |  |  |    |  |  |  |  |    |  |  |  |  |
|         | T/R   | 12.50   | 12.10 | 11.60 | 15.90 | 15.60 | 15.20 | 19.70 | 19.40 | 19.10 | 24.10 | 23.80 | 23.40 | 29.10 | 28.70 | 28.40 | 34.10 | 34.00 | 33.90 | 38.60 | 38.60 | 38.70 | 41.00 | 42.10 | 43.00 |  |    |  |  |  |  |    |  |  |  |  |    |  |  |  |  |
|         | AMPS* | 6.33  | 6.59  | 6.85  | 6.65  | 6.95  | 7.25  | 6.97  | 7.30  | 7.63  | 7.36  | 7.70  | 8.05  | 7.83  | 8.20  | 8.58  | 8.25  | 8.67  | 9.09  | 8.72  | 9.14  | 9.61  | 8.92  | 9.50  | 10.08 |  |    |  |  |  |  |    |  |  |  |  |    |  |  |  |  |
|         | HI PR | 227   | 243   | 259   | 241   | 258   | 275   | 257   | 274   | 293   | 278   | 296   | 314   | 304   | 323   | 342   | 328   | 349   | 370   | 354   | 376   | 399   | 366   | 396   | 425   |  |    |  |  |  |  |    |  |  |  |  |    |  |  |  |  |
|         | LO PR | 39  | 39    | 39    | 50    | 50    | 51    | 63    | 63    | 64    | 78    | 78    | 79    | 94    | 95    | 95    | 111   | 112   | 113   | 125   | 126   | 128   | 132   | 137   | 141   |  |    |  |  |  |  |    |  |  |  |  |    |  |  |  |  |
| 900     | MBh†  | 9.40  | 9.03  | 8.62  | 11.90 | 11.57 | 11.22 | 14.62 | 14.28 | 13.95 | 17.73 | 17.32 | 16.94 | 21.15 | 20.75 | 20.35 | 24.25 | 24.05 | 23.83 | 26.58 | 27.01 | 26.79 | 27.42 | 28.01 | 28.52 |  |    |  |  |  |  |    |  |  |  |  |    |  |  |  |  |
|         | T/R   | 11.30   | 10.90 | 10.50 | 14.30 | 14.10 | 13.70 | 17.70 | 17.50 | 17.20 | 21.70 | 21.30 | 21.00 | 26.00 | 25.80 | 25.50 | 30.10 | 30.10 | 30.10 | 33.10 | 34.00 | 34.10 | 34.30 | 35.40 | 36.40 |  |    |  |  |  |  |    |  |  |  |  |    |  |  |  |  |
|         | AMPS* | 6.42  | 6.69  | 6.94  | 6.71  | 7.01  | 7.32  | 7.00  | 7.33  | 7.67  | 7.37  | 7.71  | 8.06  | 7.79  | 8.17  | 8.55  | 8.17  | 8.57  | 8.99  | 8.49  | 9.01  | 9.45  | 8.57  | 9.12  | 9.69  |  |    |  |  |  |  |    |  |  |  |  |    |  |  |  |  |
|         | HI PR | 224   | 240   | 256   | 236   | 253   | 271   | 251   | 268   | 287   | 271   | 288   | 307   | 294   | 314   | 333   | 316   | 337   | 358   | 335   | 362   | 384   | 339   | 368   | 397   |  |    |  |  |  |  |    |  |  |  |  |    |  |  |  |  |
|         | LO PR | 39  | 39    | 39    | 50    | 50    | 51    | 63    | 63    | 64    | 78    | 78    | 78    | 94    | 95    | 95    | 109   | 110   | 112   | 119   | 124   | 126   | 123   | 128   | 134   |  |    |  |  |  |  |    |  |  |  |  |    |  |  |  |  |

| COOLING |       | 30 Size Outdoor With FSU4X36**** Indoor Cooling   |       |       |       |       |       |       |       |       |       |       |       |       |       |       |       |       |       |       |       |       |       |       |       |       |
|---------|-------|---|-------|-------|-------|-------|-------|-------|-------|-------|-------|-------|-------|-------|-------|-------|-------|-------|-------|-------|-------|-------|-------|-------|-------|-------|
|         |       | Outdoor Ambient Temperature – Degrees F, Dry Bulb |       |       |       |       |       |       |       |       |       |       |       |       |       |       |       |       |       |       |       |       |       |       |       |       |
|         |       | 75  |       |       |       |       | 85    |       |       |       |       | 95    |       |       |       |       | 105   |       |       |       |       | 115   |       |       |       |       |
|         |       | Entering Indoor Temperature – Degrees F, Wet Bulb |       |       |       |       |       |       |       |       |       |       |       |       |       |       |       |       |       |       |       |       |       |       |       |       |
| CFM     |       | 72  | 67    | 63††  | 62    | 57    | 72    | 67    | 63††  | 62    | 57    | 72    | 67    | 63††  | 62    | 57    | 72    | 67    | 63††  | 62    | 57    | 72    | 67    | 63††  | 62    | 57    |
| 875     | MBh†  | 34.58   | 31.36 | 29.06 | 28.49 | 27.61 | 33.01 | 29.89 | 27.68 | 27.15 | 26.53 | 31.34 | 28.35 | 26.22 | 25.75 | 25.39 | 29.57 | 26.71 | 24.67 | 24.28 | 24.17 | 27.66 | 24.94 | 23.01 | 22.84 | 22.85 |
|         | S/T‡  | 0.50  | 0.68  | 0.71  | 0.90  | 1.00  | 0.50  | 0.70  | 0.72  | 0.92  | 1.00  | 0.51  | 0.71  | 0.74  | 0.94  | 1.00  | 0.52  | 0.73  | 0.76  | 0.96  | 1.00  | 0.53  | 0.75  | 0.78  | 1.00  | 1.00  |
|         | AMPS* | 8.68  | 8.67  | 8.66  | 8.66  | 8.66  | 9.63  | 9.61  | 9.61  | 9.60  | 9.60  | 10.68 | 10.67 | 10.66 | 10.66 | 10.65 | 11.85 | 11.83 | 11.82 | 11.81 | 11.81 | 13.12 | 13.10 | 13.09 | 13.09 | 13.09 |
|         | HI PR | 260   | 257   | 255   | 254   | 253   | 301   | 298   | 295   | 294   | 294   | 346   | 342   | 339   | 339   | 338   | 395   | 391   | 388   | 387   | 387   | 449   | 444   | 441   | 441   | 441   |
|         | LO PR | 156   | 143   | 134   | 132   | 128   | 158   | 145   | 136   | 134   | 131   | 161   | 148   | 138   | 136   | 134   | 163   | 150   | 140   | 138   | 138   | 166   | 152   | 142   | 142   | 142   |
| 1000    | MBh†  | 35.23   | 31.94 | 29.60 | 29.09 | 28.68 | 33.58 | 30.41 | 28.16 | 27.72 | 27.54 | 31.85 | 28.80 | 26.64 | 26.34 | 26.33 | 30.01 | 27.10 | 25.04 | 25.04 | 25.04 | 28.04 | 25.27 | 23.32 | 23.64 | 23.64 |
|         | S/T‡  | 0.51  | 0.71  | 0.74  | 0.94  | 1.00  | 0.52  | 0.73  | 0.75  | 0.96  | 1.00  | 0.53  | 0.74  | 0.77  | 1.00  | 1.00  | 0.54  | 0.77  | 0.79  | 1.00  | 1.00  | 0.55  | 0.79  | 0.82  | 1.00  | 1.00  |
|         | AMPS* | 8.91  | 8.89  | 8.88  | 8.88  | 8.88  | 9.85  | 9.83  | 9.83  | 9.82  | 9.82  | 10.90 | 10.89 | 10.88 | 10.88 | 10.88 | 12.07 | 12.05 | 12.04 | 12.04 | 12.04 | 13.35 | 13.32 | 13.31 | 13.31 | 13.31 |
|         | HI PR | 261   | 258   | 255   | 255   | 255   | 302   | 298   | 296   | 295   | 295   | 347   | 343   | 340   | 340   | 340   | 396   | 392   | 389   | 389   | 389   | 450   | 445   | 442   | 442   | 442   |
|         | LO PR | 160   | 146   | 137   | 135   | 133   | 162   | 148   | 138   | 137   | 136   | 164   | 150   | 140   | 139   | 139   | 166   | 153   | 142   | 143   | 143   | 168   | 155   | 145   | 147   | 147   |
| 1125    | MBh†  | 35.70   | 32.36 | 30.00 | 29.60 | 29.57 | 34.01 | 30.78 | 28.51 | 28.37 | 28.37 | 32.22 | 29.13 | 26.95 | 27.11 | 27.11 | 30.33 | 27.38 | 25.30 | 25.75 | 25.75 | 28.30 | 25.51 | 23.54 | 24.28 | 24.29 |
|         | S/T‡  | 0.53  | 0.74  | 0.77  | 1.00  | 1.00  | 0.53  | 0.76  | 0.79  | 1.00  | 1.00  | 0.54  | 0.78  | 0.81  | 1.00  | 1.00  | 0.56  | 0.80  | 0.83  | 1.00  | 1.00  | 0.57  | 0.83  | 0.86  | 1.00  | 1.00  |
|         | AMPS* | 9.13  | 9.11  | 9.10  | 9.10  | 9.10  | 10.07 | 10.05 | 10.04 | 10.04 | 10.04 | 11.13 | 11.11 | 11.10 | 11.10 | 11.10 | 12.29 | 12.27 | 12.26 | 12.26 | 12.26 | 13.57 | 13.55 | 13.53 | 13.53 | 13.53 |
|         | HI PR | 261   | 258   | 256   | 256   | 256   | 303   | 299   | 296   | 296   | 296   | 348   | 344   | 341   | 341   | 341   | 397   | 393   | 389   | 390   | 390   | 450   | 446   | 442   | 444   | 444   |
|         | LO PR | 162   | 149   | 139   | 138   | 138   | 164   | 151   | 141   | 141   | 141   | 166   | 153   | 143   | 144   | 144   | 168   | 155   | 145   | 147   | 147   | 171   | 157   | 147   | 151   | 151   |

| HEATING |       | 30 Size Outdoor With FSU4X36**** Indoor Heating   |       |       |       |       |       |       |       |       |       |       |       |       |       |       |       |       |       |       |       |       |       |       |       |  |    |  |  |  |  |    |  |  |  |  |    |  |  |  |  |
|---------|-------|---|-------|-------|-------|-------|-------|-------|-------|-------|-------|-------|-------|-------|-------|-------|-------|-------|-------|-------|-------|-------|-------|-------|-------|--|----|--|--|--|--|----|--|--|--|--|----|--|--|--|--|
|         |       | Outdoor Ambient Temperature – Degrees F, Dry Bulb |       |       |       |       |       |       |       |       |       |       |       |       |       |       |       |       |       |       |       |       |       |       |       |  |    |  |  |  |  |    |  |  |  |  |    |  |  |  |  |
|         |       | -3  |       |       |       |       | 7     |       |       |       |       | 17    |       |       |       |       | 27    |       |       |       |       | 37    |       |       |       |  | 47 |  |  |  |  | 57 |  |  |  |  | 67 |  |  |  |  |
|         |       | Entering Indoor Temperature – Degrees F, Dry Bulb |       |       |       |       |       |       |       |       |       |       |       |       |       |       |       |       |       |       |       |       |       |       |       |  |    |  |  |  |  |    |  |  |  |  |    |  |  |  |  |
| CFM     |       | 65  | 70    | 75    | 65    | 70    | 75    | 65    | 70    | 75    | 65    | 70    | 75    | 65    | 70    | 75    | 65    | 70    | 75    | 65    | 70    | 75    | 65    | 70    | 75    |  |    |  |  |  |  |    |  |  |  |  |    |  |  |  |  |
| 875     | MBh†  | 11.58   | 11.10 | 10.59 | 14.63 | 14.20 | 13.74 | 17.91 | 17.50 | 17.06 | 21.47 | 21.02 | 20.61 | 25.55 | 25.07 | 24.50 | 30.03 | 29.48 | 28.94 | 35.06 | 34.44 | 33.82 | 40.65 | 39.97 | 39.27 |  |    |  |  |  |  |    |  |  |  |  |    |  |  |  |  |
|         | T/R   | 13.30   | 12.90 | 12.40 | 17.00 | 16.60 | 16.20 | 20.90 | 20.60 | 20.30 | 25.30 | 25.00 | 24.70 | 30.40 | 30.10 | 29.60 | 36.10 | 35.70 | 35.30 | 42.60 | 42.20 | 41.70 | 50.00 | 49.60 | 49.10 |  |    |  |  |  |  |    |  |  |  |  |    |  |  |  |  |
|         | AMPS* | 8.29  | 8.61  | 8.93  | 8.66  | 9.02  | 9.39  | 9.02  | 9.42  | 9.83  | 9.45  | 9.87  | 10.31 | 9.97  | 10.42 | 10.87 | 10.59 | 11.06 | 11.55 | 11.36 | 11.85 | 12.36 | 12.31 | 12.83 | 13.36 |  |    |  |  |  |  |    |  |  |  |  |    |  |  |  |  |
|         | HI PR | 231   | 247   | 263   | 245   | 262   | 280   | 262   | 280   | 298   | 282   | 300   | 320   | 308   | 327   | 346   | 337   | 357   | 378   | 374   | 395   | 416   | 419   | 441   | 463   |  |    |  |  |  |  |    |  |  |  |  |    |  |  |  |  |
|         | LO PR | 38  | 38    | 39    | 49    | 50    | 50    | 62    | 63    | 63    | 77    | 77    | 77    | 93    | 93    | 94    | 111   | 112   | 112   | 131   | 132   | 132   | 153   | 153   | 154   |  |    |  |  |  |  |    |  |  |  |  |    |  |  |  |  |
| 1000    | MBh†  | 11.85   | 11.37 | 10.86 | 14.92 | 14.50 | 14.04 | 18.23 | 17.82 | 17.39 | 21.86 | 21.39 | 20.96 | 25.99 | 25.50 | 24.96 | 30.55 | 30.00 | 29.45 | 35.68 | 35.06 | 34.44 | 41.37 | 40.69 | 40.02 |  |    |  |  |  |  |    |  |  |  |  |    |  |  |  |  |
|         | T/R   | 11.90   | 11.50 | 11.10 | 15.10 | 14.80 | 14.40 | 18.60 | 18.30 | 18.00 | 22.40 | 22.10 | 21.90 | 26.90 | 26.60 | 26.20 | 31.90 | 31.60 | 31.20 | 37.60 | 37.20 | 36.90 | 44.10 | 43.70 | 43.30 |  |    |  |  |  |  |    |  |  |  |  |    |  |  |  |  |
|         | AMPS* | 8.43  | 8.75  | 9.07  | 8.75  | 9.12  | 9.49  | 9.08  | 9.47  | 9.89  | 9.46  | 9.87  | 10.31 | 9.93  | 10.38 | 10.82 | 10.50 | 10.96 | 11.44 | 11.22 | 11.69 | 12.19 | 11.98 | 12.57 | 13.12 |  |    |  |  |  |  |    |  |  |  |  |    |  |  |  |  |
|         | HI PR | 227   | 243   | 260   | 240   | 257   | 274   | 255   | 272   | 291   | 273   | 291   | 310   | 297   | 316   | 335   | 324   | 344   | 364   | 359   | 379   | 400   | 397   | 421   | 444   |  |    |  |  |  |  |    |  |  |  |  |    |  |  |  |  |
|         | LO PR | 38  | 38    | 39    | 49    | 50    | 50    | 62    | 62    | 63    | 77    | 77    | 77    | 93    | 93    | 94    | 111   | 111   | 112   | 131   | 131   | 132   | 152   | 153   | 153   |  |    |  |  |  |  |    |  |  |  |  |    |  |  |  |  |
| 1125    | MBh†  | 12.09   | 11.62 | 11.11 | 15.18 | 14.76 | 14.31 | 18.51 | 18.11 | 17.68 | 22.19 | 21.72 | 21.27 | 26.36 | 25.87 | 25.39 | 30.98 | 30.43 | 29.88 | 36.16 | 35.55 | 34.93 | 41.80 | 41.20 | 40.56 |  |    |  |  |  |  |    |  |  |  |  |    |  |  |  |  |
|         | T/R   | 10.80   | 10.50 | 10.10 | 13.60 | 13.40 | 13.10 | 16.70 | 16.50 | 16.20 | 20.10 | 19.90 | 19.60 | 24.10 | 23.90 | 23.60 | 28.60 | 28.30 | 28.00 | 33.60 | 33.30 | 33.00 | 39.30 | 39.00 | 38.70 |  |    |  |  |  |  |    |  |  |  |  |    |  |  |  |  |
|         | AMPS* | 8.58  | 8.91  | 9.23  | 8.87  | 9.24  | 9.61  | 9.16  | 9.56  | 9.97  | 9.52  | 9.93  | 10.36 | 9.96  | 10.39 | 10.85 | 10.50 | 10.95 | 11.42 | 11.19 | 11.65 | 12.13 | 11.81 | 12.35 | 12.93 |  |    |  |  |  |  |    |  |  |  |  |    |  |  |  |  |
|         | HI PR | 224   | 240   | 256   | 236   | 252   | 270   | 249   | 267   | 285   | 267   | 284   | 303   | 288   | 307   | 327   | 315   | 334   | 354   | 349   | 368   | 388   | 381   | 403   | 427   |  |    |  |  |  |  |    |  |  |  |  |    |  |  |  |  |
|         | LO PR | 38  | 38    | 38    | 49    | 50    | 50    | 62    | 62    | 63    | 77    | 77    | 77    | 93    | 93    | 93    | 111   | 111   | 112   | 130   | 131   | 131   | 151   | 152   | 153   |  |    |  |  |  |  |    |  |  |  |  |    |  |  |  |  |



| COOLING |       | 36 Size Outdoor With FS(M,U)4X42**** Indoor Cooling |       |       |       |       |       |       |       |       |       |       |       |       |       |       |       |       |       |       |       |       |       |       |       |       |
|---------|-------|---|-------|-------|-------|-------|-------|-------|-------|-------|-------|-------|-------|-------|-------|-------|-------|-------|-------|-------|-------|-------|-------|-------|-------|-------|
|         |       | Outdoor Ambient Temperature – Degrees F, Dry Bulb   |       |       |       |       |       |       |       |       |       |       |       |       |       |       |       |       |       |       |       |       |       |       |       |       |
|         |       | 75  |       |       |       |       | 85    |       |       |       |       | 95    |       |       |       |       | 105   |       |       |       |       | 115   |       |       |       |       |
|         |       | Entering Indoor Temperature – Degrees F, Wet Bulb   |       |       |       |       |       |       |       |       |       |       |       |       |       |       |       |       |       |       |       |       |       |       |       |       |
| CFM     |       | 72  | 67    | 63††  | 62    | 57    | 72    | 67    | 63††  | 62    | 57    | 72    | 67    | 63††  | 62    | 57    | 72    | 67    | 63††  | 62    | 57    | 72    | 67    | 63††  | 62    | 57    |
| 1050    | MBh†  | 41.90   | 38.05 | 35.28 | 34.58 | 33.39 | 40.00 | 36.30 | 33.62 | 32.97 | 32.10 | 38.00 | 34.44 | 31.87 | 31.28 | 30.74 | 35.86 | 32.46 | 30.01 | 29.50 | 29.27 | 33.55 | 30.33 | 28.00 | 27.68 | 27.68 |
|         | S/T‡  | 0.52  | 0.70  | 0.73  | 0.92  | 1.00  | 0.52  | 0.72  | 0.75  | 0.94  | 1.00  | 0.53  | 0.73  | 0.76  | 0.97  | 1.00  | 0.54  | 0.75  | 0.78  | 0.99  | 1.00  | 0.55  | 0.77  | 0.80  | 1.00  | 1.00  |
|         | AMPS* | 10.58   | 10.53 | 10.50 | 10.49 | 10.48 | 11.73 | 11.69 | 11.65 | 11.64 | 11.63 | 13.01 | 12.96 | 12.92 | 12.92 | 12.91 | 14.42 | 14.37 | 14.33 | 14.32 | 14.31 | 15.96 | 15.90 | 15.85 | 15.85 | 15.85 |
|         | HI PR | 261   | 258   | 255   | 255   | 254   | 302   | 299   | 296   | 296   | 295   | 348   | 344   | 341   | 340   | 340   | 397   | 393   | 390   | 389   | 389   | 451   | 447   | 443   | 443   | 443   |
|         | LO PR | 155   | 142   | 133   | 131   | 126   | 157   | 144   | 135   | 133   | 129   | 160   | 147   | 137   | 135   | 133   | 162   | 149   | 139   | 137   | 136   | 165   | 151   | 141   | 140   | 140   |
| 1200    | MBh†  | 42.70   | 38.76 | 35.95 | 35.31 | 34.71 | 40.72 | 36.92 | 34.23 | 33.66 | 33.34 | 38.62 | 35.00 | 32.41 | 31.93 | 31.89 | 36.40 | 32.94 | 30.47 | 30.34 | 30.34 | 34.00 | 30.74 | 28.40 | 28.65 | 28.66 |
|         | S/T‡  | 0.53  | 0.73  | 0.76  | 0.97  | 1.00  | 0.54  | 0.75  | 0.78  | 0.99  | 1.00  | 0.55  | 0.77  | 0.80  | 1.00  | 1.00  | 0.56  | 0.79  | 0.82  | 1.00  | 1.00  | 0.57  | 0.81  | 0.84  | 1.00  | 1.00  |
|         | AMPS* | 10.86   | 10.80 | 10.77 | 10.76 | 10.76 | 12.01 | 11.95 | 11.92 | 11.91 | 11.91 | 13.28 | 13.23 | 13.19 | 13.19 | 13.19 | 14.69 | 14.64 | 14.60 | 14.60 | 14.59 | 16.24 | 16.17 | 16.13 | 16.13 | 16.13 |
|         | HI PR | 261   | 258   | 256   | 256   | 255   | 303   | 300   | 297   | 296   | 296   | 349   | 345   | 342   | 341   | 341   | 398   | 394   | 391   | 391   | 391   | 452   | 447   | 444   | 444   | 444   |
|         | LO PR | 159   | 146   | 136   | 134   | 132   | 161   | 148   | 138   | 136   | 135   | 163   | 150   | 140   | 138   | 138   | 165   | 152   | 142   | 142   | 142   | 167   | 154   | 144   | 145   | 145   |
| 1350    | MBh†  | 43.29   | 39.29 | 36.45 | 35.95 | 35.81 | 41.24 | 37.41 | 34.66 | 34.37 | 34.38 | 39.08 | 35.41 | 32.79 | 32.84 | 32.85 | 36.79 | 33.30 | 30.81 | 31.22 | 31.22 | 34.31 | 31.03 | 28.68 | 29.45 | 29.45 |
|         | S/T‡  | 0.54  | 0.76  | 0.79  | 1.00  | 1.00  | 0.55  | 0.78  | 0.81  | 1.00  | 1.00  | 0.56  | 0.80  | 0.83  | 1.00  | 1.00  | 0.57  | 0.82  | 0.85  | 1.00  | 1.00  | 0.59  | 0.85  | 0.88  | 1.00  | 1.00  |
|         | AMPS* | 11.13   | 11.07 | 11.03 | 11.03 | 11.03 | 12.28 | 12.22 | 12.18 | 12.18 | 12.18 | 13.55 | 13.50 | 13.46 | 13.46 | 13.46 | 14.96 | 14.91 | 14.86 | 14.87 | 14.87 | 16.50 | 16.44 | 16.39 | 16.41 | 16.41 |
|         | HI PR | 262   | 259   | 257   | 256   | 256   | 304   | 300   | 298   | 297   | 297   | 349   | 345   | 342   | 343   | 343   | 399   | 395   | 391   | 392   | 392   | 453   | 448   | 445   | 446   | 446   |
|         | LO PR | 161   | 148   | 138   | 137   | 136   | 163   | 150   | 140   | 139   | 139   | 165   | 152   | 142   | 143   | 143   | 167   | 154   | 144   | 146   | 146   | 170   | 156   | 146   | 150   | 150   |

| HEATING |       | 36 Size Outdoor With FS(M,U)4X42**** Indoor Heating |       |       |       |       |       |       |       |       |       |       |       |       |       |       |       |       |       |       |       |       |       |       |       |  |    |  |  |  |  |    |  |  |  |  |    |  |  |  |  |
|---------|-------|---|-------|-------|-------|-------|-------|-------|-------|-------|-------|-------|-------|-------|-------|-------|-------|-------|-------|-------|-------|-------|-------|-------|-------|--|----|--|--|--|--|----|--|--|--|--|----|--|--|--|--|
|         |       | Outdoor Ambient Temperature – Degrees F, Dry Bulb   |       |       |       |       |       |       |       |       |       |       |       |       |       |       |       |       |       |       |       |       |       |       |       |  |    |  |  |  |  |    |  |  |  |  |    |  |  |  |  |
|         |       | -3  |       |       |       |       | 7     |       |       |       |       | 17    |       |       |       |       | 27    |       |       |       |       | 37    |       |       |       |  | 47 |  |  |  |  | 57 |  |  |  |  | 67 |  |  |  |  |
|         |       | Entering Indoor Temperature – Degrees F, Dry Bulb   |       |       |       |       |       |       |       |       |       |       |       |       |       |       |       |       |       |       |       |       |       |       |       |  |    |  |  |  |  |    |  |  |  |  |    |  |  |  |  |
| CFM     |       | 65  | 70    | 75    | 65    | 70    | 75    | 65    | 70    | 75    | 65    | 70    | 75    | 65    | 70    | 75    | 65    | 70    | 75    | 65    | 70    | 75    | 65    | 70    | 75    |  |    |  |  |  |  |    |  |  |  |  |    |  |  |  |  |
| 1050    | MBh†  | 14.10   | 13.65 | 13.16 | 17.58 | 17.17 | 16.73 | 21.40 | 20.94 | 20.50 | 25.78 | 25.30 | 24.75 | 30.60 | 30.08 | 29.54 | 36.09 | 35.48 | 34.87 | 41.58 | 41.19 | 40.74 | 45.62 | 45.99 | 45.48 |  |    |  |  |  |  |    |  |  |  |  |    |  |  |  |  |
|         | T/R   | 14.00   | 13.70 | 13.30 | 17.60 | 17.30 | 17.00 | 21.50 | 21.30 | 21.00 | 26.20 | 25.90 | 25.60 | 31.40 | 31.10 | 30.80 | 37.40 | 37.10 | 36.70 | 43.60 | 43.50 | 43.40 | 48.20 | 49.10 | 48.90 |  |    |  |  |  |  |    |  |  |  |  |    |  |  |  |  |
|         | AMPS* | 9.40  | 9.77  | 10.13 | 9.84  | 10.27 | 10.69 | 10.33 | 10.78 | 11.25 | 10.92 | 11.41 | 11.89 | 11.62 | 12.13 | 12.66 | 12.41 | 13.04 | 13.59 | 13.23 | 13.82 | 14.43 | 13.91 | 14.67 | 15.29 |  |    |  |  |  |  |    |  |  |  |  |    |  |  |  |  |
|         | HI PR | 232   | 248   | 265   | 245   | 263   | 281   | 263   | 280   | 299   | 285   | 303   | 322   | 313   | 331   | 351   | 344   | 367   | 387   | 378   | 399   | 422   | 406   | 434   | 456   |  |    |  |  |  |  |    |  |  |  |  |    |  |  |  |  |
|         | LO PR | 36  | 37    | 37    | 47    | 47    | 48    | 59    | 60    | 60    | 73    | 74    | 74    | 89    | 89    | 90    | 106   | 107   | 107   | 123   | 124   | 126   | 135   | 139   | 140   |  |    |  |  |  |  |    |  |  |  |  |    |  |  |  |  |
| 1200    | MBh†  | 14.39   | 13.94 | 13.46 | 17.89 | 17.49 | 17.05 | 21.77 | 21.31 | 20.85 | 26.18 | 25.71 | 25.24 | 31.06 | 30.54 | 30.00 | 36.41 | 36.00 | 35.41 | 40.96 | 41.26 | 40.90 | 42.71 | 43.37 | 44.25 |  |    |  |  |  |  |    |  |  |  |  |    |  |  |  |  |
|         | T/R   | 12.50   | 12.20 | 11.90 | 15.60 | 15.40 | 15.10 | 19.10 | 18.90 | 18.60 | 23.10 | 22.90 | 22.70 | 27.70 | 27.40 | 27.20 | 32.70 | 32.70 | 32.40 | 37.10 | 37.80 | 37.80 | 38.80 | 39.80 | 41.10 |  |    |  |  |  |  |    |  |  |  |  |    |  |  |  |  |
|         | AMPS* | 9.55  | 9.92  | 10.29 | 9.95  | 10.37 | 10.80 | 10.40 | 10.84 | 11.31 | 10.95 | 11.43 | 11.93 | 11.62 | 12.11 | 12.63 | 12.26 | 12.82 | 13.44 | 12.99 | 13.66 | 14.24 | 13.19 | 13.93 | 14.77 |  |    |  |  |  |  |    |  |  |  |  |    |  |  |  |  |
|         | HI PR | 227   | 244   | 261   | 240   | 257   | 275   | 256   | 273   | 291   | 277   | 295   | 313   | 303   | 322   | 341   | 330   | 350   | 373   | 360   | 385   | 406   | 368   | 396   | 427   |  |    |  |  |  |  |    |  |  |  |  |    |  |  |  |  |
|         | LO PR | 36  | 36    | 37    | 47    | 47    | 48    | 59    | 60    | 60    | 73    | 74    | 74    | 89    | 89    | 89    | 105   | 106   | 107   | 119   | 123   | 124   | 124   | 129   | 134   |  |    |  |  |  |  |    |  |  |  |  |    |  |  |  |  |
| 1350    | MBh†  | 14.66   | 14.21 | 13.73 | 18.17 | 17.77 | 17.34 | 22.09 | 21.63 | 21.16 | 26.52 | 26.05 | 25.59 | 31.43 | 30.90 | 30.38 | 36.44 | 36.14 | 35.78 | 39.13 | 39.97 | 40.91 | 40.35 | 41.56 | 42.26 |  |    |  |  |  |  |    |  |  |  |  |    |  |  |  |  |
|         | T/R   | 11.30   | 11.00 | 10.70 | 14.00 | 13.80 | 13.60 | 17.20 | 17.00 | 16.70 | 20.70 | 20.60 | 20.40 | 24.80 | 24.60 | 24.30 | 28.90 | 28.90 | 28.90 | 31.20 | 32.20 | 33.30 | 32.20 | 33.60 | 34.50 |  |    |  |  |  |  |    |  |  |  |  |    |  |  |  |  |
|         | AMPS* | 9.72  | 10.09 | 10.47 | 10.08 | 10.51 | 10.94 | 10.51 | 10.95 | 11.41 | 11.04 | 11.51 | 12.00 | 11.70 | 12.18 | 12.68 | 12.29 | 12.81 | 13.36 | 12.67 | 13.41 | 14.21 | 12.79 | 13.59 | 14.33 |  |    |  |  |  |  |    |  |  |  |  |    |  |  |  |  |
|         | HI PR | 224   | 240   | 257   | 235   | 252   | 270   | 250   | 268   | 286   | 271   | 288   | 307   | 297   | 315   | 333   | 322   | 341   | 361   | 338   | 366   | 396   | 343   | 373   | 401   |  |    |  |  |  |  |    |  |  |  |  |    |  |  |  |  |
|         | LO PR | 36  | 36    | 37    | 47    | 47    | 47    | 59    | 60    | 60    | 73    | 73    | 74    | 89    | 89    | 89    | 104   | 105   | 106   | 112   | 117   | 123   | 116   | 122   | 126   |  |    |  |  |  |  |    |  |  |  |  |    |  |  |  |  |

| COOLING |       | 42 Size Outdoor With FS(M,U)4X48**** Indoor Cooling |       |       |       |       |       |       |       |       |       |       |       |       |       |       |       |       |       |       |       |       |       |       |       |       |
|---------|-------|---|-------|-------|-------|-------|-------|-------|-------|-------|-------|-------|-------|-------|-------|-------|-------|-------|-------|-------|-------|-------|-------|-------|-------|-------|
|         |       | Outdoor Ambient Temperature – Degrees F, Dry Bulb   |       |       |       |       |       |       |       |       |       |       |       |       |       |       |       |       |       |       |       |       |       |       |       |       |
|         |       | 75  |       |       |       |       | 85    |       |       |       |       | 95    |       |       |       |       | 105   |       |       |       |       | 115   |       |       |       |       |
|         |       | Entering Indoor Temperature – Degrees F, Wet Bulb   |       |       |       |       |       |       |       |       |       |       |       |       |       |       |       |       |       |       |       |       |       |       |       |       |
| CFM     |       | 72  | 67    | 63††  | 62    | 57    | 72    | 67    | 63††  | 62    | 57    | 72    | 67    | 63††  | 62    | 57    | 72    | 67    | 63††  | 62    | 57    | 72    | 67    | 63††  | 62    | 57    |
| 1225    | MBh†  | 49.78   | 45.61 | 42.50 | 41.67 | 40.18 | 47.27 | 43.32 | 40.37 | 39.60 | 38.53 | 44.62 | 40.92 | 38.16 | 37.46 | 36.80 | 41.90 | 38.44 | 35.87 | 35.26 | 34.98 | 39.03 | 35.81 | 33.44 | 33.04 | 33.03 |
|         | S/T‡  | 0.50  | 0.67  | 0.70  | 0.88  | 1.00  | 0.50  | 0.69  | 0.71  | 0.90  | 1.00  | 0.51  | 0.70  | 0.73  | 0.93  | 1.00  | 0.52  | 0.72  | 0.75  | 0.95  | 1.00  | 0.53  | 0.75  | 0.77  | 1.00  | 1.00  |
|         | AMPS* | 11.60   | 12.02 | 12.30 | 12.36 | 12.48 | 13.36 | 13.71 | 13.94 | 13.98 | 14.05 | 15.16 | 15.44 | 15.62 | 15.65 | 15.68 | 17.01 | 17.23 | 17.35 | 17.37 | 17.38 | 18.91 | 19.06 | 19.13 | 19.13 | 19.13 |
|         | HI PR | 278   | 274   | 270   | 270   | 268   | 320   | 316   | 312   | 311   | 310   | 366   | 362   | 358   | 357   | 356   | 416   | 411   | 408   | 407   | 406   | 471   | 466   | 462   | 461   | 461   |
| 1400    | LO PR | 157   | 143   | 133   | 131   | 126   | 159   | 145   | 135   | 133   | 130   | 161   | 148   | 137   | 135   | 133   | 164   | 150   | 140   | 138   | 137   | 167   | 153   | 142   | 141   | 141   |
|         | MBh†  | 50.58   | 46.40 | 43.29 | 42.51 | 41.75 | 47.96 | 44.01 | 41.07 | 40.38 | 39.98 | 45.19 | 41.50 | 38.75 | 38.20 | 38.12 | 42.37 | 38.92 | 36.36 | 36.17 | 36.17 | 39.38 | 36.19 | 33.84 | 34.07 | 34.08 |
|         | S/T‡  | 0.51  | 0.70  | 0.73  | 0.93  | 1.00  | 0.52  | 0.72  | 0.75  | 0.95  | 1.00  | 0.53  | 0.74  | 0.76  | 0.99  | 1.00  | 0.54  | 0.76  | 0.79  | 1.00  | 1.00  | 0.55  | 0.79  | 0.81  | 1.00  | 1.00  |
|         | AMPS* | 11.79   | 12.22 | 12.52 | 12.57 | 12.64 | 13.56 | 13.93 | 14.18 | 14.21 | 14.24 | 15.38 | 15.69 | 15.88 | 15.90 | 15.90 | 17.25 | 17.49 | 17.63 | 17.63 | 17.63 | 19.17 | 19.34 | 19.42 | 19.41 | 19.41 |
| 1575    | LO PR | 279   | 275   | 271   | 271   | 270   | 321   | 317   | 313   | 313   | 312   | 367   | 363   | 359   | 358   | 358   | 417   | 413   | 409   | 409   | 409   | 471   | 467   | 463   | 463   | 463   |
|         | MBh†  | 51.16   | 46.98 | 43.86 | 43.24 | 43.04 | 48.45 | 44.49 | 41.56 | 41.16 | 41.17 | 45.59 | 41.90 | 39.17 | 39.19 | 39.19 | 42.68 | 39.24 | 36.70 | 37.12 | 37.12 | 39.61 | 36.44 | 34.11 | 34.90 | 34.90 |
|         | S/T‡  | 0.53  | 0.73  | 0.76  | 0.96  | 1.00  | 0.53  | 0.75  | 0.78  | 1.00  | 1.00  | 0.55  | 0.77  | 0.80  | 1.00  | 1.00  | 0.56  | 0.80  | 0.82  | 1.00  | 1.00  | 0.57  | 0.83  | 0.85  | 1.00  | 1.00  |
|         | AMPS* | 11.99   | 12.44 | 12.75 | 12.79 | 12.81 | 13.78 | 14.17 | 14.42 | 14.44 | 14.44 | 15.62 | 15.94 | 16.14 | 16.13 | 16.13 | 17.51 | 17.76 | 17.91 | 17.88 | 17.87 | 19.44 | 19.62 | 19.71 | 19.68 | 19.68 |
| LO PR   | HI PR | 279   | 275   | 272   | 272   | 272   | 322   | 318   | 314   | 314   | 314   | 368   | 363   | 360   | 360   | 360   | 418   | 413   | 410   | 410   | 410   | 472   | 467   | 464   | 465   | 465   |
|         | LO PR | 163   | 149   | 139   | 138   | 137   | 165   | 151   | 141   | 140   | 140   | 167   | 153   | 143   | 144   | 144   | 170   | 155   | 145   | 147   | 147   | 172   | 158   | 147   | 151   | 151   |

| HEATING |       | 42 Size Outdoor With FS(M,U)4X48**** Indoor Heating |       |       |       |       |       |       |       |       |       |       |       |       |       |       |       |       |       |       |       |       |       |       |       |  |    |  |  |  |  |    |  |  |  |  |    |  |  |  |  |
|---------|-------|---|-------|-------|-------|-------|-------|-------|-------|-------|-------|-------|-------|-------|-------|-------|-------|-------|-------|-------|-------|-------|-------|-------|-------|--|----|--|--|--|--|----|--|--|--|--|----|--|--|--|--|
|         |       | Outdoor Ambient Temperature – Degrees F, Dry Bulb   |       |       |       |       |       |       |       |       |       |       |       |       |       |       |       |       |       |       |       |       |       |       |       |  |    |  |  |  |  |    |  |  |  |  |    |  |  |  |  |
|         |       | -3  |       |       |       |       | 7     |       |       |       |       | 17    |       |       |       |       | 27    |       |       |       |       | 37    |       |       |       |  | 47 |  |  |  |  | 57 |  |  |  |  | 67 |  |  |  |  |
|         |       | Entering Indoor Temperature – Degrees F, Dry Bulb   |       |       |       |       |       |       |       |       |       |       |       |       |       |       |       |       |       |       |       |       |       |       |       |  |    |  |  |  |  |    |  |  |  |  |    |  |  |  |  |
| CFM     |       | 65  | 70    | 75    | 65    | 70    | 75    | 65    | 70    | 75    | 65    | 70    | 75    | 65    | 70    | 75    | 65    | 70    | 75    | 65    | 70    | 75    | 65    | 70    | 75    |  |    |  |  |  |  |    |  |  |  |  |    |  |  |  |  |
| 1225    | MBh†  | 17.76   | 17.18 | 16.56 | 21.85 | 21.30 | 20.73 | 26.23 | 25.71 | 25.16 | 30.88 | 30.38 | 29.85 | 36.03 | 35.44 | 34.84 | 41.98 | 41.26 | 40.61 | 48.42 | 47.80 | 47.16 | 55.03 | 54.17 | 53.52 |  |    |  |  |  |  |    |  |  |  |  |    |  |  |  |  |
|         | T/R   | 14.80   | 14.40 | 14.00 | 18.30 | 18.00 | 17.70 | 22.10 | 21.90 | 21.60 | 26.30 | 26.10 | 25.80 | 30.90 | 30.60 | 30.40 | 36.40 | 36.00 | 35.80 | 42.40 | 42.20 | 42.00 | 48.70 | 48.30 | 48.10 |  |    |  |  |  |  |    |  |  |  |  |    |  |  |  |  |
|         | AMPS* | 12.39   | 12.75 | 13.11 | 12.88 | 13.30 | 13.72 | 13.34 | 13.82 | 14.30 | 13.80 | 14.34 | 14.89 | 14.28 | 14.87 | 15.47 | 14.82 | 15.52 | 16.17 | 15.26 | 15.98 | 16.71 | 15.93 | 16.68 |       |  |    |  |  |  |  |    |  |  |  |  |    |  |  |  |  |
|         | HI PR | 231   | 248   | 264   | 245   | 262   | 279   | 260   | 278   | 296   | 278   | 297   | 316   | 300   | 319   | 339   | 325   | 346   | 367   | 351   | 372   | 394   | 384   | 405   |       |  |    |  |  |  |  |    |  |  |  |  |    |  |  |  |  |
| 1400    | LO PR | 36  | 36    | 36    | 46    | 46    | 47    | 58    | 58    | 59    | 72    | 72    | 72    | 86    | 87    | 87    | 103   | 103   | 104   | 121   | 122   | 122   | 139   | 140   |       |  |    |  |  |  |  |    |  |  |  |  |    |  |  |  |  |
|         | MBh†  | 18.12   | 17.55 | 16.93 | 22.24 | 21.70 | 21.13 | 26.65 | 26.15 | 25.60 | 31.34 | 30.85 | 30.33 | 36.69 | 36.00 | 35.40 | 42.67 | 42.00 | 41.30 | 48.81 | 48.25 | 47.65 | 53.30 | 53.55 | 53.36 |  |    |  |  |  |  |    |  |  |  |  |    |  |  |  |  |
|         | T/R   | 13.20   | 12.90 | 12.50 | 16.20 | 16.00 | 15.70 | 19.60 | 19.40 | 19.10 | 23.20 | 23.00 | 22.80 | 27.40 | 27.10 | 26.80 | 32.10 | 31.90 | 31.60 | 37.00 | 36.90 | 36.80 | 40.70 | 41.30 |       |  |    |  |  |  |  |    |  |  |  |  |    |  |  |  |  |
|         | AMPS* | 12.59   | 12.95 | 13.31 | 13.03 | 13.45 | 13.88 | 13.44 | 13.92 | 14.40 | 13.82 | 14.37 | 14.92 | 14.26 | 14.83 | 15.42 | 14.58 | 15.29 | 16.01 | 15.00 | 15.71 | 16.43 | 15.33 | 16.17 |       |  |    |  |  |  |  |    |  |  |  |  |    |  |  |  |  |
| 1575    | HI PR | 227   | 243   | 260   | 239   | 256   | 274   | 253   | 270   | 289   | 269   | 288   | 307   | 289   | 308   | 327   | 309   | 330   | 352   | 334   | 355   | 376   | 353   | 379   |       |  |    |  |  |  |  |    |  |  |  |  |    |  |  |  |  |
|         | LO PR | 35  | 36    | 36    | 46    | 46    | 47    | 58    | 58    | 59    | 71    | 72    | 72    | 86    | 87    | 87    | 103   | 103   | 104   | 119   | 120   | 121   | 131   | 135   |       |  |    |  |  |  |  |    |  |  |  |  |    |  |  |  |  |
|         | MBh†  | 18.45   | 17.88 | 17.26 | 22.59 | 22.06 | 21.49 | 27.02 | 26.53 | 25.99 | 31.74 | 31.25 | 30.74 | 37.24 | 36.49 | 35.88 | 43.08 | 42.56 | 41.89 | 48.99 | 48.51 | 47.98 | 51.11 | 51.87 |       |  |    |  |  |  |  |    |  |  |  |  |    |  |  |  |  |
|         | T/R   | 11.90   | 11.60 | 11.30 | 14.60 | 14.40 | 14.20 | 17.60 | 17.40 | 17.20 | 20.80 | 20.60 | 20.50 | 24.60 | 24.30 | 24.10 | 28.60 | 28.50 | 28.30 | 32.80 | 32.80 | 32.70 | 34.30 | 35.20 |       |  |    |  |  |  |  |    |  |  |  |  |    |  |  |  |  |
| LO PR   | AMPS* | 12.81   | 13.17 | 13.54 | 13.21 | 13.64 | 14.07 | 13.58 | 14.06 | 14.55 | 13.91 | 14.46 | 15.01 | 14.30 | 14.86 | 15.46 | 14.52 | 15.18 | 15.89 | 14.88 | 15.59 | 16.31 | 14.96 | 16.65 |       |  |    |  |  |  |  |    |  |  |  |  |    |  |  |  |  |
|         | HI PR | 224   | 240   | 257   | 234   | 251   | 269   | 247   | 265   | 283   | 262   | 280   | 299   | 281   | 299   | 319   | 298   | 318   | 339   | 321   | 342   | 363   | 328   | 354   |       |  |    |  |  |  |  |    |  |  |  |  |    |  |  |  |  |
| LO PR   | 35    | 36  | 36    | 46    | 46    | 46    | 58    | 58    | 58    | 71    | 72    | 72    | 86    | 86    | 87    | 102   | 103   | 103   | 118   | 119   | 120   | 123   | 128   |       |       |  |    |  |  |  |  |    |  |  |  |  |    |  |  |  |  |

| COOLING |       | 48 Size Outdoor With FS(M,U)4X60**** Indoor Cooling |       |       |       |       |       |       |       |       |       |       |       |       |       |       |       |       |       |       |       |       |       |       |       |       |
|---------|-------|---|-------|-------|-------|-------|-------|-------|-------|-------|-------|-------|-------|-------|-------|-------|-------|-------|-------|-------|-------|-------|-------|-------|-------|-------|
|         |       | Outdoor Ambient Temperature – Degrees F, Dry Bulb   |       |       |       |       |       |       |       |       |       |       |       |       |       |       |       |       |       |       |       |       |       |       |       |       |
|         |       | 75  |       |       |       |       | 85    |       |       |       |       | 95    |       |       |       |       | 105   |       |       |       |       | 115   |       |       |       |       |
|         |       | Entering Indoor Temperature – Degrees F, Wet Bulb   |       |       |       |       |       |       |       |       |       |       |       |       |       |       |       |       |       |       |       |       |       |       |       |       |
| CFM     |       | 72  | 67    | 63††  | 62    | 57    | 72    | 67    | 63††  | 62    | 57    | 72    | 67    | 63††  | 62    | 57    | 72    | 67    | 63††  | 62    | 57    | 72    | 67    | 63††  | 62    | 57    |
| 1400    | MBh†  | 56.53   | 51.42 | 47.69 | 46.71 | 45.05 | 53.78 | 48.87 | 45.30 | 44.38 | 43.21 | 50.91 | 46.24 | 42.84 | 41.99 | 41.29 | 47.93 | 43.50 | 40.28 | 39.54 | 39.28 | 44.78 | 40.62 | 37.59 | 37.15 | 37.15 |
|         | S/T‡  | 0.50  | 0.68  | 0.71  | 0.90  | 1.00  | 0.51  | 0.70  | 0.73  | 0.92  | 1.00  | 0.52  | 0.71  | 0.74  | 0.94  | 1.00  | 0.52  | 0.73  | 0.76  | 0.97  | 1.00  | 0.54  | 0.76  | 0.78  | 1.00  | 1.00  |
|         | AMPS* | 13.65   | 13.73 | 13.77 | 13.78 | 13.79 | 15.46 | 15.50 | 15.52 | 15.52 | 15.52 | 17.40 | 17.41 | 17.41 | 17.40 | 17.40 | 19.49 | 19.47 | 19.44 | 19.43 | 19.42 | 21.72 | 21.67 | 21.61 | 21.60 | 21.60 |
|         | HI PR | 284   | 279   | 275   | 274   | 273   | 327   | 321   | 317   | 316   | 315   | 373   | 368   | 363   | 362   | 361   | 424   | 418   | 413   | 412   | 412   | 479   | 473   | 468   | 467   | 467   |
| 1600    | LO PR | 157   | 143   | 134   | 131   | 127   | 159   | 146   | 136   | 133   | 130   | 161   | 148   | 138   | 136   | 134   | 164   | 150   | 140   | 138   | 137   | 166   | 153   | 142   | 141   | 141   |
|         | MBh†  | 57.58   | 52.42 | 48.65 | 47.72 | 46.91 | 54.71 | 49.75 | 46.15 | 45.32 | 44.94 | 51.72 | 47.00 | 43.57 | 42.91 | 42.89 | 48.62 | 44.15 | 40.91 | 40.75 | 40.75 | 45.35 | 41.15 | 38.12 | 38.47 | 38.47 |
|         | S/T‡  | 0.52  | 0.71  | 0.74  | 0.94  | 1.00  | 0.52  | 0.73  | 0.76  | 0.97  | 1.00  | 0.53  | 0.75  | 0.78  | 1.00  | 1.00  | 0.54  | 0.77  | 0.80  | 1.00  | 1.00  | 0.56  | 0.80  | 0.82  | 1.00  | 1.00  |
|         | AMPS* | 13.99   | 14.06 | 14.11 | 14.12 | 14.13 | 15.80 | 15.85 | 15.87 | 15.87 | 15.87 | 17.75 | 17.77 | 17.77 | 17.76 | 17.76 | 19.85 | 19.83 | 19.80 | 19.80 | 19.80 | 22.08 | 22.04 | 21.98 | 21.99 | 21.99 |
| 1800    | HI PR | 285   | 280   | 277   | 276   | 275   | 328   | 323   | 318   | 318   | 317   | 375   | 369   | 364   | 364   | 364   | 425   | 419   | 414   | 414   | 414   | 480   | 474   | 469   | 470   | 470   |
|         | LO PR | 160   | 147   | 137   | 135   | 133   | 162   | 149   | 139   | 137   | 136   | 165   | 151   | 141   | 139   | 139   | 167   | 153   | 143   | 143   | 143   | 169   | 155   | 145   | 147   | 147   |
|         | MBh†  | 58.34   | 53.14 | 49.35 | 48.61 | 48.46 | 55.39 | 50.39 | 46.76 | 46.37 | 46.37 | 52.30 | 47.55 | 44.11 | 44.21 | 44.21 | 49.11 | 44.61 | 41.36 | 41.95 | 41.95 | 45.74 | 41.53 | 38.49 | 39.55 | 39.55 |
|         | S/T‡  | 0.53  | 0.74  | 0.77  | 0.99  | 1.00  | 0.54  | 0.76  | 0.79  | 1.00  | 1.00  | 0.55  | 0.78  | 0.81  | 1.00  | 1.00  | 0.56  | 0.81  | 0.84  | 1.00  | 1.00  | 0.58  | 0.84  | 0.87  | 1.00  | 1.00  |
| 1800    | AMPS* | 14.33   | 14.41 | 14.46 | 14.46 | 14.46 | 16.15 | 16.20 | 16.22 | 16.22 | 16.22 | 18.11 | 18.13 | 18.13 | 18.13 | 20.20 | 20.19 | 20.17 | 20.17 | 20.17 | 22.44 | 22.40 | 22.35 | 22.37 | 22.37 |       |
|         | HI PR | 286   | 281   | 278   | 277   | 277   | 329   | 324   | 320   | 319   | 319   | 376   | 370   | 365   | 366   | 366   | 427   | 420   | 416   | 417   | 417   | 481   | 475   | 470   | 472   | 472   |
|         | LO PR | 163   | 150   | 139   | 138   | 138   | 165   | 151   | 141   | 141   | 141   | 167   | 153   | 143   | 144   | 144   | 169   | 156   | 145   | 147   | 147   | 172   | 158   | 147   | 151   | 151   |

| HEATING |       | 48 Size Outdoor With FS(M,U)4X60**** Indoor Heating |       |       |       |       |       |       |       |       |       |       |       |       |       |       |       |       |       |       |       |       |       |       |       |  |    |  |  |  |  |    |  |  |  |  |    |  |  |  |  |
|---------|-------|---|-------|-------|-------|-------|-------|-------|-------|-------|-------|-------|-------|-------|-------|-------|-------|-------|-------|-------|-------|-------|-------|-------|-------|--|----|--|--|--|--|----|--|--|--|--|----|--|--|--|--|
|         |       | Outdoor Ambient Temperature – Degrees F, Dry Bulb   |       |       |       |       |       |       |       |       |       |       |       |       |       |       |       |       |       |       |       |       |       |       |       |  |    |  |  |  |  |    |  |  |  |  |    |  |  |  |  |
|         |       | -3  |       |       |       |       | 7     |       |       |       |       | 17    |       |       |       |       | 27    |       |       |       |       | 37    |       |       |       |  | 47 |  |  |  |  | 57 |  |  |  |  | 67 |  |  |  |  |
|         |       | Entering Indoor Temperature – Degrees F, Dry Bulb   |       |       |       |       |       |       |       |       |       |       |       |       |       |       |       |       |       |       |       |       |       |       |       |  |    |  |  |  |  |    |  |  |  |  |    |  |  |  |  |
| CFM     |       | 65  | 70    | 75    | 65    | 70    | 75    | 65    | 70    | 75    | 65    | 70    | 75    | 65    | 70    | 75    | 65    | 70    | 75    | 65    | 70    | 75    | 65    | 70    | 75    |  |    |  |  |  |  |    |  |  |  |  |    |  |  |  |  |
| 1400    | MBh†  | 20.09   | 19.53 | 18.93 | 24.72 | 24.19 | 23.64 | 29.71 | 29.20 | 28.66 | 35.10 | 34.59 | 34.06 | 41.16 | 40.48 | 39.84 | 47.99 | 47.22 | 46.50 | 55.77 | 55.05 | 54.24 | 63.68 | 62.85 | 62.07 |  |    |  |  |  |  |    |  |  |  |  |    |  |  |  |  |
|         | T/R   | 14.70   | 14.40 | 14.10 | 18.20 | 18.00 | 17.70 | 22.00 | 21.80 | 21.60 | 26.20 | 26.00 | 25.90 | 31.00 | 30.70 | 30.50 | 36.50 | 36.20 | 35.90 | 42.90 | 42.70 | 42.40 | 49.50 | 49.30 | 49.10 |  |    |  |  |  |  |    |  |  |  |  |    |  |  |  |  |
|         | AMPS* | 13.26   | 13.85 | 14.44 | 13.78 | 14.41 | 15.06 | 14.32 | 15.00 | 15.70 | 14.91 | 15.64 | 16.40 | 15.59 | 16.35 | 17.15 | 16.41 | 17.23 | 18.07 | 17.14 | 18.02 | 18.94 | 18.20 | 19.11 | 20.06 |  |    |  |  |  |  |    |  |  |  |  |    |  |  |  |  |
|         | HI PR | 230   | 247   | 264   | 243   | 260   | 278   | 258   | 276   | 295   | 276   | 295   | 314   | 297   | 316   | 336   | 323   | 343   | 364   | 348   | 370   | 392   | 382   | 404   | 427   |  |    |  |  |  |  |    |  |  |  |  |    |  |  |  |  |
| 1600    | LO PR | 37  | 37    | 37    | 48    | 48    | 48    | 60    | 60    | 61    | 74    | 74    | 74    | 89    | 89    | 90    | 105   | 106   | 106   | 124   | 125   | 125   | 142   | 144   | 145   |  |    |  |  |  |  |    |  |  |  |  |    |  |  |  |  |
|         | MBh†  | 20.49   | 19.93 | 19.34 | 25.15 | 24.63 | 24.08 | 30.17 | 29.67 | 29.14 | 35.61 | 35.11 | 34.59 | 41.82 | 41.11 | 40.47 | 48.81 | 48.00 | 47.25 | 56.16 | 55.53 | 54.85 | 63.43 | 63.20 | 62.50 |  |    |  |  |  |  |    |  |  |  |  |    |  |  |  |  |
|         | T/R   | 13.10   | 12.80 | 12.50 | 16.10 | 15.90 | 15.70 | 19.50 | 19.30 | 19.10 | 23.10 | 23.00 | 22.90 | 27.40 | 27.10 | 26.90 | 32.20 | 32.00 | 31.70 | 37.40 | 37.30 | 37.20 | 42.70 | 42.90 | 42.80 |  |    |  |  |  |  |    |  |  |  |  |    |  |  |  |  |
|         | AMPS* | 13.47   | 14.05 | 14.65 | 13.92 | 14.56 | 15.21 | 14.39 | 15.07 | 15.77 | 14.90 | 15.64 | 16.39 | 15.51 | 16.25 | 17.04 | 16.10 | 16.99 | 17.86 | 16.79 | 17.65 | 18.54 | 17.61 | 18.58 | 19.52 |  |    |  |  |  |  |    |  |  |  |  |    |  |  |  |  |
| 1800    | HI PR | 226   | 242   | 259   | 237   | 254   | 272   | 251   | 269   | 287   | 266   | 285   | 304   | 286   | 304   | 324   | 307   | 328   | 349   | 331   | 351   | 373   | 358   | 382   | 404   |  |    |  |  |  |  |    |  |  |  |  |    |  |  |  |  |
|         | LO PR | 37  | 37    | 37    | 48    | 48    | 48    | 60    | 60    | 60    | 73    | 74    | 74    | 88    | 89    | 89    | 105   | 106   | 106   | 122   | 123   | 124   | 139   | 141   | 142   |  |    |  |  |  |  |    |  |  |  |  |    |  |  |  |  |
|         | MBh†  | 20.86   | 20.30 | 19.71 | 25.54 | 25.02 | 24.47 | 30.59 | 30.09 | 29.57 | 36.08 | 35.57 | 35.05 | 42.36 | 41.86 | 41.01 | 49.32 | 48.68 | 47.91 | 56.22 | 55.71 | 55.15 | 59.94 | 60.99 | 61.67 |  |    |  |  |  |  |    |  |  |  |  |    |  |  |  |  |
|         | T/R   | 11.80   | 11.60 | 11.30 | 14.50 | 14.30 | 14.20 | 17.50 | 17.30 | 17.20 | 20.70 | 20.60 | 20.50 | 24.50 | 24.40 | 24.10 | 28.80 | 28.60 | 28.40 | 33.10 | 33.00 | 33.00 | 35.40 | 36.40 | 37.20 |  |    |  |  |  |  |    |  |  |  |  |    |  |  |  |  |
| 1800    | AMPS* | 13.71   | 14.29 | 14.90 | 14.12 | 14.75 | 15.41 | 14.54 | 15.21 | 15.91 | 14.99 | 15.72 | 16.47 | 15.53 | 16.30 | 17.05 | 15.99 | 16.81 | 17.69 | 16.63 | 17.48 | 18.35 | 16.93 | 18.00 | 19.08 |  |    |  |  |  |  |    |  |  |  |  |    |  |  |  |  |
|         | HI PR | 222   | 239   | 256   | 233   | 250   | 268   | 245   | 263   | 281   | 259   | 278   | 297   | 277   | 296   | 315   | 295   | 315   | 336   | 318   | 338   | 359   | 329   | 356   | 383   |  |    |  |  |  |  |    |  |  |  |  |    |  |  |  |  |
|         | LO PR | 37  | 37    | 37    | 48    | 48    | 48    | 60    | 60    | 60    | 73    | 74    | 74    | 88    | 89    | 89    | 104   | 105   | 106   | 120   | 122   | 123   | 129   | 134   | 138   |  |    |  |  |  |  |    |  |  |  |  |    |  |  |  |  |

| COOLING |       | 60 Size Outdoor With FEM4X60**** Indoor Cooling   |       |       |       |       |       |       |       |       |       |       |       |       |       |       |       |       |       |       |       |       |       |       |       |       |
|---------|-------|---|-------|-------|-------|-------|-------|-------|-------|-------|-------|-------|-------|-------|-------|-------|-------|-------|-------|-------|-------|-------|-------|-------|-------|-------|
|         |       | Outdoor Ambient Temperature – Degrees F, Dry Bulb |       |       |       |       |       |       |       |       |       |       |       |       |       |       |       |       |       |       |       |       |       |       |       |       |
|         |       | 75  |       |       |       |       | 85    |       |       |       |       | 95    |       |       |       |       | 105   |       |       |       |       | 115   |       |       |       |       |
|         |       | Entering Indoor Temperature – Degrees F, Wet Bulb |       |       |       |       |       |       |       |       |       |       |       |       |       |       |       |       |       |       |       |       |       |       |       |       |
| CFM     |       | 72  | 67    | 63††  | 62    | 57    | 72    | 67    | 63††  | 62    | 57    | 72    | 67    | 63††  | 62    | 57    | 72    | 67    | 63††  | 62    | 57    | 72    | 67    | 63††  | 62    | 57    |
| 1750    | MBh†  | 70.01   | 64.42 | 60.24 | 59.12 | 57.11 | 66.65 | 61.32 | 57.34 | 56.29 | 54.85 | 63.02 | 58.00 | 54.26 | 53.31 | 52.42 | 59.23 | 54.53 | 51.03 | 50.20 | 49.84 | 55.15 | 50.80 | 47.57 | 47.02 | 47.02 |
|         | S/T‡  | 0.52  | 0.70  | 0.72  | 0.91  | 1.00  | 0.52  | 0.71  | 0.74  | 0.93  | 1.00  | 0.53  | 0.73  | 0.75  | 0.95  | 1.00  | 0.54  | 0.75  | 0.77  | 0.98  | 1.00  | 0.55  | 0.77  | 0.80  | 1.00  | 1.00  |
|         | AMPS* | 18.13   | 17.86 | 17.65 | 17.60 | 17.50 | 20.07 | 19.80 | 19.58 | 19.53 | 19.46 | 22.20 | 21.93 | 21.71 | 21.66 | 21.61 | 24.53 | 24.26 | 24.04 | 24.00 | 23.97 | 27.05 | 26.79 | 26.57 | 26.54 | 26.54 |
|         | HI PR | 296   | 291   | 287   | 286   | 284   | 340   | 335   | 330   | 329   | 327   | 388   | 382   | 377   | 376   | 374   | 439   | 433   | 427   | 426   | 426   | 494   | 488   | 482   | 482   | 482   |
|         | LO PR | 155   | 142   | 132   | 129   | 125   | 157   | 144   | 134   | 132   | 128   | 160   | 146   | 136   | 134   | 132   | 162   | 148   | 138   | 136   | 135   | 165   | 151   | 141   | 140   | 140   |
| 2000    | MBh†  | 71.11   | 65.52 | 61.35 | 60.30 | 59.29 | 67.62 | 62.29 | 58.32 | 57.39 | 56.86 | 63.85 | 58.83 | 55.11 | 54.33 | 54.26 | 59.93 | 55.23 | 51.75 | 51.50 | 51.50 | 55.70 | 51.36 | 48.16 | 48.50 | 48.50 |
|         | S/T‡  | 0.53  | 0.73  | 0.75  | 0.95  | 1.00  | 0.54  | 0.74  | 0.77  | 0.97  | 1.00  | 0.55  | 0.76  | 0.79  | 1.00  | 1.00  | 0.56  | 0.79  | 0.81  | 1.00  | 1.00  | 0.57  | 0.81  | 0.84  | 1.00  | 1.00  |
|         | AMPS* | 18.51   | 18.24 | 18.02 | 17.98 | 17.93 | 20.45 | 20.17 | 19.96 | 19.91 | 19.89 | 22.57 | 22.30 | 22.08 | 22.05 | 22.04 | 24.90 | 24.63 | 24.41 | 24.40 | 24.40 | 27.41 | 27.15 | 26.94 | 26.97 | 26.97 |
|         | HI PR | 298   | 292   | 288   | 287   | 286   | 342   | 336   | 331   | 330   | 330   | 389   | 383   | 378   | 377   | 377   | 440   | 434   | 429   | 429   | 429   | 495   | 489   | 484   | 485   | 485   |
|         | LO PR | 159   | 145   | 135   | 133   | 131   | 161   | 147   | 137   | 135   | 134   | 163   | 149   | 139   | 137   | 137   | 165   | 151   | 141   | 141   | 141   | 168   | 154   | 143   | 145   | 145   |
| 2250    | MBh†  | 71.92   | 66.32 | 62.16 | 61.33 | 61.07 | 68.32 | 62.99 | 59.04 | 58.50 | 58.51 | 64.44 | 59.42 | 55.72 | 55.75 | 55.76 | 60.40 | 55.72 | 52.27 | 52.84 | 52.85 | 56.07 | 51.76 | 48.59 | 49.67 | 49.68 |
|         | S/T‡  | 0.55  | 0.76  | 0.78  | 0.99  | 1.00  | 0.56  | 0.78  | 0.80  | 1.00  | 1.00  | 0.57  | 0.80  | 0.82  | 1.00  | 1.00  | 0.58  | 0.82  | 0.85  | 1.00  | 1.00  | 0.60  | 0.86  | 0.88  | 1.00  | 1.00  |
|         | AMPS* | 18.88   | 18.60 | 18.38 | 18.35 | 18.34 | 20.81 | 20.53 | 20.32 | 20.30 | 20.30 | 22.93 | 22.66 | 22.44 | 22.45 | 22.45 | 25.25 | 24.98 | 24.77 | 24.81 | 24.81 | 27.76 | 27.50 | 27.29 | 27.37 | 27.37 |
|         | HI PR | 299   | 294   | 289   | 289   | 288   | 343   | 337   | 332   | 332   | 332   | 390   | 384   | 379   | 380   | 380   | 441   | 435   | 430   | 431   | 431   | 496   | 490   | 485   | 487   | 487   |
|         | LO PR | 161   | 148   | 137   | 136   | 135   | 163   | 150   | 139   | 138   | 138   | 166   | 152   | 141   | 142   | 142   | 168   | 154   | 143   | 146   | 146   | 170   | 156   | 145   | 150   | 150   |

| HEATING |       | 60 Size Outdoor With FEM4X60**** Indoor Heating   |       |       |       |       |       |       |       |       |       |       |       |       |       |       |       |       |       |       |       |       |       |       |       |    |  |  |  |    |  |  |  |
|---------|-------|---|-------|-------|-------|-------|-------|-------|-------|-------|-------|-------|-------|-------|-------|-------|-------|-------|-------|-------|-------|-------|-------|-------|-------|----|--|--|--|----|--|--|--|
|         |       | Outdoor Ambient Temperature – Degrees F, Dry Bulb |       |       |       |       |       |       |       |       |       |       |       |       |       |       |       |       |       |       |       |       |       |       |       |    |  |  |  |    |  |  |  |
|         |       | -3  |       |       |       | 7     |       |       |       | 17    |       |       |       | 27    |       |       |       | 37    |       |       |       | 47    |       |       |       | 57 |  |  |  | 67 |  |  |  |
|         |       | Entering Indoor Temperature – Degrees F, Dry Bulb |       |       |       |       |       |       |       |       |       |       |       |       |       |       |       |       |       |       |       |       |       |       |       |    |  |  |  |    |  |  |  |
| CFM     |       | 65  | 70    | 75    | 65    | 70    | 75    | 65    | 70    | 75    | 65    | 70    | 75    | 65    | 70    | 75    | 65    | 70    | 75    | 65    | 70    | 75    | 65    | 70    | 75    |    |  |  |  |    |  |  |  |
| 1750    | MBh†  | 24.88   | 24.16 | 23.38 | 30.75 | 30.09 | 29.39 | 37.05 | 36.42 | 35.75 | 43.79 | 43.15 | 42.50 | 51.61 | 50.65 | 49.83 | 60.33 | 59.50 | 58.64 | 69.11 | 68.33 | 67.45 | 78.57 | 77.63 | 76.66 |    |  |  |  |    |  |  |  |
|         | T/R   | 14.00   | 13.70 | 13.40 | 17.50 | 17.20 | 17.00 | 21.20 | 21.00 | 20.80 | 25.20 | 25.10 | 24.90 | 30.00 | 29.70 | 29.40 | 35.40 | 35.20 | 35.00 | 40.90 | 40.80 | 40.60 | 47.00 | 46.90 | 46.60 |    |  |  |  |    |  |  |  |
|         | AMPS* | 16.09   | 16.84 | 17.62 | 16.83 | 17.65 | 18.50 | 17.66 | 18.54 | 19.44 | 18.55 | 19.49 | 20.46 | 19.63 | 20.57 | 21.58 | 20.61 | 21.66 | 22.75 | 21.90 | 22.99 | 24.11 | 23.41 | 24.54 | 25.70 |    |  |  |  |    |  |  |  |
|         | HI PR | 231   | 247   | 264   | 244   | 261   | 279   | 259   | 277   | 296   | 277   | 295   | 315   | 299   | 318   | 338   | 320   | 341   | 362   | 347   | 369   | 391   | 379   | 401   | 424   |    |  |  |  |    |  |  |  |
|         | LO PR | 34  | 35    | 35    | 44    | 45    | 45    | 56    | 56    | 56    | 68    | 69    | 69    | 83    | 83    | 84    | 99    | 99    | 100   | 114   | 115   | 116   | 131   | 132   | 133   |    |  |  |  |    |  |  |  |
| 2000    | MBh†  | 25.29   | 24.57 | 23.80 | 31.19 | 30.54 | 29.84 | 37.53 | 36.90 | 36.25 | 44.33 | 43.69 | 43.04 | 52.30 | 51.41 | 50.52 | 60.75 | 60.02 | 59.29 | 69.26 | 68.58 | 67.85 | 74.68 | 75.19 | 75.35 |    |  |  |  |    |  |  |  |
|         | T/R   | 12.40   | 12.20 | 11.90 | 15.40 | 15.20 | 15.00 | 18.70 | 18.50 | 18.40 | 22.20 | 22.10 | 21.90 | 26.40 | 26.20 | 25.90 | 30.90 | 30.80 | 30.70 | 35.60 | 35.50 | 35.40 | 38.50 | 39.20 | 39.60 |    |  |  |  |    |  |  |  |
|         | AMPS* | 16.23   | 16.99 | 17.76 | 16.89 | 17.72 | 18.57 | 17.65 | 18.52 | 19.42 | 18.44 | 19.37 | 20.34 | 19.42 | 20.37 | 21.35 | 20.25 | 21.27 | 22.33 | 21.38 | 22.45 | 23.56 | 22.06 | 23.36 | 24.67 |    |  |  |  |    |  |  |  |
|         | HI PR | 226   | 243   | 260   | 238   | 255   | 273   | 252   | 270   | 288   | 268   | 286   | 306   | 288   | 307   | 326   | 306   | 326   | 347   | 330   | 351   | 373   | 345   | 371   | 397   |    |  |  |  |    |  |  |  |
|         | LO PR | 34  | 35    | 35    | 44    | 45    | 45    | 56    | 56    | 56    | 68    | 69    | 69    | 83    | 83    | 83    | 98    | 98    | 99    | 113   | 114   | 115   | 122   | 125   | 128   |    |  |  |  |    |  |  |  |
| 2250    | MBh†  | 25.66   | 24.94 | 24.17 | 31.57 | 30.94 | 30.24 | 37.94 | 37.34 | 36.68 | 44.81 | 44.16 | 43.51 | 52.97 | 52.11 | 51.12 | 60.91 | 60.31 | 59.62 | 68.67 | 68.57 | 67.94 | 71.04 | 72.04 | 72.73 |    |  |  |  |    |  |  |  |
|         | T/R   | 11.20   | 11.00 | 10.70 | 13.80 | 13.70 | 13.50 | 16.70 | 16.60 | 16.50 | 19.90 | 19.80 | 19.60 | 23.70 | 23.50 | 23.20 | 27.40 | 27.40 | 27.30 | 31.10 | 31.30 | 31.30 | 32.20 | 33.00 | 33.70 |    |  |  |  |    |  |  |  |
|         | AMPS* | 16.41   | 17.17 | 17.95 | 17.02 | 17.84 | 18.69 | 17.71 | 18.58 | 19.48 | 18.44 | 19.36 | 20.32 | 19.25 | 20.26 | 21.26 | 20.07 | 21.07 | 22.11 | 21.01 | 22.13 | 23.22 | 21.19 | 22.48 | 23.79 |    |  |  |  |    |  |  |  |
|         | HI PR | 223   | 239   | 256   | 234   | 251   | 269   | 246   | 264   | 282   | 261   | 279   | 299   | 278   | 298   | 318   | 296   | 316   | 336   | 316   | 338   | 360   | 320   | 346   | 372   |    |  |  |  |    |  |  |  |
|         | LO PR | 34  | 35    | 35    | 44    | 45    | 45    | 55    | 56    | 56    | 68    | 69    | 69    | 83    | 83    | 83    | 96    | 97    | 98    | 110   | 112   | 113   | 114   | 118   | 121   |    |  |  |  |    |  |  |  |

## COOLING Multiplying Factors for other Indoor Combinations

| Indoor Model         | Furnace Model | Capac. (MBh) | Power (AMPS) | Indoor Model | Furnace Model | Capac. (MBh) | Power (AMPS) | Indoor Model    | Furnace Model | Capac. (MBh) | Power (AMPS) |
|----------------------|---------------|--------------|--------------|--------------|---------------|--------------|--------------|-----------------|---------------|--------------|--------------|
| <b>(C,H,T),4H418</b> |               |              |              |              |               |              |              |                 |               |              |              |
| >FEM4X18****         |               | 1.00         | 1.00         | ED*4X24F**   | *9MPV075      | 1.03         | 0.99         | EHD4X24A**      | MV08B15**B*   | 1.01         | 0.96         |
| ED*4X18B**           | *8MPV050      | 1.00         | 1.00         | ED*4X24F**   |               | 0.99         | 1.09         | EHD4X24A**      |               | 1.01         | 1.10         |
| ED*4X18B**           | MV08B15**B*   | 0.98         | 0.94         | EHD4X24A**   | *8MPV050      | 1.02         | 0.98         | EMA4X24D**      |               | 0.99         | 1.09         |
| ED*4X24B**           | *8MPV050      | 1.02         | 0.98         | EHD4X24A**   | *9MPV050      | 1.03         | 1.03         | FEM4X24****     |               | 1.01         | 0.96         |
| ED*4X24B**           | MV08B15**B*   | 1.00         | 0.96         | EHD4X24A**   | *9MPV075      | 1.03         | 1.03         | FSA4X24**A*     |               | 0.99         | 1.08         |
| ED*4X24B**           |               | 0.99         | 1.09         | EHD4X24A**   | *9MVX040      | 1.03         | 1.03         | FVM4X24****     |               | 1.01         | 0.96         |
| ED*4X24F**           | *9MPV050      | 1.03         | 0.99         | EHD4X24A**   | *9MVX060      | 1.03         | 1.03         |                 |               |              |              |
| <b>(C,H,T),4H424</b> |               |              |              |              |               |              |              |                 |               |              |              |
| >FS(M,U)4X30****     |               | 1.00         | 1.00         | ED*4X30F**   | MV12F19**B*   | 1.01         | 0.93         | EHD4X30A**      | *8MPV100      | 1.03         | 0.94         |
| ED*4X24B**           | *8MPV050      | 1.01         | 0.97         | ED*4X30F**   |               | 1.01         | 1.04         | EHD4X30A**      | *8MPV125      | 1.03         | 0.94         |
| ED*4X24B**           | MV08B15**B*   | 1.00         | 0.92         | EHD4X24A**   | *8MPV050      | 1.02         | 0.97         | EHD4X30A**      | *9MPV050      | 1.02         | 0.94         |
| ED*4X24B**           |               | 0.99         | 1.02         | EHD4X24A**   | *8MPV075      | 1.02         | 0.94         | EHD4X30A**      | *9MPV075      | 1.02         | 0.94         |
| ED*4X24F**           | *8MPV075      | 1.01         | 0.93         | EHD4X24A**   | *8MPV100      | 1.03         | 0.94         | EHD4X30A**      | *9MPV100      | 1.03         | 0.95         |
| ED*4X24F**           | *9MPV050      | 1.00         | 0.96         | EHD4X24A**   | *8MPV125      | 1.03         | 0.94         | EHD4X30A**      | *9MPV125      | 1.03         | 0.94         |
| ED*4X24F**           | *9MPV075      | 1.00         | 0.96         | EHD4X24A**   | *9MPV050      | 1.00         | 0.96         | EHD4X30A**      | *9MVX040      | 1.02         | 0.97         |
| ED*4X24F**           | *9MVX040      | 1.00         | 0.96         | EHD4X24A**   | *9MPV075      | 1.00         | 0.96         | EHD4X30A**      | *9MVX060      | 1.03         | 0.98         |
| ED*4X24F**           | *9MVX060      | 1.01         | 0.97         | EHD4X24A**   | *9MPV100      | 1.02         | 0.97         | EHD4X30A**      | *9MVX080      | 1.03         | 0.95         |
| ED*4X24F**           | MV12F19**B*   | 1.00         | 0.92         | EHD4X24A**   | *9MPV125      | 1.02         | 0.94         | EHD4X30A**      | *9MVX100      | 1.03         | 0.95         |
| ED*4X24F**           |               | 0.99         | 1.02         | EHD4X24A**   | *9MVX040      | 1.00         | 0.96         | EHD4X30A**      | MV08B15**B*   | 1.02         | 0.94         |
| ED*4X30B**           | *8MPV050      | 1.02         | 0.97         | EHD4X24A**   | *9MVX060      | 1.01         | 0.97         | EHD4X30A**      | MV12F19**B*   | 1.02         | 0.94         |
| ED*4X30B**           | MV08B15**B*   | 1.01         | 0.93         | EHD4X24A**   | *9MVX080      | 1.03         | 0.98         | EHD4X30A**      |               | 1.01         | 1.04         |
| ED*4X30B**           |               | 1.01         | 1.04         | EHD4X24A**   | *9MVX100      | 1.02         | 0.94         | EMA4X24D**      |               | 0.99         | 1.02         |
| ED*4X30F**           | *8MPV075      | 1.03         | 0.95         | EHD4X24A**   | MV08B15**B*   | 1.01         | 0.93         | FEM4X24****     |               | 1.00         | 0.96         |
| ED*4X30F**           | *9MPV050      | 1.02         | 0.94         | EHD4X24A**   | MV12F19**B*   | 1.01         | 0.93         | FEM4X30****     |               | 1.02         | 0.94         |
| ED*4X30F**           | *9MPV075      | 1.02         | 0.94         | EHD4X24A**   |               | 1.01         | 1.04         | FS(M,U)4X24**** |               | 0.98         | 1.01         |
| ED*4X30F**           | *9MVX040      | 1.02         | 0.97         | EHD4X30A**   | *8MPV050      | 1.03         | 0.98         | FVM4X24****     |               | 1.01         | 0.91         |
| ED*4X30F**           | *9MVX060      | 1.03         | 0.98         | EHD4X30A**   | *8MPV075      | 1.03         | 0.94         | FVM4X36****     |               | 1.02         | 0.90         |
| <b>(C,H,T),4H430</b> |               |              |              |              |               |              |              |                 |               |              |              |
| >FSU4X36****         |               | 1.00         | 1.00         | ED*4X36J**   | *8MPV125      | 1.02         | 0.90         | EHD4X36A**      | *8MPV125      | 1.03         | 0.92         |
| ED*4X30B**           | *8MPV050      | 1.00         | 0.96         | ED*4X36J**   | *9MPV100      | 1.02         | 0.90         | EHD4X36A**      | *9MPV050      | 1.02         | 0.94         |
| ED*4X30B**           | MV08B15**B*   | 1.01         | 0.93         | ED*4X36J**   | *9MVX080      | 1.02         | 0.90         | EHD4X36A**      | *9MPV075      | 1.02         | 0.94         |
| ED*4X30B**           |               | 1.00         | 1.00         | ED*4X36J**   |               | 1.01         | 1.01         | EHD4X36A**      | *9MPV100      | 1.03         | 0.92         |

&gt; Indicates Tested Indoor Model

- continued on next page -

**COOLING** Multiplying Factors for other Indoor Combinations (continued)

| Indoor Model        | Furnace Model | Capac. (MBh) | Power (AMPS) | Indoor Model | Furnace Model | Capac. (MBh) | Power (AMPS) | Indoor Model   | Furnace Model | Capac. (MBh) | Power (AMPS) |
|---------------------|---------------|--------------|--------------|--------------|---------------|--------------|--------------|----------------|---------------|--------------|--------------|
| ED*4X30F**          | *8MPV075      | 1.01         | 0.93         | EHD4X30A**   | *8MPV050      | 1.01         | 0.96         | EHD4X36A**     | *9MPV125      | 1.03         | 0.92         |
| ED*4X30F**          | *9MPV050      | 1.00         | 0.92         | EHD4X30A**   | *8MPV075      | 1.01         | 0.93         | EHD4X36A**     | *9MVX040      | 1.02         | 0.94         |
| ED*4X30F**          | *9MPV075      | 1.00         | 0.92         | EHD4X30A**   | *8MPV100      | 1.01         | 0.90         | EHD4X36A**     | *9MVX060      | 1.03         | 0.95         |
| ED*4X30F**          | *9MVX040      | 1.00         | 0.96         | EHD4X30A**   | *8MPV125      | 1.01         | 0.90         | EHD4X36A**     | *9MVX080      | 1.04         | 0.92         |
| ED*4X30F**          | *9MVX060      | 1.01         | 0.93         | EHD4X30A**   | *9MPV050      | 1.00         | 0.92         | EHD4X36A**     | *9MVX100      | 1.03         | 0.91         |
| ED*4X30F**          | MV12F19**B*   | 1.01         | 0.89         | EHD4X30A**   | *9MPV075      | 1.00         | 0.92         | EHD4X36A**     | MV08B15**B*   | 1.03         | 0.91         |
| ED*4X30F**          |               | 1.00         | 1.00         | EHD4X30A**   | *9MPV100      | 1.01         | 0.93         | EHD4X36A**     | MV12F19**B*   | 1.03         | 0.91         |
| ED*4X36B**          | *8MPV050      | 1.01         | 0.96         | EHD4X30A**   | *9MPV125      | 1.01         | 0.89         | EHD4X36A**     |               | 1.02         | 0.98         |
| ED*4X36B**          | MV08B15**B*   | 1.01         | 0.89         | EHD4X30A**   | *9MVX040      | 1.00         | 0.96         | EMA4X36D**     |               | 1.00         | 1.00         |
| ED*4X36B**          |               | 1.01         | 1.01         | EHD4X30A**   | *9MVX060      | 1.01         | 0.93         | FEM4X30****    |               | 1.01         | 0.93         |
| ED*4X36F**          | *8MPV075      | 1.01         | 0.91         | EHD4X30A**   | *9MVX080      | 1.01         | 0.93         | FEM4X36****    |               | 1.03         | 0.92         |
| ED*4X36F**          | *9MPV050      | 1.00         | 0.92         | EHD4X30A**   | *9MVX100      | 1.01         | 0.93         | FS(M,U)4X30*** |               | 0.99         | 0.99         |
| ED*4X36F**          | *9MPV075      | 1.01         | 0.93         | EHD4X30A**   | MV08B15**B*   | 1.01         | 0.90         | FSM4X36****    |               | 1.02         | 0.98         |
| ED*4X36F**          | *9MVX040      | 1.00         | 0.92         | EHD4X30A**   | MV12F19**B*   | 1.01         | 0.90         | FVM4X24****    |               | 1.01         | 0.89         |
| ED*4X36F**          | *9MVX060      | 1.01         | 0.93         | EHD4X30A**   |               | 1.01         | 1.01         | FVM4X36****    |               | 1.01         | 0.89         |
| ED*4X36F**          | MV12F19**B*   | 1.01         | 0.90         | EHD4X36A**   | *8MPV050      | 1.03         | 0.95         | FVM4X48****    |               | 1.04         | 0.92         |
| ED*4X36F**          |               | 1.01         | 1.01         | EHD4X36A**   | *8MPV075      | 1.03         | 0.92         |                |               |              |              |
| ED*4X36J**          | *8MPV100      | 1.02         | 0.90         | EHD4X36A**   | *8MPV100      | 1.03         | 0.92         |                |               |              |              |
| <b>(C,H,T)4H436</b> |               |              |              |              |               |              |              |                |               |              |              |
| >FS(M,U)4X42****    |               | 1.00         | 1.00         | ED*4X42J**   |               | 0.99         | 1.02         | EHD4X42A**     | *8MPV100      | 1.02         | 0.90         |
| ED*4X36B**          | *8MPV050      | 0.96         | 0.99         | ED*4X42L**   | *9MPV125      | 1.01         | 0.93         | EHD4X42A**     | *8MPV125      | 1.02         | 0.90         |
| ED*4X36B**          | MV08B15**B*   | 0.98         | 0.94         | ED*4X42L**   | *9MVX100      | 1.00         | 0.92         | EHD4X42A**     | *9MPV050      | 1.00         | 0.96         |
| ED*4X36B**          |               | 0.97         | 1.00         | ED*4X42L**   | MV20L24**B*   | 0.99         | 0.91         | EHD4X42A**     | *9MPV075      | 1.01         | 0.93         |
| ED*4X36F**          | *8MPV075      | 0.98         | 0.94         | ED*4X42L**   |               | 0.99         | 1.02         | EHD4X42A**     | *9MPV100      | 1.02         | 0.94         |
| ED*4X36F**          | *9MPV050      | 0.97         | 1.00         | ED*4X48F**   | MV12F19**B*   | 1.02         | 0.90         | EHD4X42A**     | *9MPV125      | 1.02         | 0.90         |
| ED*4X36F**          | *9MPV075      | 0.97         | 0.93         | EHD4X36A**   | *8MPV050      | 0.99         | 0.95         | EHD4X42A**     | *9MVX040      | 1.00         | 1.00         |
| ED*4X36F**          | *9MVX040      | 0.97         | 1.00         | EHD4X36A**   | *8MPV075      | 1.01         | 0.93         | EHD4X42A**     | *9MVX060      | 1.01         | 0.97         |
| ED*4X36F**          | *9MVX060      | 0.98         | 0.98         | EHD4X36A**   | *8MPV100      | 1.02         | 0.94         | EHD4X42A**     | *9MVX080      | 1.02         | 0.94         |
| ED*4X36F**          | MV12F19**B*   | 0.99         | 0.91         | EHD4X36A**   | *8MPV125      | 1.02         | 0.90         | EHD4X42A**     | *9MVX100      | 1.02         | 0.94         |
| ED*4X36F**          |               | 0.98         | 1.01         | EHD4X36A**   | *9MPV050      | 0.99         | 0.95         | EHD4X42A**     | MV08B15**B*   | 1.01         | 0.93         |
| ED*4X36J**          | *8MPV100      | 1.00         | 0.92         | EHD4X36A**   | *9MPV075      | 0.99         | 0.95         | EHD4X42A**     | MV12F19**B*   | 1.02         | 0.94         |
| ED*4X36J**          | *8MPV125      | 1.00         | 0.92         | EHD4X36A**   | *9MPV100      | 1.01         | 0.93         | EHD4X42A**     | MV16J22**B*   | 1.02         | 0.94         |
| ED*4X36J**          | *9MPV100      | 0.99         | 0.91         | EHD4X36A**   | *9MPV125      | 1.01         | 0.93         | EHD4X42A**     | MV20L24**B*   | 1.02         | 0.94         |
| ED*4X36J**          | *9MVX080      | 0.99         | 0.95         | EHD4X36A**   | *9MVX040      | 0.99         | 0.99         | EHD4X42A**     |               | 1.01         | 0.97         |

> Indicates Tested Indoor Model

- continued on next page -

**COOLING** Multiplying Factors for other Indoor Combinations (continued)

| Indoor Model       | Furnace Model | Capac. (MBh) | Power (AMPS) | Indoor Model | Furnace Model | Capac. (MBh) | Power (AMPS) | Indoor Model    | Furnace Model | Capac. (MBh) | Power (AMPS) |
|--------------------|---------------|--------------|--------------|--------------|---------------|--------------|--------------|-----------------|---------------|--------------|--------------|
| ED*4X36J**         | MV16J22**B*   | 0.99         | 0.91         | EHD4X36A**   | *9MVX060      | 1.00         | 0.96         | EMA4X36D**      |               | 0.98         | 1.00         |
| ED*4X36J**         |               | 0.98         | 1.01         | EHD4X36A**   | *9MVX080      | 1.02         | 0.94         | FEM4X36****     |               | 1.02         | 0.94         |
| ED*4X42F**         | *9MVX040      | 0.98         | 0.98         | EHD4X36A**   | *9MVX100      | 1.01         | 0.93         | FEM4X42****     |               | 1.02         | 0.94         |
| ED*4X42F**         | *9MVX060      | 0.99         | 0.95         | EHD4X36A**   | MV08B15**B*   | 1.01         | 0.93         | FSM4X36****     |               | 1.00         | 1.03         |
| ED*4X42F**         | MV12F19**B*   | 0.99         | 0.91         | EHD4X36A**   | MV12F19**B*   | 1.01         | 0.93         | FSU4X36****     |               | 0.98         | 1.00         |
| ED*4X42J**         | *8MPV100      | 1.01         | 0.93         | EHD4X36A**   | MV16J22**B*   | 1.01         | 0.93         | FVM4X24****     |               | 0.98         | 0.90         |
| ED*4X42J**         | *8MPV125      | 1.01         | 0.89         | EHD4X36A**   | MV20L24**B*   | 1.01         | 0.93         | FVM4X36****     |               | 0.99         | 0.87         |
| ED*4X42J**         | *9MPV100      | 1.00         | 0.92         | EHD4X36A**   |               | 1.01         | 1.03         | FVM4X48****     |               | 1.02         | 0.90         |
| ED*4X42J**         | *9MVX080      | 1.01         | 0.96         | EHD4X42A**   | *8MPV050      | 0.99         | 0.95         | FVM4X60****     |               | 1.03         | 0.91         |
| ED*4X42J**         | MV16J22**B*   | 0.99         | 0.91         | EHD4X42A**   | *8MPV075      | 1.01         | 0.93         |                 |               |              |              |
| <b>(C,H,T)4H42</b> |               |              |              |              |               |              |              |                 |               |              |              |
| >FS(M,U)4X48****   |               | 1.00         | 1.00         | ED*4X48J**   | *8MPV125      | 1.01         | 0.97         | EHD4X48A**      | *8MPV075      | 1.01         | 0.97         |
| ED*4X42F**         | *8MPV075      | 0.98         | 0.98         | ED*4X48J**   | *9MPV100      | 1.01         | 0.97         | EHD4X48A**      | *8MPV100      | 1.01         | 0.97         |
| ED*4X42F**         | *9MPV075      | 0.96         | 0.99         | ED*4X48J**   | *9MVX080      | 1.01         | 0.97         | EHD4X48A**      | *8MPV125      | 1.01         | 0.93         |
| ED*4X42F**         | *9MVX060      | 0.98         | 1.00         | ED*4X48J**   | MV16J22**B*   | 1.01         | 0.93         | EHD4X48A**      | *9MPV075      | 1.00         | 1.00         |
| ED*4X42F**         | MV12F19**B*   | 0.99         | 0.95         | ED*4X48J**   |               | 1.00         | 1.00         | EHD4X48A**      | *9MPV100      | 1.01         | 0.97         |
| ED*4X42F**         |               | 0.99         | 1.01         | ED*4X48L**   | *9MPV125      | 1.01         | 0.97         | EHD4X48A**      | *9MPV125      | 1.01         | 0.97         |
| ED*4X42J**         | *8MPV100      | 0.99         | 0.95         | ED*4X48L**   | *9MVX100      | 1.00         | 0.96         | EHD4X48A**      | *9MVX060      | 1.00         | 1.00         |
| ED*4X42J**         | *8MPV125      | 0.99         | 0.95         | ED*4X48L**   | MV20L24**B*   | 1.01         | 0.93         | EHD4X48A**      | *9MVX080      | 1.01         | 0.97         |
| ED*4X42J**         | *9MPV100      | 0.99         | 0.99         | ED*4X48L**   |               | 1.00         | 1.00         | EHD4X48A**      | *9MVX100      | 1.01         | 0.97         |
| ED*4X42J**         | *9MVX080      | 0.99         | 0.99         | EHD4X42A**   | *8MPV075      | 1.00         | 0.97         | EHD4X48A**      | MV12F19**B*   | 1.01         | 0.93         |
| ED*4X42J**         | MV16J22**B*   | 0.99         | 0.91         | EHD4X42A**   | *8MPV100      | 1.01         | 0.97         | EHD4X48A**      | MV16J22**B*   | 1.01         | 0.93         |
| ED*4X42J**         |               | 0.99         | 1.01         | EHD4X42A**   | *8MPV125      | 1.01         | 0.93         | EHD4X48A**      | MV20L24**B*   | 1.01         | 0.93         |
| ED*4X42L**         | *9MPV125      | 0.99         | 0.95         | EHD4X42A**   | *9MPV075      | 1.00         | 1.00         | EHD4X48A**      |               | 1.01         | 1.01         |
| ED*4X42L**         | *9MVX100      | 0.99         | 0.95         | EHD4X42A**   | *9MPV100      | 1.01         | 0.97         | EMA4X48D**      |               | 1.00         | 1.03         |
| ED*4X42L**         | MV20L24**B*   | 0.99         | 0.91         | EHD4X42A**   | *9MPV125      | 1.01         | 0.97         | FEM4X42****     |               | 1.01         | 0.97         |
| ED*4X42L**         |               | 0.99         | 1.01         | EHD4X42A**   | *9MVX060      | 1.00         | 1.00         | FEM4X48****     |               | 1.01         | 0.93         |
| ED*4X48F**         | *8MPV075      | 1.01         | 0.97         | EHD4X42A**   | *9MVX080      | 1.01         | 0.97         | FS(M,U)4X42**** |               | 1.00         | 1.05         |
| ED*4X48F**         | *9MPV075      | 1.00         | 1.00         | EHD4X42A**   | *9MVX100      | 1.00         | 0.96         | FVM4X36****     |               | 0.98         | 0.94         |
| ED*4X48F**         | *9MVX060      | 1.00         | 1.00         | EHD4X42A**   | MV12F19**B*   | 1.01         | 0.93         | FVM4X48****     |               | 1.01         | 0.93         |
| ED*4X48F**         | MV12F19**B*   | 1.01         | 0.93         | EHD4X42A**   | MV16J22**B*   | 1.01         | 0.93         | FVM4X60****     |               | 1.01         | 0.90         |
| ED*4X48F**         |               | 1.01         | 1.01         | EHD4X42A**   | MV20L24**B*   | 1.01         | 0.93         |                 |               |              |              |
| ED*4X48J**         | *8MPV100      | 1.01         | 0.97         | EHD4X42A**   |               | 1.01         | 1.01         |                 |               |              |              |

> Indicates Tested Indoor Model

- continued on next page -

**COOLING** Multiplying Factors for other Indoor Combinations (continued)

| Indoor Model        | Furnace Model | Capac. (MBh) | Power (AMPS) | Indoor Model | Furnace Model | Capac. (MBh) | Power (AMPS) | Indoor Model    | Furnace Model | Capac. (MBh) | Power (AMPS) |
|---------------------|---------------|--------------|--------------|--------------|---------------|--------------|--------------|-----------------|---------------|--------------|--------------|
| <b>(C,H,T)4H448</b> |               |              |              |              |               |              |              |                 |               |              |              |
| >FS(M,U)4X60****    |               | 1.00         | 1.00         | ED*4X60J**   | MV16J22**B*   | 1.01         | 0.93         | EHD4X60A**      | *8MPV125      | 1.02         | 0.94         |
| ED*4X48F**          |               | 0.98         | 0.98         | ED*4X60J**   |               | 1.01         | 1.01         | EHD4X60A**      | *9MPV100      | 1.01         | 0.97         |
| ED*4X48J**          | *8MPV100      | 0.99         | 0.99         | ED*4X60L**   | *9MPV125      | 1.01         | 0.97         | EHD4X60A**      | *9MPV125      | 1.01         | 0.97         |
| ED*4X48J**          | *8MPV125      | 0.99         | 0.95         | ED*4X60L**   | *9MVX100      | 1.00         | 0.96         | EHD4X60A**      | *9MVX080      | 1.01         | 0.97         |
| ED*4X48J**          | *9MPV100      | 0.98         | 0.98         | ED*4X60L**   | MV20L24**B*   | 1.01         | 0.93         | EHD4X60A**      | *9MVX100      | 1.01         | 0.97         |
| ED*4X48J**          | *9MVX080      | 0.98         | 0.98         | ED*4X60L**   |               | 1.01         | 1.01         | EHD4X60A**      | MV16J22**B*   | 1.01         | 0.89         |
| ED*4X48J**          | MV16J22**B*   | 0.99         | 0.91         | EHD4X48A**   | *8MPV100      | 0.99         | 0.95         | EHD4X60A**      | MV20L24**B*   | 1.01         | 0.89         |
| ED*4X48J**          |               | 0.99         | 0.99         | EHD4X48A**   | *8MPV125      | 1.00         | 0.96         | EHD4X60A**      |               | 1.01         | 1.01         |
| ED*4X48L**          | *9MPV125      | 0.98         | 0.98         | EHD4X48A**   | *9MPV100      | 0.99         | 0.99         | EMA4X48D**      |               | 0.97         | 0.97         |
| ED*4X48L**          | *9MVX100      | 0.98         | 0.98         | EHD4X48A**   | *9MPV125      | 0.99         | 0.95         | FEM4X48****     |               | 1.01         | 0.97         |
| ED*4X48L**          | MV20L24**B*   | 0.99         | 0.91         | EHD4X48A**   | *9MVX080      | 0.99         | 0.99         | FEM4X60****     |               | 1.02         | 0.94         |
| ED*4X48L**          |               | 0.99         | 0.99         | EHD4X48A**   | *9MVX100      | 0.99         | 0.99         | FS(M,U)4X48**** |               | 1.00         | 1.00         |
| ED*4X60J**          | *8MPV100      | 1.01         | 0.97         | EHD4X48A**   | MV16J22**B*   | 1.00         | 0.92         | FVM4X48****     |               | 1.00         | 0.92         |
| ED*4X60J**          | *8MPV125      | 1.01         | 0.93         | EHD4X48A**   | MV20L24**B*   | 1.00         | 0.92         | FVM4X60****     |               | 1.02         | 0.90         |
| ED*4X60J**          | *9MPV100      | 1.01         | 0.97         | EHD4X48A**   |               | 1.00         | 1.00         |                 |               |              |              |
| ED*4X60J**          | *9MVX080      | 1.01         | 0.97         | EHD4X60A**   | *8MPV100      | 1.02         | 0.98         |                 |               |              |              |
| <b>(C,H,T)4H460</b> |               |              |              |              |               |              |              |                 |               |              |              |
| >FEM4X60****        |               | 1.00         | 1.00         | ED*4X60L**   | MV20L24**B*   | 1.01         | 1.01         | EHD4X60A**      | MV20L24**B*   | 1.01         | 1.01         |
| ED*4X60J**          | *8MPV125      | 1.00         | 1.05         | ED*4X60L**   |               | 1.00         | 1.05         | EHD4X60A**      |               | 1.00         | 1.05         |
| ED*4X60J**          | MV16J22**B*   | 1.01         | 1.01         | EHD4X60A**   | *8MPV125      | 1.01         | 1.05         | FVM4X60****     |               | 1.02         | 1.02         |
| ED*4X60J**          |               | 1.00         | 1.05         | EHD4X60A**   | MV16J22**B*   | 1.01         | 1.01         |                 |               |              |              |

> Indicates Tested Indoor Model



## HEATING Multiplying Factors for other Indoor Combinations

| Indoor Model        | Furnace Model | Capac. (MBh) | Power (AMPS) | Indoor Model | Furnace Model | Capac. (MBh) | Power (AMPS) | Indoor Model    | Furnace Model | Capac. (MBh) | Power (AMPS) |
|---------------------|---------------|--------------|--------------|--------------|---------------|--------------|--------------|-----------------|---------------|--------------|--------------|
| <b>(C,H,T)4H418</b> |               |              |              |              |               |              |              |                 |               |              |              |
| >FEM4X18***         |               | 1.00         | 1.00         | ED*4X24F**   | *9MPV075      | 1.00         | 0.95         | EHD4X24A**      | MV08B15**B*   | 1.00         | 0.99         |
| ED*4X18B**          | *8MPV050      | 1.00         | 1.02         | ED*4X24F**   |               | 1.00         | 1.04         | EHD4X24A**      |               | 1.00         | 1.02         |
| ED*4X18B**          | MV08B15**B*   | 1.00         | 1.04         | EHD4X24A**   | *8MPV050      | 1.00         | 0.96         | EMA4X24D**      |               | 1.00         | 1.02         |
| ED*4X24B**          | *8MPV050      | 1.00         | 0.96         | EHD4X24A**   | *9MPV050      | 1.00         | 0.95         | FEM4X24****     |               | 1.00         | 0.99         |
| ED*4X24B**          | MV08B15**B*   | 1.00         | 1.00         | EHD4X24A**   | *9MPV075      | 1.00         | 0.95         | FSA4X24**A*     |               | 1.00         | 1.05         |
| ED*4X24B**          |               | 1.00         | 1.04         | EHD4X24A**   | *9MVX040      | 1.00         | 0.95         | FVM4X24****     |               | 1.00         | 0.98         |
| ED*4X24F**          | *9MPV050      | 1.00         | 0.95         | EHD4X24A**   | *9MVX060      | 1.00         | 0.95         |                 |               |              |              |
| <b>(C,H,T)4H424</b> |               |              |              |              |               |              |              |                 |               |              |              |
| >FS(M,U)4X30***     |               | 1.00         | 1.00         | ED*4X30F**   | MV12F19**B*   | 0.98         | 0.95         | EHD4X30A**      | *8MPV100      | 0.98         | 0.93         |
| ED*4X24B**          | *8MPV050      | 1.00         | 0.97         | ED*4X30F**   |               | 1.00         | 1.02         | EHD4X30A**      | *8MPV125      | 0.98         | 0.93         |
| ED*4X24B**          | MV08B15**B*   | 1.00         | 0.98         | EHD4X24A**   | *8MPV050      | 1.00         | 0.96         | EHD4X30A**      | *9MPV050      | 0.99         | 0.98         |
| ED*4X24B**          |               | 1.00         | 1.01         | EHD4X24A**   | *8MPV075      | 1.00         | 0.95         | EHD4X30A**      | *9MPV075      | 0.99         | 0.97         |
| ED*4X24F**          | *8MPV075      | 1.00         | 0.95         | EHD4X24A**   | *8MPV100      | 1.00         | 0.93         | EHD4X30A**      | *9MPV100      | 0.98         | 0.94         |
| ED*4X24F**          | *9MPV050      | 1.00         | 0.98         | EHD4X24A**   | *8MPV125      | 1.00         | 0.93         | EHD4X30A**      | *9MPV125      | 0.98         | 0.94         |
| ED*4X24F**          | *9MPV075      | 1.00         | 0.98         | EHD4X24A**   | *9MPV050      | 1.00         | 0.98         | EHD4X30A**      | *9MVX040      | 0.99         | 0.98         |
| ED*4X24F**          | *9MVX040      | 1.00         | 0.98         | EHD4X24A**   | *9MPV075      | 1.00         | 0.98         | EHD4X30A**      | *9MVX060      | 0.99         | 0.96         |
| ED*4X24F**          | *9MVX060      | 1.00         | 0.96         | EHD4X24A**   | *9MPV100      | 1.00         | 0.95         | EHD4X30A**      | *9MVX080      | 0.98         | 0.93         |
| ED*4X24F**          | MV12F19**B*   | 1.00         | 0.98         | EHD4X24A**   | *9MPV125      | 1.00         | 0.94         | EHD4X30A**      | *9MVX100      | 0.98         | 0.94         |
| ED*4X24F**          |               | 1.00         | 1.01         | EHD4X24A**   | *9MVX040      | 1.00         | 0.97         | EHD4X30A**      | MV08B15**B*   | 0.98         | 0.95         |
| ED*4X30B**          | *8MPV050      | 1.00         | 0.98         | EHD4X24A**   | *9MVX060      | 1.00         | 0.96         | EHD4X30A**      | MV12F19**B*   | 0.98         | 0.95         |
| ED*4X30B**          | MV08B15**B*   | 0.98         | 0.95         | EHD4X24A**   | *9MVX080      | 1.00         | 0.93         | EHD4X30A**      |               | 1.00         | 1.01         |
| ED*4X30B**          |               | 1.00         | 1.02         | EHD4X24A**   | *9MVX100      | 1.00         | 0.94         | EMA4X24D**      |               | 1.00         | 0.99         |
| ED*4X30F**          | *8MPV075      | 0.99         | 0.94         | EHD4X24A**   | MV08B15**B*   | 1.00         | 0.95         | FEM4X24****     |               | 1.00         | 0.98         |
| ED*4X30F**          | *9MPV050      | 0.99         | 0.97         | EHD4X24A**   | MV12F19**B*   | 1.00         | 0.95         | FEM4X30****     |               | 1.00         | 0.95         |
| ED*4X30F**          | *9MPV075      | 1.00         | 0.97         | EHD4X24A**   |               | 1.00         | 0.98         | FS(M,U)4X24**** |               | 1.00         | 1.03         |
| ED*4X30F**          | *9MVX040      | 0.99         | 0.97         | EHD4X30A**   | *8MPV050      | 0.99         | 0.97         | FVM4X24****     |               | 1.00         | 0.96         |

&gt; Indicates Tested Indoor Model

- continued on next page -

| HEATING Multiplying Factors for other Indoor Combinations (continued) |               |              |              |              |               |              |              |                 |               |              |              |
|---|---------------|--------------|--------------|--------------|---------------|--------------|--------------|-----------------|---------------|--------------|--------------|
| Indoor Model  | Furnace Model | Capac. (MBh) | Power (AMPS) | Indoor Model | Furnace Model | Capac. (MBh) | Power (AMPS) | Indoor Model    | Furnace Model | Capac. (MBh) | Power (AMPS) |
| ED*4X30F**  | *9MVX060      | 1.00         | 0.97         | EHD4X30A**   | *8MPV075      | 0.99         | 0.95         | FVM4X36****     |               | 0.98         | 0.94         |
| <b>(C,H,T)4H430</b>   |               |              |              |              |               |              |              |                 |               |              |              |
| >FSU4X36****  |               | 1.00         | 1.00         | ED*4X36J**   | *8MPV125      | 0.99         | 0.92         | EHD4X36A**      | *8MPV125      | 0.99         | 0.91         |
| ED*4X30B**  | *8MPV050      | 0.99         | 0.99         | ED*4X36J**   | *9MPV100      | 0.99         | 0.93         | EHD4X36A**      | *9MPV050      | 0.99         | 0.95         |
| ED*4X30B**  | MV08B15**B*   | 0.97         | 0.94         | ED*4X36J**   | *9MVX080      | 0.99         | 0.93         | EHD4X36A**      | *9MPV075      | 0.99         | 0.94         |
| ED*4X30B**  |               | 1.00         | 1.00         | ED*4X36J**   |               | 1.00         | 1.00         | EHD4X36A**      | *9MPV100      | 0.99         | 0.92         |
| ED*4X30F**  | *8MPV075      | 0.99         | 0.96         | EHD4X30A**   | *8MPV050      | 1.00         | 0.99         | EHD4X36A**      | *9MPV125      | 0.99         | 0.92         |
| ED*4X30F**  | *9MPV050      | 0.98         | 0.98         | EHD4X30A**   | *8MPV075      | 0.99         | 0.96         | EHD4X36A**      | *9MVX040      | 0.99         | 0.95         |
| ED*4X30F**  | *9MPV075      | 0.98         | 0.97         | EHD4X30A**   | *8MPV100      | 0.98         | 0.95         | EHD4X36A**      | *9MVX060      | 1.00         | 0.94         |
| ED*4X30F**  | *9MVX040      | 0.98         | 0.97         | EHD4X30A**   | *8MPV125      | 0.97         | 0.94         | EHD4X36A**      | *9MVX080      | 1.00         | 0.92         |
| ED*4X30F**  | *9MVX060      | 0.99         | 0.97         | EHD4X30A**   | *9MPV050      | 0.98         | 0.98         | EHD4X36A**      | *9MVX100      | 0.99         | 0.92         |
| ED*4X30F**  | MV12F19**B*   | 0.97         | 0.93         | EHD4X30A**   | *9MPV075      | 0.98         | 0.98         | EHD4X36A**      | MV08B15**B*   | 0.98         | 0.91         |
| ED*4X30F**  |               | 1.00         | 1.00         | EHD4X30A**   | *9MPV100      | 0.98         | 0.96         | EHD4X36A**      | MV12F19**B*   | 0.98         | 0.91         |
| ED*4X36B**  | *8MPV050      | 1.00         | 0.99         | EHD4X30A**   | *9MPV125      | 0.97         | 0.95         | EHD4X36A**      |               | 1.00         | 0.96         |
| ED*4X36B**  | MV08B15**B*   | 0.97         | 0.94         | EHD4X30A**   | *9MVX040      | 0.98         | 0.98         | EMA4X36D**      |               | 1.00         | 1.00         |
| ED*4X36B**  |               | 1.00         | 1.00         | EHD4X30A**   | *9MVX060      | 0.99         | 0.97         | FEM4X30****     |               | 0.99         | 0.95         |
| ED*4X36F**  | *8MPV075      | 0.99         | 0.94         | EHD4X30A**   | *9MVX080      | 0.99         | 0.95         | FEM4X36****     |               | 1.00         | 0.93         |
| ED*4X36F**  | *9MPV050      | 0.99         | 0.97         | EHD4X30A**   | *9MVX100      | 0.97         | 0.95         | FS(M,U)4X30**** |               | 1.00         | 1.00         |
| ED*4X36F**  | *9MPV075      | 0.99         | 0.97         | EHD4X30A**   | MV08B15**B*   | 0.97         | 0.94         | FSM4X36****     |               | 1.00         | 0.97         |
| ED*4X36F**  | *9MVX040      | 0.99         | 0.97         | EHD4X30A**   | MV12F19**B*   | 0.97         | 0.93         | FVM4X24****     |               | 0.97         | 0.93         |
| ED*4X36F**  | *9MVX060      | 0.99         | 0.96         | EHD4X30A**   |               | 1.00         | 0.99         | FVM4X36****     |               | 0.97         | 0.93         |
| ED*4X36F**  | MV12F19**B*   | 0.97         | 0.92         | EHD4X36A**   | *8MPV050      | 1.00         | 0.95         | FVM4X48****     |               | 0.98         | 0.89         |
| ED*4X36F**  |               | 1.00         | 1.00         | EHD4X36A**   | *8MPV075      | 0.99         | 0.92         |                 |               |              |              |
| ED*4X36J**  | *8MPV100      | 0.99         | 0.92         | EHD4X36A**   | *8MPV100      | 0.99         | 0.91         |                 |               |              |              |
| <b>(C,H,T)4H436</b>   |               |              |              |              |               |              |              |                 |               |              |              |
| >FS(M,U)4X42**  |               | 1.00         | 1.00         | ED*4X42J**   |               | 1.00         | 1.01         | EHD4X42A**      | *8MPV100      | 1.00         | 0.93         |
| ED*4X36B**  | *8MPV050      | 0.99         | 1.04         | ED*4X42L**   | *9MPV125      | 0.99         | 0.95         | EHD4X42A**      | *8MPV125      | 1.00         | 0.93         |

&gt; Indicates Tested Indoor Model

- continued on next page -

| HEATING Multiplying Factors for other Indoor Combinations (continued) |               |              |              |              |               |              |              |              |               |              |              |
|---|---------------|--------------|--------------|--------------|---------------|--------------|--------------|--------------|---------------|--------------|--------------|
| Indoor Model  | Furnace Model | Capac. (MBh) | Power (AMPS) | Indoor Model | Furnace Model | Capac. (MBh) | Power (AMPS) | Indoor Model | Furnace Model | Capac. (MBh) | Power (AMPS) |
| ED*4X36B**  | MV08B15**B*   | 0.98         | 0.98         | ED*4X42L**   | *9MVX100      | 0.99         | 0.96         | EHD4X42A**   | *9MPV050      | 1.00         | 0.99         |
| ED*4X36B**  |               | 1.00         | 1.04         | ED*4X42L**   | MV20L24**B*   | 0.97         | 0.94         | EHD4X42A**   | *9MPV075      | 1.00         | 0.98         |
| ED*4X36F**  | *8MPV075      | 0.99         | 0.99         | ED*4X42L**   |               | 1.00         | 1.01         | EHD4X42A**   | *9MPV100      | 1.00         | 0.94         |
| ED*4X36F**  | *9MPV050      | 0.99         | 1.03         | ED*4X48F**   | MV12F19**B*   | 0.99         | 0.92         | EHD4X42A**   | *9MPV125      | 1.00         | 0.93         |
| ED*4X36F**  | *9MPV075      | 0.99         | 1.02         | EHD4X36A**   | *8MPV050      | 1.00         | 1.01         | EHD4X42A**   | *9MVX040      | 1.00         | 0.99         |
| ED*4X36F**  | *9MVX040      | 0.99         | 1.03         | EHD4X36A**   | *8MPV075      | 1.00         | 0.97         | EHD4X42A**   | *9MVX060      | 1.00         | 0.97         |
| ED*4X36F**  | *9MVX060      | 0.99         | 1.00         | EHD4X36A**   | *8MPV100      | 1.00         | 0.94         | EHD4X42A**   | *9MVX080      | 1.00         | 0.93         |
| ED*4X36F**  | MV12F19**B*   | 0.97         | 0.96         | EHD4X36A**   | *8MPV125      | 1.00         | 0.94         | EHD4X42A**   | *9MVX100      | 1.00         | 0.94         |
| ED*4X36F**  |               | 1.00         | 1.02         | EHD4X36A**   | *9MPV050      | 1.00         | 1.00         | EHD4X42A**   | MV08B15**B*   | 0.99         | 0.94         |
| ED*4X36J**  | *8MPV100      | 0.99         | 0.96         | EHD4X36A**   | *9MPV075      | 1.00         | 0.99         | EHD4X42A**   | MV12F19**B*   | 0.98         | 0.92         |
| ED*4X36J**  | *8MPV125      | 0.99         | 0.96         | EHD4X36A**   | *9MPV100      | 1.00         | 0.96         | EHD4X42A**   | MV16J22**B*   | 0.98         | 0.92         |
| ED*4X36J**  | *9MPV100      | 0.99         | 0.98         | EHD4X36A**   | *9MPV125      | 1.00         | 0.95         | EHD4X42A**   | MV20L24**B*   | 0.98         | 0.92         |
| ED*4X36J**  | *9MVX080      | 0.99         | 0.97         | EHD4X36A**   | *9MVX040      | 1.00         | 1.00         | EHD4X42A**   |               | 1.00         | 0.97         |
| ED*4X36J**  | MV16J22**B*   | 0.97         | 0.96         | EHD4X36A**   | *9MVX060      | 1.00         | 0.98         | EMA4X36D**   |               | 1.00         | 1.03         |
| ED*4X36J**  |               | 1.00         | 1.02         | EHD4X36A**   | *9MVX080      | 1.00         | 0.95         | FEM4X36****  |               | 1.00         | 0.95         |
| ED*4X42F**  | *9MVX040      | 0.99         | 1.02         | EHD4X36A**   | *9MVX100      | 0.99         | 0.95         | FEM4X42****  |               | 1.00         | 0.95         |
| ED*4X42F**  | *9MVX060      | 0.99         | 0.99         | EHD4X36A**   | MV08B15**B*   | 0.98         | 0.94         | FSM4X36****  |               | 1.00         | 0.99         |
| ED*4X42F**  | MV12F19**B*   | 0.98         | 0.95         | EHD4X36A**   | MV12F19**B*   | 0.98         | 0.94         | FSU4X36****  |               | 1.00         | 1.03         |
| ED*4X42J**  | *8MPV100      | 1.00         | 0.96         | EHD4X36A**   | MV16J22**B*   | 0.98         | 0.93         | FVM4X24****  |               | 0.98         | 0.99         |
| ED*4X42J**  | *8MPV125      | 0.99         | 0.95         | EHD4X36A**   | MV20L24**B*   | 0.98         | 0.94         | FVM4X36****  |               | 0.97         | 0.97         |
| ED*4X42J**  | *9MPV100      | 1.00         | 0.97         | EHD4X36A**   |               | 1.00         | 0.98         | FVM4X48****  |               | 0.99         | 0.93         |
| ED*4X42J**  | *9MVX080      | 1.00         | 0.96         | EHD4X42A**   | *8MPV050      | 1.00         | 1.00         | FVM4X60****  |               | 0.99         | 0.90         |
| ED*4X42J**  | MV16J22**B*   | 0.97         | 0.94         | EHD4X42A**   | *8MPV075      | 1.00         | 0.95         |              |               |              |              |
| <b>(C,H,T)4H442</b>   |               |              |              |              |               |              |              |              |               |              |              |
| >FS(M,U)4X48***   |               | 1.00         | 1.00         | ED*4X48J**   | *8MPV125      | 0.99         | 0.97         | EHD4X48A**   | *8MPV075      | 1.00         | 1.00         |
| ED*4X42F**  | *8MPV075      | 0.99         | 1.03         | ED*4X48J**   | *9MPV100      | 1.00         | 0.99         | EHD4X48A**   | *8MPV100      | 1.00         | 0.97         |
| ED*4X42F**  | *9MPV075      | 0.99         | 1.06         | ED*4X48J**   | *9MVX080      | 1.00         | 0.99         | EHD4X48A**   | *8MPV125      | 0.99         | 0.96         |

&gt; Indicates Tested Indoor Model

- continued on next page -

| HEATING Multiplying Factors for other Indoor Combinations (continued) |               |              |              |              |               |              |              |                 |               |              |              |
|---|---------------|--------------|--------------|--------------|---------------|--------------|--------------|-----------------|---------------|--------------|--------------|
| Indoor Model  | Furnace Model | Capac. (MBh) | Power (AMPS) | Indoor Model | Furnace Model | Capac. (MBh) | Power (AMPS) | Indoor Model    | Furnace Model | Capac. (MBh) | Power (AMPS) |
| ED*4X42F**  | *9MVX060      | 0.99         | 1.04         | ED*4X48J**   | MV16J22**B*   | 0.98         | 0.95         | EHD4X48A**      | *9MPV075      | 1.00         | 1.02         |
| ED*4X42F**  | MV12F19**B*   | 0.96         | 0.98         | ED*4X48J**   |               | 1.00         | 1.01         | EHD4X48A**      | *9MPV100      | 1.00         | 0.98         |
| ED*4X42F**  |               | 1.00         | 1.04         | ED*4X48L**   | *9MPV125      | 0.99         | 0.98         | EHD4X48A**      | *9MPV125      | 0.99         | 0.97         |
| ED*4X42J**  | *8MPV100      | 0.98         | 0.99         | ED*4X48L**   | *9MVX100      | 0.99         | 0.98         | EHD4X48A**      | *9MVX060      | 1.00         | 1.01         |
| ED*4X42J**  | *8MPV125      | 0.98         | 0.99         | ED*4X48L**   | MV20L24**B*   | 0.98         | 0.95         | EHD4X48A**      | *9MVX080      | 1.00         | 0.98         |
| ED*4X42J**  | *9MPV100      | 0.99         | 1.01         | ED*4X48L**   |               | 1.00         | 1.01         | EHD4X48A**      | *9MVX100      | 0.99         | 0.98         |
| ED*4X42J**  | *9MVX080      | 0.99         | 1.01         | EHD4X42A**   | *8MPV075      | 1.00         | 1.00         | EHD4X48A**      | MV12F19**B*   | 0.99         | 0.96         |
| ED*4X42J**  | MV16J22**B*   | 0.96         | 0.98         | EHD4X42A**   | *8MPV100      | 0.99         | 0.97         | EHD4X48A**      | MV16J22**B*   | 0.98         | 0.95         |
| ED*4X42J**  |               | 1.00         | 1.04         | EHD4X42A**   | *8MPV125      | 0.99         | 0.97         | EHD4X48A**      | MV20L24**B*   | 0.98         | 0.95         |
| ED*4X42L**  | *9MPV125      | 0.98         | 1.00         | EHD4X42A**   | *9MPV075      | 1.00         | 1.03         | EHD4X48A**      |               | 1.00         | 1.00         |
| ED*4X42L**  | *9MVX100      | 0.98         | 1.00         | EHD4X42A**   | *9MPV100      | 1.00         | 0.99         | EMA4X48D**      |               | 1.00         | 1.02         |
| ED*4X42L**  | MV20L24**B*   | 0.96         | 0.97         | EHD4X42A**   | *9MPV125      | 0.99         | 0.98         | FEM4X42****     |               | 1.00         | 1.00         |
| ED*4X42L**  |               | 1.00         | 1.04         | EHD4X42A**   | *9MVX060      | 1.00         | 1.02         | FEM4X48****     |               | 1.00         | 0.95         |
| ED*4X48F**  | *8MPV075      | 1.00         | 0.99         | EHD4X42A**   | *9MVX080      | 1.00         | 0.99         | FS(M,U)4X42**** |               | 1.00         | 1.04         |
| ED*4X48F**  | *9MPV075      | 1.00         | 1.02         | EHD4X42A**   | *9MVX100      | 0.99         | 0.98         | FVM4X36****     |               | 0.96         | 1.00         |
| ED*4X48F**  | *9MVX060      | 1.00         | 1.01         | EHD4X42A**   | MV12F19**B*   | 0.98         | 0.96         | FVM4X48****     |               | 0.98         | 0.95         |
| ED*4X48F**  | MV12F19**B*   | 0.99         | 0.96         | EHD4X42A**   | MV16J22**B*   | 0.98         | 0.95         | FVM4X60****     |               | 0.99         | 0.92         |
| ED*4X48F**  |               | 1.00         | 0.98         | EHD4X42A**   | MV20L24**B*   | 0.98         | 0.95         |                 |               |              |              |
| ED*4X48J**  | *8MPV100      | 0.99         | 0.97         | EHD4X42A**   |               | 1.00         | 1.00         |                 |               |              |              |
| <b>(C,H,T,)4H448</b>  |               |              |              |              |               |              |              |                 |               |              |              |
| >FS(M,U)4X60****  |               | 1.00         | 1.00         | ED*4X60J**   | MV16J22**B*   | 1.00         | 0.99         | EHD4X60A**      | *8MPV125      | 1.00         | 0.98         |
| ED*4X48F**  |               | 1.00         | 1.04         | ED*4X60J**   |               | 1.00         | 1.01         | EHD4X60A**      | *9MPV100      | 1.00         | 1.00         |
| ED*4X48J**  | *8MPV100      | 1.00         | 1.02         | ED*4X60L**   | *9MPV125      | 1.00         | 1.01         | EHD4X60A**      | *9MPV125      | 1.00         | 0.99         |
| ED*4X48J**  | *8MPV125      | 1.00         | 1.02         | ED*4X60L**   | *9MVX100      | 1.00         | 1.02         | EHD4X60A**      | *9MVX080      | 1.00         | 1.00         |
| ED*4X48J**  | *9MPV100      | 1.00         | 1.04         | ED*4X60L**   | MV20L24**B*   | 1.00         | 0.99         | EHD4X60A**      | *9MVX100      | 1.00         | 1.00         |
| ED*4X48J**  | *9MVX080      | 1.00         | 1.03         | ED*4X60L**   |               | 1.00         | 1.01         | EHD4X60A**      | MV16J22**B*   | 1.00         | 0.98         |
| ED*4X48J**  | MV16J22**B*   | 0.99         | 1.00         | EHD4X48A**   | *8MPV100      | 1.00         | 1.01         | EHD4X60A**      | MV20L24**B*   | 1.00         | 0.98         |

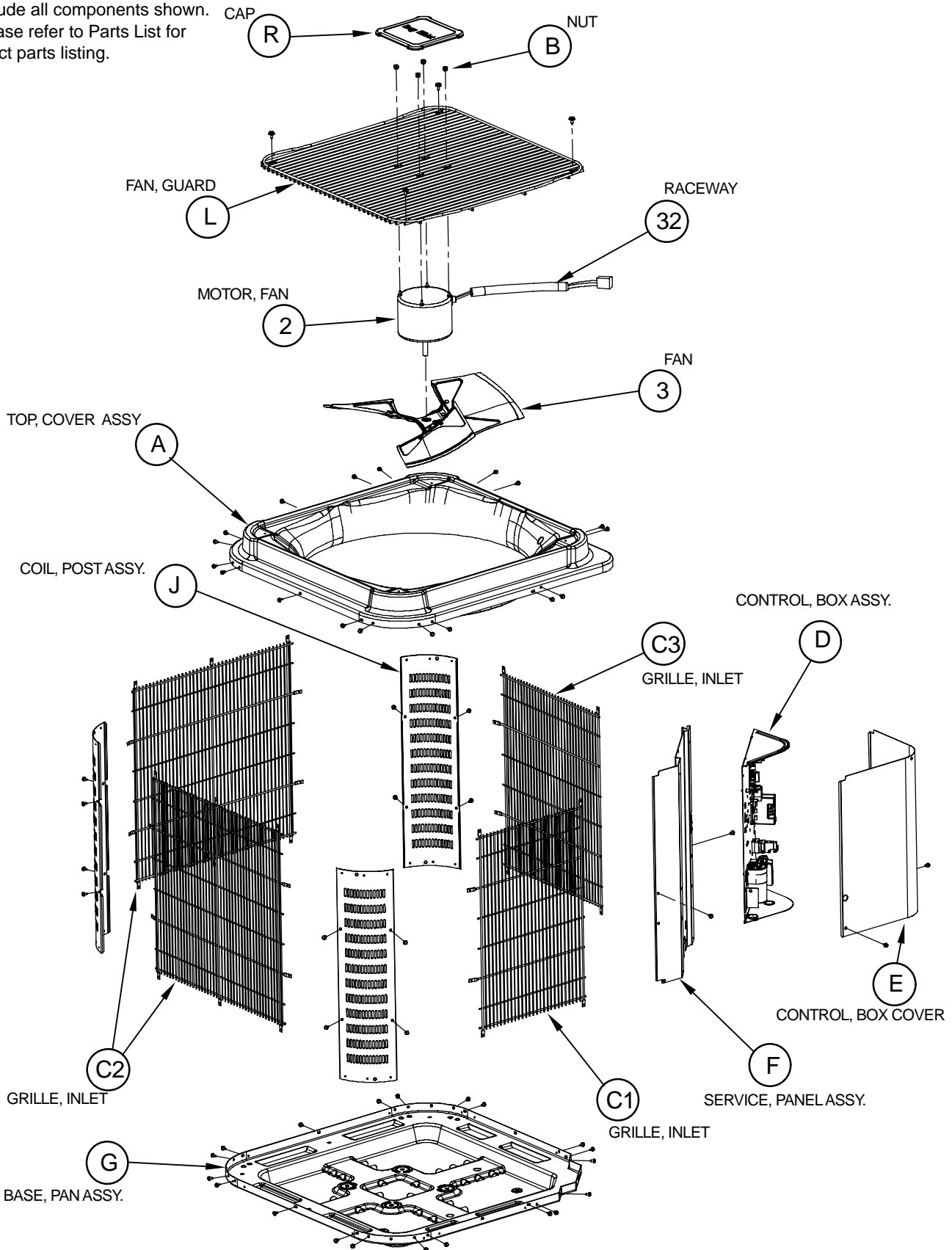
&gt; Indicates Tested Indoor Model

- continued on next page -

| HEATING Multiplying Factors for other Indoor Combinations (continued) |               |              |              |              |               |              |              |                 |               |              |              |
|---|---------------|--------------|--------------|--------------|---------------|--------------|--------------|-----------------|---------------|--------------|--------------|
| Indoor Model  | Furnace Model | Capac. (MBh) | Power (AMPS) | Indoor Model | Furnace Model | Capac. (MBh) | Power (AMPS) | Indoor Model    | Furnace Model | Capac. (MBh) | Power (AMPS) |
| ED*4X48J**  |               | 1.00         | 1.03         | EHD4X48A**   | *8MPV125      | 1.00         | 1.01         | EHD4X60A**      |               | 1.00         | 1.00         |
| ED*4X48L**  | *9MPV125      | 1.00         | 1.03         | EHD4X48A**   | *9MPV100      | 1.00         | 1.03         | EMA4X48D**      |               | 1.00         | 1.08         |
| ED*4X48L**  | *9MVX100      | 1.00         | 1.03         | EHD4X48A**   | *9MPV125      | 1.00         | 1.02         | FEM4X48****     |               | 1.00         | 0.99         |
| ED*4X48L**  | MV20L24**B*   | 0.99         | 1.00         | EHD4X48A**   | *9MVX080      | 1.00         | 1.02         | FEM4X60****     |               | 1.00         | 0.95         |
| ED*4X48L**  |               | 1.00         | 1.03         | EHD4X48A**   | *9MVX100      | 1.00         | 1.03         | FS(M,U)4X48**** |               | 1.00         | 1.04         |
| ED*4X60J**  | *8MPV100      | 1.00         | 0.99         | EHD4X48A**   | MV16J22**B*   | 1.00         | 1.00         | FVM4X48****     |               | 1.00         | 1.01         |
| ED*4X60J**  | *8MPV125      | 1.00         | 0.99         | EHD4X48A**   | MV20L24**B*   | 1.00         | 1.00         | FVM4X60****     |               | 1.00         | 0.97         |
| ED*4X60J**  | *9MPV100      | 1.00         | 1.01         | EHD4X48A**   |               | 1.00         | 1.01         |                 |               |              |              |
| <b>(C,H,T)4H460</b>   |               |              |              |              |               |              |              |                 |               |              |              |
| >FEM4X60****  |               | 1.00         | 1.00         | ED*4X60L**   | MV20L24**B*   | 1.00         | 1.01         | EHD4X60A**      | MV20L24**B*   | 1.00         | 1.00         |
| ED*4X60J**  | *8MPV125      | 1.01         | 1.04         | ED*4X60L**   |               | 1.01         | 1.05         | EHD4X60A**      |               | 1.01         | 1.05         |
| ED*4X60J**  | MV16J22**B*   | 1.00         | 1.01         | EHD4X60A**   | *8MPV125      | 1.01         | 1.03         | FVM4X60****     |               | 1.01         | 1.00         |
| ED*4X60J**  |               | 1.01         | 1.05         | EHD4X60A**   | MV16J22**B*   | 1.00         | 1.00         |                 |               |              |              |

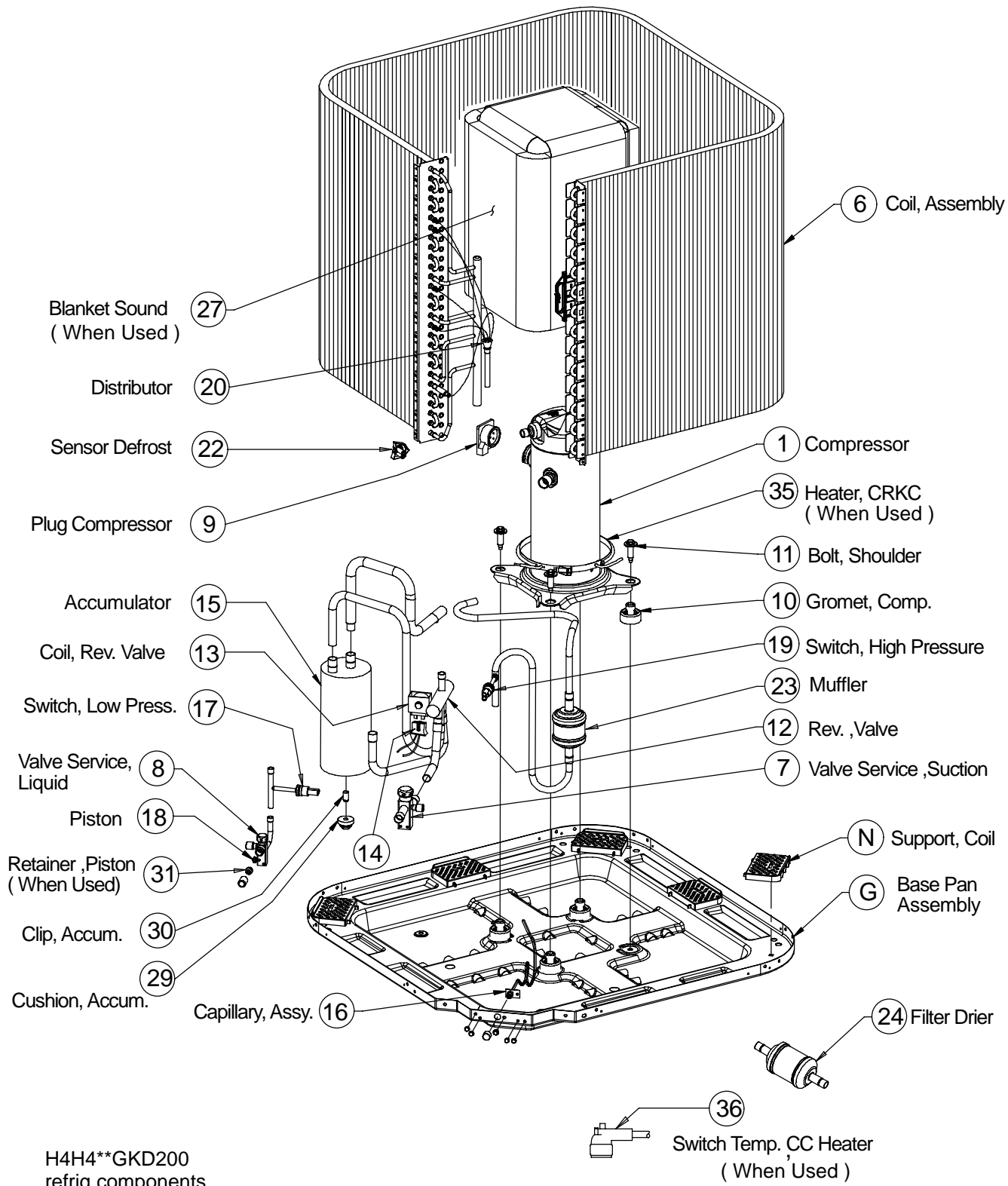
> Indicates Tested Indoor Model

NOTE: This illustration is for reference only. Your unit may differ in appearance or may not include all components shown. Please refer to Parts List for exact parts listing.

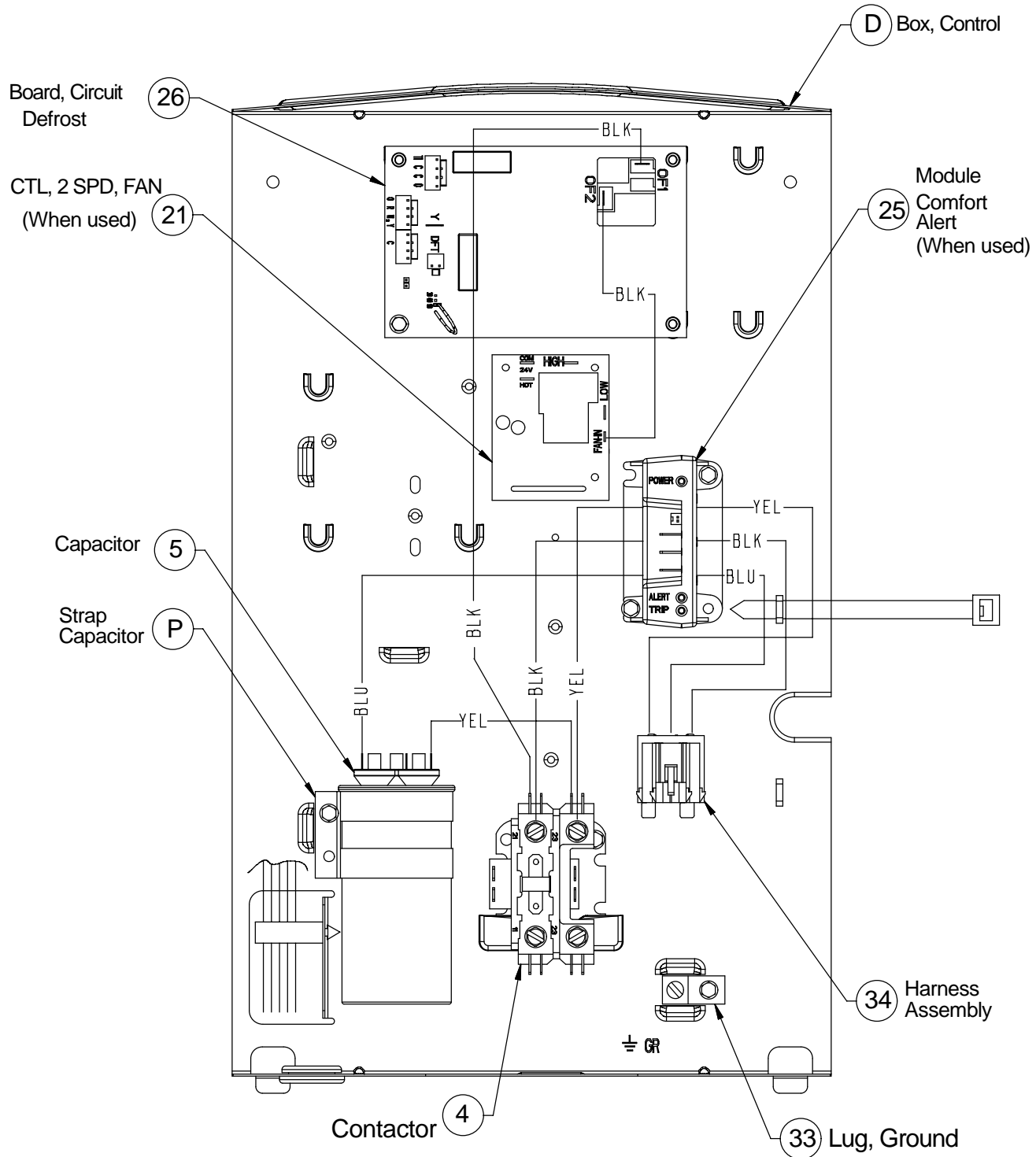


H4H4\*\*GKD200  
cabinet

NOTE: This illustration is for reference only. Your unit may differ in appearance or may not include all components shown. Please refer to Parts List for exact parts listing.



NOTE: This illustration is for reference only. Your unit may differ in appearance or may not include all components shown. Please refer to Parts List for exact parts listing.



H4H4\*\*GKD200  
control box



| C4H4 PARTS LIST |                             |                |              |              |              |              |              |              |
|-----------------|-----------------------------|----------------|--------------|--------------|--------------|--------------|--------------|--------------|
| KEY NO.         | DESCRIPTION                 | FAST PARTS NO. |              |              |              |              |              |              |
|                 |                             |                | C4H418GKD100 | C4H424GKD100 | C4H430GKD100 | C4H436GKD100 | C4H442GKD100 | C4H448GKD100 |
| 01              | COMPRESSOR                  | ZP16K5EPFV130  | 1            | -            | -            | -            | -            | -            |
| 01              |                             | ZP21K5EPFV130  | -            | 1            | -            | -            | -            | -            |
| 01              |                             | ZP25K5EPFV130  | -            | -            | 1            | -            | -            | -            |
| 01              |                             | ZP31K5EPFV130  | -            | -            | -            | 1            | -            | -            |
| 01              |                             | ZP38K5EPFV130  | -            | -            | -            | -            | 1            | -            |
| 01              |                             | ZP42K5EPFV130  | -            | -            | -            | -            | -            | 1            |
| 01              |                             | ZP54K5EPFV130  | -            | -            | -            | -            | -            | 1            |
| 02              | MOTOR CONDENSER FAN         | 1177713        | 1            | 1            | 1            | 1            | 1            | -            |
| 02              |                             | 1177593        | -            | -            | -            | -            | -            | 1            |
| 03              | FAN BLADE                   | 1174940        | 1            | 1            | -            | -            | -            | -            |
| 03              |                             | 1173720        | -            | -            | 1            | 1            | 1            | -            |
| 03              |                             | 1173661        | -            | -            | -            | -            | -            | 1            |
| 04              | CONTACTOR 30 AMP 1 POLE     | 1172472        | 1            | 1            | 1            | 1            | 1            | -            |
| 04              |                             | 1172786        | -            | -            | -            | -            | -            | 1            |
| 05              | CAPACITOR 370V 30+3 MFD     | 1172090        | 1            | -            | -            | -            | -            | -            |
| 05              | 40+3 MFD 370V               | 1172257        | -            | 1            | -            | -            | -            | -            |
| 05              | 40+5 MFD 370V               | 1172147        | -            | -            | 1            | -            | -            | -            |
| 05              | 45+5 MFD 370V               | 1172124        | -            | -            | -            | 1            | 1            | -            |
| 05              | 70+5 MFD 370V               | 1172163        | -            | -            | -            | -            | -            | 1            |
| 05              | 80+5 MFD 370V               | 1172113        | -            | -            | -            | -            | -            | 1            |
| 06              | CONDENSER COIL KIT          | 1177721        | 1            | -            | -            | -            | -            | -            |
| 06              |                             | 1176579        | -            | 1            | -            | -            | -            | -            |
| 06              |                             | 1176580        | -            | -            | 1            | -            | -            | -            |
| 06              |                             | 1176581        | -            | -            | -            | 1            | -            | -            |
| 06              |                             | 1177722        | -            | -            | -            | -            | 1            | -            |
| 06              |                             | 1175016        | -            | -            | -            | -            | -            | 1            |
| 06              |                             | 1175017        | -            | -            | -            | -            | -            | 1            |
| 07              | SERVICE VALVE SUCTION       | 1172725        | 1            | 1            | -            | -            | -            | -            |
| 07              |                             | 1172726        | -            | -            | 1            | 1            | -            | -            |
| 07              |                             | 1172727        | -            | -            | -            | -            | 1            | 1            |
| 08              | SERVICE VALVE LIQUID        | 1173629        | 1            | 1            | 1            | 1            | 1            | 1            |
| 09              | PLUG COMPRESSOR             | 1173905        | 1            | 1            | -            | -            | -            | -            |
| 09              |                             | 1173963        | -            | -            | 1            | 1            | 1            | -            |
| 09              |                             | 1173979        | -            | -            | -            | -            | -            | 1            |
| 10              | GROMMET COMPRESSOR          | 1171270        | 4            | 4            | 4            | 4            | 4            | 4            |
| 11              | BOLT COMPRESSOR MOUNTING    | 1173630        | 4            | 4            | 4            | 4            | 4            | 4            |
| 12              | VALVE REVERSING             | 1173715        | 1            | 1            | -            | -            | -            | -            |
| 12              |                             | 1175621        | -            | -            | 1            | 1            | -            | -            |
| 12              |                             | 1175622        | -            | -            | -            | -            | 1            | 1            |
| 14              | HARNESS ASSY REV VALVE COIL | 1173988        | 1            | 1            | 1            | 1            | 1            | 1            |
| 15              | ACCUMULATOR                 | 1172312        | 1            | -            | -            | -            | -            | -            |
| 15              |                             | 1174937        | -            | 1            | -            | -            | -            | -            |
| 15              |                             | 1176606        | -            | -            | 1            | -            | -            | -            |
| 15              |                             | 1174703        | -            | -            | -            | 1            | -            | -            |
| 15              |                             | 1172122        | -            | -            | -            | -            | 1            | -            |
| 15              |                             | 1174939        | -            | -            | -            | -            | -            | 1            |
| 15              |                             | 1172313        | -            | -            | -            | -            | -            | 1            |
| 16              | CAPILLARY ASSY              | 1174096        | 1            | 1            | 1            | 1            | 1            | 1            |

- continued on next page -

| C4H4 PARTS LIST (continued) |                              |                |              |              |              |              |              |              |              |
|-----------------------------|------------------------------|----------------|--------------|--------------|--------------|--------------|--------------|--------------|--------------|
| KEY NO.                     | DESCRIPTION                  | FAST PARTS NO. | C4H418GKD100 | C4H424GKD100 | C4H430GKD100 | C4H436GKD100 | C4H442GKD100 | C4H448GKD100 | C4H460GKD100 |
|                             |                              |                |              |              |              |              |              |              |              |
| 17                          | SWITCH LOW PRESSURE ASSY     | 1177594        | 1            | 1            | 1            | 1            | 1            | 1            | 1            |
| 18                          | PISTON .042                  | 1173634        | 1            | -            | -            | -            | -            | -            | -            |
| 18                          | .046                         | 1173650        | -            | 1            | -            | -            | -            | -            | -            |
| 18                          | .052                         | 1174060        | -            | -            | 1            | -            | -            | -            | -            |
| 18                          | .059                         | 1173871        | -            | -            | -            | 1            | -            | -            | -            |
| 18                          | .063                         | 1174003        | -            | -            | -            | -            | 1            | -            | -            |
| 18                          | .067                         | 1173867        | -            | -            | -            | -            | -            | 1            | -            |
| 18                          | .073                         | 1174017        | -            | -            | -            | -            | -            | -            | 1            |
| 19                          | SWITCH HIGH PRESSURE         | 1174695        | 1            | 1            | 1            | 1            | 1            | 1            | 1            |
| 20                          | DISTRUBITOR                  | 1172020        | 1            | -            | -            | -            | -            | -            | -            |
| 20                          |                              | 1172021        | -            | 1            | -            | -            | -            | -            | -            |
| 20                          |                              | 1172022        | -            | -            | 1            | 1            | -            | -            |              |
| 20                          |                              | 1173998        | -            | -            | -            | -            | 1            | -            |              |
| 20                          |                              | 1174018        | -            | -            | -            | -            | -            | 1            | 1            |
| 21                          | CTRL 2 SPEED FAN             | 1088977        | 1            | 1            | 1            | 1            | 1            | 1            | 1            |
| 22                          | DEFROST SENSOR               | 1173637        | 1            | 1            | 1            | 1            | 1            | 1            | 1            |
| 23                          | MUFFLER                      | 1173668        | 1            | 1            | 1            | 1            | 1            | 1            | 1            |
| 24                          | DRIER FILTER                 | 1172311        | 1            | 1            | 1            | 1            | 1            | 1            | 1            |
| 25                          | MODULE DIGN COMFORT ALERT    | 1173992        | 1            | 1            | 1            | 1            | 1            | 1            | 1            |
| 26                          | BOARD DEFROST CONTROL        | 1173636        | 1            | 1            | 1            | 1            | 1            | 1            | 1            |
| 27                          | BLANKET SOUND                | 1172015        | 1            | 1            | 1            | 1            | -            | -            | -            |
| 27                          |                              | 1172014        | -            | -            | -            | -            | 1            | 1            | 1            |
| 28                          | CAP FLARE                    | 1172410        | 1            | 1            | 1            | 1            | 1            | 1            | 1            |
| 29                          | CUSHION ACCUMLATOR           | 1172806        | 1            | 1            | 1            | 1            | 1            | 1            | 1            |
| 30                          | CLIP ACCUMLATOR              | 1173640        | 1            | 1            | 1            | 1            | 1            | 1            | 1            |
| 32                          | RACEWAY                      | 1175919        | 1            | 1            | 1            | 1            | 1            | 1            | 1            |
| 33                          | LUG GROUND                   | 1172300        | 1            | 1            | 1            | 1            | 1            | 1            | 1            |
| 34                          | HARNESS ASSY PLUG & PLAY 3PH | 1173909        | 1            | 1            | -            | -            | -            | -            | -            |
| 34                          |                              | 1173920        | -            | -            | 1            | 1            | 1            | 1            | -            |
| 34                          |                              | 1173951        | -            | -            | -            | -            | -            | -            | 1            |
| 35                          | HEATER CRANKCASE             | 1174709        | -            | -            | 1            | 1            | -            | -            | -            |
| 35                          |                              | 1173944        | -            | -            | -            | -            | -            | 1            | 1            |
| 36                          | SWITCH TEMP CC HTR           | 1173669        | -            | -            | 1            | 1            | -            | 1            | 1            |
| A                           | PANEL TOP                    | 1177471        | 1            | 1            | 1            | 1            | 1            | 1            | 1            |
| B                           | NUT HEX                      | 1172217        | 4            | 4            | 4            | 4            | 4            | 4            | 4            |
| C1                          | GRILLE INLET                 | 1177478        | 1            | -            | -            | -            | -            | -            | -            |
| C1                          |                              | 1177476        | -            | 1            | -            | -            | -            | -            | 1            |
| C1                          |                              | 1177474        | -            | -            | 1            | -            | -            | -            | -            |
| C1                          |                              | 1177723        | -            | -            | -            | 1            | 1            | 1            | -            |
| C2                          | GRILLE INLET                 | 1176672        | 2            | -            | -            | -            | -            | -            | -            |
| C2                          |                              | 1176673        | -            | 2            | -            | -            | -            | -            | 2            |
| C2                          |                              | 1176416        | -            | -            | 2            | -            | -            | -            | -            |
| C2                          |                              | 1176420        | -            | -            | -            | 2            | 2            | 2            | -            |
| C3                          | GRILLE INLET                 | 1177479        | 1            | -            | -            | -            | -            | -            | -            |
| C3                          |                              | 1177477        | -            | 1            | -            | -            | -            | -            | 1            |
| C3                          |                              | 1177475        | -            | -            | 1            | -            | -            | -            | -            |
| C3                          |                              | 1177724        | -            | -            | -            | 1            | 1            | 1            | -            |
| D                           | BOX CONTROL                  | 1173643        | 1            | 1            | 1            | 1            | 1            | 1            | 1            |

- continued on next page -

| C4H4 PARTS LIST (continued) |                              |                |              |              |              |              |              |              |              |
|-----------------------------|------------------------------|----------------|--------------|--------------|--------------|--------------|--------------|--------------|--------------|
| KEY NO.                     | DESCRIPTION                  | FAST PARTS NO. | C4H418GKD100 | C4H424GKD100 | C4H430GKD100 | C4H436GKD100 | C4H442GKD100 | C4H448GKD100 | C4H460GKD100 |
|                             |                              |                |              |              |              |              |              |              |              |
| E                           | KIT CONTROL BOX COVER        | 1177714        | 1            | -            | -            | -            | -            | -            | -            |
| E                           |                              | 1177715        | -            | 1            | -            | -            | -            | -            | -            |
| E                           |                              | 1177716        | -            | -            | 1            | -            | -            | -            | -            |
| E                           |                              | 1177717        | -            | -            | -            | 1            | -            | -            | -            |
| E                           |                              | 1177718        | -            | -            | -            | -            | 1            | -            | -            |
| E                           |                              | 1177719        | -            | -            | -            | -            | -            | 1            | -            |
| E                           |                              | 1177720        | -            | -            | -            | -            | -            | -            | 1            |
| F                           | PANEL SERVICE                | 1174066        | 1            | -            | -            | -            | -            | -            | -            |
| F                           |                              | 1174077        | -            | 1            | -            | -            | -            | -            | 1            |
| F                           |                              | 1174071        | -            | -            | 1            | -            | -            | -            | -            |
| F                           |                              | 1174080        | -            | -            | -            | 1            | 1            | 1            | -            |
| G                           | PAN BASE                     | 1177470        | 1            | 1            | 1            | 1            | 1            | 1            | 1            |
| J                           | CORNER POST ASSY             | 1175928        | 1            | -            | -            | -            | -            | -            | -            |
| J                           |                              | 1175931        | -            | 1            | -            | -            | -            | -            | -            |
| J                           |                              | 1175929        | -            | -            | 1            | -            | -            | -            | -            |
| J                           |                              | 1175930        | -            | -            | -            | 1            | 1            | 1            | -            |
| J                           |                              | 1175931        | -            | -            | -            | -            | -            | -            | 1            |
| L                           | GUARD FAN                    | 1173934        | 1            | 1            | 1            | 1            | 1            | 1            | 1            |
| N                           | SUPPORT COIL                 | 1174068        | 5            | 5            | 5            | 5            | 5            | 5            | 5            |
| P                           | STRAP CAPACITOR              | 1172734        | 1            | 1            | 1            | 1            | 1            | -            | -            |
| P                           |                              | 1172735        | -            | -            | -            | -            | -            | 1            | 1            |
| R                           | MOTOR CAP ASSY               | 1174708        | 1            | 1            | 1            | 1            | 1            | 1            | 1            |
| )                           | PAINT TOUCH UP 1PT           | 1174415        | 1            | 1            | 1            | 1            | 1            | 1            | 1            |
| )                           | KIT PISTON TOOL BODY RESIZER | 1175477        | 1            | 1            | 1            | 1            | 1            | 1            | 1            |
| )                           | SCREW 10AB 3/8               | 1176782        | 44           | 44           | 44           | 44           | 44           | 44           | 44           |
| )                           | FILTER DRIER                 | 1174194        | 1            | 1            | 1            | 1            | -            | -            | -            |
| )                           |                              | 1174193        | -            | -            | -            | -            | 1            | 1            | 1            |
| )                           | ADAPTER ASSY                 | 1174192        | 1            | 1            | 1            | 1            | 1            | 1            | 1            |
| )                           | CAP SERVICE KIT 11/16-20     | 1175650        | 1            | 1            | 1            | 1            | 1            | 1            | 1            |
| )                           | CAP SERVICE KIT 15/16-20     | 1175651        | 1            | 1            | 1            | 1            | -            | -            | -            |
| )                           | CAP SERVICE KIT 1-1/16/20    | 1175652        | -            | -            | -            | -            | 1            | 1            | 1            |
| )                           | GROMMET                      | 1171737        | 1            | 1            | 1            | 1            | 1            | 1            | 1            |
| )                           | HARNESS ASSY COMF ALERT      | 1174728        | 1            | 1            | 1            | 1            | 1            | 1            | 1            |
| )                           | Manual, Installation         | 42801510200    | 1            | 1            | 1            | 1            | 1            | 1            | 1            |
| )                           | Manual, Owners               | 42802500000    | 1            | 1            | 1            | 1            | 1            | 1            | 1            |
| )                           | Warranty                     | 40106430001    | 1            | 1            | 1            | 1            | 1            | 1            | 1            |

| H4H4 PARTS LIST |                             |                |              |              |              |              |              |              |              |
|-----------------|-----------------------------|----------------|--------------|--------------|--------------|--------------|--------------|--------------|--------------|
| KEY NO.         | DESCRIPTION                 | FAST PARTS NO. | H4H418GKD100 | H4H424GKD100 | H4H430GKD100 | H4H436GKD100 | H4H442GKD100 | H4H448GKD100 | H4H460GKD100 |
|                 |                             |                |              |              |              |              |              |              |              |
| 01              | COMPRESSOR                  | ZP16K5EPFV130  | 1            | -            | -            | -            | -            | -            | -            |
| 01              |                             | ZP21K5EPFV130  | -            | 1            | -            | -            | -            | -            | -            |
| 01              |                             | ZP25K5EPFV130  | -            | -            | 1            | -            | -            | -            | -            |
| 01              |                             | ZP31K5EPFV130  | -            | -            | -            | 1            | -            | -            | -            |
| 01              |                             | ZP38K5EPFV130  | -            | -            | -            | -            | 1            | -            | -            |
| 01              |                             | ZP42K5EPFV130  | -            | -            | -            | -            | -            | 1            | -            |
| 01              |                             | ZP54K5EPFV130  | -            | -            | -            | -            | -            | -            | 1            |
| 02              | MOTOR CONDENSER FAN         | 1177713        | 1            | 1            | 1            | 1            | 1            | -            | -            |
| 02              |                             | 1177593        | -            | -            | -            | -            | -            | 1            | 1            |
| 03              | FAN BLADE                   | 1174940        | 1            | 1            | -            | -            | -            | -            | -            |
| 03              |                             | 1173720        | -            | -            | 1            | 1            | 1            | -            | -            |
| 03              |                             | 1173661        | -            | -            | -            | -            | -            | 1            | 1            |
| 04              | CONTACTOR 30 AMP 1 POLE     | 1172472        | 1            | 1            | 1            | 1            | 1            | 1            | -            |
| 04              |                             | 1172786        | -            | -            | -            | -            | -            | -            | 1            |
| 05              | CAPACITOR 370V 30+3 MFD     | 1172090        | 1            | -            | -            | -            | -            | -            | -            |
| 05              | 40+3 MFD 370V               | 1172257        | -            | 1            | -            | -            | -            | -            | -            |
| 05              | 40+5 MFD 370V               | 1172147        | -            | -            | 1            | -            | -            | -            | -            |
| 05              | 45+5 MFD 370V               | 1172124        | -            | -            | -            | 1            | 1            | -            | -            |
| 05              | 70+5 MFD 370V               | 1172163        | -            | -            | -            | -            | -            | 1            | -            |
| 05              | 80+5 MFD 370V               | 1172113        | -            | -            | -            | -            | -            | -            | 1            |
| 06              | CONDENSER COIL KIT          | 1177721        | 1            | -            | -            | -            | -            | -            | -            |
| 06              |                             | 1176579        | -            | 1            | -            | -            | -            | -            | -            |
| 06              |                             | 1176580        | -            | -            | 1            | -            | -            | -            | -            |
| 06              |                             | 1176581        | -            | -            | -            | 1            | -            | -            | -            |
| 06              |                             | 1177722        | -            | -            | -            | -            | 1            | -            | -            |
| 06              |                             | 1175016        | -            | -            | -            | -            | -            | 1            | -            |
| 06              |                             | 1175017        | -            | -            | -            | -            | -            | -            | 1            |
| 07              | SERVICE VALVE SUCTION       | 1172725        | 1            | 1            | -            | -            | -            | -            | -            |
| 07              |                             | 1172726        | -            | -            | 1            | 1            | -            | -            | -            |
| 07              |                             | 1172727        | -            | -            | -            | -            | 1            | 1            | 1            |
| 08              | SERVICE VALVE LIQUID        | 1173629        | 1            | 1            | 1            | 1            | 1            | 1            | 1            |
| 09              | PLUG COMPRESSOR             | 1173905        | 1            | 1            | -            | -            | -            | -            | -            |
| 09              |                             | 1173963        | -            | -            | 1            | 1            | 1            | 1            | -            |
| 09              |                             | 1173979        | -            | -            | -            | -            | -            | -            | 1            |
| 10              | GROMMET COMPRESSOR          | 1171270        | 4            | 4            | 4            | 4            | 4            | 4            | 4            |
| 11              | BOLT COMPRESSOR MOUNTING    | 1173630        | 4            | 4            | 4            | 4            | 4            | 4            | 4            |
| 12              | VALVE REVERSING             | 1173715        | 1            | 1            | -            | -            | -            | -            | -            |
| 12              |                             | 1175621        | -            | -            | 1            | 1            | -            | -            | -            |
| 12              |                             | 1175622        | -            | -            | -            | -            | 1            | 1            | 1            |
| 14              | HARNESS ASSY REV VALVE COIL | 1173988        | 1            | 1            | 1            | 1            | 1            | 1            | 1            |
| 15              | ACCUMULATOR                 | 1172312        | 1            | -            | -            | -            | -            | -            | -            |
| 15              |                             | 1174937        | -            | 1            | -            | -            | -            | -            | -            |
| 15              |                             | 1176606        | -            | -            | 1            | -            | -            | -            | -            |
| 15              |                             | 1174703        | -            | -            | -            | 1            | -            | -            | -            |
| 15              |                             | 1172122        | -            | -            | -            | -            | 1            | -            | -            |
| 15              |                             | 1174939        | -            | -            | -            | -            | -            | 1            | -            |
| 15              |                             | 1172313        | -            | -            | -            | -            | -            | -            | 1            |
| 16              | CAPILLARY ASSY              | 1174096        | 1            | 1            | 1            | 1            | 1            | 1            | 1            |

- continued on next page -

| H4H4 PARTS LIST (continued) |                              |                |              |              |              |              |              |              |              |
|-----------------------------|------------------------------|----------------|--------------|--------------|--------------|--------------|--------------|--------------|--------------|
| KEY NO.                     | DESCRIPTION                  | FAST PARTS NO. | H4H418GKD100 | H4H424GKD100 | H4H430GKD100 | H4H436GKD100 | H4H442GKD100 | H4H448GKD100 | H4H460GKD100 |
|                             |                              |                |              |              |              |              |              |              |              |
| 17                          | SWITCH LOW PRESSURE ASSY     | 1177594        | 1            | 1            | 1            | 1            | 1            | 1            | 1            |
| 18                          | PISTON .042                  | 1173634        | 1            | -            | -            | -            | -            | -            | -            |
| 18                          | .046                         | 1173650        | -            | 1            | -            | -            | -            | -            | -            |
| 18                          | .052                         | 1174060        | -            | -            | 1            | -            | -            | -            | -            |
| 18                          | .059                         | 1173871        | -            | -            | -            | 1            | -            | -            | -            |
| 18                          | .063                         | 1174003        | -            | -            | -            | -            | 1            | -            | -            |
| 18                          | .067                         | 1173867        | -            | -            | -            | -            | -            | 1            | -            |
| 18                          | .073                         | 1174017        | -            | -            | -            | -            | -            | -            | 1            |
| 19                          | SWITCH HIGH PRESSURE         | 1174695        | 1            | 1            | 1            | 1            | 1            | 1            | 1            |
| 20                          | DISTRUBITOR                  | 1172020        | 1            | -            | -            | -            | -            | -            | -            |
| 20                          |                              | 1172021        | -            | 1            | -            | -            | -            | -            | -            |
| 20                          |                              | 1172022        | -            | -            | 1            | 1            | -            | -            | -            |
| 20                          |                              | 1173998        | -            | -            | -            | -            | 1            | -            | -            |
| 20                          |                              | 1174018        | -            | -            | -            | -            | -            | 1            | 1            |
| 21                          | CTRL 2 SPEED FAN             | 1088977        | 1            | 1            | 1            | 1            | 1            | 1            | 1            |
| 22                          | DEFROST SENSOR               | 1173637        | 1            | 1            | 1            | 1            | 1            | 1            | 1            |
| 23                          | MUFFLER                      | 1173668        | 1            | 1            | 1            | 1            | 1            | 1            | 1            |
| 24                          | DRIER FILTER                 | 1172311        | 1            | 1            | 1            | 1            | 1            | 1            | 1            |
| 25                          | MODULE DIGN COMFORT ALERT    | 1173992        | 1            | 1            | 1            | 1            | 1            | 1            | 1            |
| 26                          | BOARD DEFROST CONTROL        | 1173636        | 1            | 1            | 1            | 1            | 1            | 1            | 1            |
| 27                          | BLANKET SOUND                | 1172015        | 1            | 1            | 1            | 1            | -            | -            | -            |
| 27                          |                              | 1172014        | -            | -            | -            | -            | 1            | 1            | 1            |
| 28                          | CAP FLARE                    | 1172410        | 1            | 1            | 1            | 1            | 1            | 1            | 1            |
| 29                          | CUSHION ACCUMLATOR           | 1172806        | 1            | 1            | 1            | 1            | 1            | 1            | 1            |
| 30                          | CLIP ACCUMLATOR              | 1173640        | 1            | 1            | 1            | 1            | 1            | 1            | 1            |
| 32                          | RACEWAY                      | 1175919        | 1            | 1            | 1            | 1            | 1            | 1            | 1            |
| 33                          | LUG GROUND                   | 1172300        | 1            | 1            | 1            | 1            | 1            | 1            | 1            |
| 34                          | HARNESS ASSY PLUG & PLAY 3PH | 1173909        | 1            | 1            | -            | -            | -            | -            | -            |
| 34                          |                              | 1173920        | -            | -            | 1            | 1            | 1            | 1            | -            |
| 34                          |                              | 1173951        | -            | -            | -            | -            | -            | -            | 1            |
| 35                          | HEATER CRANKCASE             | 1174709        | -            | -            | 1            | 1            | -            | -            | -            |
| 35                          |                              | 1173944        | -            | -            | -            | -            | -            | 1            | 1            |
| 36                          | SWITCH TEMP CC HTR           | 1173669        | -            | -            | 1            | 1            | -            | 1            | 1            |
| C1                          | GRILLE INLET                 | 1177492        | 1            | -            | -            | -            | -            | -            | -            |
| C1                          |                              | 1177491        | -            | 1            | -            | -            | -            | -            | 1            |
| C1                          |                              | 1177490        | -            | -            | 1            | -            | -            | -            | -            |
| C1                          |                              | 1177733        | -            | -            | -            | 1            | 1            | 1            | -            |
| C2                          | GRILLE INLET                 | 1176701        | 1            | -            | -            | -            | -            | -            | -            |
| C2                          |                              | 1176702        | -            | 1            | -            | -            | -            | -            | 1            |
| C2                          |                              | 1175796        | -            | -            | 1            | -            | -            | -            | -            |
| C2                          |                              | 1175797        | -            | -            | -            | 1            | 1            | 1            | -            |
| C3                          | GRILLE INLET                 | 1177495        | 1            | -            | -            | -            | -            | -            | -            |
| C3                          |                              | 1177494        | -            | 1            | -            | -            | -            | -            | 1            |
| C3                          |                              | 1177493        | -            | -            | 1            | -            | -            | -            | -            |
| C3                          |                              | 1177744        | -            | -            | -            | 1            | 1            | 1            | -            |
| A                           | PANEL TOP                    | 1177489        | 1            | 1            | 1            | 1            | 1            | 1            | 1            |
| B                           | NUT HEX                      | 1172217        | 4            | 4            | 4            | 4            | 4            | 4            | 4            |
| D                           | BOX CONTROL                  | 1173643        | 1            | 1            | 1            | 1            | 1            | 1            | 1            |

- continued on next page -

| H4H4 PARTS LIST (continued) |                              |                |              |              |              |              |              |              |              |
|-----------------------------|------------------------------|----------------|--------------|--------------|--------------|--------------|--------------|--------------|--------------|
| KEY NO.                     | DESCRIPTION                  | FAST PARTS NO. | H4H418GKD100 | H4H424GKD100 | H4H430GKD100 | H4H436GKD100 | H4H442GKD100 | H4H448GKD100 | H4H460GKD100 |
|                             |                              |                |              |              |              |              |              |              |              |
| E                           | KIT CONTROL BOX COVER        | 1177714        | 1            | -            | -            | -            | -            | -            | -            |
| E                           |                              | 1177715        | -            | 1            | -            | -            | -            | -            | -            |
| E                           |                              | 1177716        | -            | -            | 1            | -            | -            | -            | -            |
| E                           |                              | 1177717        | -            | -            | -            | 1            | -            | -            | -            |
| E                           |                              | 1177718        | -            | -            | -            | -            | 1            | -            | -            |
| E                           |                              | 1177719        | -            | -            | -            | -            | -            | 1            | -            |
| E                           |                              | 1177720        | -            | -            | -            | -            | -            | -            | 1            |
| F                           | PANEL SERVICE                | 1174066        | 1            | -            | -            | -            | -            | -            | -            |
| F                           |                              | 1174077        | -            | 1            | -            | -            | -            | -            | 1            |
| F                           |                              | 1174071        | -            | -            | 1            | -            | -            | -            | -            |
| F                           |                              | 1174080        | -            | -            | -            | 1            | 1            | 1            | -            |
| G                           | PAN BASE                     | 1177470        | 1            | 1            | 1            | 1            | 1            | 1            | 1            |
| J                           | CORNER POST ASSY             | 1175927        | 1            | -            | -            | -            | -            | -            | -            |
| J                           |                              | 1175812        | -            | 1            | -            | -            | -            | -            | 1            |
| J                           |                              | 1175810        | -            | -            | 1            | -            | -            | -            | -            |
| J                           |                              | 1175811        | -            | -            | -            | 1            | 1            | 1            | -            |
| L                           | GUARD FAN                    | 1174032        | 1            | 1            | 1            | 1            | 1            | 1            | 1            |
| N                           | SUPPORT COIL                 | 1174068        | 5            | 5            | 5            | 5            | 5            | 5            | 5            |
| P                           | STRAP CAPACITOR              | 1172734        | 1            | 1            | 1            | 1            | 1            | -            | -            |
| P                           |                              | 1172735        | -            | -            | -            | -            | -            | 1            | 1            |
| R                           | MOTOR CAP ASSY               | 1174719        | 1            | 1            | 1            | 1            | 1            | 1            | 1            |
| )                           | PAINT TOUCH UP 1PT           | 1174415        | 1            | 1            | 1            | 1            | 1            | 1            | 1            |
| )                           | KIT PISTON TOOL BODY RESIZER | 1175477        | 1            | 1            | 1            | 1            | 1            | 1            | 1            |
| )                           | SCREW 10AB 3/8               | 1176782        | 44           | 44           | 44           | 44           | 44           | 44           | 44           |
| )                           | FILTER DRIER                 | 1174194        | 1            | 1            | 1            | 1            | -            | -            | -            |
| )                           |                              | 1174193        | -            | -            | -            | -            | 1            | 1            | 1            |
| )                           | ADAPTER ASSY                 | 1174192        | 1            | 1            | 1            | 1            | 1            | 1            | 1            |
| )                           | CAP SERVICE KIT 11/16-20     | 1175650        | 1            | 1            | 1            | 1            | 1            | 1            | 1            |
| )                           | CAP SERVICE KIT 15/16-20     | 1175651        | 1            | 1            | 1            | 1            | -            | -            | -            |
| )                           | CAP SERVICE KIT 1-1/16/20    | 1175652        | -            | -            | -            | -            | 1            | 1            | 1            |
| )                           | GROMMET                      | 1171737        | 1            | 1            | 1            | 1            | 1            | 1            | 1            |
| )                           | HARNESS ASSY COMF ALERT      | 1174728        | 1            | 1            | 1            | 1            | 1            | 1            | 1            |
| )                           | Manual, Installation         | 42801510200    | 1            | 1            | 1            | 1            | 1            | 1            | 1            |
| )                           | Manual, Owners               | 42802500000    | 1            | 1            | 1            | 1            | 1            | 1            | 1            |
| )                           | Warranty                     | 40106430001    | 1            | 1            | 1            | 1            | 1            | 1            | 1            |

| T4H4 PARTS LIST |                             |                |              |              |              |              |              |              |
|-----------------|-----------------------------|----------------|--------------|--------------|--------------|--------------|--------------|--------------|
| KEY NO.         | DESCRIPTION                 | FAST PARTS NO. | T4H418GKD100 | T4H424GKD100 | T4H430GKD100 | T4H436GKD100 | T4H442GKD100 | T4H448GKD100 |
|                 |                             |                |              |              |              |              |              |              |
| 01              | COMPRESSOR                  | ZP16K5EPFV130  | 1            | -            | -            | -            | -            | -            |
| 01              |                             | ZP21K5EPFV130  | -            | 1            | -            | -            | -            | -            |
| 01              |                             | ZP25K5EPFV130  | -            | -            | 1            | -            | -            | -            |
| 01              |                             | ZP31K5EPFV130  | -            | -            | -            | 1            | -            | -            |
| 01              |                             | ZP38K5EPFV130  | -            | -            | -            | -            | 1            | -            |
| 01              |                             | ZP42K5EPFV130  | -            | -            | -            | -            | -            | 1            |
| 01              |                             | ZP54K5EPFV130  | -            | -            | -            | -            | -            | 1            |
| 02              | MOTOR CONDENSER FAN         | 1177713        | 1            | 1            | 1            | 1            | 1            | -            |
| 02              |                             | 1177593        | -            | -            | -            | -            | -            | 1            |
| 03              | FAN BLADE                   | 1174940        | 1            | 1            | -            | -            | -            | -            |
| 03              |                             | 1173720        | -            | -            | 1            | 1            | 1            | -            |
| 03              |                             | 1173661        | -            | -            | -            | -            | -            | 1            |
| 04              | CONTACTOR 30 AMP 1 POLE     | 1172472        | 1            | 1            | 1            | 1            | 1            | -            |
| 04              |                             | 1172786        | -            | -            | -            | -            | -            | 1            |
| 05              | CAPACITOR 370V 30+3 MFD     | 1172090        | 1            | -            | -            | -            | -            | -            |
| 05              | 40+3 MFD 370V               | 1172257        | -            | 1            | -            | -            | -            | -            |
| 05              | 40+5 MFD 370V               | 1172147        | -            | -            | 1            | -            | -            | -            |
| 05              | 45+5 MFD 370V               | 1172124        | -            | -            | -            | 1            | 1            | -            |
| 05              | 70+5 MFD 370V               | 1172163        | -            | -            | -            | -            | -            | 1            |
| 05              | 80+5 MFD 370V               | 1172113        | -            | -            | -            | -            | -            | 1            |
| 06              | CONDENSER COIL KIT          | 1177721        | 1            | -            | -            | -            | -            | -            |
| 06              |                             | 1176579        | -            | 1            | -            | -            | -            | -            |
| 06              |                             | 1176580        | -            | -            | 1            | -            | -            | -            |
| 06              |                             | 1176581        | -            | -            | -            | 1            | -            | -            |
| 06              |                             | 1177722        | -            | -            | -            | -            | 1            | -            |
| 06              |                             | 1175016        | -            | -            | -            | -            | -            | 1            |
| 06              |                             | 1175017        | -            | -            | -            | -            | -            | 1            |
| 07              | SERVICE VALVE SUCTION       | 1172725        | 1            | 1            | -            | -            | -            | -            |
| 07              |                             | 1172726        | -            | -            | 1            | 1            | -            | -            |
| 07              |                             | 1172727        | -            | -            | -            | -            | 1            | 1            |
| 08              | SERVICE VALVE LIQUID        | 1173629        | 1            | 1            | 1            | 1            | 1            | 1            |
| 09              | PLUG COMPRESSOR             | 1173905        | 1            | 1            | -            | -            | -            | -            |
| 09              |                             | 1173963        | -            | -            | 1            | 1            | 1            | -            |
| 09              |                             | 1173979        | -            | -            | -            | -            | -            | 1            |
| 10              | GROMMET COMPRESSOR          | 1171270        | 4            | 4            | 4            | 4            | 4            | 4            |
| 11              | BOLT COMPRESSOR MOUNTING    | 1173630        | 4            | 4            | 4            | 4            | 4            | 4            |
| 12              | VALVE REVERSING             | 1173715        | 1            | 1            | -            | -            | -            | -            |
| 12              |                             | 1175621        | -            | -            | 1            | 1            | -            | -            |
| 12              |                             | 1175622        | -            | -            | -            | -            | 1            | 1            |
| 14              | HARNESS ASSY REV VALVE COIL | 1173988        | 1            | 1            | 1            | 1            | 1            | 1            |
| 15              | ACCUMULATOR                 | 1172312        | 1            | -            | -            | -            | -            | -            |
| 15              |                             | 1174937        | -            | 1            | -            | -            | -            | -            |
| 15              |                             | 1176606        | -            | -            | 1            | -            | -            | -            |
| 15              |                             | 1174703        | -            | -            | -            | 1            | -            | -            |
| 15              |                             | 1172122        | -            | -            | -            | -            | 1            | -            |
| 15              |                             | 1174939        | -            | -            | -            | -            | -            | 1            |
| 15              |                             | 1172313        | -            | -            | -            | -            | -            | 1            |
| 16              | CAPILLARY ASSY              | 1174096        | 1            | 1            | 1            | 1            | 1            | 1            |

- continued on next page -

| T4H4 PARTS LIST (continued) |                              |                |              |              |              |              |              |              |              |
|-----------------------------|------------------------------|----------------|--------------|--------------|--------------|--------------|--------------|--------------|--------------|
| KEY NO.                     | DESCRIPTION                  | FAST PARTS NO. | T4H418GKD100 | T4H424GKD100 | T4H430GKD100 | T4H436GKD100 | T4H442GKD100 | T4H448GKD100 | T4H460GKD100 |
|                             |                              |                |              |              |              |              |              |              |              |
| 17                          | SWITCH LOW PRESSURE ASSY     | 1177594        | 1            | 1            | 1            | 1            | 1            | 1            | 1            |
| 18                          | PISTON .042                  | 1173634        | 1            | -            | -            | -            | -            | -            | -            |
| 18                          | .046                         | 1173650        | -            | 1            | -            | -            | -            | -            | -            |
| 18                          | .052                         | 1174060        | -            | -            | 1            | -            | -            | -            | -            |
| 18                          | .059                         | 1173871        | -            | -            | -            | 1            | -            | -            | -            |
| 18                          | .063                         | 1174003        | -            | -            | -            | -            | 1            | -            | -            |
| 18                          | .067                         | 1173867        | -            | -            | -            | -            | -            | 1            | -            |
| 18                          | .073                         | 1174017        | -            | -            | -            | -            | -            | -            | 1            |
| 19                          | SWITCH HIGH PRESSURE         | 1174695        | 1            | 1            | 1            | 1            | 1            | 1            | 1            |
| 20                          | DISTRUBITOR                  | 1172020        | 1            | -            | -            | -            | -            | -            | -            |
| 20                          |                              | 1172021        | -            | 1            | -            | -            | -            | -            | -            |
| 20                          |                              | 1172022        | -            | -            | 1            | 1            | -            | -            | -            |
| 20                          |                              | 1173998        | -            | -            | -            | -            | 1            | -            | -            |
| 20                          |                              | 1174018        | -            | -            | -            | -            | -            | 1            | 1            |
| 21                          | CTRL 2 SPEED FAN             | 1088977        | 1            | 1            | 1            | 1            | 1            | 1            | 1            |
| 22                          | DEFROST SENSOR               | 1173637        | 1            | 1            | 1            | 1            | 1            | 1            | 1            |
| 23                          | MUFFLER                      | 1173668        | 1            | 1            | 1            | 1            | 1            | 1            | 1            |
| 24                          | DRIER FILTER                 | 1172311        | 1            | 1            | 1            | 1            | 1            | 1            | 1            |
| 25                          | MODULE DIGN COMFORT ALERT    | 1173992        | 1            | 1            | 1            | 1            | 1            | 1            | 1            |
| 26                          | BOARD DEFROST CONTROL        | 1173636        | 1            | 1            | 1            | 1            | 1            | 1            | 1            |
| 27                          | BLANKET SOUND                | 1172015        | 1            | 1            | 1            | 1            | -            | -            | -            |
| 27                          |                              | 1172014        | -            | -            | -            | -            | 1            | 1            | 1            |
| 28                          | CAP FLARE                    | 1172410        | 1            | 1            | 1            | 1            | 1            | 1            | 1            |
| 29                          | CUSHION ACCUMLATOR           | 1172806        | 1            | 1            | 1            | 1            | 1            | 1            | 1            |
| 30                          | CLIP ACCUMLATOR              | 1173640        | 1            | 1            | 1            | 1            | 1            | 1            | 1            |
| 32                          | RACEWAY                      | 1175919        | 1            | 1            | 1            | 1            | 1            | 1            | 1            |
| 33                          | LUG GROUND                   | 1172300        | 1            | 1            | 1            | 1            | 1            | 1            | 1            |
| 34                          | HARNESS ASSY PLUG & PLAY 3PH | 1173909        | 1            | 1            | -            | -            | -            | -            | -            |
| 34                          |                              | 1173920        | -            | -            | 1            | 1            | 1            | 1            | -            |
| 34                          |                              | 1173951        | -            | -            | -            | -            | -            | -            | 1            |
| 35                          | HEATER CRANKCASE             | 1174709        | -            | -            | 1            | 1            | -            | -            | -            |
| 35                          |                              | 1173944        | -            | -            | -            | -            | -            | 1            | 1            |
| 36                          | SWITCH TEMP CC HTR           | 1173669        | -            | -            | 1            | 1            | -            | 1            | 1            |
| C1                          | GRILLE INLET                 | 1177573        | 1            | -            | -            | -            | -            | -            | -            |
| C1                          |                              | 1177575        | -            | 1            | -            | -            | -            | -            | 1            |
| C1                          |                              | 1177574        | -            | -            | 1            | -            | -            | -            | -            |
| C1                          |                              | 1177795        | -            | -            | -            | 1            | 1            | 1            | -            |
| C2                          | GRILLE INLET                 | 1176716        | 1            | -            | -            | -            | -            | -            | -            |
| C2                          |                              | 1176717        | -            | 1            | -            | -            | -            | -            | 1            |
| C2                          |                              | 1176442        | -            | -            | 1            | -            | -            | -            | -            |
| C2                          |                              | 1176446        | -            | -            | -            | 1            | 1            | 1            | -            |
| C3                          | GRILLE INLET                 | 1177576        | 1            | -            | -            | -            | -            | -            | -            |
| C3                          |                              | 1177578        | -            | 1            | -            | -            | -            | -            | 1            |
| C3                          |                              | 1177577        | -            | -            | 1            | -            | -            | -            | -            |
| C3                          |                              | 1177796        | -            | -            | -            | 1            | 1            | 1            | -            |
| A                           | PANEL TOP                    | 1177471        | 1            | 1            | 1            | 1            | 1            | 1            | 1            |
| B                           | NUT HEX                      | 1172217        | 4            | 4            | 4            | 4            | 4            | 4            | 4            |
| D                           | BOX CONTROL                  | 1173643        | 1            | 1            | 1            | 1            | 1            | 1            | 1            |

- continued on next page -



| T4H4 PARTS LIST (continued) |                              |                |              |              |              |              |              |              |              |
|-----------------------------|------------------------------|----------------|--------------|--------------|--------------|--------------|--------------|--------------|--------------|
| KEY NO.                     | DESCRIPTION                  | FAST PARTS NO. | T4H418GKD100 | T4H424GKD100 | T4H430GKD100 | T4H436GKD100 | T4H442GKD100 | T4H448GKD100 | T4H460GKD100 |
|                             |                              |                |              |              |              |              |              |              |              |
| E                           | KIT CONTROL BOX COVER        | 1177714        | 1            | -            | -            | -            | -            | -            | -            |
| E                           |                              | 1177715        | -            | 1            | -            | -            | -            | -            | -            |
| E                           |                              | 1177716        | -            | -            | 1            | -            | -            | -            | -            |
| E                           |                              | 1177717        | -            | -            | -            | 1            | -            | -            | -            |
| E                           |                              | 1177718        | -            | -            | -            | -            | 1            | -            | -            |
| E                           |                              | 1177719        | -            | -            | -            | -            | -            | 1            | -            |
| E                           |                              | 1177720        | -            | -            | -            | -            | -            | -            | 1            |
| F                           | PANEL SERVICE                | 1174066        | 1            | -            | -            | -            | -            | -            | -            |
| F                           |                              | 1174077        | -            | 1            | -            | -            | -            | -            | 1            |
| F                           |                              | 1174071        | -            | -            | 1            | -            | -            | -            | -            |
| F                           |                              | 1174080        | -            | -            | -            | 1            | 1            | 1            | -            |
| G                           | PAN BASE                     | 1177470        | 1            | 1            | 1            | 1            | 1            | 1            | 1            |
| J                           | CORNER POST ASSY             | 1175934        | 1            | -            | -            | -            | -            | -            | -            |
| J                           |                              | 1175937        | -            | 1            | -            | -            | -            | -            | 1            |
| J                           |                              | 1175935        | -            | -            | 1            | -            | -            | -            | -            |
| J                           |                              | 1175936        | -            | -            | -            | 1            | 1            | 1            | -            |
| L                           | GUARD FAN                    | 1177572        | 1            | 1            | 1            | 1            | 1            | 1            | 1            |
| N                           | SUPPORT COIL                 | 1174068        | 5            | 5            | 5            | 5            | 5            | 5            | 5            |
| P                           | STRAP CAPACITOR              | 1172734        | 1            | 1            | 1            | 1            | 1            | -            | -            |
| P                           |                              | 1172735        | -            | -            | -            | -            | -            | 1            | 1            |
| R                           | MOTOR CAP ASSY               | 1174724        | 1            | 1            | 1            | 1            | 1            | 1            | 1            |
| )                           | PAINT TOUCH UP 1PT           | 1174415        | 1            | 1            | 1            | 1            | 1            | 1            | 1            |
| )                           | KIT PISTON TOOL BODY RESIZER | 1175477        | 1            | 1            | 1            | 1            | 1            | 1            | 1            |
| )                           | SCREW 10AB 3/8               | 1176782        | 44           | 44           | 44           | 44           | 44           | 44           | 44           |
| )                           | FILTER DRIER                 | 1174194        | 1            | 1            | 1            | 1            | -            | -            | -            |
| )                           |                              | 1174193        | -            | -            | -            | -            | 1            | 1            | 1            |
| )                           | ADAPTER ASSY                 | 1174192        | 1            | 1            | 1            | 1            | 1            | 1            | 1            |
| )                           | CAP SERVICE KIT 11/16-20     | 1175650        | 1            | 1            | 1            | 1            | 1            | 1            | 1            |
| )                           | CAP SERVICE KIT 15/16-20     | 1175651        | 1            | 1            | 1            | 1            | -            | -            | -            |
| )                           | CAP SERVICE KIT 1-1/16/20    | 1175652        | -            | -            | -            | -            | 1            | 1            | 1            |
| )                           | GROMMET                      | 1171737        | 1            | 1            | 1            | 1            | 1            | 1            | 1            |
| )                           | HARNESS ASSY COMF ALERT      | 1174728        | 1            | 1            | 1            | 1            | 1            | 1            | 1            |
| )                           | Manual, Installation         | 42801510200    | 1            | 1            | 1            | 1            | 1            | 1            | 1            |
| )                           | Manual, Owners               | 42802500000    | 1            | 1            | 1            | 1            | 1            | 1            | 1            |
| )                           | Warranty                     | 40106430001    | 1            | 1            | 1            | 1            | 1            | 1            | 1            |

| <b>OUTDOOR UNIT MODEL NUMBER IDENTIFICATION GUIDE (single phase)</b> |                    |          |                           |          |                         |          |                 |          |          |          |                |
|--|--------------------|----------|---------------------------|----------|-------------------------|----------|-----------------|----------|----------|----------|----------------|
| Digit Position:  | 1                  | 2        | 3                         | 4        | 5, 6                    | 7        | 8               | 9        | 10       | 11       | 12             |
| Example Part Number:   | <b>H</b>           | <b>4</b> | <b>H</b>                  | <b>4</b> | <b>18</b>               | <b>G</b> | <b>K</b>        | <b>D</b> | <b>1</b> | <b>0</b> | <b>0</b>       |
| Product Family   |                    |          |                           |          |                         |          |                 |          |          |          |                |
| 2 = R-22   |                    |          |                           |          |                         |          |                 |          |          |          |                |
| 4 = R-410A   | <b>REFRIGERANT</b> |          |                           |          |                         |          |                 |          |          |          |                |
| A = Air Conditioner  |                    |          |                           |          |                         |          |                 |          |          |          |                |
| H = Heat Pump  |                    |          | <b>TYPE</b>               |          |                         |          |                 |          |          |          |                |
| 3 = 13 SEER  |                    |          |                           |          |                         |          |                 |          |          |          |                |
| 4 = 14 SEER  |                    |          |                           |          |                         |          |                 |          |          |          |                |
| 5 = 15 SEER  |                    |          |                           |          |                         |          |                 |          |          |          |                |
| 6 = 16 SEER  |                    |          |                           |          |                         |          |                 |          |          |          |                |
| 7 = 17 SEER  |                    |          |                           |          |                         |          |                 |          |          |          |                |
| 8 = 18 SEER  |                    |          | <b>NOMINAL EFFICIENCY</b> |          |                         |          |                 |          |          |          |                |
| 18 = 18,000 BTUH = 1½ tons   |                    |          |                           |          |                         |          |                 |          |          |          |                |
| 24 = 24,000 BTUH = 2 tons  |                    |          |                           |          |                         |          |                 |          |          |          |                |
| 30 = 30,000 BTUH = 2½ tons   |                    |          |                           |          |                         |          |                 |          |          |          |                |
| 36 = 36,000 BTUH = 3 tons  |                    |          |                           |          |                         |          |                 |          |          |          |                |
| 42 = 42,000 BTUH = 3½ tons   |                    |          |                           |          |                         |          |                 |          |          |          |                |
| 48 = 48,000 BTUH = 4 tons  |                    |          |                           |          |                         |          |                 |          |          |          |                |
| 60 = 60,000 BTUH = 5 tons  |                    |          |                           |          | <b>NOMINAL CAPACITY</b> |          |                 |          |          |          |                |
| A = Standard Grille  |                    |          |                           |          |                         |          |                 |          |          |          |                |
| G = Coil Guard Grille  |                    |          |                           |          |                         |          |                 |          |          |          |                |
| C = Coastal  |                    |          |                           |          |                         |          | <b>FEATURES</b> |          |          |          |                |
| K = 208/230-1-60   |                    |          |                           |          |                         |          |                 |          |          |          | <b>VOLTAGE</b> |
| Sales Code   |                    |          |                           |          |                         |          |                 |          |          |          |                |
| Engineering Revision   |                    |          |                           |          |                         |          |                 |          |          |          |                |
| Extra Digit  |                    |          |                           |          |                         |          |                 |          |          |          |                |
| Extra Digit  |                    |          |                           |          |                         |          |                 |          |          |          |                |

| <b>ACCESSORIES PART NUMBER IDENTIFICATION GUIDE</b> |                      |          |                     |          |                    |           |           |           |  |
|---|----------------------|----------|---------------------|----------|--------------------|-----------|-----------|-----------|--|
| Digit Position:                                     | 1                    | 2        | 3                   | 4        | 5                  | 6, 7      | 8, 9      | 10, 11    |  |
| Example Part Number:                                | <b>N</b>             | <b>A</b> | <b>S</b>            | <b>A</b> | <b>0</b>           | <b>01</b> | <b>01</b> | <b>CH</b> |  |
| N = Non-Branded                                     | <b>BRANDING</b>      |          |                     |          |                    |           |           |           |  |
| A = Accessory                                       | <b>PRODUCT GROUP</b> |          |                     |          |                    |           |           |           |  |
| S = Split System (AC & HP)                          |                      |          | <b>KIT USAGE</b>    |          |                    |           |           |           |  |
| A = Original  |                      |          |                     |          |                    |           |           |           |  |
| B = 2nd Generation                                  |                      |          | <b>MAJOR SERIES</b> |          |                    |           |           |           |  |
| 0 = Generic or Not Applicable                       |                      |          |                     |          |                    |           |           |           |  |
| 2 = R-22  |                      |          |                     |          |                    |           |           |           |  |
| 4 = R-410A  |                      |          |                     |          | <b>REFRIGERANT</b> |           |           |           |  |
| Product Identifier Number                           |                      |          |                     |          |                    |           |           |           |  |
| Package Quantity                                    |                      |          |                     |          |                    |           |           |           |  |
| Type of Kit<br>(Example: CH = Crankcase Heater)     |                      |          |                     |          |                    |           |           |           |  |