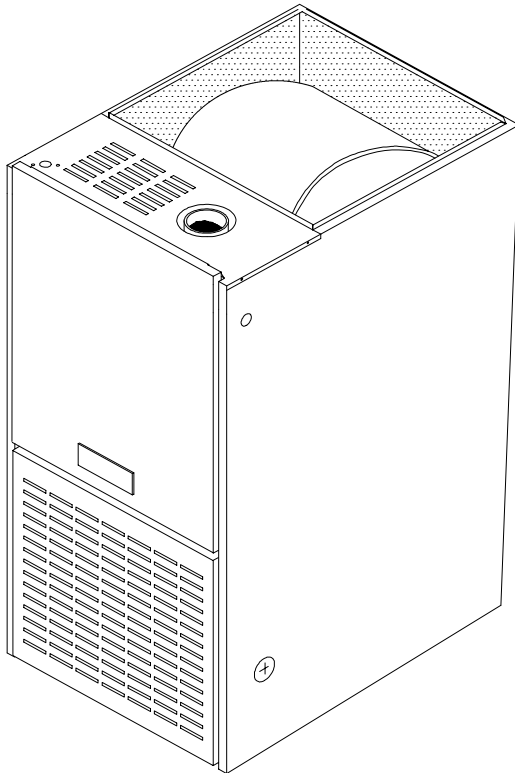


NDC7 GAS FURNACE

TEMPSTAR[®]
Heating and Cooling Products

DOWNFLOW 40" - 81% AFUE

**INDUCED
COMBUSTION**



Representative photo only, some models may vary in appearance.

**MANUFACTURED FOR NATURAL GAS
CONVERTIBLE TO (LP) PROPANE GAS**

NOTE: These furnaces are not designed for installation in a corrosive atmosphere, containing Chlorine, Fluorine, or any other damaging chemicals.

WARNING

This furnace is not designed for use inside mobile homes, trailers, or recreational vehicles. Such use could result in property damage, bodily injury, and/or death.



OPERATION

- 81% AFUE efficiency range.
- Hot surface pilot device.
- Induced draft combustion blower.
- Adjustable electronic fan control with low speed continuous fan feature responds quickly to circulate heated air and provide maximum comfort.

HEAT EXCHANGER

- Four pass aluminized steel.
- 25 year limited heat exchanger warranty.

VENTING

- Dual certified for your choice of venting.
- Category I venting only vented in accordance with installation instructions and local codes.
- Dual certified - can be vented as direct vent or non-direct vent.

BLOWER ASSEMBLY

- Multispeed, prelubricated PSC motors. Dynamically balanced.
- Resilient mounted motors to reduce vibration and noise.
- Entire blower assembly mounted on rails for easy service.

WIRING CENTER

- 40VA transformer.
- Color coded wiring.
- Low voltage terminal board.
- Factory pre-wired to allow easy connection to an electronic air cleaner and/or humidifier.
- Dependable electronic fan timer allows precise comfort control.

CABINET

- Prepainted cabinet & doors.
- Foil-faced glass fiber heat exchanger compartment insulation.
- Insulated blower compartment.

SAFETY

- Controls monitors system for safety.
- Redundant gas valve.
- High temperature limit control.
- Flue blockage pressure switch.
- Blower door interlock switch.
- Flame roll out switch.

INSTALLATION

- Must be installed as a downflow furnace.
- Compact 40" design.
- Convertible to (LP) Propane Gas.
- 0" clearances on sides and back.
- Filters and filter rack standard.
- Twinning kit available to operate two furnaces in tandem.

FURNACE SPECIFICATIONS DOWNFLOW

Model Number	NATURAL GAS	NDC7050BF	NDC7075BF	NDC7100BH	NDC7125BK
INPUT (btuh)		50,000	75,000	100,000	125,000
HTG. CAP. (btuh)		40,000	60,000	80,000	100,000
AFUE % (ICS)		81%	81%	81%	81%
TEMP. RISE (deg. F)		35 - 65	35 - 65	35 - 65	45 - 75
VOLTS/PH/HZ		115/60/1	115/60/1	115/60/1	115/60/1
F.L.A.		5.3	7.5	9.2	12.0
TRANSFORMER (V.A.)		40	40	40	40
GAS PIPE SIZE (IN.)		1/2	1/2	1/2	1/2
CATEGORY I VENT SIZE		3"	4"	4"	5"
COOLING CAP.		3.0 TON	3.0 TON	4.0 TON	5.0 TON
FILTER SIZE (IN.) (1 required)		16 x 25 x 1	16 x 25 x 1	16 x 25 x 1	16 x 25 x 1 (2)
SHIPPING WEIGHT (LBS.)		134	157	175	180
DIMENSIONS (in.) HEIGHT		40	40	40	40
WIDTH X DEPTH		19 ¹ / ₈ x 28 ¹ / ₂	19 ¹ / ₈ x 28 ¹ / ₂	22 ³ / ₄ x 28 ¹ / ₂	22 ³ / ₄ x 28 ¹ / ₂

BLOWER PERFORMANCE

Model Number	NATURAL GAS	NDC7050BF	NDC7075BF	NDC7100BH	NDC7125BK
BLOWER TYPE AND SIZE		10 x 8	10 x 8	10 x 10	11 x 10
MOTOR H.P. (TYPE)		1/3	1/2	1/2	3/4
MOTOR SPEEDS		4	4	4	4

AIRFLOW DATA

.10 ESP IN. W.C.	LOW	718	778	954	1463
	MEDIUM LOW	840	984	1312	1650
	MEDIUM HIGH	1109	1263	1698	1879
	HIGH	1473	1576	1925	2214
.20 ESP IN. W.C.	LOW	719	786	950	1429
	MEDIUM LOW	838	1003	1292	1635
	MEDIUM HIGH	1094	1249	1645	1859
	HIGH	1431	1532	1853	2154
.30 ESP IN. W.C.	LOW	714	790	946	1417
	MEDIUM LOW	837	1003	1265	1614
	MEDIUM HIGH	1086	1244	1596	1838
	HIGH	1396	1489	1780	2152
.40 ESP IN. W.C.	LOW	692	788	915	1389
	MEDIUM LOW	819	1001	1231	1579
	MEDIUM HIGH	1063	1215	1530	1806
	HIGH	1349	1432	1708	2106
.50 ESP IN. W.C.	LOW	660	781	878	1364
	MEDIUM LOW	791	982	1175	1556
	MEDIUM HIGH	1027	1186	1455	1773
	HIGH	1291	1371	1638	2049
.60 ESP IN. W.C.	LOW	615	765	830	1339
	MEDIUM LOW	752	962	1118	1515
	MEDIUM HIGH	986	1146	1362	1725
	HIGH	1222	1308	1546	1981
.70 ESP IN. W.C.	LOW	563	743	778	1299
	MEDIUM LOW	683	923	1020	1470
	MEDIUM HIGH	934	1094	1241	1668
	HIGH	1141	1229	1435	1903

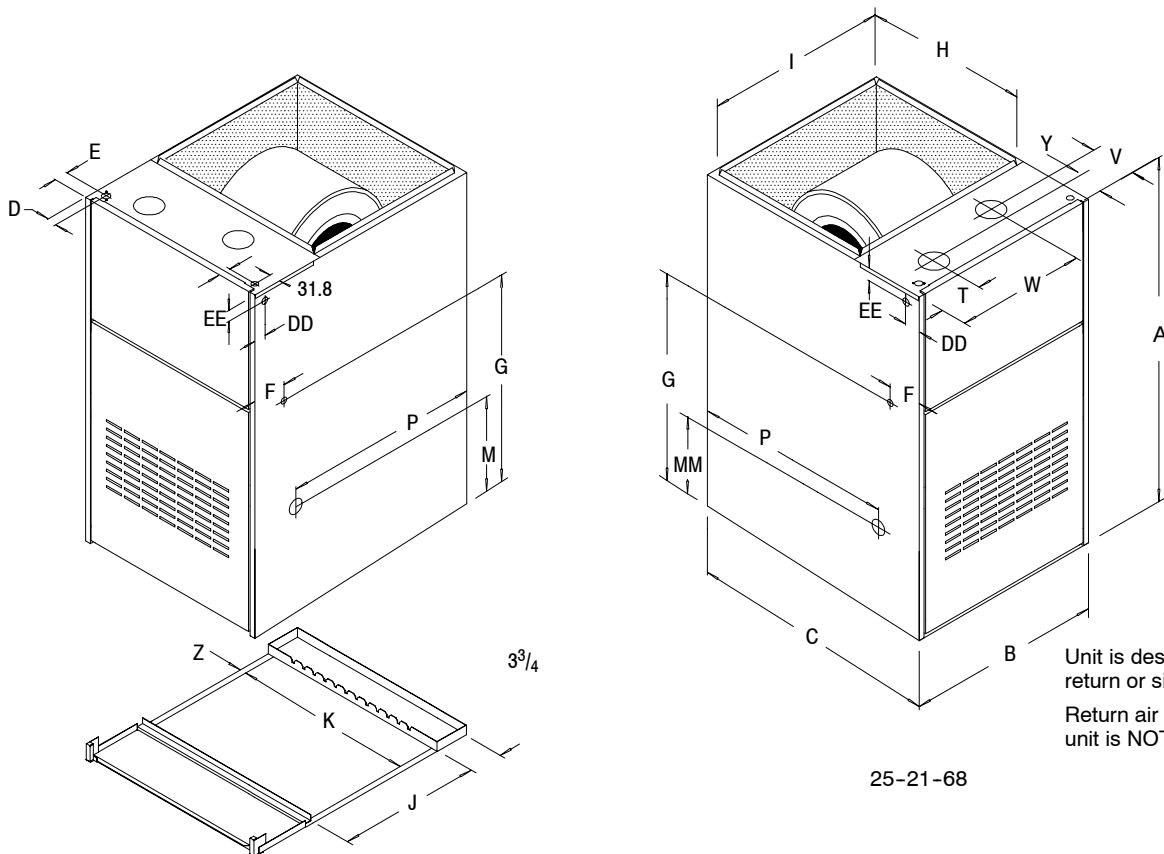
1. Applications of NDC7125BK above 1650 CFM requires two side returns or bottom return.

MODEL NUMBER IDENTIFICATION GUIDE

MODEL NUMBER	N	D	C	7	050	B	F	A	MARKETING REVISION
PRODUCT FAMILY									NOMINAL AIR FLOW (Tons)
PRODUCT GROUP									A = Heat Only G = 3.5
U = Upflow									B = 1 H = 4
H = Horizontal									C = 2 J = 4.5
D = Downflow									D = 2 K = 5
F = Floor Furnace									E = 2.5 L = 5.5 - 7.0
									F = 3 M = 7.5 - 10.0
FUEL									AFUE
C = Natural Gas									A = 78%
N = Natural Gas California NOx									B = 80% IID
L = L.P. Gas									E = 90% IID Standard Vent
									F = 90% Sealed Combustion
									G = 90% TAS
SERIES									NOMINAL INPUT MBTUH
5 = 5000									
7 = 7000									
9 = 9000									

UNIT DIMENSIONS

NOTE: Evaporator "A" coil drain pan dimensions may vary from furnace duct opening size. Always consult evaporator specifications for duct size requirements.



ALL DIMENSIONS IN INCHES

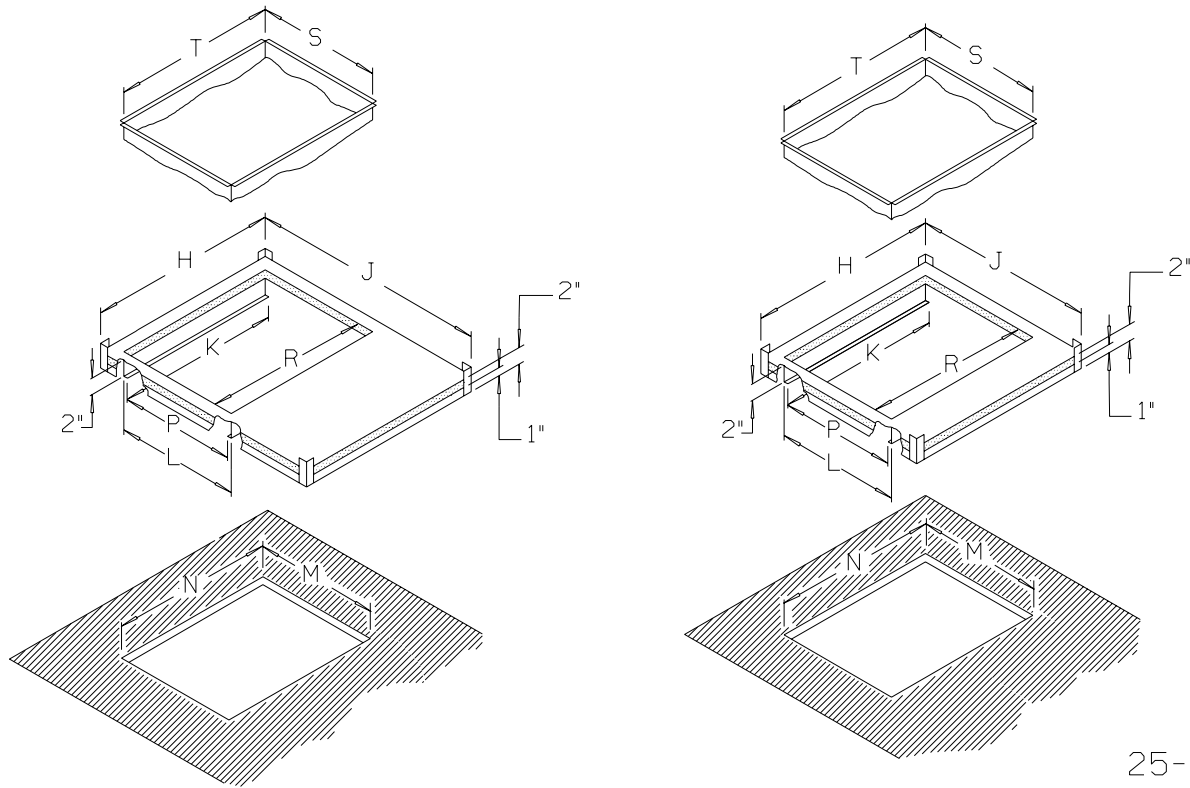
UNIT CAPACITY	CABINET			ELECTRICAL CONNECTIONS						RETURN AIR TOP		SUPPLY AIR			GAS CONNECTIONS				AIR INLET		FLUE OUTLET	
				TOP		SIDE		LOW VOLT				BOTTOM			RIGHT SD.		LEFT SD.					
	A	B	C	D	E	DD	EE	F	G	H	I	J	K	Z	M	P	MM	P	T	Y	W	V
50 & 75,000	40	19 ¹ / ₈	28 ¹ / ₂	1 ⁵ / ₈	1 ⁵ / ₈	1 ⁵ / ₈	1 ¹ / ₂	3 ⁷ / ₈	25 ³ / ₄	18 ¹ / ₂	17 ⁵ / ₈	16 ⁵ / ₈	17 ⁵ / ₈	5 ⁵ / ₈	12 ⁵ / ₈	24	10 ³ / ₈	24	5 ⁵ / ₃₂	3 ¹ / ₄	12 ¹ / ₂	5 ⁵ / ₁₆
100 & 125,000	40	22 ³ / ₄	28 ¹ / ₂	1 ⁵ / ₈	1 ⁵ / ₈	1 ⁵ / ₈	1 ¹ / ₂	3 ⁷ / ₈	25 ³ / ₄	18 ¹ / ₂	21 ¹ / ₄	16 ⁵ / ₈	21 ³ / ₈	5 ⁵ / ₈	12 ⁵ / ₈	24	10 ³ / ₈	24	6 ⁵ / ₈	3 ¹ / ₄	15 ¹ / ₈	5 ⁵ / ₁₆

SPECIFICATIONS SUBJECT TO CHANGE WITHOUT NOTICE

ACCESSORIES

Furnace Model Number	Nat. To LP Kit	Twinning Kit	LP To Nat. Gas Kit	20x25 Duct Stand-off with Filter
NDC7050BF NDC7075BF	NAHF002LP	NAHA003WK	NAHF002NG	NAHA001TK
NDC7100BH NDC7125BK				

SUBBASE DIMENSIONS



25-20-36

Use for	Subbase Model Number	H	J	K	L	M	N	P	R	S	T
Furnace	NAHH002SB	19 ¹ / ₄	28 ³ / ₄	18 ³ / ₁₆	16	16 ¹ / ₄	18 ¹ / ₄	15	17 ¹ / ₈	15	17 ¹ / ₈
	NAHH003SB	23	28 ³ / ₄	21 ¹³ / ₁₆	16	16 ¹ / ₄	21 ⁷ / ₈	15	19 ³ / ₄	15	19 ³ / ₄
Coil Box	NAHH005SB	19 ¹ / ₂	20 ⁹ / ₁₆	18 ³ / ₁₆	16	16 ¹ / ₄	18 ¹ / ₄	15	17 ¹ / ₈	15	17 ¹ / ₈
	NAHH006SB	23	20 ⁹ / ₁₆	21 ¹³ / ₁₆	16	16 ¹ / ₄	21 ⁷ / ₈	15	19 ³ / ₄	15	19 ³ / ₄

ALL DIMENSIONS IN INCHES