



PGME / PGCD Series

Single Phase
Package Gas
2 thru 5 Ton

CONVERTIBLE SINGLE PACKAGE GAS / ELECTRIC

PGME - Standard Models, PGCD -Low NOx Models.

EFFICIENCY

Single Phase, 2 thru 5 tons Cooling, 40,000 thru 140,000 BTUH Heating

SINGLE PACKAGE

- Combination gas heating and electric cooling, self contained for year-round comfort. Systems installed on rooftop or ground level.
- The unit is shipped in the horizontal position and can easily be converted to downflow.

CONSTRUCTION

- 20 gauge galvanized-painted cabinet. One piece weather resistant top. Access panels for easy service. Side by side supply and return. Heavy gauge base with rails.

CABINET

- Triple-coated steel, consisting of a Polyester top coat, a urethane primer coat preceded by an oxide pretreatment.

COMPRESSOR

- All models are equipped with high efficiency scroll compressor.

SLIDE-OUT BLOWER HOUSING

- Specially designed track enhances evaporator motor and blower serviceability.

IMPROVED INSULATION

- Dual density insulation improves temperature separation.

COPPER TUBE/ALUMINUM FIN COILS

- Enhanced aluminium fins mechanically bonded to copper tubes for improved heat transfer.

METERING DEVICE

- Thermostat Expansion Valve (TXV) controls refrigerant flow, maintaining evaporator superheat for maximum efficiency.

ELECTRICAL AND GAS CONTROLS

- Located behind one exterior panel for easier maintenance.
- Electronic pilot ignition device (HSP).
- Adjustable electronic fan control with optional low speed continuous fan feature responds quickly to circulate heated air and provide maximum comfort.

INDUCED DRAFT COMBUSTION SYSTEM

- For smoother combustion and optimal efficiency.

STAINLESS STEEL TUBULAR HEAT EXCHANGER

- Stainless Steel heat exchanger is more corrosion resistant for longer life and the tubular design provides efficient heat transfer.

IN-SHOT BURNERS

- Delivers more complete, efficient combustion.

EXTERNALLY-MOUNTED GAUGE PORTS

- Allows for more accurate reading of operating conditions while servicing.

INTEGRAL BASE RAILS

- Fork-lift access on three sides. Holes provided for lifting lugs makes rooftop installation easier.

COIL PROTECTION

- The condenser coil has a sturdy wire inlet grille and UV rated vinyl mesh installed on the surface of the coil for additional protection.

WARRANTY

- Covered under the 5 year No-Hassle Replacement Warranty.
- Additional component warranties includes:
 - 25 years on Heat Exchanger
 - 10 years on Compressor
 - 5 years on Parts

12 SEER



Rated in accordance
with ARI Standard 210.



UNIT SPECIFICATIONS

MODEL NUMBER	Electrical Data			Condenser Data									
				Coil			Fan Motor			Fan			
	208 / 230 Voltage Phase-Hz	HACR Breaker / Max. Fuse	Ampacity	Total Face Area (Sq. Ft.)	Fins Per In. / Rows	Tube Diameter (In.)	H.P.	Full Load Amps	Locked Rotor Amps	Size Diameter (In.)	Degree Pitch	RPM (Max.)	CFM (Max.)
PGME24G040E / PGCD24B1KE	1-60	25 amps.	17.9	11.47	20 / 1	3/8	1/6	1.0	3.57	20.0	18	1100	2250
PGME24G080E / PGCD24D1KE	1-60	25 amps.	18.1				1/6	1.0	3.57	20.0	18	1100	2250
PGME30G080E / PGCD30D1KE	1-60	30 amps.	20.5	11.47	20 / 1	3/8	1/3	1.3	4.04	20.0	25	1120	3000
PGME36G080E / PGCD36D1KE	1-60	40 amps.	25.0	11.45	20 / 2	3/8	1/3	1.3	4.04	20.0	25	1120	3000
PGME36G100E / PGCD36E1KE	1-60	40 amps.	25.0	11.12			1/3	1.3	4.04	20.0	25	1120	3000
PGME42G080E / PGCD42D1KE	1-60	50 amps.	31.0	17.10	20 / 2	3/8	1/2	1.8	6.42	22.0	22	1140	3500
PGME42G100E / PGCD42E1KE	1-60	50 amps.	31.0	16.41			1/2	1.8	6.42	22.0	22	1140	3500
PGME48G080E / PGCD48D1KE	1-60	50 amps.	35.8	17.10	20 / 2	3/8	1/2	1.8	6.42	22.0	22	1140	3500
PGME48G120E / PGCD48F1KE	1-60	50 amps.	36.0	16.41			1/2	1.8	6.42	22.0	22	1140	3500
PGME60G100E / PGCD60E1KE	1-60	70 amps.	42.9	17.10	20 / 2	3/8	3/4	2.7	9.52	22.0	27	1140	3500
PGME60G140E / PGCD60G1KE	1-60	70 amps.	43.9	17.10			3/4	2.7	9.52	22.0	27	1140	3500

MODEL NUMBER	Evaporator Coil								
	Coil			Blower H.P. / Type / Speeds	Motor		Blower		
	Total Face Area (Sq. Ft.)	Fins Per In. / Rows	Tube Diameter (In.)		Full Load Amps	Locked Rotor Amps	Type & Size	RPM (Max.)	CFM Rated
PGME24G040E / PGCD24B1KE	3.56	14 / 3	3/8	1/4 / PSC / 4	2.1	3.08	DD10-6A	1000	850
PGME24G080E / PGCD24D1KE				1/3 / PSC / 3	2.3	4.10	DD10-8A	1000	
PGME30G080E / PGCD30D1KE	3.56	14 / 4	3/8	1/3 / PSC / 3	2.3	4.10	DD10-8A	1000	1000
PGME36G080E / PGCD36D1KE	3.56	14 / 4	3/8	1/2 / PSC / 4	3.6	7.50	DD11-9A	1075	1200
PGME36G100E / PGCD36E1KE							DD11-9A	1075	
PGME42G080E / PGCD42D1KE	8.22	14 / 3	3/8	1/2 / PSC / 4	4.4	8.63	DD10-9	1075	1400
PGME42G100E / PGCD42E1KE									
PGME48G080E / PGCD48D1KE	8.22	14 / 4	3/8	1/2 / PSC / 4	4.4	8.63	DD10-9	1075	1650
PGME48G120E / PGCD48F1KE				1.0 / PSC / 3	4.6	7.94	DD11-11	1000	
PGME60G100E / PGCD60E1KE	8.22	14 / 4	3/8	1.0 / PSC / 4	5.0	8.80	DD11-11	1000	1800
PGME60G140E / PGCD60G1KE				1.0 / PSC / 4	6.0	15.14		1100	

MODEL NUMBER	Compressor		Factory Refrigerant Charge R-22 Oz.	Shipping Weight (Lbs.)	Sound Rating
	Run Load Amps	Locked Rotor Amps			
PGME24G040E / PGCD24B1KE	11.4	56.0	73	376	7.8
PGME24G080E / PGCD24D1KE	11.4	56.0	73	380	
PGME30G080E / PGCD30D1KE	15.0	72.5	78	392	7.8
PGME36G080E / PGCD36D1KE	17.9	88.0	140.8	429	7.6
PGME36G100E / PGCD36E1KE				439	
PGME42G080E / PGCD42D1KE	19.9	104	180	559	8.2
PGME42G100E / PGCD42E1KE				560	
PGME48G080E / PGCD48D1KE	23.7	129	160	603	7.8
PGME48G120E / PGCD48F1KE				630	
PGME60G100E / PGCD60E1KE	28.8	169	227	626	8.0
PGME60G140E / PGCD60G1KE				636	

PERFORMANCE DATA: HEATING

MODEL NUMBER	NOx Certified	Input (MBTUH) Standard	Output (MBTUH) Standard	Efficiency * (AFUE)	Temperature Rise ° F	Gas Piping Size (In.)	Transformer Size Va.
				Std.			
PGME24G040E	NO	40	31	78.0	35-65	1/2	40
PGCD24B1KE	YES	40	31	78.0	35-65	1/2	40
PGME24G080E	NO	80	62	78.0	35-65	1/2	40
PGCD24D1KE	YES	80	62	78.0	35-65	1/2	40
PGME30G080E	NO	80	62	78.0	35-65	1/2	40
PGCD30D1KE	YES	80	62	78.0	35-65	1/2	40
PGME36G080E	NO	80	62	78.0	35-65	1/2	40
PGCD36D1KE	YES	80	62	78.0	35-65	1/2	40
PGME36G100E	NO	100	78	78.0	35-65	1/2	40
PGCD36E1KE	YES	100	78	78.0	35-65	1/2	40
PGME42G080E	NO	80	62	78.0	35-65	1/2	40
PGCD42D1KE	YES	80	62	78.0	35-65	1/2	40
PGME42G100E	NO	100	78	78.0	35-65	1/2	40
PGCD42E1KE	YES	100	78	78.0	35-65	1/2	40
PGME48G080E	NO	80	62	78.0	35-65	1/2	40
PGCD48D1KE	YES	80	62	78.0	35-65	1/2	40
PGME48G120E	NO	120	94	78.0	35-65	1/2	40
PGCD48F1KE	YES	120	94	78.0	35-65	1/2	40
PGME60G100E	NO	100	78	78.0	35-65	1/2	40
PGCD60E1KE	YES	100	78	78.0	35-65	1/2	40
PGME60G140E	NO	140	109	78.0	35-65	1/2	40
PGCD60G1KE	YES	140	109	78.0	35-65	1/2	40

* As determined by D.O.E. Annual Fuel Utilization Efficiency (A.F.U.E.) Rating Test. Heating capacity valid for elevations up to 2,000 feet above sea level. For elevations above 2,000 feet, rated capacity should be reduced by 4% for each 1,000 feet above sea level.

PERFORMANCE DATA: COOLING

MODEL NUMBER	Rated Capacity ¹ BTUH	S / T Ratio	S.E.E.R.	E.E.R. ³	Power Input Watts	Evaporator Rated Airflow (SCFM)	Ext. Static Pressure Drop ² Wet
PGME24G040E / PGCD24B1KE	23,200	.75	12.10	10.21	2350	850	.15
PGME24G080E / PGCD24D1KE							
PGME30G080E / PGCD30D1KE	30,000	.74	12.10	10.30	2910	1000	.40
PGME36G080E / PGCD36D1KE	34,400	.77	12.05	10.10	3405	1200	.20
PGME36G100E / PGCD36E1KE							.30
PGME42G080E / PGCD42D1KE	41,500	.77	12.10	10.35	4008	1400	.34
PGME42G100E / PGCD42E1KE							
PGME48G080E / PGCD48D1KE	48,000	.78	12.10	10.08	4760	1650	.31
PGME48G120E / PGCD48F1KE							
PGME60G100E / PGCD60E1KE	57,500	.80	12.05	9.74	6022	2000	.38
PGME60G140E / PGCD60G1KE							

¹ ARI Rated Capacity @ 230 Volts 80°db/67°wb -95° amb.. For applications at 208 volts deduct 1000 BTUH.

² Includes a .08 drop for a filter ³ For reference only

BLOWER PERFORMANCE DATA

						Factory Shipped Speed Setting		External Static Pressure (in. H ₂ O)											
								.2"		.3"		.4"		.5"		.6"		.7"	
								CFM	Heating Rise (°F)	CFM	Heating Rise (°F)	CFM	Heating Rise (°F)	CFM	Heating Rise (°F)	CFM	Heating Rise (°F)	CFM	Heating Rise (°F)
Model Number	Motor HP	Wheel Size (D x W)	No. of Speeds	Heating Rise Range (°F)	Motor Speed	Heat	Cool	CFM	Heating Rise (°F)	CFM	Heating Rise (°F)	CFM	Heating Rise (°F)	CFM	Heating Rise (°F)	CFM	Heating Rise (°F)	CFM	Heating Rise (°F)
PGCD24B1KE PGME24G040E	1/4	10 x 6	4	35 - 65	HI			995	NA	960	NA	925	NA	880	NA	835	35	780	37
					MD HI			825	35	805	36	775	37	745	39	705	41	660	44
					MD LO			725	40	705	41	675	43	650	44	615	47	570	51
					LO	LO	LO	620	47	605	48	585	49	565	51	530	55	485	60
PGCD24D1KE PGME24G080E	1/3	10 x 8	3	35 - 65	HI	HI		1191	49	1126	51	1058	55	964	60	845	NA	732	NA
					MD			950	61	909	64	857	NA	791	NA	714	NA	622	NA
					LO		LO	820	NA	793	NA	755	NA	703	NA	634	NA	548	NA
PGCD30D1KE PGME30G080E	1/3	10 x 8	3	35 - 65	HI	HI		1191	49	1126	51	1058	55	964	60	845	NA	732	NA
					MD			950	61	909	64	857	NA	791	NA	714	NA	622	NA
					LO		LO	820	NA	793	NA	755	NA	703	NA	634	NA	548	NA
PGCD36D1KE PGME36G080E	1/2	11 x 9	3	35 - 65	HI			1435	40	1375	42	1310	44	1245	46	1175	49	1105	52
					MD	MD	MD	1270	45	1220	47	1165	50	1100	53	1045	55	990	58
					LO			1110	52	1080	53	1045	55	1005	57	955	61	905	64
PGCD36E1KE PGME36G100E	1/2	11 x 9	3	35 - 65	HI	HI		1435	50	1375	53	1310	55	1245	58	1175	61	1105	65
					MD		MD	1270	57	1220	59	1165	62	1100	NA	1045	NA	990	NA
					LO			1110	65	1080	NA	1045	NA	1005	NA	955	NA	905	NA
PGCD42D1KE PGMEG080E	1/2	10 x 9	4	35 - 65	HI			1860	NA	1795	NA	1725	NA	1650	35	1570	37	1485	39
					MD HI			1735	NA	1680	NA	1620	36	1560	37	1485	39	1405	41
					MD LO			1540	38	1505	38	1465	39	1415	41	1350	43	1280	45
					LO	LO	LO	1460	40	1430	40	1395	41	1345	43	1290	45	1225	47
PGCD42E1KE PGME42G100E	1/2	10 x 9	4	35 - 65	HI			1860	39	1795	40	1725	42	1650	44	1570	46	1485	49
					MD HI			1735	42	1680	43	1620	45	1560	46	1485	49	1405	51
					MD LO	MD LO		1540	47	1505	48	1465	49	1415	51	1350	53	1280	56
					LO		LO	1460	49	1430	51	1395	52	1345	54	1290	56	1225	59
PGCD48D1KE PGME48G080E	1/2	10 x 9	4	35 - 65	HI			1860	NA	1795	NA	1725	NA	1650	35	1570	37	1485	39
					MD HI		MD HI	1735	NA	1680	NA	1620	36	1560	37	1485	39	1405	41
					MD LO			1540	38	1505	38	1465	39	1415	41	1350	43	1280	45
					LO	LO		1460	40	1430	40	1395	41	1345	43	1290	45	1225	47
PGCD48F1KE PGME48G120E	1	11 x 11	3	35 - 65	HI			2127	41	2076	42	2029	43	1978	44	1912	45	1827	47
					MD	MD		1745	50	1727	50	1702	51	1674	52	1644	53	1592	54
					LO		LO	1628	53	1627	53	1613	54	1576	55	1547	56	1507	58
PGCD60E1KE PGME60G100E	1	11 x 11	4	35 - 65	HI			2250	NA	2190	NA	2125	NA	2060	35	1990	36	1915	38
					MD HI			2090	35	2045	35	1995	36	1935	37	1875	39	1805	40
					MD LO	MD LO	MD LO	1650	44	1630	44	1600	45	1565	46	1525	47	1475	49
					LO			1315	55	1300	56	1280	56	1255	58	1225	59	1185	61
PGCD60G1KE PGME60G140E	1	11 x 11	4	35 - 65	HI			2400	43	2365	44	2308	45	2225	47	2146	48	2060	50
					MD HI			2370	44	2343	44	2281	45	2200	47	2121	49	2039	51
					MD LO	MD LO	MD LO	2274	46	2207	47	2149	48	2086	50	2011	52	1933	54
					LO			2172	48	2127	49	2067	50	2014	51	1946	53	1870	55

NOTES:

NA = Not Allowed for Heating Speed.

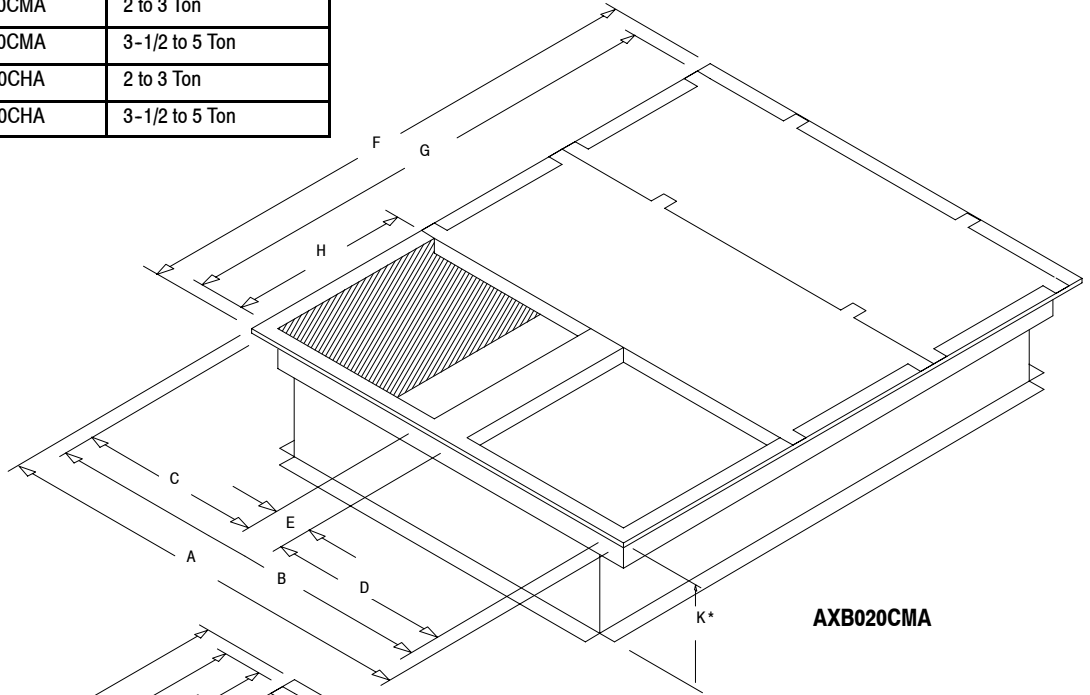
Air delivery against shown external static pressures taken with 230V to unit and dry coil. For wet coil subtract approximately 25 CFM. Add .08 static for internal filters.

* Dry coil, no filter.

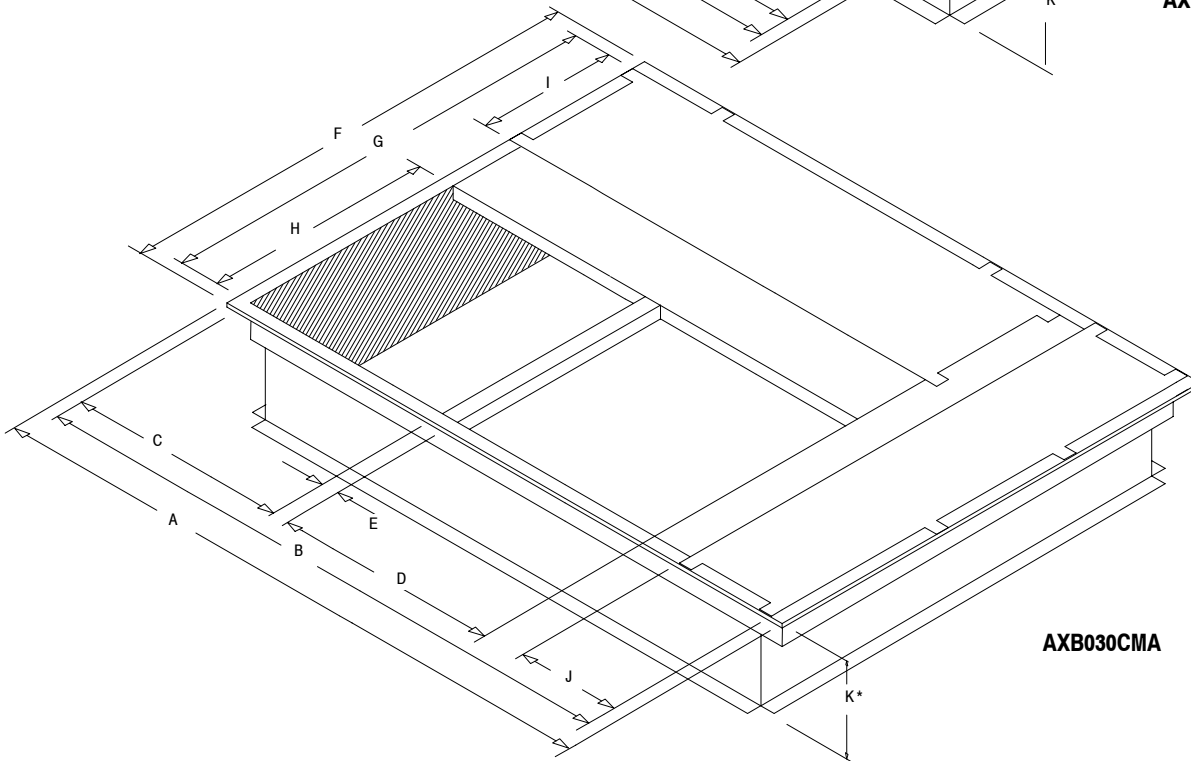
ACCESSORIES: ROOF CURBS

These curbs are designed specifically for use with our combination gas/electric units. They are constructed of heavy gauge steel and designed for water tight installation.

Description	Mainline Model Number	Used on
8"	AXB020CLA	2 to 3 Ton
	AXB030CLA	3-1/2 to 5 Ton
14"	AXB020CMA	2 to 3 Ton
	AXB030CMA	3-1/2 to 5 Ton
24"	AXB020CHA	2 to 3 Ton
	AXB030CHA	3-1/2 to 5 Ton



AXB020CMA



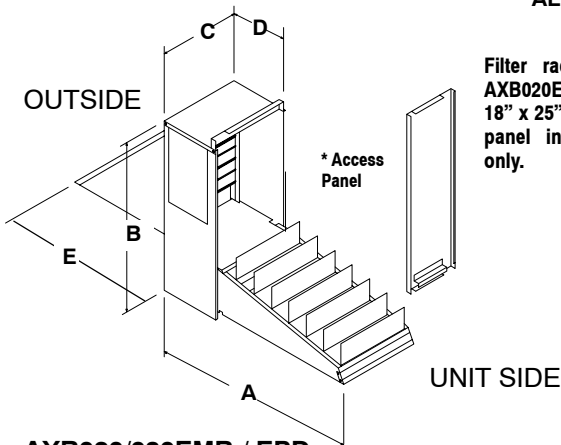
AXB030CMA

ROOF CURB DIMENSIONS (INCHES)

Model No.	A	B	C	D	E	F	G	H	I	J	K(CLA)	K(CMA)	K(CHA)
AXB020	42-3/4	39-3/4	18	18	3-3/4	42-3/4	39-3/4	18	-	-	8	14	24
AXB030	67-3/4	64-3/4	23	23	2-1/2	42-3/4	39-3/4	23	12	12	8	14	24

ECONOMIZERS/DOWNFLOW

ALL DIMENSIONS IN INCHES



Filter racks are included with AXB020E**. Economizers require 18" x 25" x 1" or 2" filters. Access panel included with AXB030E** only.

**AXB020/030EMB / EPD
(Modulating or Three Position)**

Economizer Model No.	A	B	C	D	E
AXB020EMC/PD	29	27-1/2	12-3/4	10-7/8	22
AXB030EMC/PD	35	31	14-3/4	10-7/8	22

Description	Model Number	Used on
Fully Modulating	AXB020EMC (1)	2 to 3 Ton
Three Position	AXB020EPD (2)	
Entry Level Three Position	AXB020ECA (3)	

NOTES:

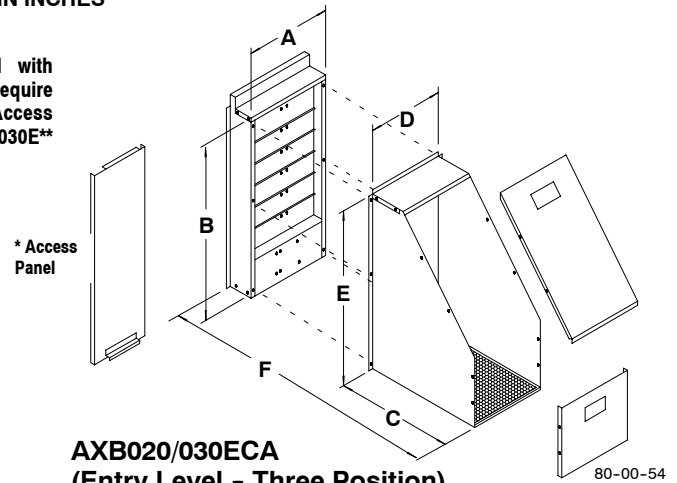
- (1) - Ambient/Enthalpy Control; Includes Return Air Damper & Relief Damper.
- (2) - Ambient Control Only; Includes Return Air Damper & Relief Damper.
- (3) - Ambient Control Only; No Return Air Damper; No Relief Damper.

All Economizers Feature Enthalpy and/or ambient temperature control providing outdoor air ventilation and "free cooling" when outdoor conditions are favorable.

Return Air and Pressure Relief dampers for proper air balance, on most models.

Interconnecting wiring furnished.

Center controlled dual action dampers with gaskets to provide proper seal.



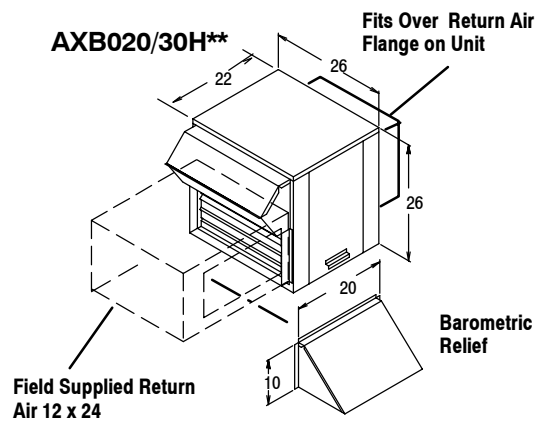
**AXB020/030ECA
(Entry Level - Three Position)**

Economizer Model No.	A	B	C	D	E	G
AXB020ECA	12-3/4	27-1/2	20-1/4	11	28-1/2	24
AXB030ECA	14-3/4	31	20-1/4	13	30	24

Description	Model Number (*)	Used on
Fully Modulating	AXB030EMC (1)	3-1/2 to 5 Ton
Three Position	AXB030EPD (2)	
Entry Level Three Position	AXB030ECA (3)	

- * On AXB030, Filters not supplied. Filter retainers and filters can be ordered thru Service Parts, retainer part number 1054517.t Filters (20x30x2) part number 1054503.

ECONOMIZERS/HORIZONTAL



Description	Model Number	Used on
Fully Modulating (1)	AXB020HEC	2 to 3 Ton
Three Position (2)	AXB020HPD	

Description	Model Number	Used on
Fully Modulating (1)	AXB030HEC	3-1/2 to 5 Ton
Three Position (2)	AXB030HPD	

NOTES:

- (1) - Ambient/Enthalpy Control; Includes Return Air Damper & Relief Damper.
- (2) - Ambient Control Only; Includes Return Air Damper & Relief Damper.

ACCESORIES (CONT...)

OUTDOOR AIR DAMPERS

Description	Model Number	Used on
Manual - 25%	AXB020FAC	2 to 3-1/2 TON
	AXB030FAC	4 to 5 TON
Motorized - 25%	AXB020FMC	2 to 3-1/2 TON
	AXB030FMC	4 to 5 TON

FILTER RACK - must use with outdoor air dampers

Description	Model Number	Used on
* Downflow	AXB020FKA	2 to 3-1/2 TON
* Horizontal	AXB020FHC	2 to 3-1/2 TON

* Requires 1 field supplied 18 x 25" filter.

COIL PROTECTION

Used on	Mainline Part Number / Service Parts Number *	Used on
Coil Guard (Black, 1 piece)	1149591	2 TON
Coil Guard (Black, 2 pieces)	AXB020CGB / 1149485	2 to 3-1/2 TON
Coil Guard (Black, 3 pieces)	AXB030CGB / 1149486	4 to 5 TON
Coil Guard (Black, 2 pieces)	AXB020HGB / 1068133	2 to 3-1/2 TON
Coil Guard (Black, 3 pieces)	AXB030HGB / 1068134	4 to 5 TON

* Available through Service Parts **only**.

FOSSIL FUEL CONVERSION (0' to 2000')

Description	Service Parts Number *	Used on Heat Input
Natural to LP Gas	1172663	40, 60, 80 MBTUH
Natural to LP Gas	1172662	100, 120, 140 MBTUH
LP to Natural Gas	1172664	40, 60, 80 MBTUH
LP to Natural Gas	1098575	100, 120, 140 MBTUH

* Available through Service Parts **only**. For High Altitude conversions, see installation instructions.

CONCENTRIC DUCT KITS

Description	Mainline Model Number	Used on
Transition (For Round Duct)	AXB020CTA	2 to 3-1/2 TON
	AXB030CTA	4 to 5 TON
Grille, Flush Mount *	AXB020CFA	2 to 3-1/2 TON
	AXB030CFA	4 to 5 TON
Grille, Step Down *	AXB020CSA	2 to 3-1/2 TON
	AXB030CSA	4 to 5 TON

* Includes grille and diffuser / transition box.

LOW AMBIENT CONTROLS

Description	Model Number *	Used on
To 0° F	1148232	2 to 3-1/2 TON
To 0° F	1148233	4 to 5 TON

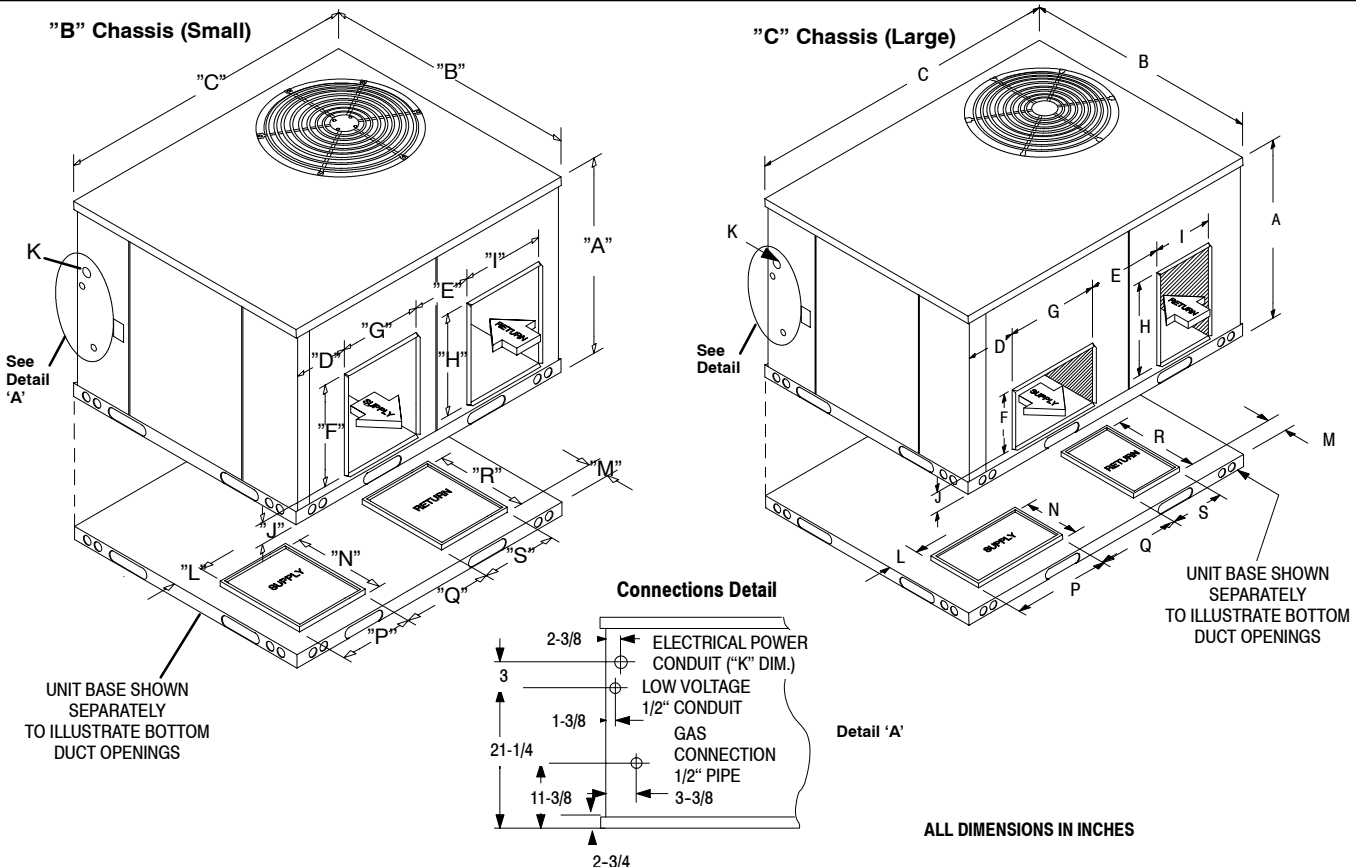
* Available through Service Parts **only**.

INTERNAL FILTERS AND ACCESSORIES

Description	Model Number *	Used on
Filter Retainer (2 Req.)	1054517	4 to 5 TON
Filter (2 Req.)	1054503	4 to 5 TON
Handle, Filter Access Panel	1068209	4 to 5 TON

* Available through Service Parts **only**.

UNIT DIMENSIONS



Model No.	A	B	C	D	E	F	G	H	I	J	K	L	M	N**	P**	Q	R	S	Inside Base Rail
PGCD24-36	32-1/2	47-3/8	47-3/8	3-1/8	11-1/8	12	14-1/4	14-1/4	12	4	3/4 - 1	4-1/4	4-3/8	14-1/2	12-1/4	12-1/8	14-1/4	12-1/4	43-1/8 x 43-1/8
PGCD42-60	36	47-3/8	73	4-5/8	15	12	18-3/4	18-3/4	12	4	1 - 1-1/4	4-1/4	5-1/4	12-1/4	19	15	19	12-1/4	68-3/4 x 43-1/8

* NOTE: The base rail width is 2-1/8 inches, all around base of unit.

MODEL NUMBER IDENTIFICATION GUIDE

MODEL NUMBER	P	G	M	E	24	G	040	E	SALES CODE		
PRODUCT FAMILY P = Single Package								GAS HEAT INPUT			
FUEL (Heating) G = Gas								040 = 40,000	100 = 100,000		
MULTI-POSITION								060 = 60,000	120 = 120,000		
DESIGN SERIES E = 12 SEER								080 = 80,000	140 = 140,000		
MODEL NUMBER	P	G	C	D	24	B	1	K	E	SALES CODE	
PRODUCT FAMILY P = Single Package								ELECTRICAL			
FUEL (Heating) G = Gas								K = 208 / 230-1-60			
DESIGN SERIES C = Low NOx Models								BLOWER OPTIONS			
RESIDENTIAL UNIT INDICATOR D = 12 SEER								1 = Standard Direct Drive			
							GAS HEAT INPUT				
							B = 40,000	E = 100,000			
							C = 60,000	F = 120,000			
							D = 80,000	G = 140,000			
							COOLING CAPACITY (NOMINAL BTUH)				
							24 = 2 Ton, 30 = 2-1/2 Ton, 36 = 3 Ton				
							42 = 3-1/2 Ton, 48 = 4 Ton, 60 = 5 Ton				

GUIDE SPECIFICATIONS

CABINET

The cabinet is made of G-90 galvanized steel, phosphate coated with a tough acrylic finish coat for long lasting weatherproof construction. The base rails are 18 gauge steel with fork lift slots and holes provided for lifting shackles. The unit is designed with convertible airflow for either horizontal or downflow applications with conversion accomplished by relocating two panels. Indoor blower compartment interior cabinet surfaces are insulated with a minimum 3/4" thick, flexible glass insulation, coated on the air side. Aluminum foil faced glass fiber insulation is used in the furnace compartment.

COOLING SECTION

The unit is factory charged and operationally ready upon delivery. The unit refrigerant circuit has a high efficiency fully hermetic compressor with internal overload protection, and copper tube / aluminum fin evaporator and condenser coils. The unit is designed for cooling operation to 40° F and will be capable of being wired for field installed economizer type accessories.

COILS

The evaporator and condenser coils are fabricated with aluminum fins mechanically bonded to copper tubing. Both coils are pressure tested prior to

assembly into the unit and electronically leak tested after assembly into the unit.

CONDENSER FAN

The unit has a single direct-drive propeller-fan / motor assembly. The assembly is mounted directly to a vertical-discharge grille that is easily removed for service. Motors are 1100 RPM with sleeve or ball bearings and internal overload protection.

EVAPORATOR BLOWER

All units have a direct-drive evaporator blower motor as a standard. The direct-drive evaporator blower motor has sleeve bearings and internal overload protection.

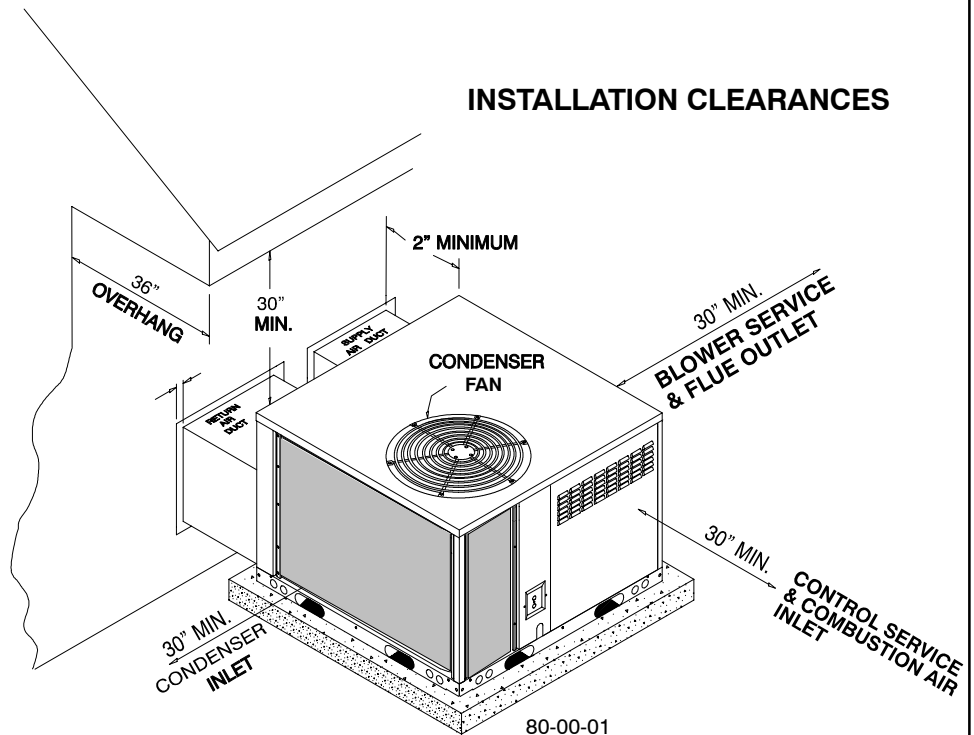
HEATING SECTION

The gas-fired heating section features an induced draft blower for combustion air. The unit has a stainless steel tubular heat exchanger located on the discharge air side of the blower. The system uses in-shot burners ignited by a hot surface pilot ignition system, protected by both a high heat limit switch and flame roll-out switch. The induced draft blower motor is interlocked with a proven air pressure safety device.

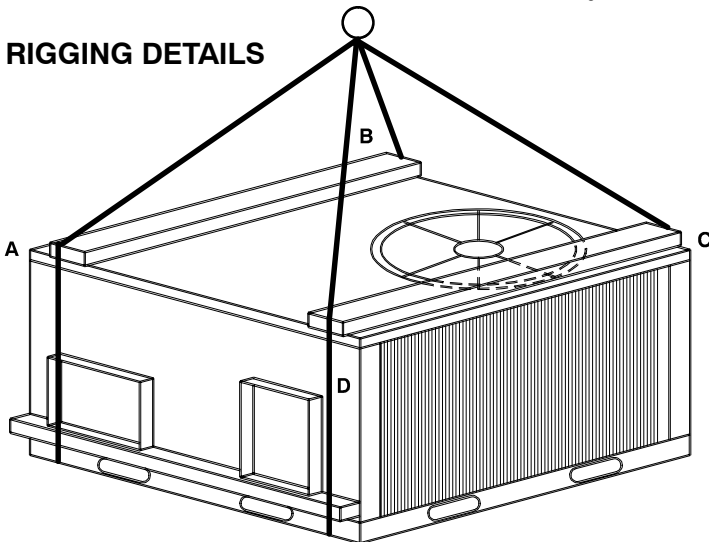
AGENCY CERTIFICATIONS



INSTALLATION CLEARANCES



RIGGING DETAILS



CORNER WEIGHTS (LBS)

MODEL	A	B	C	D	OPERATING WEIGHT TOTAL
PGME24G040 / PGCD24B	81	110	106	79	376
PGME24G080 / PGCD24D	82	111	107	80	380
PGME30G080 / PGCD30D	83	113	113	83	392
PGME36G080 / PGCD36D	89	112	127	101	429
PGME36G100 / PGCD36E	92	114	130	103	439
PGME42G080 / PGCD42D	124	155	155	125	559
PGME42G100 / PGCD42E	125	155	155	125	560
PGME48G080 / PGCD48D	135	166	166	136	603
PGME48G120 / PGCD48F	141	174	174	141	630
PGME60G100 / PGCD60E	140	173	173	140	626
PGME60G140 / PGCD60G	142	176	176	142	636

SPECIFICATION SUBJECT TO CHANGE WITHOUT NOTICE