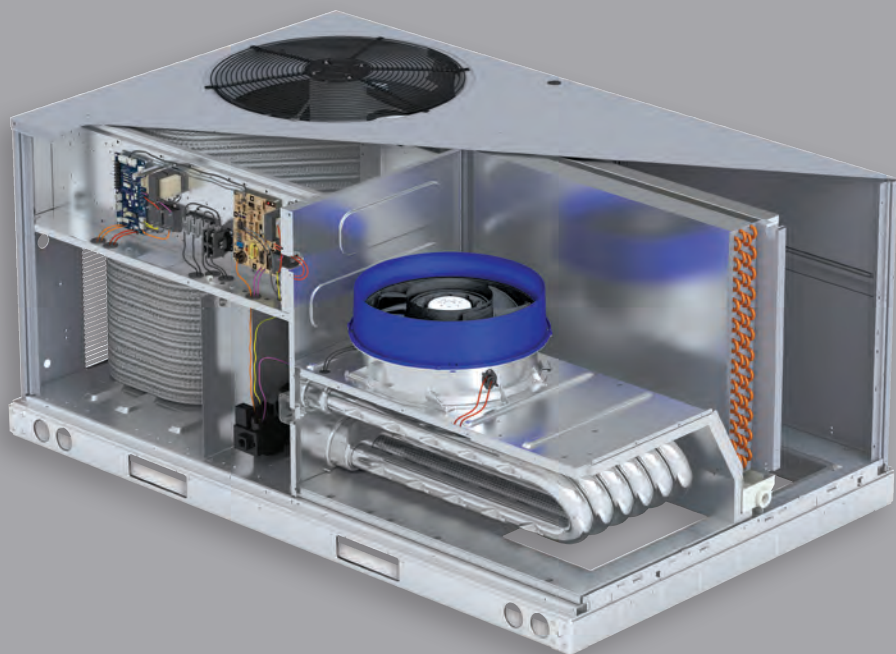




# Commercial Packaged Rooftops with X-Vane™ Fan

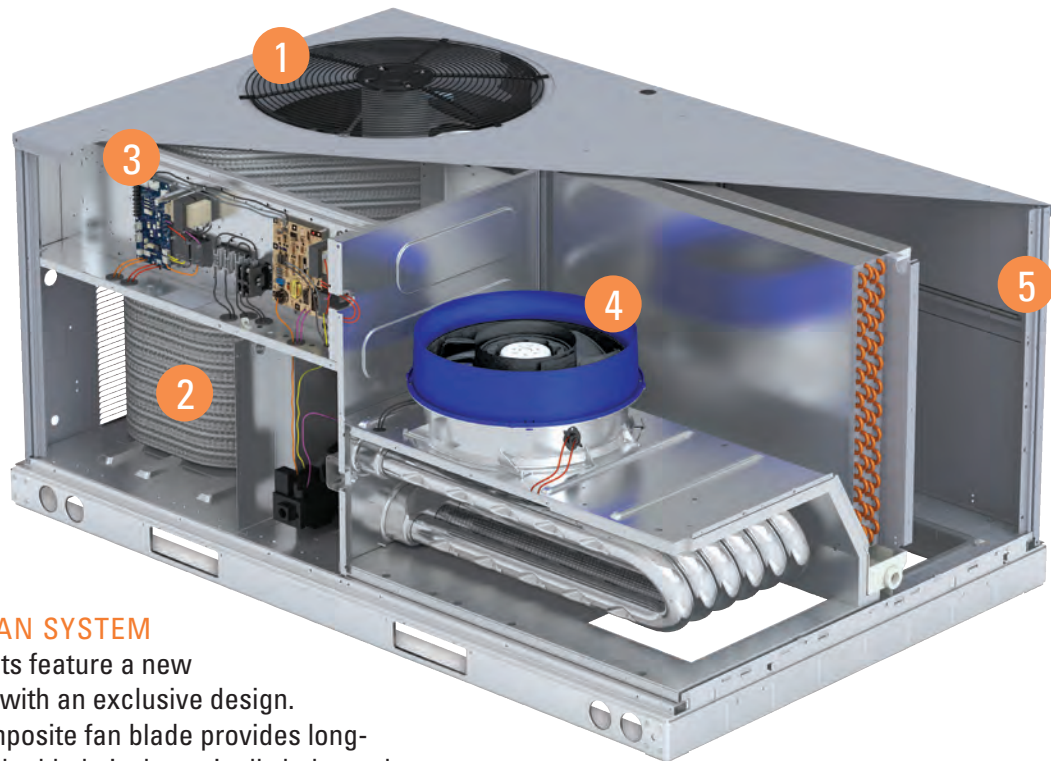


IT'S NOT JUST A FAN, IT'S A TURNING POINT.

# Introducing Airquest Rooftop Units\* with X-Vane™ Fan

Airquest has a long history of bringing reliable heating and cooling products to customers throughout North America. Now, with the introduction of new packaged rooftop units with X-Vane Fans and other innovative features, we've brought a turning point to commercial packaged rooftops.

Airquest packaged rooftops with X-Vane Fans are designed to enhance performance and efficiency while cutting back on maintenance and installation costs. The industry's first beltless direct-drive vane axial fan for rooftop units is just one of many technological advances that make these new rooftops simpler and more efficient. Other improvements include a new intuitive control board and coil technology, new outdoor fan design, tool-less filter access doors and more.



## 1. NEW OUTDOOR FAN SYSTEM

Airquest rooftop units feature a new outdoor fan system with an exclusive design. Its high-density composite fan blade provides long-lasting quality, and the blade is dynamically balanced for quiet operation. Permanently lubricated motor bearings also provide lower maintenance costs.

## 2. UNIT COIL DESIGN

Airquest units operate using a time-tested round tube plate fin condenser coil design. In addition to their proven reliability, the 5/16" copper tube and aluminum fin condenser coils help raise efficiency and reduce the refrigerant charge.

## 3. NEW UNIT CONTROL BOARD

A new control board makes unit fan setup and service easier. The board offers dedicated indoor fan setups with a large field wiring terminal connection, an intuitive speed dial and switch operation. It's so simple that no special training is required for operation.

## 4. NEW INDOOR X-Vane™ Fan

This patent-pending X-Vane Fan technology replaces traditional belt drive fans with a simpler, more compact design that's the first of its kind in the industry for this type of equipment. It delivers quiet operation and reduced operating costs through features including a direct-drive ECM motor and dynamically balanced blade fan.

## 5. TOOL-LESS FILTER ACCESS DOOR

As part of our commitment to designing for simplified maintenance, Airquest has equipped these units with filter access doors that can be opened without tools. This allows quick and easy access to service, check and change filters.

## X-VANE FAN, AN INDUSTRY FIRST IN ROOFTOP UNITS

X-Vane Fans replace belt drive designs with an all-new vane axial indoor fan. This patent-pending technology delivers a simpler, more compact design that you have to see to believe. Features like a direct-drive ECM motor improve efficiency in airflow systems while a dynamically balanced blade provides reliable performance. Additionally, a simplified design helps reduce installation and maintenance costs.



75% fewer moving parts



Intuitive fan speed adjustment controls



Up to 40% more energy efficient



No belts or pulleys



No shaft or shaft bearings

## PERFECT DESIGN AND FIT

We've revolutionized the category by making several innovative changes to our rooftop units. But what we didn't change is just as important. In terms of footprint, we built on an original, using the same Airquest unit design that's been trusted for years. This makes for hassle-free replacement of existing units and keeps installation costs down.

### Same Efficient Unit Design



## EFFICIENCY ACROSS MODELS

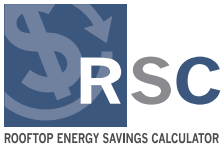
Airquest rooftop units are available in multiple efficiency levels, so you can choose the right option available for varying customer needs and budgets. While efficiency ratings vary, rooftop units are an average of 40 percent more efficient than models built 17 years ago – ensuring reduced operating costs regardless of the selected unit.

## Benefits at a Glance

- High-efficiency operation via innovative fan systems and coil design
- Simplified maintenance due to fewer parts, new control board and tool-less filter access
- Built on the original footprint for cost-effective, hassle-free installation
- Optimum performance with intuitive system controls

## Airquest Rooftop Units Product and System Support

- **Rooftop Energy Savings Calculator:** This fast, simple and free software enables you to determine energy cost savings, payback and life cycle costs for rooftop unit applications.



- **Airquest Rooftops App:** The Airquest Rooftops app allows you to perform on-the-spot selection of rooftop units for both replacement and new construction, and estimate energy savings between Airquest rooftop units.

- **Online Equipment Selection Program:** Create customized submittals using the Equipment Selection Program. The Equipment Selection program allows you to create submittals for engineers, code officials, builders or property owners. It guides you through the process of selecting the right equipment for every application, based on the criteria you enter, matching the best products, factory-installed options and correct accessories for every job.
- **Local Support and Inventory:** Airquest has a range of options to accommodate any size job or application and the inventory to get you the products you need when you need them. Whether it's a replacement or new construction, the place to start is with your Airquest distributor.



AIRQUEST PRODUCTS  
PO BOX 128  
LEWISBURG, TN 37091  
WWW.AIRQUEST.COM



RGV/RAV – 3 to 5 Ton Models  
RGW/RAW – 3 to 5 Ton Models

RGV/RAV - 6 Ton Models

© International Comfort Products 2019

As part of its commitment to quality, International Comfort Products reserves the right to change specifications on its products without notice or without incurring obligations. Illustrations and photographs in this brochure are only representative. Some product models may vary.

401-52-1070-00