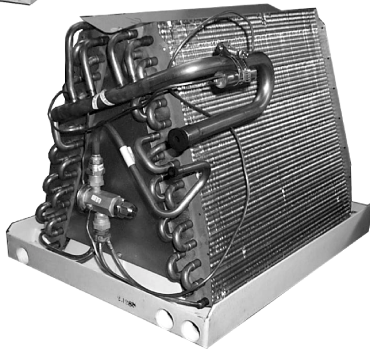


**Models**  
**EEA, EED, EPA, EPD,**  
**EPM, EPP, EXA, EXD,**  
**EXM, & EAH**

# TEMPSTAR®

## Heating and Cooling Products



Representative photo only, some models may vary in appearance.



Rated in accordance with ARI Standard 210. Certification applies only when used with proper components as listed with ARI.



### 1 1/2 THRU 5 TON COILS

#### FEATURES

- Copper Tube/ Lanced Aluminum Fin Coil
- Three Primary Condensate Drain Connections
- Field Selectable Secondary Drain Location
- Polymer Thermoset Drain Pan (Except 5 Ton EXM/EPM Horizontal Pan)
- Sweat Connect
- Dry Air Holding Charge

#### UNCASED Models "A" Coils

- Upflow/Downflow Applications
- EEA, EPA Coils Feature Orifice Pin Refrigerant Metering
- EXA Coils Have Thermostatic Expansion Valves
- Thermostatic Expansion Valve Kit Available for Orifice Pin Coils
- Designed To Match EF Electric Furnaces
- EPP has Extra Length Refrigerant Tubing Stubs
- EPP Designed To fit inside Gas Furnace plenum flanges of 19-1/2" or wider furnace for Upflow Applications.

#### ORIFICE PIN Models "Cased Coils"

- EED - Entry Level Upflow / Downflow
- EPD - Upflow / Downflow
- EPM - Upflow / Downflow / Horizontal
- Orifice Pin Refrigerant Metering
- Upflow Cabinet Widths and Horizontal Cabinet Depths are Matched to 40" & 48" Gas Furnaces
- Cabinet Contains an "Uncased" Type Coil for Rating Purposes
- Internally Lined with Glass Fiber Insulation
- Painted Steel Cabinet
- Removable Front Access Panel

#### EXPANSION VALVE Models "Cased Coils"

- EXD - Upflow / Downflow
- EXM - Upflow / Downflow / Horizontal
- Thermostatic Expansion Valve Refrigerant Metering
- Upflow Cabinet Widths and Horizontal Cabinet Depths are Matched to 40" & 48" Gas Furnaces
- Cabinet Contains an "Uncased" Type Coil for Rating Purposes
- Internally Lined with Glass Fiber Insulation
- Prepainted Steel Cabinet
- Removable Front Access Panel

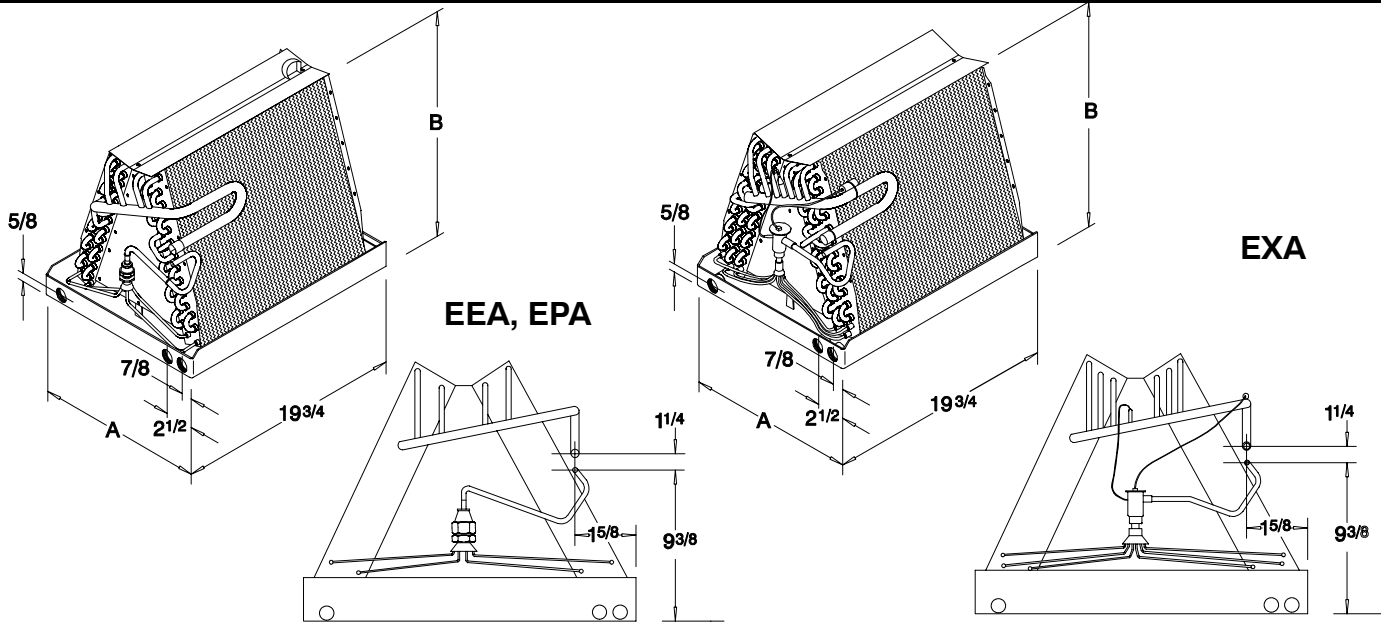
#### Slab Coils

- Horizontal Bi-directional Airflow Applications
- Refrigerant Flow Control Device
- Galvanized G-90 Steel Cabinet
- Cabinet Internally Lined with Glass Fiber Insulation
- Coated One Piece Galvanized Steel Drain Pan

**International Comfort Products Corporation (USA)**  
**651 Heil-Quaker Ave.**  
**Lewisburg, Tennessee 37091**

RESIDENTIAL AND COMMERCIAL SYSTEMS • SPLIT SYSTEMS • PACKAGED AIR CONDITIONERS •  
 COMBINATION GAS / ELECTRIC UNITS • HEAT PUMPS • AIR HANDLERS • MANUFACTURED HOME AIR  
 CONDITIONERS • GAS, OIL AND ELECTRIC FURNACES

## DIMENSIONS - "A" COILS



### "A" COILS, EEA, EPA & EXA

Model No.	Dimensions (inches)		Weights		Refrigerant Control	Connection Sweat	
	A	B	Net	Shpg.		Liq.	Suc.
EEA24B15A (1)	14-3/4	10-1/2 (13-1/2) (1)	14	18	.055	3/8	3/4
EEA30B15A	14-3/4	14-1/2	17	21	.063	3/8	3/4
EEA36B15A	14-3/4	16-1/2	19	23	.067	3/8	3/4
EEA36F19A	18-1/8	16-1/8	22	26	.067	3/8	3/4
EEA42F19A	18-1/8	18-5/8	26	30	.078	3/8	3/4
EEA48F19A	18-1/8	18-1/2	30	34	.079	3/8	7/8
EEA60J22A	21-7/8	21-7/8	40	48	.090	3/8	7/8
EPA18B15A (1)	14-3/4	10-1/2 (13-1/2) (1)	14	18	.051	3/8	3/4
EPA24B15A	14-3/4	14-1/2	17	21	.057	3/8	3/4
EPA24F19A	18-1/8	14-1/2	26	30	.057	3/8	3/4
EXA24B15A	14-3/4	14-1/2	20	25	TXV	3/8	3/4
EXA24F19A	18-1/8	14-1/2	26	30	TXV	3/8	3/4
EPA30B15A	14-3/4	16-1/2	19	23	.065	3/8	3/4
EPA30F19A	18-1/8	16-1/8	22	26	.065	3/8	3/4
EPA36B15A	14-3/4	18-5/8	23	27	.073	3/8	3/4
EPA36F19A	18-1/8	18-5/8	26	30	.073	3/8	3/4
EPA36J22A	21-7/8	18	30	34	.073	3/8	3/4
EXA36F19A	18-1/8	18-1/2	31	35	TXV	3/8	3/4
EXA36J22A	21-7/8	17-1/2	32	37	TXV	3/8	3/4
EPA42F19A	18-1/8	18-1/2	30	34	.078	3/8	7/8
EPA42F19A	18-1/8	18-1/2	30	34	.078	3/8	7/8
EPA42J22A	21-7/8	18	35	40	.078	3/8	7/8
EXA42J22A	21-7/8	22-1/4	38	44	TXV	3/8	7/8
EPA48F19A	18-1/8	20-1/2	33	39	.079	3/8	7/8
EPA48J22A	21-7/8	21-7/8	40	48	.079	3/8	7/8
EPA48N26A	25-1/2	21-7/8	46	53	.079	3/8	7/8
EXA48N26A	25-1/2	26	48	55	TXV	3/8	7/8
EPA60J22A	21-7/8	26-1/4	43	50	.092	3/8	7/8
EPA60N26A	25-1/2	26	43	50	.092	3/8	7/8
EXA60N26A	25-1/2	26	59	68	TXV	3/8	7/8

**NOTE:** (1) EPA18B15A, EEA24B15A have a manifold height of 13 1/2 and they will not fit EF Series electric furnaces.

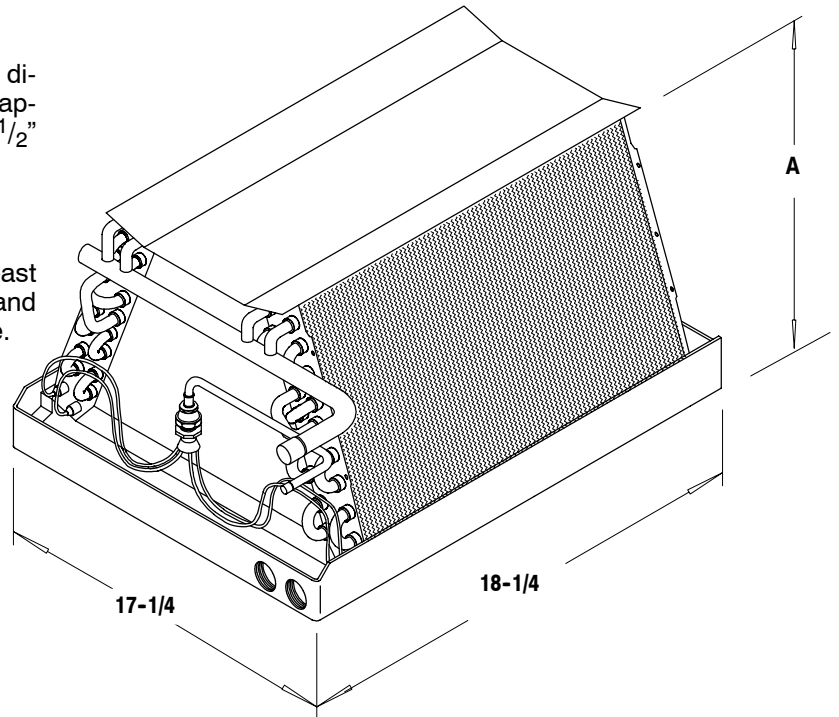
## DIMENSIONS - EPP "A" COILS

### Application Notes:

The plenum coils are designed to be installed directly into the furnace plenum on an upflow application **ONLY**. Minimum plenum size is 18-1/2" deep by 17-5/8" wide.

### Minimum Clearances

Coils must be installed so the drain pan is at least 2" above the heat exchanger on a gas furnace and 5" above the heat exchanger for an oil furnace.



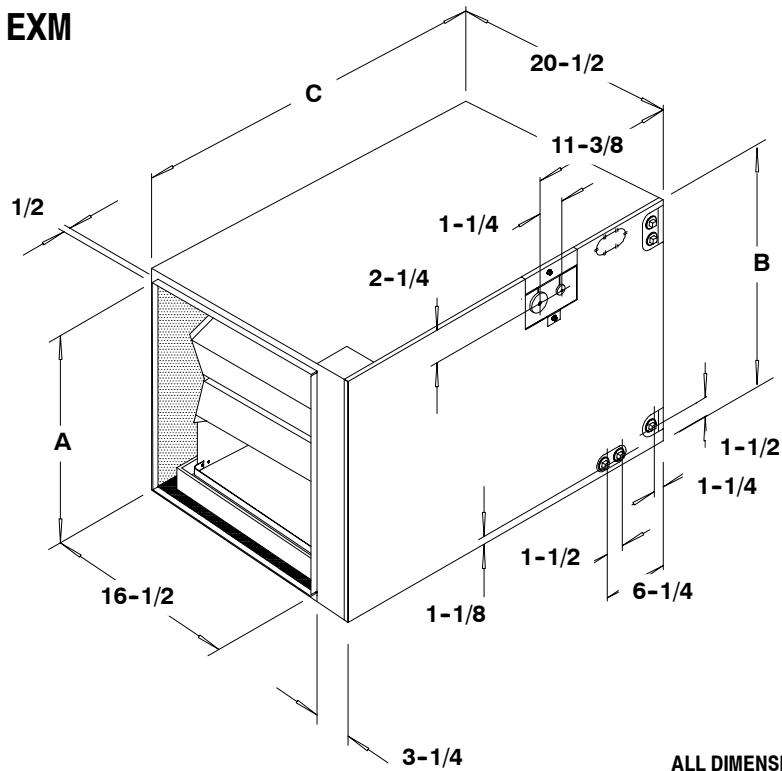
### "A" COILS, EPP

Model No.	Dimensions (inches)	Weights		Refrigerant Control	Connection Sweat	
	A	Net	Shpg.		Liq.	Suc.
EPP024D17A	10-3/4	15	19	.059	5/16	3/4
EPP030D17A	14-1/4	22	26	.065	5/16	3/4
EPP036D17A	16-1/4	26	30	.072	5/16	3/4



**DIMENSIONS - CASED HORIZONTAL COILS - EPM / EXM**

**EPM / EXM**



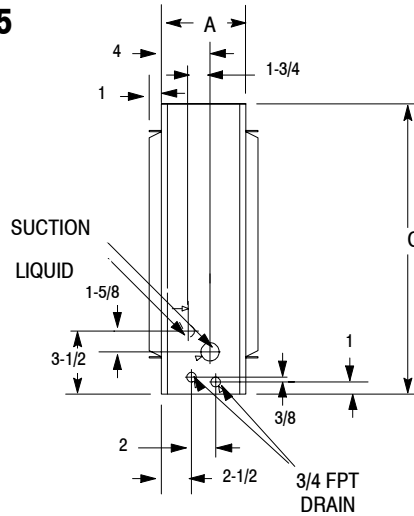
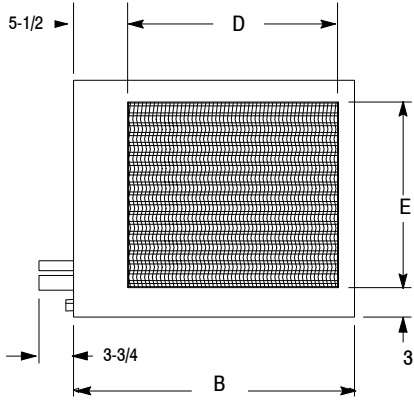
ALL DIMENSIONS IN INCHES

Model No.	Dimensions (Inches)			Weights		Refrigerant Control	Connection	
	A	B	C	Net	Shp		Sweat	
							Liq.	Suc.
EPM24B15A	14	15-1/2	22	27	31	.057	3/8	3/4
EXM24B15A	14	15-1/2	22	33	37	TXV	3/8	3/4
EXM24F19A	17-5/8	19-1/8	22	33	37	TXV	3/8	3/4
EPM30B15A	14	15-1/2	22	29	33	.065	3/8	3/4
EPM30F19A	17-5/8	19-1/8	22	33	37	.065	3/8	3/4
EPM36B15A	14	15-1/2	22	33	37	.073	3/8	3/4
EPM36F19A	17-5/8	19-1/8	22	39	43	.073	3/8	3/4
EPM36J22A	21-1/4	22-3/4	22	38	42	.073	3/8	3/4
EXM36F19A	17-5/8	19-1/8	22	38	42	TXV	3/8	3/4
EXM36J22A	21-1/4	22-3/4	24	39	43	TXV	3/8	3/4
EPM42F19A	17-5/8	19-1/8	22	45	49	.078	3/8	7/8
EPM42J22A	21-1/4	22-3/4	24	50	54	.078	3/8	7/8
EXM42J22A	21-1/4	22-3/4	30	43	48	TXV	3/8	7/8
EPM48F19A	17-5/8	19-1/8	30	47	52	.079	3/8	7/8
EPM48J22A	21-1/4	22-3/4	30	56	62	.079	3/8	7/8
EPM48N26A	24-7/8	26-1/2	30	59	65	.079	3/8	7/8
EXM48N26A	24-7/8	26-1/2	30	78	85	TXV	3/8	7/8
EPM60J22A	21-1/4	22-3/4	33	63	70	.092	3/8	7/8
EPM60N26A	24-7/8	26-1/2	33	78	85	.092	3/8	7/8
EXM60N26A	24-7/8	26-1/2	33	87	96	TXV	3/8	7/8

**DIMENSIONS - HORIZONTAL SLAB COIL**

ALL DIMENSIONS IN INCHES

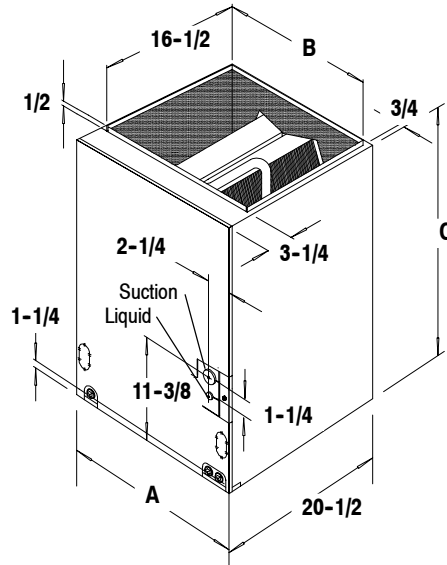
**EAH55**



Model No.	Dimensions					Weights		Refrigerant Control	Connections "S"	
	A Width	B Depth	C Height	D	E	Net	Ship.		Liq.	Suc.
	EAH5524SA	7	22-1/4	24	15-1/8	18	34		40	.057
EAH5536SA	7	28-1/4	24	21-1/8	18	47	54	.073	3/8"	3/4"
EAH5548SA	7	41-3/4	24	34-5/8	18	59	67	.079	3/8"	7/8"
EAH5560SA	7	50-1/2	24	43-1/2	18	69	78	.092	3/8"	7/8"

**DIMENSIONS - ENTRY LEVEL CASD COIL**

**EED Series**



Model No.	Dimensions (Inches)			Weights		Refrigerant Control	Connection	
	A	B	C	Net	Shpg		Liq.	Suc.
EED24B15A	15-1/2	14	15	19	23	.055	3/8"	3/4"
EED30B15B	15-1/2	14	18	27	31	.063	3/8"	3/4"
EED36B15B	15-1/2	14	18	29	33	.067	3/8"	3/4"
EED36F19B	19-1/8	17-5/8	18	34	38	.067	3/8"	3/4"
EED42F19B	19-1/8	17-5/8	20	39	43	.078	3/8"	3/4"
EED48F19B	19-1/8	17-5/8	20	45	49	.079	3/8"	7/8"
EED60J22A	22-3/4	21-1/4	24	56	62	.090	3/8"	7/8"

**PERFORMANCE DATA (CFM vs DRY/WET STATIC @ INCHES WATER COLUMN)**

Model No.	400		500		600		700		800		900		1000		1100		1200		1300		1400	
	Dry	Wet	Dry	Wet	Dry	Wet	Dry	Wet	Dry	Wet	Dry	Wet	Dry	Wet	Dry	Wet	Dry	Wet	Dry	Wet	Dry	Wet
EP(A,D)18B	.06	.08	.09	.12	.13	.16	.18	.20	.23	.26												
EP(A,D)24B,F					.11	.12	.14	.15	.18	.19	.23	.23	.27	.29								
EPM24B					.12	.13	.17	.18	.20	.22	.25	.28	.30	.34								
EPP24D			.14	.17	.18	.21	.23	.25	.28	.31	.33	.37										
EX(A,D)24B,F					.13	.16	.17	.20	.22	.26	.28	.33	.34	.40								
EXM24B,F					.15	.18	.20	.23	.26	.30	.32	.37	.38	.44								
EEA,EED24B15			.09	.12	.13	.16	.18	.20	.23	.26	.28	.32										
EAH5024 / 5524			.06	.13	.10	.17	.13	.20	.17	.24	.21	.28	.25	.32								
EP(A,D)30B									.18	.22	.22	.27	.28	.33	.33	.39	.39	.46				
EPM30B									.20	.23	.26	.29	.30	.35	.36	.43	.42	.50				
EP(A,D)30F									.13	.17	.16	.20	.19	.24	.22	.28	.26	.33				
EPM30F									.14	.19	.17	.23	.20	.27	.24	.31	.28	.36				
EEA,EED30B15					.11	.12	.14	.15	.18	.19	.23	.23	.27	.29	.32	.35						
EPP030D					.12	.13	.15	.16	.19	.20	.24	.24	.28	.30								
EP(A,D)36B									.18	.20	.22	.24	.27	.30	.32	.37	.37	.44	.43	.50	.50	.59
EPM36B									.19	.22	.24	.29	.29	.34	.35	.40	.42	.47	.48	.55	.55	.63
EP(A,D)36F,J													.19	.21	.21	.24	.25	.28	.29	.33	.33	.37
EPM36F,J													.19	.23	.22	.27	.25	.31	.29	.35	.34	.40
EPP036D								.19	.23	.23	.28	.29	.34	.34	.40	.40	.47					
EX(A,D)36F											.18	.21	.21	.26	.25	.30	.29	.36	.34	.41		
EXM36F											.19	.22	.23	.27	.28	.32	.32	.37	.37	.42		
EX(A,D)36J													.14	.20	.16	.23	.18	.26	.21	.30	.21	.33
EXM36J													.16	.23	.19	.27	.22	.31	.25	.36	.29	.41
EEA,EED36B15									.18	.22	.22	.27	.28	.33	.33	.39	.39	.46				
EEA,EED36F19									.13	.17	.16	.20	.19	.24	.22	.28	.26	.33				
EAH5036 / 5536											.12	.16	.15	.19	.18	.22	.21	.25	.24	.28	.27	.31
EEA,EED42F													.19	.21	.21	.24	.25	.28	.29	.33	.33	.37
EP(A,D)42F													.21	.27	.25	.32	.29	.37	.33	.43	.33	.49
EPM42F													.22	.27	.26	.33	.30	.38	.35	.44	.40	.50
EP(A,D)42J													.18	.23	.21	.27	.24	.31	.26	.35		
EPM42J													.18	.24	.20	.28	.24	.33	.26	.36		
EX(A,D)42J													.19	.23	.22	.27	.26	.31	.30	.35	.34	.40
EXM42J													.18	.23	.21	.27	.24	.31	.28	.36	.33	.41

Model No.	1000		1100		1200		1300		1400		1500		1600		1700		1800		1900		2000	
	Dry	Wet	Dry	Wet	Dry	Wet	Dry	Wet	Dry	Wet	Dry	Wet	Dry	Wet	Dry	Wet	Dry	Wet	Dry	Wet	Dry	Wet
EP(A,D)48F			.20	.25	.23	.29	.27	.35	.32	.40	.36	.46	.41	.52	.47	.58						
EPM48F			.20	.25	.25	.30	.28	.36	.34	.41	.38	.49	.43	.53	.50	.60						
EP(A,D)48J					.21	.25	.24	.28	.28	.33	.31	.37	.35	.42	.38	.46						
EPM48J					.22	.27	.25	.32	.29	.36	.33	.40	.37	.45	.41	.51						
EP(A,D)48N					.17	.23	.20	.27	.23	.30	.26	.34	.28	.40	.32	.42						
EPM48N					.18	.23	.21	.28	.24	.31	.27	.35	.30	.39	.33	.44						
EX(A,D)48N					.17	.22	.20	.25	.22	.28	.25	.31	.27	.34								
EXM48N					.23	.26	.26	.29	.29	.33	.32	.37	.35	.41								
EEA,EED48F19	.21	.27	.25	.32	.29	.37	.33	.43	.33	.49												
EAH5048 / 5548					.11	.14	.12	.15	.14	.17	.15	.18	.17	.20	.19	.22	.21	.24	.22	.25	.24	.27
EP(A,D)60J									.16	.19	.18	.21	.21	.26	.28	.29	.26	.34	.30	.38	.34	.43
EPM60J									.21	.25	.24	.29	.27	.33	.30	.37	.33	.41	.37	.46	.40	.51
EP(A,D)60N											.20	.24	.23	.28	.25	.31	.28	.35	.31	.38	.35	.43
EPM60N											.20	.24	.22	.28	.25	.31	.28	.35	.31	.38	.34	.42
EX(A,D)60N									.18	.22	.21	.25	.24	.29	.27	.34	.30	.38	.34	.42	.37	.47
EXM60N									.19	.24	.22	.27	.25	.31	.28	.35	.32	.39	.36	.44	.40	.49
EEA,EED60J22					.21	.25	.24	.28	.28	.33	.31	.37	.35	.42	.38	.46						
EAH5060 / 5560													.12	.16	.14	.18	.16	.20	.17	.21	.20	.24

### MODEL NUMBER IDENTIFICATION GUIDE - A COILS

<b>EVAPORATOR</b>	<b>E</b>	<b>P</b>	<b>A</b>		<b>36</b>	<b>B15</b>	<b>A</b>	<b>Revision Code</b>
E = Entry Level Orifice Pin P = Orifice Pin X = TXV								<b>Cabinet / Drain Pan Width</b> B15 = 15 1/2" Cabinet / 14 3/4" Drain Pan F19 = 19 1/8" Cabinet / 18 1/8" Drain Pan J22 = 22 3/4" Cabinet / 21 7/8" Drain Pan N26 = 26 3/8" Cabinet / 25 1/2" Drain Pan
A = Loose Coil, No Cabinet D = Dual Purpose, Upflow / Downflow M = Multi Purpose, Upflow / Downflow / Horizontal P = Plenum Coil								<b>Nominal Capacity</b> 18 = 1 1/2 Ton, 24 = 2 Ton, 30 = 3 1/2 Ton 36 = 3 Ton, 42 = 3 1/2 Ton, 48 = 4 Ton, 60 = 5 Ton

### MODEL NUMBER IDENTIFICATION GUIDE - SLAB COILS

<b>MODEL NUMBER</b>	<b>E</b>	<b>A</b>	<b>H</b>		<b>55</b>	<b>36</b>	<b>S</b>	<b>A</b>	<b>REVISION CODE</b>
<b>PRODUCT FAMILY</b> E = Evaporator Coil									<b>CONNECTIONS</b> S = Sweat
<b>PRODUCT TYPE</b> A = A Slab Coil									<b>CAPACITY - BTU</b> 036 = 36,000
<b>COIL TYPE</b> H = Horizontal									<b>Series 55 = 5500</b>