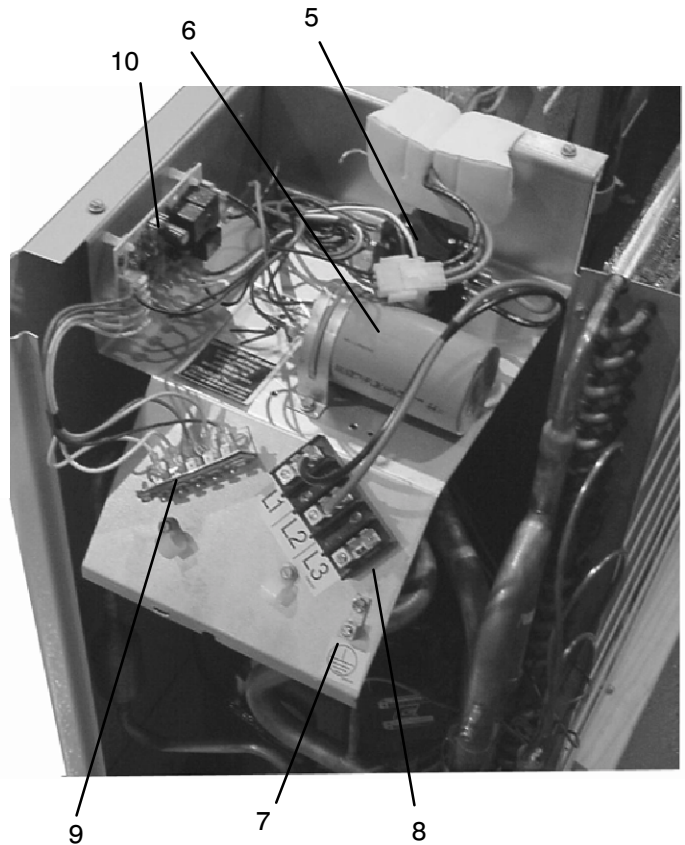
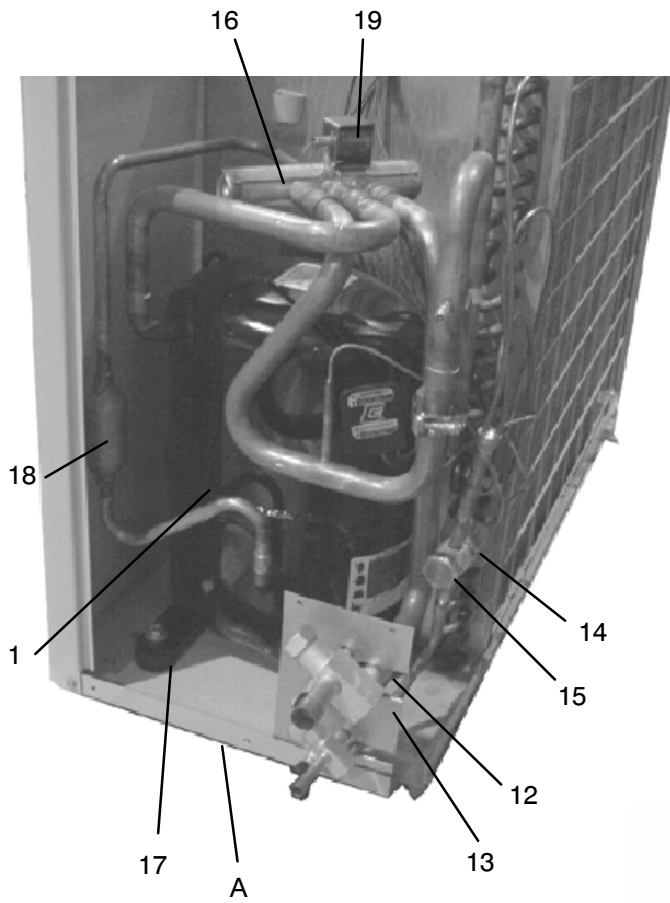
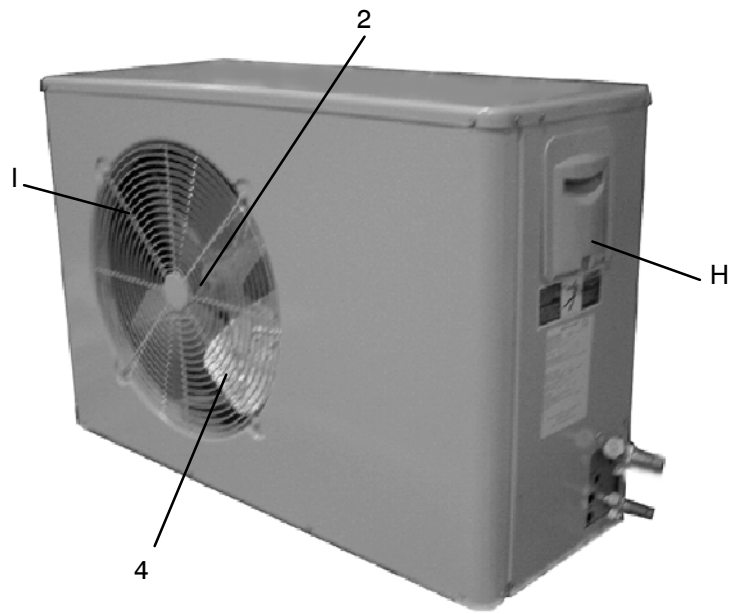
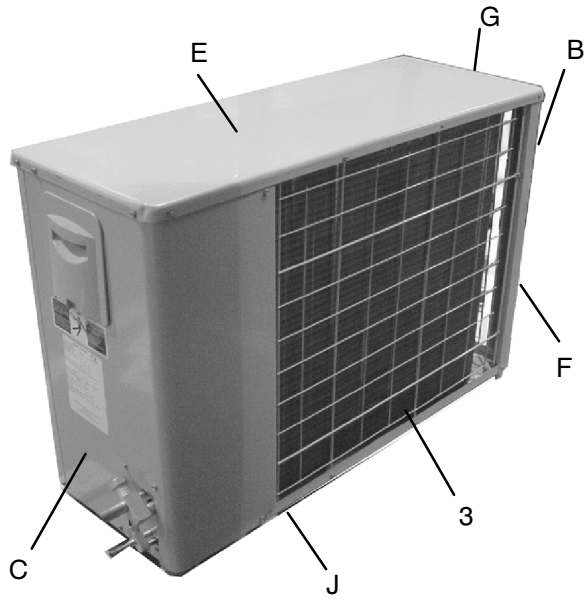


HDCH SERIES HEAT PUMPS, 3 PHASE, 50 Hz



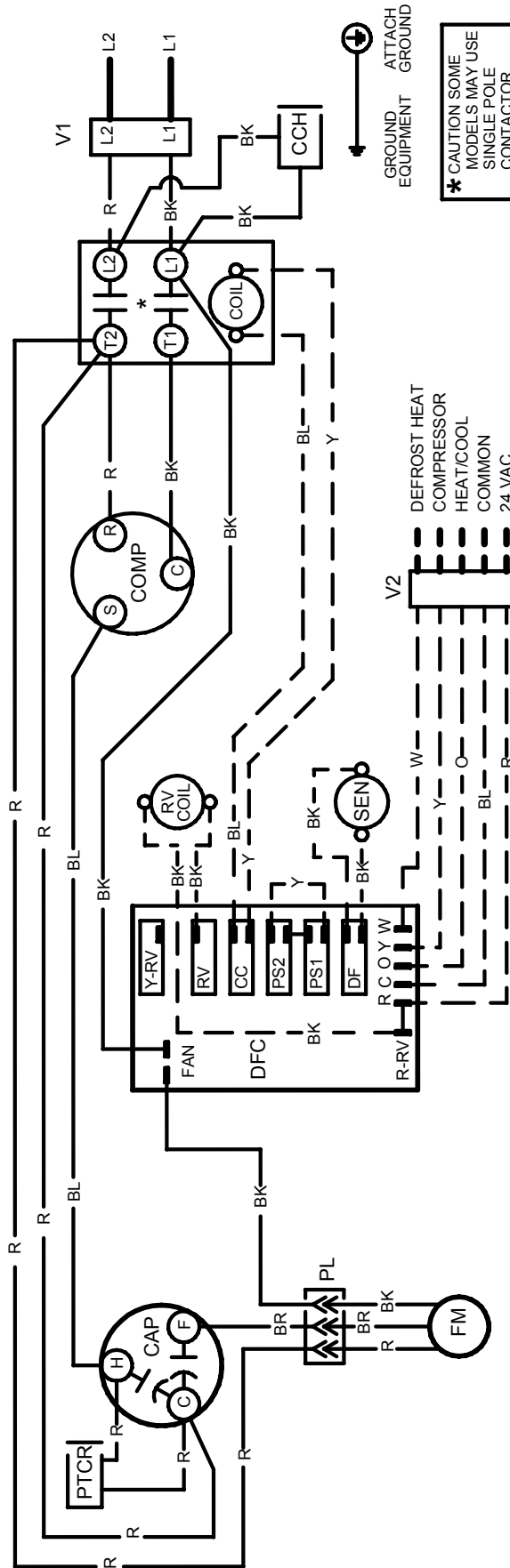
HDCH SERIES HEAT PUMPS, 3 PHASE, 50 Hz

KEY NO.	DESCRIPTION	PART NUMBER	HDCH36VWA1 HCBY36VWA1
1	Compressor	CR42K6PFZ135	1
2	Motor, Cond. Fan	1100051	1
3	Condenser W/Dist,Txv,Liq.valve.	1113549	1
4	Fan Blade	1100026	1
5	Contacto, 40 Amp, 2 Pole	1059574	1
6	Capacitor, 370 Volt 5/60 Mfd	1113507	1
7	Lug, Ground	91590	1
8	Block, Terminal	1100046	1
9	Board, Low Voltage	612254	1
10	Control, Defrost	1069364	1
12	Service Valve, (Suction)	1080980	1
13	Service Valve, (Liquid)	1081000	1
14	Sensor, Defrost	1082738	1
15	Valve, TXV	1081728	1
16	Valve Reversing	1080947	1
17	Grommet, Compressor	1053188	4
18	Muffler	2319457	1
19	Coil, Reversing Valve	34329055	1
20	Plug, Compressor Harness	1081939	1
A	Panel, Base	1100000	1
B	Post, Corner	1100022	1
C	Panel, Rear/Side	1100023	1
D	Panel, Front	1100020	1
E	Panel, Top	1100001	1
F	Grille, Rear	1100045	1
G	Grille, Side	1100044	1
H	Cover, Electrical Access	1100034	1
I	Grille, Cond. Fan	1100030	1
J	Rail, Base	1100002	3
)	Restrictor, .069	1113506	1
)	Manual, Parts List	50604110400	1

HDCH SERIES HEAT PUMPS, 3 PHASE, 50 Hz

CONNECTION DIAGRAM

DANGER: ELECTRICAL SHOCK HAZARD DISCONNECT POWER BEFORE SERVICING



LEGEND

C	CONTACTOR	PL	PLUG (WHEN USED)
CAP	CAPACITOR	PTCR	PTCR START DEVICE (WHEN USED)
CCH	CRANKCASE HEATER (WHEN USED)	RV	REVERSING VALVE
COMP	COMPRESSOR	SEN	OUTDOOR COIL
DFC	DEFROST CONTROL	LAR	TEMPERATURE SENSOR
FM	FAN MOTOR	DFR	LOW AMBIENT RELAY
LP/HP	LOW OR HIGH PRESSURE SWITCH (WHEN USED)	LAS	DEFROST RELAY
			LOW AMBIENT SWITCH

COLOR CODE

BK	BLACK	O	ORANGE
BL	BLUE	R	RED
BR	BROWN	V	VIOLET
GY	GRAY	W	WHITE
G	GREEN	Y	YELLOW

FOR USE WITH COPPER CONDUCTORS ONLY

V1 HIGH VOLTAGE TERMINAL
V2 LOW VOLTAGE TERMINAL



CAUTION: NOT SUITABLE FOR USE ON SYSTEMS EXCEEDING 150 VOLTS TO GROUND.

1100136-B