



ECO-DRIVE™

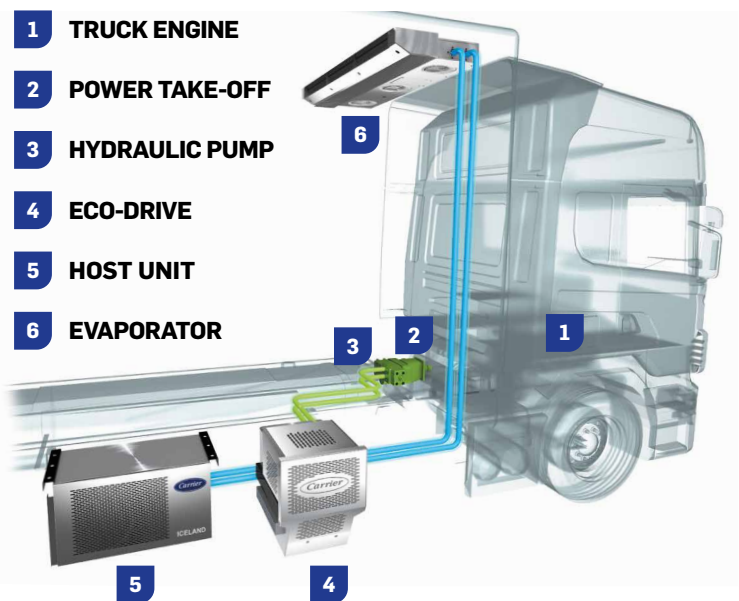
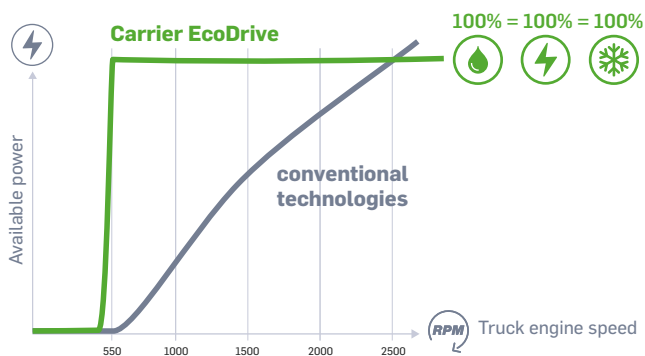
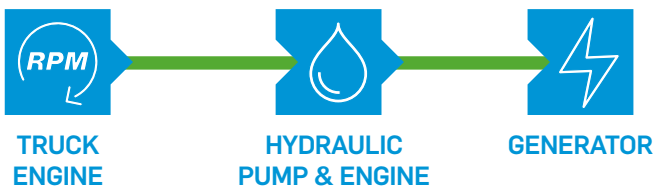
**FREE YOUR REFRIGERATION FROM
EMISSIONS, WHILE OPTIMIZING
OPERATING COSTS**

Carrier
TRANSICOLD

The Eco-Drive power module

Carrier Transicold is committed to providing refrigerated solutions that support a healthy, safe, sustainable and intelligent cold chain that delivers perishables with confidence. The Eco-Drive range is a flexible option that can be fitted to nearly all vehicle types, models, or brands, while improving overall sustainability for fleets. This engineless solution helps our customers meet the current environmental standards and regulations.

The Eco-Drive is a power module that uses hydro-electric technology. The hydro-electric pump is connected to the truck's power take-off motor to deliver electrical power to the refrigeration unit. This module maintains constant power, even when the truck is idling in heavy traffic.



KEY BENEFITS

Sustainable option:
low emissions (reduction of CO₂, NoX and particle matter)



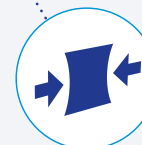
Compliant with regulations on vehicle emissions: uses Euro 6 engines



Low noise:
ideal for urban distribution when coupled with PIEK certified units (under 60 dB(A))



Smaller design to fit on any vehicle



Reduced fuel consumption:
no engine



Flexible for nearly all vehicle types, models or brands



Reduced maintenance and improved uptime



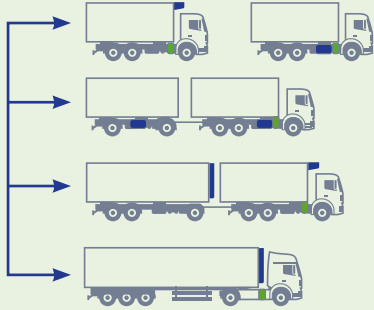
100% cooling capacity even at low speed



FLEXIBLE AND UNIVERSAL

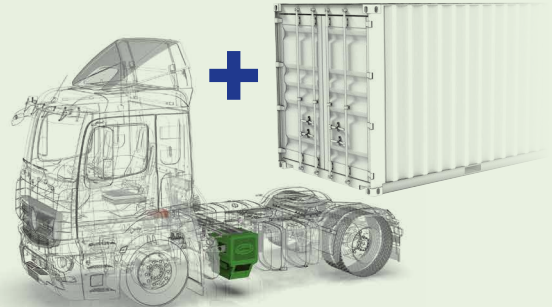
We have an Eco-Drive unit for any application and purpose. The Eco-Drive range allows for great flexibility as it can be used for various applications and will answer the needs of customers operating mixed fleets with different units, models, vehicle types and brands.

Can fit new and existing vehicles



Contact your local salesperson for all possible applications, technical realisation and retrofit

Industrial applications



Contact your local salesperson for all possible applications such as: container, pump for liquid gas, mobile cranes or mobile concrete pumps.

IDEAL FOR ANY APPLICATION

Suited for intensive use with multiple stops and door openings, the Eco-Drive range is the ideal solution for urban distribution...



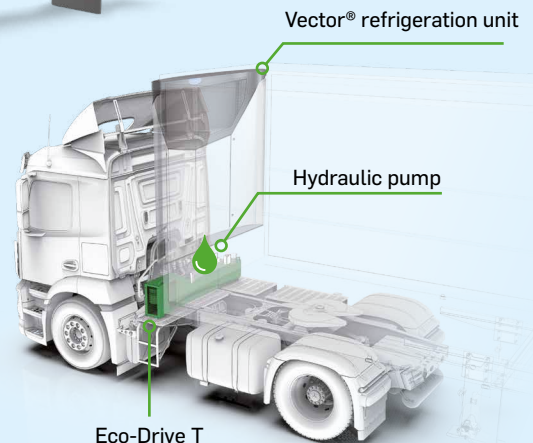
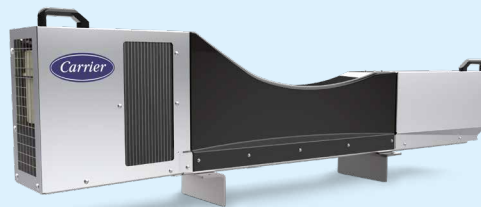
... but its flexibility makes it a complete solution that will adapt to any application, with long haul and mixed fleet, to container refrigeration unit as well.

ECO-DRIVE T 25/30

The compact power generation unit for your multiple unit application

The Eco-Drive T is a power module fitted behind the cabin. It has been designed for Carrier Engineless reefer units and its compactness makes it ideal for vehicles where there is no space underneath the chassis. This solution can feature additional tank for gas applications and allows 6x2 trucks applications*.

* Subject to technical study



Eco-Drive T

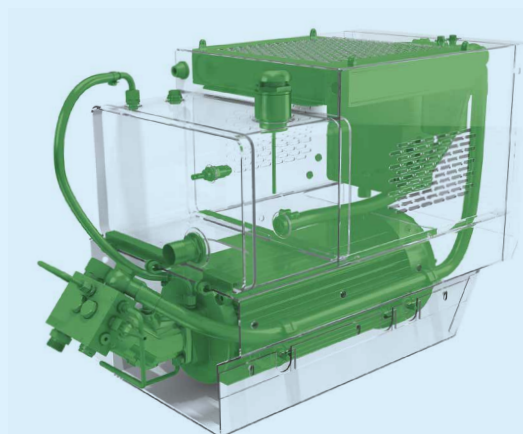
A SUSTAINABLE SOLUTION FOR URBAN REGULATIONS

Growing environmental concerns in urban areas

As regulation on vehicle emissions is getting tougher and Green Deals increasingly coming into effect in Europe, Carrier Transicold answers with a comprehensive and environmentally sustainable range of Eco-Drive units specifically designed to help eco-responsible transport professionals meet the rigors of doing business in urban areas.

Euro VI Technology

Our solution is compatible with all Euro VI technology: Diesel, CNG/LNG & Ethanol. This gives the opportunity to cut emissions and maintenance costs, while improving fuel efficiency.



SPECIFICATIONS

Model	Volt (V)	Current (max.) (A)	Output (max.) (kVA)	Frequency (Hz)	Dimensions (HxWxD)	Weight (kg)
Eco-Drive 25-30	400 / 460	30	25	50 / 62	600x500x735 mm	140
Eco-Drive T 25-30	400 / 460	30	25	50 / 62	559x2229x317 mm	150
Eco-Drive 35-40-45	400 / 460	45	35	50 / 62	685x500x735 mm	240



IT'S NEVER BEEN EASIER TO GIVE YOUR FLEET AN EDGE

- MORE THAN 600 SERVICE CENTERS
- MORE THAN 2200 TECHNICIANS
- 24/7 ASSISTANCE JUST ONE CALL AWAY
- A FULL SERVICE MAINTENANCE AGREEMENT



Follow us



Carrier Transicold Europe S.C.S.
3, rue Joseph Monier
Immeuble Cristalia
92500 Rueil-Malmaison - France
Phone: +33 (0)1 41 42 28 00
www.carriertransicold.eu