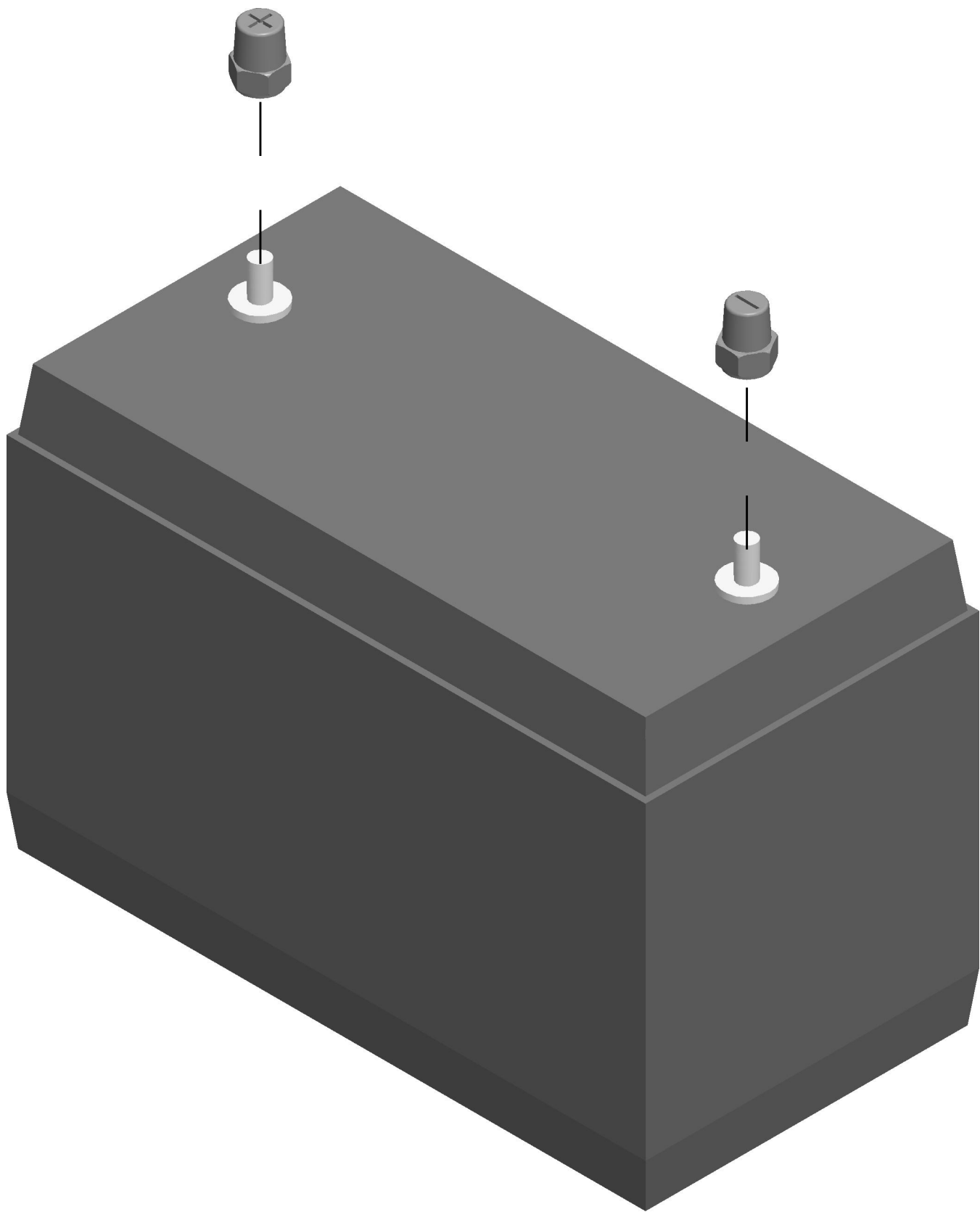


OIL FILTER & ACTION LINE DECAL INSTRUCTIONS

- 1.0 PRIOR TO STARTING UNIT REMOVE AND DISCARD EXISTING ENGINE OIL
FILTER AND INSTALL NEW EXTENDED LIFE OIL FILTER. CHECK OIL
LEVEL AFTER RUNNING UNIT AND ADD AS REQUIRED TO BRING OIL
LEVEL TO FULL.
- 2.0 LOCATE SUITABLE LOCATION FOR CARRIER TRANSCOLD ACTION LINE
DECAL ON INSIDE OF ENGINE SIDE FRONT DOOR. SURFACE AREA WHERE
DECAL IS TO BE APPLIED MUST BE CLEAN AND DRY.

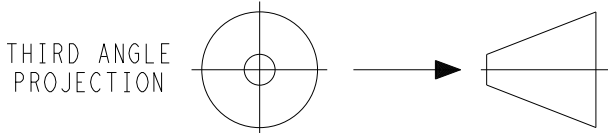


BATTERY INSTALLATION INSTRUCTIONS

- 1.0 IF INSTALLING A STUD POST BATTERY THEN THE CONVERSION CONNECTOR
BATTERY POSTS NEED TO BE INSTALLED ON THE BATTERY.
- 2.0 IDENTIFY THE POSITIVE AND NEGATIVE CONVERSION CONNECTORS AND
INSTALL ON THE CORRESPONDING BATTERY STUD POST. TORQUE TO
10-12 FT-LBS. DO NOT OVER-TORQUE. DOING SO CAN RESULT IN
TERMINAL POST BREAKAGE.
- 3.0 INSTALL BATTERY IN UNIT USING EXISTING BATTERY HOLDDOWN HARDWARE
AND THEN INSTALL BATTERY TERMINALS. INSTALL POSITIVE CABLE FIRST
THEN THE NEGATIVE CABLE.



B	ADDED INSTRUCTIONS FOR OIL FILTER AND ACTION LINE DECAL.	12JUL2019	ZMG			72N0230P19
A	INITIAL RELEASE.	07 JUL 17	ZMG			72N0259P17
SYM	REVISION RECORD	DATE	BY	ENGR.	M.E.	NPCA NO.



IMPERIAL INCH FORMAT:
UNLESS OTHERWISE SPECIFIED
DIMENSIONS ARE IN INCHES WITH
METRIC CONVERSIONS IN [MILLIMETERS]

TITLE
INSTALLATION INSTRUCTION
VECTOR 1550

SHEET INDEX	REV				REV
	SHEET	1	2	3	
					B

DRAWING NO.
98-03371
SHEET 1 of 3

SUPERSEDES: _____

PART CLASSIFICATION: US EAR99

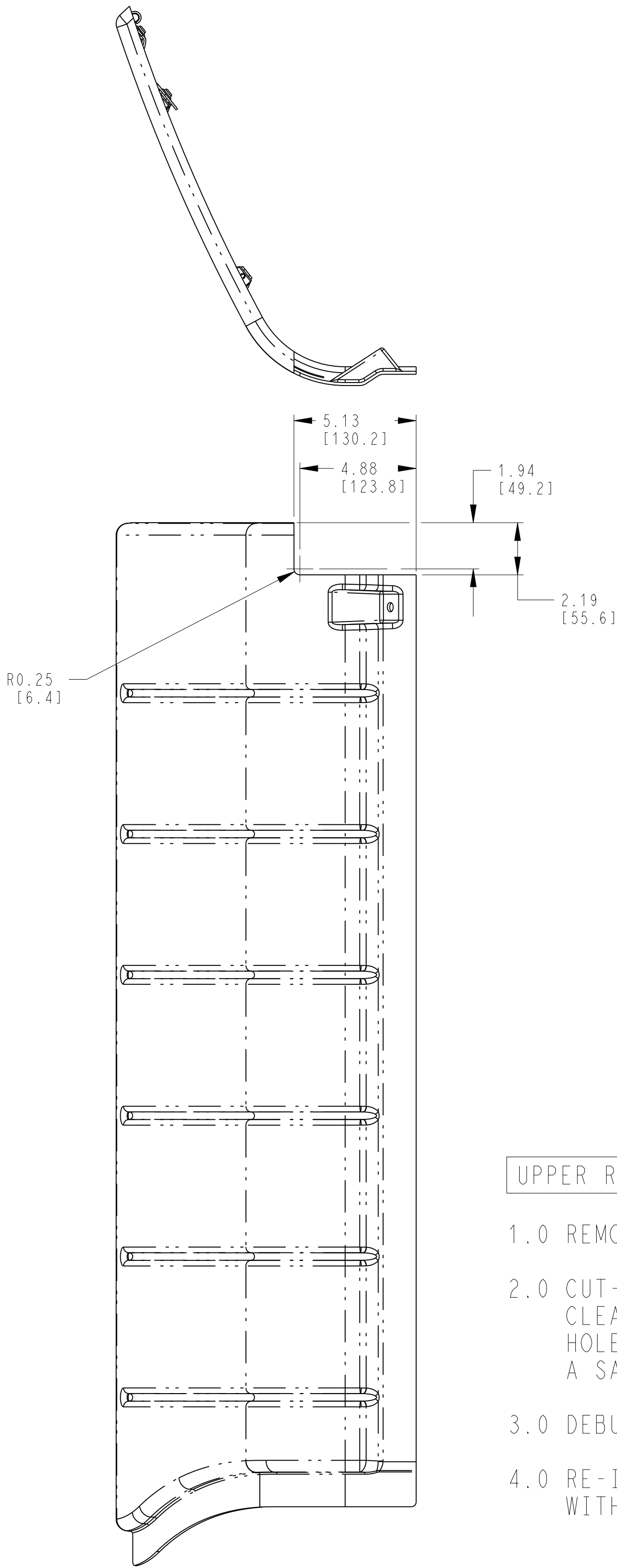
DRAWING CLASSIFICATION: US EAR99



Carrier Transicold Division
Carrier Corporation
P.O. Box 4805
Syracuse, New York 13221

THIS DOCUMENT AND THE INFORMATION CONTAINED THEREIN IS
PROPRIETARY TO CARRIER CORPORATION AND SHALL NOT BE USED
OR DISCLOSED TO OTHERS, IN WHOLE OR IN PART, WITHOUT THE
WRITTEN AUTHORIZATION OF CARRIER CORPORATION.

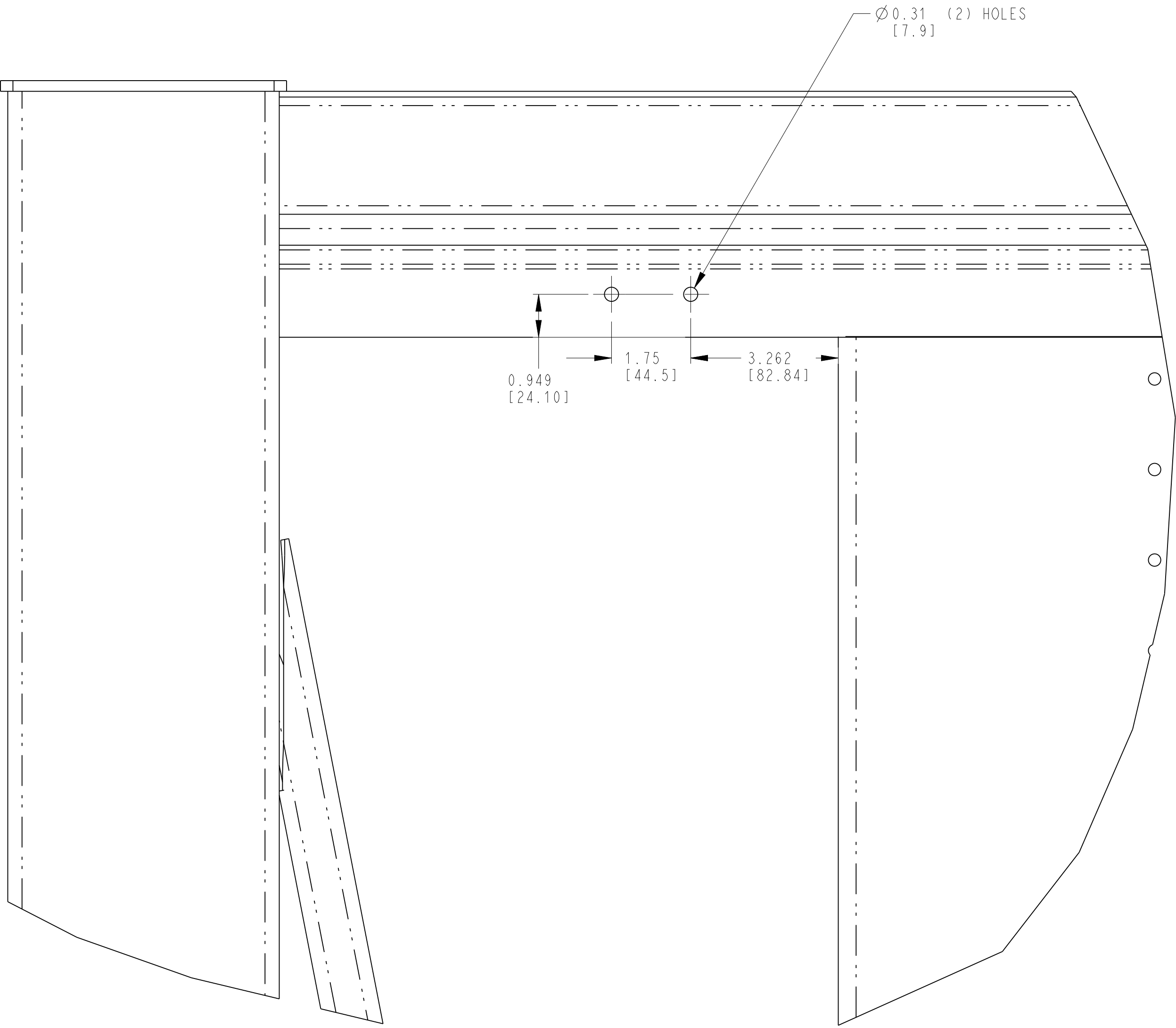
SUBMISSION OF THESE DRAWINGS OR DOCUMENTS
DOES NOT CONSTITUTE PART PERFORMANCE OR
ACCEPTANCE OF CONTRACT



UPPER ROADSIDE DOOR MODIFICATION INSTRUCTIONS

- 1.0 REMOVE UPPER ROADSIDE DOOR.
- 2.0 CUT-OUT CORNER AS INDICATED PER DIMENSIONS TO PROVIDE DOOR SWING CLEARANCE FOR EXHAUST OUTLET PIPE. LOCATE AND DRILL 0.50 [12.7MM] DIA HOLE, MARK CUT LINES FROM EDGE OF PART TO TANGENT OF HOLE. THEN USING A SAW OR CUTTING TOOL CUT ALONG LINES TO CREATE CUT-OUT.
- 3.0 DEBURR CUTOUT WITH FILE OR SANDPAPER TO REMOVE ANY JAGGED EDGES.
- 4.0 RE-INSTALL DOOR AND OPEN AND CLOSE DOOR TO ENSURE NO CONTACT ISSUES WITH EXHAUST PIPE.

ROADSIDE DOOR MODIFICATION VIEW



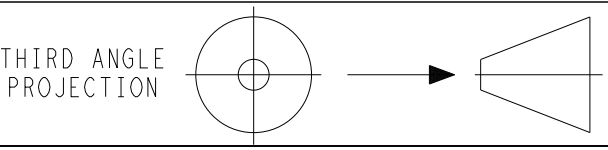
EXHAUST BRACKET MOUNTIG HOLES VIEW

SCALE 0.500

EXHAUST BRACKET MOUNTING HOLES INSTRUCTIONS

- 1.0 FROM FACE OF UNIT MOUNTING SURFACE AND BOTTOM OF UPPER CHASSIS SKIRT MEASURE AND LOCATE HOLE LOCATIONS BY MARKING AND CENTERPUNCHING LOCATIONS FOR DRILLING.
- 2.0 DRILL (2) 0.31 (5/16") HOLES. DEBURR HOLE EDGES TO ENSURE FLAT MOUNTING SURFACES FOR BRACKET AND HARDWARE.

A	INITIAL RELEASE.	07 JUL 17	ZMG			72N0259P17
SYM	REVISION RECORD	DATE	BY	ENGR.	M.E.	NPCA NO.



IMPERIAL INCH FORMAT:
UNLESS OTHERWISE SPECIFIED
DIMENSIONS ARE IN INCHES WITH
METRIC CONVERSIONS IN [MILLIMETERS]

TITLE
INSTALLATION INSTRUCTION
VECTOR 1550

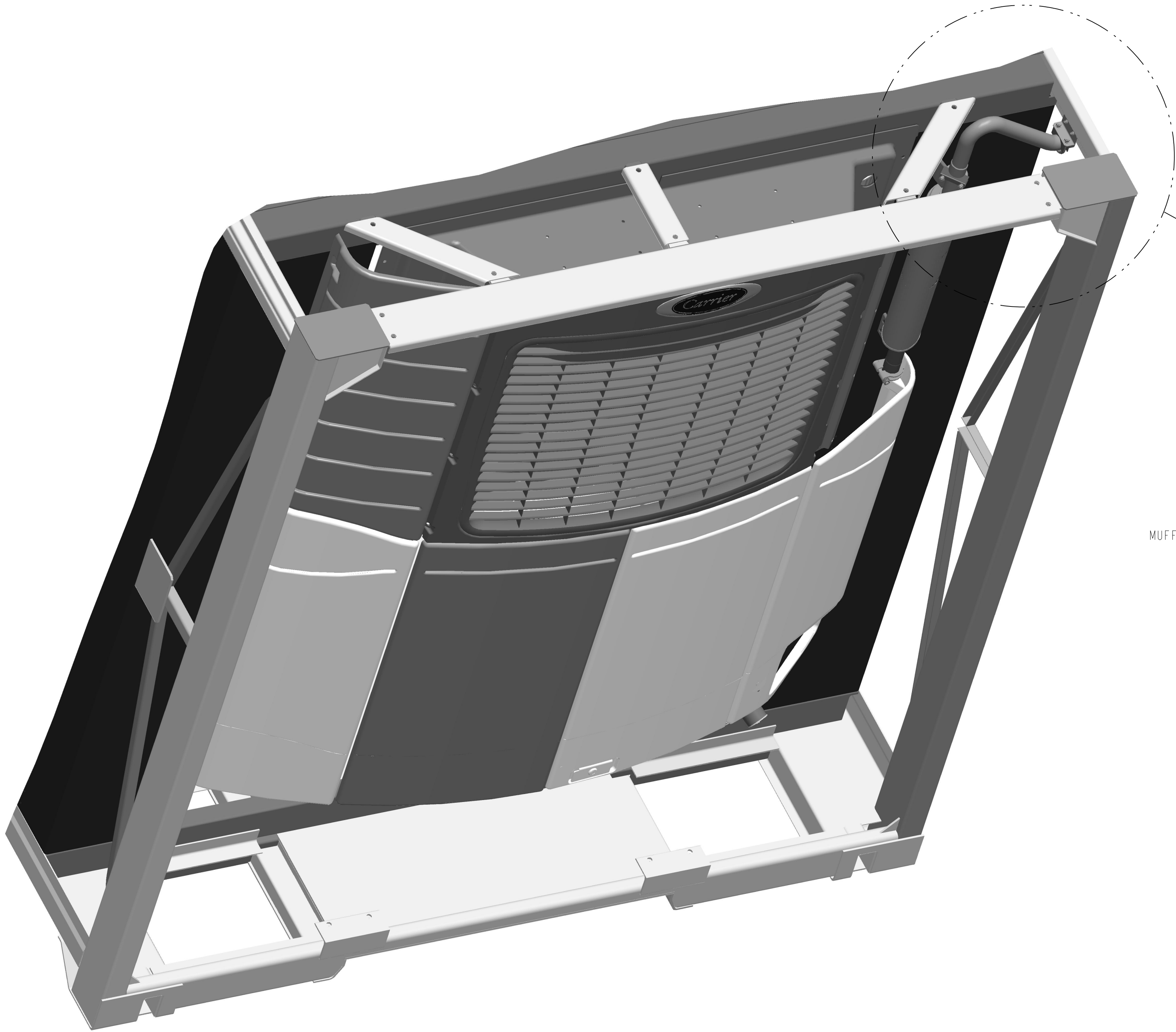
DRAWING NO.
98-03371
SHEET 2 OF

REV
A

SUPERSEDES:

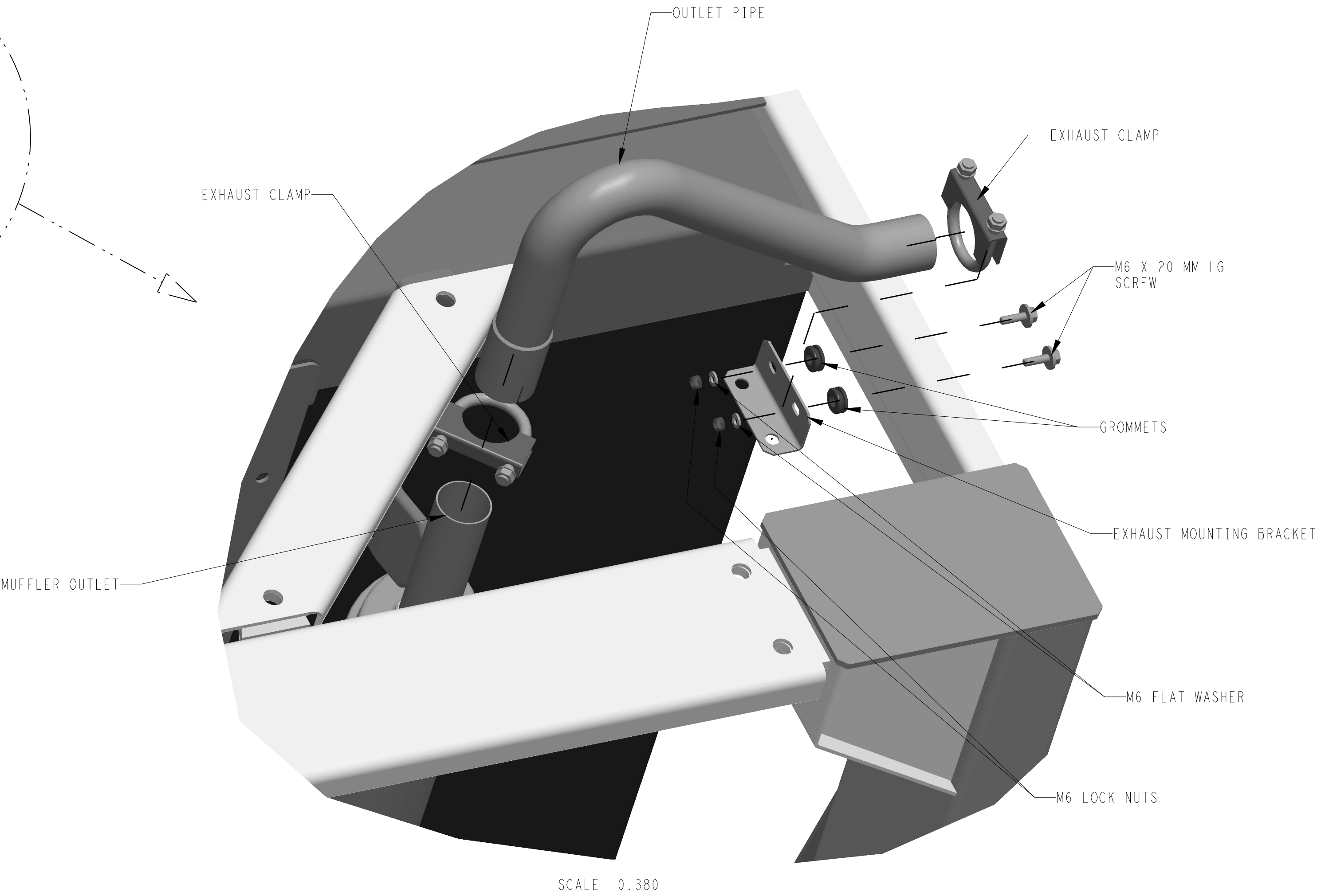
PART CLASSIFICATION: US EAR99

DRAWING CLASSIFICATION: US EAR99



EXHAUST OUTLET INSTALLATION VIEW

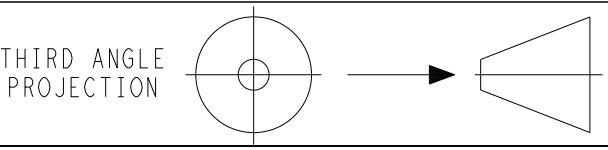
DOOR REMOVED FOR CLARITY



EXHAUST INSTALLATION INSTRUCTIONS

- 1.0 OPEN ROADSIDE UPPED DOOR AND INSTALL EXHAUST CLAMP AND EXHAUST OUTLET PIPE ONTO MUFFLER OUTLET. ORIENTATE PIPE OUTLET TO THE SIDE ON THE CHASSIS. DO NOT TORQUE CLAMP AT THIS TIME.
- 2.0 LOOSELY INSTALL MOUNTING BRACKET ONTO EXHAUST CLAMP AND THEN SLIDE ONTO OUTLET PIPE AND ORIENTATE PIPE SO THAT THE MOUNTING BRACKET HOLES ALIGN WITH DRILLED HOLES IN THE CHASSIS. MOUNT BRACKET WITH M6 X 20 MM LONG SCREWS, GROMMETS, M6 FLAT WASHERS AND M6 LOCK NUTS. GROMMETS TO BE LOCATED BETWEEN CHASSIS MEMBER AND BRACKET AND SECURED IN PLACE BY M6 HARDWARE. TORQUE MOUNTING BRACKET HARDWARE (M6 SCREWS AND NUTS) TO 6-8 FT-LBS.
- 3.0 SLOWLY AND EVENLY TIGHTEN EXHAUST CLAMP AT MOUNTING BRACKET CHECKING OUTLET PIPE TO MAKE SURE PIPE IS NOT BINDING. OPEN AND CLOSE UPPER DOOR TO ENSURE OUTLET PIPE DOES NOT INTERFERE WITH DOOR. TORQUE CLAMP TO 15-20 FT-LBS.
- 4.0 ORIENTATE EXHAUST CLAMP SO THAT IT DOES NOT INTERFERE WITH DOOR IN CLOSED POSITION OR OTHER COMPONENTS. TORQUE CLAMP TO 15-20 FT-LBS. CLOSE DOOR.

A	INITIAL RELEASE.	07 JUL 17	ZMG			72N0259P17
SYM	REVISION RECORD	DATE	BY	ENGR.	M.E.	NPCA NO.



IMPERIAL INCH FORMAT:
UNLESS OTHERWISE SPECIFIED
DIMENSIONS ARE IN INCHES WITH
METRIC CONVERSIONS IN [MILLIMETERS]

TITLE
INSTALLATION INSTRUCTION
VECTOR 1550

DRAWING NO.
98-03371
SHEET 3 of

REV
A

SUPERSEDES: _____

PART CLASSIFICATION: US EAR99

DRAWING CLASSIFICATION: US EAR99