

Improving Cross-Border Shipping Visibility

IoT Real-Time Cargo Monitoring Empowers Supply Chain Planning and Strategy



A Carrier Company



Any Time, Any Where Real-Time Visibility

For the food industry, almost all shipments at some point go over the road whether it is from a field to a cooler, from a manufacturer to a distribution center, or from that distribution center to stores. Unexpected delays and events while in transit happen all the time—late departure from origins, driver shortages, traffic, weather and other events can occur without warning. If that same shipment must also cross through a border it adds another component of potential disruption and lack of predictability on arrival.

While some border crossings are making food transportation more fluid so that delays do not impact the product's critical time-to-market, more recently there have been increases in delays and unexpected wait times at a border.

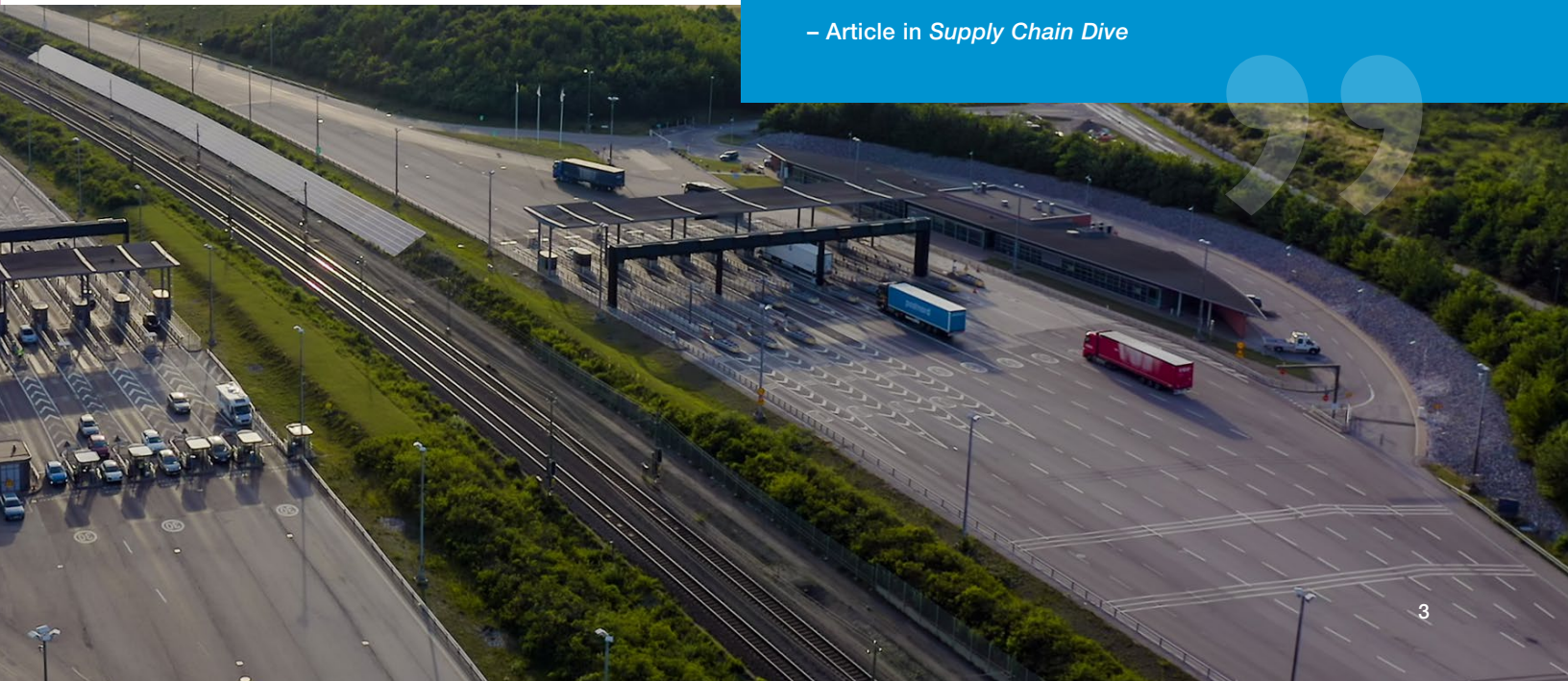
Knowing where your cargo is can help mitigate the impact of delays and help proactively manage your supply chain strategy.

“

IoT is likely to provide the **next generation** of track-and-trace: faster, more accurate and predictive and more secure.

– Article in *Supply Chain Dive*

”



Make Your Supply Chain Smarter...

IoT-based cargo tracking sensors can make your supply chain smarter by providing the comprehensive cargo visibility you need. This is particularly helpful with cross-border logistics, as these devices—with the real-time in-transit data they generate—can give companies the power to overcome some of their largest international shipping challenges.

Here are seven top gains when leveraging real-time IoT devices to help manage cross-border challenges and issues.

01 **Resolve Lack of Visibility**

Oftentimes, with cross-border shipments, there will be multiple carriers that don't share or communicate in-transit data effectively. With IoT device-based sensors that travel with your cargo, you can always know where your shipments are, regardless of whom or where your carriers are. This level of visibility can be of great value when there is extended dwell time at borders that could delay time-sensitive shipments.

03 **Monitor Cargo Condition**

The food supply chain has greater challenges than other industries because product quality is dependent on time-to-market and maintaining the product condition while in transit. Disruptions or delays in moving products efficiently through the supply chain can result in reduced quality and shelf life, which in turn can impact customer satisfaction, inventory management and brand reputation.

02 **Gain Access to Critical Data**

Instead of relying on multiple carriers and other supply chain partners for information, with IoT devices you gain direct access to the location of your shipments and know if there are delays that will impact your supply chain. Without the ability to get real-time information, supply chain professionals are left uncertain regarding where their cargo is and when it will be delivered. This is challenging when crossing borders, as delays can't be managed properly if they are not discovered early.

04 **Assess and Mitigate Risks**

Having in-transit information can help you manage delays and schedule changes so that you can optimize your operations. This is important for order management and logistics teams that need up-to-date information on a cargo's status. If you know a shipment is delayed at a border crossing you can manage expectations on arrival times and potentially divert other shipments to another route.



05 **Get Immediate Notification**

Alerts can keep you apprised of your shipments locations from end-to-end. Late departure alerts can help you anticipate if your shipment is going to arrive at a border crossing at peak traffic time. Alerts can also let you know when a shipment has arrived or departed a border crossing area, so you can assess if the shipment is on schedule.

06 **Analyze Supply Chain Partner Performance**

Capturing data in real-time as shipments are in transit helps you assess where and when issues have occurred. Historical performance statistics can identify challenges with routes and specific supply chain partners to overall in-transit operations. Understanding what routes and partners are having the most success and managing border crossing delays and issues can help save time, reduce waste and avoid disappointing customers.

07 **Implement a Global Solution**

The food industry is a global one and border crossings are inevitable. Having a solution that monitors and tracks across the globe is critical so that you can manage longer shipments and multiple border crossings consistently. IoT devices seamlessly move from one country to the next, constantly capturing and communicating data for the entire shipment duration.

Know Where Your Cargo is at any Given Moment

With a real-time solution, you can manage the challenges that can come with global cross-border shipments. An IoT device based solution can be implemented quickly, without a large scale project and will gain value immediately by making your supply chain more transparent, efficient and resilient.

Sensitech's proven cold chain and logistics expertise, global reach and advanced real-time sensor technology can help you tackle your on-time cargo delivery challenges, especially as you ship across borders.

Our services and products provide the real-time visibility you need to manage shipments in transit and drive operational improvements.

We Can Provide You with:

- End-to-end visibility
- Real-time intelligence
- Proactive control
- Transparent context
- Quick program implementation
- Global support

Contact us to find out how we can help you eliminate the complexity of in-transit cargo tracking through real-time visibility for every step in your supply chain.

CORPORATE HQ

+1 800-843-8367

+1 978-927-7033

sensitech.clientservices@carrier.com

EMEA REGIONAL HQ

+31 (0) 252 211 108

sensitech.clientservicesEMEA@carrier.com



About Sensitech

Sensitech Inc. is a global leader in delivering supply chain visibility solutions. Our innovative monitoring products and services help to maintain the quality, integrity and security of our customers' valuable products at every step in their journey, all around the world. For 30 years, leading companies in the food, pharmaceutical, industrial, consumer goods and other industries have relied on Sensitech to help protect their products—and their bottom lines.



[sensitech.com](https://www.sensitech.com)



A Carrier Company

Sensitech Inc. • Global Headquarters • 800 Cummings Center • Suite 258X • Beverly, MA 01915-6197
1-800-843-8367 • +1-978-927-7033 • Fax: +1-978-921-2112 • clientservices@sensitech.com

© 2020 Sensitech Inc. All Rights Reserved.