



TECHNICAL INSTRUCTIONS

Carrier Corporation (“Carrier”) shall have no obligation or responsibility (including product warranty obligations) with respect to (a) any third-party components not supplied by Carrier, (b) non-compliant installations of Carrier components or (c) configurations of Carrier components that differ from Carrier’s recommended configurations. Further, Carrier provides these instructions as a courtesy only, and on an as-is basis. By using these instructions, you acknowledge and agree that use of these instructions is at your own risk.

Door Switch Magnet (12-00921-02) Modification

Models: X4 and Vector

Purpose: The intent of this technical instruction is to provide guidelines for modifying the 12-00921-02 magnet for applications where the vertical mounting leg is not utilized and is mounted with a customer supplied bracket.

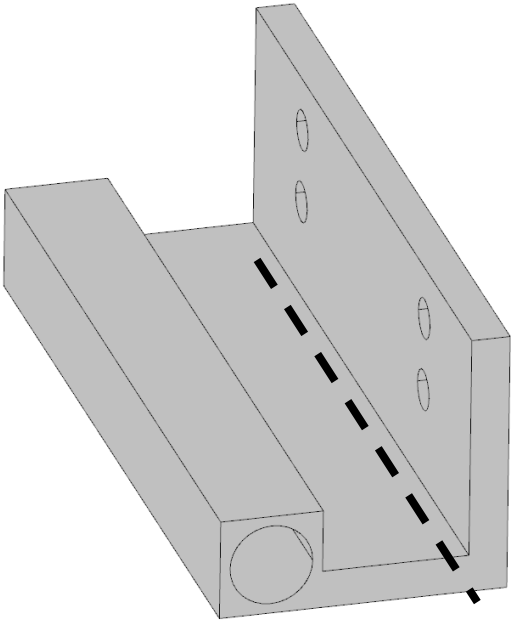
Required Parts

Quantity	Part Number	Part Description
1	12-00921-02	Bracket, Magnet

Required Tools

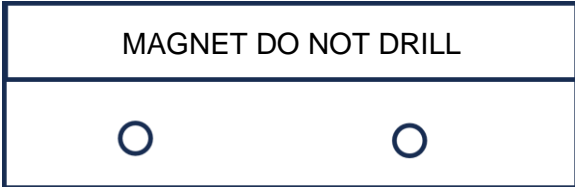
Part Number	Part Description
Customer Supplied	Saw or other metal cutting tool
Customer Supplied	Drill
Customer Supplied	Drill Bit

1



Remove the vertical leg (with holes) of the magnet.
Cut along the dashed line.
De-burr any sharp edges.

2



Mark and drill locations for mounting holes in the horizontal leg of the magnet. Center holes when possible.

Note: Hole size and location are dependent on customer mounting bracket. Location of holes must allow magnet and switch positions shown in 98-03241-00.

Do not drill the magnet!

3



Secure magnet to customer supplied mounting bracket with customer supplied hardware.

Refer to 98-03241-00 for switch installation and wiring instructions.