

CTD FUEL TANK INSTALLATION KIT PART NUMBER W/ ELECTRIC FUEL PUMP & DATA LINK SENSOR	CTD FUEL TANK INSTALLATION KIT PART NUMBER W/O ELECTRIC FUEL PUMP & DATALINK SENSOR	CTD FUEL TANK ASSY. WITH STRAPS & DATALINK PORT PART NUMBER	U.S. GAL. (NOMINAL)	A (INCHES)	B (INCHES)	C (INCHES)	D (INCHES)	DRAIN LOCATION	FILL TYPE	DRY WEIGHT INSTALLED (LBS.)	TANK MATERIAL	CONVERSION CHART					
												DECIMAL INCHES	FRACTIONAL INCHES				
98-02201-03	98-02201-06	79-01495-11	30	30.56	22.69	24.19	14.00	BOTTOM	SINGLE	93	STEEL	0.38	3/8				
		79-01495-00	50		35.62	37.12	18.00			112		0.41	13/32				
98-02201-04	98-02201-07	79-01495-12	75	27.91	51.75	53.25	26.00	END	SINGLE	183	STEEL	0.44	7/16				
		79-01495-01	100		69.38	70.88	36.00			---		0.53	17/32				
98-02201-05	98-02201-08	79-01495-02	100	27.91	67.88	69.38	36.00	END	DOUBLE	---	STEEL	1.25	1-1/4				
98-02201-04	98-02201-07	79-01495-03	100							70.88		36.00	---	1.50	1-1/2		
98-02201-05	98-02201-08	79-01495-04	100	30.56	80.81	82.31	40.00	BOTTOM	SINGLE	---	STEEL	1.56	1-9/16				
98-02201-04	98-02201-07	79-01495-05	120							83.81		40.00	---	1.62	1-5/8		
98-02201-05	98-02201-08	79-01495-06	120	27.91	80.81	82.31	40.00	END	SINGLE	---	STEEL	1.75	1-3/4				
98-02201-04	98-02201-07	79-01495-07	120							83.81		40.00	---	1.84	1-27/32		
98-02201-05	98-02201-08	79-01495-08	120	30.56	80.81	83.81	40.00	END	DOUBLE	---	STEEL	1.88	1-7/8				
98-02201-11	98-02201-10	79-01495-14	50							72		40.00	---	2.25	2-1/4		
98-02201-03	98-02201-06	79-01495-18	50	30.56	35.62	37.12	18.00	BOTTOM	SINGLE	114	STEEL	3.06	3-1/16				
98-02201-11	98-02201-10	79-01495-17	30							22.69		24.19	14.00	68	ALUMINUM		
		79-01495-16	30	35.62	37.12	18.00	67										
		79-01495-15	50				74										
		79-01495-19	50	72													
		79-01495-21	30	67													
		79-01495-20	50	74													
---	98-02201-12	79-01495-11	30	27.91	22.69	24.19	14.00	BOTTOM	SINGLE	93	STEEL	22.69	22-11/16				
		79-01495-00	50							35.62		37.12	18.00	112	24.19	24-3/16	
		---	98-02201-13	79-01495-18	50	30.56	51.75	53.25	26.00	END	SINGLE	114	STEEL	27.91	27-29/32		
				79-01495-12	75							183		30.56	30-9/16		
				---	98-02201-14	79-01495-01	100	27.91	67.88	69.38	36.00	END	DOUBLE	---	STEEL	35.62	35-5/8
						79-01495-03	100	30.56	80.81	82.31	40.00	BOTTOM	---	37.12		37-1/8	
---	98-02201-15	79-01495-05	120	27.91	80.81	82.31	40.00	END	DOUBLE	---	STEEL	51.75	51-3/4				
		79-01495-07	120	30.56	67.88	70.88	36.00	BOTTOM	---	53.25		53-1/4					
---	98-02201-16	79-01495-02	100	27.91	67.88	70.88	36.00	END	DOUBLE	---	STEEL	67.88	67-7/8				
		79-01495-04	100	30.56	80.81	83.81	40.00	BOTTOM	---	69.38		69-3/8					
---	98-02201-17	79-01495-06	120	27.91	80.81	83.81	40.00	END	DOUBLE	---	STEEL	70.88	70-7/8				
		79-01495-08	120	30.56	80.81	83.81	40.00	BOTTOM	---	80.81		80-13/16					
98-02201-18	98-02201-16	79-01495-14	50	30.56	35.62	37.12	18.00	BOTTOM	SINGLE	72	ALUMINUM	82.31	82-5/16				
		79-01495-17	30		22.69	24.19	14.00			68		83.81	83-13/16				
---	98-02201-17	79-01495-16	50	100	35.62	37.12	18.00	BOTTOM	SINGLE	74	ALUMINUM	157	---				
		79-01495-15	50							67.88				69.38	36.00	177	
98-02201-18	98-02201-16	79-01495-23	75	30.56	67.88	70.88	36.00	BOTTOM	DOUBLE	179	ALUMINUM	---	---				
---	98-02201-17	79-01495-24	100							70.88				36.00	---	---	
98-02201-18	98-02201-16	79-01495-25	100	30.56	67.88	70.88	36.00	BOTTOM	DOUBLE	---	ALUMINUM	---	---				
---	98-02201-17	79-01495-25	100							---				---			
98-02201-21	98-02201-19	79-01495-26	100	30.56	67.88	70.88	36.00	BOTTOM	DOUBLE	---	ALUMINUM	---	---				
---	98-02201-20	79-01495-26	100							---				---			
98-02201-21	98-02201-19	79-01495-27	100	30.56	67.88	70.88	36.00	BOTTOM	DOUBLE	---	ALUMINUM	---	---				
---	98-02201-20	79-01495-27	100							---				---			

DECIMAL INCHES	FRACTIONAL INCHES
0.38	3/8
0.41	13/32
0.44	7/16
0.53	17/32
0.63	5/8
1.25	1-1/4
1.50	1-1/2
1.56	1-9/16
1.62	1-5/8
1.75	1-3/4
1.84	1-27/32
1.88	1-7/8
2.25	2-1/4
3.06	3-1/16
3.62	3-5/8
3.69	3-11/16
3.75	3-3/4
3.88	3-7/8
22.69	22-11/16
24.19	24-3/16
27.44	27-7/16
27.62	27-5/8
27.91	27-29/32
30.56	30-9/16
35.62	35-5/8
37.12	37-1/8
51.75	51-3/4
53.25	53-1/4
67.88	67-7/8
69.38	69-3/8
70.88	70-7/8
80.81	80-13/16
82.31	82-5/16
83.81	83-13/16

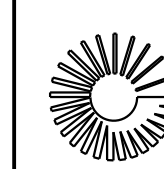
- NOTES:
- CARRIER TRANSCOLD PROVIDES CIRCLED ITEM NUMBERS AS PART OF THE INSTALLATION KIT FURNISHED WITH EACH FUEL TANK ASSY.
  - CONSULT CARRIER TRANSCOLD SERVICE ENGINEERING FOR PROPER INSTALLATION OF OPTIONAL FEATURES NOT DETERMINED AS CARRIER SUPPLIED.
  - DIMENSIONS SHOWN ARE IN INCHES WITH EQUIVALENT MILLIMETERS IN CLOSED BRACKETS ( ).
  - THE TRAILER STRUCTURE MUST BE EVALUATED BY THE TRAILER MANUFACTURER TO DETERMINE ITS ABILITY TO WITHSTAND THE IMPOSED LOADS OVER ITS SERVICE LIFE. THESE GUIDELINES DO NOT CONVEY ENDORSEMENT OR WARRANTY BY CARRIER TRANSCOLD FOR THE STRUCTURAL INTEGRITY OF THE TRAILER. FUEL TANKS INSTALLED IN ACCORDANCE WITH THESE GUIDELINES WILL PROVIDE ADEQUATE SUPPORT IN NORMAL SERVICE ENVIRONMENTS INCLUDING INTERMODAL APPLICATIONS.
    - FUEL TANK SUPPORT STRAPS MUST ATTACH TO THREE STEEL CROSS MEMBERS FOR 30 TO 120 GALLON TANK CAPACITIES.
    - FUEL TANK SUPPORT STRAPS WILL INTERFACE WITH THREE CROSS MEMBERS IF THEY ARE ON 12-INCH CENTERS. CROSS MEMBERS ON 15-INCH CENTERS WILL REQUIRE A STRUCTURAL STEEL CHANNEL TO SPAN THEM. THIS CHANNEL IS NOT SUPPLIED BY CARRIER TRANSCOLD.
    - FOR FUEL TANKS MOUNTED WITH FOUR SUPPORT STRAPS (75 GALLONS AND UP), IT IS RECOMMENDED THAT EACH PAIR OF TWO STRAPS (FOUR TOTAL) SUPPLIED BE LOCATED TOGETHER AS SHOWN TO PREVENT TANK DAMAGE.
    - INSTALL MYLAR SPACERS (ITEM 34) BETWEEN FUEL TANK HANGER BRACKETS (ITEM 50) AND BACKING PLATES (ITEM 51) AND TRAILER I-BEAMS.
    - INSTALL MYLAR WASHERS ON BOLTS (ITEM 20) AND NUTS (ITEM 12) WHERE THEY CONTACT FUEL TANK HANGER BRACKETS AND BACKING PLATES.
  - RECOMMENDED TORQUE VALUES FOR FURNISHED LOCK NUTS ARE AS FOLLOWS:
 

BOLT/THREAD	TORQUE (FT-LB)
1/4-20	9
3/8-24	30
1/2-13	60-EXCEPT AS NOTED
  - EACH INSTALLATION KIT CONTAINS SUFFICIENT CLAMPS AND GROMMETS FOR FUEL LINE ROUTING AND SECUREMENT. THE INSTALLER MAY ROUTE FUEL LINES THRU CONDUIT, 3/4 INCH (75) MINIMUM, AS AN ALTERNATE TO USING GROMMETS. (CONDUIT NOT FURNISHED AS PART OF INSTALLATION KIT).
  - EACH INSTALLATION KIT CONTAINS SUFFICIENT CLAMPS AND HARDWARE FOR SECURING THE FUEL PUMP CABLE. ROUTING OF THE CABLE MAY BE ACCOMPLISHED BY EITHER OF THE FOLLOWING METHODS:
    - THRU FREE SPACE IN SUCH A MANNER AS TO PREVENT PHYSICAL DAMAGE. (NOTE: ADDITIONAL CLAMPS MAY BE REQUIRED WITH THIS METHOD OF ROUTING.)
    - THRU CONDUIT (NOT FURNISHED AS PART OF INSTALLATION KIT).
  - USE PIPE SEALANT ON ALL PIPE CONNECTIONS (NOT FURNISHED AS PART OF INSTALLATION KIT).
  - INSTALL UNIONS (ITEMS 29 & 30) IN FUEL TANK USING PIPE SEALANT ON PIPE THREADS. WHEN INSTALLING FLEXIBLE TUBE INTO THE TANK PASS THE TUBES, BOTH SUPPLY & RETURN, THROUGH THE FITTING AND PUSH TUBES TO THE BOTTOM OF THE TANK. WHEN THE TUBES REACH THE BOTTOM OF THE TANK, PULL THEM BACK UP APPROXIMATELY 1.00 INCH, THEN TIGHTEN THE COMPRESSION NUT.

FOR SEPARATE ELECTRIC FUEL PUMP FIELD KIT ORDER NO.  
 76-00295-06

CONTINUED ON SHEET 2.

AE	REDRAWN IN PRO/E. ADDED NOTES 4.4 & 4.5.	21 MAR 13	ZMG			72N0229P13	THIRD ANGLE PROJECTION	IMPERIAL INCH FORMAT: UNLESS OTHERWISE SPECIFIED DIMENSIONS ARE IN INCHES WITH METRIC CONVERSIONS IN (MILLIMETERS)	TITLE	INSTALLATION INSTRUCTIONS 22" DIA FUEL TANKS, 30, 50, 75, 100 & 120 GALLONS	DRAWING NO.	98-02201	REV	AE
SYM	REVISION RECORD	DATE	BY	ENGR.	M.E.	NPCA NO.						SHEET 1 OF 7	AE	



**Carrier**  
A United Technologies  
Company

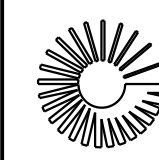
Carrier Transicold Division  
Carrier Corporation  
P.O. Box 4805  
Syracuse, New York 13221

THIS DOCUMENT AND THE INFORMATION CONTAINED THEREIN IS PROPRIETARY TO CARRIER CORPORATION AND SHALL NOT BE USED OR DISCLOSED TO OTHERS, IN WHOLE OR IN PART, WITHOUT THE WRITTEN AUTHORIZATION OF CARRIER CORPORATION.

SUBMISSION OF THESE DRAWINGS OR DOCUMENTS DOES NOT CONSTITUTE PART PERFORMANCE OR ACCEPTANCE OF CONTRACT

CTD FUEL TANK INSTALLATION KIT PART NUMBER W/ ELECTRIC FUEL PUMP & DATA LINK SENSOR	CTD FUEL TANK INSTALLATION KIT PART NUMBER W/O ELECTRIC FUEL PUMP & DATALINK SENSOR	CTD FUEL TANK ASSY. WITH STRAPS & DATALINK PORT PART NUMBER	U.S. GAL. (NOMINAL)	A (INCHES)	B (INCHES)	C (INCHES)	D (INCHES)	DRAIN LOCATION	FILL TYPE	DRY WEIGHT INSTALLED (LBS.)	TANK MATERIAL			
98-02201-18	98-02201-16	79-01495-28	120	30.56	80.81	82.31	40.00	BOTTOM	SINGLE	197	ALUMINUM			
---	98-02201-17													
98-02201-18	98-02201-16	79-01495-29												
---	98-02201-17													
98-02201-21	98-02201-19	79-01495-30												
---	98-02201-20													
98-02201-21	98-02201-19	79-01495-31												
---	98-02201-20													
98-02201-23	98-02201-22	79-01495-32	50		35.62	37.12	18.00		72					
		79-01495-35	30		22.69	24.19	14.00			68				
		79-01495-34	30		22.69	24.19	14.00			67				
		79-01495-33	50		35.62	37.12	18.00			74				
98-02201-26	98-02201-24	79-01495-36	75	30.56	51.75	53.25	26.00	BOTTOM	SINGLE	157	ALUMINUM			
---	98-02201-25													
98-02201-26	98-02201-24	79-01495-37												
---	98-02201-25													
98-02201-26	98-02201-24	79-01495-38	100		30.56	67.88	69.38		36.00	BOTTOM		SINGLE	177	ALUMINUM
---	98-02201-25													
98-02201-26	98-02201-24	79-01495-39												
---	98-02201-25													
98-02201-29	98-02201-27	79-01495-40												
---	98-02201-28													
98-02201-29	98-02201-27	79-01495-41												
---	98-02201-28													
98-02201-26	98-02201-24	79-01495-42	120	30.56		80.81	82.31	40.00	BOTTOM		SINGLE	197	ALUMINUM	
---	98-02201-25													
98-02201-26	98-02201-24	79-01495-43												
---	98-02201-25													
98-02201-29	98-02201-27	79-01495-44												
---	98-02201-28													
98-02201-29	98-02201-27	79-01495-45												
---	98-02201-28													

AE	REDRAWN IN PRO/E	21 MAR 13	ZMG			72N0229P13		IMPERIAL INCH FORMAT: UNLESS OTHERWISE SPECIFIED DIMENSIONS ARE IN INCHES WITH METRIC CONVERSIONS IN [MILLIMETERS]	TITLE INSTALLATION INSTRUCTIONS 22" DIA FUEL TANKS, 30, 50, 75, 100 & 120 GALLONS	DRAWING NO.	98-02201	REV	AE
SYM	REVISION RECORD	DATE	BY	ENGR.	M.E.	NPCA NO.							SHEET 2 OF



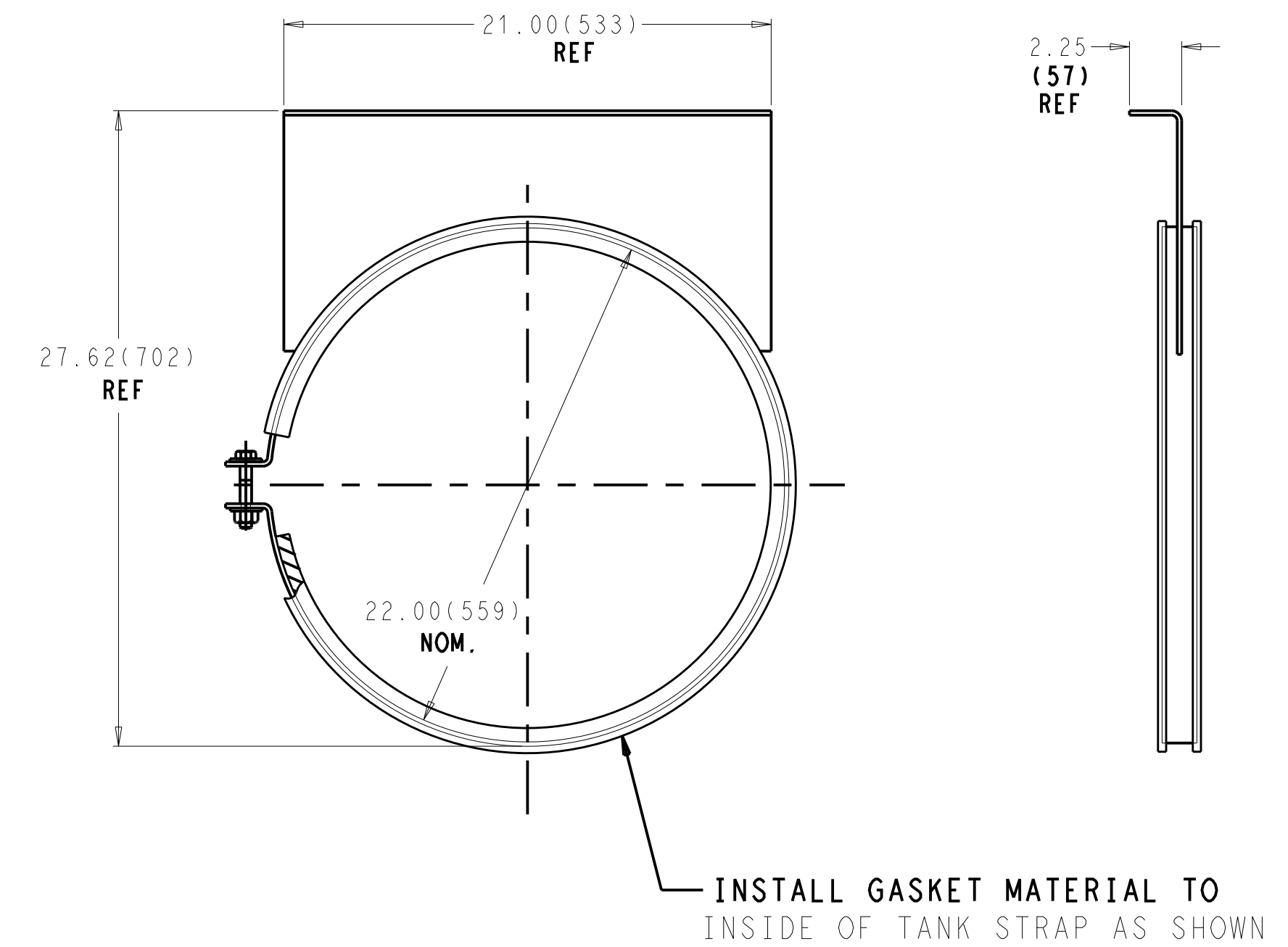
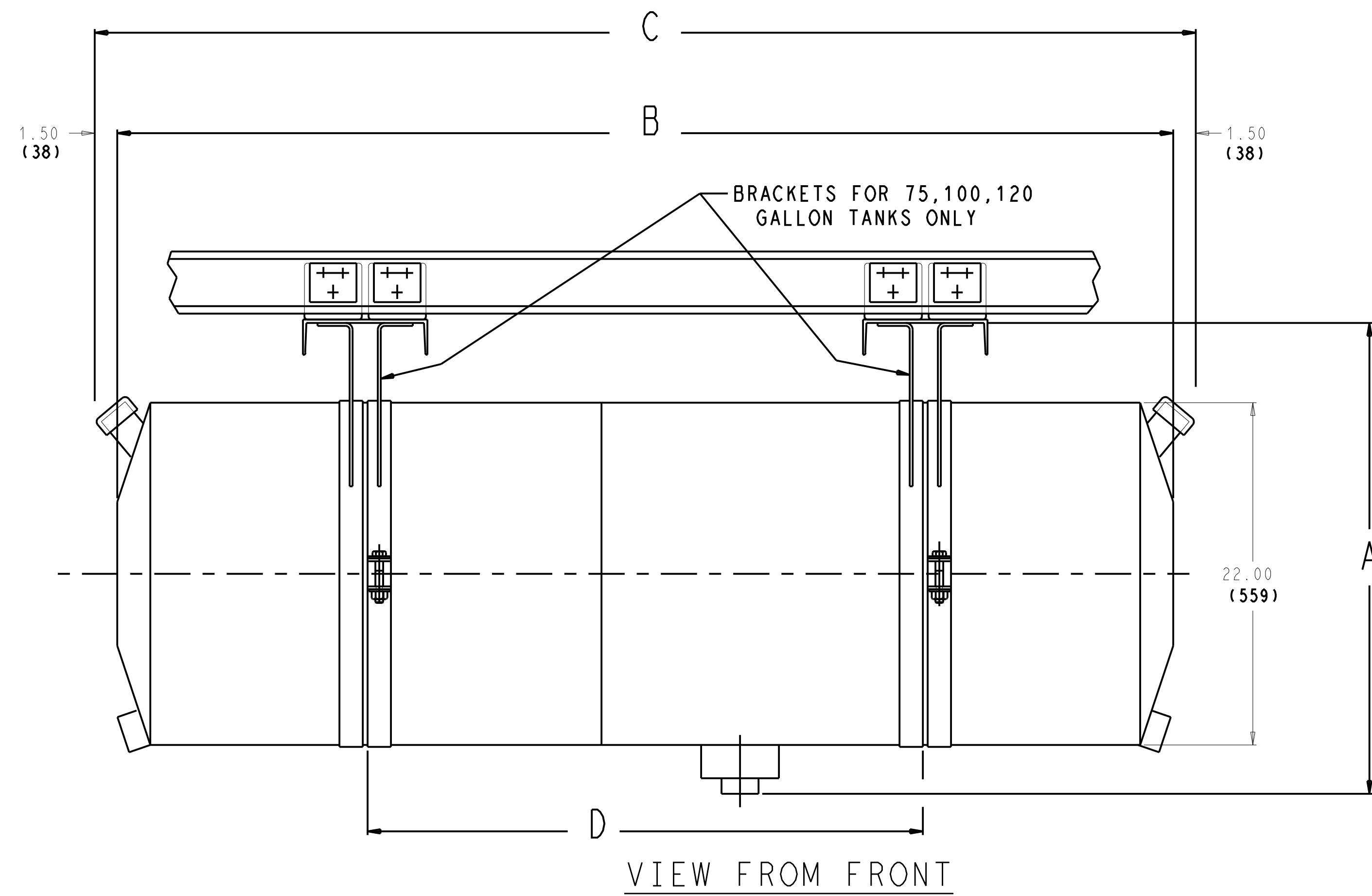
Carrier

A United Technologies Company

Carrier Transicold Division  
Carrier Corporation  
P.O. Box 4805  
Syracuse, New York 13221

THIS DOCUMENT AND THE INFORMATION CONTAINED THEREIN IS PROPRIETARY TO CARRIER CORPORATION AND SHALL NOT BE USED OR DISCLOSED TO OTHERS, IN WHOLE OR IN PART, WITHOUT THE WRITTEN AUTHORIZATION OF CARRIER CORPORATION.

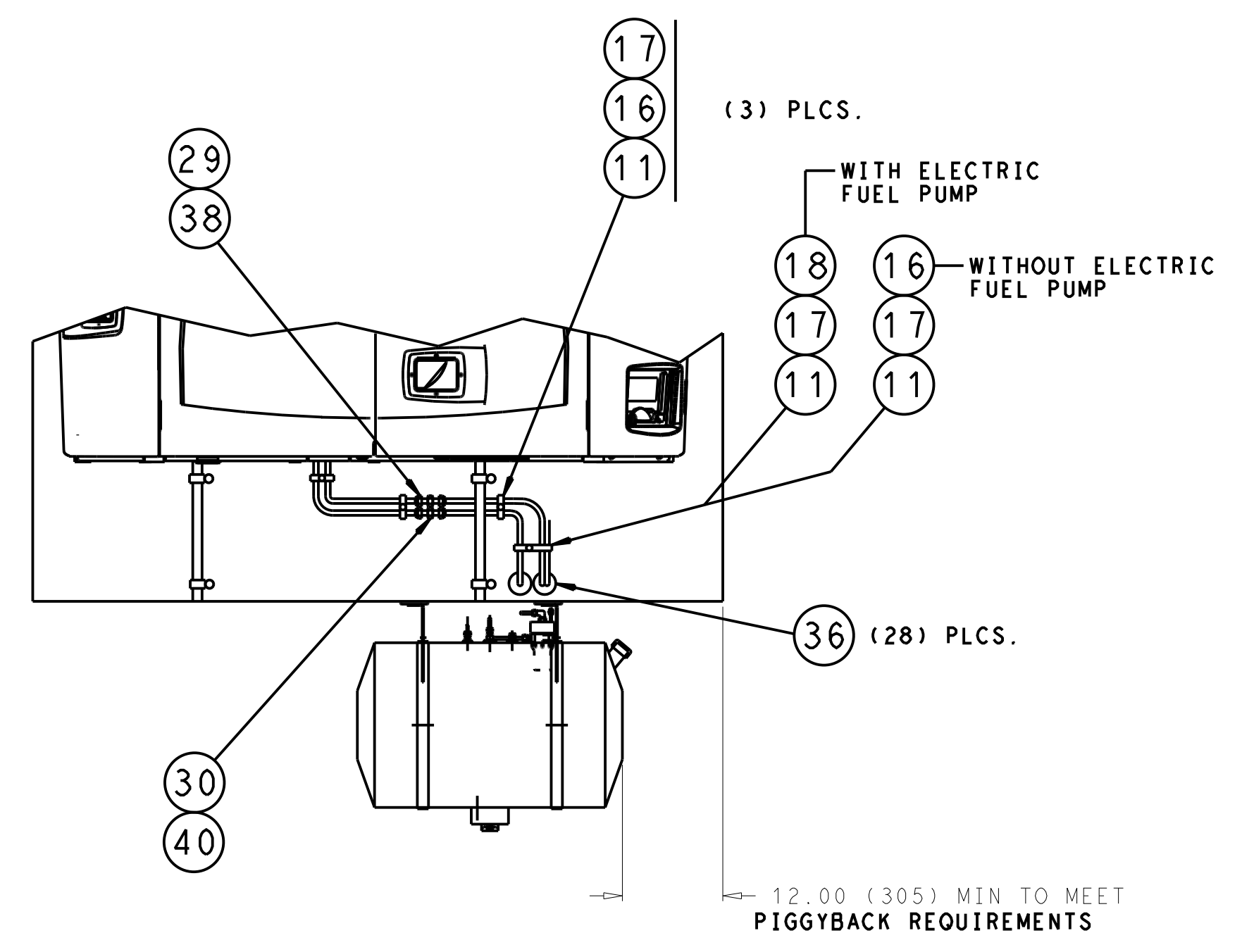
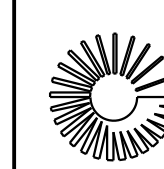
SUBMISSION OF THESE DRAWINGS OR DOCUMENTS DOES NOT CONSTITUTE PART PERFORMANCE OR ACCEPTANCE OF CONTRACT



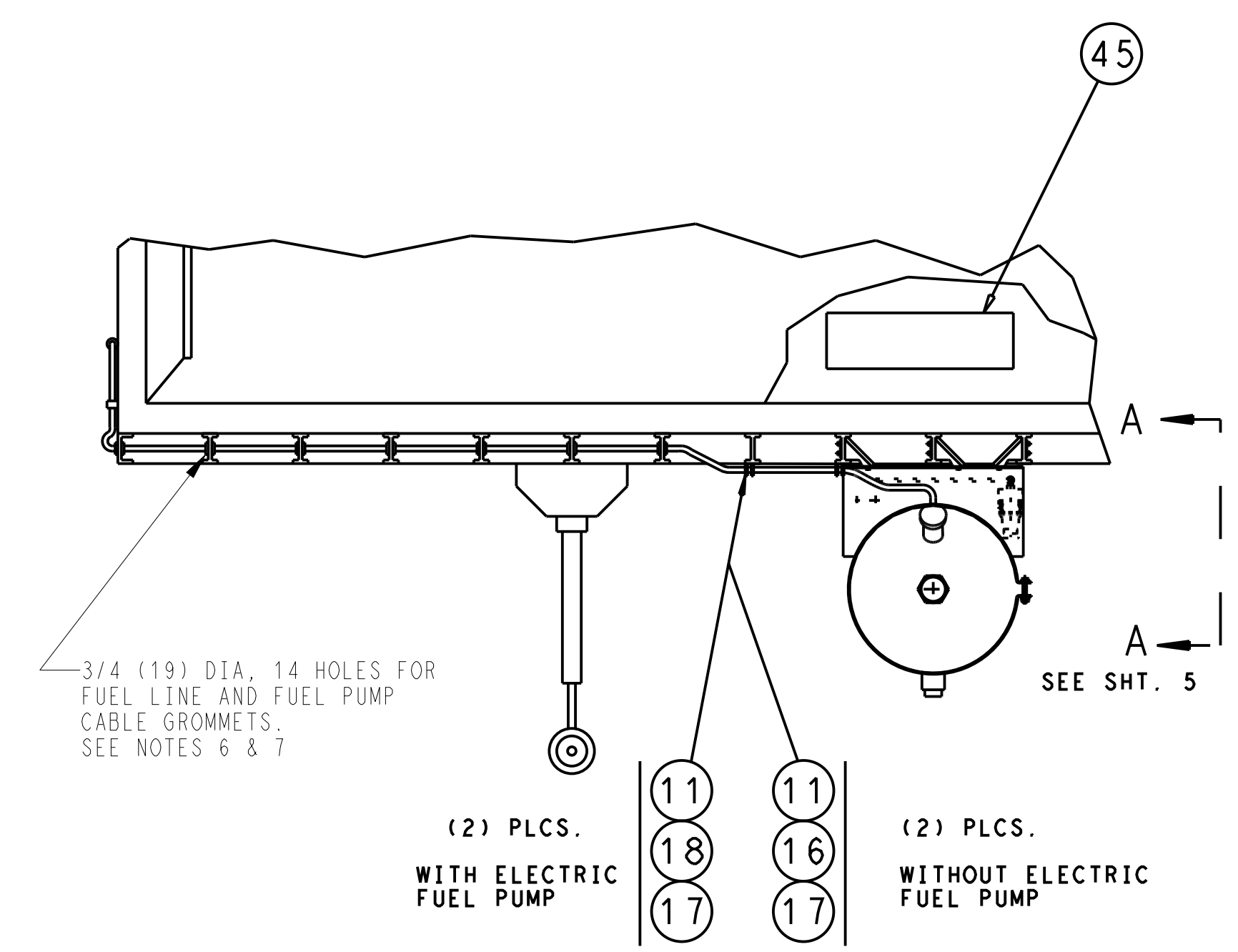
### TANK STRAP & GASKET DETAIL

NOTE: ADD GASKET SUPPLIED W/STRAP PACKAGE PRIOR TO MOUNTING STRAP TO TANK

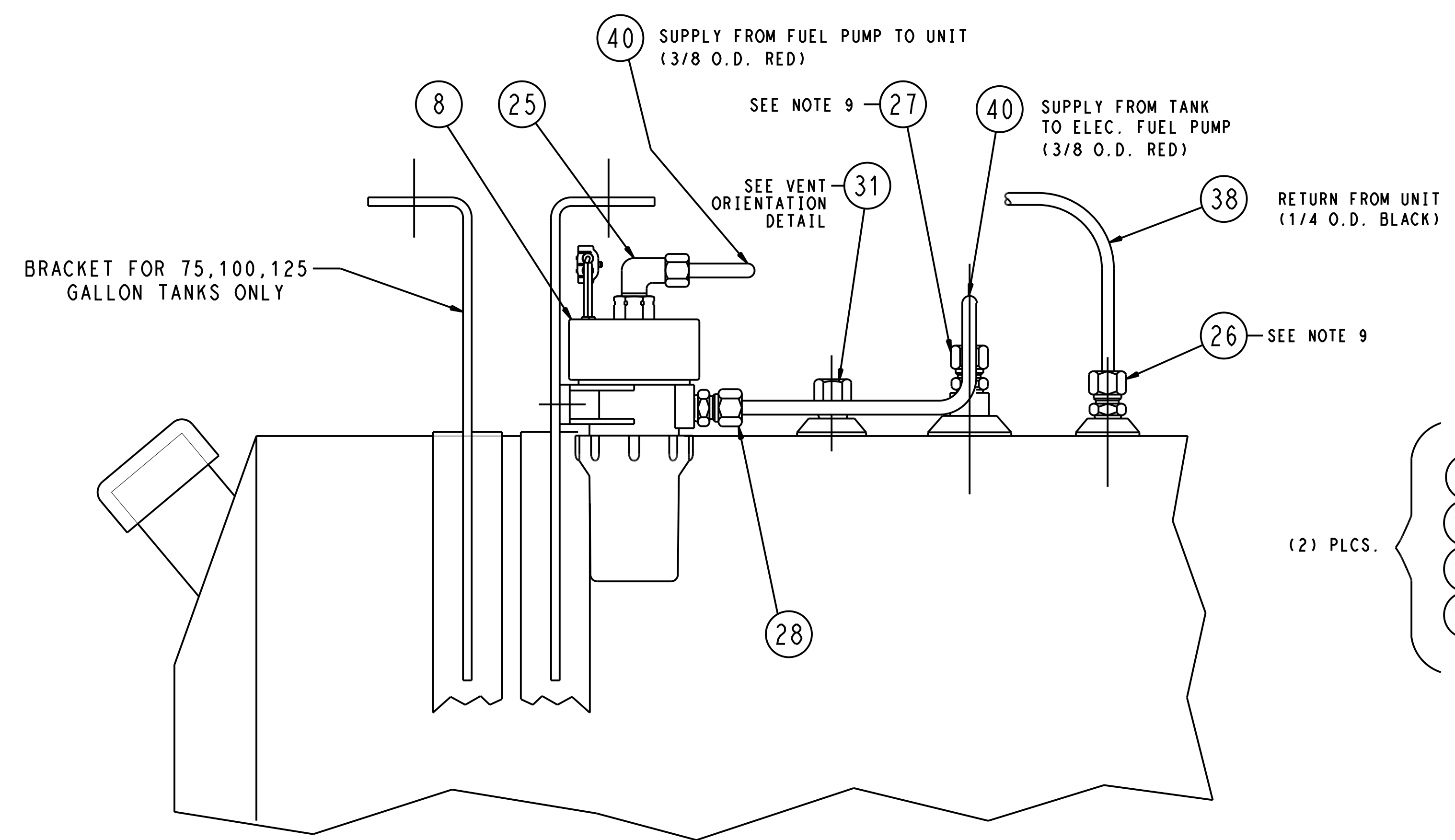
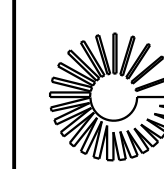
AE	REDRAWN IN PRO/E.	20 MAR 13	ZMG			72N0229P13	THIRD ANGLE PROJECTION	IMPERIAL INCH FORMAT: UNLESS OTHERWISE SPECIFIED DIMENSIONS ARE IN INCHES WITH METRIC CONVERSIONS IN [MILLIMETERS]	TITLE INSTALLATION INSTRUCTIONS 22" DIA FUEL TANKS, 30, 50, 75, 100 & 120 GALLONS	DRAWING NO. 98-02201	REV AE
SYM	REVISION RECORD	DATE	BY	ENGR.	M.E.	NPCA NO.				SHEET 3 OF	



TYPICAL TANK ARRANGEMENT

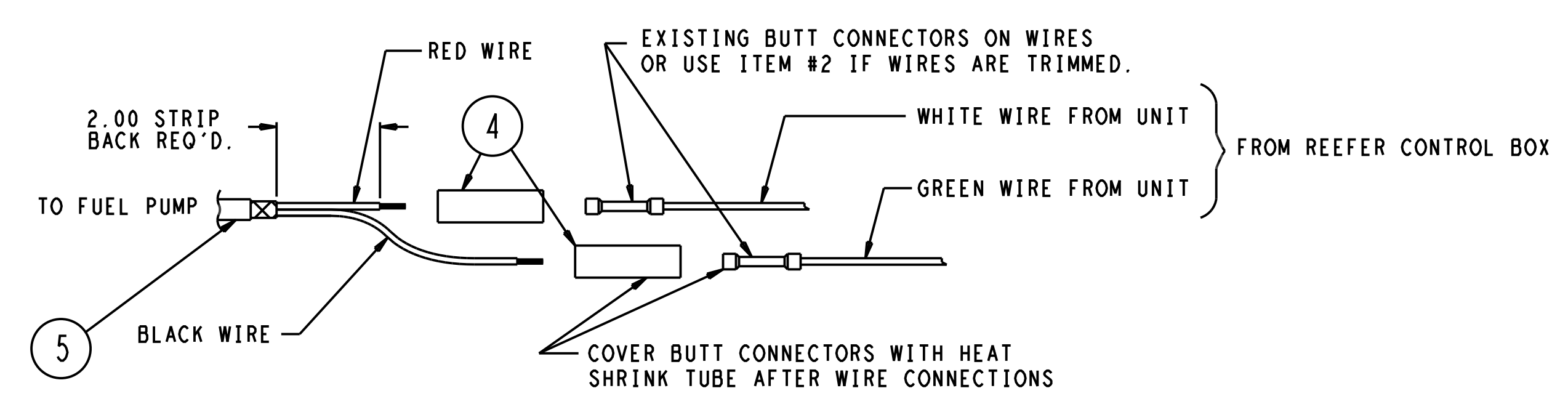
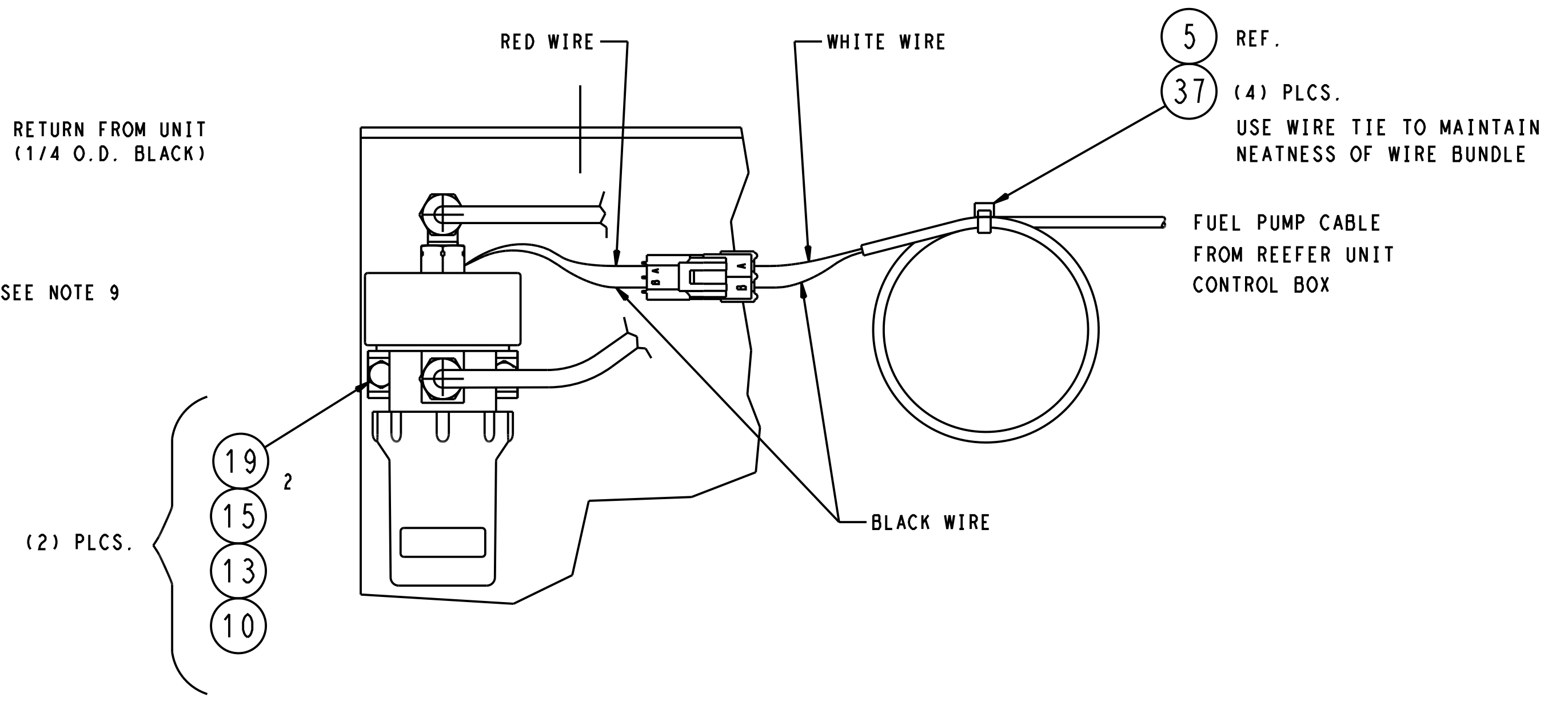


AE	REDRAWN IN PRO/E	20 MAR 13	ZMG			72N0229P13	THIRD ANGLE PROJECTION	IMPERIAL INCH FORMAT: UNLESS OTHERWISE SPECIFIED DIMENSIONS ARE IN INCHES WITH METRIC CONVERSIONS IN (MILLIMETERS)	TITLE	INSTALLATION INSTRUCTIONS 22" DIA FUEL TANKS, 30, 50, 75, 100 & 120 GALLONS	DRAWING NO.	98-02201	REV	AE
SYM	REVISION RECORD	DATE	BY	ENGR.	M.E.	NPCA NO.						SHEET 4 OF		

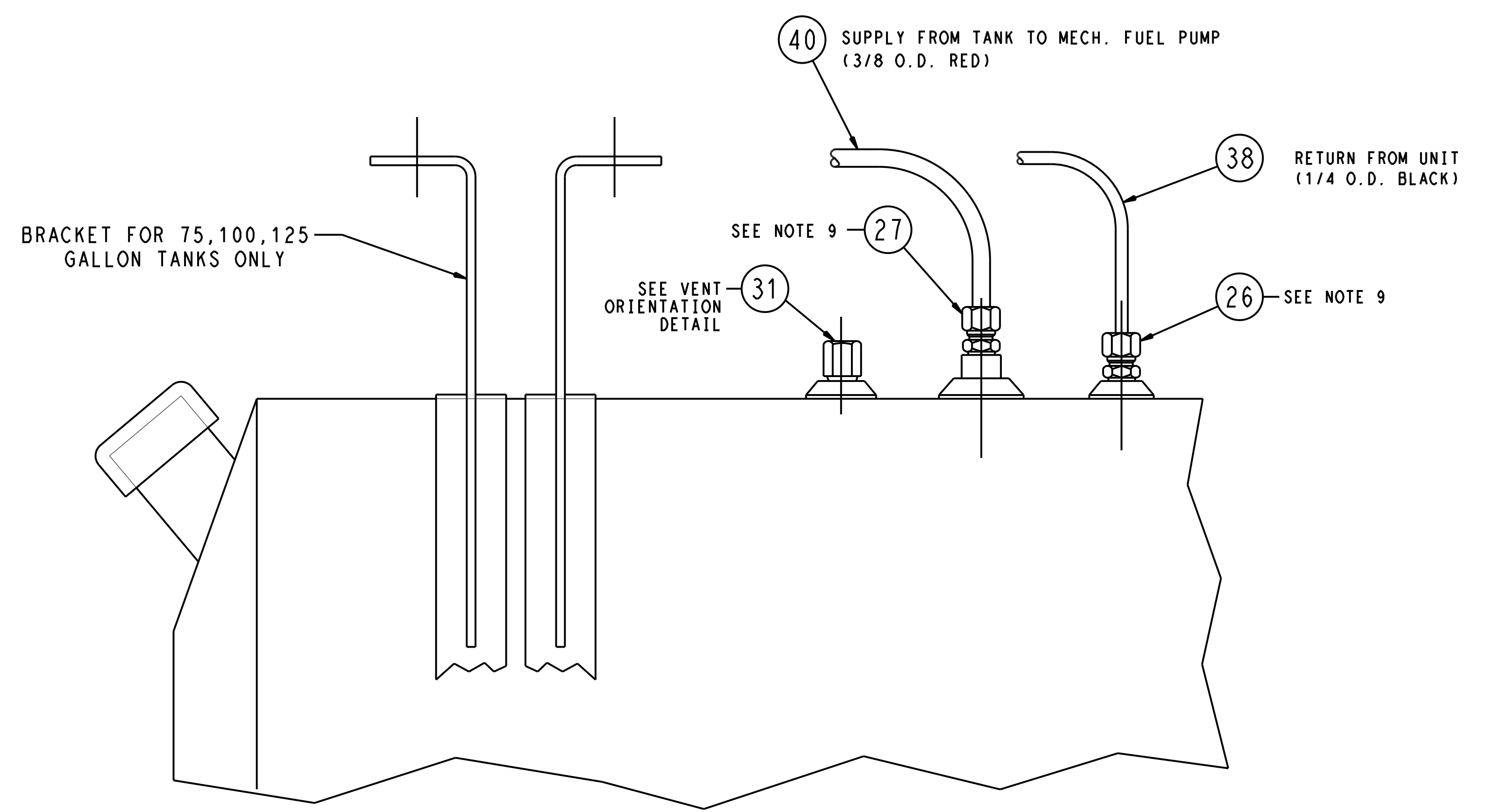


VIEW A - A (SHT 4)

FOR KITS WITH ELECTRIC FUEL PUMP



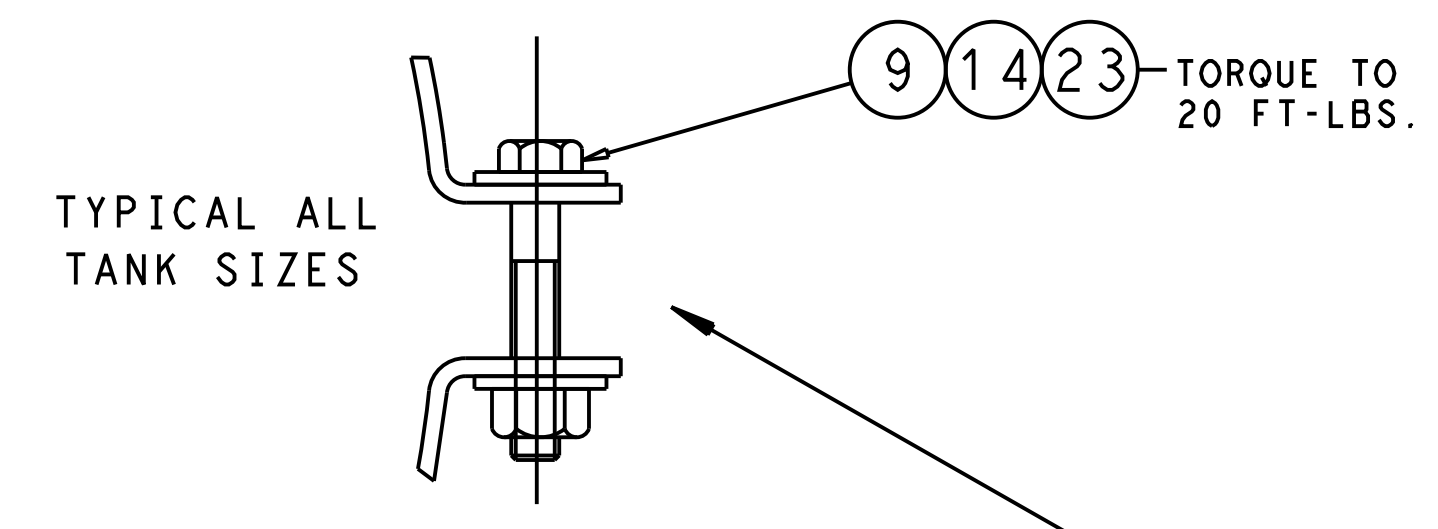
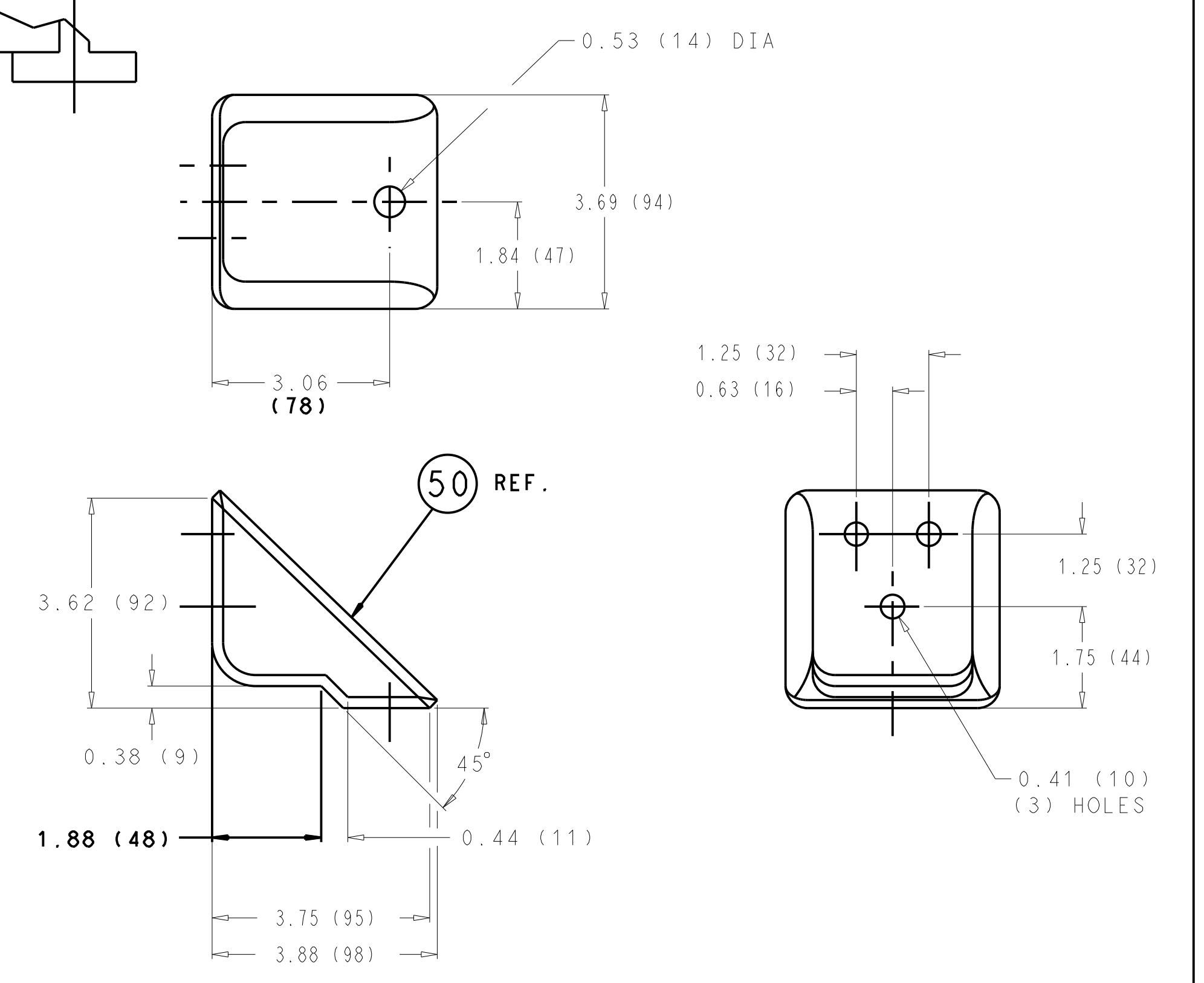
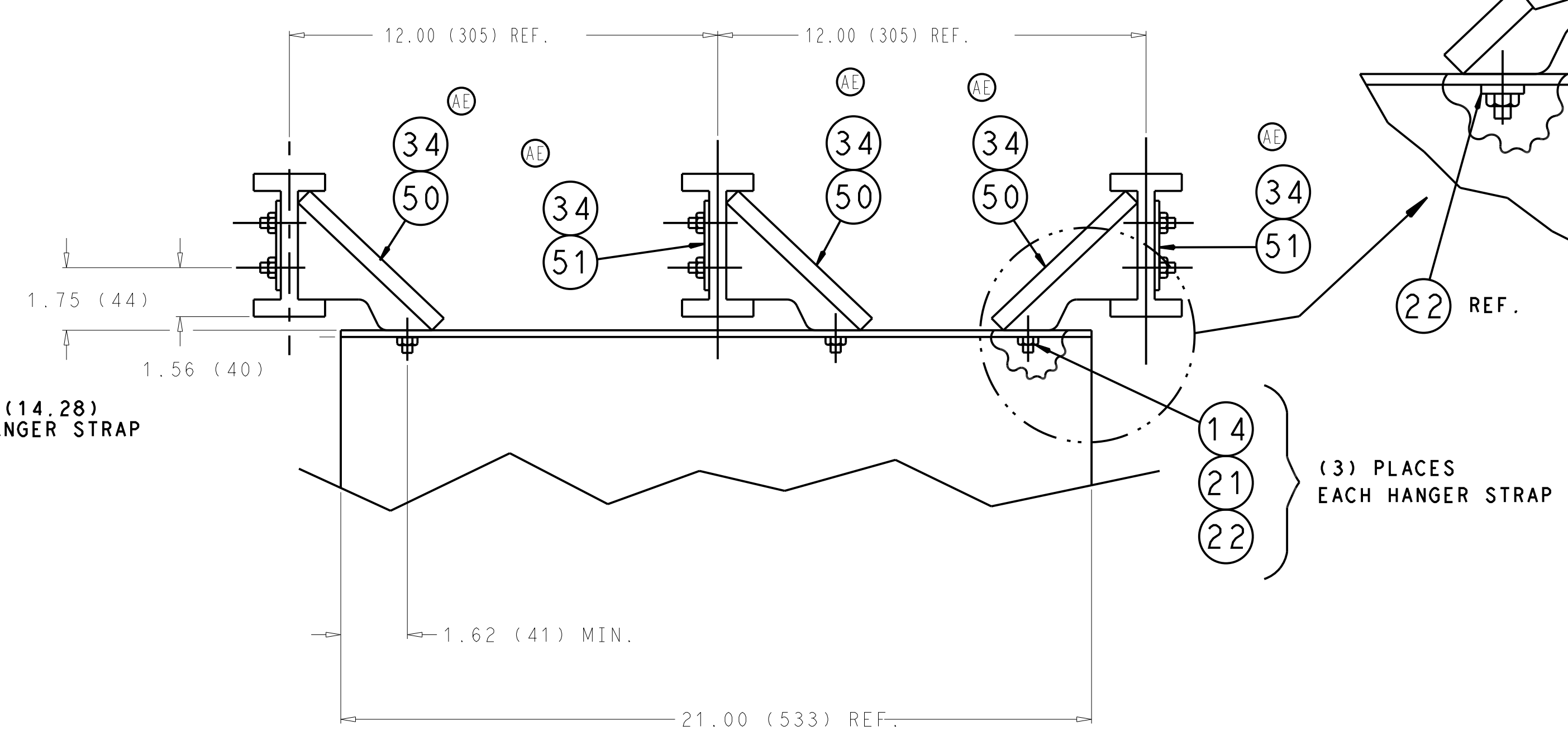
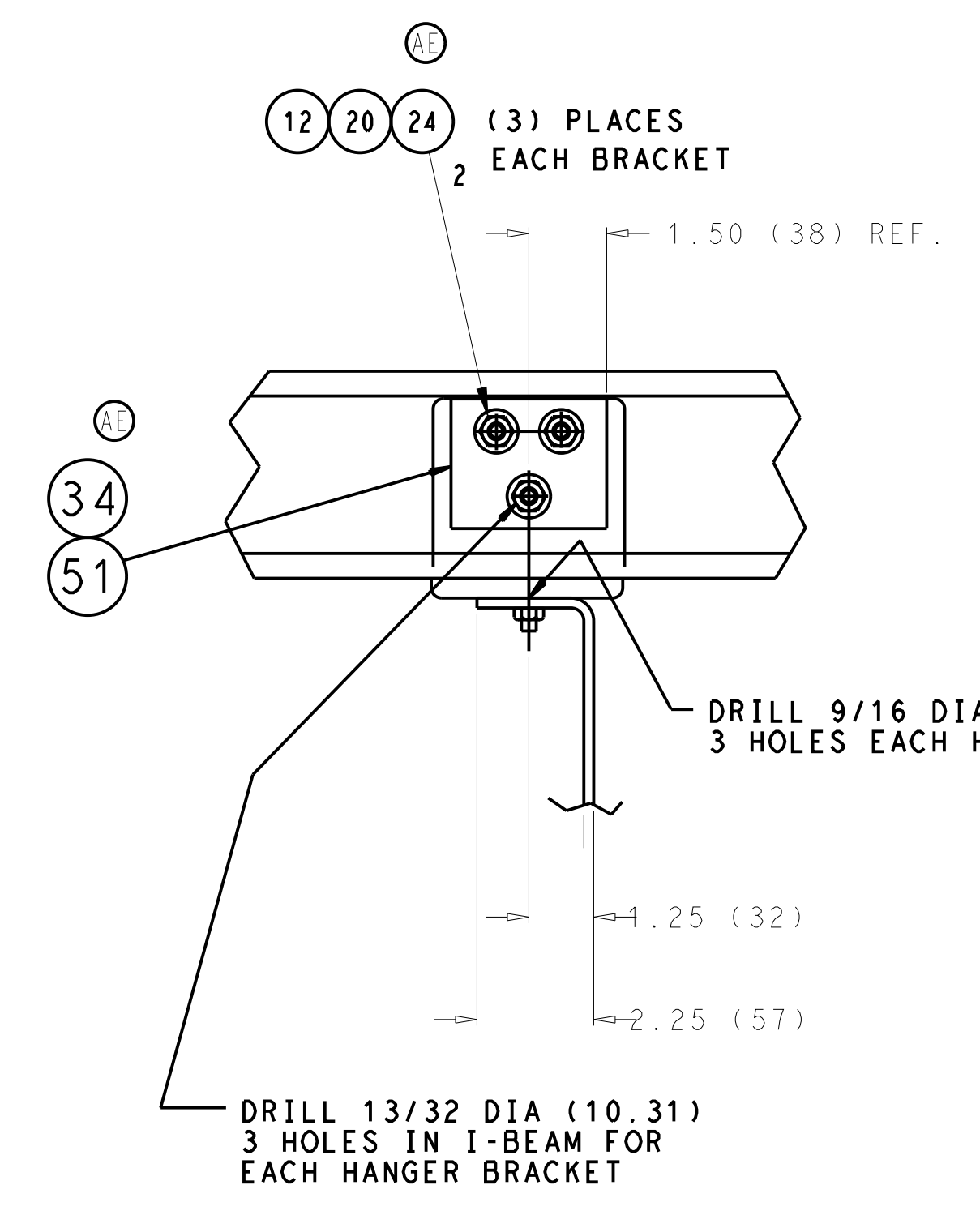
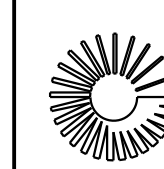
ELECTRIC FUEL PUMP CABLE CONNECTIONS  
AT REEFER UNIT CONTROL BOX



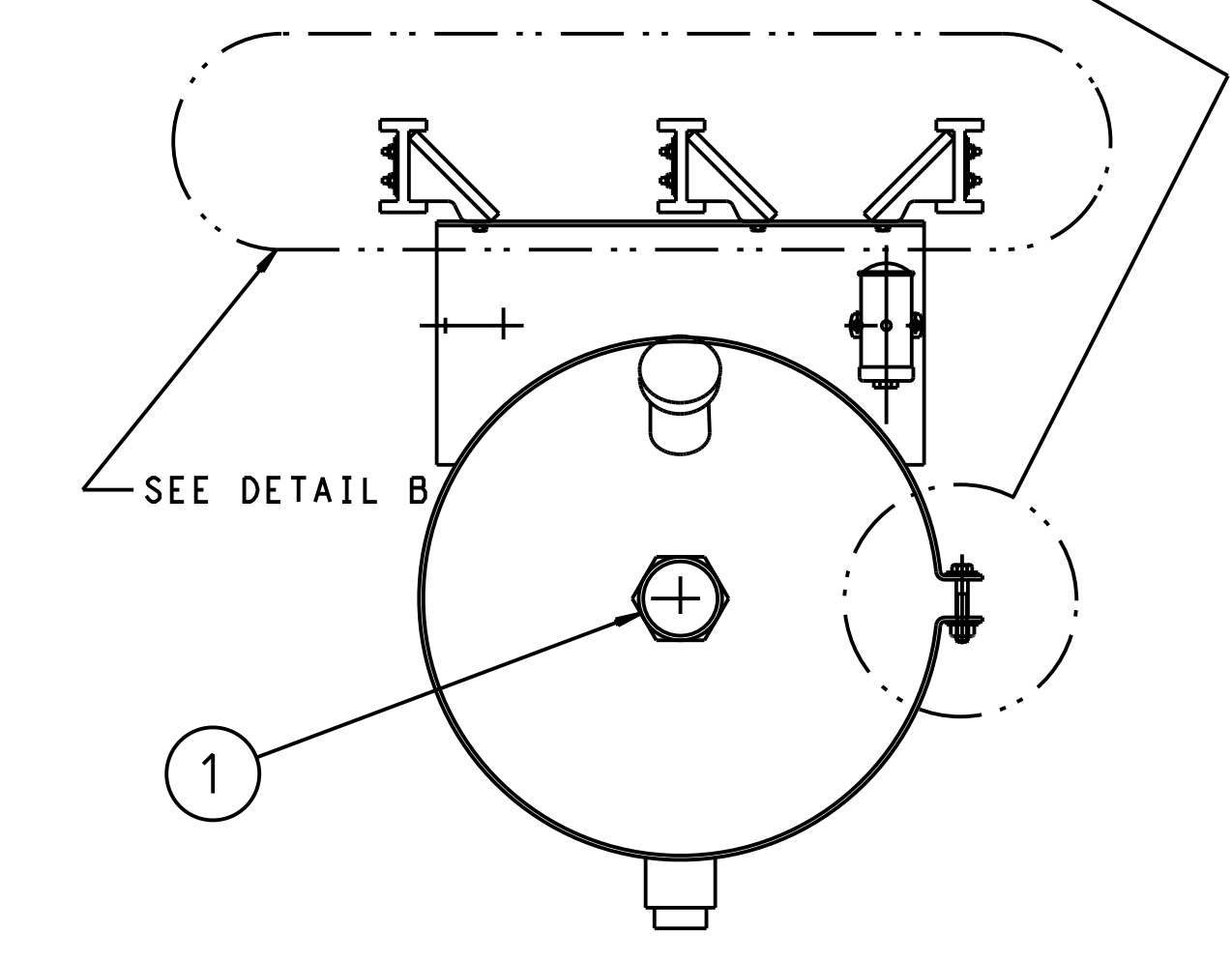
VIEW A - A (SHT 4)

FOR KITS WITHOUT ELECTRIC FUEL PUMP

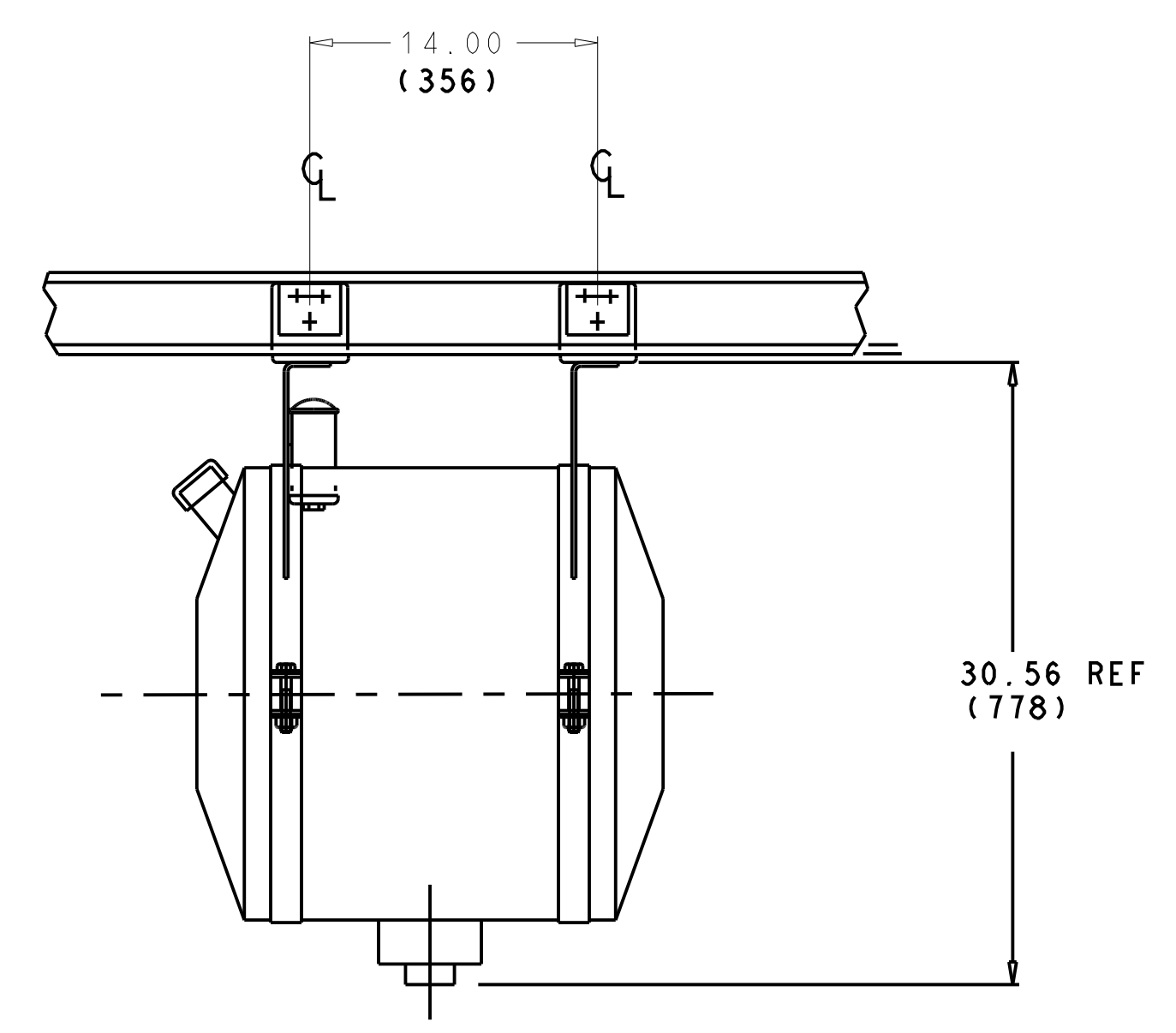
AE	REDRAWN IN PRO/E.	20 MAR 13	ZMG		72N0229P13	THIRD ANGLE PROJECTION	IMPERIAL INCH FORMAT: UNLESS OTHERWISE SPECIFIED DIMENSIONS ARE IN INCHES WITH METRIC CONVERSIONS IN (MILLIMETERS)	TITLE	INSTALLATION INSTRUCTIONS 22" DIA FUEL TANKS, 30, 50, 75, 100 & 120 GALLONS	DRAWING NO.	98-02201	REV	AE
SYM	REVISION RECORD	DATE	BY	ENGR.	M.E.	NPCA NO.					SHEET 5 OF		



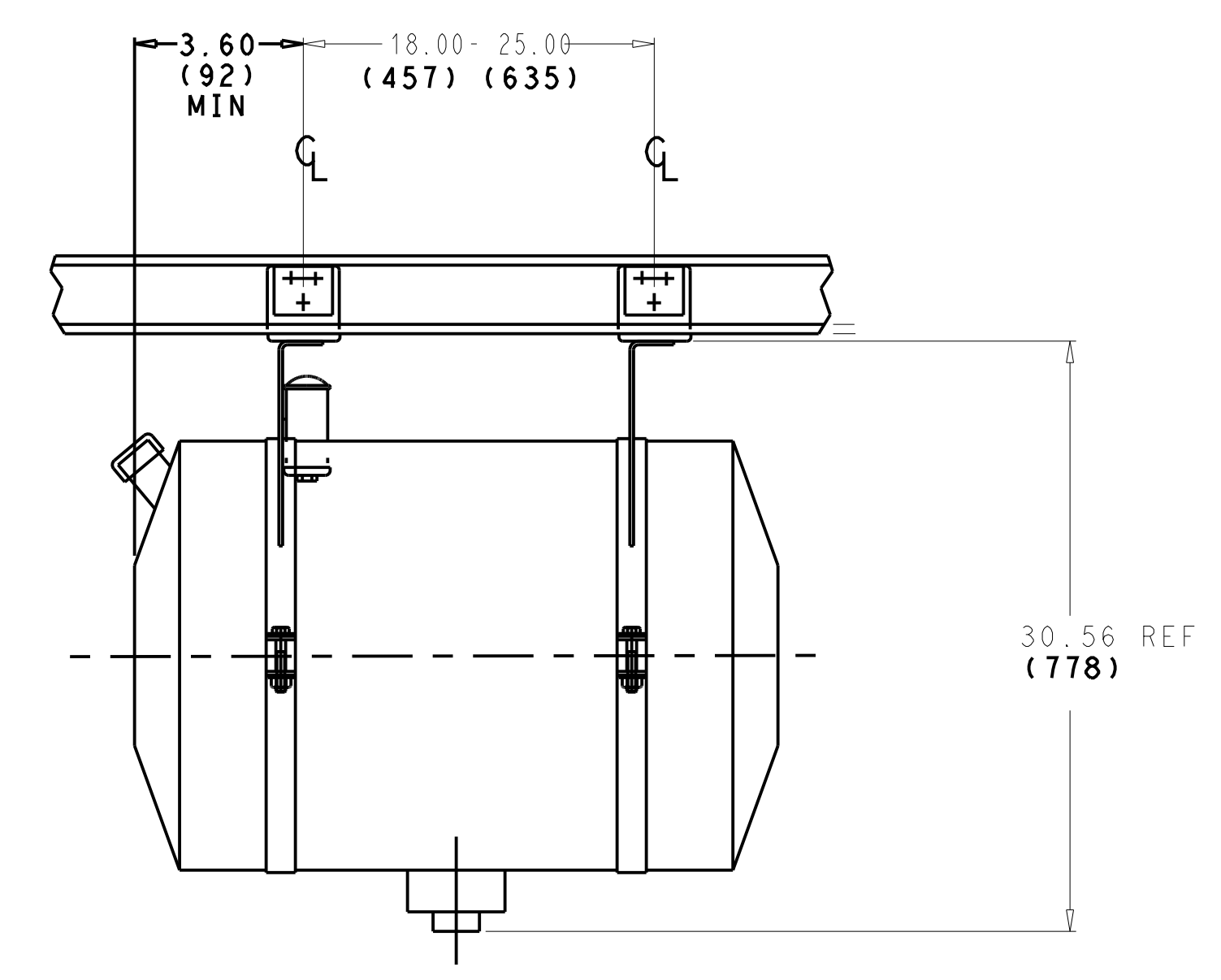
DETAIL B



TYPICAL

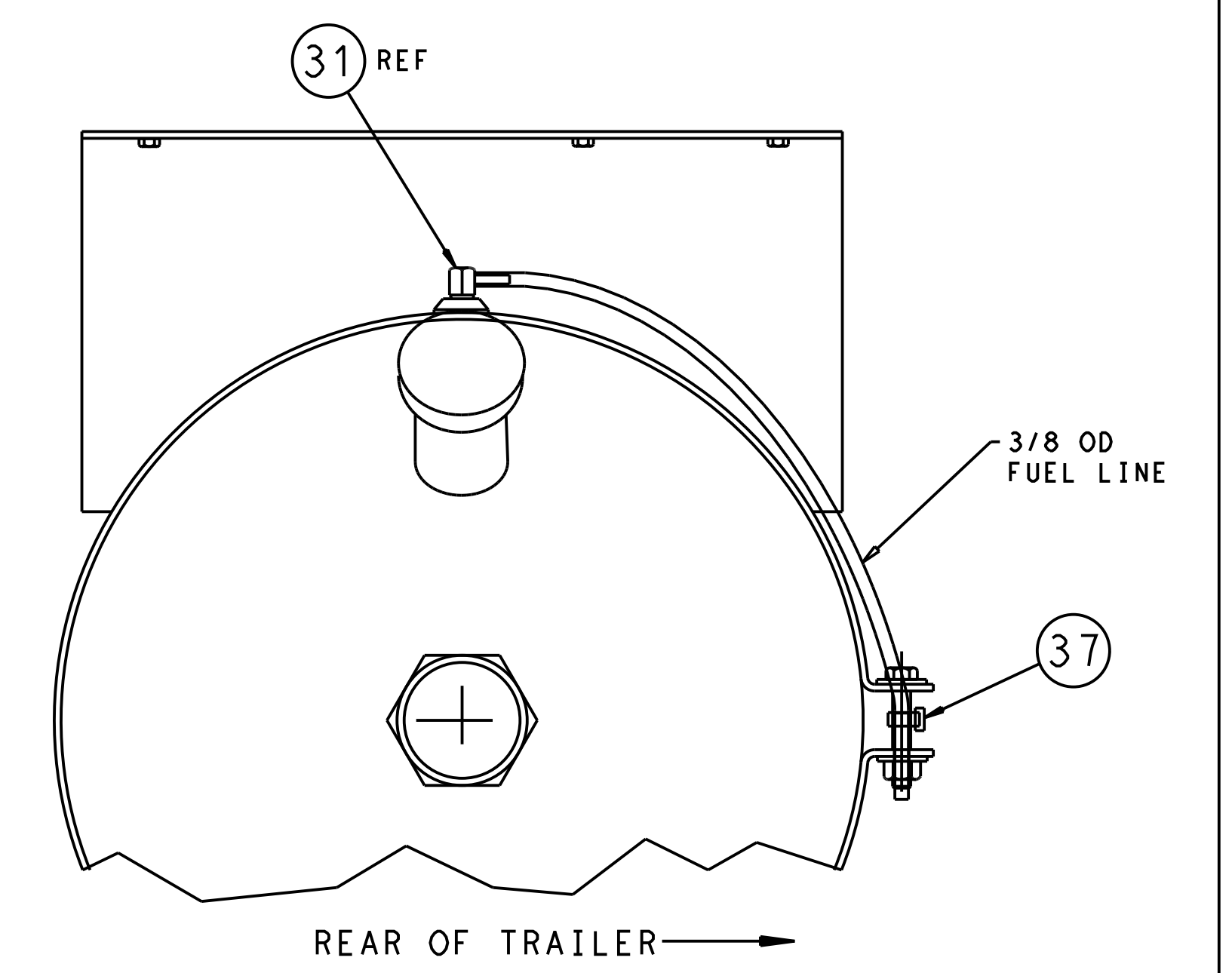


30 GALLON TANK



50 GALLON TANK

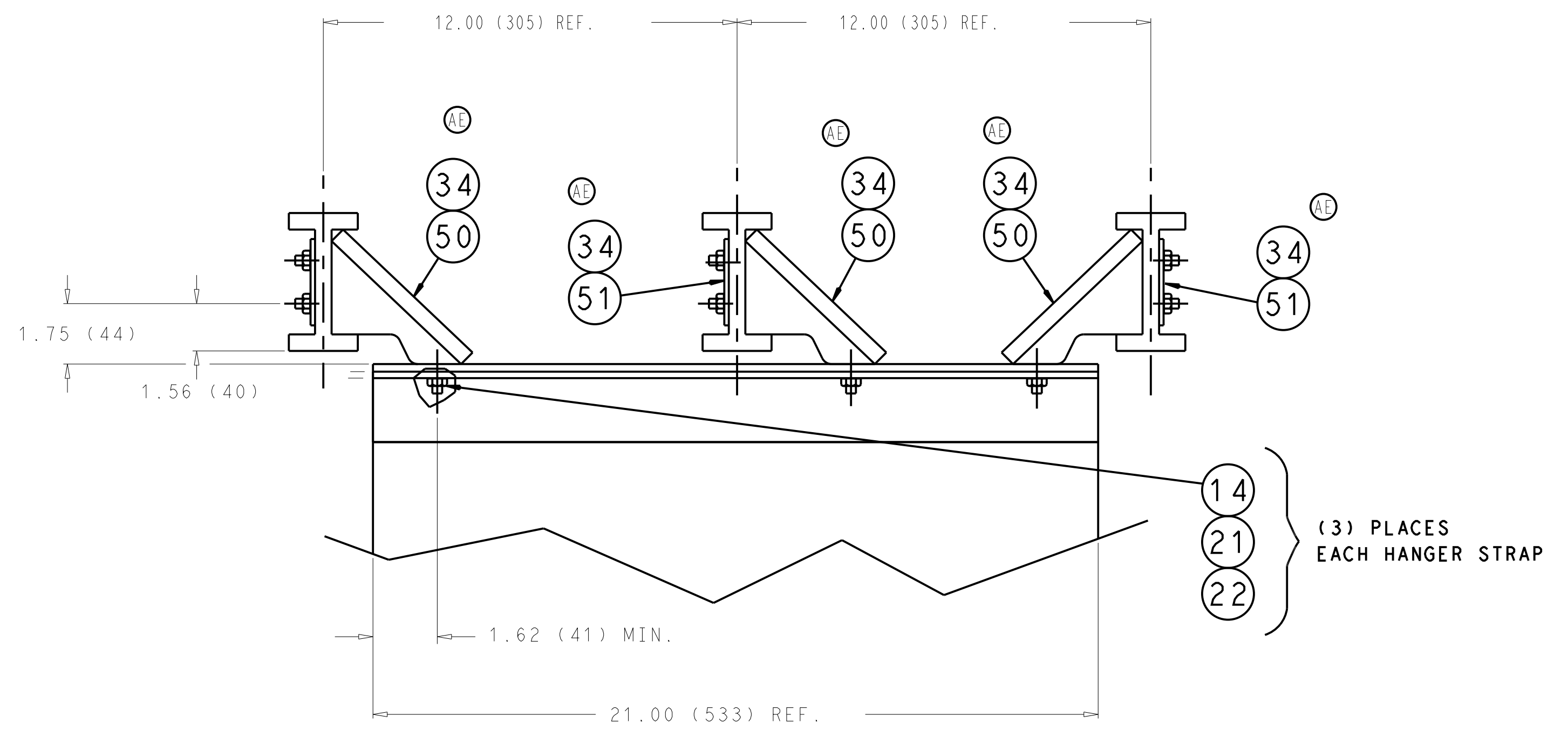
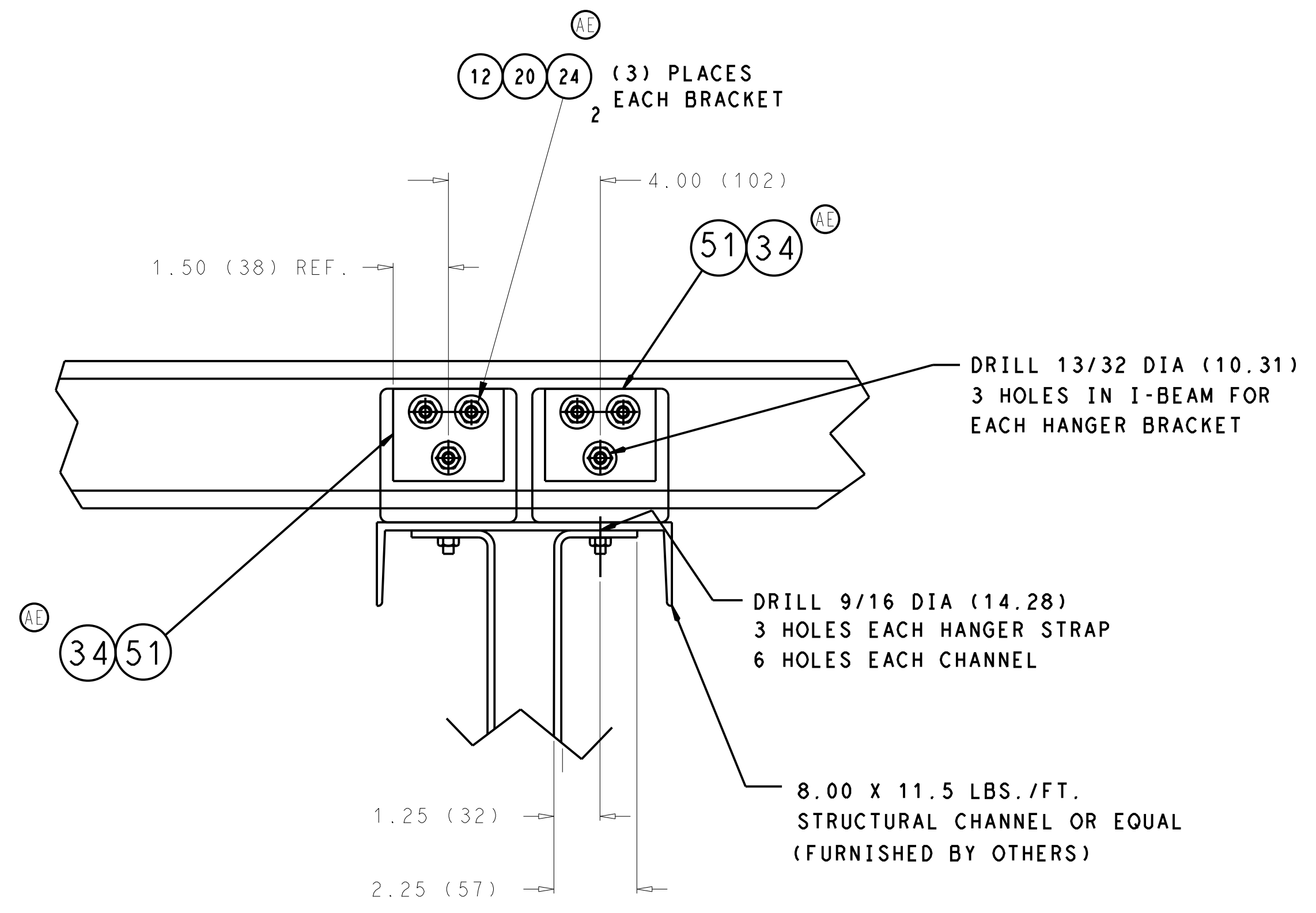
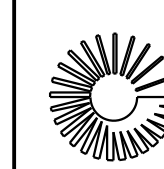
HANGER BRACKET DETAIL



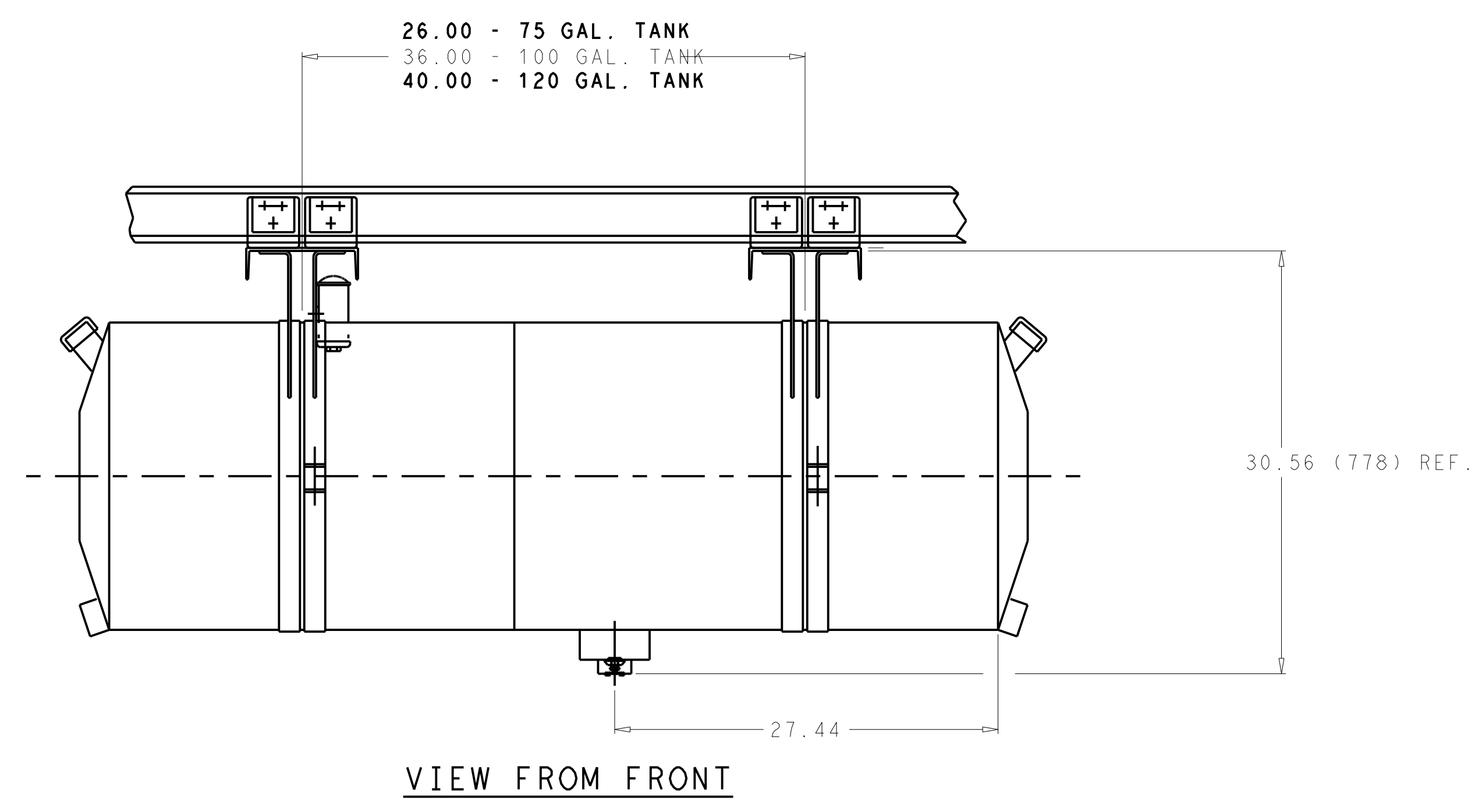
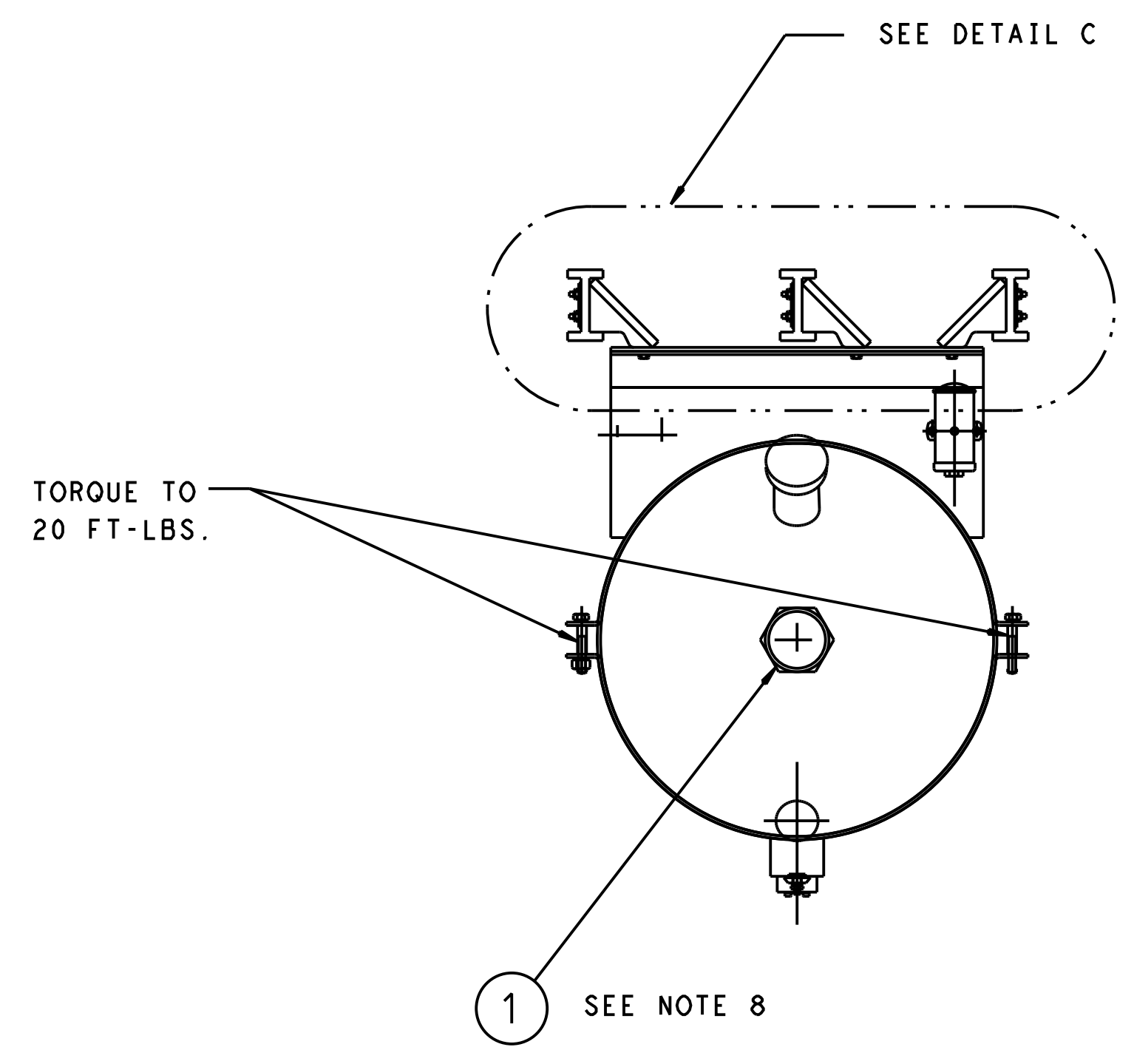
VENT ORIENTATION DETAIL

ORIENTATE FUEL TANK VENT BARBED FITTING TO FACE TOWARDS REAR TRAILER DOOR.  
CUT 18.00 INCHES OF 3/8 FUEL LINE AND INSTALL ONTO VENT THEN ROUTE TO TANK STRAP BOLT AND SECURE TO BOLT WITH WIRE TIE.

AE	REDRAWN IN PRO/E. ADDED CALLOUTS IT.34 (6 PLCS) AND IT.24.	20 MAR 13	ZMG		72N0229P13	THIRD ANGLE PROJECTION	IMPERIAL INCH FORMAT: UNLESS OTHERWISE SPECIFIED DIMENSIONS ARE IN INCHES WITH METRIC CONVERSIONS IN [MILLIMETERS]	TITLE INSTALLATION INSTRUCTIONS 22" DIA FUEL TANKS, 30, 50, 75, 100 & 120 GALLONS	DRAWING NO. 98-02201 SHEET 6 OF	REV
SYM	REVISION RECORD	DATE	BY	ENGR.	M.E.	NPCA NO.				AE



DETAIL C



75, 100 & 120 GALLON TANKS, SINGLE & DOUBLE FILL

AE	REDRAWN IN PRO/E. ADDED CALLOUTS IT.34 (7 PLCS) AND IT.24.	20 MAR 13	ZMG			72N0229P13	THIRD ANGLE PROJECTION	IMPERIAL INCH FORMAT: UNLESS OTHERWISE SPECIFIED DIMENSIONS ARE IN INCHES WITH METRIC CONVERSIONS IN [MILLIMETERS]	TITLE	INSTALLATION INSTRUCTIONS 22" DIA FUEL TANKS, 30, 50, 75, 100 & 120 GALLONS	DRAWING NO.	98-02201	REV	AE
SYM	REVISION RECORD	DATE	BY	ENGR.	M.E.	NPCA NO.						SHEET 7 OF		