



Carrier Transcold Division
Carrier Corporation
P. O. Box 4805
Syracuse, New York 13221

THIS DOCUMENT AND THE INFORMATION CONTAINED THEREIN IS PROPRIETARY TO CARRIER CORPORATION AND SHALL NOT BE USED OR DISCLOSED TO OTHERS, IN WHOLE OR IN PART, WITHOUT THE WRITTEN AUTHORIZATION OF CARRIER CORPORATION.

SUBMISSION OF THESE DRAWINGS OR DOCUMENTS DOES NOT CONSTITUTE PART PERFORMANCE OR ACCEPTANCE OF CONTRACT

CTD FUEL TANK INSTALLATION KIT PART NUMBER W/ ELECTRIC FUEL PUMP & DATA LINK SENSOR	CTD FUEL TANK INSTALLATION KIT PART NUMBER W/O ELECTRIC FUEL PUMP & DATALINK SENSOR	CTD FUEL TANK ASSY. WITH STRAPS & DATALINK PORT PART NUMBER	U.S. GAL. (NOMINAL)	A (INCHES)	B (INCHES)	C (INCHES)	D (INCHES)	DRAIN LOCATION	FILL TYPE	DRY WEIGHT INSTALLED (LBS.)	TANK MATERIAL
98-02634-11	98-02634-10	79-04096-14	50	30.56	35.62	37.12	22.50	BOTTOM	SINGLE	72	ALUMINUM
		79-04096-16	30		22.69	24.19	12.50			67	
--	98-02634-15	79-04096-14	50		35.62	37.12	22.50			72	
		79-04096-16	30		22.69	24.19	12.50			67	
98-02634-23	98-02634-22	79-04096-32	50		35.62	37.12	22.50			72	
		79-04096-34	30		22.69	24.19	12.50			67	

CONVERSION CHART

DECIMAL INCHES	FRACTIONAL INCHES
0.38	3/8
0.41	13/32
0.44	7/16
0.53	17/32
0.63	5/8
1.25	1-1/4
1.50	1-1/2
1.56	1-9/16
1.62	1-5/8
1.75	1-3/4
1.84	1-27/32
1.88	1-7/8
2.25	2-1/4
3.06	3-1/16
3.62	3-5/8
3.69	3-11/16
3.75	3-3/4
3.88	3-7/8
22.69	22-11/16
24.19	24-3/16
27.44	27-7/16
27.62	27-5/8
27.91	27-29/32
30.56	30-9/16
35.62	35-5/8
37.12	37-1/8
51.75	51-3/4
53.25	53-1/4
67.88	67-7/8
69.38	69-3/8
70.88	70-7/8
80.81	80-13/16
82.31	82-5/16
83.81	83-13/16

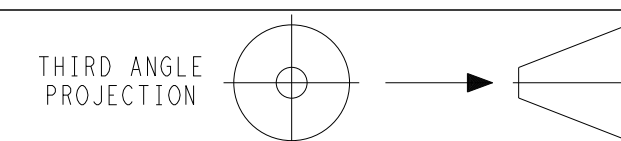
NOTES:

- CARRIER TRANSCOLD PROVIDES CIRCLED ITEM NUMBERS AS PART OF THE INSTALLATION KIT FURNISHED WITH EACH FUEL TANK ASSY.
- CONSULT CARRIER TRANSCOLD SERVICE ENGINEERING FOR PROPER INSTALLATION OF OPTIONAL FEATURES NOT DETERMINED AS CARRIER SUPPLIED.
- DIMENSIONS SHOWN ARE IN INCHES WITH EQUIVALENT MILLIMETERS IN CLOSED BRACKETS ().
- THE TRAILER STRUCTURE MUST BE EVALUATED BY THE TRAILER MANUFACTURER TO DETERMINE ITS ABILITY TO WITHSTAND THE IMPOSED LOADS OVER ITS SERVICE LIFE. THESE GUIDELINES DO NOT CONVEY ENDORSEMENT OR WARRANTY BY CARRIER TRANSCOLD FOR THE STRUCTURAL INTEGRITY OF THE TRAILER. FUEL TANKS INSTALLED IN ACCORDANCE WITH THESE GUIDELINES WILL PROVIDE ADEQUATE SUPPORT IN NORMAL SERVICE ENVIRONMENTS INCLUDING INTERMODAL APPLICATIONS.
 - FUEL TANK SUPPORT STRAPS MUST ATTACH TO THREE STEEL CROSS MEMBERS FOR 30 TO 50 GALLON TANK CAPACITIES.
 - FUEL TANK SUPPORT STRAPS WILL INTERFACE WITH THREE CROSS MEMBERS IF THEY ARE ON 12-INCH CENTERS. CROSS MEMBERS ON 15-INCH CENTERS WILL REQUIRE A STRUCTURAL STEEL CHANNEL TO SPAN THEM. THIS CHANNEL IS NOT SUPPLIED BY CARRIER TRANSCOLD.
 - INSTALL MYLAR SPACERS (ITEM 34) BETWEEN FUEL TANK HANGER BRACKETS (ITEM 50) AND BACKING PLATES (ITEM 51) AND TRAILER I-BEAMS.
 - INSTALL MYLAR WASHERS ON BOLTS (ITEM 20) AND NUTS (ITEM 12) WHERE THEY CONTACT FUEL TANK HANGER BRACKETS AND BACKING PLATES.
- RECOMMENDED TORQUE VALUES FOR FURNISHED LOCK NUTS ARE AS FOLLOWS:

BOLT/THREAD	TORQUE (FT-LB)
1/4-20	9
3/8-24	30
1/2-13	60-EXCEPT AS NOTED
- EACH INSTALLATION KIT CONTAINS SUFFICIENT CLAMPS AND GROMMETS FOR FUEL LINE ROUTING AND SECUREMENT. THE INSTALLER MAY ROUTE FUEL LINES THRU CONDUIT, 3/4 INCH (75) MINIMUM, AS AN ALTERNATE TO USING GROMMETS. (CONDUIT NOT FURNISHED AS PART OF INSTALLATION KIT)
 - DO NOT ROUTE THE FUEL PUMP CABLES WITH EITHER FUEL LINE. THE FUEL PUMP CABLE MUST BE ROUTED SEPARATE FROM THE FUEL LINES.
- EACH INSTALLATION KIT CONTAINS SUFFICIENT CLAMPS AND HARDWARE FOR SECURING THE FUEL PUMP CABLE. ROUTING OF THE CABLE MAY BE ACCOMPLISHED BY EITHER OF THE FOLLOWING METHODS:
 - THRU FREE SPACE IN SUCH A MANNER AS TO PREVENT PHYSICAL DAMAGE. (NOTE: ADDITIONAL CLAMPS MAY BE REQUIRED WITH THIS METHOD OF ROUTING.)
 - THRU CONDUIT (NOT FURNISHED AS PART OF INSTALLATION KIT).
 - DO NOT ROUTE THE FUEL LINES SIDE-BY-SIDE. THEY MUST BE SEPARATED FROM EACH OTHER.
- USE PIPE SEALANT ON ALL PIPE CONNECTIONS (NOT FURNISHED AS PART OF INSTALLATION KIT).
- INSTALL CONNECTOR (ITEM 26) IN FUEL TANK USING PIPE SEALANT ON PIPE THREADS. WHEN INSTALLING FLEXIBLE TUBE INTO THE TANK PASS THE TUBES, BOTH SUPPLY & RETURN, THROUGH THE FITTING AND PUSH TUBES TO THE BOTTOM OF THE TANK. WHEN THE TUBES REACH THE BOTTOM OF THE TANK, PULL THEM BACK UP APPROXIMATELY 1.00 INCH. THEN TIGHTEN THE COMPRESSION NUT.

FOR SEPARATE ELECTRIC FUEL PUMP FIELD KIT ORDER NO.
76-00884-00
FOR SEPARATE FUEL HOSE AND FITTINGS FIELD KIT ORDER NO.
76-00883-00

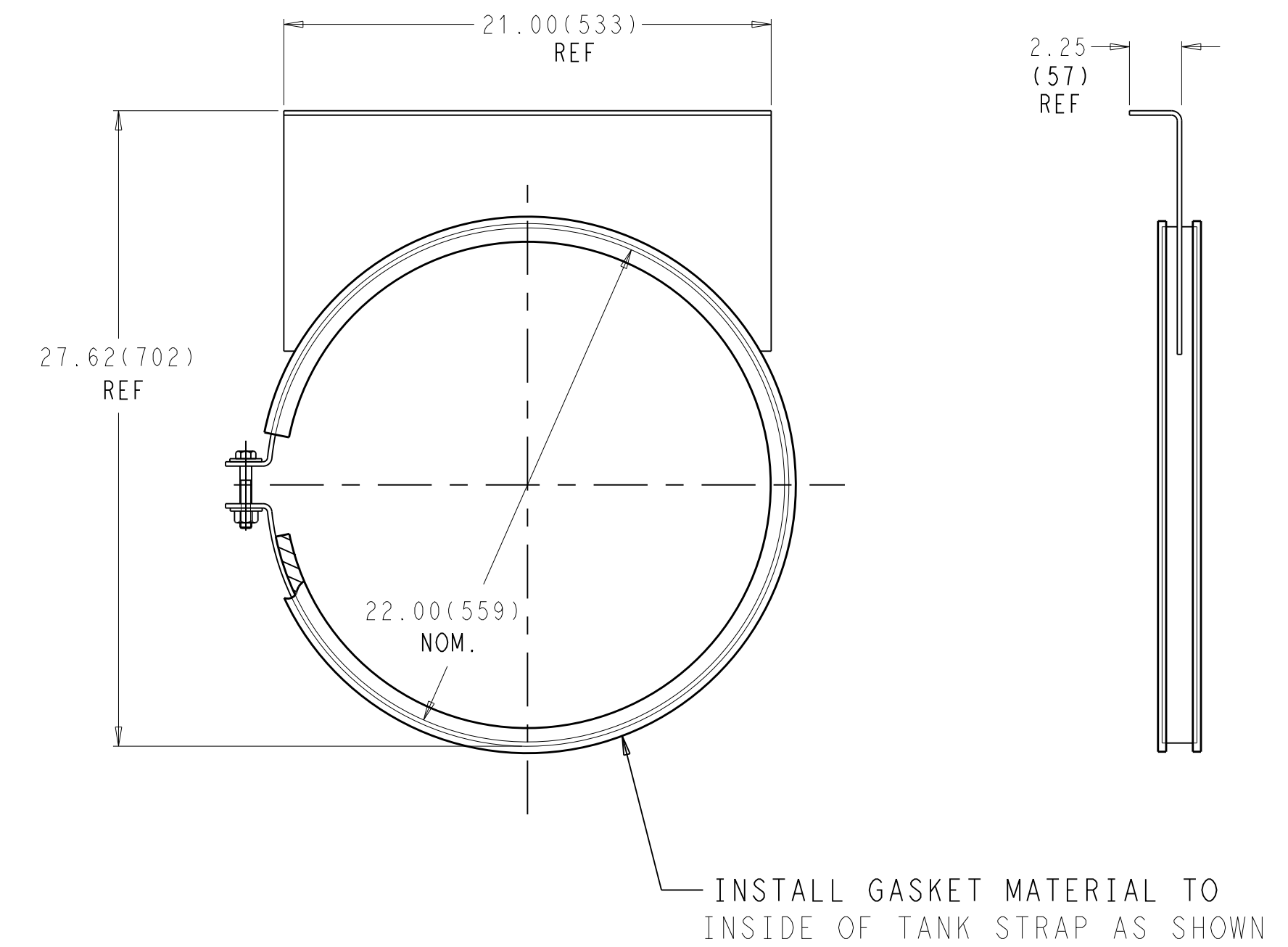
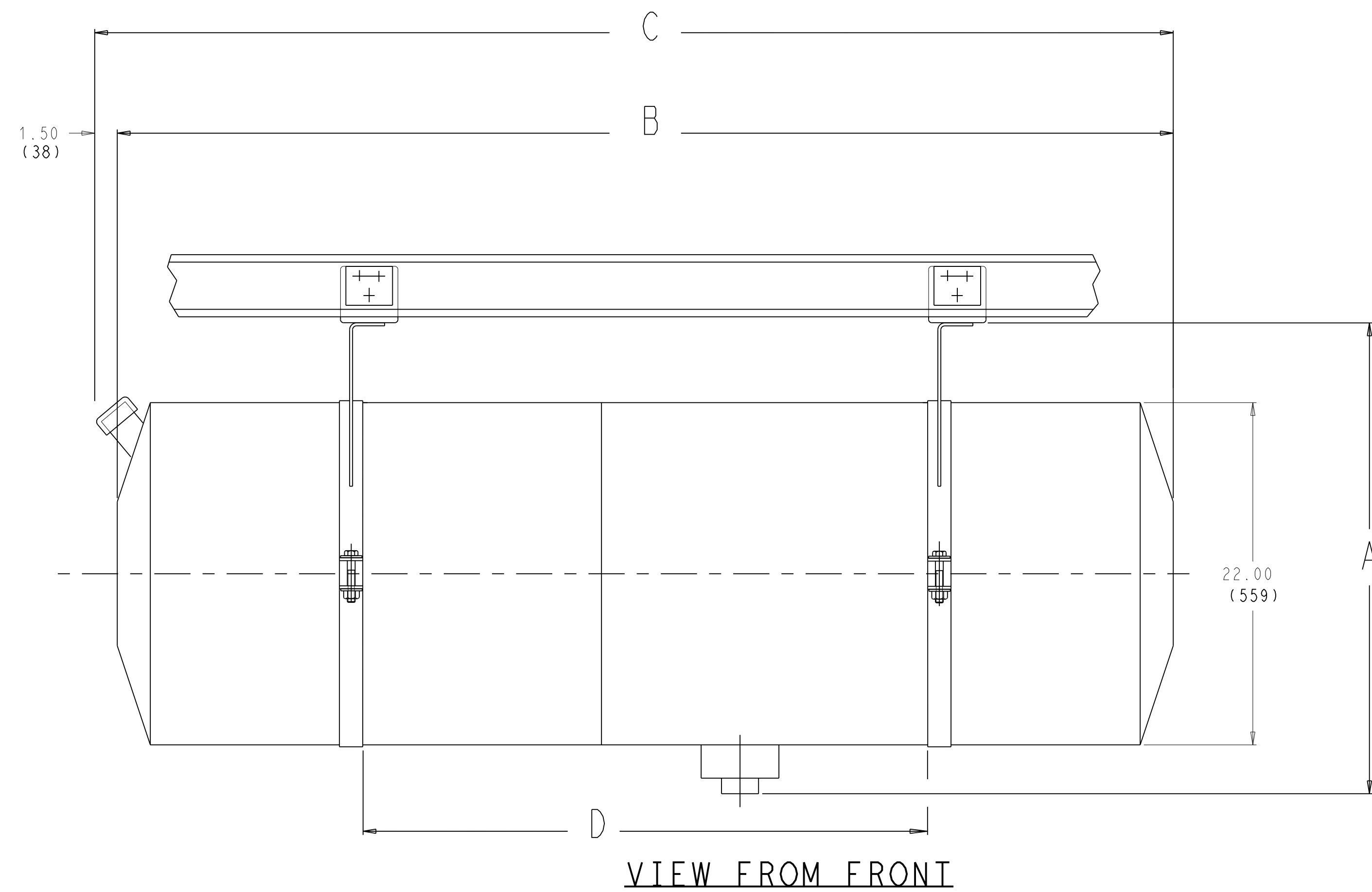
B	IN NOTE 7 REMOVED METHOD "3/8 FUEL LINE THRU GROMMETS"; ADDED NOTES 6.1 & 7.1; UPDATED SHT INDEX; SEE SHT 3	06OCT2015	KFV			72N0032P15
A	INITIAL PRODUCTION RELEASE	AUG-7-14	BGC			72N0073P14
SYM	REVISION RECORD	DATE	BY	ENGR.	M.E.	NPCA NO.



IMPERIAL INCH FORMAT:
UNLESS OTHERWISE SPECIFIED
DIMENSIONS ARE IN INCHES WITH
METRIC CONVERSIONS IN (MILLIMETERS)

TITLE
INSTALLATION INSTRUCTIONS
22" DIA FUEL TANKS, 30 & 50 GALLONS

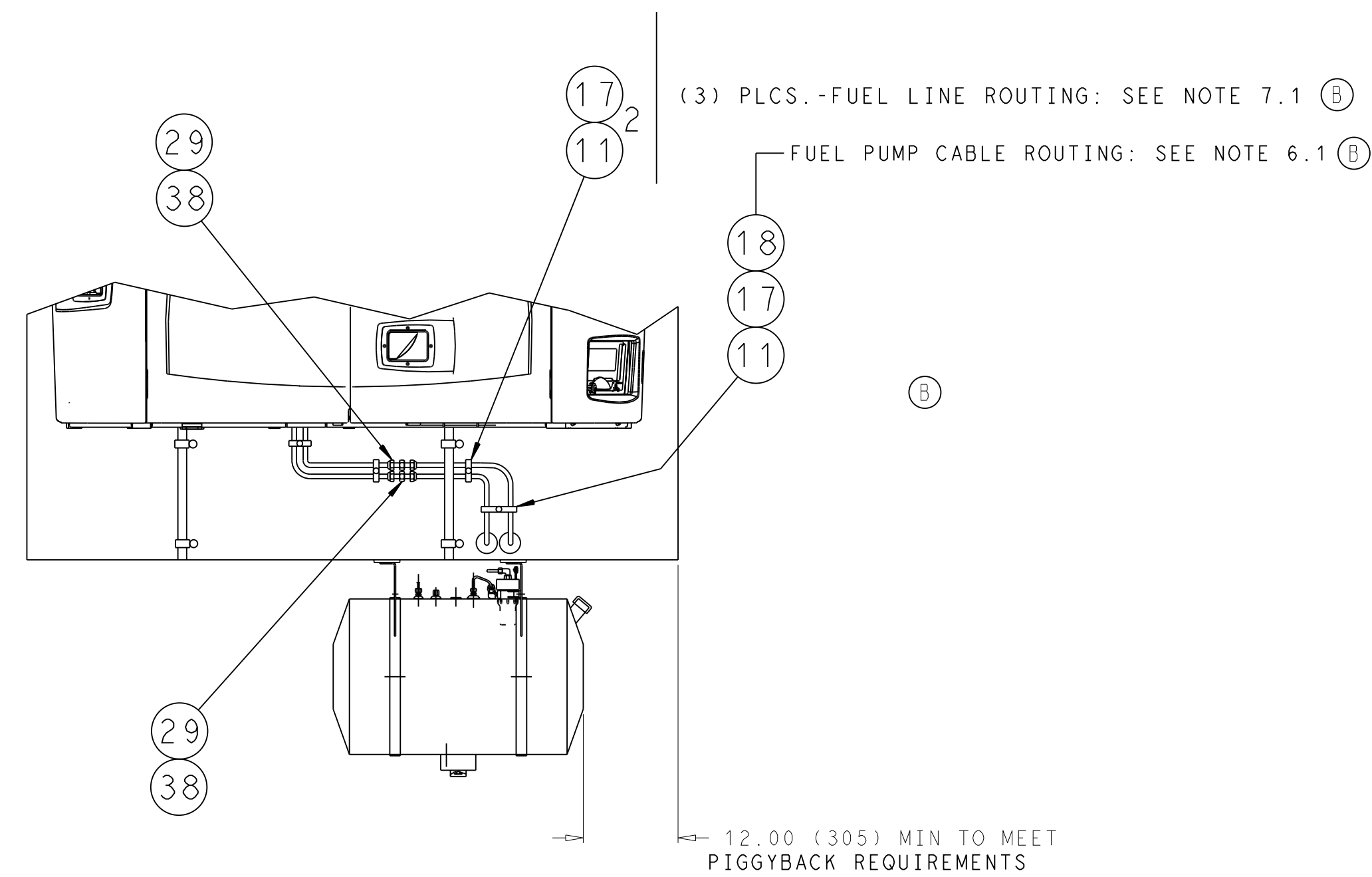
SHEET INDEX	REV	B	A	B	A	A
	SHEET	1	2	3	4	5
DRAWING NO. 98-02634						
						REV B
						SHEET 1 of 5



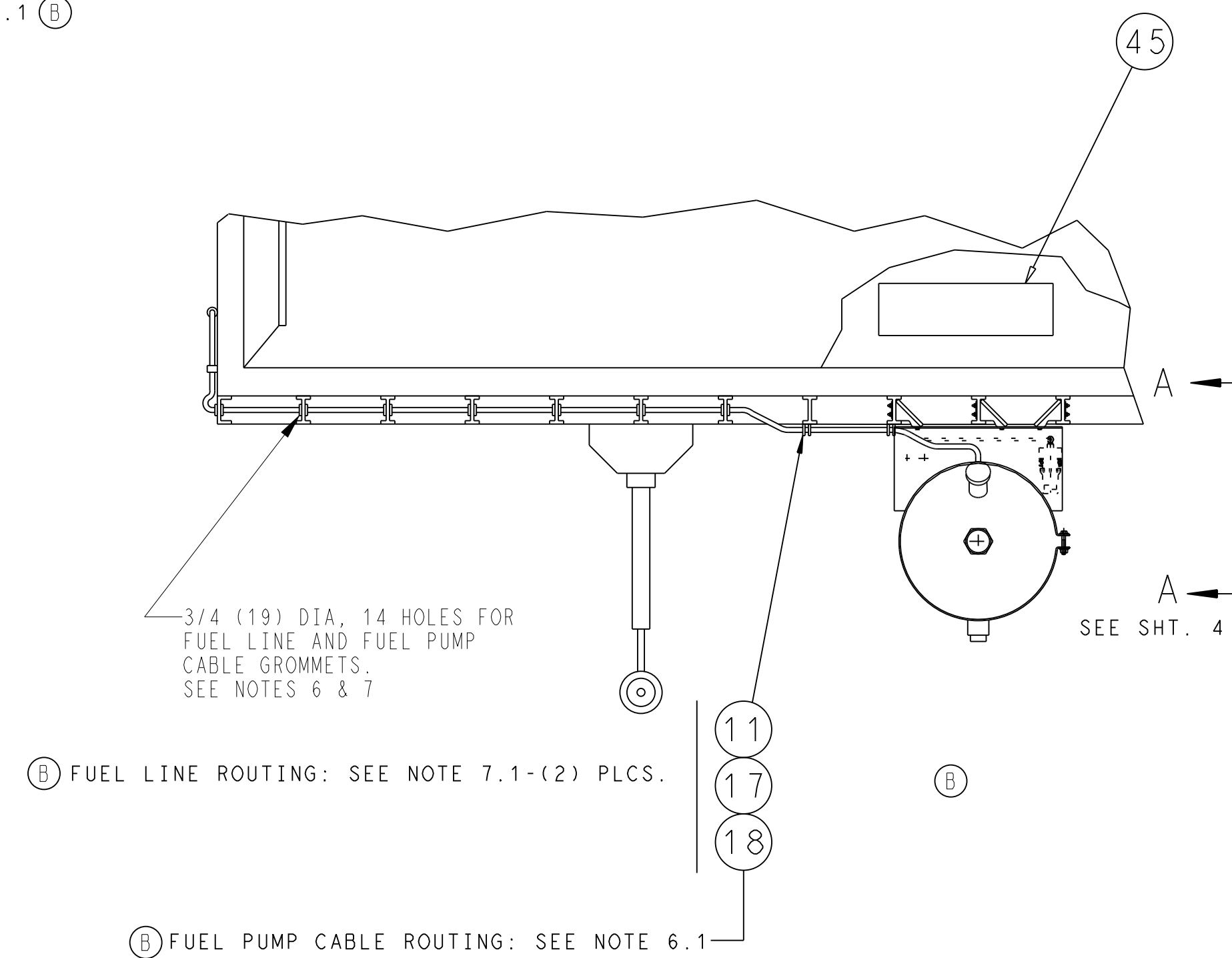
TANK STRAP & GASKET DETAIL

NOTE: ADD GASKET SUPPLIED W/STRAP PACKAGE PRIOR TO MOUNTING STRAP TO TANK

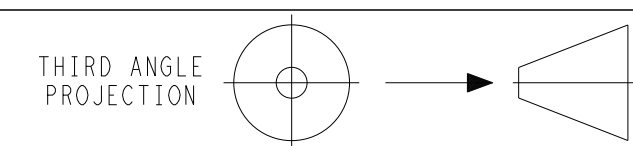
A	INITIAL PRODUCTION RELEASE	AUG-7-14	BGC			72N0073P14	THIRD ANGLE PROJECTION 	IMPERIAL INCH FORMAT: UNLESS OTHERWISE SPECIFIED DIMENSIONS ARE IN INCHES WITH METRIC CONVERSIONS IN [MILLIMETERS]	TITLE INSTALLATION INSTRUCTIONS 22" DIA FUEL TANKS, 30 & 50 GALLONS	DRAWING NO.	REV
SYM	REVISION RECORD	DATE	BY	ENGR.	M.E.	NPCA NO.				98-02634	A



TYPICAL TANK ARRANGEMENT



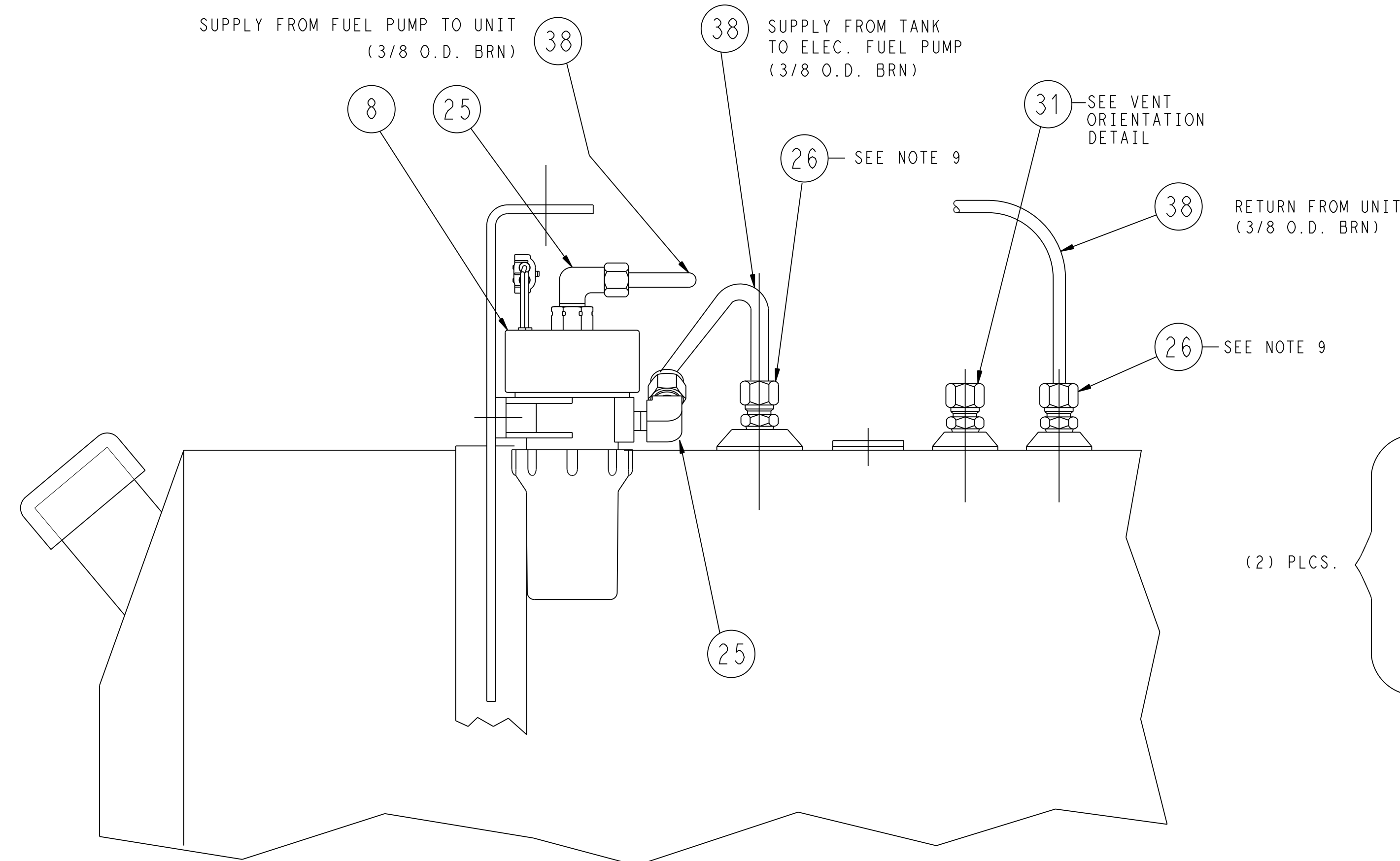
B	REMOVED "WITHOUT ELEC. FUEL PUMP" CALLOUTS 11 & 17; REPLACED IT. 18 NOTE "WITH ELEC. FUEL PUMP" WITH ...SEE NOTE 6.1; ADDED " ...SEE NOTE 7.1" IN 2 PLACES	06OCT2015	KFV			72N0032P15
A	INITIAL PRODUCTION RELEASE	AUG-7-14	BGC			72N0073P14
SYM	REVISION RECORD	DATE	BY	ENGR.	M.E.	NPCA NO.



IMPERIAL INCH FORMAT:
 UNLESS OTHERWISE SPECIFIED
 DIMENSIONS ARE IN INCHES WITH
 METRIC CONVERSIONS IN [MILLIMETERS]

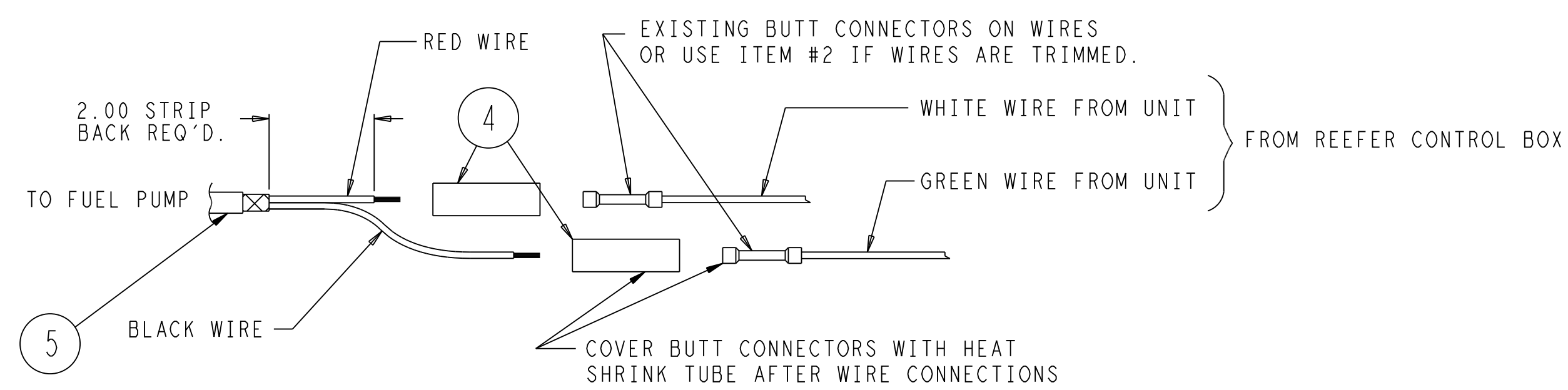
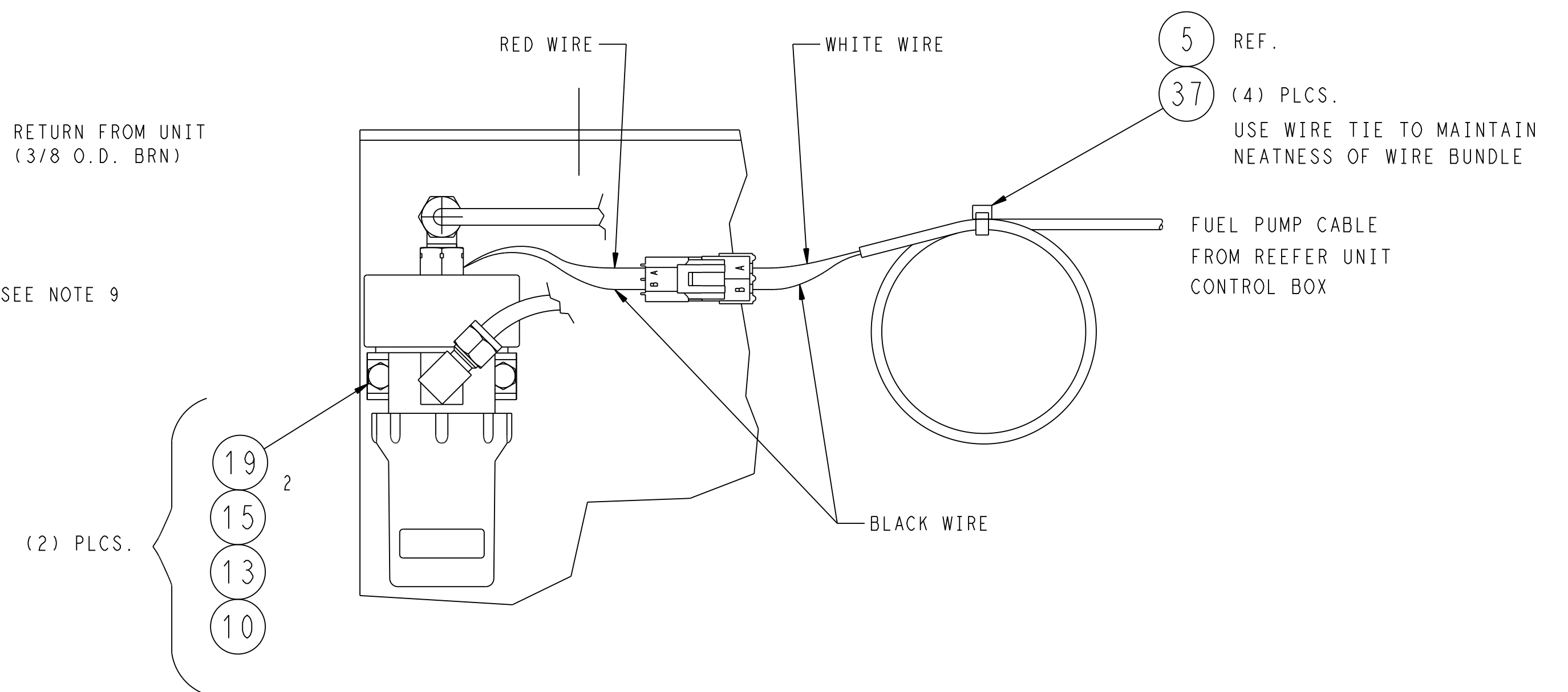
TITLE
 INSTALLATION INSTRUCTIONS
 22" DIA FUEL TANKS, 30 & 50 GALLONS

DRAWING NO.	98-02634	REV	B
	SHEET 3 OF		

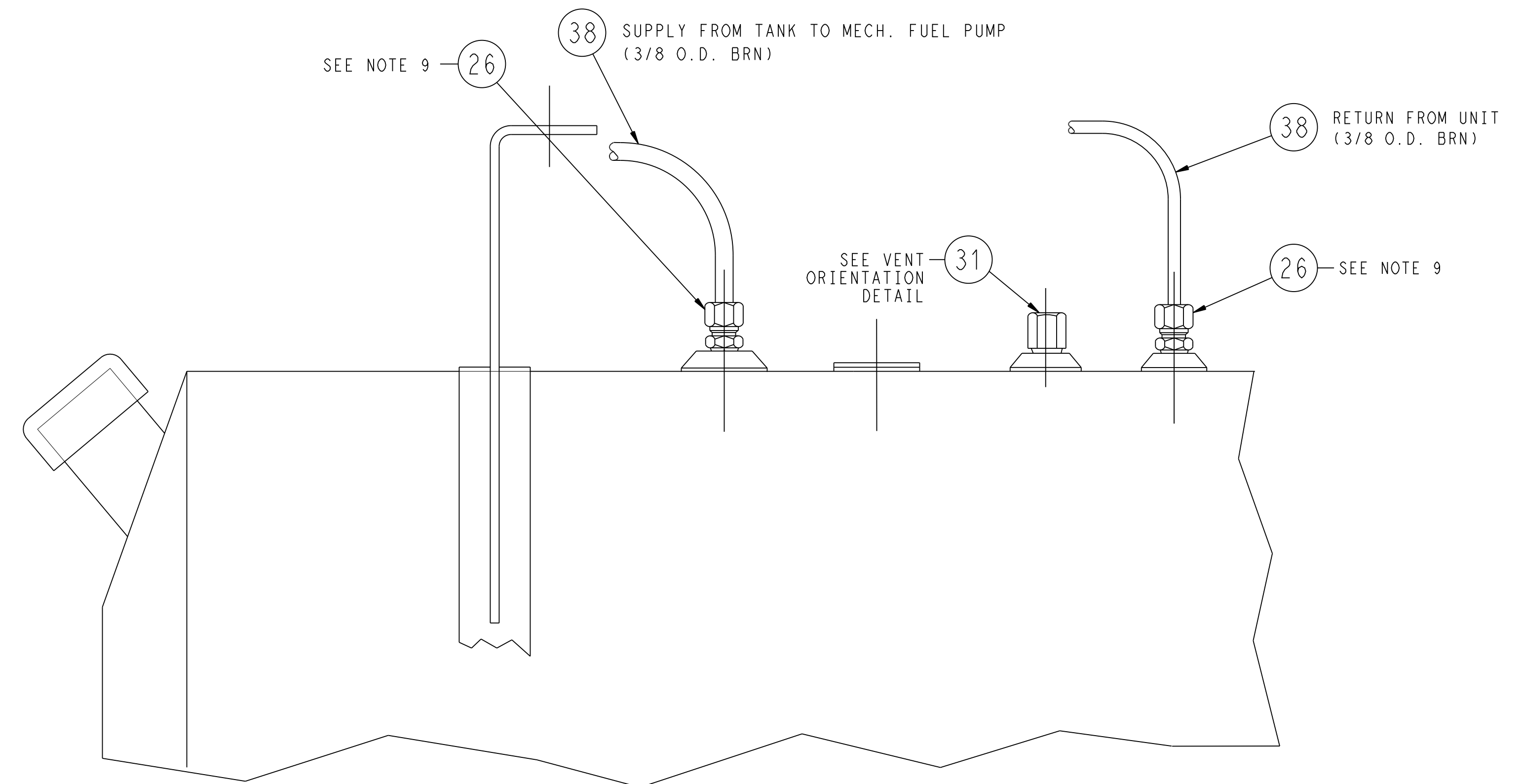


VIEW A - A (SHT 3)

FOR KITS WITH ELECTRIC FUEL PUMP



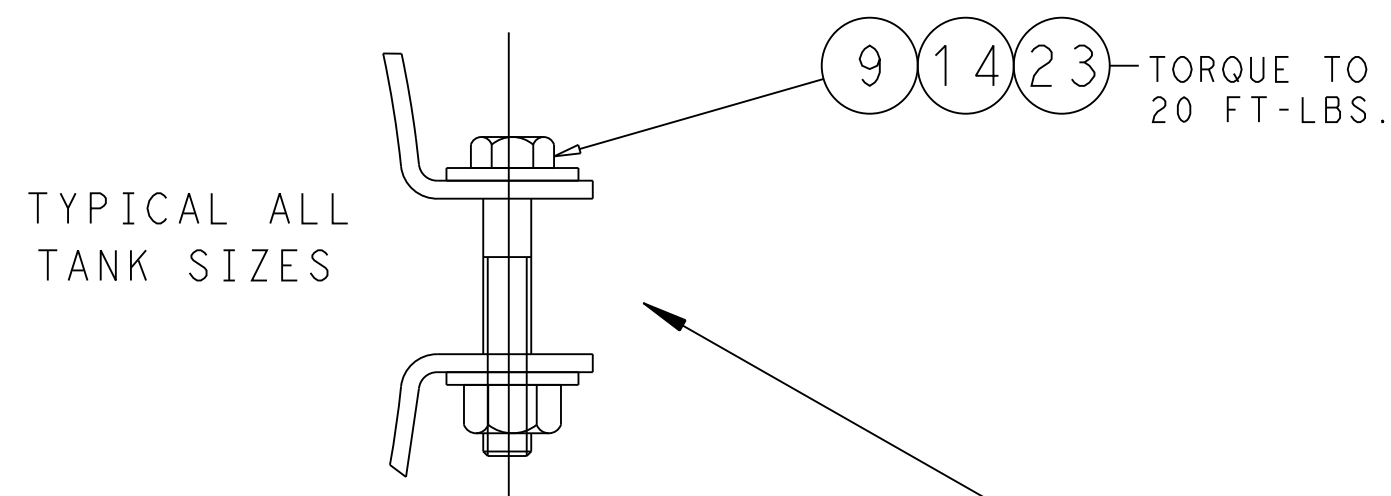
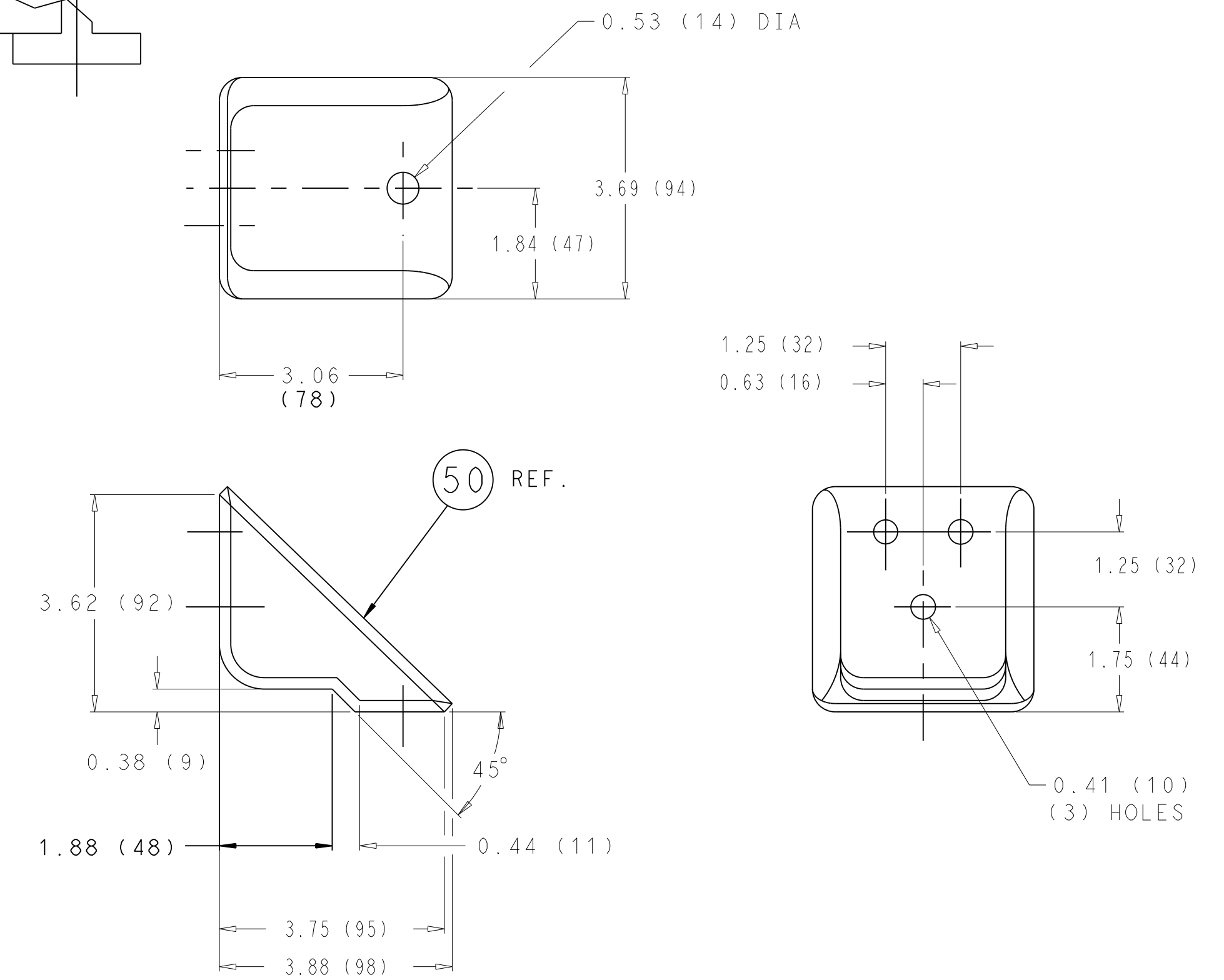
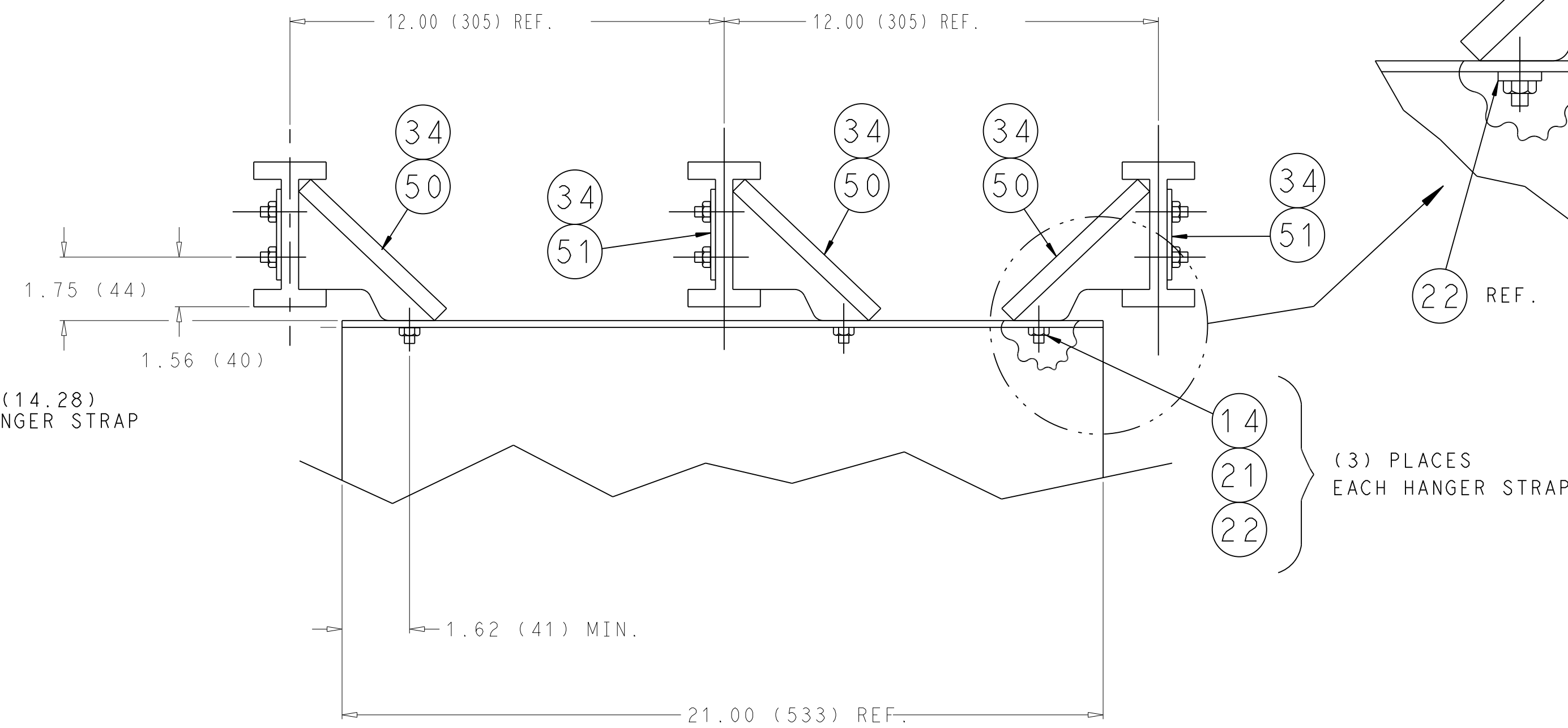
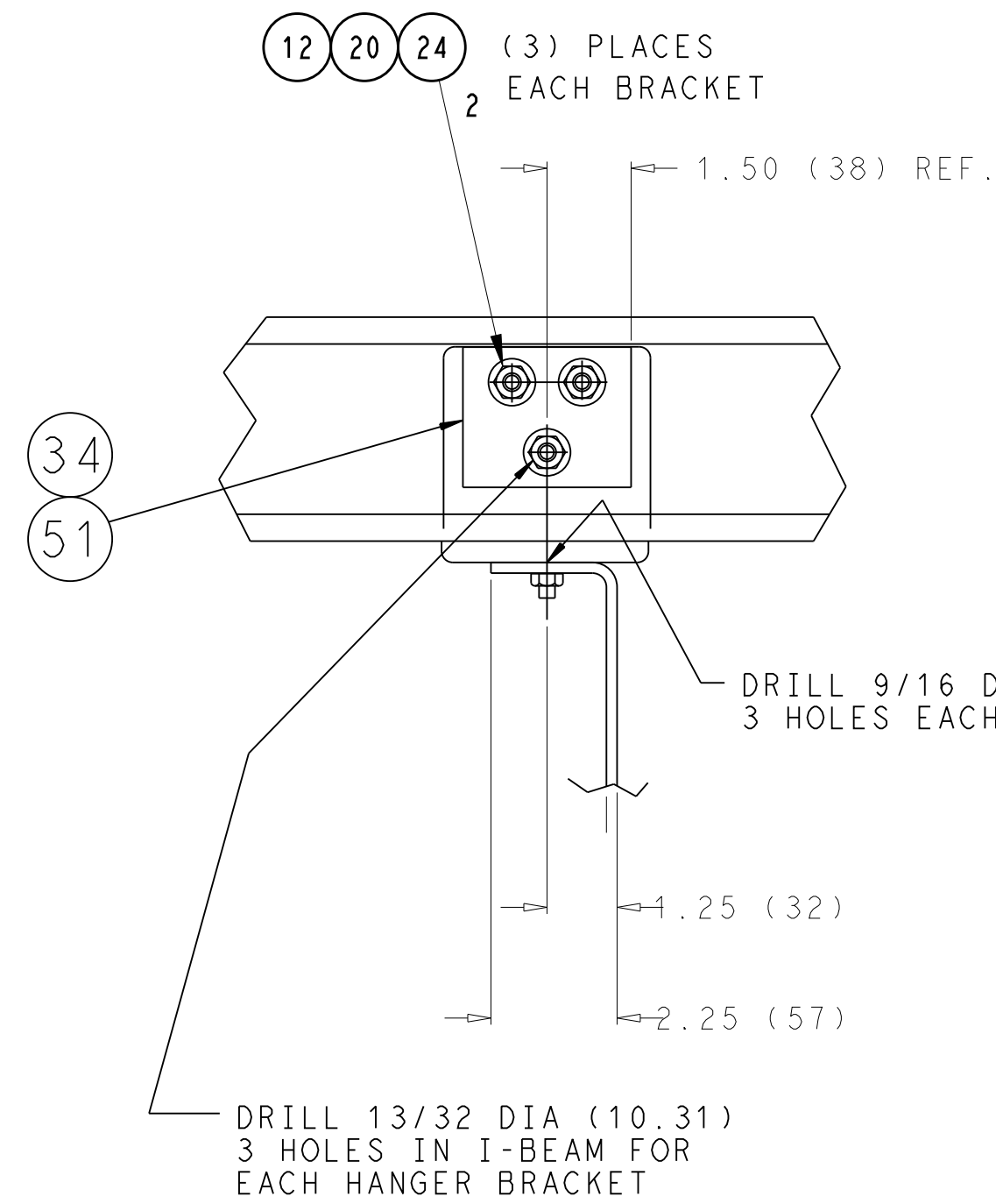
ELECTRIC FUEL PUMP CABLE CONNECTIONS
AT REEFER UNIT CONTROL BOX



VIEW A - A (SHT 3)

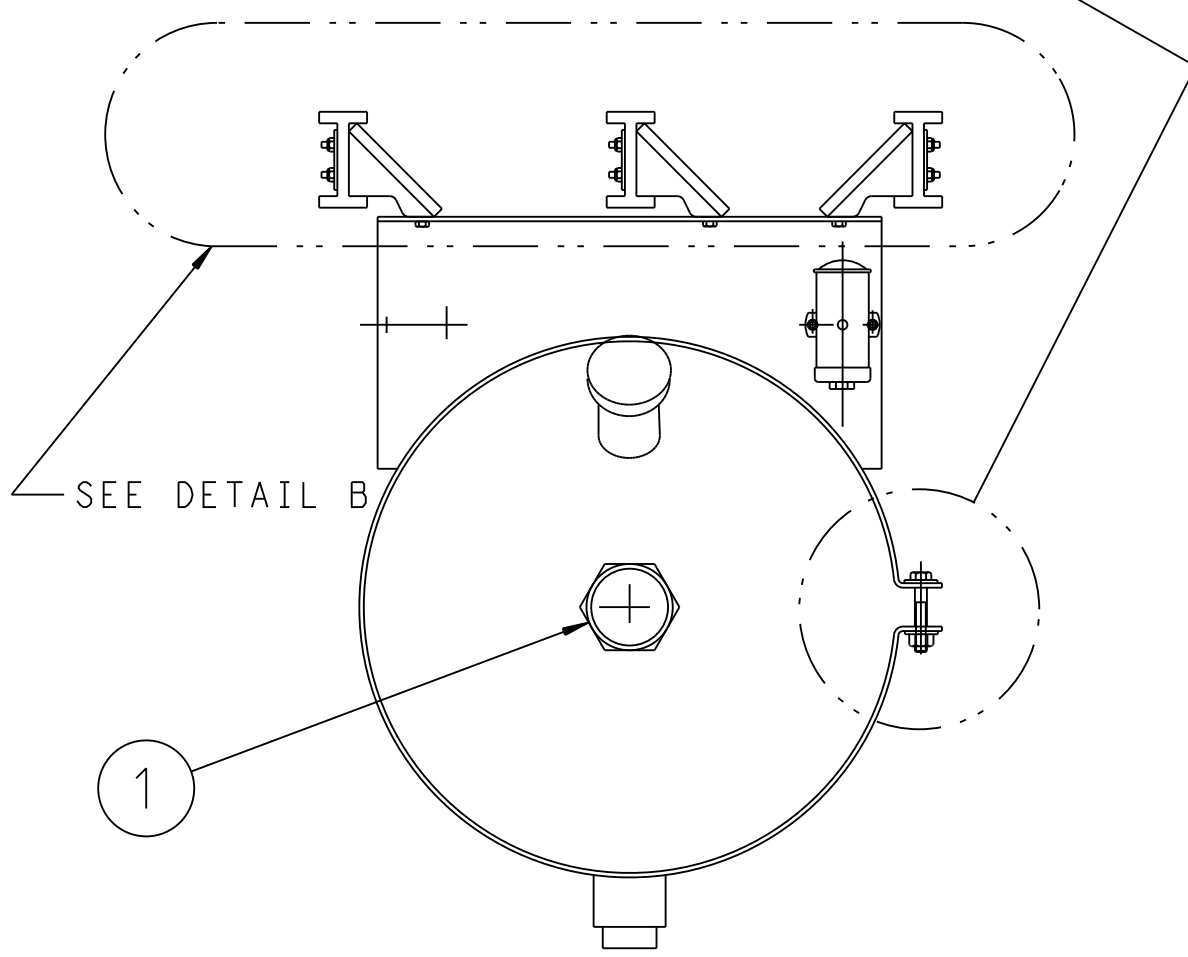
FOR KITS WITHOUT ELECTRIC FUEL PUMP

A	INITIAL PRODUCTION RELEASE	AUG-7-14	BGC			72N0073P14	THIRD ANGLE PROJECTION	IMPERIAL INCH FORMAT: UNLESS OTHERWISE SPECIFIED DIMENSIONS ARE IN INCHES WITH METRIC CONVERSIONS IN (MILLIMETERS)	TITLE INSTALLATION INSTRUCTIONS 22" DIA FUEL TANKS, 30 & 50 GALLONS	DRAWING NO. 98-02634	REV A
SYM	REVISION RECORD	DATE	BY	ENGR.	M.E.	NPCA NO.				SHEET 4 OF	

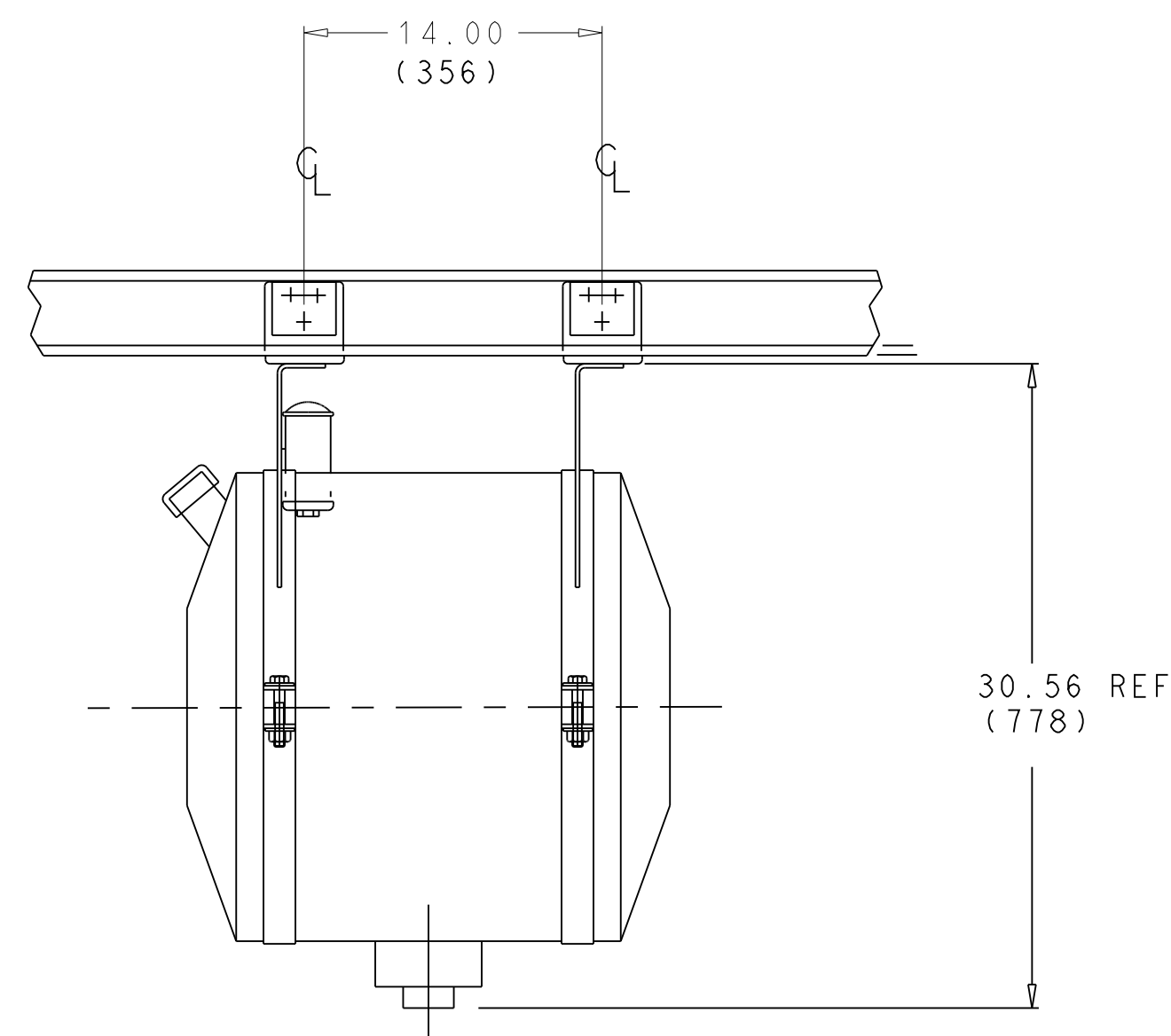


DETAIL B

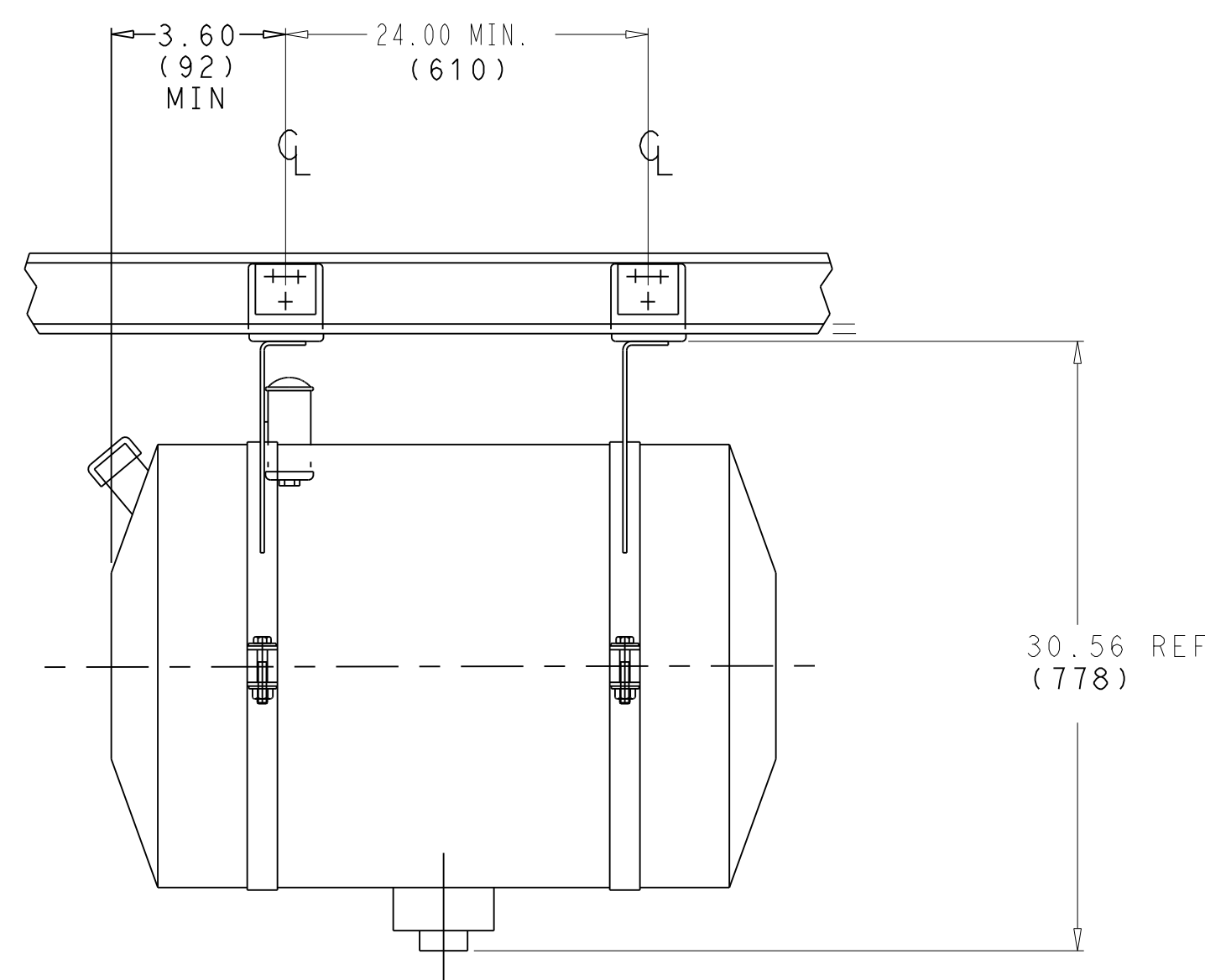
HANGER BRACKET DETAIL



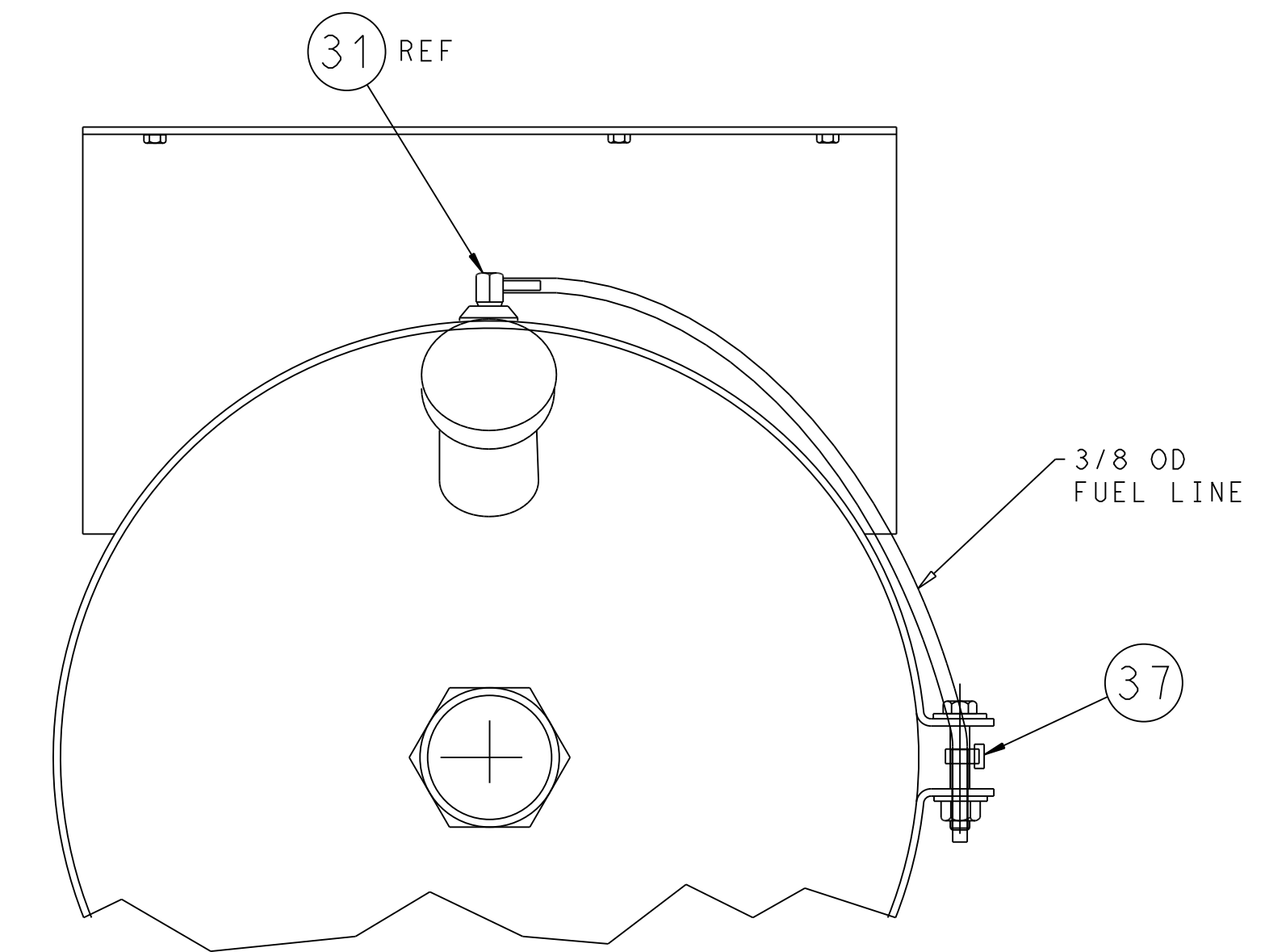
TYPICAL



30 GALLON TANK



50 GALLON TANK



VENT ORIENTATION DETAIL

ORIENTATE FUEL TANK VENT BARBED FITTING TO FACE TOWARDS REAR TRAILER DOOR. CUT 18.00 INCHES OFF 3/8 FUEL LINE AND INSTALL ONTO VENT THEN ROUTE TO TANK STRAP BOLT AND SECURE TO BOLT WITH WIRE TIE.

A	INITIAL PRODUCTION RELEASE	AUG-7-14	BGC			72N0073P14	THIRD ANGLE PROJECTION	IMPERIAL INCH FORMAT: UNLESS OTHERWISE SPECIFIED DIMENSIONS ARE IN INCHES WITH METRIC CONVERSIONS IN [MILLIMETERS]	TITLE	INSTALLATION INSTRUCTIONS 22" DIA FUEL TANKS, 30 & 50 GALLONS	DRAWING NO.	98-02634	REV	A
SYM	REVISION RECORD	DATE	BY	ENGR.	M.E.	NPCA NO.					SHEET 5 OF			