

UNITED TECHNOLOGIES  
CARRIER  
TRANSCOLD

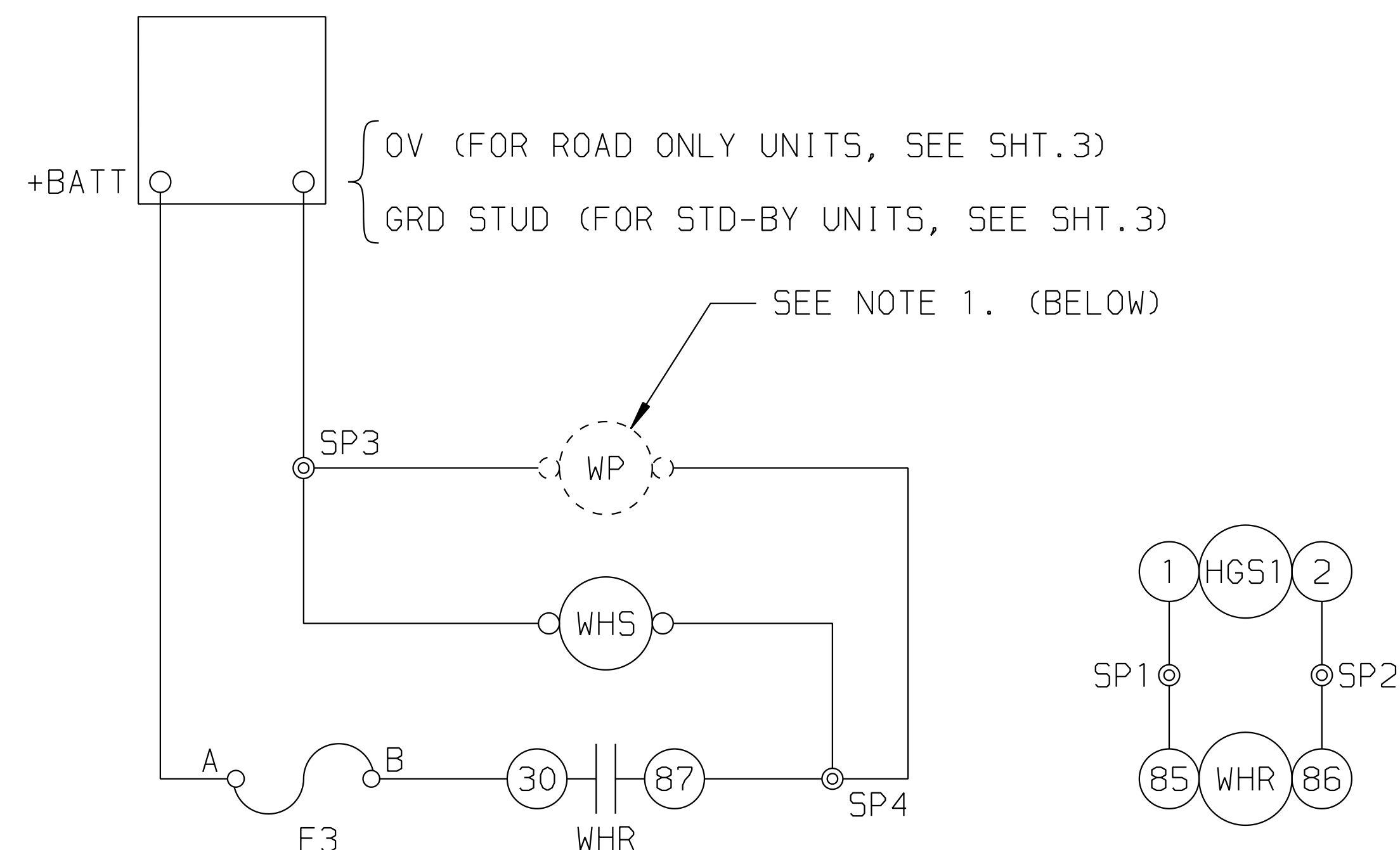
Carrier Transicold Division  
Carrier Corporation  
P.O. Box 4805  
Syracuse, New York 13221

THIS DOCUMENT IS THE PROPERTY OF CARRIER CORPORATION AND IS DELIVERED UPON THE EXPRESS CONDITION THAT THE CONTENTS WILL NOT BE DISCLOSED OR USED WITHOUT CARRIER CORPORATION'S WRITTEN CONSENT.

SUBMISSION OF THESE DRAWINGS OR DOCUMENTS DOES NOT CONSTITUTE PART PERFORMANCE OR ACCEPTANCE OF CONTRACT

PART NO.	MODEL DESCRIPTION
98-03233-00	305 WATER HEAT ONLY

OPTIONAL PARTS	
PART NO.	PART DESCRIPTION
30-01124-00	WATER PUMP (12V DC)



### SCHEMATIC

- ⊙ INDICATES A SPLICE POINT.
- ① COMPONENT CONNECTION NUMBER OR LETTER.
- LIGHT LINES INDICATES WIRES IN THE SYSTEM.
- INDICATES STANDARD OPTIONS.
- INDICATES A CONNECTION, WIRE, LUG, ETC.
- ⊥ NORMALLY OPEN CONTACTS.

SYMBOL	DESCRIPTION
F3	FUSE 15A
HGS1	HOT GAS SOLENOID 1
WHR	WATER HEAT RELAY
WHS	WATER HEAT SOLENOID
WP	WATER PUMP (OPTIONAL)

NOTE 1. WATER PUMP OPTION INSTALLATION REQUIRES PUMP TO HAVE A FLOODED INLET & AN INSTALLATION LOCATION THAT PROVIDES GENEROUS AIR FLOW FOR MOTOR COOLING.

CONTENTS	SHEET
SCHEMATIC, NOTES & EVAPORATOR PREPARATION	1
WATER COIL INSTALLATION	2
ELECTRICAL CONNECTIONS	3
COIL TEMPLATE	4

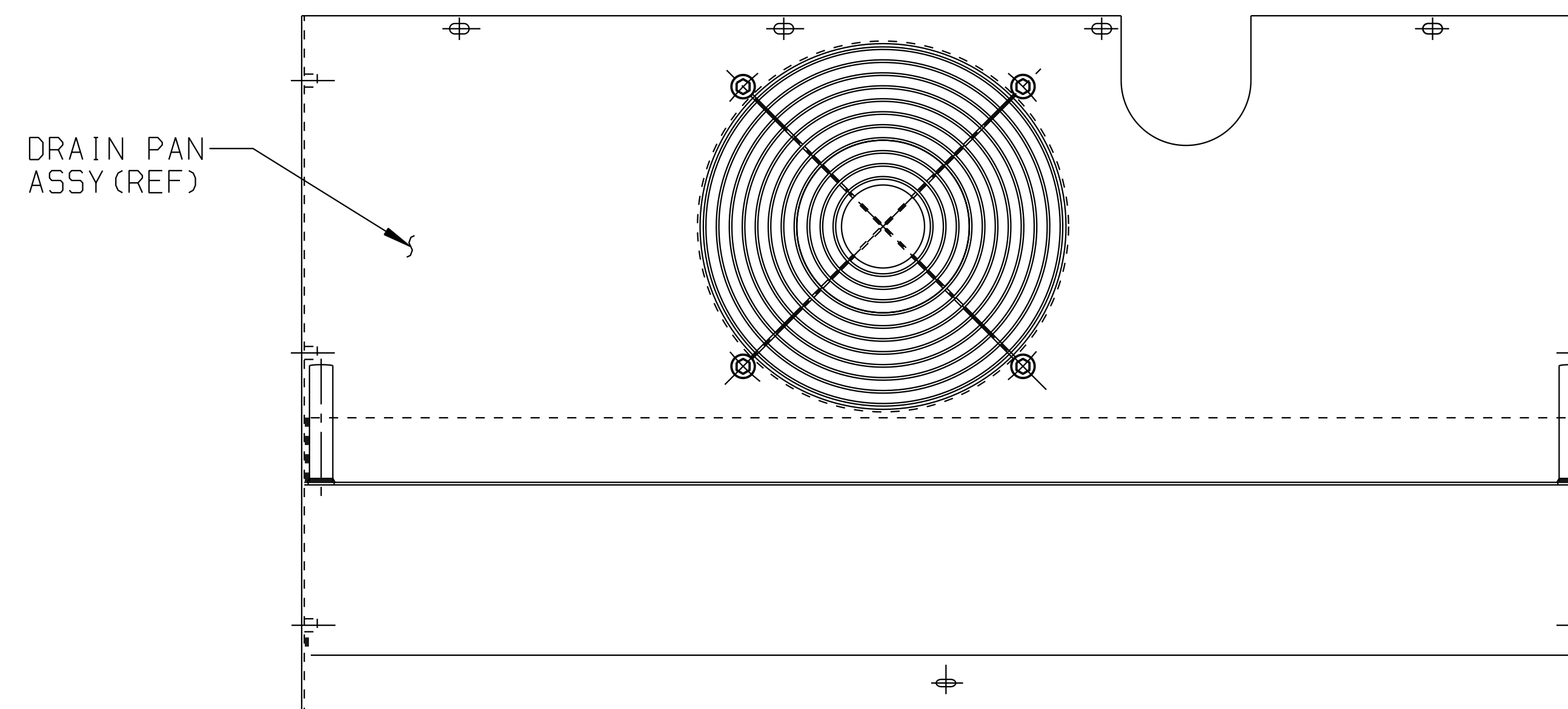
## WATER HEAT INSTALLATION PROCEDURE

**CAUTION:** TURN THE UNIT OFF, DISCONNECT THE BATTERY & ALLOW SUFFICIENT TIME FOR THE ENGINE & ITS FLUIDS TO COOL BEFORE PROCEEDING.

**NOTE:** IT IS EXTREMELY IMPORTANT THAT THE UNIT REMAIN DISABLED THROUGHOUT THIS PROCEDURE.

**ASSEMBLY NOTE:** APPLY THREAD SEALANT DURING ASSEMBLY AS REQUIRED TO ALL FITTINGS.

- 1.0 VERIFY THAT ALL OF THE PIECES FROM THE PARTS LIST ARE PRESENT.
- 2.0 REMOVE THE DRAIN PAN FROM THE EVAPORATOR CASING. RETAIN HARDWARE FOR RE-USE DURING RE-ASSEMBLY.



SHEET	REV	B	B	A	A
INDEX	SHEET	1	2	3	4

SEE SEPARATE PARTS LIST

B	UPDATED SHT. INDEX, SEE SHT. 2; ADDED OPTIONAL PARTS CHART, NOTE 1, & SCHEM., SYMBOL LEGENDS PER ECN 71N0222P13					MGC	1 MAY 2013
A	INITIAL RELEASE PER PCA71N211GPO6					MGC	10 APR 2006
SYM	REVISION RECORD	ENGRG.	DATE	APPLICATION ENGRG.	DATE	DRAWN BY	DATE

SUPERSEDES

TITLE

INSTALLATION INSTRUCTIONS  
305 WATER HEAT

DRAWING NO.

98-03233

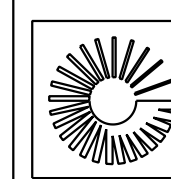
REV

B

SHT. 1 OF 4





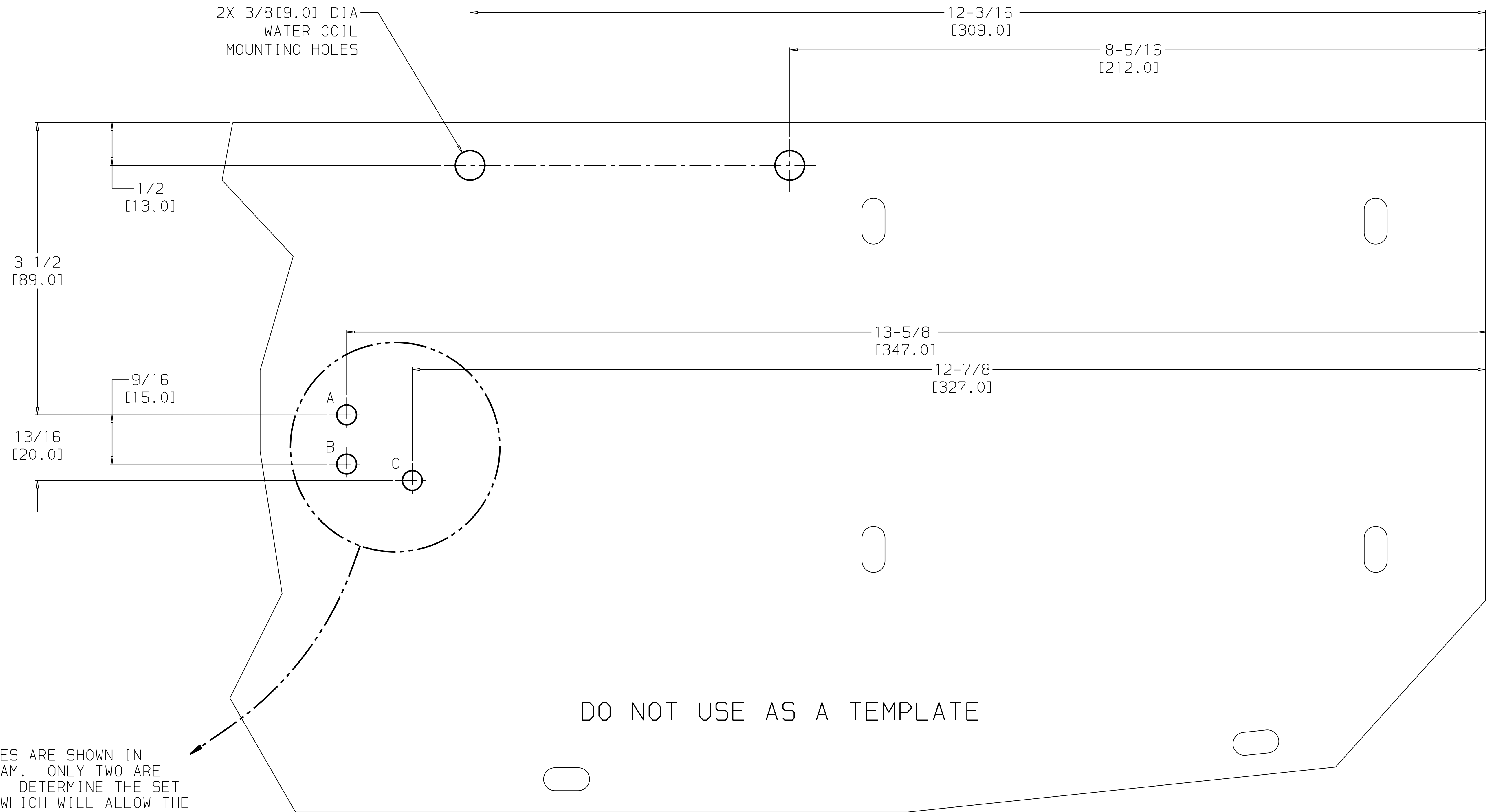


UNITED  
TECHNOLOGIES  
CARRIER  
TRANSCOLD

Carrier Transcold Division  
Carrier Corporation  
P.O. Box 4805  
Syracuse, New York 13221

THIS DOCUMENT IS THE PROPERTY OF CARRIER CORPORATION  
AND IS DELIVERED UPON THE EXPRESS CONDITION THAT THE  
CONTENTS WILL NOT BE DISCLOSED OR USED WITHOUT CARRIER  
CORPORATION'S WRITTEN CONSENT.

SUBMISSION OF THESE DRAWINGS OR DOCUMENTS  
DOES NOT CONSTITUTE PART PERFORMANCE OR  
ACCEPTANCE OF CONTRACT



NOTE: THREE HOLES ARE SHOWN IN THE DIAGRAM. ONLY TWO ARE REQUIRED. DETERMINE THE SET OF HOLES WHICH WILL ALLOW THE WATER VALVE TO BE MOUNTED HORIZONTALLY (HOLES A, B OR A, C). THEN DRILL TWO 1/4[6.0] DIA HOLES.

HOLE LAYOUT

A	INITIAL RELEASE PER PCA71N211GP06					MGC	10 APR 2006
1	PRELIMINARY RELEASE.					MGC	30 SEPT 2003
SYM	REVISION RECORD	ENGRG.	DATE	APPLICATION ENGRG.	DATE	DRAWN BY	DATE

SUPERSEDES

TITLE

INSTALLATION INSTRUCTIONS  
305 WATER HEAT

DRAWING NO.  
98-03233  
SHT. 4 OF

REV  
A

23-JUL-1999 : 12:50:07 : ctct03w