

Carrier Transicold Division
Carrier Corporation
P.O. Box 4805
Syracuse, New York 13221

THIS DOCUMENT AND THE INFORMATION CONTAINED THEREIN IS PROPRIETARY TO CARRIER CORPORATION AND SHALL NOT BE USED OR DISCLOSED TO OTHERS, IN WHOLE OR IN PART, WITHOUT THE WRITTEN AUTHORIZATION OF CARRIER CORPORATION.

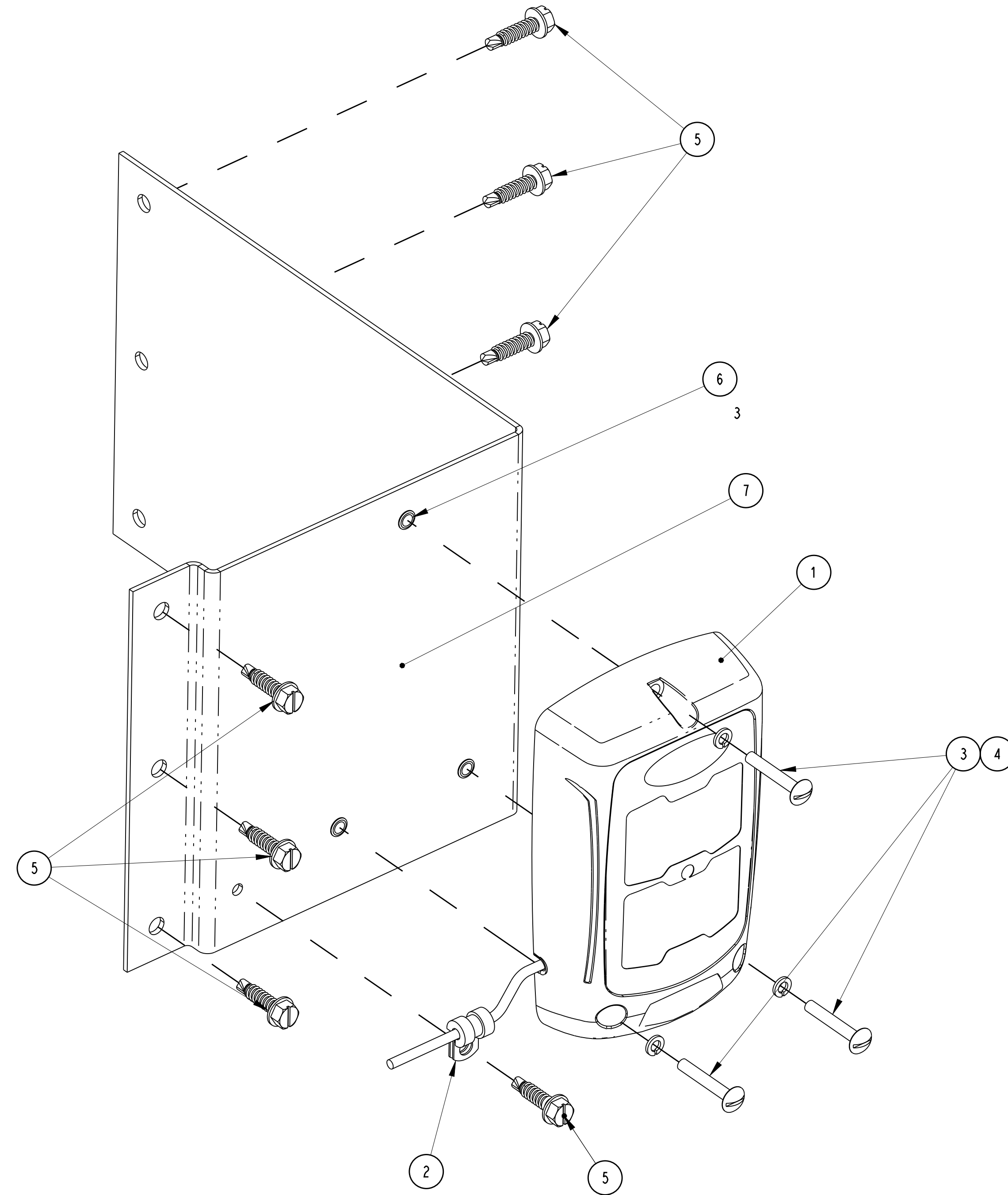
SUBMISSION OF THESE DRAWINGS OR DOCUMENTS DOES NOT CONSTITUTE PART PERFORMANCE OR ACCEPTANCE OF CONTRACT

LIGHT BAR ASSEMBLY AND INSTALLATION INSTRUCTIONS

PART NO.	U.S. ECCN	MODEL DESCRIPTION
98-03246-00	EAR99	ADVANCE/APX MICRO UNITS
98-03246-01	EAR99	SUMMIT MICRO UNITS
98-03246-02	EAR99	TK UNITS
98-03246-03	EAR99	APX UNITS

TIME FOR ASSEMBLY AND INSTALLATION: 1/2 HOUR

VOID



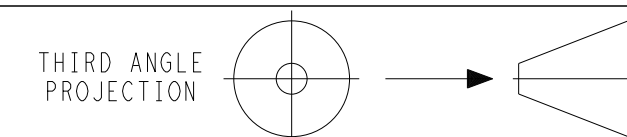
ASSEMBLY:

- THE LIGHT BAR ASSEMBLY REQUIRES ITEMS 1,2,5,7(QTY.1); 3,4(QTY.3); 6(QTY.3).
- LOCATE THE THREE (3) MACHINE SCREWS (ITEM 3), 3 LOCK WASHERS (ITEM 4), LIGHT BAR (ITEM 1), AND BRACKET (ITEM 7) WITH THREE (3) RIVNUTS (ITEM 6) ALREADY INSTALLED. PASS THE SCREWS AND LOCK WASHERS THROUGH THE HOLES OF THE LIGHT BAR AND MOUNT THE LIGHT BAR TO THE BRACKET.
 - TIGHTEN ALL SCREWS SECURELY.
 - PLACE ONE (1) CUSHION CLAMP (ITEM 2) AROUND HARNESS AS SHOWN, AND FASTEN IT TO THE BRACKET USING ONE (1) THREAD FORMING SCREW (ITEM 5).

INSTALLATION:

- THE LIGHT BAR IS TO BE MOUNTED ON THE FRONT, ROADSIDE RADIUS OF THE TRAILER. IT SHOULD BE MOUNTED AT A HEIGHT SUCH THAT IT IS EASILY VIEWED IN THE MIRROR OF THE TRUCK. CARRIER RECOMMENDS LOCATING THE BOTTOM EDGE OF THE BRACKET 42" UP FROM THE 5TH WHEEL PLATE OF THE TRAILER.
- MOUNT THE LIGHT BAR ASSEMBLY TO THE TRAILER USING SIX (6) SCREWS (ITEM 5).
- ROUTE HARNESS STRAIGHT ACROSS FRONT OF THE TRAILER TO THE UNIT FRAME, DOWN THE FRAME AND UNDERNEATH THE UNIT. USE CUSHION CLAMPS (ITEM 2) AND THREAD-FORMING SCREWS (ITEM 5) AS REQUIRED TO HOLD HARNESS IN PLACE.
- UNIT SPECIFIC INSTRUCTIONS:
 - APX UNITS (WITH 3 PIN CONNECTOR):
 - LOCATE THE 3-PIN LIGHT BAR CONNECTOR (W/ ITS FEMALE MATING DUMMY CAP) ON THE APX UNIT HARNESS LOCATED AT THE FRONT ROADSIDE CORNER POST NEXT TO THE DISPLAY. (ITS WIRES - FROM CAVITY A TO CAVITY C - ARE MARKED : NORTH AMERICA UNITS : PCM7-LBA, SP2-LBB, AND 3MM7-LBC.)
 - REMOVE THE FEMALE MATING CAP AND REMOVE THE CAVITY SEALS FROM IT.
 - LOCATE THE FEMALE 8-PIN CONNECTOR OF THE LIGHT BAR.
 - ONE AT A TIME, AND IN THE FOLLOWING STEPS, RELOCATE THE PINS, SEALS AND WIRES FROM THE 8-PIN CONNECTOR BODY TO THE 3-PIN CONNECTOR BODY JUST REMOVED FROM THE APX UNIT HARNESS:
 - REMOVE THE PIN FROM THE B CAVITY OF THE 8-PIN CONNECTOR AND INSTALL IN THE A CAVITY OF THE 3-PIN CONNECTOR. (RED WIRE)
 - REMOVE THE PIN FROM THE G CAVITY OF THE 8-PIN CONNECTOR AND INSTALL IN THE B CAVITY OF THE 3-PIN CONNECTOR. (BLACK WIRE)
 - REMOVE THE PIN FROM THE H CAVITY OF THE 8-PIN CONNECTOR AND INSTALL IN THE C CAVITY OF THE 3-PIN CONNECTOR. (WHITE WIRE)
 - CONNECT THE NEWLY ASSEMBLED FEMALE 3-PIN CONNECTOR ON THE LIGHT BAR TO THE MATING 3-PIN MALE CONNECTOR OF THE APX UNIT HARNESS.
 - DISCARD THE 8-PIN CONNECTOR.
 - INSPECT POWER CONTROL MODULE (PCM) TO SEE IF 5A IS INSTALLED IN SLOT F11 (LIGHT BAR POWER). IF FUSE IS MISSING INSTALL 5A FUSE SUPPLIED INTO SLOT F11.
 - THE LIGHT BAR CONFIGURATION WITHIN THE MICRO MUST BE SET TO "2-LIGHT" FOR THE LIGHT BAR TO FUNCTION PROPERLY. THIS CAN BE DONE W/ TRU-TECH PC SOFTWARE VIA THE USB PORT, OR IT CAN BE DONE AT THE KEYPAD IN CONFIGURATION MODE (FOUND AT CONFIGURATION SETTINGS - OTHER SETTINGS - LIGHT BAR).
 - APX UNITS (WITH 8 PIN CONNECTOR):
 - BEHIND THE FRONT ROADSIDE FRAME CORNER POST, LOCATE THE LIGHT BAR PLUG THAT MATCHES THE PLUG ON THE LIGHT BAR HARNESS. REMOVE THE SEAL CAP AND PLUG THE CONNECTORS TOGETHER.
 - INSPECT POWER CONTROL MODULE (PCM) TO SEE IF 5A IS INSTALLED IN SLOT F11 (LIGHT BAR POWER). IF FUSE IS MISSING INSTALL 5A FUSE SUPPLIED INTO SLOT F11. (NOT FOR VECTOR 1350).
 - THE LIGHT BAR CONFIGURATION WITHIN THE MICRO MUST BE SET TO "2-LIGHT" FOR THE LIGHT BAR TO FUNCTION PROPERLY. THIS CAN BE DONE W/ TRU-TECH PC SOFTWARE VIA THE USB PORT, OR IT CAN BE DONE AT THE KEYPAD (EXCEPT FOR VECTOR 1350) IN CONFIGURATION MODE (FOUND AT CONFIGURATION SETTINGS - OTHER SETTINGS - LIGHT BAR).
- ADVANCE UNITS:
 - BELOW THE UNIT, AT THE BACK OF THE CONTROL BOX, LOCATE THE LIGHT BAR PLUG THAT MATCHES THE PLUG ON THE LIGHT BAR HARNESS. REMOVE THE SEAL CAP AND PLUG THE CONNECTORS TOGETHER.
 - ENSURE THAT THE OPERATIONAL SOFTWARE IS AT LEAST AT VERSION 03.03.00. UPGRADING TO THE LATEST SOFTWARE VERSION IS RECOMMENDED, AND IS AVAILABLE FROM AUTHORIZED CARRIER TRANSCOLD DEALERS.
 - THE LIGHT BAR CONFIGURATION WITHIN THE MICRO MUST BE SET TO "TWO LIGHT" LIGHT BAR FOR IT TO FUNCTION PROPERLY. THIS CAN BE DONE W/ REEFERMANAGER PC SOFTWARE USING THE SERIAL PORT, OR WITH A CONFIGURATION PC CARD. IT CAN ALSO BE DONE AT THE KEYPAD IN CONFIGURATION MODE.
- SUMMIT UNITS:
 - INSTALL JUMPER HARNESS (ITEM 10) TO LIGHT BAR ASSY CABLE. BELOW THE UNIT, AT THE BACK OF THE CONTROL BOX, LOCATE THE PLUGS FOR DATA RECORDER AND LIGHT BAR THAT MATCHES THE PLUGS ON THE LIGHT BAR JUMPER HARNESS. REMOVE THE SEAL CAPS AND PLUG THE CONNECTORS TOGETHER.
- TK UNITS:
 - INSTALL JUMPER (ITEM 10) TO LIGHT BAR ASSY CABLE. BELOW THE UNIT, LOCATE THE PLUG THAT MATCHES THE PLUG ON THE JUMPER. REMOVE THE SEAL CAP AND PLUG THE CONNECTORS TOGETHER.

SYM	REVISION RECORD	DATE	BY	ENGR.	M.E.	NPCA NO.
H	REVISED INSTRUCTIONS TO PREVIOUS REVISION F.	14 AUG 2020	ZMG			ECN1134849
G	REPLACED BRACKET IT.7, CHANGED ORIENTATION OF LIGHT BAR IT.1. REMOVED CLAMP IT.2, REDUCED QUANTITY OF SCREWS IT.5, UPDATED AND RENUMBERED ASSEMBLY INSTRUCTIONS TO CORRECT QTY'S AND REMOVE NOTE FOR CLAMP MOUNTING TO BRACKET.	06 MAR 2020	ZMG			72N0342P19
F	UPDATED SPEC. 7.1.7 & 7.1.10.	14 JUL 2017	LT-SPT	RC		72N0237P17
E	RELEASE MODIF IN E-1	5 MAR 14	B.R.			72E0008P14
E-1	UPDATE NOTE 7.1.1, 7.1.10 AND 7.1.11	19 FEV 14	B.R.			
D	VOIDED -03 AND ADDED APX TO -00 IN CHART.	13 MAR 13	ZMG			72N0227P13



IMPERIAL INCH FORMAT:
UNLESS OTHERWISE SPECIFIED
DIMENSIONS ARE IN INCHES WITH
METRIC CONVERSIONS IN [MILLIMETERS]

TITLE	INSTALLATION INSTRUCTION LED LIGHT BAR ASSY	DRAWING NO.	98-03246	REV	H
SUPERSEDES:		PART CLASSIFICATION: US SEE CHART		SHEET 1 of 1	

DRAWING CLASSIFICATION: US EAR99