



Diesel Auxiliary Power Units



PROVIDING THE COMFORT
AND CONVENIENCE OF HOME



PERFORMANCE SPECIFICATIONS

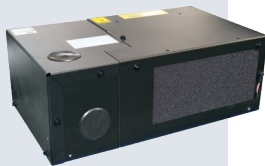
APU Power Plant

Dimensions:
24.2" x 26.8" x 30.7"
(615 x 681 x 780 mm)
Weight:
395 lbs (179 kg)*



Under Bunk Climate Control Unit (CCU) with Climate Control Module (CCM)

Dimensions - CCU:
26.1" x 15.7" x 9.4"
(663 x 399 x 239 mm)
Weight - CCU with CCM:
76 lbs (35 kg)



Condensing Unit

Dimensions:
26.5" x 8" x 16.9"
(673 x 203 x 429 mm)
Weight:
26 lbs (12 kg)



Aspen Interface

Programmable control for air conditioning, heating, fan and more



Provides the exceptional combination of cooling, heating, cab power, battery charging, engine heating and more. Designed for high performance, versatility, durability, reliability and ease of use.

For rugged service: Uses marine-grade components and enhanced alloys for strength and corrosion resistance. Automotive-grade, IP67-rated electronics protect against sand, dust and water.

Easy, intuitive climate control: The Aspen Interface makes temperature management as effortless as a home thermostat. Illuminated knob to select cab temperature, supported by a backlit digital information display. Four climate control modes: **Automatic Comfort-Monitor, Heating, Cooling and Fan-only.**

Added Versatility: Aspen's standard feature set includes **Battery Monitor** mode to maintain battery charge, **Winter Watch™** mode for engine pre-heating, and **Manual Programming** mode, enabling automatic functionality based on user pre-sets.

Customizable: Expand capabilities via ancillary inverter, fuel-fired Carrier Cabin Heater, shore power module and more.

Easily Serviceable: Lightweight, corrosion-free, injection-molded housing cover secured with sturdy quick-release latches for easy access, even behind fairings. CabinTech PC software and USB connectivity make setup, service and troubleshooting faster and easier for technicians.

Three Core Models

Integrated (Aspen-INT)

Our most fully featured system, its coolant lines connect to the tractor engine cooling system enabling engine warming via APU coolant exchange.

Stand-alone (Aspen-STA)

Provides the same capabilities as the integrated model, but tractor and APU coolant systems are independent. Unique among stand-alone systems, tractor engine warming is achieved via the tractor's block heater, powered by the APU generator.

Power-only (Aspen-PWR)

Supplies power for hotel loads and can preheat the truck engine via coolant exchange. No cab climate control.

Standard Features Include:

APU Power Plant

Tier 4 final 2-cylinder diesel engine
High power 70 amp alternator
Generator, 6 kW rating @ 110/120V,
60Hz AC (5.2 kW available power)
2000-hour service interval

Under Bunk CCU

Airflow, 343 cfm
Air Conditioning, 12,000 BTU/hr
• Hermetic compressor
• Refrigerant, R-134a
Heating, 8,200 BTU/hr with
standard electric heat

Condensing Unit

Microchannel condenser
Maintenance-free fan motor

Aspen Interface

Single control knob with color LED for heat, cool, auto and fan-only
Backlit LCD display screen
Configurable modes:
• Automatic Comfort Monitor
• Battery Monitor
• Winter Watch low-temperature start

Accessories and Options

Shore power option kit – lets the APU operate via 110/120-VAC household power
Inverter – produces 120 VAC for hotel loads while moving
Carrier Cabin Heater – 7,000 BTU/hr fuel-fired heater
Stand-alone heat shield kit

*Weight shown is for Aspen-INT and Aspen-PWR models. Aspen-STA model differs.

Specifications are subject to change without notice.

Warranty: Product warranty and limitations are outlined in Form 62-12241.

This warranty is applicable only in North America. Consult your Carrier Transcold representative for warranty coverage elsewhere. Form 62-12240 Rev. C.

North America
Carrier Transcold
700 Olympic Drive
Athens, GA 30601 USA

Central America and Mexico
Carrier Transcold
Ejercito Nacional 253-A Piso 5
Colonia Anahuac
11320 Mexico D.F.

©2025 Carrier. All Rights Reserved. Printed in USA 3/25.

Carrier, Carrier Transcold and Aspen are registered trademarks of Carrier Corporation.



www.trucktrailer.carrier.com