



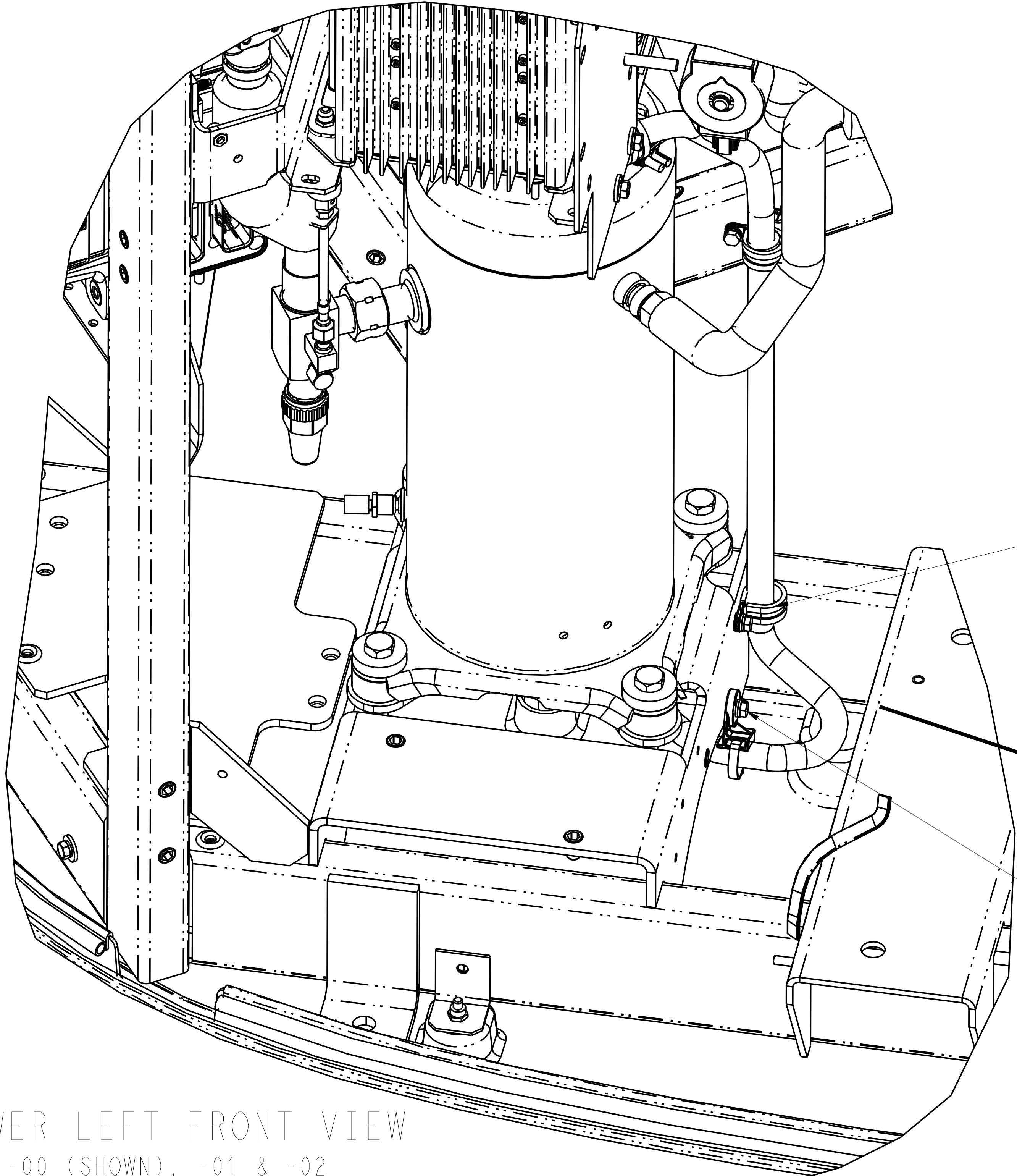
Carrier Transicold Division  
Carrier Corporation  
P.O. Box 4805  
Syracuse, New York 13221

THIS DOCUMENT AND THE INFORMATION CONTAINED THEREIN IS  
PROPRIETARY TO CARRIER CORPORATION AND SHALL NOT BE USED  
OR DISCLOSED TO OTHERS, IN WHOLE OR IN PART, WITHOUT THE  
WRITTEN AUTHORIZATION OF CARRIER CORPORATION.

SUBMISSION OF THESE DRAWINGS OR DOCUMENTS  
DOES NOT CONSTITUTE PART PERFORMANCE OR  
ACCEPTANCE OF CONTRACT

CTD PART NO.	U.S. ECCN	DESCRIPTION
98-02588-00	EAR99	VECTOR 81/85/8600 TRAILER
98-02588-01	EAR99	VECTOR 81/85/86XX TRAILER WITH PRE-ASSEMBLED POWER CABLE
98-02588-02	EAR99	VECTOR 81/85/86XX TRAILER WITH LOOSE PARTS FOR POWER CABLE

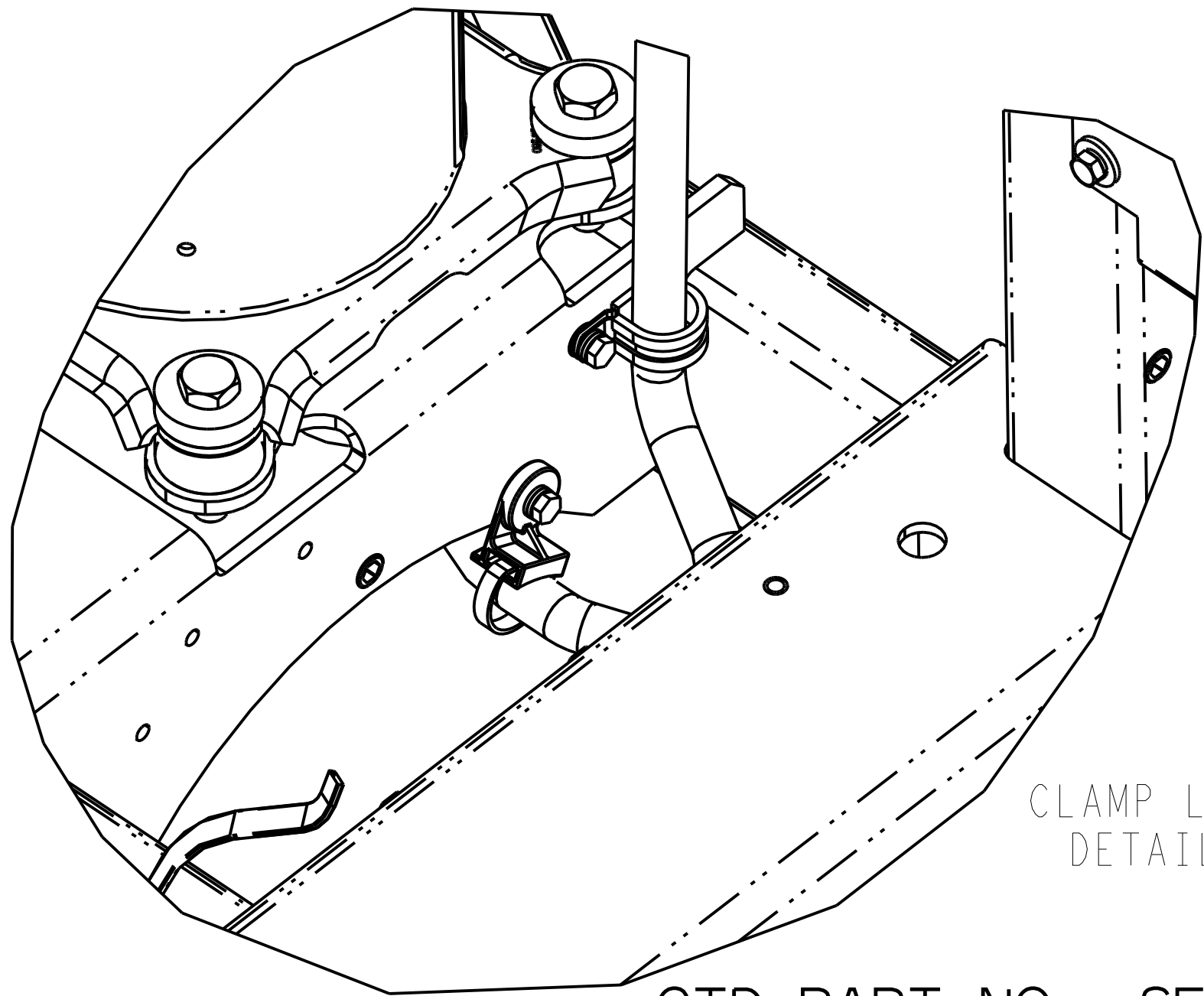
VOID



LOWER LEFT FRONT VIEW  
-00 (SHOWN), -01 & -02

INSTALLATION INSTRUCTIONS:

- 1.0 FOR -01 AND -02 ONLY, ASSEMBLE THE CHARGER-END OF THE POWER CABLE WITH THE TERMINALS, BOOT, AND FUSE HOLDER. SEE SHEET 3 FOR DETAILS.
- 2.0 ROUTE CABLE UP FROM BOTTOM OF UNIT TO THE LIFTGATE CHARGER PER DWG, ATTACHING CABLE TO FRAME USING CUSHION CLAMP IT. 40, WIRE TIE, IT. 85 AND WIRE TIE BASE, IT. 80 AT LOCATIONS SHOWN. DO NOT TIGHTEN WIRE TIE AT THIS TIME.
- 3.0 INSTALL FUSED, POSITIVE CONDUCTOR ONTO 'OUT +' TERMINAL. INSTALL BLACK CONDUCTOR ONTO 'OUT -' TERMINAL.
- 4.0 FOR -01 AND -02: IDENTIFY A SUITABLE LOCATION FOR THE 50A FUSE ON POSITIVE WIRE AS CLOSE TO THE AUXILIARY BATTERIES AS POSSIBLE, AND SECURE THE FUSE HOLDER IN A PROTECTED LOCATION THAT PREVENTS DAMAGE TO THE WIRE. INSTALL FUSES AFTER ALL WIRING IS COMPLETE.
- 5.0 TAKE ANY SLACK OUT OF CABLE AND TIGHTEN CLAMPS AND WIRE TIE TO SECURE THE CABLE IN THE UNIT. ROUTE CABLE TO LIFTGATE ASSEMBLY. FASTEN TO TRAILER USING CUSTOMER SUPPLIED HARDWARE.
- 6.0 WIRE TO LIFTGATE ACCORDING TO SUPPLIERS INSTALLATION INSTRUCTIONS.
- 7.0 USE ADDITIONAL FASTENERS TO SECURE WIRES FROM CHAFING AND SEPARATE LOW VOLTAGE AND HIGH VOLTAGE.

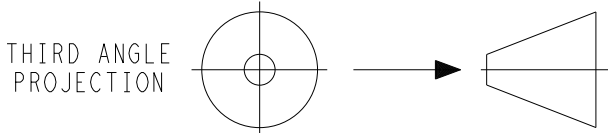


CLAMP LOCATION  
DETAIL VIEW

CTD PART NO.: SEE CHART  
SEE SEPARATE PARTS LIST

H	PICT'L UPDATED VIEWS. UPDATE SHEET INDEX. SEE SHEETS 3 & 4.	03 JAN 2023	LT-SK/ZMG	RC		ECN1162661
G	IN INSTALLATION INSTRUCTIONS: ADDED NOTE 1.0, REMOVED NOTE 2.0 THRU 4.0, RE-NUMBERED FROM 2.0 THRU 7.0, MOVED ITEM CALLOUT 80 AND 85 TO ITEM CALLOUT 45, 47 AND 67. UPDATED SHEET INDEX. UPDATED NOTES 3.0, 4.0 AND 7.0. SEE ALL SHEETS.	23 SEP 2021	LT-VB/ZMG	RC		ECN1145031
SYM	REVISION RECORD	DATE	BY	ENGR.	M.E.	NPCA NO.

SHEET INDEX	REV	H	G	H	H
	SHEET	1	2	3	4



IMPERIAL INCH FORMAT:  
UNLESS OTHERWISE SPECIFIED  
DIMENSIONS ARE IN INCHES WITH  
METRIC CONVERSIONS IN [MILLIMETERS]

TITLE  
INSTALL INSTRUCT, LIFT GATE

DRAWING NO.	REV
98-02588	H
SHEET 1 of 4	

WHITE  
CONDUCTOR (20) (30) (60) (10) 1(ONE) LIN. INCH  
COVER TERMINAL WITH DIELECTRIC  
GREASE AND THEN  
SLIDE BOOT OVER CONNECTION TO  
PROTECT IT.  
TORQUE 31.0±5 IN-LBS

(15) (35) (10) 1(ONE) LIN. INCH  
BLACK CONDUCTOR  
TORQUE 70.8±5 IN-LBS

REMOVE EXISTING HARDWARE FOR STD  
BATTERY CHARGER AT THIS LOCATION.  
REPLACE WITH:  
(40) (45) (47) (67)  
TORQUE 6.0 ±0.5 FT-LBS

WIRE/CLAMP LOCATION  
DETAIL VIEW

FRAME SHOWN  
TRANSPARENT  
FOR CLARITY

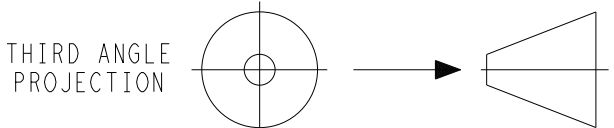
TORQUE 6.0 ±0.5 FT-LBS  
(40) (45) (47) (67)

(40) (45) (47) (67)  
TORQUE 6.0 ±0.5 FT-LBS

BOTTOM PANEL  
WITH CABLE PASS THRU  
DETAIL VIEW

BOTTOM PANEL - REF

G	ADDED NOTE "VOID".	23 SEP 2021	LT-VB/ZMG	RC		ECN1145031
E	ADDED NOTE: "-00 ONLY".	13 OCT 2020	LT-SK	RC		ECN1131313
D	REMOVED IT. 90 CALLOUT AND NOTE	6/15/16	PJS			72N0020P18
C	PIC'T REPLACED IT.30 & IT.35.	24 SEP 2015	LT-SS	JD		72N0338P15
B	REVISED CABLE ROUTING/CLAMPING ARRANGEMENT.	09-MAR-2015	TSV			72N0051P14
A	ADDED IT BALLOON #12, IT #60 WAS 360, IT #20 WAS 15.	04MAR2013	FM			72N0037P13
SYM	REVISION RECORD	DATE	BY	ENGR.	M.E.	NPCA NO.



IMPERIAL INCH FORMAT:  
UNLESS OTHERWISE SPECIFIED  
DIMENSIONS ARE IN INCHES WITH  
METRIC CONVERSIONS IN [MILLIMETERS]

TITLE  
INSTALL INSTRUCT, LIFT GATE

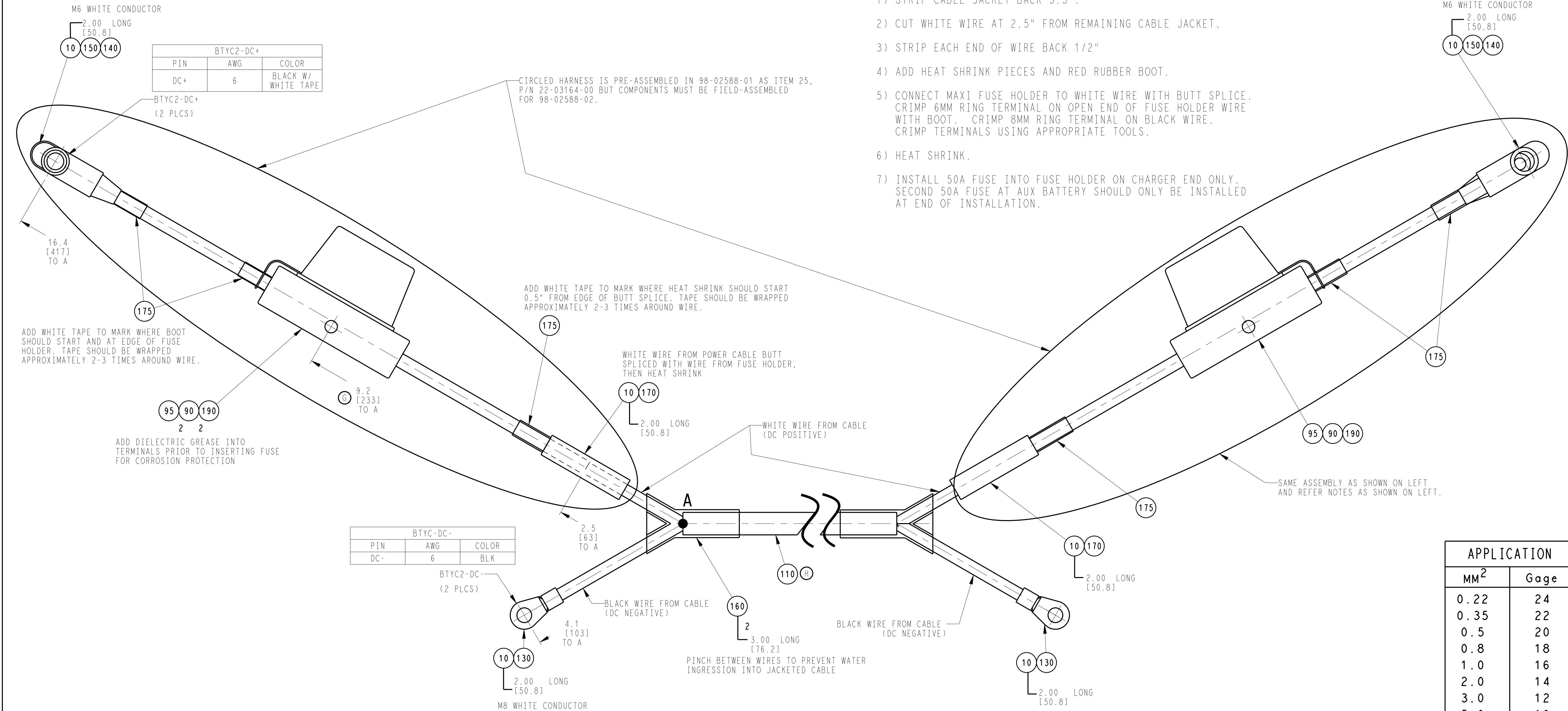
DRAWING NO.  
98-02588

REV  
6

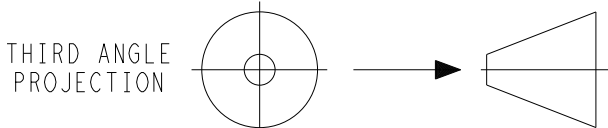
ASSEMBLE COMPONENTS AS SHOWN TO FUSE AND TERMINATE CHARGER  
END OF THE POWER CABLE. APPLY SIMILAR DESIGN TO AUX BATTERY END  
OF POWER CABLE, ADJUSTING WIRE LENGTHS AND TERMINALS AS REQUIRED.

INSTRUCTION TO ASSEMBLE BATTERY CHARGER TERMINATIONS AND FUSE:

- 1) STRIP CABLE JACKET BACK 3.5".
- 2) CUT WHITE WIRE AT 2.5" FROM REMAINING CABLE JACKET.
- 3) STRIP EACH END OF WIRE BACK 1/2"
- 4) ADD HEAT SHRINK PIECES AND RED RUBBER BOOT.
- 5) CONNECT MAXI FUSE HOLDER TO WHITE WIRE WITH BUTT SPLICE.  
CRIMP 6MM RING TERMINAL ON OPEN END OF FUSE HOLDER WIRE  
WITH BOOT. CRIMP 8MM RING TERMINAL ON BLACK WIRE.  
CRIMP TERMINALS USING APPROPRIATE TOOLS.
- 6) HEAT SHRINK.
- 7) INSTALL 50A FUSE INTO FUSE HOLDER ON CHARGER END ONLY.  
SECOND 50A FUSE AT AUX BATTERY SHOULD ONLY BE INSTALLED  
AT END OF INSTALLATION.



H	REPLACED IT. 110.	03 JAN 2023	LT-SK/ZMG	RC		ECN1162661
G	REDRAWN THE HARNESS ROUTING AND ADDED ITEM BALLOONS AND NOTES; UPDATED ITEM 10, 2.00 LONG WAS 1.00 LONG IN (RING TERMINALS) 2 PLACES, IN BTYC-DC- TABLE "AWG 6" WAS "WIRE SIZE 16", IN BTYC2-DC+ TABLE "AWG 6" WAS "WIRE SIZE 16" AND COLOR "BLACK W/ WHITE TAPE" WAS "WHT", UPDATED DIM. 4.1 WAS 14.5, REMOVED DIM. 3.0, UPDATED DIM. 16.4 WAS 14.5, REMOVED ITEM 10 AND 100 IN (FUSE) 2 PLACES, REMOVED ITEM 120 (2 PLACES) AND ITS DIM. 9.0 AND 10.0, ADDED ITEM 160, 175 AND 200 WITH NOTES; ADDED DIM. 2.5 AND 9.2, ADDED ITEM 10 AND 170 WITH NOTES, ADDED "ASSEMBLE COMPONENTS..." AND "INSTRUCTIONS TO ASSEMBLE..." NOTE; REPLACED ITEM 90 AND 95. ADDED "CIRCLED HARNESS...AND BLACK WIRE..." NOTE.	23 SEP 2021	LT-VB/ZMG	RC		ECN1145031
F	IN LEGEND NOTE: REMOVED "WIRE TERMINATION LABEL".	23 OCT 2020	LT-SK	RC		ECN1137686
E	ADDED THIS SHEET.	13 OCT 2020	LT-SK	RC		ECN1131313
SYM	REVISION RECORD	DATE	BY	ENGR.	M.E.	NPCA NO.



IMPERIAL INCH FORMAT:  
UNLESS OTHERWISE SPECIFIED  
DIMENSIONS ARE IN INCHES WITH  
METRIC CONVERSIONS IN [MILLIMETERS]

TITLE  
INSTALL INSTRUCT, LIFT GATE

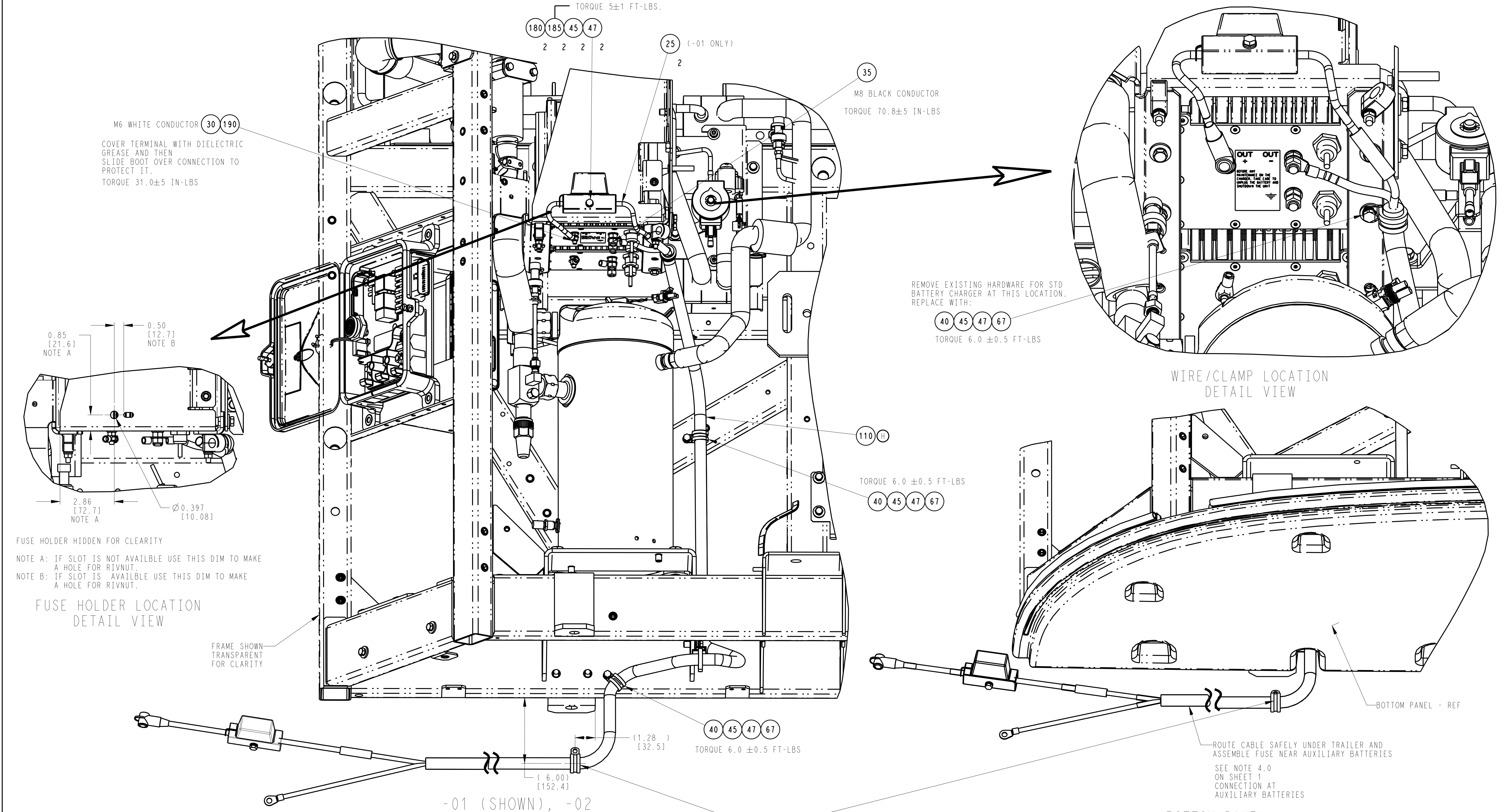
DRAWING NO.  
98-02588  
SHEET 3 of 4

REV  
H

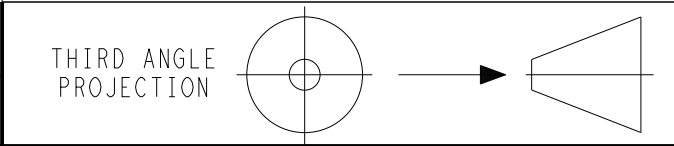
APPLICATION	
mm <sup>2</sup>	Gage
0.22	24
0.35	22
0.5	20
0.8	18
1.0	16
2.0	14
3.0	12
5.0	10
6.5	9
8.0	8
10.5	7
15.0	6
21.0	4

LEGEND:  
● DATUM





H	REPLACED IT. 110. PICT'L UPDATED VIEWS.	03 JAN 2023	LT-SK/ZMG	RC		ECN1162661
G	REDRAWN THE HARNESS ROUTING AND ADDED THE ITEM BALLOONS AND NOTES. ADDED VIEW "FUSE HOLDER LOCATION DETAIL VIEW" WITH DIMENSIONS AND NOTES. REMOVED ITEM 50. ADDED 2 QTY FOR ITEM 25. REMOVED NOTE ON ITEM 110. REMOVED ITEM BALLOONS 10, 90, 95, 100, 120, 130, 140 AND 150 IN "WIRE/CLAMP LOCATION..." AND "BOTTOM PANEL..." DETAIL VIEWS ADDED NOTE ROUTE CABLE SAFELY.....; UPDATED AND MOVED SEE NOTE 4.0.... ADDED IT. 190 ON IT. 30 BALLOON.	23 SEP 2021	LT-VB/ZMG	RC		ECN1145031
SYM	REVISION RECORD	DATE	BY	ENGR.	M.E.	NPCA NO.



IMPERIAL INCH FORMAT:  
UNLESS OTHERWISE SPECIFIED  
DIMENSIONS ARE IN INCHES WITH  
METRIC CONVERSIONS IN [MILLIMETERS]

TITLE  
INSTALL INSTRUCT, LIFT GATE

DRAWING NO.  
98-02588  
SHEET 4 of 4  
REV  
H