



Counter Line 2022/23





About Carrier

Founded by the inventor of modern air conditioning, Carrier is the world's leader in high-technology heating, air conditioning and refrigeration solutions. Carrier experts provide sustainable solutions, integrating energy-efficient products, building controls and energy services for residential, commercial, retail, transport and food service customers.

With more than a century of expertise, we drive innovation while putting our customers first, helping protect our planet, and inspiring and empowering our people.



\$ 17.5B

2020
NET sales



~ 8.000

Active patents
and pending patent
applications worldwide



160+

countries



56,000

employees



80+

brands



100+

new products
for the 6th
consecutive year

Delivering confidence

through innovative & sustainable refrigeration solutions

Carrier Commercial Refrigeration is a part of Carrier Global Corporation and a leading supplier of innovative, sustainable and intelligent cold chain solutions in the food retail and cold storage industries.

Remote and plug-in cabinets. Chillers and freezers. Systems and controls. Carrier provides the design, installation, service and support you need to enjoy optimum performance – from day one through the entire life-cycle.

We deliver a comprehensive range of solutions to keep goods cool, energy costs low and environmental footprint to a minimum. Delivering confidence.



9.000+

connected stores



22.000+

sites maintained



700+

top trained
technicians



50K+

Carrier Refrigeration
products in stores
and warehouses



For further information and contacts visit our website:
www.carrier-refrigeration.com



REMOTE
CABINETS



COUNTERS



PLUG-IN
CABINETS



MECHANICAL
SYSTEMS



SERVICES



Check our complete
range of solutions.

Content

About Carrier	2
Delivering confidence	3
Portfolio overview	6
Carucco range	9

Carucco Range 10

Straight Line	13
Danaos®	15
Danaos® Invite	16
Danaos® TT & TT Rounded Corner	18
Danaos® Convertible Counter	20

Curved Line	25
Hera®	26
Apollo	28
Cabrio	30

Semi-vertical	35
Medea®	36

External aesthetics & accessories 39

Straight Line / Curved Line	42
Semi-vertical Medea®	52

Counter – Special Solutions 61

Marché Fresh	62
Glycos	64

Technical Information 67

The EcoDesign regulation	68
Excellence in tests and qualification of cabinets	70

NOTE:

- Module lengths are without side walls. Sidewall thickness 50mm, each.
- Cabinet depth is always inside depth.
- Cabinet length: exact length (mm): 625 / 937,5 / 1250 / 1875 / 2500 / 3750.
- The pictures shown in the catalog are not, in all cases, ex-works solutions.

Application



Soft drinks



Dairy products



Hot meals



Cheese



Meat



Minced meat



Cold cuts



Sandwiches



Fish



Delicatessen



Pastry



Prepacked cheese



Prepacked meat



Prepacked minced meat



Prepacked cold cuts



Prepacked sandwiches



Prepacked fish



Prepacked delicatessen



Prepacked pastry



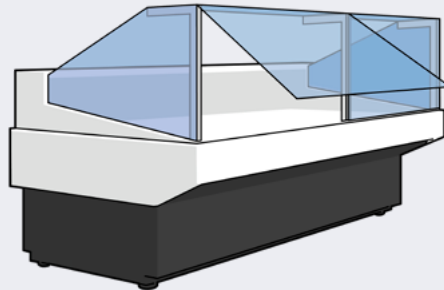


Portfolio overview

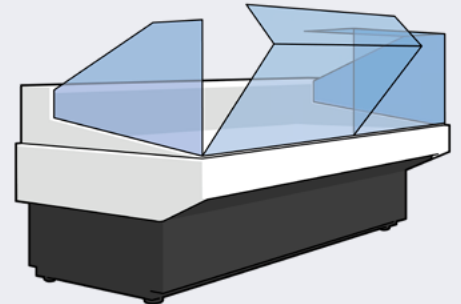
■ Caruccio range ■ Special Solutions

Horizontal Range

Straight Line

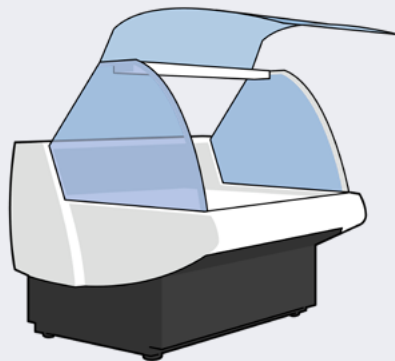


Danaos®

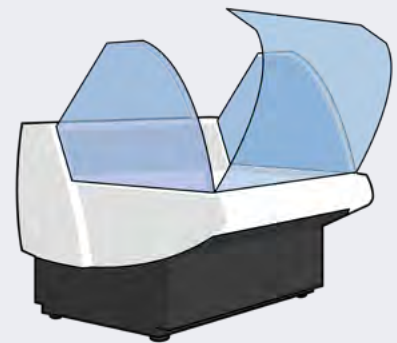


Danaos® Total Transparency

Curved Line



Apollo

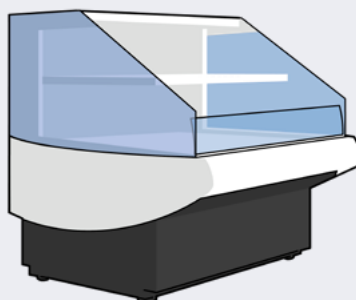


Hera®

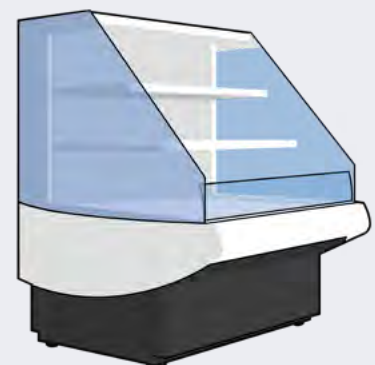
Semi-vertical

Semi-vertical cabinets

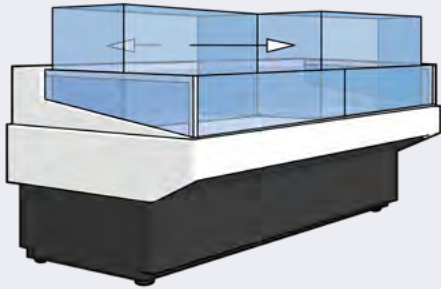
GEN 2



Medea® SD



Medea® ST



Danaos® Convertible Counter

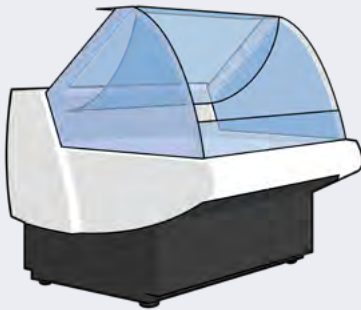
Counter variants



Danaos® "HOT"



Danaos® Invite



Cabrio

Counter variants



Apollo HOT "Curved"

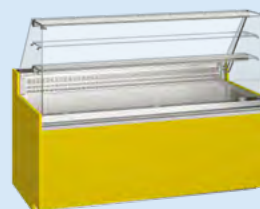


Medea® SQ

Counter - Special Solutions



Marché Fresh



Glycos

RAIS EMBALLÉ

À CHAQUE NOUVEAU MORCEAU
UN NOUVEAU PLAISIR



- 1 Caillet
- 2 Basse côte
- 3 Paleron
- 4 Jambon
- 5 Macreuse
- 6 Macreuse à bifteck
- 7 Jambon
- 8 Paleron
- 9 Plat de côte
- 10 Entrecôte ou Côte
- 11 Faux-filet
- 12 Filet
- 13 Bœuf
- 14 Panchet
- 15 Ruminet
- 16 Tranche de tranche
- 17 Tranche grasse
- 18 Os de bœuf

Intermarché

LE PORC UNE PAILLETTE DE MOUTON
POUR LE MARCHÉ À LA CARTE



- 1 Tête
- 2 Pâté
- 3 Cuisse d'arrière
- 4 Cuisse
- 5 Tête
- 6 Cuisse
- 7 Pâté
- 8 Filet d'arrière
- 9 Pâté
- 10 Pâté
- 11 Jambon
- 12 Jambon
- 13 Queue

Intermarché

En ce moment

Vente de Bœuf
Origine
LIMOUSINE

Bien choisir
ses portions
par repas.

	100 g	200 g	300 g à 250 g	400 g
100 g	100 g	200 g	300 g à 250 g	400 g
200 g	200 g	400 g	600 g à 500 g	800 g
300 g	300 g	600 g	900 g à 750 g	1200 g
400 g	400 g	800 g	1200 g à 1000 g	1600 g

Entaille sous vide

Pour préserver
la fraîcheur
de la viande
après cuisson





PRODUCTEURS
COMMERCE
Fiers
DE NOS PARTENARIATS
AVEC DES ÉLEVÉS FRANÇAIS

Carrucco range

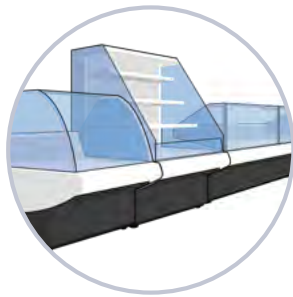
Carucco range

Carucco Range

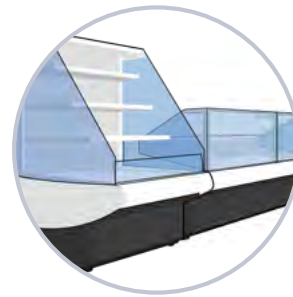
Timeless beauties: Carucco range with unlimited combination & design options

- The Carucco program is an element program, which boasts numerous combination and design options. The cabinet base remains the same and with diverse glass superstructures: straight, curved or semi-vertical.
- Whether serve-over or self-service variants, corner elements, crown ends or special application cabinets – counters from the same line can easily be combined – the variations are infinite.
- With different cabinet heights, depths or applications, we give you the freedom to choose the solution that best suits your taste and requirements.
- Different color possibilities and cladding variants give an individual look.
- Plenty of options and accessories complete the range of individualization of the application and can be found at the end of the overview.

Individual products sharing common models and technology

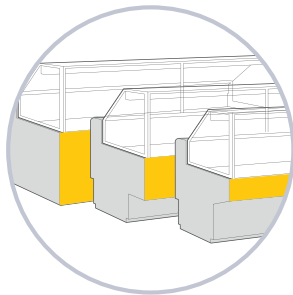


Extended product range

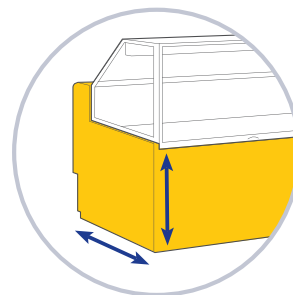


Multiplexible

(Counters & Semi-verticals)

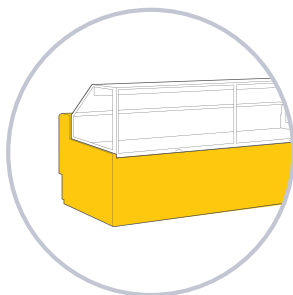


Customizing options



Flexibility

(Different depths & loading heights)



Common aesthetic

(Across all product models)



Straight Line



Curved Line



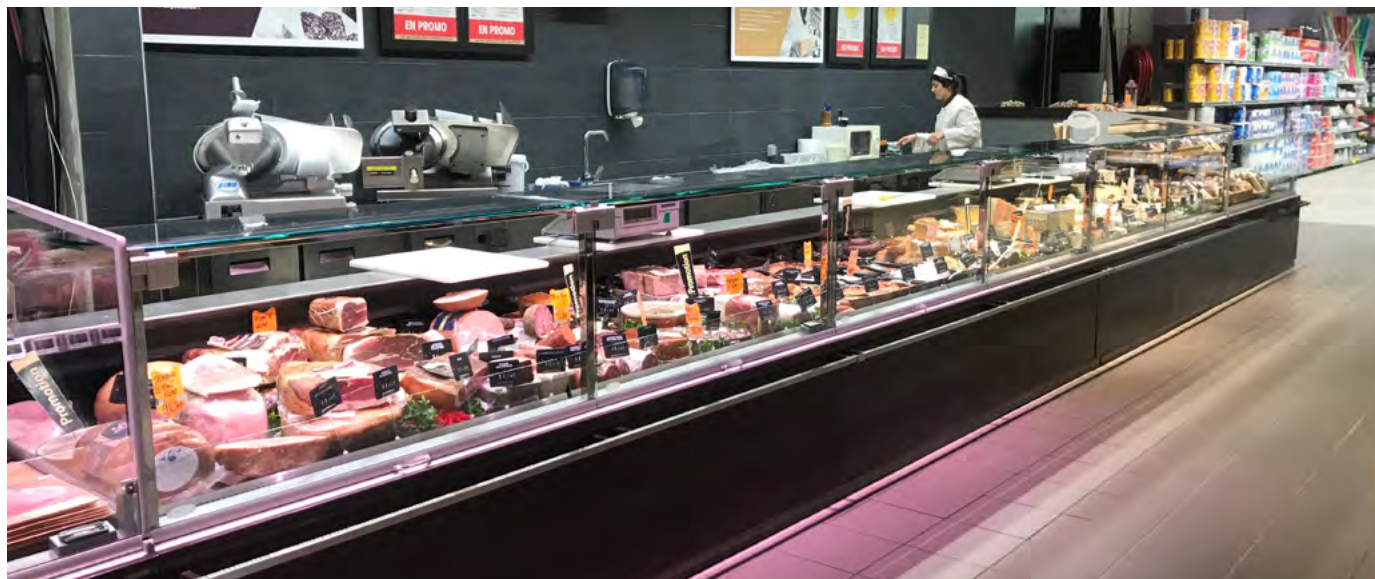
Semi-vertical





Straight Line

Danaos® is based on the straight line Danaos®



Benefits at a glance

- Attractive flat glass design
- Flexibility with secondary product placement
- Remote and plug-in versions for maximum adaptability
- High-quality, easy-to-clean materials



Standard configuration

- Fan-assisted air circulation
- 3 display decks (mm): 750, 850, 900
- 2 base heights (mm): 600, 700
- Superstructure B version: top canopy 400 mm
- Top-hinged lift-up front glass
- Horizontal or inclined display deck
- Evaporators protected with cataphoresis

Options

- Product dividers
- Pricing rail
- Cutting board, knife sheath, scale / slicer platform
- Terminal rail for third party controller
- LED lighting
- Variety of RAL colors available

Application



Dairy products



Cheese



Meat



Minced meat



Cold cuts



Delicatessen



Hot meals



Prepacked
cheese



Prepacked
meat



Prepacked
minced meat



Prepacked
cold cuts

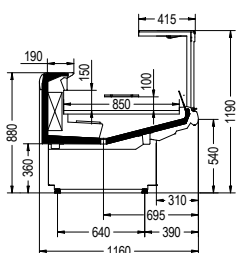


Prepacked
delicatessen

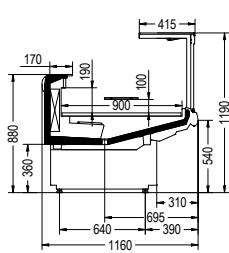


Prepacked
fish

Basic Models



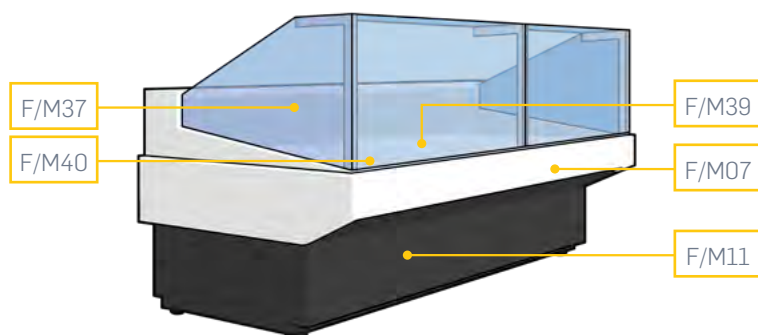
Danaos®. 85H



Danaos®. 90H

Danaos®	S	250	90H	B
Cabinet name				
Name suffix (if indicated)				
Module length /type				
Display deck depth				
Display deck height				
Revision index				

Customization



Models available



- Remote / Plug-In
- Serve-Over / Self-Service
- Internal & external corners

An overview of all available models / cross sections can be found on page 22

Customization	
F/M07	DECOR FRONT PANEL
F/M11	PLINTH PANEL
F/M37	AIR BAFFLE PLATE
F/M39	BOTTOM DECK
F/M40	RETURN AIR GRILLE

For more information on design, consult our COUNTER AESTHETICS CATALOGUE for an overview of materials, colors and decorative versions available.

Technical data

	Modules						Corners**				Energy label
Danaos®	63	94	125	188	250	375	EC45	EC90	IC45	IC90	
Standard cabinets in all following tables											
	Total display area (m²)										
Danaos®, 75H	-	-	0.94	1.40	1.89	2.83	-	-	-	-	<div>A F</div>
Danaos® X 75H	-	-	0.94	-	-	-	-	-	-	-	<div>A E</div>
Danaos®, 85H	0.51	0.78	1.05	1.57	2.12	3.18	0.98	1.6	1.09	2.18	<div>A E</div>
Danaos®, 90H	0.50	0.77	1.03	1.55	2.08	3.12	10.4	1.7	1.16	2.32	<div>A F</div>
Danaos® X 90H	-	0.77	1.13	-	-	-	-	-	-	-	<div>A E</div>
Temperature range* (°C)	3M1 (-1 /+1)										
Special application**											
Danaos®, 85H BW 	-	-	0.71	-	-	-	-	-	-	-	
Danaos®, 85H GW 	-	-	0.71	-	-	-	-	-	-	-	
Temperature range* (°C)	BW/GW 30 - 90°										

BW Hot counter, bain-marie with hot lamp

GW Hot counter, heated plate with hot lamp

Version B: 400mm top canopy

* These temperature ranges are shown in general for the refrigerated cabinets. Loading height limitation for -1/+1 °C: 100 mm. Please refer to the technical manual to match the right temperature to the different versions.

** These cabinets are not within the scope of "Commission Delegated Regulation (EU) 2019/2018 supplementing Regulation (EU) 2017/1369" with regard to energy labeling of refrigerating appliances with a direct sales function.

Danaos® Invite

The eye-catcher in your straight line counter range



Benefits at a glance

- Straight Lines
- Window opening at the front
- Eye-catching food presentation with swivel plate functionality
- Creates a stand-out highlight in your counter line
- Variability of use for all product groups
- Easily combinable with Danaos® straight units
- Modern look with large glass surfaces and stainless steel front
- Easy cleaning thanks to the tiltable top canopy glass and removable swivel plate

Standard configuration

- Semicircular design presentation
- Swivel plate manually rotatable
- Fan-assisted air circulation
- One length (mm): 1250
- Tilttable top canopy
- Stainless steel bumper
- Front pedestal in stainless steel
- Internal equipment in stainless steel

Options

- Display shelves
- Swivel plate in different materials and colors
- Fish tray
- Tray set for swivel plate (17 pieces)
- Additional tray set for lateral positioning (8 pieces)
- Cutting board, knife sheath, scale/slicer platform
- External cladding options in wood or similar material
- Variety of RAL colors available

Application



Cheese



Sandwiches



Cold cuts

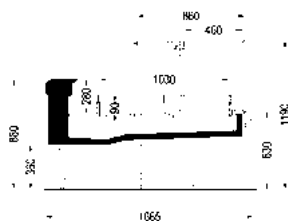


Meat

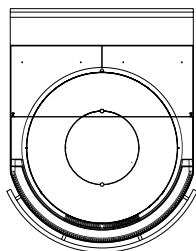


Fish

Basic Models



Danaos® Invite



Danaos® Invite – Top view

Cabinet name	Invite	125	A
Module length / type			
index / suffix			

Customization

- Danaos® Invite can be multiplexed with Danaos®

For more information on design, consult our **COUNTER AESTHETICS CATALOGUE** for an overview of materials, colors and decorative versions available.

Models available

- Remote
- Serve-Over

An overview of all available models / cross sections can be found on page 22



Technical data

	Modules							
Danaos® Invite**	63	94	125	156	188	250	312	375
	Total display area (m²)							
Danaos® Invite	-	-	1.31	-	-	-	-	-
Temperature range* (°C)	3M1 (-1/+1)							

* These temperature ranges are shown in general for the refrigerated cabinets. Loading height limitation for -1/+1 °C: 100 mm. Please refer to the technical manual to match the right temperature to the different versions.

** These cabinets are not within the scope of "Commission Delegated Regulation (EU) 2019/1369" with regard to energy labeling of refrigerating appliances with a direct sales function.

Danaos® TT & TT Rounded Corner

Transparency is the key, thanks to seamless pillars



Benefits at a glance

- Attractive full-glass design
- Full transparency
- Excellent product visibility with an eye-catching effect
- Remote and plug-in version for maximum adaptability
- High quality, easy-to-clean materials



Benefits at a glance

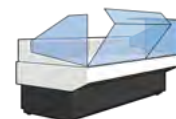
- Exclusive product appearance with an eye-catching effect
- Trendy, stylish design
- Perfectly rounded shapes
- Easily multiplexible with Danaos® Total Transparency
- Straight units

Standard configuration

- Fan-assisted air circulation*
- 2 display decks (mm): 850, 900*
- 1 base height (mm): 600*
- 4 lengths (mm): 1250, 1875, 2500, 3750
- Full-glass straight superstructure with bottom-hinged tilt-down glass*, top canopy 270 mm
- Horizontal or inclined display deck
- Evaporators protected with cataphoresis*

Options

- Different aesthetics (Standard / Total Inox / Flat / Wood)*
- Product dividers*
- Pricing rail
- Cutting board, knife sheath, scale / slicer platform*
- Terminal rail for third party controller*
- Variety of RAL colors available*



Bottom hinged
tilt down front glass

Application



Dairy products



Cheese



Meat



Minced meat



Cold cuts



Delicatessen



Prepacked
cheese



Prepacked
meat



Prepacked
minced meat



Prepacked
cold cuts



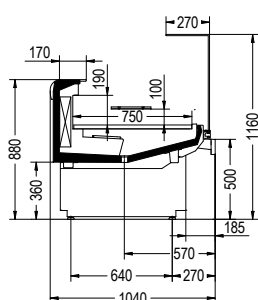
Prepacked
delicatessen



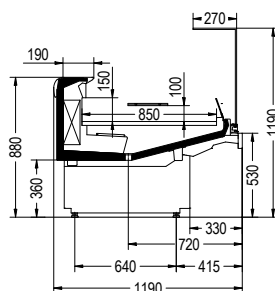
Prepacked
fish

*Rounded corner ** External corners 45/90°

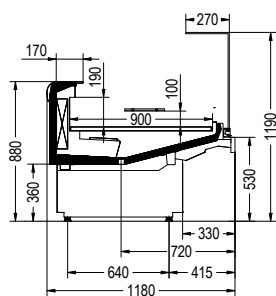
Basic Models



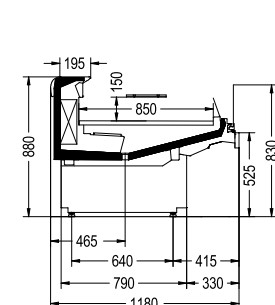
Danaos®. 75H TT



Danaos®. 85H TT



Danaos®. 90H TT / 90H TT RC



Danaos®. 85 H TT self-service

Danaos® S 250 90H TT A

Module name

Name suffix (if indicated)

Module length /type

Display deck depth

Display deck height

Total Transparency (Rounded Corner)

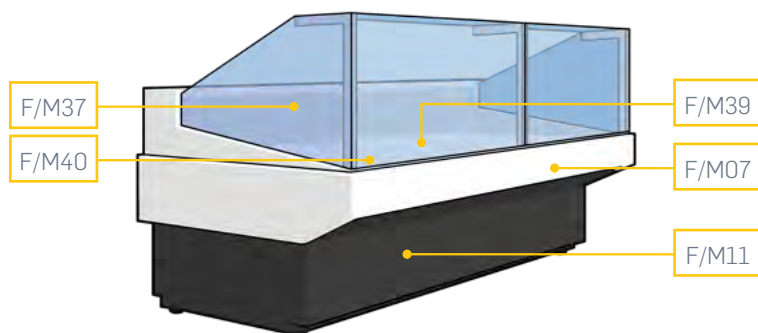
Revision index

Models available

- Remote / Plug-In
- Serve-Over / Self-Service
- Internal & external corners

An overview of all available models / cross sections can be found on page 18

Customization



Customization

F/M07	DECOR FRONT PANEL
F/M11	PLINTH PANEL
F/M37	AIR BAFFLE PLATE
F/M39	BOTTOM DECK
F/M40	RETURN AIR GRILLE

For more information on design, consult our COUNTER AESTHETICS CATALOGUE for an overview of materials, colors and decorative versions available.

Technical data

Danaos® TT & TT RC	Modules						Corners**		Energy label
	63	94	125	188	250	375	EC45	EC90	
	Total display area (m²)								
Danaos®. 75H TT	-	-	0.93	1.40	1.87	2.81	-	-	A F
Danaos®. X 75H TT	-	-	0.93	-	-	-	-	-	A E
Danaos®. 85H TT	-	-	1.08	1.63	2.17	3.26	-	-	A E
Danaos®. 90H TT	-	-	1.09	1.64	2.18	3.27	-	-	A E
Danaos®. X 90H TT	-	0.82	1.09	-	-	-	-	-	A E
Danaos®. 85H TT RC	-	-	-	-	-	-	1.08	2.16	
Danaos®. 90H TT RC	-	-	-	-	-	-	1.14	2.28	
Temperature range* (°C)	3M1 (-1 /+1)								

* These temperature ranges are shown in general for the refrigerated cabinets. Loading height limitation for -1 /+1 °C: 100 mm. Please refer to the technical manual to match the right temperature to the different versions.

** These cabinets are not within the scope of "Commission Delegated Regulation (EU) 2019/2018 supplementing Regulation (EU) 2017/1369" with regard to energy labeling of refrigerating appliances with a direct sales function.

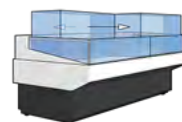
Danaos® Convertible Counter

Stylish & straight design for flexible and multifunctional use



Benefits at a glance

- Easily convertible from serve-over to self-service
- Highly transparent w/o columns / hinges
- Flexibility to meet a variety of store applications
- Exclusive appearance with modern and trendy flat glass design
- Remote and plug-in version for maximum adaptability
- High quality, easy-to-clean materials



Standard configuration

- Fan-assisted air circulation
- 1 display deck (mm): 780
- 1 base height (mm): 600
- 4 lengths (mm): 1250, 1880, 2500, 3750
- Convertible glass superstructure
- Horizontal or inclined display deck
- Evaporators protected with cataphoresis

Options

- Different aesthetics (CB / Total Inox / Flat / Wood)
- Product dividers
- Cutting board, knife sheath, scale/slicer platform
- Terminal rail for third party controller
- Variety of RAL colors available

Application



Dairy products



Cheese



Meat



Minced meat



Cold cuts



Prepacked cheese



Prepacked meat

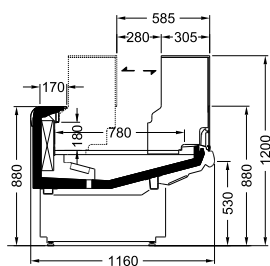


Prepacked minced meat



Prepacked cold cuts

Basic Models



Danaos®, CC 00H C

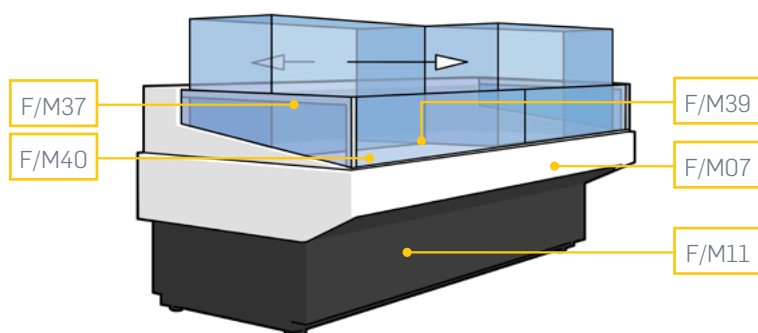
Danaos®	CC	188	00H	C
Cabinet name				
Name suffix (if indicated)				
Module length /type				
Display deck depth				
Display deck height				
Revision index				

Models available

- Remote
- Serve-Over / Self-Service

An overview of all available models / cross sections can be found on page 22

Customization



Customization	
F/M07	DECOR FRONT PANEL
F/M11	PLINTH PANEL
F/M37	AIR BAFFLE PLATE
F/M39	BOTTOM DECK
F/M40	RETURN AIR GRILLE

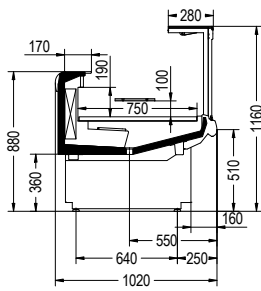
For more information on design, consult our COUNTER AESTHETICS CATALOGUE for an overview of materials, colors and decorative versions available.

Technical data

	Modules						Energy label
Danaos® Convertible Counter	63	94	125	188	250	375	
	Total display area (m²)						
Danaos®. CC 00H	-	-	1.09	1.64	2.18	3.17	<div><div>A</div><div>B</div><div>G</div></div>
Temperature range* (°C)	3M2 (0 /+2)						

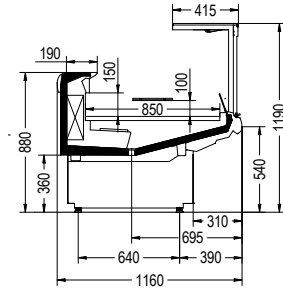
00 Natural cooling

* These temperature ranges are shown in general for the refrigerated cabinets. Loading height limitation for -1 /+1 °C: 100mm. Please refer to the technical manual to match the right temperature to the different versions.

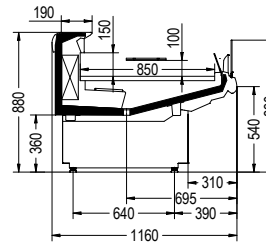


Danaos®. 75H **F**

Danaos®. X 75H **E**



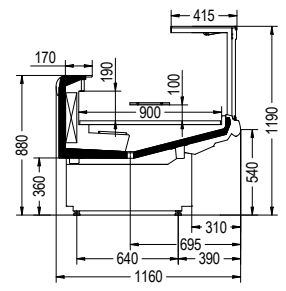
Danaos®. 85H **E**



Danaos®. S 85H **F**



Self service



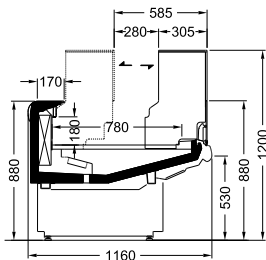
Danaos®. 90H **F**

Danaos®. X 90H **E**

Danaos® Convertible Counter

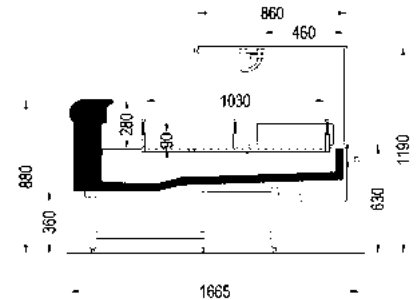


Self service & Serve-over



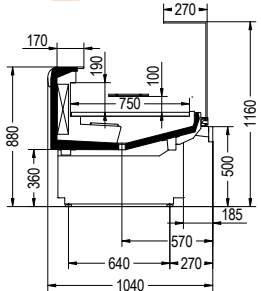
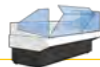
Danaos®. CC 00H C **G**

Special cabinets*



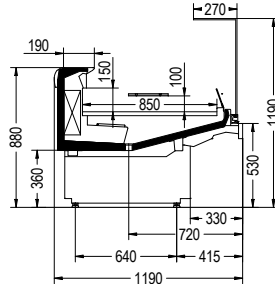
Danaos® Invite

Danaos® Total Transparency

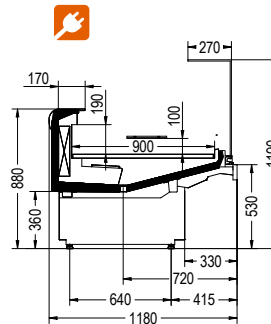


Danaos®. 75H TT **F**

Danaos®. X 75H TT **E**



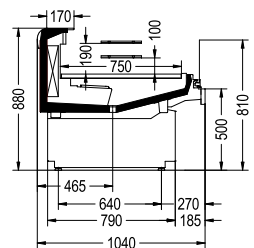
Danaos®. 85H TT **E**



Danaos®. 90H TT **E**

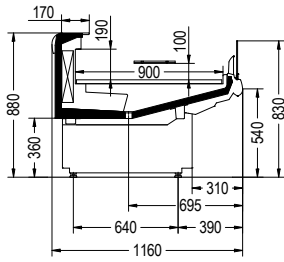
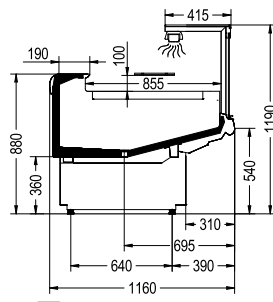
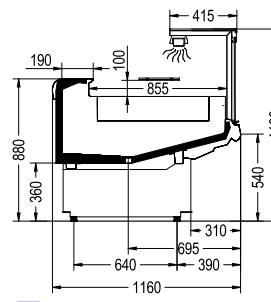
Danaos®. X 90H TT **E**

Self service



Danaos®. S 75H TT **G**

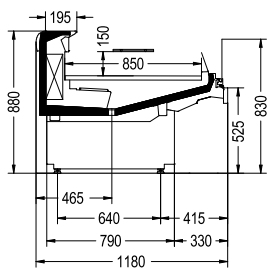
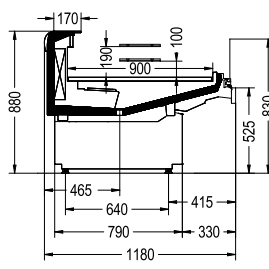
Self service

Danaos®. S 90H **G** Danaos®. 85H GW B Danaos®. 85H BW B

Danaos® X 375 90H _ A

Module nameAccording to the
superstructure type**Name suffix**S Self-service single display deck
X Plug-in cabinet**Module length**Length in cm For straight cabinets
EC45, EC90 For external corners
IC45, IC90 For internal corners
CE For crown end case**Display deck depth**75 Extra small 750 mm 00 Display deck depth
85 Medium 850 mm is not a differentiating
90 Large 900 mm factor for the cabinet
95 Extra large 950 mm definition**Display deck height**E Extra 700mm M Medium 540mm
H High 600mm L Low 400mm**Supplementary details**BW Hot with bain-marie and warming lamp
GW Hot plate with warming lamp
NR Not refrigerated
No suffix for ventilated NT cabinet**Supplementary index**

Identifies major revisions: A, B, C ...

Danaos®. S 85H TT **F**Danaos®. S 90H TT **G**

All energy labels presented for best energy configuration.

** These cabinets are not within the scope of "Commission
Delegated Regulation (EU) 2019/2018 supplementing
Regulation (EU) 2017/1369" with regard to energy labeling of
refrigerating appliances with a direct sales function.Please note the Danaos® and the Danaos® TT
versions cannot be directly connected (multiplexed).





Curved Line

Curved lines for high merchandise visibility



Benefits at a glance

- Curved lines & glasses
- High transparency
- Bottom hinged tilt down glass
- Panoramic full-glass view of products on display
- Various display depths for optimized merchandise placement
- Optimized temperature performance
- High-quality, easy-to-clean materials



Standard configuration

- Fan-assisted air circulation
- 3 display decks (mm): 750, 850, 900
- 2 base heights (mm): 540, 600
- Tilt-down front glass
- Horizontal or inclined display deck

Options

- Product dividers
- Pricing rail
- Cutting board, knife sheath, scale / slicer platform
- Wide range of cladding options
- Terminal rail for third party controller

Application



Dairy products



Cheese



Meat



Minced meat



Cold cuts



Sandwiches



Prepacked
cheese



Prepacked
meat



Prepacked
minced meat



Prepacked
cold cuts

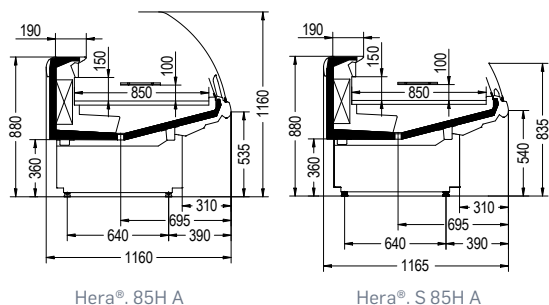


Prepacked
sandwiches



Prepacked
fish

Basic Models



	Hera®	S	250	90H	A
Cabinet name					
Name suffix (if indicated)					
Module length /type					
Display deck depth					
Display deck height					
Revision index					

Models available

- Remote / Plug-In
- Serve-Over / Self-Service
- Internal, external corners & crown end

An overview of all available models / cross sections can be found on page 28

Customization



Customization	
F/M07	DECOR FRONT PANEL
F/M11	PLINTH PANEL
F/M37	AIR BAFFLE PLATE
F/M39	BOTTOM DECK
F/M40	RETURN AIR GRILLE

For more information on design, consult our COUNTER AESTHETICS CATALOGUE for an overview of materials, colors and decorative versions available.

Technical data

	Modules						Corners**					Energy label
Hera®	63	94	125	188	250	375	EC45	EC90	IC45	IC90	CE***	
Standard cabinets in all following tables												
	Total display area (m²)											
Hera®, 85H A	0.54	0.81	1.08	1.63	2.17	3.26	0.98	1.60	1.09	2.18	1.92	
Hera®, 90H A	0.54	0.82	1.09	1.64	2.18	3.27	1.04	1.70	1.16	2.32	1.98	
Hera®, X 90H A	-	-	1.09	-	-	-	-	-	-	-	-	
Temperature range* (°C)	3M1 (-1 /+1)											

* These temperature ranges are shown in general for the refrigerated cabinets. Loading height limitation for -1/+1 °C: 100mm.

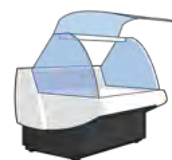
Please refer to the technical manual to match the right temperature to the different versions.

** These cabinets are not within the scope of "Commission Delegated Regulation (EU) 2019/2018 supplementing Regulation (EU) 2017/1369" with regard to energy labeling of refrigerating appliances with a direct sales function.

*** Crown end available as self-service version.

Apollo

Curved, flexible design for optimal versatility



Benefits at a glance

- Curved lines & glasses
- High transparency
- Top hinged tilt down glass
- Various display depths for optimized merchandise placement
- Secondary product placement
- Easy access to the products from the front and from the back
- Enhanced visibility with integrated lighting
- Optimized temperature performance
- High-quality, easy-to-clean materials

Standard configuration

- Fan-assisted air circulation
- 1 display deck (mm): 900
- 2 base heights (mm): 600, 540
- Top-hinged lift-up front glass
- Horizontal or inclined display deck

Options

- Product dividers
- Pricing rail
- Cutting board, knife sheath, scale / slicer platform
- Wide range of cladding options
- Terminal rail for third party controller
- LED lighting

Application



Dairy products



Cheese



Meat



Minced meat



Cold cuts



Delicatessen

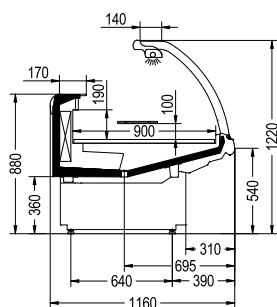


Pastry



Hot meals

Basic models



Apollo. 90H A

	Apollo	S	250	90H	A
Cabinet name					
Name suffix (if indicated)					
Module length/type					
Display deck depth					
Display deck height					
Revision index					

Models available

- Remote / Plug-In
- Serve-Over / Self-Service
- Internal, external corners & crown end

An overview of all available models / cross sections can be found on page 28

Customization



Customization	
F/M07	DECOR FRONT PANEL
F/M11	PLINTH PANEL
F/M37	AIR BAFFLE PLATE
F/M39	BOTTOM DECK
F/M40	RETURN AIR GRILLE

For more information on design, consult our COUNTER AESTHETICS CATALOGUE for an overview of materials, colors and decorative versions available.

Technical data

	Modules						Corners**					Energy label
Apollo	63	94	125	188	250	375	EC45	EC90	IC45	IC90	CE***	
Standard cabinets in all following tables												
	Total display area (m²)											
Apollo. 90H A	0.40	0.62	0.84	1.25	1.68	2.52	1.04	1.7	1.16	2.32	1.98	<div>A G</div> <div>F</div>
Apollo. X 90H A	-	0.62	0.84	-	-	-	-	-	-	-	-	<div>A A G</div> <div>F</div>
Temperature range* (°C)	3M1 (-1 /+1)											

Special application**											
Apollo. 90H BW A	-	0.50	0.71	-	-	-	-	-	-	-	-
Apollo. 90H GW A	-	0.50	0.78	-	-	-	-	-	-	-	-
Temperature range* (°C)	BW / GW 30 - 90°										

BW Hot counter, bain-marie with hot lamp

GW Hot counter, heated plate with hot lamp

* These temperature ranges are shown in general for the refrigerated cabinets. Loading height limitation for -1/+1 °C: 100mm.

Please refer to the technical manual to match the right temperature to the different versions.

** These cabinets are not within the scope of "Commission Delegated Regulation (EU) 2019/2018 supplementing Regulation (EU) 2017/1369" with regard to energy labeling of refrigerating appliances with a direct sales function.

*** Crown end available as self-service version.

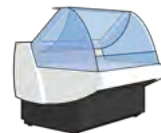
Cabrio

Curved shape with flexible merchandise for every market situation



Benefits at a glance

- Multi-functional design
- Easily convertible from self-service to serve-over
- Flexibility to meet the requirements of various store applications
- Plug-in version for easy relocation
- Ergonomic design for staff comfort and accessibility



Standard configuration

- Fan-assisted air circulation
- 1 display deck (mm): 850
- Fixed top canopy, back supports, equipped with serve-over and self-service front glasses
- Horizontal or inclined display deck

Options

- Pricing rail
- Cutting board, knife sheath, scale/slicer platform
- Wide range of cladding options
- Terminal rail for third party controller
- LED lighting

Application



Dairy products



Cheese



Meat



Minced meat



Cold cuts



Delicatessen



Prepacked
cheese



Prepacked
meat



Prepacked
minced meat

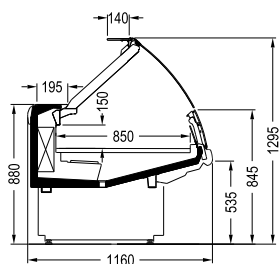


Prepacked
cold cuts



Prepacked
delicatessen

Basic models



Cabrio. 85H A

	Cabrio	X	250	90H	A
Cabinet name					
Name suffix (if indicated)					
Module length/type					
Display deck depth					
Display deck height					
Revision index					

Models available

- Remote
- Serve-Over / Self-Service

An overview of all available models / cross sections can be found on page 28


Customization



Customization	
F/M07	DECOR FRONT PANEL
F/M11	PLINTH PANEL
F/M37	AIR BAFFLE PLATE
F/M39	BOTTOM DECK
F/M40	RETURN AIR GRILLE

For more information on design, consult our COUNTER AESTHETICS CATALOGUE for an overview of materials, colors and decorative versions available.

Technical data

	Modules				Energy label
Cabrio	125	188	250	375	
	Total display area (m²)				
Cabrio. 85H A	0.83	1.24	1.67	-	AG 
Temperature range* (°C)	3M2 (0 /+2)				

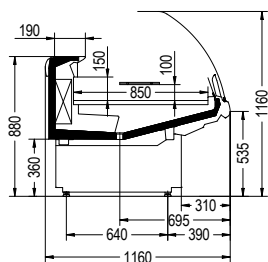
* These temperature ranges are shown in general for the refrigerated cabinets. Loading height limitation for -1/+1 °C: 100mm. Please refer to the technical manual to match the right temperature range to the different versions.



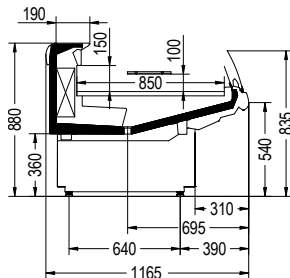
Self service



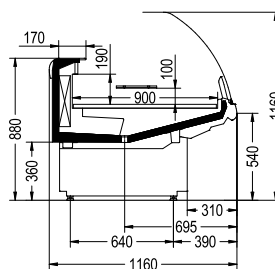
Self service



Hera®. 85H A **E**

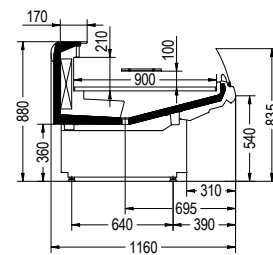


Hera®. S 85H A **F**



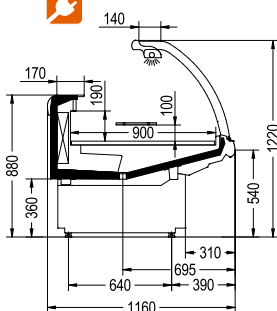
Hera®. 90H A **E**

Hera®. X 90H A **E**



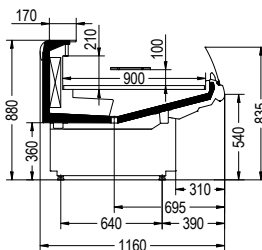
Hera®. S 90H A **G**

Apollo



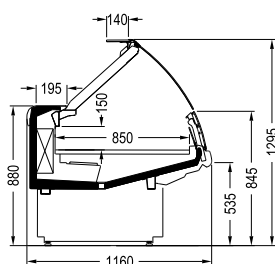
Apollo. 90H A **F**

Apollo. X 90H A **E**



Apollo. S 90H A **G**

Cabrio



Cabrio. 85H A **F**

Hera®	X	375	90H	_	A
-------	---	-----	-----	---	---

Module name
According to the
superstructure type

Name suffix
S Self-service single display deck
X Plug-in cabinet

Module length
Length in cm For straight cabinets
EC45, EC90 For external corners
IC45, IC90 For internal corners
CE For crown end case

Display deck depth
75 Extra small 750 mm 00 Display deck depth is
85 Medium 850 mm not a differentiating factor
90 Large 900 mm for the cabinet definition

Display deck height
E Extra 700 mm M Medium 540 mm
H High 600 mm L Low 400 mm

Supplementary details
BW Hot with bain-marie and warming lamp
GW Hot plate with warming lamp
NR Not refrigerated
No suffix for ventilated NT cabinet

Supplementary index
Identifies major revisions: A, B, C ...

* These cabinets are not within the scope of "Commission Delegated Regulation (EU) 2019/2018 supplementing Regulation (EU) 2017/1369" with regard to energy labeling of refrigerating appliances with a direct sales function.

All energy labels presented for best energy configuration.



Curved Line







Semi-vertical

Semi-vertical

Semi-vertical cabinets are the perfect choice for self-service presentation.
Products are presented in a vertical manner to perfectly catch the eye of the shopper



Benefits at a glance

- Stylish self-service counter for easy-to-grab food presentation
- Improved temperature performance and efficiency
- Enhanced loading capacity and high footprint utilization by up to four display levels
- Flexible in-store planning due to different modular lengths and heights
- Different designs tailored to every store's needs

Standard configuration

- Ventilated cabinet with powder coated finish
- 4 different lengths, 2 depths, 3 front heights and 3 cabinet heights, crown end and corners (depth 90)
- Refrigerated shelves with decline possibility (0° / -8° / -18°)
- Remote
- Plastic front as integrated bumper
- Closed base with painted panels
- Solar thermometer
- Glass demisting system (with fans)
- Evaporator with aluminum fins and cataphoresis protection
- R448/449a thermostatic valve

Options

- Canopy and shelf LED-lighting
- Manual night blind
- Rear panel in stainless steel
- Cabinet inside, internal parts and display shelves in stainless steel
- Different color options
- Plastic coated back cover panel
- Pedestals
- Cladding options

Application



Soft drinks



Dairy products



Prepacked fruits & vegetables



Prepacked cheese



Prepacked cold cuts

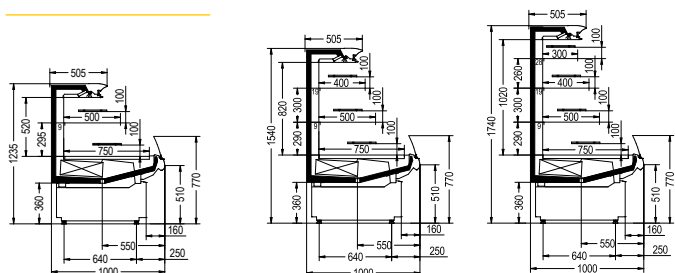


Prepacked sandwiches



Prepacked delicatessen

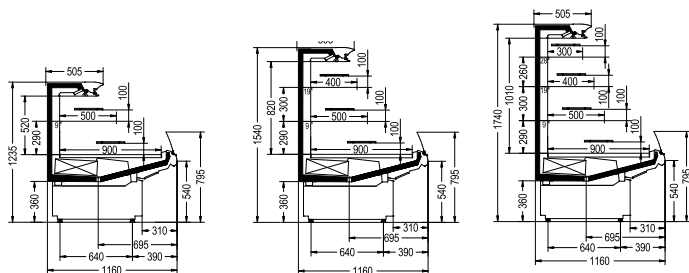
Basic models



Medea® 75H SD

Medea® 75H ST

Medea® 75H SQ



Medea® 90H SD

Medea® 90H ST

Medea® 90H SQ

Medea®	SD	375	90H	M2	1
Cabinet name					
Name suffix					
Module length /type					
Display deck depth					
Display deck height					
Temperature class					
Revision index					

Models available

- Remote
- Self-Service
- External corners & crown end

Customization



Customization	
F/M02	CANOPY PANEL
F/M07	DECOR FRONT PANEL
F/M11	PLINTH PANEL
F/M37	AIR BAFFLE PLATE
F/M38	DISPLAY SHELVES
F/M39	BOTTOM DECK
F/M40	RETURN AIR GRILLE
F/M58	PRICE RAIL F DISPLAY SHELF

For more information on design, consult our **COUNTER AESTHETICS CATALOGUE** for an overview of materials, colors and decorative versions available.

Technical data

Medea®	Modules				Corners					Energy label
	125	188	250	375	EC45	EC90	IC45	IC90	CE	
Total Display Area (m²)										
Remote										
Medea® SD. 75H	1.11	1.66	2.21	3.32					1.90	A E
Medea® ST. 75H	1.49	2.23	2.97	4.46					2.57	A E
Medea® SQ. 75H	1.74	2.60	3.47	5.21					3.02	A F
Medea® SD. 90H	1.25	1.88	2.51	3.76					2.21	A E
Medea® ST. 90H	1.64	2.45	3.27	4.91					2.89	A E
Medea® SQ. 90H	1.88	2.83	3.77	5.65					3.33	A F
Temperature range	3M2 (0...+2)									





External aesthetics & accessories

Options & Accessories

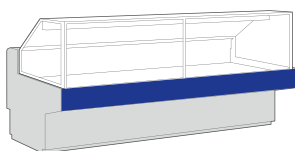
Perfect fit: in addition to your selected Carrier Counter, a wide range of options and accessories can make your counter more of a customer magnet while having the right design, selection of options and accessories fitting your needs, which can make the sales process faster and the shopping experience more enjoyable. The shop operator should be able to carry out operations efficiently. Less strain placed on the store's staff, the more attention they can devote to the customers

It's your choice!

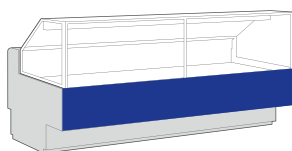
External Aesthetics

Front design

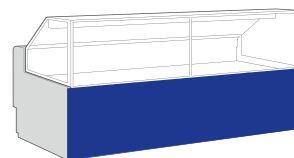
- **Front aesthetic:** Carrier offers a wide range of possibilities when it comes to the design of the counters. Front aesthetic, endwalls and pedestals are available in many designs, material finishings and colours.



Standard



Enhanced



Flat

The above shown front designs are related to the cladding versions. More counter aesthetics like CB-Design, Total Inox are available as well.

Claddings

- Laminate claddings offer a wide range of possibilities from simulating wood to stone and concrete - as you will see on the following pages.
- Carrier recommends using 18 mm waterproof MDF as inner material, with 0,8 mm or 1 mm lamination on both sides. This will ensure the right level of strength and durability, easy cleaning, and protection from humidity.
- An aesthetical and long-lasting alternative is the use of ceramic tiles, applied to a flat surface. With an individual and creative combination, you may mix and match tiles to create your unique design.



For more information on design, consult our COUNTER AESTHETICS CATALOGUE for an overview of materials, colors and decorative versions available.

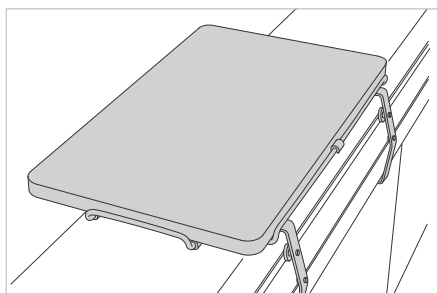


Accessories

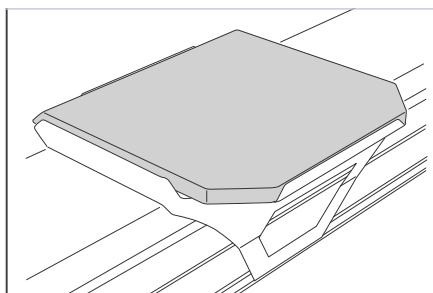
In addition to your choice of Carrier counters, a wide range of accessories can make the sales process faster and the shopping experience more enjoyable. The shop operator should be able to carry out operations efficiently. The less strain placed on the store's staff, the more attention they can devote to customers.

Sliding and fixed accessories

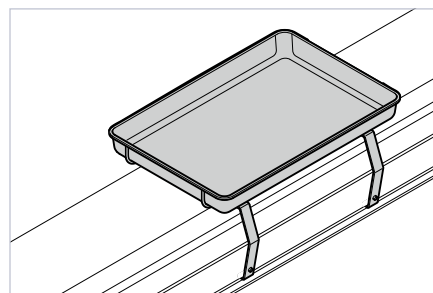
Ergonomic use and flexibility in the placement of the accessories are combined in this solution.



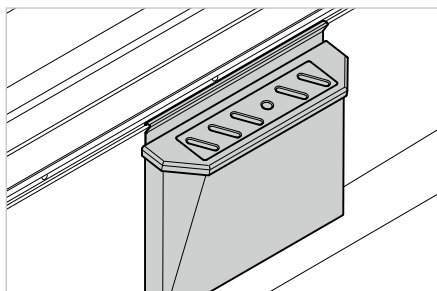
Cutting board, fixed



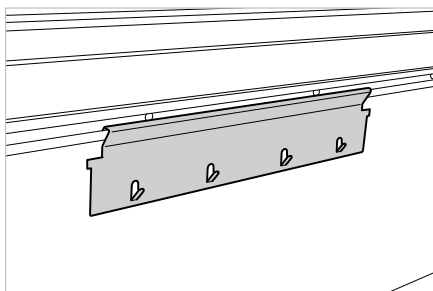
Cutting board, sliding



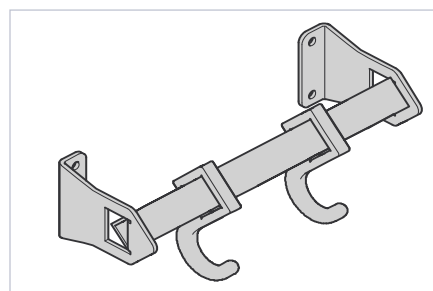
Paper tray, removable



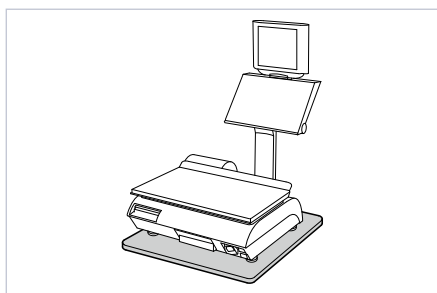
Knife holder, fixed



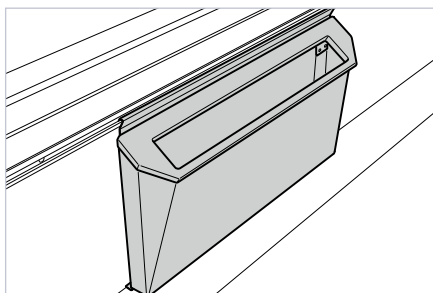
Bag holder, slideable



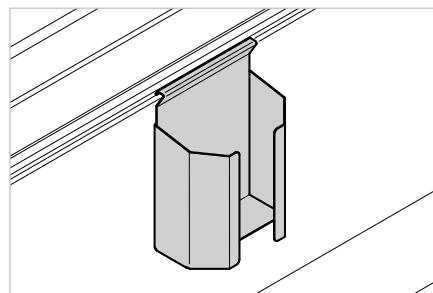
Bag holder, hooks, fixed



Integrated scale, fixed



Paper holder, sliding

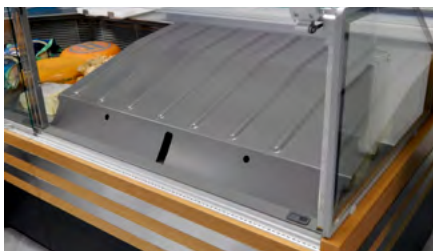


Cup holder

Internal fittings and energy saving



Enhance your products with the use of a stepped display with 2 or 3 levels. Available in stainless steel or painted version.



Night covers provide an economical way to shield refrigeration cases and protect perishable food inside from ambient store heat and light.

* For more information on available accessories, please refer to our accessories catalogue.

Accessories: Straight Line / Curved Line

		Danaos®. 75H	Danaos® S. 75H	Danaos® X.75H	Danaos®. 85H	Danaos® S. 85H	Danaos®. 90H	Danaos® S. 90H	Danaos® X. 90H		
End- / dividing walls	Panorama Endwalls										
	Endwall with thermopane glass left / right	•		•	•		•		•		
	Endwall with thermopane glass for self-service, left / right		•			•		•			
	Endwall with thermopane glass (TOTAL INOX) left / right	•		•	•		•		•		
	Endwall with thermopane glass Self-service (TOTAL INOX), left / right		•			•		•			
	Endwall with thermopane glass (CROSBANC) left / right	•		•	•		•		•		
	Endwall with thermopane glass for back to back cabinet, left / right										
	Endwall with thermopane glass Self-service (CRIOSBANC), left / right		•			•		•			
	Endwall with thermopane glass Self-service (BASIC/FLAT DESIGN), left / right										
	Internally mirrored endwalls										
	Endwall with mirrored thermopane glass, left / right				•		•		•		
	Endwall other										
	Special flat design from metal sheet endwall, left / right	•	•		•	•	•	•			
	Endwall adaptation for higher closed base, +100mm, left / right				•	•	•	•			
	Lateral plinth panel for back to back counters					•		•			
	Panorama dividing walls										
	Dividing wall with thermopane glass, left / right			•	•		•		•		
	Dividing wall with thermopane glass, self-service, left / right					•		•			
	Internally mirrored dividing walls										
	Dividing wall with mirrored thermopane glass, left / right			•	•		•		•		
Multiplexing / gap cover	Back-to-back installation (Multiplexing)										
	Multiplexing kit with, CE cabinet, left / right										
	Multiplexing kit Self service / serve over, left / right	•			•		•				
	Multiplexing kit	•	•	•	•	•	•	•	•		
	Multiplexing kit between same counter with CX (intermediate) wall, left / right	•	•	•	•	•	•	•	•		
	Multiplexing kit PL/hot counter, left / right										
	Multiplexing kit between serve over/semi-vertical with CX (intermediate) wall left / right										
	Gap cover										
	Gap cover for self-service counters back-to-back, Length 94		•			•		•			
	Gap cover for self-service counters back-to-back, Length 125		•			•		•			

Accessories: Straight Line / Curved Line

		Danaos® . 75H	Danaos® S. 75H	Danaos® X.75H		Danaos® . 85H	Danaos® S. 85H		Danaos® . 90H	Danaos® S. 90H	Danaos® X. 90H	
Cabinet base / claddings	Cabinet base adaptation											
	Cabinet with higher closed base, +100mm	_____	_____	_____		•	•		•	•	_____	
	Dividing wall adaptation for higher closed base, +100 mm					•	•		•	•		
	Panels front											
	Wooden cladding in Standard design	•	•	•		•	•		•	•	•	
	Wooden cladding in Enhanced design	•	•	•		•	•		•	•	•	
	Wooden cladding in Flat design design	•	•			•	•		•	•		
	Cladding	•	•	•		•	•		•	•	•	
	Cladding, endwall left / right	•	•	•		•	•		•	•	•	
	Cabinet front others											
	Special flat design from metal sheet					•	•		•	•	_____	
	Plexiglass sliding doors (rear side)	•		•		•			•	•	_____	
	Plexiglass sliding doors for hot counter lg 94 / 125 (rear side)										_____	
	Plinth panel										_____	
	Kickplate for pedestal, durangrey	•	•			•	•		•	•	_____	
	Kickplate for pedestal, jet black	•	•			•	•		•	•	_____	
Bumper	Front bumper, 20 mm											
	Front bumper, ø 20 mm	•	•	•		•	•		•	•	•	
	Front bumper 20x20mm, Inox			•		•	•		•	•	•	
	Front bumper, CRNI brushed 20x20mm			•		•	•		•	•	•	
	Front bumper, 30 mm											
	Front bumper, ø 30 mm	•	•	•		•	•		•	•	•	
	Bumper for endwalls, 20 mm											
	Bumper for endwall, 20 mm, left / right	•	•	•		•	•		•	•	•	
	Bumper for endwall, 20x20mm, inox, left / right			•		•	•		•	•	•	
	Bumper for endwall, CRNI brushed 20x20mm, left / right	•		•		•	•		•	•	•	
	Bumper for endwall for back-to-back cabinets 20mm, left / right						•			•		
	Bumper for endwalls, 30mm											
Bumper for endwall, 30mm, left / right	•	•	•		•	•		•	•	•		
Bumper endwall for back- to-back cabinets, 30mm, left / right						•			•			

Accessories: Straight Line / Curved Line

		Danaos® . 75H	Danaos® S. 75H	Danaos® X.75H	Danaos® . 85H	Danaos® S. 85H	Danaos® . 90H	Danaos® S. 90H	Danaos® X. 90H		
Lighting	Superstructure lighting LED										
	LED Superstructure lighting, 1 row Premium LED		•		•		•		•		
	LED Superstructure lighting, 1 row Premium LED, Slime Line		•		•		•		•		
	LED light color superstructure, COOL WHITE 5700K		•		•		•		•		
	LED light color superstructure, FRESH RED		•		•		•		•		
	LED light color superstructure, NEUTRAL WHITE		•		•		•		•		
	LED light color superstructure, WARM WHITE 3000K		•		•		•		•		
	Plinth lighting										
	LED, Plinth lighting, Premium LED				•		•		•		
LED Lightcolor Cool White 5700K, plinth				•		•		•			
Price marking	Scanner pricing rail, front pane										
	Scanner pricing rail (behind front pane), 40mm, black		•	•	•	•	•	•	•	•	
	Pricing rail holder, front pane										
	Pricing rail holder, CrNi (behind front pane)		•	•	•	•	•	•	•	•	
	Scanner pricing rail, worktop										
	Scanner price rail (on front of work top) 40 mm, black		•	•	•	•	•	•	•	•	
	Pricing rail holder, worktop										
Pricing rail holder CrNi (on front of work top)		•	•	•	•	•	•	•	•		
Interior accessories	Glass shelves										
	Interim glass shelf (non refrigerated shelf)					•		•		•	
	Proudct dividers for display shelves										
	Product divider, high		•		•	•	•	•	•	•	
	Partition, high 2-3 step		•		•	•	•	•	•	•	
	Partition, low		•	•	•	•	•	•	•	•	
	Product divider, low 2-3 step		•	•	•	•	•	•	•	•	
	Shelf tiers, painted										
	Shelf tiers, 2 step display deck, painted		•	•	•	•	•	•	•	•	
	Shelf tiers, 3 step display deck, painted		•	•	•	•	•	•	•	•	
	Shelf tiers, CrNi										
	Shelf tiers, 2 step, display deck, CrNi		•	•	•	•	•	•	•	•	
	Shelf tiers, 3 step, display deck, CrNi		•	•	•	•	•	•	•	•	
	Wire fences										
	Product stop				•	•	•	•	•	•	
Bottom decks painted											
Base wire shelf with wire fence, painted				•	•	•	•	•	•		

Accessories: Straight Line / Curved Line

		Danaos®. 75H	Danaos® S. 75H	Danaos® X. 75H	Danaos® . 85H	Danaos® S. 85H	Danaos®. 90H	Danaos® S. 90H	Danaos® X. 90H			
Interior accessories	Bottom decks CrNi											
	Base wire shelf with wire fence, CrNi				•		•	•		•	•	•
	Bottom decks, other											
	Partition transparent, fixed, left / right		•		•	•	•	•	•	•	•	
		Partition transparent, fixed, self-service left / right			•			•				
Energy-saving pack	Night cover											
	Night cover, kit		•	•	•	•	•	•	•	•	•	
Accessories serving side	Accessories (serve over side)											
	cutting board											
	Cutting board 400 x 600 mmm, removable		•	•	•	•	•	•	•	•	•	
	Cutting board 300 x 500 mmm, with wired fence / frame		•	•	•	•	•	•	•	•	•	
	Cutting board 300 x 600 mmm, with wired fence / frame		•	•	•	•	•	•	•	•	•	
	Knife sheath											
	Knife sheath, fixed L 300 x H 270 mm		•	•	•	•	•	•	•	•	•	
	Knife sheath, fixed L 300 x H 380 mm		•	•	•	•	•	•	•	•	•	
	Scale / slicer platform											
	Scale / slicer platform, 350 x 350 mm		•	•	•	•	•	•	•	•	•	
	Scale / slicer platform, 450 x 390 mm		•	•	•	•	•	•	•	•	•	
	Scale / slicer platform, 540 x 440mm		•	•	•	•	•	•	•	•	•	
	Scale / slicer platform, 450 x 390 mm, with hole for cables		•	•	•	•	•	•	•	•	•	
	Hanging bar for bag											
	Support for paper holder		•	•	•	•	•	•	•	•	•	
	Paper holder, L =900mm, sliding		•	•	•	•	•	•	•	•	•	
	Hanging bar for bags, 1000mm		•	•	•	•	•	•	•	•	•	
	Hanging bar for bags, 150mm		•	•	•	•	•	•	•	•	•	
	Worktop cover											
	Worktop cover, 280mm, magna savannah				•	•	•	•	•	•	•	
	Serving side											
	Paper box, fixed, 687mm		•	•	•	•	•	•	•	•	•	
	Wrapper tray on worktop (415 x 280 x 40mm)		•	•	•	•	•	•	•	•	•	
	Bag and wrapper film holder, 590mm		•	•	•	•	•	•	•	•	•	
	Paper roll holder, 600mm		•	•	•	•	•	•	•	•	•	
Accessories Customer side	Basket shelf (only for criosbanc CB-verion)											
	Multiplexing kit for front basket rail				•	•	•	•	•	•	•	
	End cap for front basket rail, left / right				•	•	•	•	•	•	•	
	Front bag shelf (horizontal), of 4 INOX tubes, D. 30 mm				•	•	•	•	•	•	•	

Accessories: Straight Line / Curved Line

		Danaos® . 75H	Danaos® S. 75H	Danaos® X.75H	Danaos® . 85H	Danaos® S. 85H	Danaos® . 90H	Danaos® S. 90H	Danaos® X. 90H
Color painting	Front fascia / front cladding								
	Front fascia (CB), painted	•	•	•	•	•	•	•	•
	Coloured exterior finish, Plinth panel								
	Plinth for endwall, painted	•	•	•	•	•	•	•	•
	Plinth panel, painted CB	•	•	•	•	•	•	•	•
	Coloured interior finish								
	Internal fittings, painted	•	•	•	•	•	•	•	•
	Coloured interior finish air baffle / base tub								
	Air baffle, painted in standard colour instead of CrNi (mirror effect)	•	•	•	•	•	•	•	•
	Air baffle, painted	•	•	•	•	•	•	•	•
	Set of bottom deck, painted	•	•	•	•	•	•	•	•
	Base tub + internal fittings painted	•	•	•	•	•	•	•	•
	Coloured endwall								
	Endwall painted outside			•	•	•	•	•	•

Accessories

Accessories: Semi-vertical Medea®

		Medea® SD 75H M2-1	Medea® ST 75H A M2-1	Medea® SQ 75H A M2-1	Medea® SD 90H A M2-1	Medea® ST 90H A M2-1	Medea® SQ 90H A M2-1
End- / dividing walls	Panorama Endwalls						
	Endwall with thermopane glass SD left / right	•			•		
	Endwall with thermopane glass ST left / right		•			•	
	Endwall with thermopane glass SQ left / right			•			•
	Internally mirrored endwalls						
	Endwall with mirrored thermopane glass, SD left / right	•			•		
	Endwall with mirrored thermopane glass, ST left / right		•			•	
	Endwall with mirrored thermopane glass, SQ left / right			•			•
	Bumper for endwalls 20 mm						
	Bumper for endwall, 20 mm, left / right	•	•	•	•	•	•
	Bumper for endwall for back-to-back cabinets 20 mm, left / right	•	•	•	•	•	•
	Bumper for endwalls 30 mm						
	Bumper endwall, 30 mm, left / right	•	•	•	•	•	•
	Endwall other						
	Lateral plinth panel for back-to-back counters	•	•	•	•	•	•
	Panorama dividing walls						
	Dividing wall with thermopane glass, Danaos®, left / right - SD	•			•		
	Dividing wall with thermopane glass, Danaos®, left / right - ST		•			•	
	Dividing wall with thermopane glass, Danaos®, left / right - SQ			•			•
	Panorama dividing walls						
	Surcharge special thermopane glass left/right dividing/endwall to Medea®	•	•	•	•	•	•
	Surcharge special thermopane glass mirror left/right dividing/endwall to Medea®	•	•	•	•	•	•
	Surcharge special thermopane glass left/right dividing wall to Danaos®	•	•	•	•	•	•
	Surcharge special thermopane glass mirror left/right dividing wall to Danaos®	•	•	•	•	•	•
	Internally mirrored dividing walls						
	Dividing wall with mirrored thermopane glass, Danaos®, left / right - SD	•			•		
	Dividing wall with mirrored thermopane glass, Danaos®, left / right - ST		•			•	
	Dividing wall with mirrored thermopane glass, Danaos®, left / right -SQ			•			•

		Medea® SD 75H M2-1	Medea® ST 75H A M2-1	Medea® SQ 75H A M2-1	Medea® SD 90HA M2-1	Medea® ST 90H A M2-1	Medea® SQ 90H A M2-1
Multiplexing / gap cover	Back-to-back installation (Multiplexing)						
	Multiplexing kit with, CE cabinet, left / right	•	•	•	•	•	•
	Multiplexing kit	•	•	•	•	•	•
	Multiplexing kit between same counter with CX (intermediate) wall, left / right	•	•	•	•	•	•
	Multiplexing kit between serve over / semi-vertical with CX (intermediate) wall, left / right	•	•	•	•	•	•
	Gap cover						
	Gap cover for counters back-to-back, Lengths 125, 188, 250, 375	•	•	•	•	•	•
	Gap cover for self-service counters back-to-back, Length 125	•	•	•	•	•	•
	Cabinet front others						
	Front glazing straight, Lengths 125, 188, 250, 375				•	•	•
	Front glazing straight - EC45, EC90, IC45, IC90				•	•	•
	Front glazing straight - CE				•	•	•
	Plastic back panel, Lengths 125, 188, 250, 375	•	•	•	•	•	•
	Plinth panel						
	Kickplate for pedestal, durangrey	•	•	•	•	•	•
	Kickplate for pedestal, jet black	•	•	•	•	•	•
Cabinet base / claddings	Panels front						
	Wooden cladding in Standard design	•	•	•	•	•	•
	Wooden cladding in Enhanced design	•	•	•	•	•	•
	Wooden cladding in Flat design design	•	•	•	•	•	•
	Cladding, Lengths 125, 188, 250, 375	•	•	•	•	•	•
	Cladding - EC45, EC90, IC45, IC90				•	•	•
	Cladding - CE	•	•	•	•	•	•
	Cladding, endwall left / right	•	•	•	•	•	•
	Front fascia / front cladding						
	Front fascia (CB), painted, Lengths 125, 188, 250, 375	•	•	•	•	•	•
	Front fascia (CB), painted - EC 45, IC 45, EC 90, IC 90				•	•	•
	Front fascia (CB), painted - CE	•	•	•	•	•	•

Accessories: Semi-vertical Medea®

		Medea® SD 75H M2-1	Medea® ST 75H A M2-1	Medea® SQ 75H A M2-1	Medea® SD 90H A M2-1	Medea® ST 90H A M2-1	Medea® SQ 90H A M2-1
Bumper	Front bumper, 20 mm						
	Front bumper, D. 20, Lengths 125, 188, 250, 375	•	•	•	•	•	•
	Front bumper, D. 20 - EC	•	•	•	•	•	•
	Front bumper 20 x 20, Inox						
	Front bumper, CRNI brushed 20x20						
	Front bumper, 30 mm						
	Front bumper, D. 30, Lengths 125, 188, 250, 375	•	•	•	•	•	•
	Front bumper, D. 30 - CE	•	•	•	•	•	•
Lighting	Canopy lighting LED						
	Canopy lighting, Premium LED, Lengths 125, 188/CE75, 250, 375	•	•	•	•	•	•
	Canopy lighting, Premium LED, Length CE 90				•	•	•
	LED light color, COOL WHITE 5700K - canopy	•	•	•	•	•	•
	LED light color, FRESH RED - canopy	•	•	•	•	•	•
	LED light color, NEUTRAL WHITE 4000K - canopy	•	•	•	•	•	•
	LED light color, WARM WHITE 3000K - canopy	•	•	•	•	•	•
	Shelf lighting LED						
	Shelf lighting, Premium LED, Lengths 125, 188/CE75, 250, 375	•	•	•	•	•	•
	Shelf lighting, Premium LED, Length CE 90				•	•	•
	LED light color, COOL WHITE 5700K - canopy	•	•	•	•	•	•
	LED light color, FRESH RED - canopy	•	•	•	•	•	•
	LED light color, NEUTRAL WHITE - canopy	•	•	•	•	•	•
	LED light color, WARM WHITE 3000K - canopy	•	•	•	•	•	•
	Plinth lighting						
	LED, Plinth lighting, Premium LED, Lengths 125, 188, 250, 375				•	•	•
	LED, Plinth lighting, Premium LED - CE				•	•	•
	LED Lightcolor Cool White 5700K, plinth				•	•	•
Price marking	Scanner pricing rail 40 mm (shelf)						
	Scanner priceholder, 40mm (shelf), black, Lengths 125, 188, 250, 375	•	•	•	•	•	•
	Scanner priceholder, 40mm (shelf), black, EC 45				•	•	•
	Scanner priceholder, 40mm (shelf), black, IC 45				•	•	•
	Scanner priceholder, 40mm (shelf), black, CE	•	•	•	•	•	•

		Medea® SD 75H M2-1	Medea® ST 75H A M2-1	Medea® SQ 75H A M2-1	Medea® SD 90H A M2-1	Medea® ST 90H A M2-1	Medea® SQ 90H A M2-1
Price marking	Scanner pricing rail, front pane						
	Scanner price rail (behind front pane), 40 mm, black, Lengths 125, 188, 250, 375	•	•	•	•	•	•
	Scanner price rail (behind front pane), 40 mm, black, CE	•	•	•	•	•	•
	Pricing rail holder, front pane						
	Pricing rail holder, CrNi (behind front pane), Lengths 125, 188, 250, 375	•	•	•	•	•	•
	Pricing rail holder, CrNi (behind front pane), CE	•	•	•	•	•	•
Interior accessories	Display shelves 300 mm						
	1 row of display shelves, CrNi (brushed), H25, 300 mm, Lengths 125, 188, 250, 375	•	•	•	•	•	•
	1 row of display shelves, CrNi (brushed), H25, 300 mm, EC45, EC90, IC45, IC90				•	•	•
	1 row of display shelves, CrNi (brushed), H25, 300 mm, CE				•	•	•
	1 row of display shelves, painted, H25, 300 mm, Lengths 125, 188, 250, 375	•	•	•	•	•	•
	1 row of display shelves, painted, H25, 300 mm, EC45, EC90, IC45, IC90				•	•	•
	1 row of display shelves, painted, H25, 300 mm, CE	•		•			
	Display shelves 350 mm						
	1 row of display shelves, CrNi (brushed), H25, 350 mm, Lengths 125, 188, 250, 375	•	•	•	•	•	•
	1 row of display shelves, CrNi (brushed), H25, 350 mm, EC45, EC90, IC45, IC90				•	•	•
	1 row of display shelves, CrNi (brushed), H25, 350 mm, CE				•	•	•
	1 row of display shelves, painted, H25, 350 mm, Lengths 125, 188, 250, 375	•	•	•	•	•	•
	1 row of display shelves, painted, H25, 350 mm, EC45, EC90, IC45, IC90				•	•	•
	1 row of display shelves, painted, H25, 350 mm, CE				•	•	•
	Display shelves 400 mm						
	1 row of display shelves, CrNi (brushed), H25, 400 mm, Lengths 125, 188, 250, 375	•	•	•	•	•	•
	1 row of display shelves, CrNi (brushed), H25, 400 mm, EC45, EC90, IC45, IC90				•	•	•
	1 row of display shelves, CrNi (brushed), H25, 400 mm, CE				•	•	•
	1 row of display shelves, painted, H25, 400 mm, Lengths 125, 188, 250, 375	•	•	•	•	•	•
	1 row of display shelves, painted, H25, 400 mm, EC45, EC90, IC45, IC90				•	•	•
	1 row of display shelves, painted, H25, 400 mm - CE				•	•	•

Accessories: Semi-vertical Medea®

		Medea® SD 75H M2-1	Medea® ST 75H A M2-1	Medea® SQ 75H A M2-1	Medea® SD 90H A M2-1	Medea® ST 90H A M2-1	Medea® SQ 90H A M2-1
Interior accessories	Display shelves 450 mm						
	1 row of display shelves, CrNi (brushed), H25, 450 mm, Lengths 125, 188, 250, 375	•	•	•	•	•	•
	1 row of display shelves, CrNi (brushed), H25, 450 mm, EC45, EC90, IC45, IC90				•	•	•
	1 row of display shelves, CrNi (brushed), H25, 450 mm, CE				•	•	•
	1 row of display shelves, painted, H25, 450 mm, Lengths 125, 188, 250, 375	•	•	•	•	•	•
	1 row of display shelves, painted, H25, 450 mm, EC45, EC90, IC45, IC90				•	•	•
	1 row of display shelves, painted, H25, 450 mm, CE	•	•	•			
Interior accessories	Display shelves 500 mm						
	1 row of display shelves, CrNi (brushed), H25, 500 mm, Lengths 125, 188, 250, 375	•	•	•	•	•	•
	1 row of display shelves, CrNi (brushed), H25, 500 mm, EC45, EC90, IC45, IC90				•	•	•
	1 row of display shelves, CrNi (brushed), H25, 500 mm, CE				•	•	•
	1 row of display shelves, painted, H25, 500 mm, Lengths 125, 188, 250, 375	•	•	•	•	•	•
	1 row of display shelves, painted, H25, 500 mm, EC 45, EC 90, IC 45, IC 90				•	•	•
	1 row of display shelves, painted, H25, 500 mm - CE				•	•	•
	Product dividers for display shelves						
	Product divider for shelf 350, 400, 450, 500 mm	•	•	•	•	•	•
	Wire divider 750 mm	•	•	•			
	Wire divider 900 mm				•	•	•
	Plexiglass divider for shelf 350, 400, 450, 500 mm	•	•	•	•	•	•
	Plexiglass divider 750 mm	•	•	•			
	Plexiglass divider 900 mm				•	•	•
	Holder for product divider, Lengths 125, 188, 250, 375 mm	•	•	•	•	•	•
	Holder for product divider CE	•	•	•	•	•	•
	Wire fence						
	Wire fence as product stop H50 for shelf, Lengths 125, 188, 250, 375	•	•	•	•	•	•
	Wire fence as product stop H50 for shelf, EC45, EC 90, IC45, IC90				•	•	•
	Wire fence as product stop H50 for shelf - CE	•	•	•	•	•	•
	Plexi glass fence as product stop H50 for shelf, Lengths 125, 188, 250, 375	•	•	•	•	•	•
	Plexi glass fence as product stop H50 for shelf, EC 45, EC 90, IC 45, IC 90				•	•	•
	Plexi glass fence as product stop H50 for shelf - CE	•	•	•	•	•	•

		Medea® SD 75H M2-1	Medea® ST 75H A M2-1	Medea® SQ 75H A M2-1	Medea® SD 90HA M2-1	Medea® ST 90H A M2-1	Medea® SQ 90H A M2-1
Interior accessories	Display shelf accessories, other						
	Support for shelf divider	•	•	•	•	•	•
	Wire fences						
	Product stop, Lengths 125, 188, 250, 375	•	•	•	•	•	•
	Product stop CE	•	•	•	•	•	•
	Bottom decks painted						
	Base wire shelf with wire fence, painted, Lengths 125, 188, 250, 375	•	•	•	•	•	•
	Base wire shelf with wire fence, painted CE	•	•	•	•	•	•
	Bottom decks CrNi						
	Base wire shelf with wire fence, CrNi, Lengths 125, 188, 250, 375	•	•	•	•	•	•
	Base wire shelf with wire fence, CrNi, CE	•	•	•	•	•	•
Energy-saving pack	Night blind						
	Canopy in night blind version, CE				•	•	•
	Manual night blind, Lengths 125, 188, 250, 375	•	•	•	•	•	•
	Manual night blind - CE	•	•	•	•	•	•
Color painting	Canopy painted						
	Canopy painted, Lengths 125, 188, 250, 375	•	•	•	•	•	•
	Canopy painted - EC45, EC90, IC45, IC90				•	•	•
	Canopy painted - CE	•	•	•	•	•	•
	Coloured exterior finish, Plinth panel						
	Plinth for endwall, painted	•	•	•	•	•	•
	Plinth panel, painted CB, Lengths 125, 188, 250, 375	•	•	•	•	•	•
	Front facia (CB), painted - EC45, EC90, IC45, IC90				•	•	•
	Plinth panel, painted CB - CE	•	•	•	•	•	•

Accessories: Semi-vertical Medea®

		Medea® SD 75H M2-1	Medea® ST 75H A M2-1	Medea® SQ 75H A M2-1	Medea® SD 90H A M2-1	Medea® ST 90H A M2-1	Medea® SQ 90H A M2-1
Color painting	Coloured interior finish						
	Pedestals painted	•	•	•	•	•	•
	Internal fittings, painted (Semi Vertical), Lengths 125, 188, 250, 375	•	•	•	•	•	•
	Internal fittings, painted (Semi Vertical) - EC45, EC90, IC45, IC90				•	•	•
	Internal fittings, painted (Semi Vertical) - CE	•	•	•	•	•	•
	Coloured interior finish air baffle / base tub						
	Air baffle, painted in standard colour instead of CRNI (mirror effect)						
	Air baffle CrNi (mirror effect), Lengths 125, 188, 250, 375	•	•	•	•	•	•
	Air baffle CrNi (mirror effect) - EC45, EC90, IC45, IC90				•	•	•
	Air baffle CrNi (mirror effect) - CE	•	•	•	•	•	•
	Air baffle, painted (standard colour --> option), Lengths 125, 188, 250, 375	•	•	•	•	•	•
	Air baffle, painted (standard colour --> option) - CE	•	•	•	•	•	•
	Set of bottom deck, CrNi, Lengths 125, 188, 250, 375	•	•	•	•	•	•
	Set of bottom deck, CrNi - EC45, EC90, IC45, IC90				•	•	•
	Set of bottom deck, CrNi - CE	•	•	•	•	•	•
	Base tub + internal fittings CrNi, Lengths 125, 188, 250, 375	•	•	•	•	•	•
	Base tub + internal fittings CrNi - EC45, EC90, IC45, IC90				•	•	•
	Base tub + internal fittings CrNi - CE	•	•	•	•	•	•
	Coloured endwall						
	Endwall painted outside	•	•	•	•	•	•







Counter – Special Solutions

Marché Fresh

The ideal self-service counter for impulse sales

Marché Fresh counters offer a great look. Stainless steel materials and modern lines easily integrate into the interior design of contemporary stores. Marché Fresh creates a highlight area that draws the shoppers' attention to the products on display.



Benefits at a glance

- Flexibility with different modular lengths and heights
- Optimized energy efficiency and performance with EC fans
- High-quality, easy-to-clean materials
- Easy access to internal components for cleaning and service

Standard configuration

- Fan-assisted air circulation
- Different display decks and heights
- Inclined display area

Options

- Glass shelves
- Integrated night blind
- Additional intermediate shelves

Application



Soft drinks



Dairy products



Prepacked
cheese

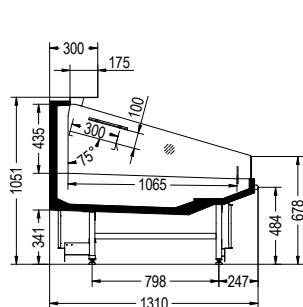


Prepacked fruits
& vegetables

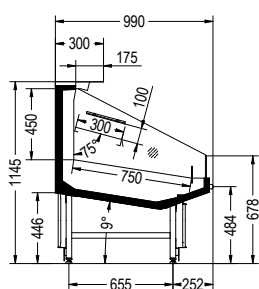


Prepacked
sandwiches

Basic models



Marché Fresh L2H



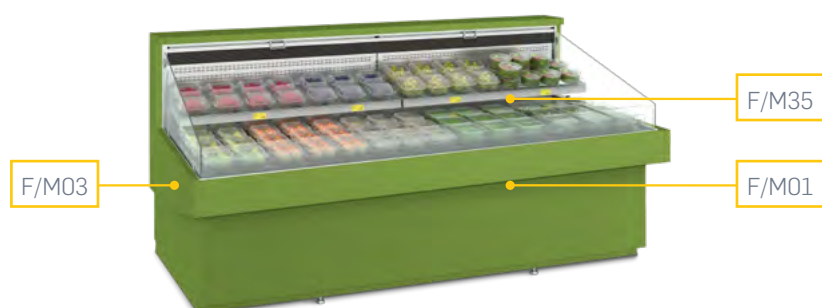
Marché Fresh N9H



Models available

- Remote
- Self-Service

Customization



Customization	
F/M01	EXTERIOR
F/M03	ENDWALL; EXTERNAL
F/M35	INTERIOR EQUIPMENT

For more information on design, consult our COUNTER AESTHETICS CATALOGUE for an overview of materials, colors and decorative versions available.

Technical data

Marché Fresh	125	188	192	250	375	Energy label
	Total display area (m²)					
Marché Fresh L2H	1.59	2.38	–	3.18	4,76	<div><div>A</div><div>B</div><div>D</div></div>
Marché Fresh N9H	1.33	1.99	2.04	2.66	3.98	<div><div>A</div><div>B</div><div>E</div></div>
Temperature range (°C)	3M2 (0...+2)					

Glycos

Pastry products to highlight your day

With this modern and stylish serve-over cabinet, your pastry goods can be presented in a tasty and appealing way. Whether on the chilled bottom deck or the non-refrigerated glass shelves, the goods are always perfectly presented, and the illumination from the top brings additional brightness. A remote or plug-in version allows flexibility to suit the shop owner's preference.

Its compact depth brings advantages where every centimeter counts and the refrigerated compartment allows storage of goods for an easy and quick refill of the presentation area.



Benefits at a glance

- Stylish serve-over cabinet to highlight your pastry presentation
- Modern, straight glass design with unobstructed views of the goods
- Compact depth for places where every centimeter counts
- Easy-to-fill presentation area with refrigerated base shelf and 2 glass shelves
- Refrigerated compartment as additional storage room
- Flexibility in operation and positioning with remote or plug-in version

Standard configuration

- Ventilated cabinet with stainless steel interior
- Remote (CO₂) or Plug-in (R452A) version
- Straight front glass
- Compact depth (bottom deck: 615 mm)
- Refrigerated bottom shelf and 2 non-refrigerated glass shelves
- Refrigerated storage room with hinged window opening doors
- LED lighting at the top
- Thermostatic exp. valve

Options

- Controllers
- Electronic valves
- Display deck stainless steel or Corian®
- Front & side bumper squared 20×20
- Castors (swiveling)
- Different internal and external colors
- Cladding available upon request
- Rear sliding plexi doors

Application



Soft drinks



Dairy products



Fruits & vegetables



Delicatessen



Pastry



Sandwiches



Prepacked fruits & vegetables



Prepacked delicatessen

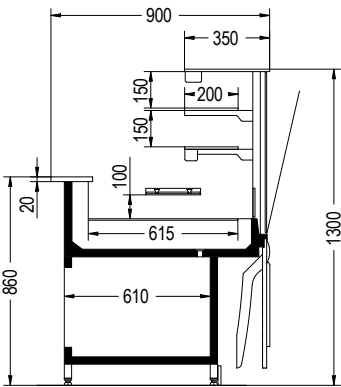


Prepacked pastry



Prepacked sandwiches

Basic models



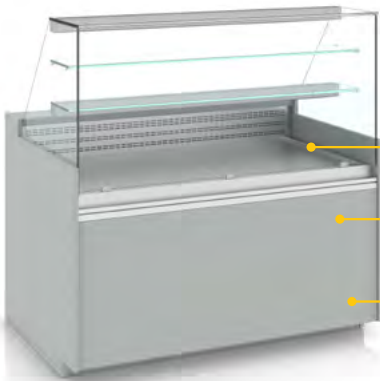
Glycos

	Glycos	X	125	M2	1
Cabinet name					
Name suffix					
Module length /type					
Temperature class					
Revision index					

Models available

- Remote / Plug-In
- Serve-Over

Customization



Customization	
F/M07	DECOR FRONT PANEL
F/M12	KICKPLATE
F/M37	AIR BAFFLE PLATE

For more information on design, consult our team.

Technical data

Glycos*	Modules			
	1.250	1.6250	2.050	2.500
	Total display area (m²)			
Glycos (remote)	1.18	1.52	1.85	2.22
Glycos (plug in)**	1.18	1.52	1.85	2.22
Temperature range	3M2 (base shelf)			

* These cabinets are not within the scope of "Commission Delegated Regulation (EU) 2019/2018 supplementing Regulation (EU) 2017/1369" with regard to energy labeling of refrigerating appliances with a direct sales function.

** R452A, R290





Technical Information

The EcoDesign regulation

The implementation of the EcoDesign directive for “refrigerated display cabinets with a direct sales function” was adopted by the European Union Commission in October 2019. The application date for the requirements is the 1st of March 2021. The directive applies to newly produced refrigerated cabinets only – the

systems, racks and condensing units are covered by other regulations. The compliance is declared by the manufacturer with the declaration of conformity and providing technical data to a European database called EPREL and the CE-mark. A verification procedure will be applied by the member states.

All Carrier products presented in this catalogue are EcoDesign compliant.

Energy Labeling

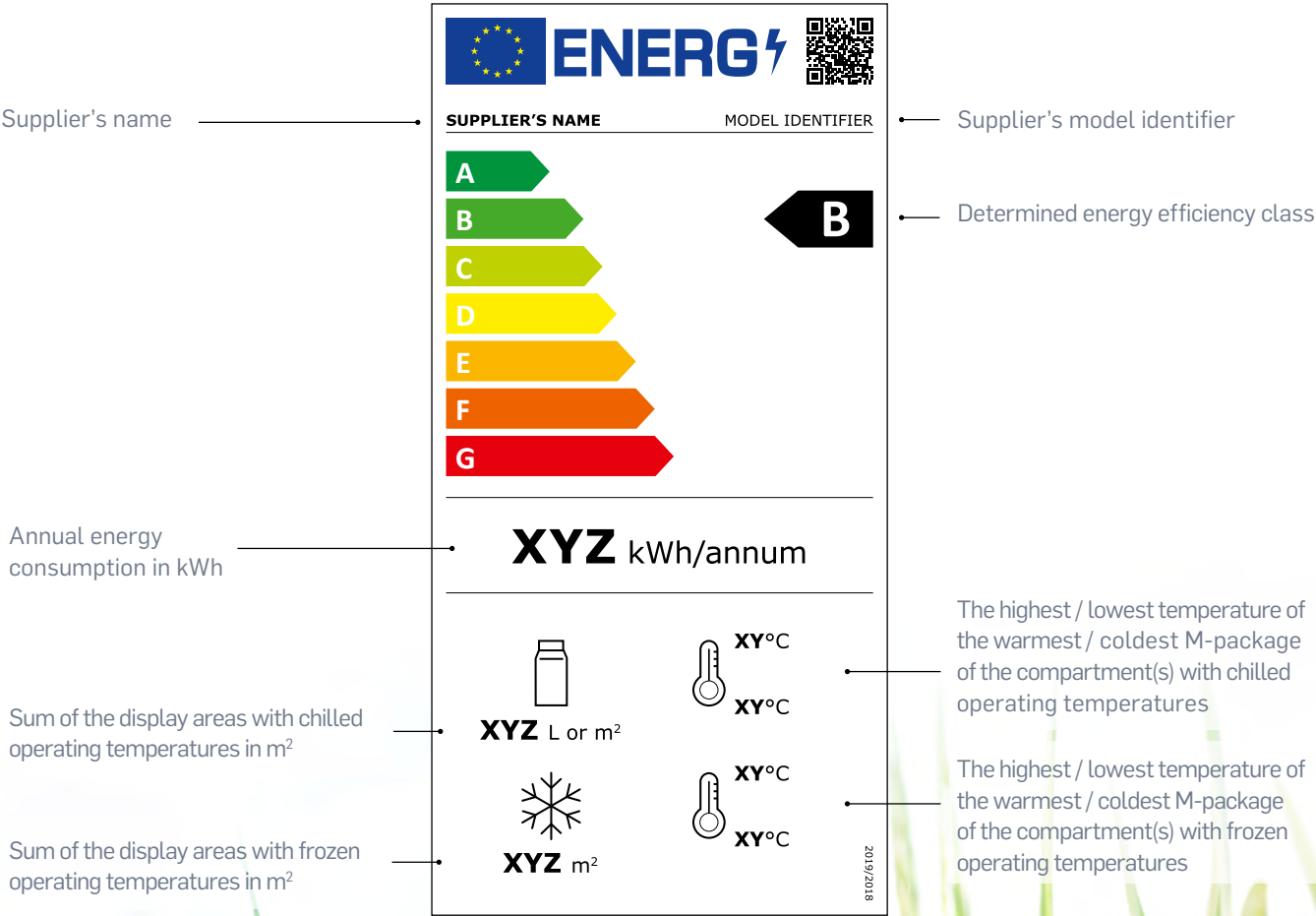
The objective of Energy Labeling is to give clear, easy-to-understand label information on the product energy efficiency, and classify products according to their level of efficiency (from

G to A), with an overall effect of pulling the market towards more energy efficient products. Products marketed prior to March 2021 are not affected.

ENERGY EFFICIENCY CLASS	ENERGY EFFICIENCY INDEX
A	EEI < 10
B	10 ≤ EEI < 20
C	20 ≤ EEI < 35
D	35 ≤ EEI < 50
E	50 ≤ EEI < 65
F	65 ≤ EEI < 80
G	100 > EEI ≥ 80

The Label

Each new refrigerating appliance will be supplied with a printed label gathering energy related information:



Excellence in tests and qualification of cabinets

Outstanding technology based on 60 years development experience

With around twenty testing rooms, Carrier is one of the best-equipped manufacturers in Europe. Most testing rooms are equipped according to the ISO 23953 standard (refrigerated display cabinets classification, requirement and test conditions) to ensure comparable and good product performance. Besides fulfilling ISO 23953 requirements, Carrier has its own internal tests, standards and requirements that each cabinet has to pass before going to market. This ensures the right quality and is reflected in robust, reliable products to maximize the lifetime of each refrigerated display cabinet.

Measuring temperature performance

Carrier declares the temperature performance of the cabinet according to the ISO 23953 standard, which defines the refrigerated cabinet requirements and test conditions.

ISO 23953 - Refrigerated display cabinets classification, requirement and test conditions

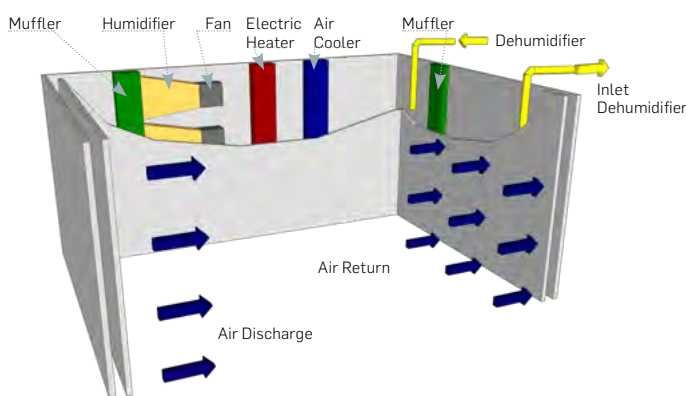
The refrigerated display cabinets are classified according to the standard ISO 23953. This standard defines the classification, requirement and test conditions for representative refrigerated display cabinets, including the minimum size of the test room, side air-flow, light intensity, temperature and humidification control, calibrated measurements, etc.

Thanks to ISO 23953, customers can compare the temperature classification according to the same testing procedure for all manufacturers in Europe who strictly follow the standard.

Climate room requirements and setup

ISO 23953 defines exactly the requirements and tolerances of a climate room including:

- Size of the room
- Side airflow speed and direction relative to the cabinet
- Calibration of the measurement equipment
- Where to place the cabinet in the climate room
- Color of room and light intensity



Example of Carrier testing room. The above picture illustrates how a climate room for testing the refrigeration equipment looks like.

Climate class – describes the environment outside of the cabinet

The climate class defines the certain ambient test condition (temperature and relative humidity) during the testing period. The standard describes several climate classes out of which for commercial refrigeration usually climate class 3 is used to measure and declare the temperature performance.

Example: "climate class 3"
Temperature: 25 °C
Rel. humidity: 60 %

Temperature class – describes the temperature performance inside the cabinet

The temperature performance is tested in a cabinet with product-simulation models, called M-package. The M-package simulates the thermal characteristic of meat products.

Cabinet temperature performance means:

- How well can the cabinet hold the temperature of a chilled or frozen product – simulation models at lab climate conditions
- How small is the cabinet storage temperature deviation of product – simulation models at lab climate conditions
- Temperature performance is tested by simulating different operation use cases: shop closed (light off, night curtain down, no door opening) shop open and commissioning of cabinet (doors / lids long open) shop open consumer take products (regular door / lid opening)

There are three main temperature class groups: Low, Medium and High temperature. These main groups are split into different temperature classes indicated by a number following the group letter: Example M2. The higher the number, the higher the difference between the lowest M-package temperature and the highest M-package temperature.

Example: "Temperature Class M2"
(Medium temperature class 2)
Warmest M-package: max. +7°C
Coldest M-package: min. -1 °C

Link between climate class and temperature class

Because the temperature inside a cabinet is strongly influenced by the environment's temperature and humidity, the temperature class is only a meaningful declaration if it is linked to a climate class. For this reason, a full cabinet declaration always consists out of climate class and temperature class.

Example "3M2" (At climate class 3, the cabinet reaches temperature performance M2)
3= climate class (certain ambient test condition during testing)
M2= Temperature class (specified highest and lowest M-package temperature)

Laboratory vs. operation in real store environment

According to the ISO 23953-2 standard Appendix B, there are significant different operation conditions between lab and store operation, especially for remote cabinets. The following section describes and explains the difference to the application in the field.

Difference between laboratory and store data for remote cabinets

The conditions of a remote cabinet in the store differ greatly from the lab conditions. Usually, the cabinets in a store are multiplexed, located against a wall and the ambient conditions are lower. Using direct lab data for remote cabinets would lead to oversizing of piping and compressor racks. Based on this, Carrier provides for E6 remote cabinets in the technical data sheets rack sizing data for the standard configuration at store condition 25°C / 60 % rel. H. and 22°C / 55 % rel. h. This data is available and optimized for each investment and life cycle.

Based on Carrier's leading expertise in refrigerant system design, our general recommendation is:

- Rack design data 25/60 application:
Stores in warm climates, stores with difficult climate situations, cabinet in a non-ideal place (high humidity, high temperature, close to a door, etc.)
- Rack design data 22/55 application:
Store in middle and north Europe, stores with moderate climate (with air conditions, remote multiplexing cabinets)

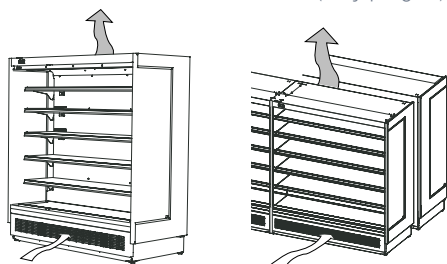
Technical data for plug-in cabinets

To have comparable energy consumption within the Carrier range, we specify the energy consumption for the standard configuration of plug-in cabinets, according to ISO 23953 and climate class 3 conditions. This makes the data comparable; however, the real energy consumption in a store is usually lower.

Influence of the cabinet installation on the performance

The installation can have significant effects on the energy and temperature performance. There are some requirements, which need to be kept to ensure that the cabinets are working properly.

- Do not install the cabinet outside or next to heating radiators or other heat sources
- Keep a distance from the wall as indicated in the operating manual
- Avoid direct sunlight radiation impact
- Keep free the air intake and outlet area (only plug-in)



Example of a plug-in cabinet which needs free air flow in front and on top of cabinet.

Carrier internal testing

To ensure a long lifetime and proper operation, Carrier has defined internal standards for robustness and stress tests of a cabinet as well as components.

Static robustness test

To test the cabinet and shelf strength, all shelves are loaded with a certain weight for several days. The deflection of brackets and shelves is checked under load and after unloading the cabinet. Only if the cabinet deflection and deformation stay within the small tolerances defined by the Carrier quality department, the cabinet will be released to the market. With high requirements on cabinet stability and strength, Carrier ensures a high-quality product, safe and stable for years of operation.

Dynamic testing of doors and lids

The door opening test makes it possible to simulate several years of usage that our doors, hinges, and handles are likely to experience within just a few weeks. During the test, the system is continuously monitored and checked in terms of abrasion, break / damage and deformation. The system will only pass the internal qualification if it can resist several simulated years in the tough life of a supermarket.

For double glass doors, Carrier requires additional tests to ensure that the sealing works properly and the doors do not get condensation between the glasses after some years.

Packaging and shipping test

Before each serial launch, Carrier conducts a special packaging and transportation test. This happens with one or several cabinets in a truck going on a defined road with various road conditions. After the transport, the cabinet and the packaging are checked visually. This ensures that the cabinets will arrive to our customers in the same condition as they were packaged in the factory.

CE (Conformité Européenne) certification

The Carrier cabinets are compliant with the relevant standards or parts of the standards, as confirmed with the CE declaration of conformity:

- ISO 23953-1 (Refrigerated display cabinets, general)
- ISO 23953-2 (Refrigerated display cabinets, requirement)
- EN 60335-1 (Household and similar electrical appliances. Safety. General requirements)
- EN 60335-2-89 (safety requirement for households and similar electrical appliances, particularly for commercial refrigerating appliances)

To ensure maximum safety, all plug-in cabinets with flammable refrigerant are additionally CE certified by an independent body.

Factory certifications

All Carrier cabinet factories have a certified quality management and environmental management systems

- EN ISO 9001 (General quality management system)
- EN ISO 14001 (Environmental management systems)

Complete & Sustainable Refrigeration Solutions for Food Retailers

Project Planning

- Display cabinets to maximize merchandising opportunities
- Energy and environmental impact consulting and analysis
- Optimal refrigeration technology solutions for each store type
- Complete project design and documentation



Product Development & Manufacturing

- Next-generation display cabinets to help increase sales
- Advanced refrigeration technology and integrated systems
- Energy-efficient solutions for the system lifecycle
- Sustainable natural refrigerant technologies



Lifecycle Care

- Preventative maintenance program
- 24/7 call center and service assistance
- Remote monitoring to ensure optimized performance
- System modernization for improved efficiency



Installation

- Approach tailored to unique customer requirements
- Experienced teams with standard work processes
- A focus on quality throughout the process
- Limited on-site time for minimal business disruption



Carrier Commercial Refrigeration is a leading supplier of high-efficiency turnkey refrigeration systems and services in the food retail industry.

www.carrier-refrigeration.com | www.carrier.com

