



# TempTale® GEO

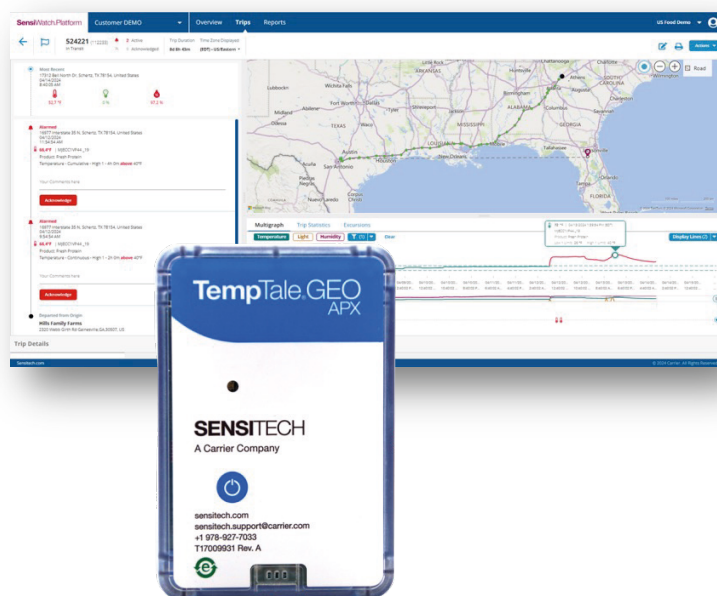
APX and APX Extended

## Moving freshness forward with real-time visibility

TempTale® GEO APX and APX Extended offer the latest solutions for real-time visibility and temperature monitoring of your perishable shipments. Paired with the SensiWatch® Platform, this real-time solution delivers critical insights into product conditions and location while shipments are in transit. Real-time alerts enable proactive intervention to reduce rejections and better manage supply chain disruptions. Backed by Sensitech's comprehensive training and support, switching is easy—gain real-time visibility starting with your very first shipment.

### Benefits of Moving To TempTale GEOs:

- Gain full visibility into the location and condition of all inbound shipments at all times.
- Automate shipment creation and corrections through the SensiWatch® Platform—reducing human error and driving compliance.
- Receive alerts on departures and arrivals to improve supply chain planning and manage potential disruptions.
- Leverage Sensitech's 30+ years of experience delivering high-end cold chain solutions, backed by industry-leading professional services for measurable success.
- Use advanced analytics to uncover insights and drive continuous improvement across your cold chain.

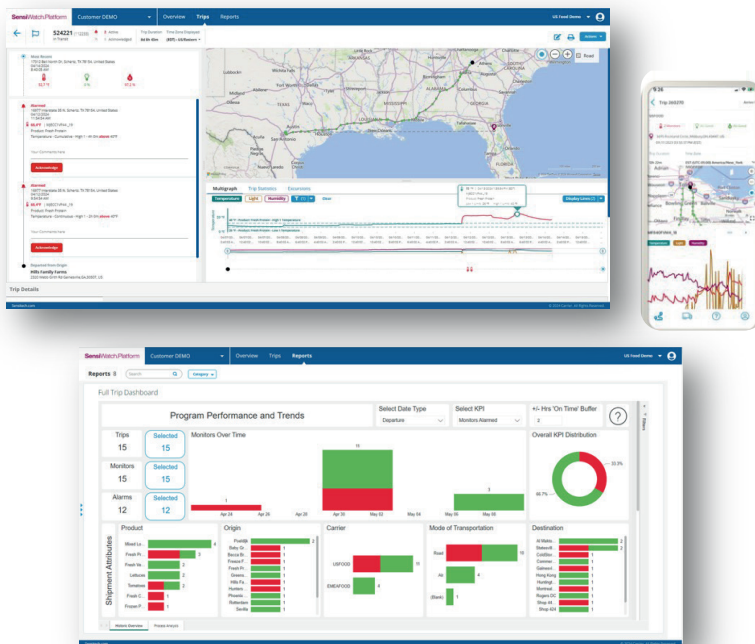


Drive compliance  
through automation  
and reduce human  
errors

Reduce rejections  
through proactive  
real-time cold chain  
management

Gain continuous  
supply chain  
improvements  
through advanced  
analytics

Collaborate more  
closely with your  
cold chain partners  
to delivery quality  
and safety



- The SensiWatch® Platform provides enterprise-wide access to enable collaboration and information sharing across the entire cold chain.
- Alerts are displayed on a shipment timeline, allowing for acknowledgment and documentation of corrective actions.
- The map view offers a comprehensive overview of all shipments and enables drilling into individual shipments that may require attention.
- Stay connected wherever you are with the mobile application.
- Advanced analytics deliver insights that support informed business decisions and drive cold chain improvements.

TempTale GEO APX		TempTale GEO APX Extended
Temperature	<p>Temperature Range: -10°C to 55°C (14°F to 131°F)</p> <p>Temperature Accuracy: NIST® Traceable ± 0.5°C for -10°C to 45°C (14°F to 113°F) ± 1.0°C for 45°C to 55°C (113°F to 131°F)</p>	<p>Temperature Range: -30°C to 55°C (-22°F to 131°F)</p> <p>Temperature Accuracy: NIST® Traceable ± 1.0°C for -30°C to -10°C (-22°F to 14°F) ± 0.5°C for -10°C to 45°C (14°F to 113°F) ± 1.0°C for 45°C to 55°C (113°F to 131°F)</p>
Location	Cellular (LTE Cat-M1 for 4G/5G networks)	
Light Range	0-400 lux, measure 0-100%	
Operating Life	Up to 30 days, reporting intervals based on duration.	
Environmental Rating	IP64	

*Sensitech has performed all necessary testing and can provide documentation supporting our compliance at your request.*

Sensitech Inc. is a global leader in delivering supply chain visibility solutions. Our innovative monitoring products and services help to maintain the quality and integrity of our customers' valuable products at every step in their journey, all around the world. For 30 years, leading companies in the food, pharmaceutical, industrial, consumer goods and other industries have relied on Sensitech to help protect their products—and their bottom lines. All trademarks and service marks are property of their respective owners. Visit [www.sensitech.com](http://www.sensitech.com) for additional information. ©2025 Carrier. All Rights Reserved.

Sensitech Inc. • Global Headquarters • 800 Cummings Center • Suite 258X • Beverly, MA 01915-6197  
1-800-843-8367 • +1-978-927-7033 • Fax: +1-978-921-2112 • [sensitech.clientservices@carrier.com](mailto:sensitech.clientservices@carrier.com)