



UNITED
TECHNOLOGIES
CARRIER
TRANSICOLD

Carrier Transicold Division
Carrier Corporation
P.O. Box 4805
Syracuse, New York 13221

THIS DOCUMENT IS THE PROPERTY OF CARRIER CORPORATION
AND IS DELIVERED UPON THE EXPRESS CONDITION THAT THE
CONTENTS WILL NOT BE DISCLOSED OR USED WITHOUT CARRIER
CORPORATION'S WRITTEN CONSENT.

SUBMISSION OF THESE DRAWINGS OR DOCUMENTS
DOES NOT CONSTITUTE PART PERFORMANCE OR
ACCEPTANCE OF CONTRACT

CROSS REFERENCE INDEX

DESCRIPTION	INSTALLATION DRAWING NO.	KIT NO.
FUEL TANKS (22" DIAMETER)	98-02201	-
INTEGRAL FUEL TANK	98-02240	-

PART NO.	MODEL DESCRIPTION
98-02239-01	NDH - REMOTE TANK
98-02239-02	NDH - INTEGRAL TANK

NOTES:

- 1.0 THE TRAILER STRUCTURE MUST BE EVALUATED BY THE TRAILER MANUFACTURER TO DETERMINE ITS ABILITY TO WITHSTAND THE LOADS IMPOSED BY THE UNIT OVER ITS SERVICE LIFE. CARRIER TRANSICOLD DOES NOT CONVEY ANY ENDORSEMENT OR WARRANTY FOR THE TRAILER'S STRUCTURAL INTEGRITY.

WEIGHTS:

SOLARA HEATING UNIT (WET, LESS BATTERY):	430 LBS [195 KGS]
BATTERY (AVERAGE):	56 LBS [25 KGS]
FUEL TANK AND MOUNTING HARDWARE-W/O FUEL:	170 LBS [70 KGS]
W/ FUEL:	595 LBS [270 KGS]

- 2.0 UNIT MOUNTING SURFACES OF THE TRAILER THAT CONTACT THE UNIT MOUNTING PADS MUST BE UNI-PLANAR TO WITHIN 0.13(3) TO PREVENT DISTORTION OF THE UNIT AND/OR TRAILER.
- 3.0 TRAILER SURFACES THAT CONTACT THE UNIT MOUNTING GASKET SHOULD NOT PROTRUDE MORE THAN 0.19(5) ABOVE THE PLANE DEFINED BY THE MOUNTING PAD SURFACES TO ENSURE PROPER AIR SEAL.
- 4.0 ALL DIMENSIONS SHOWN ARE IN INCHES WITH THE METRIC EQUIVALENT SHOWN IN PARENTHESES; i.e.: 1.00[25.4] OR $\frac{1.00}{[25.4]}$

FOR BEST RESULTS

- (A) DO NOT LOAD CARGO AGAINST THE INTERNAL BULKHEAD(S).
- (B) USE AIR RETURN BULKHEAD WITH VERTICAL RIBBING TO PROMOTE AIR CIRCULATION AROUND THE CARGO.
- (C) LOAD CARGO ON PALLETS OR CARTS, ESPECIALLY WHEN FLAT FLOORING IS USED.
- (D) FOR BEST AIR DISTRIBUTION AND PRODUCT PROTECTION, AN AIR CHUTE (DUCT) SHOULD BE USED.

CONTENTS	SHEET
GENERAL INFORMATION	1
SWING RADIUS	2
UNIT DIMENSIONAL DATA	2
TRAILER PREPARATION	3
UNIT LIFTING REQUIREMENTS	4
UNIT INSTALLATION	4
BATTERY INSTALLATION	5

SHEET INDEX	REV SHEET	J	G	D	J	H
		1	2	3	4	5

J	UPDATED SHEET INDEX. SEE SHEET 4.	IPCA72N2010P02-40					GMC	10/10/02
H	REMOVED BILL OF MATERIALS; UPDATED SHEET INDEX; SEE SHEETS 4 AND 5.	PCA729015G					DLD	03/22/99
G	UPDATED SHEET INDEX. SEE SHEET 2 AND 4.	PCA728224G					GMC	5/04/98
SYM	REVISION RECORD	ENGRG.	DATE	APPLICATION ENGRG.	DATE	DRAWN BY	DATE	

SUPERSEDES

TITLE

INSTALLATION INSTRUCTIONS
SOLARA NDH

DRAWING NO.
98-02239
SHT. 1 OF

REV
J

SEE SEPARATE PARTS LIST



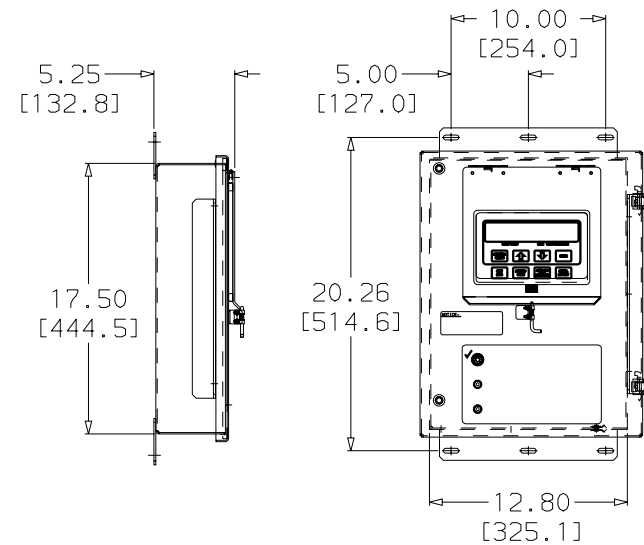
UNITED TECHNOLOGIES
CARRIER
TRANSCOLD

Carrier Transcold Division
Carrier Corporation
P.O. Box 4805
Syracuse, New York 13221

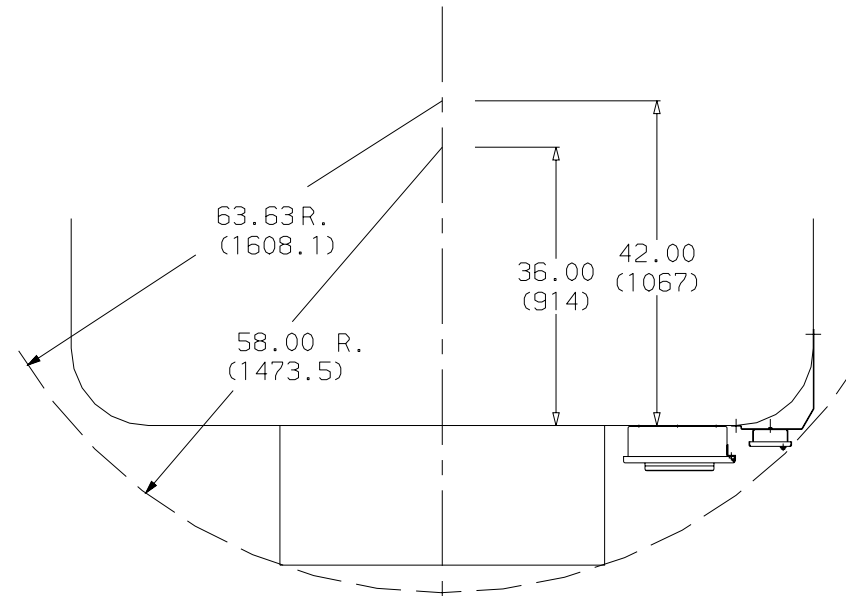
THIS DOCUMENT IS THE PROPERTY OF CARRIER CORPORATION AND IS DELIVERED UPON THE EXPRESS CONDITION THAT THE CONTENTS WILL NOT BE DISCLOSED OR USED WITHOUT CARRIER CORPORATION'S WRITTEN CONSENT.

SUBMISSION OF THESE DRAWINGS OR DOCUMENTS DOES NOT CONSTITUTE PART PERFORMANCE OR ACCEPTANCE OF CONTRACT

UNIT DIMENSION INFORMATION

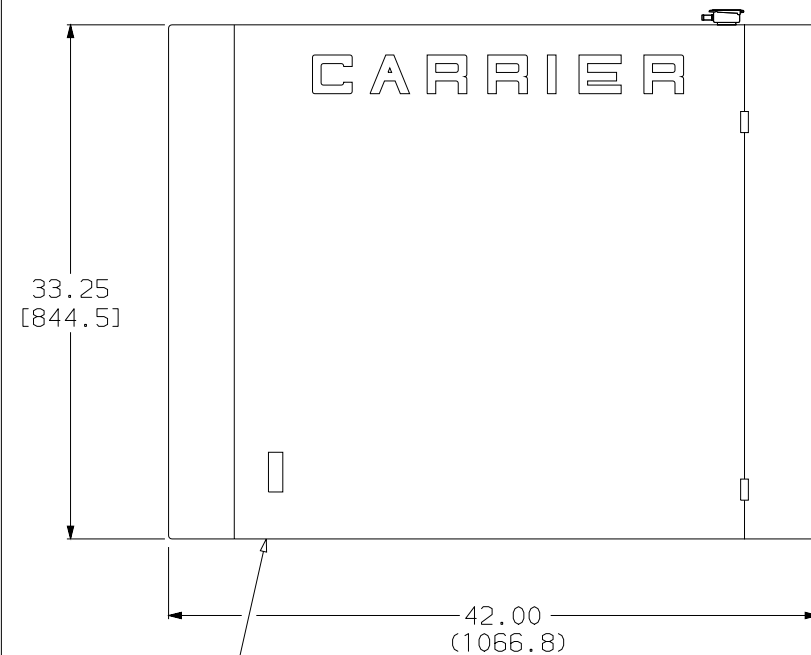


CONTROL BOX

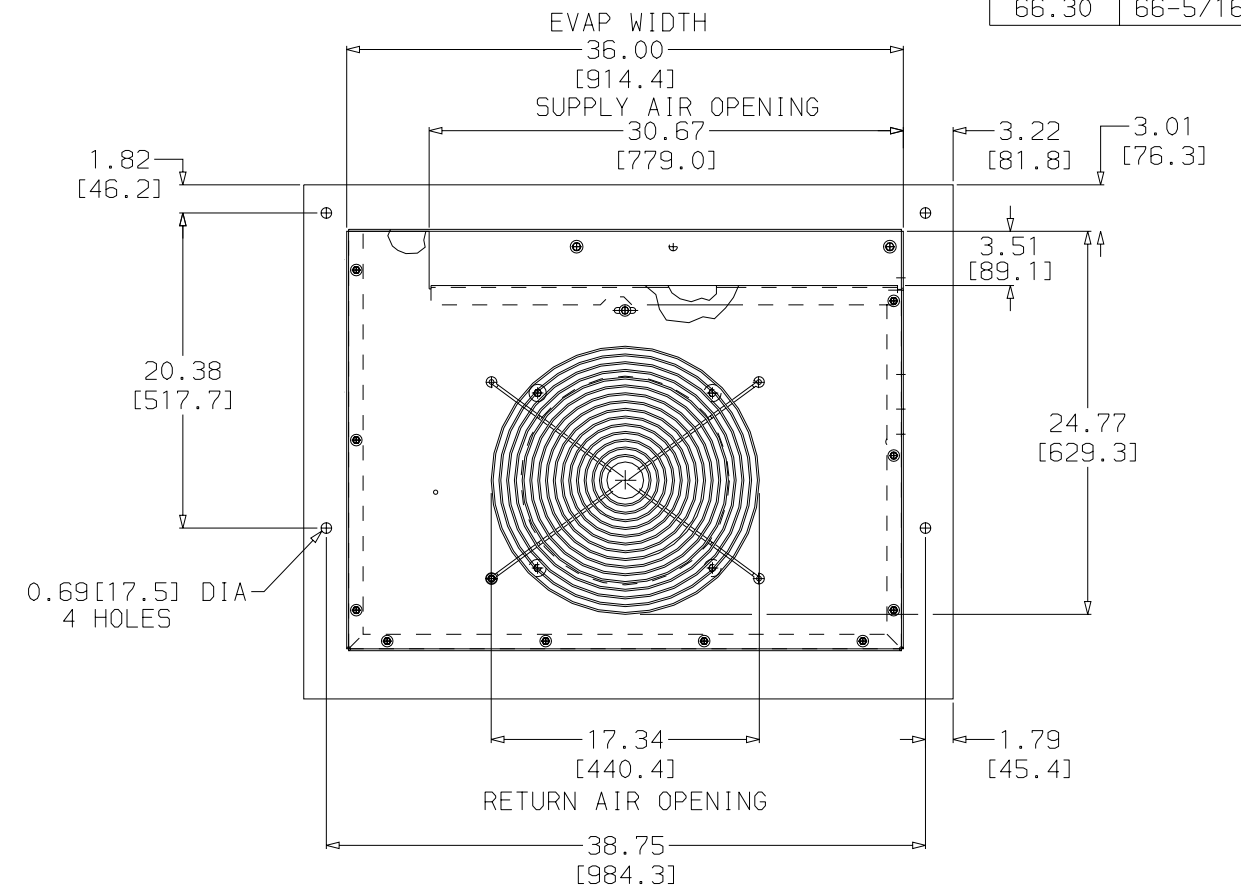
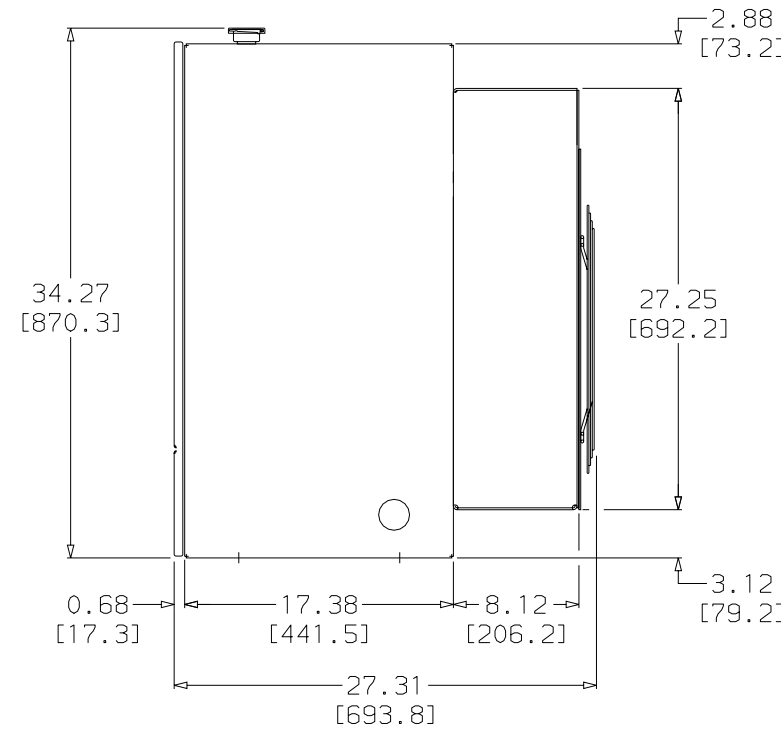


SWING RADIUS

CONVERSION CHART	
DECIMAL INCHES	FRACTIONAL INCHES
1.34	1-5/16
2.66	2-11/16
3.70	3-11/16
6.85	6-7/8
7.86	7-55/64
13.38	13-3/8
17.07	17-1/16
19.03	19-0
25.20	25-3/16
25.59	25-5/8
27.62	27-5/8
28.60	28-5/8
44.52	44-1/2
52.34	52-5/16
52.55	52-9/16
55.18	55-3/16
59.94	59-15/16
65.30	65-5/16
66.30	66-5/16



NOTE: SERIAL NUMBER AND WARRANTY INFORMATION LOCATED INSIDE FRONT DOOR



SYM	REVISION RECORD	ENGRG.	DATE	APPLICATION ENGRG.	DATE	DRAWN BY	DATE
D	PICT. UPDATED CONTROL BOX. (PCA72B2246)					GMC	5/04/98
-	INITIAL RELEASE PER 724018GN					JRC	7-13-94

SUPERSEDES	TITLE	DRAWING NO.	REV
	INSTALLATION INSTRUCTIONS SOLARA NDH	98-02239 SHT.2 OF	G



UNITED TECHNOLOGIES
CARRIER
TRANSICOLD

Carrier Transicold Division
Carrier Corporation
P.O. Box 4805
Syracuse, New York 13221

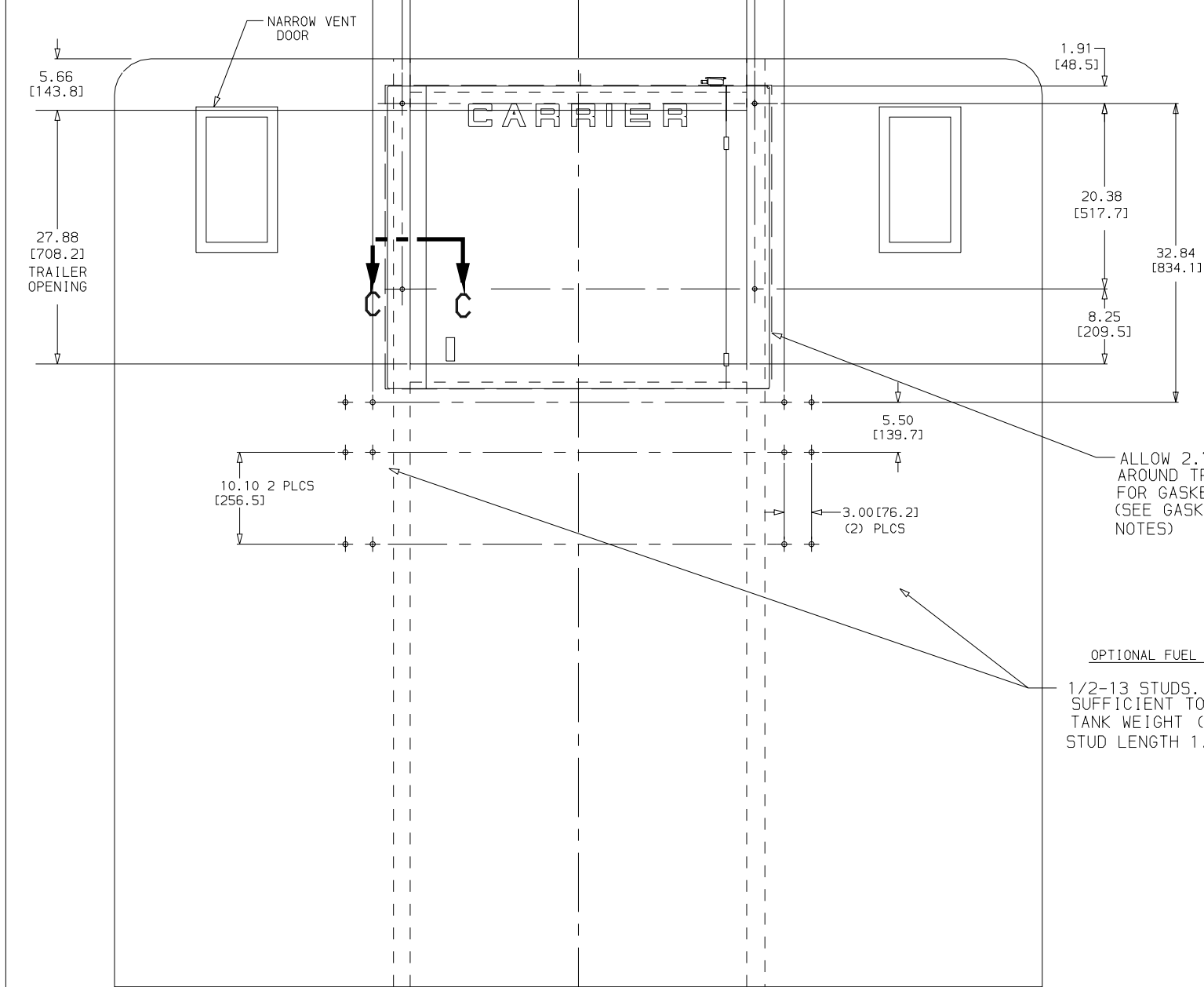
THIS DOCUMENT IS THE PROPERTY OF CARRIER CORPORATION AND IS DELIVERED UPON THE EXPRESS CONDITION THAT THE CONTENTS WILL NOT BE DISCLOSED OR USED WITHOUT CARRIER CORPORATION'S WRITTEN CONSENT.

SUBMISSION OF THESE DRAWINGS OR DOCUMENTS DOES NOT CONSTITUTE PART PERFORMANCE OR ACCEPTANCE OF CONTRACT

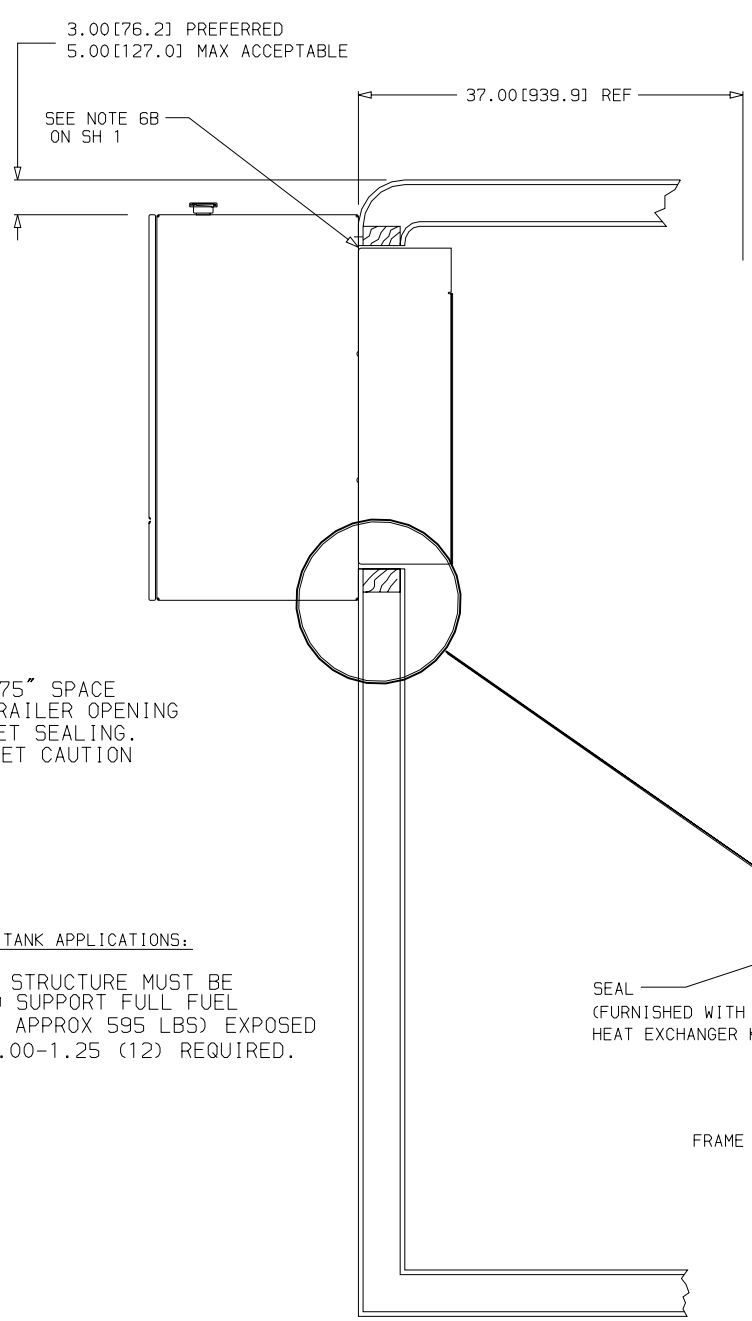
DECIMAL INCHES	FRACTIONAL INCHES
1.50	1-1/2
1.91	1-29/32
5.66	5-21/32
8.25	8-1/4
18.50	18-1/2
19.38	19-3/8
20.38	20-3/8
27.88	27-7/8
38.75	38-3/4
47.38	47-3/8

CAUTION: UNIT MOUNTING SURFACES OF TRAILER THAT CONTACT THE UNIT MOUNTING PADS MUST BE UNI-PLANAR TO WITHIN 0.13[3] TO PREVENT DISTORTION OF UNIT AND/OR TRAILER.

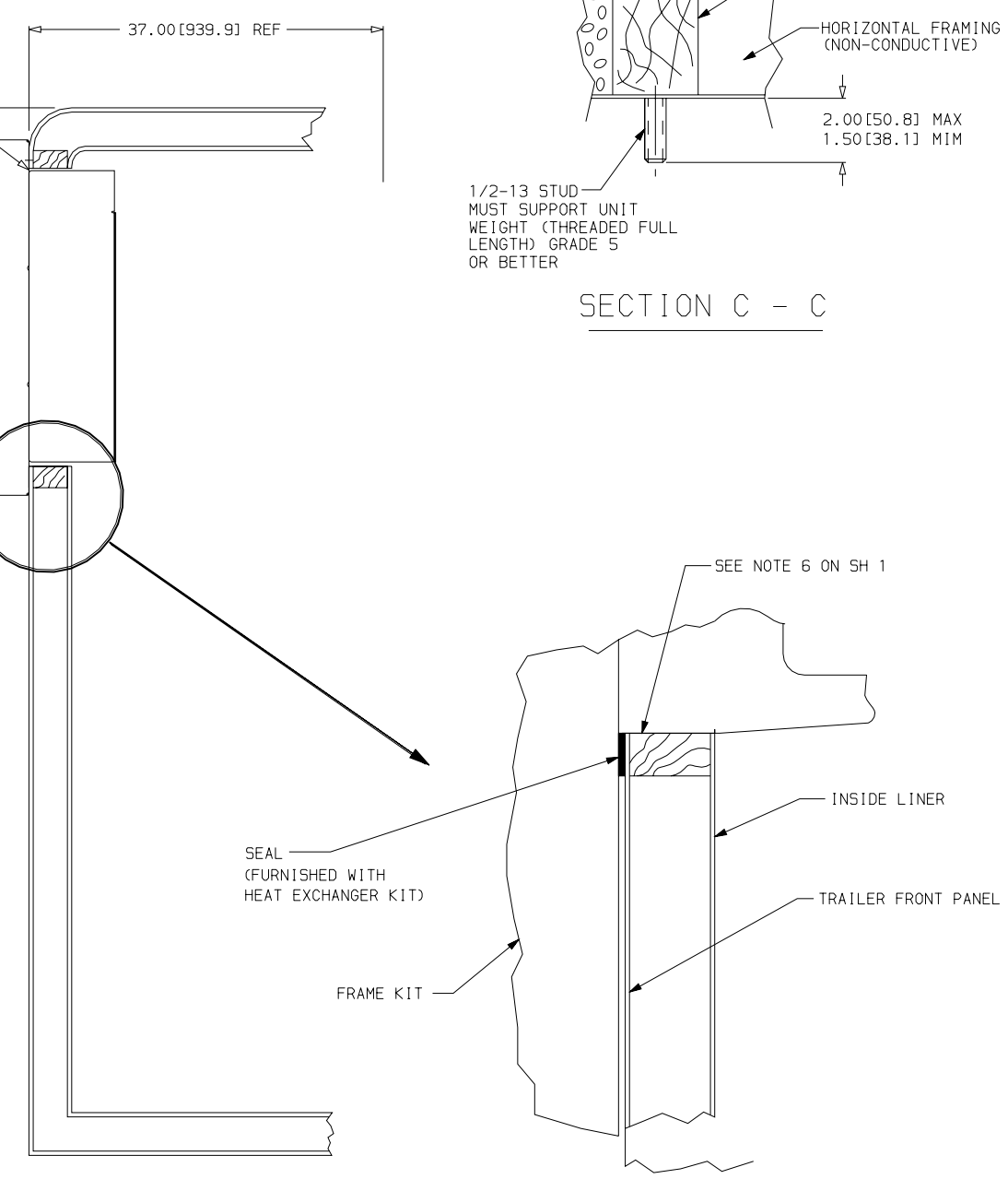
CAUTION: TRAILER SURFACES THAT CONTACT THE UNIT MOUNTING GASKET SHOULD NOT PROTRUDE MORE THAN 0.19[5] ABOVE THE PLANE DEFINED BY THE MOUNTING PAD SURFACES TO ENSURE PROPER AIR SEAL.



TRAILER FRONT VIEW



TRAILER PREPARATION



TRAILER SIDE VIEW

ENLARGED VIEW
SCALE: NONE

OPTIONAL FUEL TANK APPLICATIONS:
1/2-13 STUDS. STRUCTURE MUST BE SUFFICIENT TO SUPPORT FULL FUEL TANK WEIGHT (APPROX 595 LBS) EXPOSED STUD LENGTH 1.00-1.25 (12) REQUIRED.

G	PICT. UPDATED CARRIER DECAL.	(PCA7282246)				GMC	5/04/98
D	ADDED DIM 10.10 AND (4) STUDS.	PER IPCA727240G				MED	9/24/97
-	INITIAL RELEASE PER 724018GN					JRC	7/12/94
SYM	REVISION RECORD		ENGRG.	DATE	APPLICATION ENGRG.	DATE	DRAWN BY DATE

SUPERSEDES	TITLE	INSTALLATION INSTRUCTIONS SOLARA NDH	DRAWING NO. 98-02239 SHT 3 OF	REV G
------------	-------	---	-------------------------------------	----------



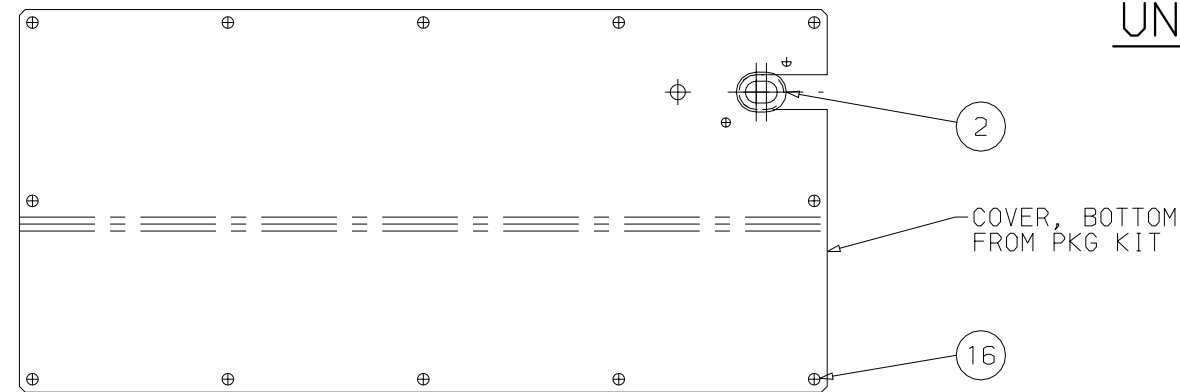
UNITED TECHNOLOGIES
CARRIER
TRANSCOLD

Carrier Transcold Division
Carrier Corporation
P.O. Box 4805
Syracuse, New York 13221

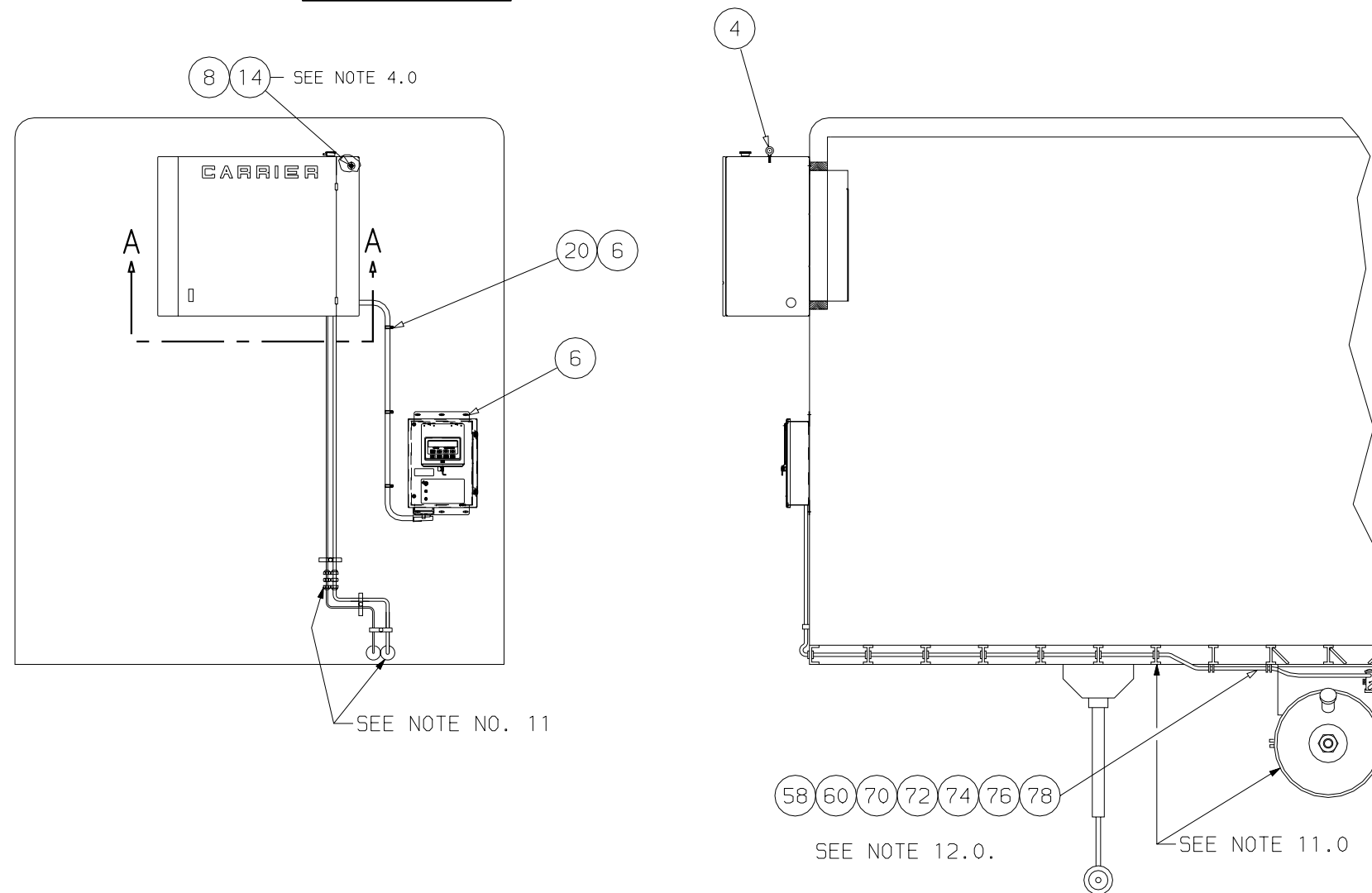
THIS DOCUMENT IS THE PROPERTY OF CARRIER CORPORATION AND IS DELIVERED UPON THE EXPRESS CONDITION THAT THE CONTENTS WILL NOT BE DISCLOSED OR USED WITHOUT CARRIER CORPORATION'S WRITTEN CONSENT.

SUBMISSION OF THESE DRAWINGS OR DOCUMENTS DOES NOT CONSTITUTE PART PERFORMANCE OR ACCEPTANCE OF CONTRACT

UNIT INSTALLATION



SECTION A-A



PREPARE UNIT FOR INSTALLATION:

- 1.0 PREPARE THE BODY TO RECEIVE THE UNIT. DIMENSIONS FOR EVAPORATOR OPENING AND MOUNTING STUD LOCATIONS ARE ON SHEET 3 OF THIS DRAWING.
- 2.0 INSTALL BATTERY ACCORDING TO INSTRUCTIONS ON SHEET 5. IF UNIT HAS BEEN SUPPLIED WITH BATTERY, CONNECT BATTERY CABLES ACCORDING TO THE INSTRUCTIONS ON SHEET 5.
- 3.0 PREPARE THE UNIT FOR LIFTING:
LOCATE THE 2 EYEBOLTS (ITEM 4) AND INSTALL IN TOP OF UNIT.

UNIT INSTALLATION:

- 4.0 RAISE THE UNIT AND INSTALL IN THE BODY OPENING. ENSURE THAT ALL FOUR STUDS ARE FULLY ENGAGED IN THE UNIT FRAME. PLACE WASHER (ITEM 14) AND LOCK-NUT (ITEM 8) ON EACH OF THE 4 STUDS. SNUG THE NUTS, THEN EVENLY TIGHTEN ALL FOUR TO 60 FT-LB/18.6 NM USING A TORQUE WRENCH. REMOVE LIFTING APPARATUS.
- 5.0 INSTALL BOTTOM COVER USING ITEM 16.
- 6.0 ROUTE FUEL AND COOLANT OVERFLOW LINES THRU BOTTOM OPENING OF UNIT.
- 7.0 INSTRUCTIONS FOR FUEL LINE CONNECTION ARE SUPPLIED WITH THE FUEL TANK KIT.

AFTER INSTALLATION:

- 8.0 PERFORM PRE-DELIVERY INSPECTION. COPIES OF COMPLETED CHECKLIST SHOULD BE SUPPLIED TO SELLING DEALER AND CUSTOMER.
- 9.0 OPERATE UNIT FOR A MINIMUM OF 8 HOURS THEN PERFORM FINAL INSPECTION ON UNIT.
- 10.0 IMPORTANT: PRIOR TO FINAL DELIVERY TO CUSTOMER, WARRANTY REGISTRATION MUST BE COMPLETED. ONE COPY SHOULD BE PROVIDED TO THE CUSTOMER, ONE COPY TO THE SELLER, AND THE FINAL COPY MUST BE SENT TO CARRIER TRANSCOLD. IN-SERVICE DATE MUST BE STAMPED ON THE UNIT IN THE PROPER LOCATION (SERIAL NUMBER PLATE) TO ACTIVATE WARRANTY COVERAGE.
- 11.0 INSTRUCTIONS FOR FUEL LINE CONNECTIONS ARE SUPPLIED WITH THE FUEL TANK KIT.
- 12.0 ITEMS 58,72,76,78 ARE FOR CONNECTING THE SUPPLY LINE.
ITEMS 60,70 ARE FOR CONNECTING THE RETURN LINE.
ITEM 56 QTY. 2 ARE USED ON INLET AND OUTLET OF THE FUEL PUMP.

J	ADDED NOTE ON ITEM 56 TO NOTE 12.0. IPCA72N201GP02-40					GMC	10/10/02
H	CHANGED ITEM CALLOUTS AND UPDATED NOTES. PCA729015G					DLD	03/04/99
G	PICT. UPDATED CONTROL BOX. (PCA728224G)					GMC	5/04/98
SYM	REVISION RECORD	ENGRG.	DATE	APPLICATION ENGRG.	DATE	DRAWN BY	DATE

SUPERSEDES	TITLE	INSTALLATION INSTRUCTIONS SOLARA NDH	DRAWING NO. 98-02239 SHT. 4 OF	REV J
------------	-------	---	--------------------------------------	----------



UNITED
TECHNOLOGIES
CARRIER
TRANSCOLD

Carrier Transcold Division
Carrier Corporation
P.O. Box 4805
Syracuse, New York 13221

THIS DOCUMENT IS THE PROPERTY OF CARRIER CORPORATION
AND IS DELIVERED UPON THE EXPRESS CONDITION THAT THE
CONTENTS WILL NOT BE DISCLOSED OR USED WITHOUT CARRIER
CORPORATION'S WRITTEN CONSENT.

SUBMISSION OF THESE DRAWINGS OR DOCUMENTS
DOES NOT CONSTITUTE PART PERFORMANCE OR
ACCEPTANCE OF CONTRACT

BATTERY INSTALLATION

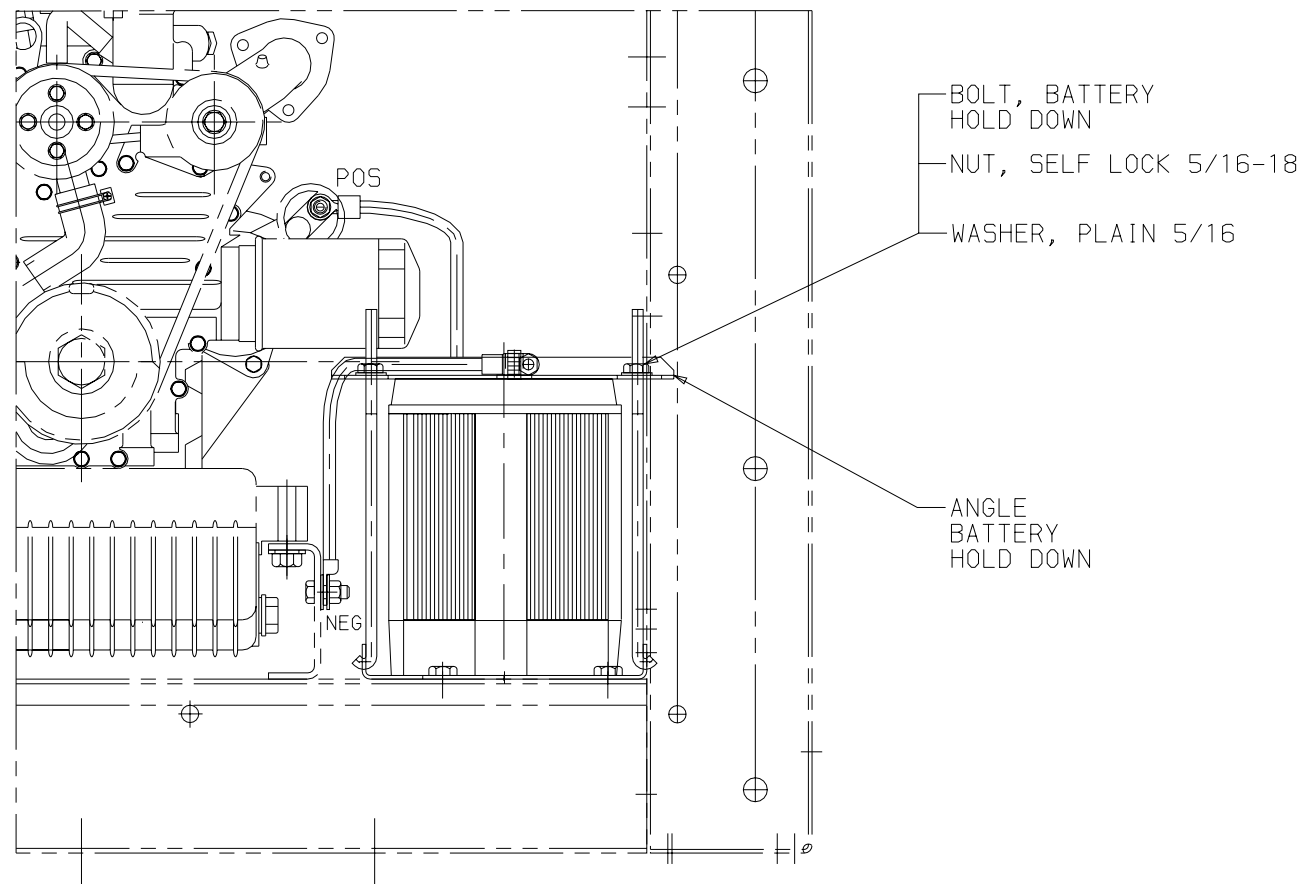
UNITS SUPPLIED WITHOUT BATTERY

PARTS REQUIRED FOR INSTALLATION OF BATTERY ARE LOCATED IN A POLY BAG
AND/OR ATTACHED TO THE BATTERY TRAY.

- 1.0 CUT WIRE TIE HOLDING THESE PARTS IN THE BATTERY TRAY AND REMOVE PARTS. PLACE BATTERY IN TRAY WITH NEGATIVE (-) TERMINAL TO THE REAR OF THE UNIT (AS SHOWN). CONNECT BATTERY CABLES (THE USE OF A CORROSION INHIBITOR ON THE TERMINALS IS RECOMMENDED); RED CABLE TO POSITIVE (+) TERMINAL, BLACK CABLE TO THE NEGATIVE (-) TERMINAL. CABLES SHOULD BE ROUTED TOWARD THE COMPRESSOR (AS SHOWN). TIGHTEN TERMINAL CONNECTORS SECURELY.
- 2.0 INSTALL BOLT HOLD DOWN, PLAIN WASHER AND LOCK NUT AS SHOWN. SECURELY TIGHTEN NUTS TO PREVENT MOVEMENT OF BATTERY.

UNITS SUPPLIED WITH BATTERY INSTALLED

- 1.0 CUT WIRE TIE(S) THAT HOLD CABLES TO UNIT FRAME.
- 2.0 CONNECT RED BATTERY CABLE TO THE POSITIVE (+) BATTERY TERMINAL; CONNECT BLACK CABLE TO NEGATIVE (-) BATTERY TERMINAL (USE OF CORROSION INHIBITOR IS RECOMMENDED).



H	CHGD FROM ITEM NO'S TO COMPONENT DESCRIPTIONS. PCA729015G					DLD	03/04/99
-	INITIAL RELEASE PER 724018GN					JRC	7-14-94
SYM	REVISION RECORD	ENGRG.	DATE	APPLICATION ENGRG.	DATE	DRAWN BY	DATE

SUPERSEDES

TITLE

INSTALLATION INSTRUCTIONS
SOLARA NDH

DRAWING NO.
98-02239
SHT. 5 OF

REV
H