



VECTOR® S15

EFFICIENCY YOU CAN COUNT ON



The Vector® S 15

Key benefits

The **Vector S 15** trailer unit is a smart solution that sets the new standard for total cost of ownership. The combination of reliability, performance, efficiency and affordability makes the **Vector S 15** an ideal choice for those seeking a smart cooling solution.



-20%

Lower fuel consumption*



Up to

3,000 hrs

**oil maintenance
interval**

>15 kW

**High cooling
capacity**



FAST

**Temperature
pulldown**



62 dB(A)

**Reduced noise
level at very
low speed**



707 kg

**One of the
lightest weights
in the segment**

* Compared to Vector 1550

The Vector[®] S 15 Specifications

The **Vector S 15** is a semi-electric unit providing high capacity in diesel mode while being efficient and quiet.



Cooling Capacity

- On engine
0°C/30°C: 15,080 W
-20°C/30°C: 8,150 W



Technology

- Semi-electric
- Multi-speed engine



Heating Capacity

- Up to 10 kw*



Max Airflow

- 5,200 m³/hr



Weight

- 707 kg



Sound Pressure

- 62 dB(A) in very low speed mode

* with winter package version

Improved cost of ownership

The **Vector S 15** is designed to reduce total cost of ownership. With its optimized fuel efficiency and enhanced logic feature, the system helps save on fuel costs while maintaining peak performance and high uptime. The **Vector S 15** is also engineered to ease maintenance accessibility and reduce associated costs. Its improved and efficient design ensures reliable and maximum uptime.



Optimized fuel efficiency

The **Vector S 15** consumes less fuel* while delivering superior performance*, reducing overall costs and maximizing uptime. The efficient design and optimized logic features ensure that it uses only the necessary amount of diesel, minimizing fuel consumption and wastage, while reducing CO₂ emissions.

*Compared to legacy Vector 1550

Compelling purchase price

The **Vector S 15** trailer refrigeration unit is a high-quality product that is designed to meet the needs of businesses. You can enjoy the benefits of a top-of-the-line trailer refrigeration unit at a compelling purchase price. The **Vector S 15** is built to last, with durable materials and advanced technology that ensures a long lifespan and easy maintenance. Whether you are a small business owner or a large fleet manager, the **Vector S 15** represents an unparalleled combination of quality and affordability in the current market.

FROM INNER CITY TO LONG HAUL

The **Vector S 15** is suitable for many applications, whether you are operating in cities or on long hauls. This unit will allow you to comply with standard emission regulations and is also ideal for long distance deliveries. It is a simple, powerful and operationally cost-sensitive solution.



Reliability, performance and efficiency

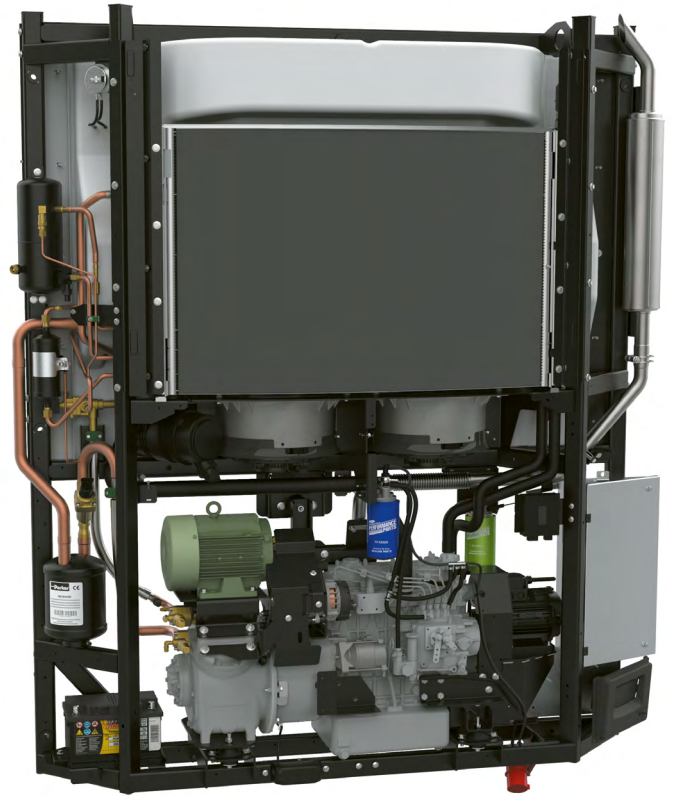
The **Vector S 15** is designed to deliver high performance in a variety of conditions, even in hot or humid environments, making it your everyday partner. The unit's efficient design and optimized logic help maintain consistent temperature levels, minimizing energy consumption and maximizing efficiency.

Easy maintenance

The **Vector S 15**'s semi-electric architecture is engineered with reliable and accessible service parts that reduces the risk of failure. The system's easy access for servicing simplifies maintenance and reduces downtime. Oil maintenance intervals have been extended to up to 3,000 hrs. The unit's robust design and optimized logic features ensure reliable and efficient operation, minimizing repair costs and increasing uptime.

Lightweight trailer model

At approximately 700 kg, the **Vector S 15** is one of the lightest trailer model in its industry class. The lightweight design can help reduce operating costs by improving fuel consumption and increasing payload capacity. Additionally, its lightweight design allows for improved efficiency and performance, as it can cool down quickly and maintain a consistent temperature throughout the transportation process.



Quiet operation

The unit's quiet operational noise of just 62 dB(A) when operating at very low speed also makes it one of the quietest products in the Carrier Transicold Vector range. This ensures it is ideally suited for urban distribution centres and delivery routes, while also creating a more enjoyable working environment for drivers.

Services



The Lynx Fleet application **intelligently monitors connected refrigeration systems** from anywhere in the world. It provides vital information through a centralized data stream and **with improved visibility for asset owners, producers, drivers, fleet managers and retailers** on the products being transported and the delivery modes transporting them.

In addition to providing critical data, such as temperature, location and movement of refrigerated assets, Lynx Fleet can provide analytics and diagnostic information.

1

Advanced Remote Temperature Monitoring

End-to-end visibility enables product integrity throughout the transportation process.



2

Accurate and Reliable Temperature Control

Consistently managed temperature requirements reinforce customer trust and loyalty.



3

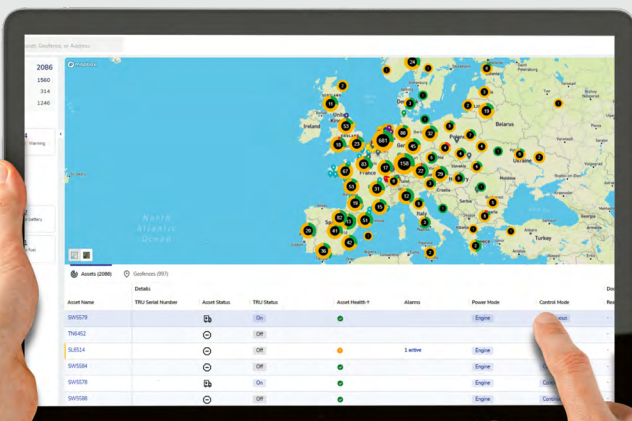
Proactive Maintenance for Optimized Uptime

Implementing preventive maintenance ensures uninterrupted operations for maximum uptime.



Lynx Fleet allows you to **define your own custom reports and alerts** to track the information you need for your operations. **Get extra insight and control over your refrigeration units with Lynx Fleet.**

Since 2022, all new Carrier Transicold trailer units come equipped with the Lynx Fleet digital application, and you can activate it anytime. **With remote activation**, you don't even need to take your vehicle to a service center.





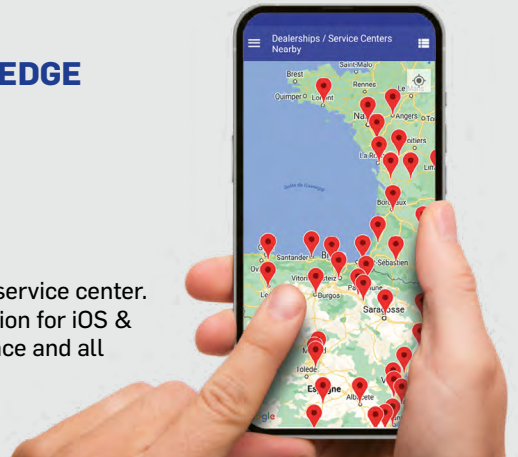
Combine your Carrier Transicold transport refrigeration unit with a BluEdge maintenance contract to leverage the full expertise of our extensive service network (600 locations across Europe) and get optimum levels of product support that will keep your fleet operating effectively.

IT'S NEVER BEEN EASIER TO GIVE YOUR FLEET AN EDGE

- Over 900 service centers around the globe
- 24/7 assistance just one call away
- Three service levels to cater for all needs: Core, Enhance, Elite

CARRIER TRANSICOLD SERVICE LOCATOR

Download our free app or check our dedicated website to find the nearest service center. In addition to full details of all Carrier partner service centers, our application for iOS & Android features technical information, tutorial videos for unit maintenance and all the information you need to optimise your uptime.



PEACE OF MIND FOR YOUR EQUIPEMENT

SIMPLE BUDGETING

Service costs are fixed for the duration of the term for a simple pre-determined fee.

REDUCED ADMINISTRATION

BluEdge takes care of arranging service and repairs for you.

BEST EFFICIENCY FOR YOUR PARTS

Benefit from genuine performance parts to ensure your equipment operates at its peak.

A TIER FOR EVERY BUSINESS



CORE

An economical solution for customers with a connected unit and need for standard support. Our Core option allows us to support your needs with a mix of online and side presence.



ENHANCE

Designed for customers who are looking for complete preventive maintenance with a high level of remote connectivity. We will maximise your equipment life, uptime and performance with customised support for each of your assets.



ELITE

Our Elite plan is the ultimate worry free, peace of mind program for clients who demand the highest level of equipment reliability, uptime and fiscal certainty. Repair or replacement of maintainable failed parts is included in this plan.

Vector S 15

Set the standard even higher

The Vector S 15 can be equipped with various options to enhance ease of use and comfort, and help further reduce CO₂ emissions.



Energy Accessories

- Solar panel 50 W/110 W



Data Recording/Monitoring

- Datacold 100/300/600 range
- Datacold Dongle USB



Noise Reduction & Aesthetics

- Bottom panel kit
- Low noise kit



THE RIGHT SOLUTION FOR YOUR NEEDS

The Vector S 15 positions itself as a reliable, quiet and efficient solution featuring semi-electrical technology with easy maintenance and usage, complementing the fully electrical Vector HE 17 and flagship Vector HE 19 units.



VECTOR S 15
Efficient & designed
for easy maintenance



VECTOR HE 17
Highly efficient
& versatile



VECTOR HE 19
Intensive
& multi-temp use



Follow us



Carrier Transicold Europe S.C.S.
3, rue Joseph Monier - Immeuble Cristalia
92500 Rueil-Malmaison - France
Phone: +33 (0)1 41 42 28 00
www.carriertransicold.eu