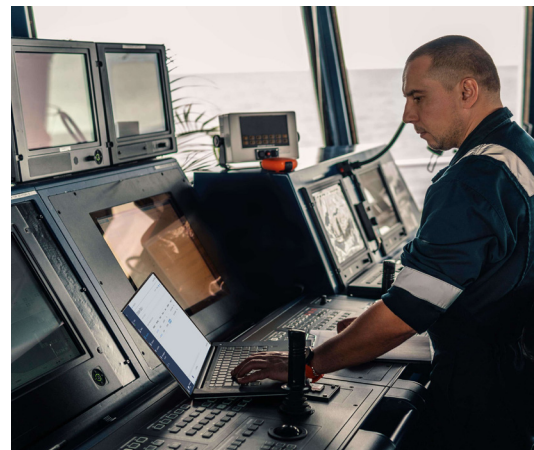




# INTRODUCING



## Explore Lynx™ Fleet

The Lynx Fleet application intelligently monitors connected refrigeration systems from anywhere in the world, providing vital information through a centralized data stream and with improved visibility for asset owners, producers, and fleet managers on the products being transported.

In addition to providing critical data, such as temperatures, location and movement of refrigerated assets, Lynx Fleet can provide analytics and diagnostic information.

The digital system provides access to near live service and maintenance schedules for each connected refrigeration unit, helping to aid fleet management procedures and ensure minimal disruption through asset downtime.

## Capabilities

Accessible via desktop, smartphone or tablet, Lynx Fleet offers operators 24/7 access to a wealth of valuable data on their refrigeration systems, including but not limited to:



Refrigeration unit health analytics



In-depth service and utilization reports



Advanced remote temperature monitoring



Operational management and control capability



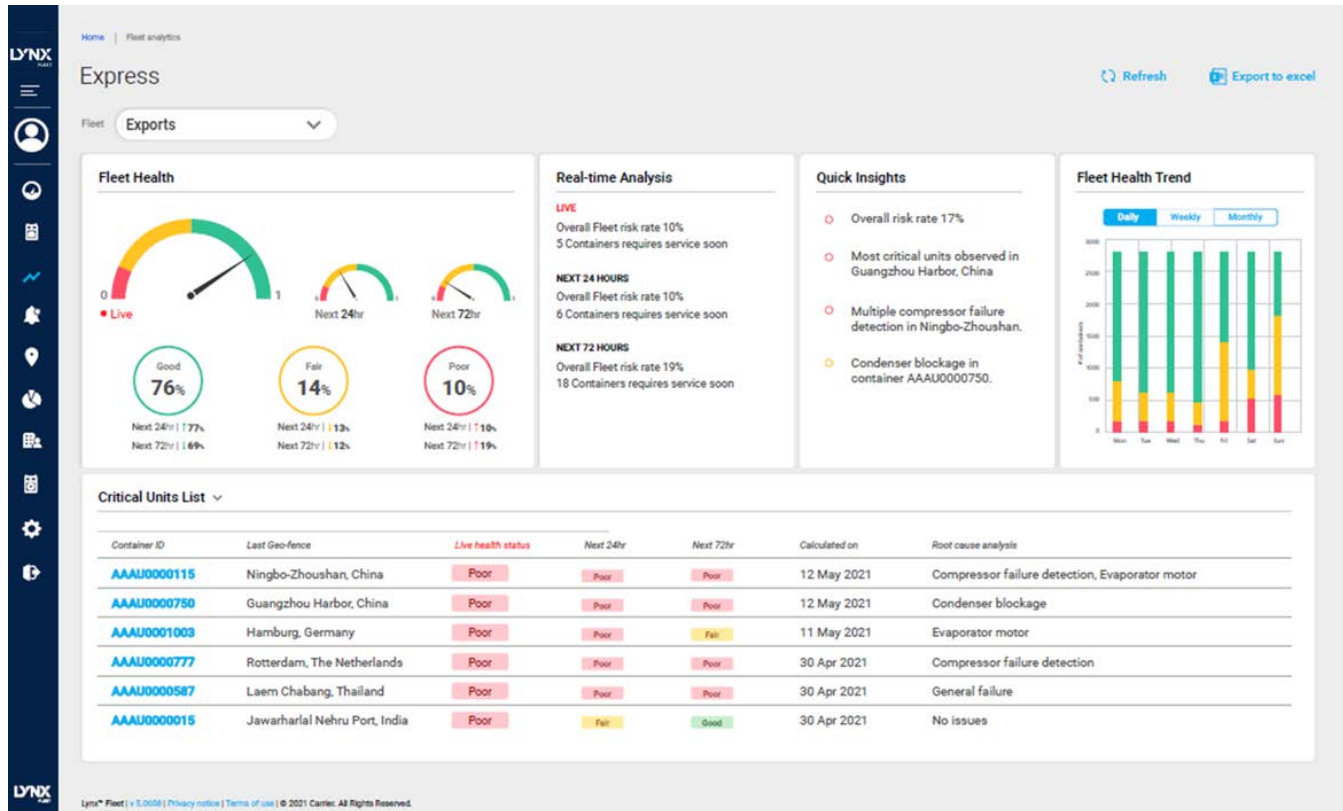
Geo-fencing



Preventative maintenance

# Lynx Fleet Refrigeration Unit Health Analytics

Carrier-exclusive Reefer Health Analytics allows fleet managers to view diagnostic information about their equipment, giving them added insights into the health of their reefers by reporting anomalies along with possible causes and recommended solutions, ultimately resulting in greater uptime and cost savings.



## Lynx Fleet Vessel Solution

Lynx Fleet Vessel Solution allows Lynx Fleet-enabled refrigerated containers to communicate through a vessel's wireless network, and to name a few of the key differentiators:

- Provides ship crew with improved oversight, including information about refrigeration unit's temperature, operational performance and precise location on vessel
- Reduces or eliminates need for manual inspections, thereby improving ship crew safety, especially in rough seas
- Frequent updates about cargo health and location, as Lynx Fleet transmits its findings back to a landside monitoring station, for vessels equipped with satellite communication capabilities

